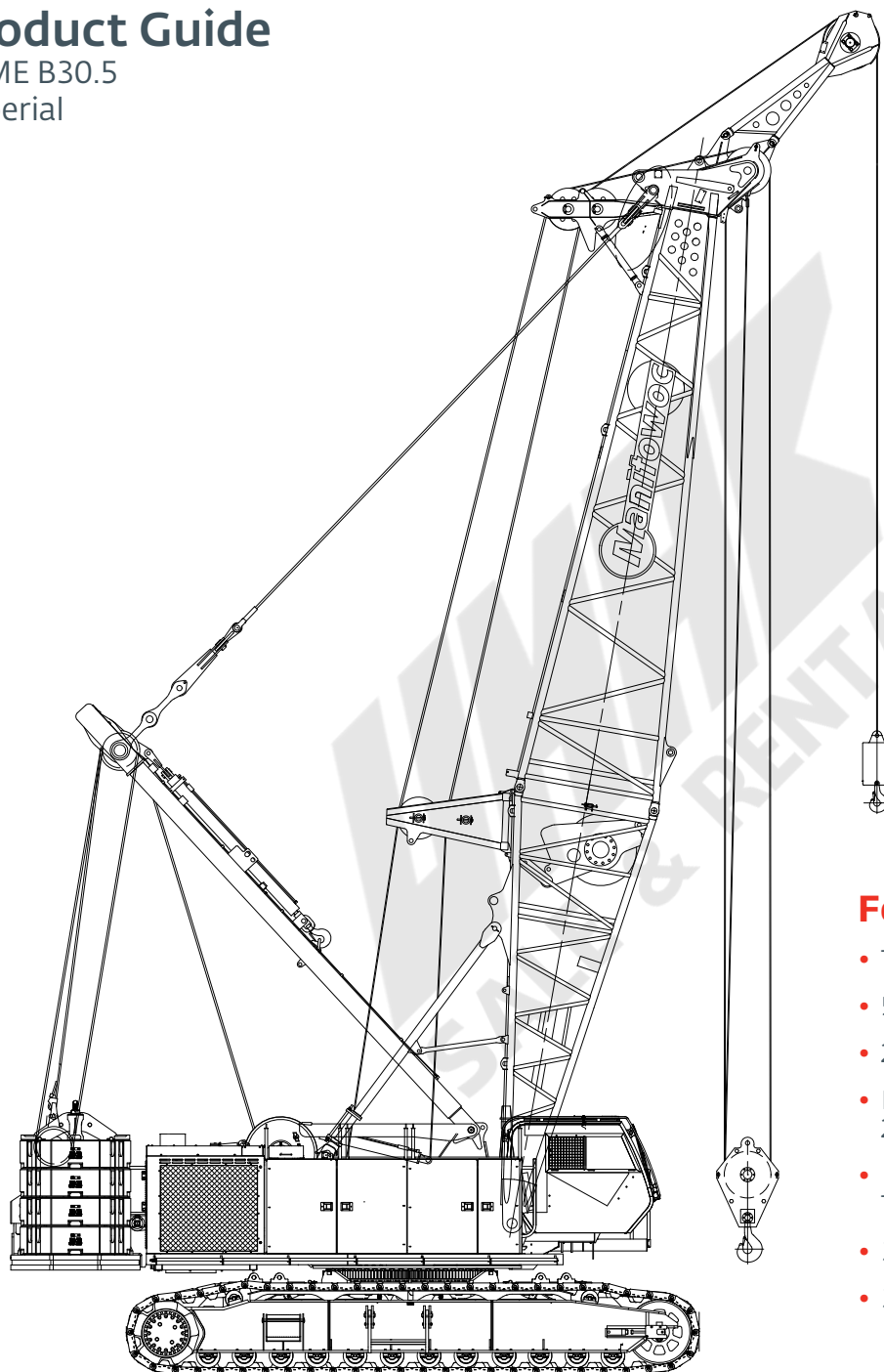


# Manitowoc MLC165

## Product Guide

ASME B30.5

Imperial



### Features

- 182 USt capacity
- 5510 ft-kips maximum load moment
- 275 ft main boom
- Max boom + fixed jib combination:  
226 ft + 80 ft
- Max boom + luffing jib combination:  
167 ft + 170 ft
- 320 hp Tier IVi engine
- 300 hp Tier III engine



# Contents

|                                 |    |
|---------------------------------|----|
| Specifications                  | 4  |
| Outline dimensions              | 7  |
| Transport data                  | 13 |
| Performance data                | 14 |
| Boom combinations               | 18 |
| Main boom range / load charts   | 21 |
| Fixed jib range / load charts   | 23 |
| Luffing jib range / load charts | 26 |
| Manitowoc Crane Care            | 30 |

# Specifications

## Upperworks



### Engine

Cummins Model QSL9-300 Tier III, 6 cylinder, 300 hp at 2100 governed RPM.

Cummins Model QSL9-320 Tier IVi, 6 cylinder, 320 hp at 2100 governed RPM.

Includes engine block heater (120 V), air heater starting aid (24 V), oil heater starting aid (120 V), high silencing muffler (Tier III) or diesel particulate filter (Tier IVi), radiator and fan.

24 volt starting and 70 amp alternator.

One 150 gallon capacity diesel fuel tank, mounted on right side of upperworks with sight and electrical level indicator.



### Controls

Hydraulic pilot controls provide infinite speed response directly proportional to control lever movement. Controls include Manitowoc's CANBUS operating system providing microprocessor driven control logic, pump control, on-board diagnostics and service information.

Block-up limit control is standard for hoist and whip lines.

RCL/RCI (Rated Capacity Limiter/Rated Capacity Indicator) system is standard for main boom and upper boom point. "Function cut-out" or "warning only" operation is available via programmable configuration.

Travel and swing alarms are standard.



### Hydraulic system

Three high-pressure pumps are driven by the engine. Two pumps provide hydraulic power enabling simultaneous multi-function capability. One pump provides independent "closed loop" hydraulic power for the swing system. An additional fourth pump is required for free fall.

Hydraulic reservoir capacity is 158 gallon and is equipped with breather, sight and electrical level indicator, clean out access, and internal diffuser.

Each function is equipped with relief valves to protect the hydraulic circuit from overload or shock.

Replaceable, ten micron (absolute) full flow tank filter is furnished in the hydraulic circuit. All oil is filtered prior to return to the hydraulic reservoir.

Hydraulic system also includes hydraulic oil cooler.



### Drums

Two equal width winches are driven by independent variable displacement axial piston hydraulic motors through planetary reduction. Drums are grooved for 26 mm rope.

Powered hoisting/lowering operation is standard with automatic (spring applied, hydraulically released) multi-disc brakes, and drum rotation indicators.

- Optional: free-fall operation for front and/or rear drums.
- Optional: auxiliary (third) hydraulic powered drum mounted in boom butt. Includes third drum control system. Auxiliary drum may be used as the luffing hoist when machine is equipped with a luffing jib.
- Optional: auxiliary drum preparation includes electric wiring, controls, hydraulic selector valve and plumbing.



### Boom hoist

Independent boom hoist consists of a single drum grooved for 22 mm diameter wire rope. Includes 22 mm diameter wire rope for 20 part line reeving.

Drum is powered by a fixed displacement hydraulic motor coupled to an internal brake and planetary gearbox equipped with ratchet and pawl.



### Mast

Moving mast is 23' 7" long and connects the boom hoist reeving to the steel boom suspension pendant rigging. When used with optional self-erect package, the mast is utilized for crane assembly and disassembly. The mast is capable of lifting and positioning the crawler assemblies, stacking the counterweights and assembling the boom and jib, utilizing the self assembly cylinder.

Rotating bed includes counterweight raising cylinders capable of lifting the entire upperworks counterweight for removal and installation. The upperworks counterweight is attached to rotating bed with power-actuated pins.

# Specifications



## Counterweight

Counterweight raising cylinders are mounted in the rotating bed with links mounted to top of the cylinder and connected to the counterweight tray. The upper counterweight is secured to the rotating bed with hydraulically actuated pins.

Upper counterweight consists of a one-piece tray and eight upper counterweight boxes. Series 2 carbody counterweight boxes are attached to carbody (each side) and weigh 8 t each.

Series 1  
Upper counterweight (6 pieces+tray)..... 99,430 lb

Series 2  
Upper counterweight (8 pieces+tray).....121,475 lb  
Carbody counterweight (2 pieces)..... 35,275 lb  
**Total counterweight..... 156,750 lb**



## Swing system

Independent single swing drive mounted in rotating bed is powered by a hydraulic piston type motor driving a spur gear through a planetary reduction. Internal brake and four position manual swing lock is provided.

Maximum swing speed: 2.5 rpm.



## Operator's cab

Fully enclosed and galvanealed steel insulated module is equipped with sliding door, large safety glass windows on all sides and roof. Signal horn, cab space heater, front and roof windshield wipers, air conditioning, dome light, sun visor and shade, fire extinguisher and air circulating fan are standard.

► Optional: tilt cab.

► Optional: nylon protective window covers.

## Lowerworks



## Carbody

High strength fabricated steel assembly utilizing Manitowoc's FACT™ connection system incorporating two hydraulically powered pins for fast installation and removal of crawlers.



## Crawlers

Crawler assemblies are 26' 3" long, high strength steel fabrications with 3' 7" wide cast steel crawler pads. Each crawler is powered independently by a variable displacement hydraulic motor driving a planetary reduction. Crawlers provide ample tractive effort that allows counter rotation with full rated load. Maximum ground speed of 1.1 mph.

## Attachments



### No. 74 boom

The liftcrane is equipped with a 49' 2" basic No. 74 tubular chord boom consisting of a 19' 8" butt and 29' 6" top with six 25.6" diameter roller bearing sheaves. No. 74 boom utilizes wire rope pendants.

Hydraulically powered boom hinge pin system consists of cylinder, piping, operating controls and locking device.

Spring cushioned boom stop and electronic automatic boom stop standard.

Luffing jib preparation included as standard.

► No. 74 boom length is increased using 9' 10", 19' 8", and 39' 4" boom inserts with wire rope suspension pendants. Max boom length is 275'.

► 15 USt swivel hook and weight ball standard.



### No. 134 fixed jib

► 30' basic No. 134 tubular chord fixed jib consisting of 15' jib butt and 15' jib top with 12' 6" jib strut, wire rope, pendants and backstay. Includes RCL/RCI hardware.

► No. 134 fixed jib length is increased using 10' and 20' inserts with wire rope pendants. Max fixed jib length is 80'.



### No. 135 luffing jib

► 70' basic No. 135 tubular chord luffing jib assembly consisting of 27' butt, 20' insert, and 23' top with two 27" straight roller bearing sheaves. Also included are RCL/RCI hardware, pin connected jib sections, pendants, fixed strut, jib strut, backstay pendants, boom point wheel and 26 mm luffing jib hoist line.

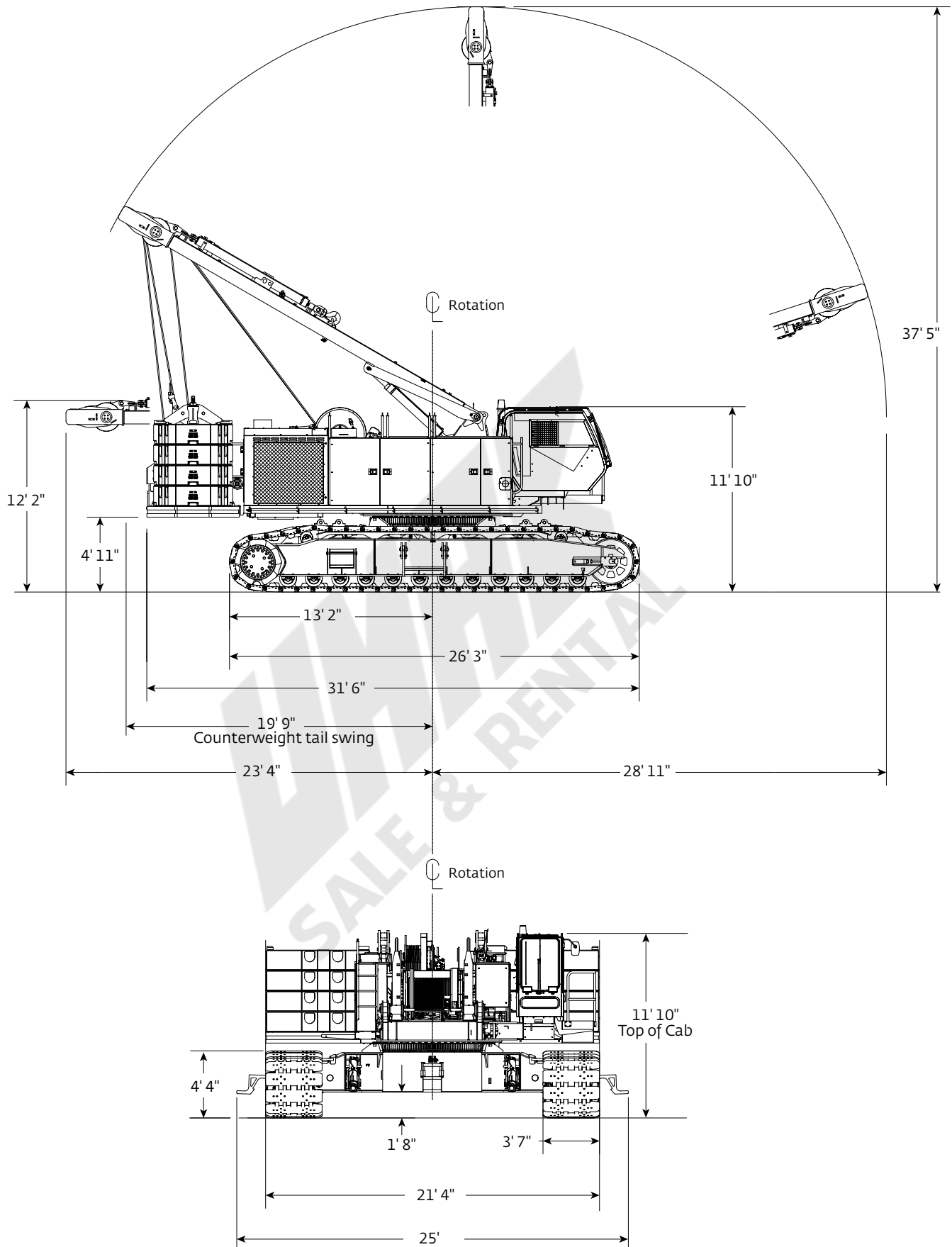
► No. 135 luffing jib is lengthened using 10', 20' and 40' inserts with wire rope pendants. Maximum luffing jib length is 170'.

# Specifications

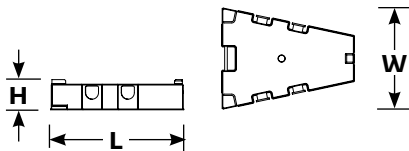
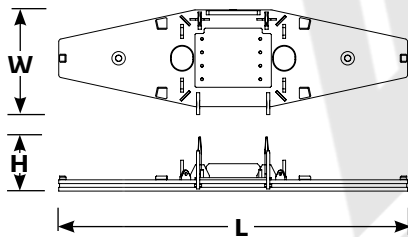
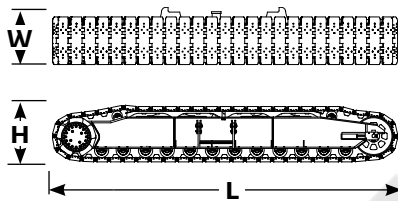
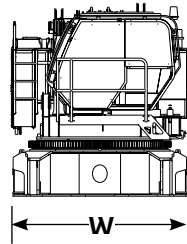
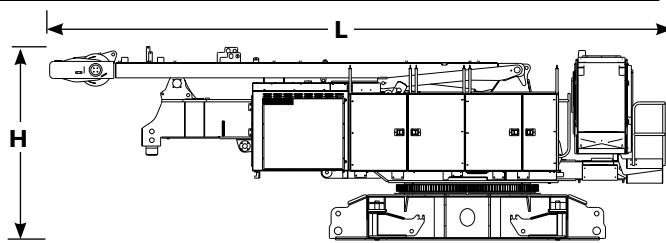
## Optional equipment

- Self-erect system includes: carbody jacking cylinders with pads, controls, self assembly cylinder, boom-butt installation support, counterweight cylinders and crawler handling chain.
- Detachable upper boom point with one 30" diameter tapered roller bearing sheave for No. 74 boom top (this is same upper boom point used on 555, 777, 999, 2250, 16000 and 18000).
- Blocks and hooks –
  - 30 USt hook block with one 30" sheave for 26 mm wire rope with swivel hook, hook latch and swivel lock.
  - 60 USt hook block with two 30" sheaves for 26 mm wire rope with swivel hook, hook latch and swivel lock.
  - 100 USt hook block with three 30" sheaves for 26 mm wire rope with swivel hook, hook latch, and swivel lock.
  - 165 USt hook block with five 30" sheaves for 26 mm wire rope with single barb swivel hook, hook latch, and swivel lock.
  - 165 USt hook block with five 30" sheaves for 26 mm wire rope with duplex swivel hook, hook latch, and swivel lock.
- Hydraulic Test Kit.
- Service Interval Kits.
- Special Paint Color (other than Manitowoc standard red and black.)
- Zinc rich primer (marine applications) for corrosion resistance.
- Special Customer Decals: custom vinyl decal(s) of name and/or logo from artwork supplied by customer.
- Export Packaging: basic crane, boom and jib sections.

# Outline dimensions



# Outline dimensions



## Basic crane

|        |           |
|--------|-----------|
| Length | 34' 7"    |
| Width  | 9' 10"    |
| Height | 10' 10"   |
| Weight | 79,270 lb |

*Note: Weight includes carbody, upperworks, operator's cab, mast, boom-boist wire rope, maximum hoist and whip lines on drums, optional self-assembly jacks, full hydraulic fluid reservoir, and half tank of fuel.*

## Crawlers

|        |           |
|--------|-----------|
| Length | 26' 3"    |
| Width  | 4' 4"     |
| Height | 6' 3"     |
| Weight | 34,550 lb |

## Counterweight tray

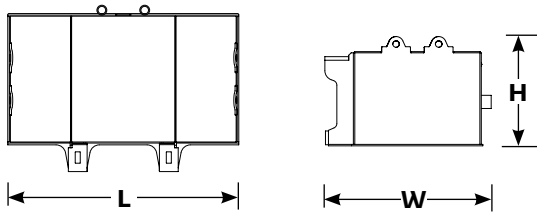
|        |           |
|--------|-----------|
| Length | 21' 4"    |
| Width  | 6' 5"     |
| Height | 1' 1"     |
| Weight | 32,500 lb |

## Upper side counterweight

|          |           |
|----------|-----------|
| Series 1 | x 6       |
| Series 2 | x 8       |
| Length   | 6' 8"     |
| Width    | 5' 1"     |
| Height   | 1' 7"     |
| Weight   | 11,025 lb |

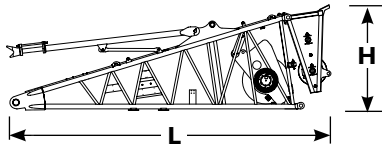


# Outline dimensions



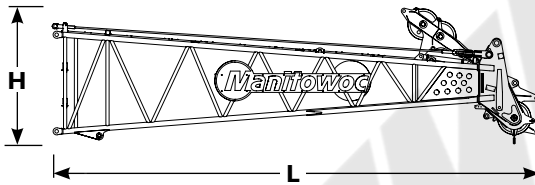
## Lower carbody counterweight

| Series 2 | x 2       |
|----------|-----------|
| Length   | 6' 4"     |
| Width    | 4' 4"     |
| Height   | 3' 0"     |
| Weight   | 17,640 lb |



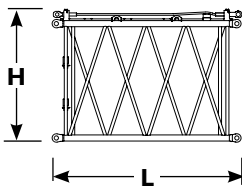
## 19.7' No. 74 boom butt and wire rope guide and boom stop

|        |          |
|--------|----------|
| Length | 22' 6"   |
| Width  | 6' 11"   |
| Height | 7' 5"    |
| Weight | 9,210 lb |



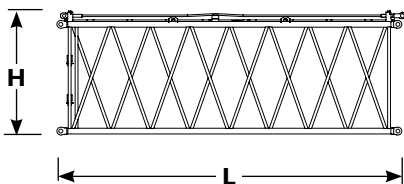
## 29.5' No. 74 boom top and wire rope guide and pendants

|        |          |
|--------|----------|
| Length | 31' 5"   |
| Width  | 6' 8"    |
| Height | 8' 4"    |
| Weight | 8,446 lb |



## 9.8' No. 74 boom insert and pendants

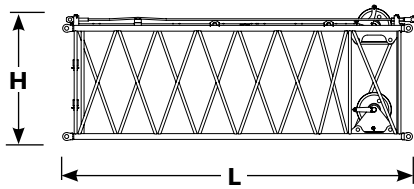
|        |          |
|--------|----------|
| Length | 10' 4"   |
| Width  | 6' 8"    |
| Height | 7' 3"    |
| Weight | 1,284 lb |



## 19.7' No. 74 boom insert and pendants

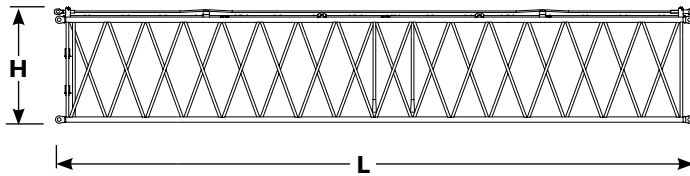
|        |          |
|--------|----------|
| Length | 20' 5"   |
| Width  | 6' 8"    |
| Height | 7' 3"    |
| Weight | 2,038 lb |

# Outline dimensions



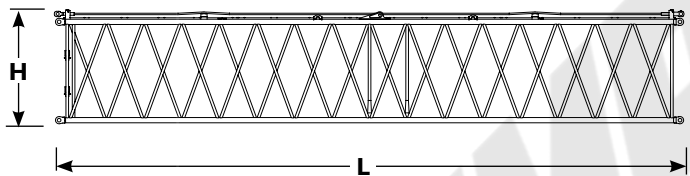
## 19.7' No. 74 boom insert with sheaves and pendants

|        |          |
|--------|----------|
| Length | 20' 5"   |
| Width  | 6' 8"    |
| Height | 7' 10"   |
| Weight | 3,036 lb |



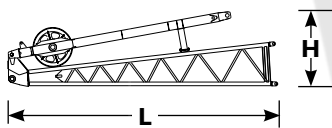
## 39.4' No. 74 boom insert and pendants

|        |          |
|--------|----------|
| Length | 40' 0"   |
| Width  | 6' 8"    |
| Height | 7' 3"    |
| Weight | 3,720 lb |



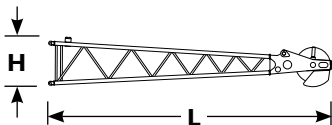
## 39.4' No. 74 boom insert with backstay and pendants

|        |          |
|--------|----------|
| Length | 40' 0"   |
| Width  | 6' 8"    |
| Height | 7' 3"    |
| Weight | 3,774 lb |



## 15' No. 134 jib butt, strut and stop

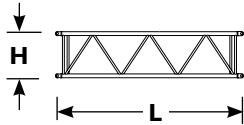
|        |          |
|--------|----------|
| Length | 15' 4"   |
| Width  | 2' 10"   |
| Height | 4' 3"    |
| Weight | 1,400 lb |



## 15' No. 134 jib top and pendants

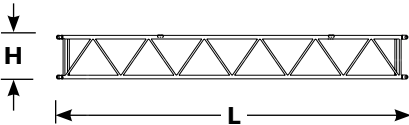
|        |          |
|--------|----------|
| Length | 16' 3"   |
| Width  | 2' 8"    |
| Height | 2' 8"    |
| Weight | 1,220 lb |

# Outline dimensions



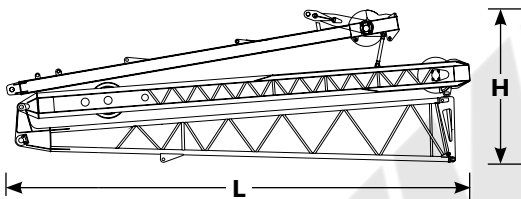
## 10' No. 134 jib insert and pendants

|        |        |
|--------|--------|
| Length | 10' 3" |
| Width  | 2' 8"  |
| Height | 2' 8"  |
| Weight | 482 lb |



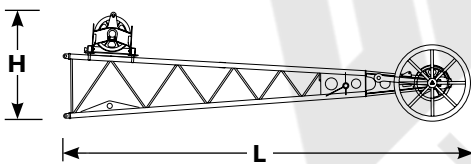
## 20' No. 134 jib insert and pendants

|        |        |
|--------|--------|
| Length | 20' 3" |
| Width  | 2' 8"  |
| Height | 2' 8"  |
| Weight | 750 lb |



## 27' No. 135 luffing jib butt and struts

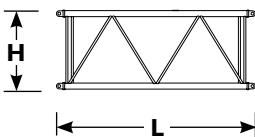
|        |          |
|--------|----------|
| Length | 28' 11"  |
| Width  | 5' 2"    |
| Height | 9' 11"   |
| Weight | 9,870 lb |



## 23' No. 135 luffing jib top, roller and pendants

|        |          |
|--------|----------|
| Length | 25' 7"   |
| Width  | 5' 0"    |
| Height | 6' 8"    |
| Weight | 4,374 lb |

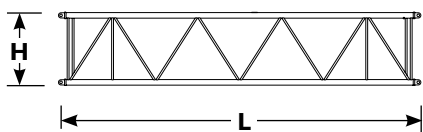
*Note: Includes wire rope guide.*



## 10' No. 135 luffing jib insert and pendants

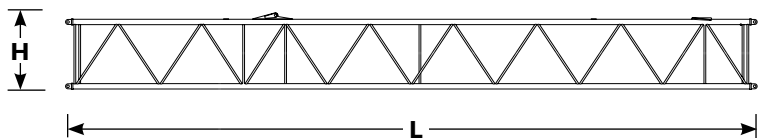
|        |        |
|--------|--------|
| Length | 10' 4" |
| Width  | 5' 0"  |
| Height | 4' 4"  |
| Weight | 840 lb |

# Outline dimensions



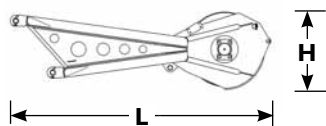
**20' No. 135 luffing jib insert and pendants**

|        |          |
|--------|----------|
| Length | 20' 4"   |
| Width  | 5' 0"    |
| Height | 4' 4"    |
| Weight | 1,350 lb |



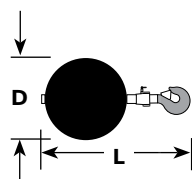
**40' No. 135 luffing jib insert with backstays and pendants**

|        |          |
|--------|----------|
| Length | 40' 4"   |
| Width  | 5' 0"    |
| Height | 4' 4"    |
| Weight | 2,315 lb |



**No. 74 upper boom point**

|        |        |
|--------|--------|
| Length | 8' 8"  |
| Width  | 1' 5"  |
| Height | 2' 8"  |
| Weight | 926 lb |



**Weight ball**

|                 |          |          |       |
|-----------------|----------|----------|-------|
| Capacity/Swivel | 15 USt   | Diameter | 3' 9" |
| Weight          | 1,310 lb | Length   | 1' 9" |

# Transport data

| Load summary   |   |        |        |        |        |        |        |        |        |        |
|--|---|--------|--------|--------|--------|--------|--------|--------|--------|--------|
| Item   | 276 ft No. 74 boom + 80 ft No. 134 fixed jib Series 2 counterweight<br>Quantity on trailer load #<br>(Does not include blocking, strapping, etc.) |        |        |        |        |        |        |        |        |        |
|  | lb  | 1      | 2      | 3      | 4      | 5      | 6      | 7      | 8      | 9      |
| Basic crane  | 79,267  | 1      |        |        |        |        |        |        |        |        |
| Crawlers   | 34,551  |        |        |        |        |        |        |        | 1      |        |
| Crawlers   | 34,551  |        |        |        |        |        |        |        |        | 1      |
| 29.5' No. 74 boom top, wire rope guide, pendants                 | 8,446   |        |        |        |        |        |        | 1      |        |        |
| 19.7' No. 74 boom butt, wire rope guide, boom stop               | 9,289   |        |        |        |        |        |        |        | 1      |        |
| Upper side counterweight   | 11,025  |        | 2      | 2      | 1      | 1      |        | 2      |        |        |
| 39.4' No. 74 boom insert, pendants                               | 3,719   |        | 1      | 1      | 1      | 1      |        |        |        |        |
| 39.4' No. 74 boom insert with backstay, pendants                 | 3,772   |        |        |        |        |        | 1      |        |        |        |
| 19.7' No. 74 boom insert, pendants                               | 3,036   |        |        |        |        |        |        | 1      |        |        |
| 9.8' No. 74 boom insert, pendants                                | 1,283   |        |        |        |        |        |        |        |        | 1      |
| Counterweight tray   | 32,498  |        |        |        |        |        | 1      |        |        |        |
| No. 74 upper boom point  | 926   |        | 1      |        |        |        |        |        |        |        |
| 15' No. 134 jib butt, strut, stop, 15' No. 134 jib top, pendants | 2,619   |        |        | 1      |        |        |        |        |        |        |
| 10' No. 134 jib insert, pendants                                 | 481   |        |        |        | 1      |        |        |        |        |        |
| 20' No. 134 jib insert, pendants                                 | 750   |        | 2      |        |        |        |        |        |        |        |
| Lower carbody counterweight                                      | 17,637  |        |        |        | 1      | 1      |        |        |        |        |
| Weight ball  | 1,310   |        |        |        |        |        |        | 1      |        |        |
| Miscellaneous  | 6,202   |        | 1      |        |        |        |        |        |        |        |
| Payload for each trailer (lb)                                    |   | 79,267 | 34,396 | 28,389 | 32,862 | 32,381 | 36,270 | 34,842 | 43,760 | 35,834 |

# Performance data

| Main and whip drum - 27,560 lb |   |     |     |     |     |     |
|--------------------------------|---|-----|-----|-----|-----|-----|
| Single line pull lb            | Single line pull/single line speed ft/min |     |     |     |     |     |
|                                | Layer                                     |     |     |     |     |     |
|                                | 1   | 2   | 3   | 4   | 5   | 6   |
| 0                              | 315                                       | 338 | 364 | 390 | 417 | 443 |
| 27,560                         | 220                                       | 236 | 256 | 272 | 292 | 312 |

| Luffing hoist auxiliary drum - 20,000 lb |   |     |     |     |     |     |     |     |
|--|---|-----|-----|-----|-----|-----|-----|-----|
| Single line pull lb                      | Single line pull/single line speed ft/min |     |     |     |     |     |     |     |
|  | Layer                                     |     |     |     |     |     |     |     |
|  | 1   | 2   | 3   | 4   | 5   | 6   | 7   | 8   |
| 20,000                                   | 135                                       | 144 | 157 | 167 | 180 | 190 | 203 | 213 |

# Performance data

| Hoist reeving for main load block<br>26 mm wire rope<br>No. 74 boom |                    |
|---|--------------------|
| No. Parts of Line   | Maximum Load<br>lb |
| 1   | 27,560             |
| 2   | 55,120             |
| 3   | 82,680             |
| 4   | 110,240            |
| 5   | 137,800            |
| 6   | 165,360            |
| 7   | 192,920            |
| 8   | 220,480            |
| 9   | 248,040            |
| 10  | 275,600            |
| 11  | 303,160            |
| 12  | 330,720            |
| 13  | 358,280            |
| 14  | 363,762            |

| Wire rope lengths<br>No. 74 boom<br>- or -<br>Fixed jib No. 134 on No. 74 boom |  |                  |                           |                        |
|--|--|------------------|---------------------------|------------------------|
| Boom or<br>boom and jib<br>length<br><br>ft                                    | Whip line<br>(front or auxiliary drum) |                  | Hoist line<br>(rear drum) |                        |
|  | 1 part<br><br>ft                       | 2 part<br><br>ft | ft                        | Total parts<br>of line |
| 49.2   | 148                                    | 213              | 820                       | 14                     |
| 59.1   | 180                                    | 246              | 902                       | 13                     |
| 68.9   | 197                                    | 279              | 968                       | 12                     |
| 78.7   | 213                                    | 295              | 1017                      | 11                     |
| 88.6   | 230                                    | 328              | 1050                      | 10                     |
| 98.4   | 246                                    | 361              | 1148                      | 10                     |
| 108.3  | 279                                    | 394              | 1148                      | 9                      |
| 118.3  | 295                                    | 427              | 1148                      | 8                      |
| 128.0  | 312                                    | 443              | 1214                      | 8                      |
| 137.8  | 328                                    | 476              | 1214                      | 7                      |
| 147.6  | 344                                    | 509              | 1214                      | 6                      |
| 157.5  | 377                                    | 541              | 1214                      | 6                      |
| 167.3  | 394                                    | 574              | 1230                      | 6                      |
| 177.2  | 410                                    | 591              | 1230                      | 5                      |
| 187.0  | 427                                    | 623              | 1230                      | 5                      |
| 196.9  | 443                                    | 656              | 1230                      | 4                      |
| 206.7  | 476                                    | 689              | 1230                      | 4                      |
| 216.5  | 492                                    | 722              | 1230                      | 3                      |
| 226.4  | 509                                    | 738              | 1230                      | 3                      |
| 236.2  | 525                                    | 771              | 1230                      | 3                      |
| 246.1  | 541                                    | 804              | 1230                      | 3                      |
| 255.9  | 574                                    | 837              | 1230                      | 3                      |
| 265.7  | 591                                    | 853              | 1230                      | 3                      |
| 275.6  | 607                                    | 886              | 1230                      | 2                      |
| 285.4  | 525                                    | 738              | —                         | —                      |
| 295.3  | 535                                    | 751              | —                         | —                      |
| 305.1  | 545                                    | 761              | —                         | —                      |

NOTE: Hoist and whip line lengths given in table will allow hook to touch ground. When block travel below ground is required, add additional rope equal to parts of line times added travel distance. Hoisting distance or line pull may be limited when block travel below ground is required.

Maximum wire rope length on auxiliary drum when used as Whip Line is 623'. When auxiliary drum is used as Luffing Jib Hoist, wire rope length required on drum is 689'. If auxiliary drum is used as Whip Line while equipped with 689' rope length, hoisting distance and line pull will be limited. Consult factory for further information.

# Performance data

## Wire rope lengths No. 135 luffing jib on No. 74 boom

| Boom length*<br>ft | Luffing jib hoist line |                                |
|--------------------|------------------------|--------------------------------|
|                    | Hoist line<br>ft       | Maximum required parts of line |
| 68.9               | 850                    | 4                              |
| 78.7               | 899                    | 4                              |
| 88.6               | 951                    | 4                              |
| 98.4               | 1001                   | 4                              |
| 108.3              | 1001                   | 4                              |
| 118.3              | 1050                   | 4                              |
| 128.0              | 1050                   | 4                              |
| 137.8              | 1099                   | 4                              |
| 147.6              | 1099                   | 3                              |
| 157.5              | 1099                   | 3                              |
| 167.3              | 1152                   | 3                              |

\*Hoist line lengths given in table include all luffing jib lengths.

NOTE: Hoist line lengths given in table will allow hook to touch ground. When block travel below ground is required, add additional rope equal to parts of line multiply by added travel distance. Hoisting distance or line pull may be limited when block travel below ground is required.

## Wire rope specifications 5:1 Safety Factor No. 74 boom - or - No. 134 fixed jib on No. 74 boom

| Function              | Rotation resistant Wire rope |            |
|-----------------------|------------------------------|------------|
|                       | Hoist line                   | Whip line  |
| Size wire rope        | 26 mm                        | 26 mm      |
| Maximum load per line | 27,560 lb                    | 27,560 lb  |
| Approximate weight    | 2.28 lb/ft                   | 2.28 lb/ft |

## Drum capacities - wire rope

|   | Maximum length      |                     |
|---|---------------------|---------------------|
|   | Operational         | Storage             |
| Front or rear grooved drum<br>26 mm wire rope | 1227 ft<br>6 layers | 1499 ft<br>7 layers |
| Auxiliary drum<br>26 mm wire rope             | 538 ft<br>7 layers  | 764 ft<br>9 layers  |
| Boom hoist drum<br>22 mm wire rope            | 558 ft<br>7 layers  | —                   |



# Performance data

| Maximum length<br>Maximum boom and luffing jib raising raising |   |                                   |  |                                   |
|--|---|-----------------------------------|--|-----------------------------------|
| Boom length<br>ft  | No. 135 luffing jib on No. 74 boom Series 2<br>Series 2 counterweight |                                   |  |                                   |
|  | In-line method  |                                   | Jack-knife method                        |                                   |
|  | Over end<br>of blocked<br>crawlers<br>ft                              | Over side<br>of<br>crawlers<br>ft | Over end<br>of blocked<br>crawlers<br>ft | Over side<br>of<br>crawlers<br>ft |
| 68.9   | 70-170  | 70-170                            |  |                                   |
| 78.7   | 70-170  | 70-170                            |  |                                   |
| 88.6   | 70-160  | 70-160                            | 170                                      | 170                               |
| 98.4   | 70-150  | 70-140                            | 160-170                                  | 150-170                           |
| 108.3  | 70-130  | 70-120                            | 140-170                                  | 130-170                           |
| 118.3  | 70-110  | 70-90                             | 120-170                                  | 100-170                           |
| 128.0  | 70-90   | 70                                | 100-170                                  | 80-170                            |
| 137.8  | 70  | —                                 | 80-170                                   | 70-170                            |
| 147.6  | —   | —                                 | 70-170                                   | 70-130                            |
| 157.5  | —   | —                                 | 70-170                                   | —                                 |
| 167.3  | —   | —                                 | 70-170                                   | —                                 |

For specific configurations refer to [www.cranelibrary.com](http://www.cranelibrary.com).

| Maximum length<br>Maximum boom and<br>fixed jib raising |   |                    |
|---|---|--------------------|
| Over front<br>of blocked<br>crawlers<br>ft              | No. 134 fixed jib on<br>No. 74 boom<br>Series 2 |                    |
|   | Main<br>boom<br>ft                              | Fixed<br>jib<br>ft |
|   | 275.6   | —                  |
|   | 265.7   | —                  |
|   | 255.9   | —                  |
|   | 246.1   | 40                 |
|   | 236.2   | 60                 |
|   | 226.4   | 80                 |

For specific configurations refer to [www.cranelibrary.com](http://www.cranelibrary.com).

| Maximum length<br>Maximum boom and<br>fixed jib raising |   |                    |
|---|---|--------------------|
| Over side<br>of crawlers<br>ft                          | No. 134 fixed jib on<br>No. 74 boom<br>Series 2 |                    |
|   | Main<br>boom<br>ft                              | Fixed<br>jib<br>ft |
|   | 255.9   | —                  |
|   | 236.2   | —                  |
|   | 226.4   | 40                 |
|   | 216.5   | 60                 |
|   | 206.7   | 80                 |

For specific configurations refer to [www.cranelibrary.com](http://www.cranelibrary.com).

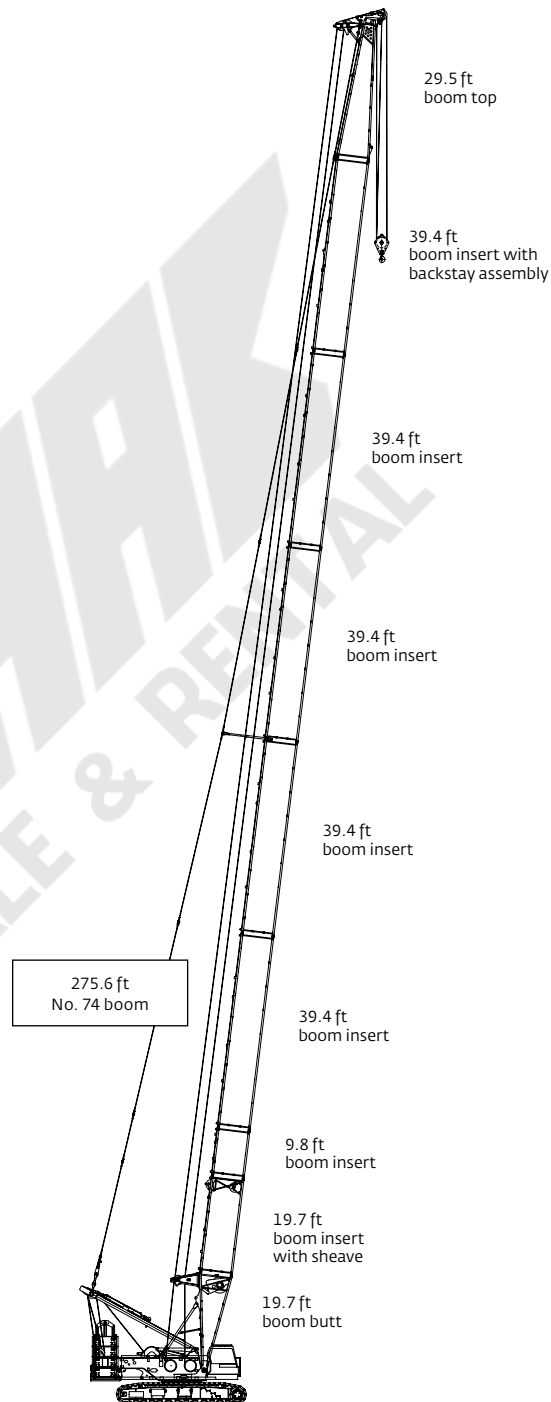
| Maximum length<br>Maximum boom and<br>fixed jib raising |   |                    |
|---|---|--------------------|
| Over rear<br>of blocked<br>crawlers<br>ft               | No. 134 fixed jib on<br>No. 74 boom<br>Series 2 |                    |
|   | Main<br>boom<br>ft                              | Fixed<br>jib<br>ft |
|   | 275.6   | —                  |
|   | 255.9   | —                  |
|   | 246.1   | 30                 |
|   | 236.2   | 50                 |
|   | 226.4   | 80                 |

For specific configurations refer to [www.cranelibrary.com](http://www.cranelibrary.com).

# Boom combinations

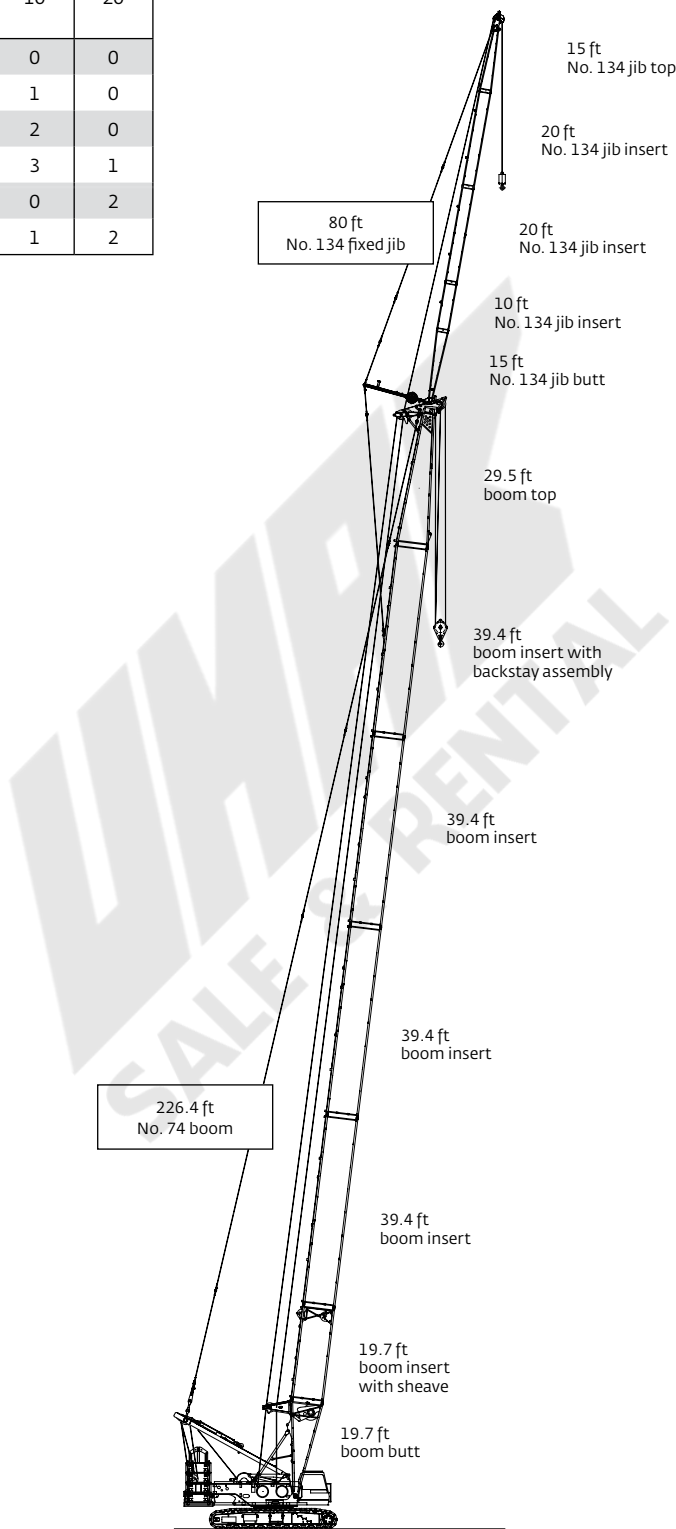
| No. 74 boom combinations |                        |      |      |       |
|--------------------------|------------------------|------|------|-------|
| Boom length ft           | Boom inserts length ft |      |      |       |
|                          | 9.8                    | 19.7 | 39.4 | 39.4* |
| 49.2                     | 0                      | 0    | 0    | 0     |
| 59.1                     | 1                      | 0    | 0    | 0     |
| 68.9                     | 0                      | 1    | 0    | 0     |
| 78.7                     | 1                      | 1    | 0    | 0     |
| 88.6                     | 0                      | 0    | 0    | 1     |
| 98.4                     | 1                      | 0    | 0    | 1     |
| 108.3                    | 0                      | 1    | 0    | 1     |
| 118.3                    | 1                      | 1    | 0    | 1     |
| 128.0                    | 0                      | 0    | 1    | 1     |
| 137.8                    | 1                      | 0    | 1    | 1     |
| 147.6                    | 0                      | 1    | 1    | 1     |
| 157.5                    | 1                      | 1    | 0    | 1     |
| 167.3                    | 0                      | 0    | 2    | 1     |
| 177.2                    | 1                      | 0    | 2    | 1     |
| 187.0                    | 0                      | 1    | 2    | 1     |
| 196.9                    | 1                      | 1    | 2    | 1     |
| 206.7                    | 0                      | 0    | 3    | 1     |
| 216.5                    | 1                      | 0    | 3    | 1     |
| 226.4                    | 0                      | 1    | 3    | 1     |
| 236.2                    | 1                      | 1    | 3    | 1     |
| 246.1                    | 0                      | 0    | 4    | 1     |
| 255.9                    | 1                      | 0    | 4    | 1     |
| 265.7                    | 0                      | 1    | 4    | 1     |
| 275.6                    | 1                      | 1    | 4    | 1     |

\* with fixed jib backstay assembly.



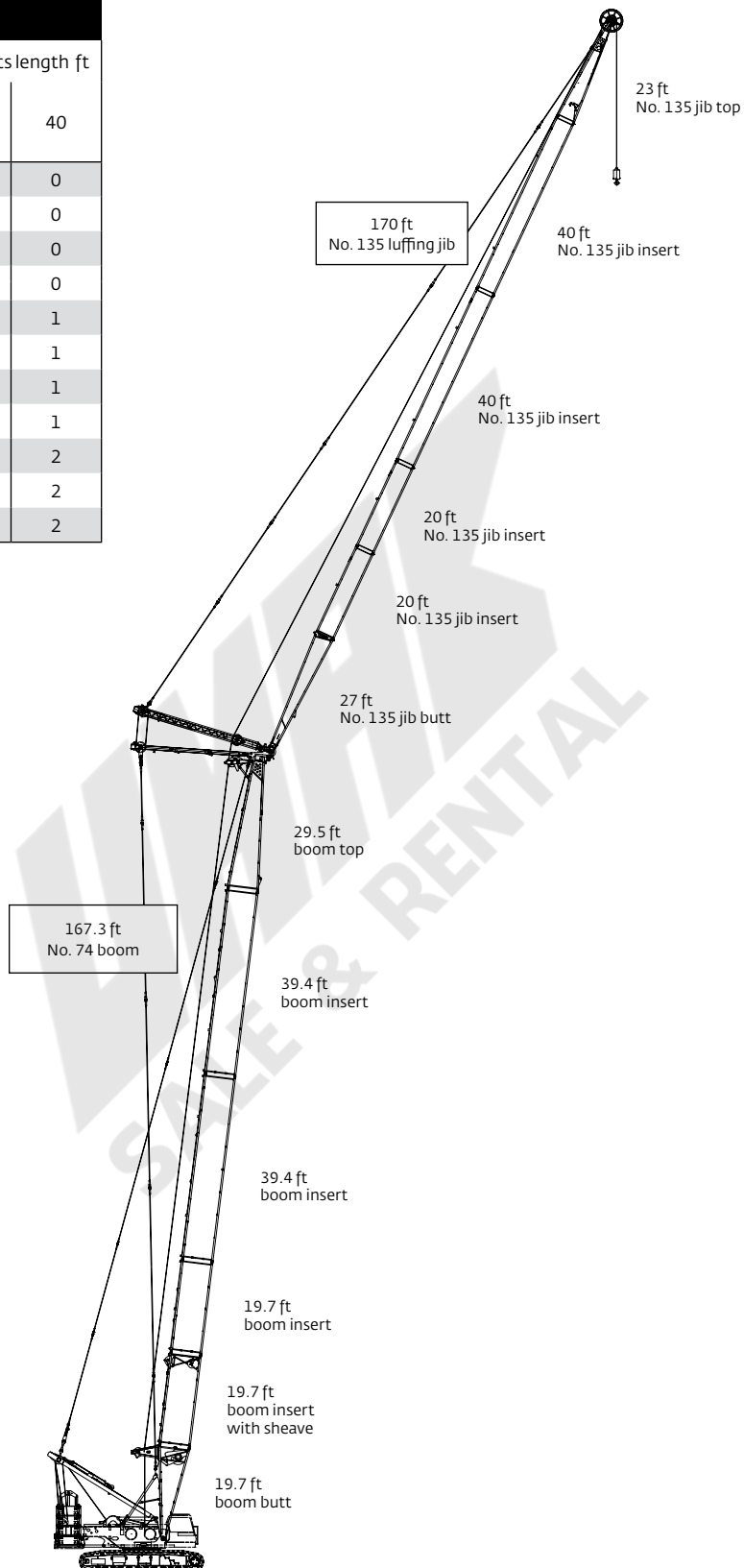
# Boom combinations

| No. 134 fixed jib combinations |                             |    |
|--------------------------------|-----------------------------|----|
| Fixed jib length ft            | Fixed jib inserts length ft |    |
|                                | 10                          | 20 |
| 30                             | 0                           | 0  |
| 40                             | 1                           | 0  |
| 50                             | 2                           | 0  |
| 60                             | 3                           | 1  |
| 70                             | 0                           | 2  |
| 80                             | 1                           | 2  |



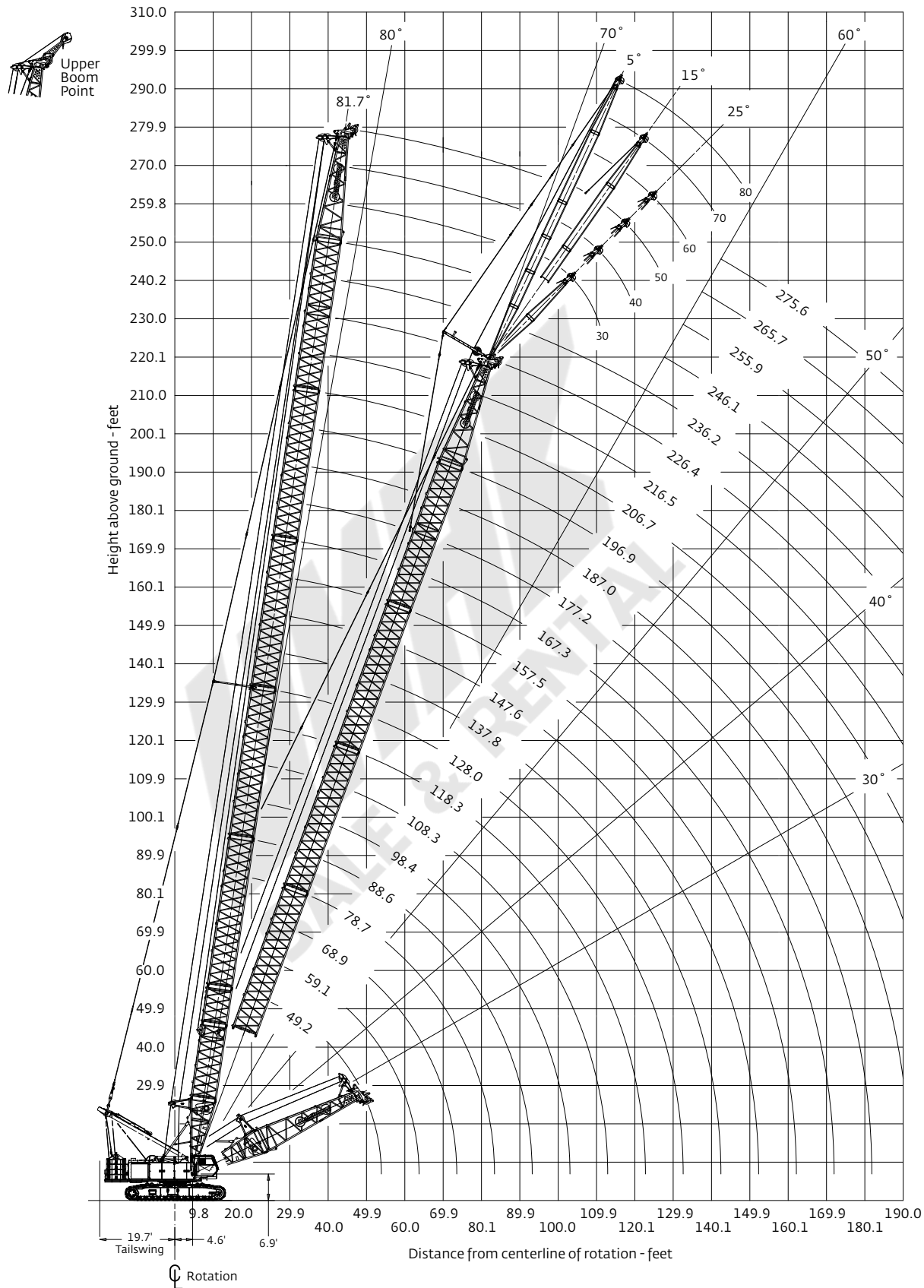
# Boom combinations

| No. 135 luffing jib combinations |                               |    |    |
|----------------------------------|-------------------------------|----|----|
| Luffing jib length ft            | Luffing jib inserts length ft |    |    |
|                                  | 10                            | 20 | 40 |
| 70                               | 0                             | 1  | 0  |
| 80                               | 1                             | 1  | 0  |
| 90                               | 0                             | 2  | 0  |
| 100                              | 1                             | 2  | 0  |
| 110                              | 0                             | 1  | 1  |
| 120                              | 1                             | 1  | 1  |
| 130                              | 0                             | 2  | 1  |
| 140                              | 1                             | 2  | 1  |
| 150                              | 0                             | 1  | 2  |
| 160                              | 1                             | 1  | 2  |
| 170                              | 0                             | 2  | 2  |



# Main boom range diagram

No. 74 boom



# Main boom load charts

## No. 74 boom

121,500 lb upper counterweight, 35,300 lb carbody counterweight

360° Rating

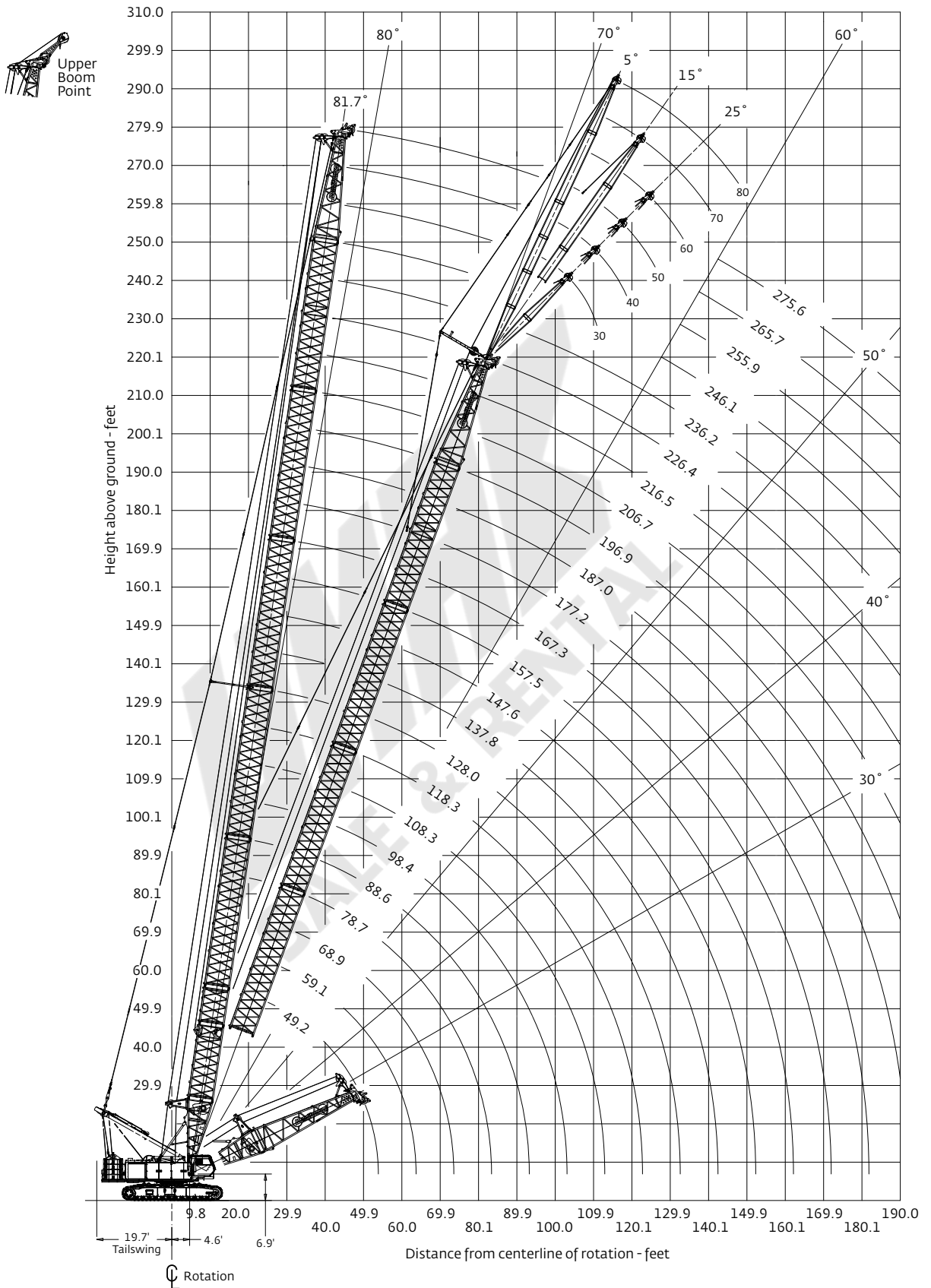
lb x 1000

|           | Boom length ft |       |       |       |       |       |       |       |       |      |      |      |      |
|-----------|----------------|-------|-------|-------|-------|-------|-------|-------|-------|------|------|------|------|
|           | 49             | 59    | 79    | 98    | 118   | 138   | 157   | 177   | 197   | 217  | 236  | 256  | 276  |
| Radius ft |                |       |       |       |       |       |       |       |       |      |      |      |      |
| 14        | 363.8          |       |       |       |       |       |       |       |       |      |      |      |      |
| 16        | 342.1          | 337.8 |       |       |       |       |       |       |       |      |      |      |      |
| 18        | 305.1          | 305.0 |       |       |       |       |       |       |       |      |      |      |      |
| 22        | 250.5          | 250.4 | 249.5 | 248.9 |       |       |       |       |       |      |      |      |      |
| 26        | 212.0          | 212.0 | 211.1 | 210.6 | 207.1 |       |       |       |       |      |      |      |      |
| 30        | 170.0          | 170.5 | 170.6 | 170.7 | 170.6 | 170.4 | 156.6 |       |       |      |      |      |      |
| 34        | 141.0          | 141.5 | 141.5 | 141.5 | 141.4 | 141.1 | 141.2 | 132.4 |       |      |      |      |      |
| 40        | 111.6          | 112.1 | 112.1 | 112.0 | 111.8 | 111.5 | 111.5 | 111.1 | 108.2 | 86.5 |      |      |      |
| 46        | 91.7           | 92.2  | 92.2  | 92.1  | 91.9  | 91.5  | 91.5  | 91.1  | 90.6  | 83.3 | 73.6 | 65.9 |      |
| 50        | 81.5           | 82.2  | 82.2  | 82.1  | 81.9  | 81.4  | 81.5  | 81.0  | 80.5  | 80.0 | 72.0 | 64.9 | 54.5 |
| 55        |                | 72.0  | 72.1  | 72.0  | 71.8  | 71.3  | 71.4  | 70.8  | 70.3  | 69.8 | 69.1 | 63.8 | 53.6 |
| 70        |                |       | 51.7  | 51.7  | 51.5  | 51.0  | 51.0  | 50.4  | 49.9  | 49.3 | 48.6 | 48.0 | 47.3 |
| 85        |                |       |       | 39.3  | 39.1  | 38.7  | 38.7  | 38.1  | 37.6  | 36.9 | 36.2 | 35.5 | 34.9 |
| 100       |                |       |       | 30.7  | 30.8  | 30.4  | 30.4  | 29.8  | 29.3  | 28.6 | 27.8 | 27.2 | 26.5 |
| 115       |                |       |       |       | 24.7  | 24.4  | 24.4  | 23.8  | 23.3  | 22.7 | 21.9 | 21.2 | 20.5 |
| 130       |                |       |       |       |       | 19.8  | 19.9  | 19.3  | 18.8  | 18.2 | 17.4 | 16.7 | 16.0 |
| 145       |                |       |       |       |       |       | 16.4  | 15.8  | 15.3  | 14.7 | 13.9 | 13.2 | 12.5 |
| 160       |                |       |       |       |       |       |       | 13.0  | 12.5  | 11.8 | 11.0 | 10.3 | 9.7  |
| 175       |                |       |       |       |       |       |       | 10.5  | 10.1  | 9.5  | 8.7  | 8.0  | 7.4  |
| 190       |                |       |       |       |       |       |       |       | 8.1   | 7.5  | 6.8  | 6.1  | 5.4  |
| 205       |                |       |       |       |       |       |       |       |       | 5.8  | 5.1  | 4.4  | 3.8  |
| 225       |                |       |       |       |       |       |       |       |       |      | 3.2  |      |      |

For complete chart, refer to [www.cranelibrary.com](http://www.cranelibrary.com).

# Fixed jib range diagram

No. 134 fixed jib on No. 74 boom



# Fixed jib load charts

## No. 134 fixed jib on No. 74 boom

121,500 lb upper counterweight, 35,300 lb carbody counterweight

360° Rating

lb x 1000

### 5° offset

| 30.0 ft fixed jib length |                |      |      |      |      |
|--------------------------|----------------|------|------|------|------|
|                          | Boom length ft |      |      |      |      |
|                          | 89             | 128  | 167  | 207  | 246  |
| Radius ft                |                |      |      |      |      |
| 30                       | 55.1           |      |      |      |      |
| 45                       | 55.1           | 55.1 | 55.1 |      |      |
| 60                       | 55.1           | 55.1 | 55.1 | 55.1 | 48.0 |
| 80                       | 44.1           | 42.7 | 41.7 | 40.4 | 39.0 |
| 100                      | 32.2           | 30.8 | 29.9 | 28.5 | 27.0 |
| 120                      |                | 23.2 | 22.3 | 20.9 | 19.3 |
| 140                      |                | 17.8 | 17.0 | 15.6 | 14.0 |
| 160                      |                |      | 13.0 | 11.7 | 10.1 |
| 180                      |                |      | 10.0 | 8.7  | 7.1  |
| 200                      |                |      |      | 6.3  | 4.7  |
| 220                      |                |      |      | 4.3  |      |

### 25° offset

| 30.0 ft fixed jib length |                |      |      |      |      |
|--------------------------|----------------|------|------|------|------|
|                          | Boom length ft |      |      |      |      |
|                          | 89             | 128  | 167  | 207  | 246  |
| Radius ft                |                |      |      |      |      |
| 40                       | 46.4           |      |      |      |      |
| 55                       | 39.7           | 43.5 | 46.3 |      |      |
| 70                       | 34.9           | 39.0 | 42.1 | 44.4 | 46.3 |
| 90                       | 30.7           | 34.6 | 36.3 | 35.2 | 33.9 |
| 110                      |                | 27.3 | 26.5 | 25.4 | 24.1 |
| 130                      |                |      | 20.0 | 18.8 | 17.4 |
| 150                      |                |      | 15.3 | 14.1 | 12.7 |
| 170                      |                |      |      | 10.5 | 9.1  |
| 190                      |                |      |      |      | 6.3  |
| 210                      |                |      |      |      | 4.0  |

### 5° offset

| 50.0 ft fixed jib length |                |      |      |      |
|--------------------------|----------------|------|------|------|
|                          | Boom length ft |      |      |      |
|                          | 89             | 128  | 167  | 207  |
| Radius ft                |                |      |      |      |
| 35                       | 44.5           |      |      |      |
| 50                       | 41.1           | 42.0 | 41.6 |      |
| 65                       | 38.1           | 39.7 | 39.8 | 38.7 |
| 85                       | 34.5           | 36.9 | 37.7 | 37.0 |
| 105                      | 29.7           | 29.4 | 28.3 | 27.0 |
| 125                      | 23.9           | 22.4 | 21.4 | 20.0 |
| 145                      |                | 17.5 | 16.4 | 15.0 |
| 165                      |                | 13.7 | 12.7 | 11.4 |
| 185                      |                |      | 9.9  | 8.5  |
| 205                      |                |      | 7.5  | 6.2  |
| 225                      |                |      |      | 4.3  |

### 25° offset

| 50.0 ft fixed jib length |                |      |      |      |
|--------------------------|----------------|------|------|------|
|                          | Boom length ft |      |      |      |
|                          | 89             | 128  | 167  | 207  |
| Radius ft                |                |      |      |      |
| 55                       | 29.6           |      |      |      |
| 70                       | 25.6           | 28.0 | 29.8 |      |
| 85                       | 22.6           | 25.2 | 27.1 | 28.6 |
| 105                      | 19.8           | 22.3 | 24.3 | 25.9 |
| 125                      |                | 20.2 | 22.1 | 21.4 |
| 145                      |                | 18.0 | 17.3 | 16.2 |
| 165                      |                |      | 13.4 | 12.2 |
| 185                      |                |      |      | 9.2  |
| 200                      |                |      |      | 7.2  |

For complete chart, refer to [www.cranelibrary.com](http://www.cranelibrary.com).



# Fixed jib load charts

## No. 134 fixed jib on No. 74 boom

121,500 lb upper counterweight, 35,300 lb carbody counterweight

360° Rating

lb x 1000

### 5° offset

| 60.0 ft fixed jib length |                |      |      |      |
|--------------------------|----------------|------|------|------|
|                          | Boom length ft |      |      |      |
|                          | 89             | 128  | 167  | 207  |
| Radius ft                |                |      |      |      |
| 40                       | 37.2           |      |      |      |
| 55                       | 34.0           | 35.1 | 34.9 |      |
| 70                       | 31.2           | 32.8 | 33.3 | 32.6 |
| 90                       | 28.2           | 30.2 | 31.2 | 31.0 |
| 110                      | 24.8           | 27.6 | 26.5 | 25.1 |
| 130                      | 20.7           | 21.2 | 20.1 | 18.7 |
| 150                      |                | 16.7 | 15.6 | 14.2 |
| 170                      |                | 13.2 | 12.1 | 10.7 |
| 190                      |                |      | 9.4  | 8.0  |
| 210                      |                |      | 7.2  | 5.8  |
| 230                      |                |      |      | 4.0  |

### 25° offset

| 60.0 ft fixed jib length |                |      |      |      |
|--------------------------|----------------|------|------|------|
|                          | Boom length ft |      |      |      |
|                          | 89             | 128  | 167  | 207  |
| Radius ft                |                |      |      |      |
| 60                       | 25.7           |      |      |      |
| 75                       | 22.1           | 24.2 | 25.7 |      |
| 90                       | 19.4           | 21.6 | 23.3 | 24.6 |
| 110                      | 16.8           | 19.0 | 20.7 | 22.2 |
| 130                      |                | 17.0 | 18.7 | 20.2 |
| 150                      |                | 15.6 | 16.7 | 15.6 |
| 170                      |                |      | 13.0 | 11.9 |
| 190                      |                |      |      | 8.9  |
| 210                      |                |      |      | 6.5  |
| 215                      |                |      |      | 6.0  |

### 5° offset

| 80.0 ft fixed jib length |                |      |      |      |
|--------------------------|----------------|------|------|------|
|                          | Boom length ft |      |      |      |
|                          | 89             | 128  | 167  | 207  |
| Radius ft                |                |      |      |      |
| 40                       | 23.7           |      |      |      |
| 55                       | 22.0           | 21.9 | 21.5 |      |
| 70                       | 20.4           | 20.5 | 20.3 | 19.7 |
| 90                       | 18.5           | 18.7 | 18.7 | 18.4 |
| 110                      | 17.0           | 17.2 | 17.3 | 17.2 |
| 130                      | 15.9           | 16.1 | 16.1 | 16.0 |
| 150                      | 14.5           | 15.1 | 15.2 | 14.4 |
| 170                      |                | 13.6 | 12.4 | 11.0 |
| 190                      |                | 10.9 | 9.8  | 8.3  |
| 210                      |                |      | 7.6  | 6.1  |
| 230                      |                |      | 5.8  | 4.3  |

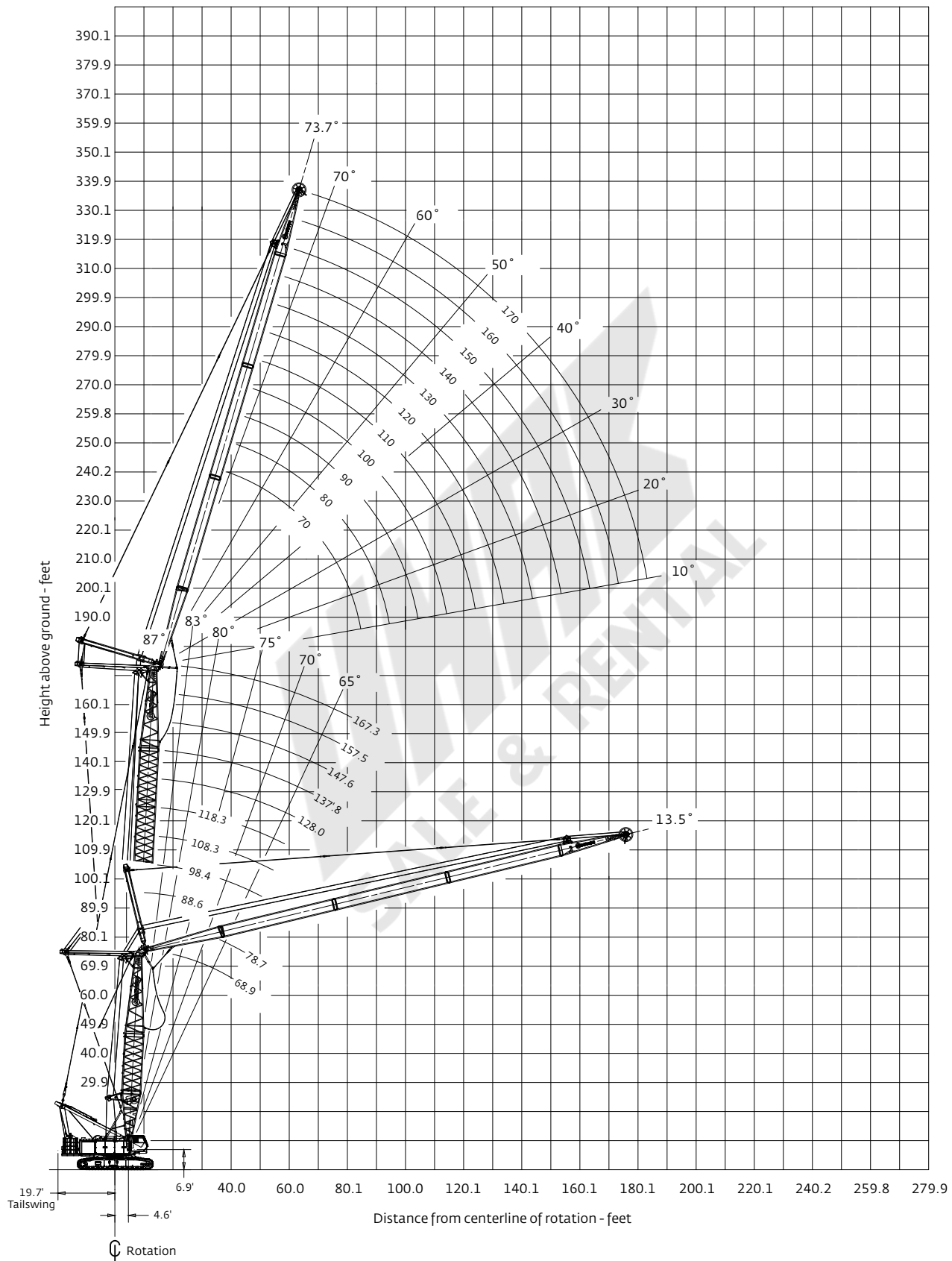
### 25° offset

| 80.0 ft fixed jib length |                |      |      |      |
|--------------------------|----------------|------|------|------|
|                          | Boom length ft |      |      |      |
|                          | 89             | 128  | 167  | 207  |
| Radius ft                |                |      |      |      |
| 70                       | 19.1           |      |      |      |
| 85                       | 16.4           | 17.9 | 19.1 |      |
| 100                      | 14.3           | 15.9 | 17.2 | 18.3 |
| 120                      | 12.3           | 13.9 | 15.2 | 16.3 |
| 140                      | 10.8           | 12.4 | 13.7 | 14.8 |
| 160                      |                | 11.2 | 12.4 | 13.5 |
| 180                      |                | 10.3 | 11.4 | 10.9 |
| 200                      |                |      | 9.4  | 8.2  |
| 220                      |                |      |      | 6.0  |
| 240                      |                |      |      | 4.2  |

For complete chart, refer to [www.cranelibrary.com](http://www.cranelibrary.com).

# Luffing jib range diagram

No. 135 luffing jib on No. 74 boom



# Luffing jib load charts

## No. 135 luffing jib on No. 74 boom

121,500 lb upper counterweight, 35,300 lb carbody counterweight

360° Rating

lb x 1000

87° boom angle

| 70 ft luffing jib length |                |       |       |       |       |
|--------------------------|----------------|-------|-------|-------|-------|
|                          | Boom length ft |       |       |       |       |
|                          | 68.9           | 88.6  | 108.3 | 137.8 | 167.3 |
| Radius ft                |                |       |       |       |       |
| 30                       | 110.2          | 105.8 |       |       |       |
| 36                       | 110.2          | 105.8 | 97.9  | 85.9  | 74.0  |
| 40                       | 102.5          | 102.7 | 97.9  | 85.7  | 72.7  |
| 50                       | 86.1           | 83.2  | 80.9  | 75.3  | 64.9  |
| 60                       | 71.2           | 69.5  | 68.1  | 64.1  | 57.0  |
| 75                       | 49.3           | 51.8  | 53.3  | 53.2  | 46.4  |
| 95                       |                |       |       |       |       |
| 115                      |                |       |       |       |       |
| 135                      |                |       |       |       |       |
| 155                      |                |       |       |       |       |
| 175                      |                |       |       |       |       |

| 100 ft luffing jib length |                |      |       |       |       |
|---------------------------|----------------|------|-------|-------|-------|
|                           | Boom length ft |      |       |       |       |
|                           | 68.9           | 88.6 | 108.3 | 137.8 | 167.3 |
| Radius ft                 |                |      |       |       |       |
| 30                        |                |      |       |       |       |
| 36                        |                |      |       |       |       |
| 40                        | 80.7           | 79.2 | 74.3  | 66.4  |       |
| 50                        | 73.2           | 72.8 | 72.0  | 65.6  | 52.4  |
| 60                        | 66.8           | 66.7 | 66.4  | 59.2  | 47.8  |
| 75                        | 53.2           | 53.1 | 52.9  | 49.3  | 40.5  |
| 95                        | 38.7           | 39.3 | 39.1  | 37.6  | 32.0  |
| 115                       |                |      |       |       | 25.4  |
| 135                       |                |      |       |       |       |
| 155                       |                |      |       |       |       |
| 175                       |                |      |       |       |       |

| 140 ft luffing jib length |                |      |       |       |       |
|---------------------------|----------------|------|-------|-------|-------|
|                           | Boom length ft |      |       |       |       |
|                           | 68.9           | 88.6 | 108.3 | 137.8 | 167.3 |
| Radius ft                 |                |      |       |       |       |
| 30                        |                |      |       |       |       |
| 36                        |                |      |       |       |       |
| 40                        |                |      |       |       |       |
| 50                        | 47.7           | 46.3 | 44.7  |       |       |
| 60                        | 45.9           | 44.6 | 43.2  | 40.6  | 34.6  |
| 75                        | 40.9           | 40.9 | 40.7  | 37.6  | 31.5  |
| 95                        | 34.5           | 34.7 | 34.8  | 31.9  | 26.8  |
| 115                       | 29.1           | 29.4 | 29.7  | 26.2  | 22.3  |
| 135                       | 21.6           | 22.4 | 22.7  | 21.4  | 18.5  |
| 155                       |                |      |       |       | 14.3  |
| 175                       |                |      |       |       |       |

| 170 ft luffing jib length |                |      |       |       |       |
|---------------------------|----------------|------|-------|-------|-------|
|                           | Boom length ft |      |       |       |       |
|                           | 68.9           | 88.6 | 108.3 | 137.8 | 167.3 |
| Radius ft                 |                |      |       |       |       |
| 30                        |                |      |       |       |       |
| 36                        |                |      |       |       |       |
| 40                        |                |      |       |       |       |
| 50                        |                |      |       |       |       |
| 60                        | 36.3           | 35.9 | 34.9  | 31.0  |       |
| 75                        | 31.7           | 31.6 | 31.4  | 29.2  | 25.0  |
| 95                        | 26.0           | 26.2 | 26.3  | 26.1  | 22.5  |
| 115                       | 21.1           | 21.4 | 21.6  | 21.9  | 19.7  |
| 135                       | 17.0           | 17.3 | 17.6  | 18.0  | 17.0  |
| 155                       | 13.7           | 13.9 | 14.2  | 14.6  | 14.1  |
| 175                       | 10.2           | 10.4 | 10.6  | 11.0  | 10.8  |

For complete chart, refer to [www.cranelibrary.com](http://www.cranelibrary.com).

# Luffing jib load charts

## No. 135 luffing jib on No. 74 boom

121,500 lb upper counterweight, 35,300 lb carbody counterweight

360° Rating

lb x 1000

75° boom angle

| 70 ft luffing jib length |                |      |       |       |       |
|--------------------------|----------------|------|-------|-------|-------|
|                          | Boom length ft |      |       |       |       |
|                          | 68.9           | 88.6 | 108.3 | 137.8 | 167.3 |
| Radius ft                |                |      |       |       |       |
| 60                       | 65.4           |      |       |       |       |
| 70                       | 53.8           | 52.3 | 50.5  |       |       |
| 80                       | 45.4           | 44.1 | 42.6  | 40.1  |       |
| 95                       |                | 35.3 | 34.2  | 32.2  | 30.1  |
| 110                      |                |      |       | 26.4  | 24.8  |
| 125                      |                |      |       |       |       |
| 140                      |                |      |       |       |       |
| 150                      |                |      |       |       |       |
| 165                      |                |      |       |       |       |
| 175                      |                |      |       |       |       |
| 190                      |                |      |       |       |       |

| 100 ft luffing jib length |                |      |       |       |       |
|---------------------------|----------------|------|-------|-------|-------|
|                           | Boom length ft |      |       |       |       |
|                           | 68.9           | 88.6 | 108.3 | 137.8 | 167.3 |
| Radius ft                 |                |      |       |       |       |
| 60                        |                |      |       |       |       |
| 70                        |                |      |       |       |       |
| 80                        | 44.7           | 43.2 |       |       |       |
| 95                        | 35.8           | 34.7 | 33.4  | 31.2  |       |
| 110                       | 29.6           | 28.6 | 27.5  | 25.7  | 23.8  |
| 125                       |                | 24   | 23.1  | 21.5  | 19.9  |
| 140                       |                |      |       | 18.2  | 16.9  |
| 150                       |                |      |       |       | 15.1  |
| 165                       |                |      |       |       |       |
| 175                       |                |      |       |       |       |
| 190                       |                |      |       |       |       |

| 140 ft luffing jib length |                |      |       |       |       |
|---------------------------|----------------|------|-------|-------|-------|
|                           | Boom length ft |      |       |       |       |
|                           | 68.9           | 88.6 | 108.3 | 137.8 | 167.3 |
| Radius ft                 |                |      |       |       |       |
| 80                        |                |      |       |       |       |
| 95                        | 34.9           | 33.7 |       |       |       |
| 110                       | 28.8           | 27.7 | 26.5  | 24.6  |       |
| 125                       | 24.2           | 23.2 | 22.2  | 20.5  | 18.9  |
| 140                       | 20.6           | 19.8 | 18.9  | 17.4  | 15.9  |
| 150                       | 18.6           | 17.9 | 17.1  | 15.7  | 14.3  |
| 165                       |                | 15.4 | 14.7  | 13.5  | 12.3  |
| 175                       |                |      |       | 12.2  | 11.1  |
| 190                       |                |      |       |       | 9.4   |
| 205                       |                |      |       |       |       |
| 220                       |                |      |       |       |       |

| 170 ft luffing jib length |                |      |       |       |       |
|---------------------------|----------------|------|-------|-------|-------|
|                           | Boom length ft |      |       |       |       |
|                           | 68.9           | 88.6 | 108.3 | 137.8 | 167.3 |
| Radius ft                 |                |      |       |       |       |
| 80                        |                |      |       |       |       |
| 95                        |                |      |       |       |       |
| 110                       | 25.7           | 26.7 |       |       |       |
| 125                       | 22.2           | 22.6 | 21.5  | 19.8  |       |
| 140                       | 19.0           | 19.2 | 18.2  | 16.7  | 15.2  |
| 150                       | 17.1           | 17.3 | 16.4  | 15.0  | 13.6  |
| 165                       | 14.6           | 14.9 | 14.1  | 12.8  | 11.6  |
| 175                       | 12.7           | 13.5 | 12.8  | 11.6  | 10.5  |
| 190                       | 10.2           | 11.0 | 11.1  | 10.0  | 9.0   |
| 205                       |                |      |       | 8.6   | 7.7   |
| 220                       |                |      |       |       | 6.5   |

For complete chart, refer to [www.cranelibrary.com](http://www.cranelibrary.com).

# Luffing jib load charts

## No. 135 luffing jib on No. 74 boom

121,500 lb upper counterweight, 35,300 lb carbody counterweight

360° Rating

lb x 1000

65° boom angle

| 70 ft luffing jib length |                |      |       |       |       |
|--------------------------|----------------|------|-------|-------|-------|
|                          | Boom length ft |      |       |       |       |
|                          | 68.9           | 88.6 | 108.3 | 137.8 | 167.3 |
| Radius ft                |                |      |       |       |       |
| 80                       | 42.2           |      |       |       |       |
| 95                       | 33.8           | 31.9 | 29.8  |       |       |
| 110                      |                | 26.2 | 24.5  | 21.6  |       |
| 125                      |                |      |       | 18    | 15.5  |
| 140                      |                |      |       |       | 13    |
| 150                      |                |      |       |       |       |
| 165                      |                |      |       |       |       |
| 175                      |                |      |       |       |       |
| 190                      |                |      |       |       |       |
| 205                      |                |      |       |       |       |
| 220                      |                |      |       |       |       |

| 100 ft luffing jib length |                |      |       |       |       |
|---------------------------|----------------|------|-------|-------|-------|
|                           | Boom length ft |      |       |       |       |
|                           | 68.9           | 88.6 | 108.3 | 137.8 | 167.3 |
| Radius ft                 |                |      |       |       |       |
| 80                        |                |      |       |       |       |
| 95                        |                |      |       |       |       |
| 110                       | 27.2           | 25.4 |       |       |       |
| 125                       | 22.8           | 21.3 | 19.7  |       |       |
| 140                       |                | 18.1 | 16.7  | 14.3  | 11.9  |
| 150                       |                |      | 15    | 12.8  | 10.7  |
| 165                       |                |      |       |       | 9     |
| 175                       |                |      |       |       | 8     |
| 190                       |                |      |       |       |       |
| 205                       |                |      |       |       |       |
| 220                       |                |      |       |       |       |

| 140 ft luffing jib length |                |      |       |       |       |
|---------------------------|----------------|------|-------|-------|-------|
|                           | Boom length ft |      |       |       |       |
|                           | 68.9           | 88.6 | 108.3 | 137.8 | 167.3 |
| Radius ft                 |                |      |       |       |       |
| 80                        |                |      |       |       |       |
| 95                        |                |      |       |       |       |
| 110                       |                |      |       |       |       |
| 125                       | 21.9           |      |       |       |       |
| 140                       | 18.6           | 17.2 | 15.7  |       |       |
| 150                       | 16.8           | 15.5 | 14.1  | 11.7  |       |
| 165                       | 14.5           | 13.3 | 12.1  | 9.9   | 7.9   |
| 175                       | 13.1           | 12.1 | 10.9  | 8.9   | 7     |
| 190                       |                |      | 9.3   | 7.6   | 5.8   |
| 205                       |                |      |       |       | 4.8   |
| 220                       |                |      |       |       |       |

| 170 ft luffing jib length |                |      |       |       |       |
|---------------------------|----------------|------|-------|-------|-------|
|                           | Boom length ft |      |       |       |       |
|                           | 68.9           | 88.6 | 108.3 | 137.8 | 167.3 |
| Radius ft                 |                |      |       |       |       |
| 80                        |                |      |       |       |       |
| 95                        |                |      |       |       |       |
| 110                       |                |      |       |       |       |
| 125                       |                |      |       |       |       |
| 140                       | 18             |      |       |       |       |
| 150                       | 16.2           | 14.8 |       |       |       |
| 165                       | 13.9           | 12.7 | 11.4  |       |       |
| 175                       | 12.6           | 11.5 | 10.2  | 8.2   |       |
| 190                       | 10.9           | 9.9  | 8.8   | 6.9   | 5.1   |
| 205                       | 9.4            | 8.5  | 7.5   | 5.8   | 4.1   |
| 220                       |                |      | 6.4   | 4.8   |       |

For complete chart, refer to [www.cranelibrary.com](http://www.cranelibrary.com).

# Manitowoc Crane Care

Manitowoc Crane Care is the industry's most advanced service and support program, designed to keep your cranes up and running. Manitowoc's distributor network and customer support personnel are available to support you 24 hours a day, 7 days a week, 365 days a year. There are five key disciplines of Manitowoc Crane Care:

## **Parts**

Genuine Manitowoc replacement parts are accessible through your distributor.

## **Service and technical support**

Assistance with crane selection, lift planning and ground bearing calculations or field service and maintenance.

## **Technical publications**

Operator, parts, service and capacity chart manuals are available in multiple formats in major languages.

## **Training**

A variety of training courses are available online or through Manitowoc training centers.

## **EnCORE**

Rebuild, repair, remanufacture or exchange your current crane through our local network, for a fraction of the cost of a new crane.

[www.manitowoccranecare.com](http://www.manitowoccranecare.com)

## **CraneSTAR**

CraneSTAR is an exclusive and innovative crane asset management system that helps improve your profitability and reduce costs by remotely monitoring critical crane data. Visit [www.cranestar.com](http://www.cranestar.com) for more information.



## Manیتowoc Cranes

### Regional headquarters

#### Americas

**Manیتowoc, Wisconsin, USA**

Tel: +1 920 684 6621

Fax: +1 920 683 6277

**Shady Grove, Pennsylvania, USA**

Tel: +1 717 597 8121

Fax: +1 717 597 4062

#### Europe, Middle East, Africa

**Ecully, France**

Tel: +33 (0)4 72 18 20 20

Fax: +33 (0)4 72 18 20 00

#### China

**Shanghai, China**

Tel: +86 21 6457 0066

Fax: +86 21 6457 4955

#### Greater Asia-Pacific

**Singapore**

Tel: +65 6264 1188

Fax: +65 6862 4040

### Regional offices

#### Americas

**Brazil**

Alphaville

**Mexico**

Monterrey

**Chile**

Santiago

#### Europe, Middle East, Africa

**Czech Republic**

Netvorice

**France**

Baudemont

Cergy

Decines

**Germany**

Langenfeld

**Hungary**

Budapest

**Italy**

Lainate

**Netherlands**

Breda

**Poland**

Warsaw

**Portugal**

Baltar

**Russia**

Moscow

**South Africa**

Johannesburg

**U.A.E.**

Dubai

**U.K.**

Buckingham

#### China

Beijing

Chengdu

Guangzhou

Xian

#### Greater Asia-Pacific

**Australia**

Brisbane

Melbourne

Sydney

**India**

Chennai

Delhi

Hyderabad

Pune

**Korea**

Seoul

**Philippines**

Makati City

**Singapore**

### Factories

**Brazil**

Passo Fundo

**China**

TaiAn

Zhangjiagang

**France**

Charlieu

Moulins

**Germany**

Wilhelmshaven

**India**

Pune

**Italy**

Niella Tanaro

**Portugal**

Baltar

Fânzeres

**Slovakia**

Saris

**USA**

Manیتowoc

Port Washington

Shady Grove

This document is non-contractual. Constant improvement and engineering progress make it necessary that we reserve the right to make specification, equipment, and price changes without notice. Illustrations shown may include optional equipment and accessories and may not include all standard equipment.