

MANITOWOC MODEL 2000 THRU 4000
BASIC SPECIFICATIONS

MACH. NO. 4075 LIFT CRANE X DRAGLINE _____ CLAMSHELL _____ SHOVEL _____ HOE _____
 S.O. NO. _____ DATE ISSUED May 17, 1963 DATE SHIPPED Aug. 6, 1963
 SHIP TO Chicago, ILLINOIS
 DISTRIBUTOR DEPCO EQUIPMENT COMPANY
 BUYER MC NALLY & NIMMERGOOD INC.
 PURCHASE ORDER NO. 8461 ROUTE Best
 EXPORT YES NO X PAINTING Standard
 LETTERING

MACHINE DATA-BASIC

ENGINE DRIVE SPROCKET 24499 - 24T. 24500 - 24T.
 DRIVEN SPROCKET 32673 - 146T. 32541 - 146T.
 TRANSMISSION 1" pitch 4 strand 196 pitches - 1" pitch 3 strand 258 P.
 CRAWLER SHOE 40246 - 48"
 CRAWLER DRIVE CHAIN Jeffrey 1605 AAA
 CRAWLER END BLOCK

SHOVEL SPROCKET WEDGE WEDGE
 RIGHT DRUM LAGGING
 LEFT DRUM LAGGING 31082 - 21" dia. No Groove
 CONTROL AIR X on Swing Clutches MANUAL X
 COUNTERWEIGHT 42963 - Box 3,500# Fill 36,600# Total 40,100# } TOTAL
 42523 - Box 2,820# Fill 33,000# Total 35,820# } COUNTERWEIGHT
 42528 - Box 2,423# Fill 26,055# Total 28,478# } 104398#

CRANE & DRAGLINE DATA BOOM TYPE NO. 17 PENDANTS
 BOOM BASE 50304 - 26 Ft. 2- 276707 - 24 Ft. 6 in.
 BOOM UPPER END 50303 - 34 Ft. 62- 276708 - 10 Ft.
 BOOM INSERT 4-32693-2 - 20 Ft. No lugs. 42- 276709 - 20 Ft.
 BOOM INSERT 32692-9 - 10 Ft. with Eq. lug. 8- 276710 - 30 Ft.
 BOOM INSERT 32695-2 - 30 Ft. with Jib Back Stay lug.
 BOOM INSERT 3-32694-2 - 30 Ft. without lugs.
 GANTRY YES X NO (32684) BOOM LENGTH 210 Ft.

FURNISH OPERATING LINES FOR 210 Ft. BOOM AND 50 Ft. JIB.
 RIGHT DRUM CABLE 980 Ft. 1-1/8" 6 x 25 RL, IWRC Imp Plow Steel
 LEFT DRUM CABLE 545 Ft. 1-1/8" 6 x 25 RL, IWRC Imp Plow Steel
 BOOM HOIST CABLE 450 Ft. 1" 6 x 27 Type FS, LL, IWRC Imp Plow Steel
 JIB BACK STAY CABLE 2- 78 Ft. ea. 7/8" 6 x 25 Imp Plow Steel IWRC
 BOOM BRIDLE CABLE
 SHOVEL HOIST CABLE
 SHOVEL TRIP CABLE
 SHOVEL BOOM HOIST CABLE

SHOVEL DATA

BOOM STICK CROWD CHAINS
 DIPPER SIZE SERIAL NO. TYPE DIPPER
 RETRACT CHAINS DIPPER DOOR

POWER PLANT DATA

FAN _____ SUCTION X BLOWER X
 ENGINE CUMMINS NHRS-6-I SERIAL NO. 304879
 TORQUE CONVERTER YES X NO _____
 GOVERNOR CONTROL YES X NO _____
 ELECTRIC STARTING YES X NO _____
 GOVERNED SPEED LOW IDLE _____ O.S. GOV. SPEED _____ HIGH IDLE _____ STALL _____
 R.P.M.

CAPACITY CHART DRWG. NO. 5074 2-23-67
 CAPACITY CHART NO. 4784 6-19-63
 CAPACITY PLATE RENTAL PLATE
 SPECIALS

MANITOWOC ENGINEERING CO.

A Division of The Manitowoc Company, Inc.

Manitowoc Wisconsin

LIFTING CAPACITIES - 4000

BOOM NO. 17 - LIFTCRANE

CAPACITIES IN THOUSANDS OF LBS.

RAD. FT.	Boom Length - Ft.															RAD. FT.		
	60	70	80	90	100	110	120	130	140	150	160	170	180	190	200		210	
16	300.0	283.3	259.4	226.0														16
17	269.8	262.6	256.3	226.0														17
18	243.4	243.1	238.8	226.0	197.7													18
19	221.6	221.2	221.1	217.7	197.7	197.7												19
20	203.3	202.9	202.7	202.3	197.7	195.9												20
22	174.4	173.9	173.7	173.2	173.1	172.8	169.5	168.2										22
24	152.4	151.9	151.7	151.2	151.0	150.7	150.3	150.1	141.2									24
26	135.2	134.7	134.5	134.0	133.8	133.5	133.0	132.8	132.4	132.0	113.0							26
28	121.4	120.9	120.6	120.1	119.9	119.6	119.1	118.9	118.5	118.1	113.0	113.0						28
30	110.0	109.5	109.2	108.7	108.5	108.2	107.7	107.4	107.1	106.6	106.3	106.0	105.5	105.2				30
32	100.5	100.0	99.7	99.2	99.0	98.6	98.2	97.9	97.5	97.1	96.8	96.4	95.9	95.6	84.7			32
34	92.4	91.9	91.6	91.1	90.9	90.5	90.0	89.8	89.4	88.9	88.6	88.3	87.8	87.5	84.7	84.7		34
36	85.5	84.9	84.7	84.1	83.9	83.6	83.1	82.8	82.4	82.0	81.6	81.3	80.8	80.5	80.1	79.6		36
38	79.5	78.9	78.6	78.1	77.9	77.5	77.0	76.7	76.4	75.9	75.6	75.2	74.7	74.4	74.0	73.5		38
40	74.2	73.6	73.3	72.8	72.6	72.2	71.7	71.4	71.1	70.6	70.2	69.9	69.4	69.0	68.6	68.2		40
45	63.4	62.9	62.6	62.0	61.8	61.4	60.9	60.6	60.2	59.7	59.4	59.0	58.5	58.2	57.8	57.3		45
50	55.2	54.6	54.4	53.8	53.5	53.2	52.7	52.4	52.0	51.5	51.1	50.8	50.3	49.9	49.5	49.0		50
55	48.8	48.1	47.9	47.3	47.0	46.7	46.1	45.8	45.5	44.9	44.6	44.2	43.7	43.4	43.0	42.5		55
60	43.5	42.9	42.6	42.0	41.8	41.4	40.9	40.6	40.2	39.7	39.3	38.9	38.4	38.1	37.7	37.2		60
65		38.6	38.3	37.7	37.4	37.1	36.5	36.2	35.8	35.3	35.0	34.6	34.1	33.7	33.3	32.8		65
70		34.9	34.6	34.0	33.8	33.4	32.9	32.6	32.2	31.6	31.3	30.9	30.4	30.0	29.6	29.1		70
75			31.5	30.9	30.7	30.3	29.7	29.4	29.1	28.5	28.2	27.8	27.3	26.9	26.5	26.0		75
80			28.9	28.2	28.0	27.6	27.1	26.8	26.4	25.8	25.5	25.1	24.6	24.2	23.8	23.3		80
85				25.9	25.7	25.3	24.7	24.4	24.0	23.5	23.1	22.7	22.2	21.8	21.4	20.9		85
90				23.9	23.6	23.2	22.7	22.4	22.0	21.4	21.1	20.7	20.1	19.8	19.4	18.8		90
95					21.8	21.4	20.8	20.5	20.2	19.6	19.3	18.9	18.3	18.0	17.5	17.0		95
100					20.2	19.8	19.2	18.9	18.5	18.0	17.6	17.2	16.7	16.3	15.9	15.4		100
105						18.3	17.8	17.5	17.1	16.5	16.2	15.8	15.2	14.9	14.4	13.9		105
110							16.4	16.1	15.8	15.2	14.9	14.4	13.9	13.5	13.1	12.6		110
115							15.3	15.0	14.6	14.0	13.7	13.3	12.7	12.3	11.9	11.4		115
120								13.9	13.5	12.9	12.6	12.2	11.6	11.3	10.8	10.3		120
125								12.9	12.5	11.9	11.6	11.2	10.6	10.3	9.8	9.3		125
130									11.6	11.0	10.7	10.2	9.7	9.3	8.9	8.4		130
135									10.7	10.2	9.8	9.4	8.9	8.5	8.1	7.5		135
140										9.4	9.0	8.6	8.1	7.7	7.3	6.8		140
145										8.7	8.3	7.9	7.4	7.0	6.6	6.0		145
150											7.6	7.2	6.7	6.3	5.9	5.4		150
155											7.0	6.6	6.1	5.7	5.3	4.7		155
160												6.0	5.5	5.1	4.7	4.1		160
165												5.2	4.9	4.6	4.1	3.6		165
170													4.4	4.0	3.6	3.1		170
175													3.2	3.6	3.1	2.6		175
180														2.9	2.7	2.1		180
185														1.6	2.2	1.7		185

Capacities in pounds do not exceed 75% of tipping with boom across crawlers and machine on firm level ground. Weight of load block, weight ball, slings, etc., is considered part of the load.

Machine to be equipped with 21'-10" crawlers, 48" treads, 15' gantry, 10 part boom hoist rigging, 1 7/8" pendant bridges. 1st Cwt. - 40,100 lbs; 2nd Cwt. - 35,800 lbs; 3rd Cwt. - 28,500 lbs.

When 30', 40' or 50' of No. 121 jib is attached, deduct 1800 lbs., 2050 lbs., and 2300 lbs. respectively. When 30' or 40' of No. 113 jib is attached, deduct 3000 lbs. and 3450 lbs. respectively.

Maximum boom lengths: 210 ft. without jibs, 200 ft. with jibs.

S/N: 40500

MANITOWOC ENGINEERING CO.

Division of The Manitowoc Company, Inc. Manitowoc, Wisconsin 54220



LIFT CRANE CAPACITIES
BOOM NO. 22 WITH OPEN THROAT TOP
104,400 LB. COUNTERWEIGHT
360 DEGREE RATING

MEETS
ANSI B30.5
REQUIREMENTS

4000W

CAPACITIES FOR VARIOUS BOOM LENGTHS AND OPERATING RADII ARE FOR FREELY SUSPENDED LOADS AND DO NOT EXCEED 75% OF A STATIC TIPPING LOAD. CAPACITIES BASED ON STRUCTURAL COMPETENCE ARE DENOTED BY AN ASTERISK (*).

UPPER BOOM POINT CAPACITY FOR LIFT CRANE SERVICE WITH SINGLE PART WHIP LINE OR COMBINATION OF TWO SINGLE PART LINES IS 28,300 LBS. (20,000 LBS. WHEN REAR AUXILIARY DRUM IS USED). IN ALL CASES, UPPER BOOM POINT CAPACITIES CANNOT EXCEED THOSE LISTED FOR THE MAIN BOOM CAPACITY.

WEIGHT OF UPPER BOOM POINT, JIB, ALL LOAD BLOCKS, HOOKS, WEIGHT BALL, SLINGS, HOIST LINES, ETC., BENEATH BOOM AND JIB POINT SHEAVES, IS CONSIDERED PART OF THE MAIN BOOM LOAD. BOOM IS NOT TO BE LOWERED BEYOND RADII WHERE COMBINED WEIGHTS ARE GREATER THAN RATED CAPACITY. WHERE NO CAPACITY IS SHOWN, OPERATION IS NOT INTENDED OR APPROVED.

MACHINE TO OPERATE IN A LEVEL POSITION ON A FIRM UNIFORMLY SUPPORTING SURFACE WITH GANTRY UP. REFER TO BOOM RIGGING NO. 48168 AND WIRE ROPE SPECIFICATION CHART NO. 6664-A. CRANE OPERATOR JUDGMENT MUST BE USED TO ALLOW FOR DYNAMIC LOAD EFFECTS OF SWINGING, HOISTING OR LOWERING, TRAVEL, WIND CONDITIONS, AS WELL AS ADVERSE OPERATING CONDITIONS AND PHYSICAL MACHINE DEPRECIATION.

OPERATING RADIUS IS THE HORIZONTAL DISTANCE FROM THE AXIS OF ROTATION TO THE CENTER OF VERTICAL HOIST LINE OR LOAD BLOCK. BOOM ANGLE IS THE ANGLE BETWEEN HORIZONTAL AND CENTERLINE OF BOOM BUTT AND INSERTS, AND IS AN INDICATION OF OPERATING RADIUS. IN ALL CASES, OPERATING RADIUS SHALL GOVERN CAPACITY. BOOM POINT ELEVATION IS VERTICAL DISTANCE FROM GROUND LEVEL TO CENTERLINE OF BOOM POINT SHAFT.

MACHINE EQUIPPED WITH 24' EXTENDIBLE CRAWLERS, 48" TREADS, 15' RETRACTABLE GANTRY, 12 PART BOOM HOIST REEVING, FOUR 1-3/8" BOOM PENDANTS, 1ST COUNTERWEIGHT = 40,100 LBS. (39,000 LBS. WITH COUNTERWEIGHT ASSEMBLY NO. 48998), 2ND COUNTERWEIGHT = 35,800 LBS., AND 3RD COUNTERWEIGHT = 28,500 LBS.

MAXIMUM BOOM AND JIB LENGTHS LIFTED UNASSISTED					
OVER END OF BLOCKED CRAWLERS		OVER SIDE OF EXTENDED CRAWLERS		OVER SIDE OF RETRACTED CRAWLERS	
BOOM LGTH.	JIB NO. 123	BOOM LGTH.	JIB NO. 123	BOOM LGTH.	JIB NO. 123
220'	---	200'	---	190'	---
210'	---	190'	---	180'	---
200'	40'	180'	50'	170'	50'
190'	60'	170'	60'	160'	60'

LOAD BLOCK, HOOK AND WEIGHT BALL ON GROUND AT START. UPPER BOOM POINT CANNOT BE USED ON 220' BOOM.

DEDUCT FROM CAPACITIES WHEN UPPER BOOM POINT IS ATTACHED		DEDUCT FROM CAPACITIES WHEN JIB IS ATTACHED	
		JIB LGTH.	JIB NO. 123
ONE SHEAVE POINT	1,200 LBS.	30'	3,000 LBS.
TWO SHEAVE POINT	1,500 LBS.	40'	3,600 LBS.
		50'	4,200 LBS.
		60'	4,900 LBS.

JIB DEDUCTS INCLUDE JIB ADAPTOR.

CONSULT JIB CHART FOR JIB CAPACITIES.

BOOM LGTH. FEET	OPER. RAD. FEET	BOOM ANG. DEG.	BOOM POINT ELEV. FEET	CAPACITY CRAWLERS RETRACTED POUNDS	CAPACITY CRAWLERS EXTENDED POUNDS	BOOM LGTH. FEET	OPER. RAD. FEET	BOOM ANG. DEG.	BOOM POINT ELEV. FEET	CAPACITY CRAWLERS RETRACTED POUNDS	CAPACITY CRAWLERS EXTENDED POUNDS
70	15	80.7	76.2	350,000*	350,000*	80	16	81.1	86.1	308,300	311,000*
	16	79.9	76.0	308,600	332,800*		17	80.4	86.0	274,700	306,300*
	17	79.0	75.8	275,000	307,800*		18	79.7	85.8	247,600	283,800*
	18	78.2	75.6	248,000	285,200*		19	78.9	85.6	225,200	268,800*
	19	77.3	75.4	225,600	270,100*		20	78.2	85.4	206,500	252,600*
	20	76.5	75.2	206,900	253,500*		22	76.8	85.0	176,800	213,600
	22	74.8	74.7	177,200	214,000		24	75.3	84.5	154,300	184,400
	24	73.1	74.1	154,800	184,800		26	73.8	83.9	136,700	162,100
	26	71.4	73.4	137,200	162,500		28	72.3	83.3	122,500	144,300
	28	69.7	72.7	123,100	144,800		30	70.8	82.6	110,900	130,000
	30	67.9	72.0	111,500	130,500		32	69.3	81.9	101,200	118,100
	32	66.1	71.1	101,700	118,600		34	67.7	81.1	93,000	108,100
	34	64.3	70.2	93,500	108,600		36	66.2	80.3	85,900	99,600
	36	62.5	69.2	86,400	100,100		38	64.6	79.4	79,700	92,200
	38	60.6	68.1	80,300	92,700		40	63.0	78.4	74,300	85,800
	40	58.7	66.9	74,900	85,300		45	58.9	75.6	63,400	72,900
	45	53.8	63.6	63,900	73,400		50	54.6	72.3	55,000	63,100
	50	48.6	59.6	55,600	63,700		55	50.1	68.5	48,400	55,400
	55	42.8	54.7	49,000	56,000		60	45.2	63.9	43,000	49,200
	60	36.4	48.7	43,600	49,800		65	39.9	58.5	38,600	44,200
65	28.8	40.8	39,200	44,800	70	34.0	51.8	34,900	39,900		
70	18.6	29.5	35,500	40,500	75	28.9	43.3	31,700	36,300		
					80	17.4	31.0	29,000	33,200		

S/N: 40500

MANITOWOC ENGINEERING CO.

Division of The Manitowoc Company, Inc. Manitowoc, Wisconsin 54220



LIFT CRANE CAPACITIES

**BOOM NO. 22 WITH OPEN THROAT TOP
104,400 LB. COUNTERWEIGHT
360 DEGREE RATING**

MEETS
ANSI B30.5
REQUIREMENTS

4000W

BOOM LGTH. FEET	OPER. RAD. FEET	BOOM ANG. DEG.	BOOM POINT ELEV. FEET	CAPACITY CRAWLERS	
				RETRACTED POUNDS	EXTENDED POUNDS
190	32	81.4	195.0	96,900	114,100
	34	80.8	194.7	88,500	104,000
	36	80.2	194.3	81,400	95,400
	38	79.6	194.0	75,200	88,000
	40	79.0	193.6	69,700	81,500
	45	77.4	192.6	58,700	68,400
	50	75.9	191.4	50,200	58,500
	55	74.3	190.0	43,600	50,800
	60	72.8	188.6	38,200	44,600
	65	71.2	186.9	33,700	39,400
	70	69.6	185.1	30,000	35,100
	75	67.9	183.2	26,800	31,500
	80	66.3	181.1	24,000	28,400
	85	64.7	178.8	21,700	25,700
	90	63.0	176.4	19,600	23,300
	95	61.3	173.7	17,700	21,200
	100	59.5	170.9	16,000	19,300
	105	57.8	167.8	14,500	17,600
110	56.0	164.6	13,200	16,100	
115	54.1	161.1	12,000	14,700	
120	52.2	157.3	10,900	13,500	
125	50.3	153.3	9,900	12,400	
130	48.3	149.0	8,900	11,300	
135	46.3	144.4	8,100	10,300	
140	44.1	139.4	7,300	9,500	
145	41.9	134.1	6,500	8,600	
150	39.6	128.3	5,800	7,900	
155	37.2	122.0	5,200	7,200	
160	34.6	115.1	4,600	6,500	
165	31.9	107.5	4,100	5,900	
170	28.9	98.9		5,300	
175	25.6	89.2		4,700	
180	21.9	77.9		4,200	
200	34	81.3	204.8	88,200	95,500*
	36	80.7	204.5	81,000	95,000
	38	80.1	204.1	74,800	87,600
	40	79.5	203.8	69,400	81,100
	45	78.1	202.8	58,300	68,100
	50	76.6	201.7	49,900	58,200
	55	75.1	200.4	43,200	50,400
	60	73.6	199.0	37,800	44,200
	65	72.1	197.5	33,300	39,000
	70	70.6	195.8	29,600	34,800
	75	69.1	194.0	26,400	31,100
	80	67.6	192.0	23,600	28,000
	85	66.0	189.8	21,300	25,300
	90	64.4	187.5	19,200	22,900
	95	62.8	185.0	17,300	20,800
	100	61.2	182.4	15,600	18,900
	105	59.6	179.5	14,100	17,200
	110	57.9	176.5	12,800	15,700
115	56.2	173.3	11,600	14,300	
120	54.4	169.8	10,500	13,100	
125	52.7	166.1	9,400	12,000	
130	50.8	162.2	8,500	10,900	
135	49.0	157.9	7,700	9,900	
140	47.0	153.4	6,900	9,100	
145	45.0	148.6	6,100	8,200	
150	43.0	143.4	5,400	7,500	
155	40.8	137.9	4,800	6,700	
160	38.6	131.8	4,200	6,100	
165	36.2	125.3		5,500	
170	33.7	118.2		4,900	
175	31.1	110.3		4,300	
210	36	81.1	214.6	80,600	94,600
	38	80.6	214.3	74,400	87,200
	40	80.0	213.9	68,900	80,700
	45	78.6	213.0	57,900	67,600
	50	77.3	211.9	49,400	57,700
	55	75.9	210.7	42,700	50,000
	60	74.4	209.4	37,300	43,700
	65	73.0	207.9	32,900	38,600
	70	71.6	206.4	29,100	34,300
	75	70.1	204.6	25,900	30,700
	80	68.7	202.7	23,200	27,500
	85	67.2	200.7	20,800	24,800
	90	65.7	198.5	18,700	22,400
	95	64.2	196.2	16,800	20,300
	100	62.7	193.7	15,200	18,500
	105	61.1	191.0	13,700	16,800
	110	59.6	188.2	12,300	15,300
	115	58.0	185.2	11,100	13,900
120	56.4	181.9	10,000	12,600	
125	54.7	178.5	9,000	11,500	
130	53.0	174.9	8,000	10,400	
135	51.3	171.0	7,200	9,500	
140	49.5	166.8	6,400	8,600	
145	47.7	162.4	5,700	7,800	
150	45.8	157.7	5,000	7,000	
155	43.9	152.7	4,300	6,300	
160	41.9	147.3		5,600	
165	39.8	141.5		5,000	
170	37.6	135.3		4,400	
220	38	81.0	224.4	73,900	86,800
	40	80.5	224.1	68,500	80,300
	45	79.2	223.2	57,400	67,200
	50	77.8	222.2	48,900	57,300
	55	76.5	221.0	42,200	49,500
	60	75.2	219.8	36,800	43,200
	65	73.8	218.4	32,400	38,100
	70	72.5	216.9	28,600	33,800
	75	71.1	215.2	25,400	30,200
	80	69.7	213.4	22,700	27,000
	85	68.3	211.5	20,300	24,300
	90	66.9	209.5	18,200	21,900
	95	65.5	207.2	16,300	19,800
	100	64.0	204.9	14,600	17,900
	105	62.5	202.4	13,100	16,200
	110	61.1	199.7	11,600	14,700
	115	59.6	196.9	10,600	13,300
	120	58.1	193.8	9,500	12,100
125	56.5	190.6	8,400	11,000	
130	55.0	187.2	7,500	9,900	
135	53.3	183.6	6,600	8,900	
140	51.7	179.8	5,800	8,000	
145	50.0	175.7	5,100	7,200	
150	48.3	171.4	4,400	6,500	
155	46.5	166.8		5,700	
160	44.7	161.9		5,100	
165	42.8	156.7		4,400	

S/N: 40500

MANITOWOC 4000W - 24' CRAWLERS EXTENDED

LIFECRANE CAPACITIES - 104,400# CMT.

BOOM #22 WITH OPEN THROAT TOP

CRAWLER MACHINE ON BARGE - 0 DEGREE MACHINE LIST

RAD. IN FT.	CAPACITIES IN THOUSANDS OF LBS.													
	70	80	90	100	110	120	130	140	150	160	170	180	190	
1	200.0*	254.0*	267.1*	243.0*	215.2*	186.9*	157.0*	126.0	103.5	81.0	62.4	48.0	37.0	28.0
2	200.0*	254.0*	267.1*	243.0*	215.2*	186.9*	157.0*	126.0	103.5	81.0	62.4	48.0	37.0	28.0
3	200.0*	254.0*	267.1*	243.0*	215.2*	186.9*	157.0*	126.0	103.5	81.0	62.4	48.0	37.0	28.0
4	200.0*	254.0*	267.1*	243.0*	215.2*	186.9*	157.0*	126.0	103.5	81.0	62.4	48.0	37.0	28.0
5	200.0*	254.0*	267.1*	243.0*	215.2*	186.9*	157.0*	126.0	103.5	81.0	62.4	48.0	37.0	28.0
6	200.0*	254.0*	267.1*	243.0*	215.2*	186.9*	157.0*	126.0	103.5	81.0	62.4	48.0	37.0	28.0
7	200.0*	254.0*	267.1*	243.0*	215.2*	186.9*	157.0*	126.0	103.5	81.0	62.4	48.0	37.0	28.0
8	200.0*	254.0*	267.1*	243.0*	215.2*	186.9*	157.0*	126.0	103.5	81.0	62.4	48.0	37.0	28.0
9	200.0*	254.0*	267.1*	243.0*	215.2*	186.9*	157.0*	126.0	103.5	81.0	62.4	48.0	37.0	28.0
10	200.0*	254.0*	267.1*	243.0*	215.2*	186.9*	157.0*	126.0	103.5	81.0	62.4	48.0	37.0	28.0
11	200.0*	254.0*	267.1*	243.0*	215.2*	186.9*	157.0*	126.0	103.5	81.0	62.4	48.0	37.0	28.0
12	200.0*	254.0*	267.1*	243.0*	215.2*	186.9*	157.0*	126.0	103.5	81.0	62.4	48.0	37.0	28.0
13	200.0*	254.0*	267.1*	243.0*	215.2*	186.9*	157.0*	126.0	103.5	81.0	62.4	48.0	37.0	28.0
14	200.0*	254.0*	267.1*	243.0*	215.2*	186.9*	157.0*	126.0	103.5	81.0	62.4	48.0	37.0	28.0
15	200.0*	254.0*	267.1*	243.0*	215.2*	186.9*	157.0*	126.0	103.5	81.0	62.4	48.0	37.0	28.0

CAPACITIES ARE FOR A CRAWLER MACHINE WHEN OPERATING ON A BARGE. MACHINE SHALL BE POSITIVELY SECURED TO PREVENT SHIFTING, TIPPING OR LOAD. CAPACITIES BASED ON STRUCTURAL COMPETENCE ARE DENOTED BY AN ASTERISK (*).
 WEIGHT OF ALL LOAD BLOCKS, HOOKS, WEIGHT BALLS, SLINGS, HOIST LINES BENEATH BOOM POINT SHEAVES, ETC. IS CONSIDERED PART OF THE MAIN BOOM LOAD. DEDUCT 1,200# FROM ABOVE CAPACITIES WHEN SINGLE SHEAVE UPPER BOOM POINT IS ATTACHED AND 1,500# WHEN TWO SHEAVES UPPER BOOM POINT IS AT A CHORD. BOOM IS NOT TO BE LOWERED BEYOND RADI WHERE COMBINED WEIGHTS ARE GREATER THAN RATED CAPACITY. WHERE NO CAPACITY IS SHOWN, OPERATION IS NOT INTENDED OR APPROVED.
 REFER TO RIGGING #48168 LOAD LINE SPECIFICATION CHART #5320 AND RANGE CHART #5359. CRANE OPERATOR JUDGMENT MUST BE USED TO ALLOW FOR DYNAMIC LOAD EFFECTS OF SWINGING, HOISTING OR LOWERING, AS WELL AS ADVERSE OPERATING CONDITIONS AND PHYSICAL MACHINE DEPRECIATION.
 OPERATING RADIUS IS THE HORIZONTAL DISTANCE FROM THE AXIS OF ROTATION AT BARGE DECK TO THE CENTER OF VERTICAL HOIST LINE OR LOAD BLOCK.
 MACHINE EQUIPPED WITH 24' EXTENSIBLE CRAWLERS, 48 IN. TREADS, 15' RETRACTABLE GANTRY, 12 PART BOOM HOIST REEVING, FOUR 1-3/8 IN. BOOM PENDANTS, 1ST CMT. = 40,100#, 2ND CMT. = 35,800#, 3RD CMT. = 28,500#.

DJK
 04/27/77 Rev. 8/1/78
 DRG# #6909-A

MANITOWOC ENGINEERING CO.
 MANITOWOC, WISCONSIN

MANITOWOC 4000W -- 24' CRAWLERS EXTENDED
 LIFT CRANE CAPACITIES -- 104,400# CWT.
 BOOM #22 WITH OPEN THROAT TOP
 CRAWLER MACHINE ON BARGE -- 3 DEGREE MACHINE LIST

RAD. IN FT.	CAPACITIES IN THOUSANDS OF LBS.										RAD. IN FT.			
	70	80	90	100	110	120	130	140	150	160		170	180	190
10	184.6	168.0	153.0	138.0	124.0	110.0	96.0	82.0	68.0	54.0	40.0	26.0	12.0	0.0
15	175.5	160.0	145.0	130.0	116.0	102.0	88.0	74.0	60.0	46.0	32.0	18.0	4.0	0.0
20	166.4	152.0	137.0	122.0	108.0	94.0	80.0	66.0	52.0	38.0	24.0	10.0	0.0	0.0
25	157.3	144.0	129.0	114.0	100.0	86.0	72.0	58.0	44.0	30.0	16.0	2.0	0.0	0.0
30	148.2	136.0	121.0	106.0	92.0	78.0	64.0	50.0	36.0	22.0	8.0	0.0	0.0	0.0
35	139.1	128.0	113.0	98.0	84.0	70.0	56.0	42.0	28.0	14.0	0.0	0.0	0.0	0.0
40	130.0	120.0	105.0	90.0	76.0	62.0	48.0	34.0	20.0	6.0	0.0	0.0	0.0	0.0
45	121.0	112.0	97.0	82.0	68.0	54.0	40.0	26.0	12.0	0.0	0.0	0.0	0.0	0.0
50	112.0	104.0	89.0	74.0	60.0	46.0	32.0	18.0	4.0	0.0	0.0	0.0	0.0	0.0
55	103.0	96.0	81.0	66.0	52.0	38.0	24.0	10.0	0.0	0.0	0.0	0.0	0.0	0.0
60	94.0	88.0	73.0	58.0	44.0	30.0	16.0	2.0	0.0	0.0	0.0	0.0	0.0	0.0
65	85.0	80.0	65.0	50.0	36.0	22.0	8.0	0.0	0.0	0.0	0.0	0.0	0.0	0.0
70	76.0	72.0	57.0	42.0	28.0	14.0	0.0	0.0	0.0	0.0	0.0	0.0	0.0	0.0
75	67.0	64.0	49.0	34.0	20.0	6.0	0.0	0.0	0.0	0.0	0.0	0.0	0.0	0.0
80	58.0	56.0	41.0	26.0	12.0	0.0	0.0	0.0	0.0	0.0	0.0	0.0	0.0	0.0
85	49.0	48.0	33.0	18.0	8.0	0.0	0.0	0.0	0.0	0.0	0.0	0.0	0.0	0.0
90	40.0	40.0	25.0	10.0	4.0	0.0	0.0	0.0	0.0	0.0	0.0	0.0	0.0	0.0
95	31.0	32.0	17.0	6.0	0.0	0.0	0.0	0.0	0.0	0.0	0.0	0.0	0.0	0.0
100	22.0	24.0	9.0	2.0	0.0	0.0	0.0	0.0	0.0	0.0	0.0	0.0	0.0	0.0
105	13.0	16.0	5.0	0.0	0.0	0.0	0.0	0.0	0.0	0.0	0.0	0.0	0.0	0.0
110	4.0	6.0	1.0	0.0	0.0	0.0	0.0	0.0	0.0	0.0	0.0	0.0	0.0	0.0
115	0.0	2.0	0.0	0.0	0.0	0.0	0.0	0.0	0.0	0.0	0.0	0.0	0.0	0.0
120	0.0	0.0	0.0	0.0	0.0	0.0	0.0	0.0	0.0	0.0	0.0	0.0	0.0	0.0
125	0.0	0.0	0.0	0.0	0.0	0.0	0.0	0.0	0.0	0.0	0.0	0.0	0.0	0.0
130	0.0	0.0	0.0	0.0	0.0	0.0	0.0	0.0	0.0	0.0	0.0	0.0	0.0	0.0
135	0.0	0.0	0.0	0.0	0.0	0.0	0.0	0.0	0.0	0.0	0.0	0.0	0.0	0.0
140	0.0	0.0	0.0	0.0	0.0	0.0	0.0	0.0	0.0	0.0	0.0	0.0	0.0	0.0
145	0.0	0.0	0.0	0.0	0.0	0.0	0.0	0.0	0.0	0.0	0.0	0.0	0.0	0.0
150	0.0	0.0	0.0	0.0	0.0	0.0	0.0	0.0	0.0	0.0	0.0	0.0	0.0	0.0
155	0.0	0.0	0.0	0.0	0.0	0.0	0.0	0.0	0.0	0.0	0.0	0.0	0.0	0.0

CAPACITIES ARE FOR A CRAWLER MACHINE WHEN OPERATING ON A BARGE. MACHINE SHALL BE POSITIVELY SECURED TO PREVENT SHIFTING, TIPPING OR DEPRECIATION. CAPACITIES BASED ON STRUCTURAL COMPETENCE ARE DENOTED BY AN ASTERISK (*).
 WEIGHT OF ALL LOAD BLOCKS, HOOKS, WEIGHT BALLS, SLINGS, HOIST LINES BENEATH BOOM POINT SHEAVES, ETC. IS CONSIDERED PART OF THE MAIN BOOM LOAD. DEDUCT 1,200# FROM ABOVE CAPACITIES WHEN SINGLE SHEAVE UPPER BOOM POINT IS ATTACHED AND 1,500# WHEN TWO SHEAVE UPPER BOOM POINT IS SHOWN. BOOM IS NOT TO BE LOWERED BEYOND RADIUS WHERE COMBINED WEIGHTS ARE GREATER THAN RATED CAPACITY. WHERE NO CAPACITY IS SHOWN, OPERATION IS NOT INTENDED OR APPROVED.
 REFER TO RIGGING #48168, LOAD LINE SPECIFICATION CHART #5320, AND RANGE CHART #5359. CRANE OPERATOR JUDGMENT MUST BE USED TO ALLOW FOR DYNAMIC LOAD EFFECTS OF SWINGING, HOISTING OR LOWERING, AS WELL AS ADVERSE OPERATING CONDITIONS AND PHYSICAL MACHINE DEPRECIATION.
 OPERATING RADIUS IS THE HORIZONTAL DISTANCE FROM THE AXIS OF ROTATION AT BARGE DECK TO THE CENTER OF VERTICAL HOIST LINE OR LOAD BLOCK.
 MACHINE EQUIPPED WITH 24' EXTENDIBLE CRAWLERS, 48 IN. TREADS, 15' RETRACTABLE GANTRY, 12 PART BOOM HOIST REEVING, FOUR 1-3/8 IN. BOOM PENDANTS, 1ST CWT. = 40,100#, 2ND CWT. = 35,800#, 3RD CWT. = 28,500#.

S/N: 40500

MANITOWOC ENGINEERING CO.
 MANITOWOC, WISCONSIN

04/27/77, Rev. 8/1/78
 DRWG. #6909-C

MANITOWOC ENGINEERING CO.

(A division of The Manitowoc Company, Inc.)

Manitowoc, Wisconsin 54220

S/N 40212-



LIFTCRANE CAPACITIES — 4000W BOOM NO. 22 WITH OPEN THROAT TOP, CONT'D.

SEE CONDITIONS ON FRONT PAGE

Boom Lgh.: Feet	Oper. Rad.: Feet	Bo. Ang.: Deg.	Boom Point: Elev.	Capacity: Crawlers Retracted	Capacity: Crawlers Extended
36	81.1		214.6	80,600	94,600
38	80.6		214.3	74,400	87,200
40	80.0		213.9	68,900	80,700
45	78.6		213.0	57,900	67,600
50	77.3		211.9	49,400	57,700
55	75.9		210.7	42,700	50,000
60	74.4		209.4	37,300	43,700
65	73.0		207.9	32,900	38,600
70	71.6		206.4	29,100	34,300
75	70.1		204.6	25,900	30,700
80	68.7		202.7	23,200	27,500
85	67.2		200.7	20,800	24,900
90	65.7		198.5	18,700	22,400
95	64.2		196.2	16,800	20,300
100	62.7		193.7	15,200	18,500
105	61.1		191.0	13,700	16,800
110	59.6		188.2	12,300	15,300
115	58.0		185.2	11,100	13,900
120	56.4		181.9	10,000	12,600
125	54.7		178.5	9,000	11,500
130	53.0		174.9	8,000	10,400
135	51.3		171.0	7,200	9,500
140	49.5		166.8	6,400	8,600
145	47.7		162.4	5,700	7,800
150	45.8		157.7	5,000	7,000
155	43.9		152.7	4,300	6,300
160	41.9		147.3		5,600
165	39.8		141.5		5,000
170	37.6		135.3		4,400
38	81.0		224.4	73,900	86,800
40	80.5		224.1	68,500	80,300
45	79.2		223.2	57,400	67,200
50	77.8		222.2	48,900	57,300
55	76.5		221.0	42,200	49,500
60	75.2		219.8	36,800	43,200
65	73.8		218.4	32,400	38,100
70	72.5		216.9	28,600	33,800
75	71.1		215.2	25,400	30,200
80	69.7		213.4	22,700	27,000
85	68.3		211.5	20,300	24,300
90	66.9		209.5	18,200	21,900
95	65.5		207.2	16,300	19,800
100	64.0		204.9	14,600	17,900
105	62.6		202.4	13,100	16,200
110	61.1		199.7	11,800	14,700
115	59.6		196.9	10,600	13,300
120	58.1		193.8	9,500	12,100
125	56.5		190.6	8,400	11,000
130	55.0		187.2	7,500	9,900
135	53.3		183.6	6,600	8,900
140	51.7		179.8	5,800	8,000
145	50.0		175.7	5,100	7,200
150	48.3		171.4	4,400	6,500
155	46.5		166.8		5,700
160	44.7		161.9		5,100
165	42.8		156.7		4,400

Combined From Char
 No. 5225 1-24-;
 No. 5226 1-24-;
 No. 5359 7-20-;
 No. 5320 7-20-;

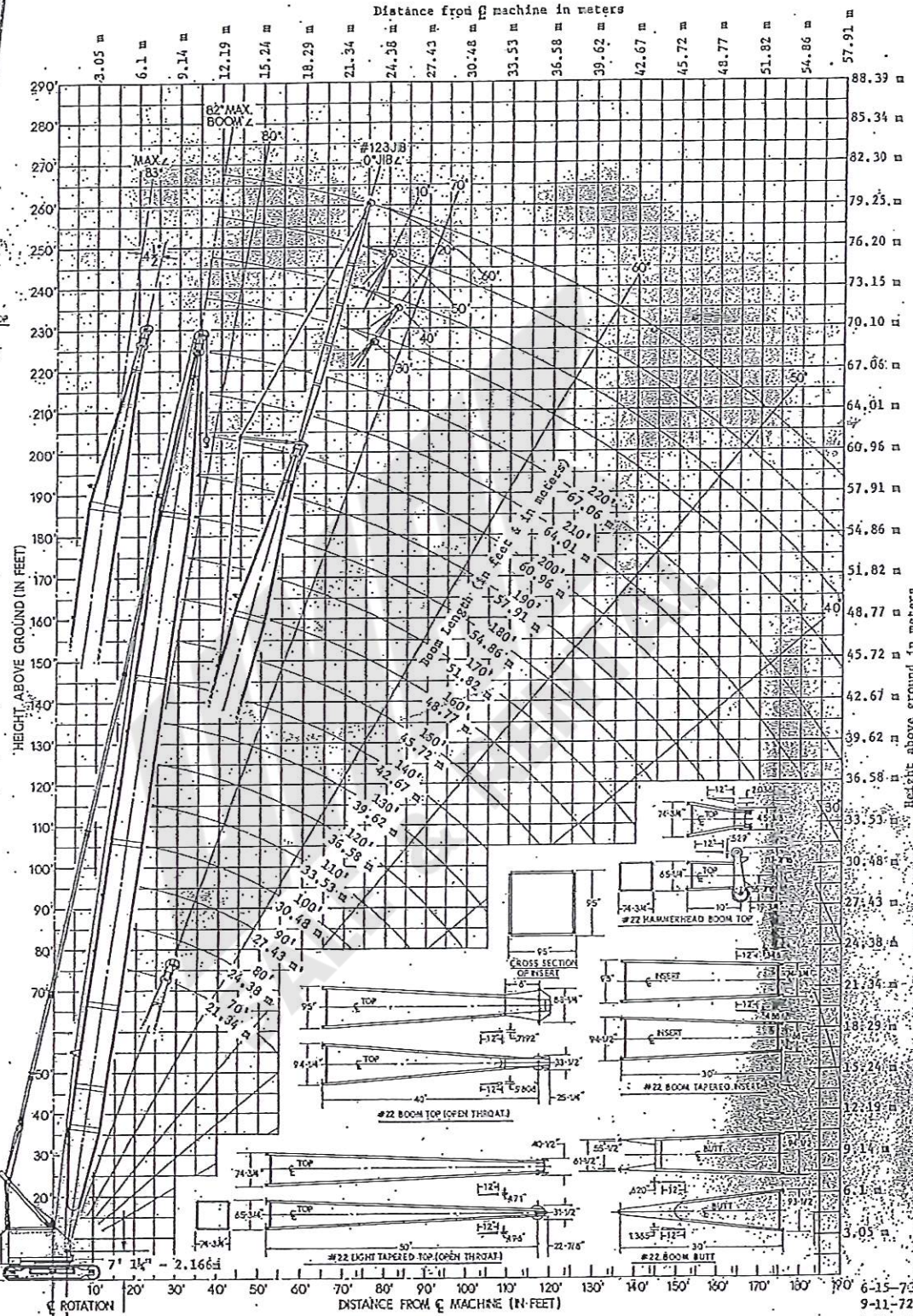
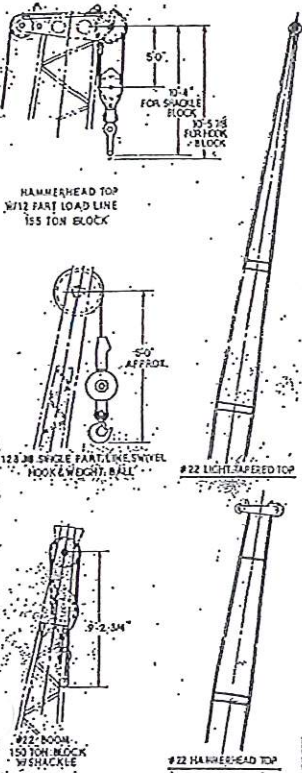
S/N 140212

MANITOWOC ENGINEERING CO.

Division of The Manitowoc Company, Inc.

Manitowoc, Wisconsin

MAXIMUM BOOM ANGLE
 82° For No. 22 Boom W/Straight Top
 83° For No. 22 Boom W/45° Offset Top
 83° For No. 22 Boom W/Hammerhead Top



NOTE 1: This drawing is intended only as a guide to assist in job planning.

NOTE 2: For planning a lift, this drawing is to be used in conjunction with appropriate A-Capacity Charts, C-Load Line Specifications, E-Outline Dimensions, F-Range Charts, D-Rigging Drawings.

NOTE 3: For planning lifts where clearances are limited and accuracy is desired, a detailed layout should be prepared.

NOTE 4: Distance of MANITOWOC load block to boom point based on 3° fleet angle or physical limitations.

NOTE 5: When equipped with hoist line limit switch, contact factory for load block to boom point minimum distance.

RANGE DIAGRAM - M4000W - No. 22-BOOM W/ No. 123 JIB And OFFSET TOP

DO NOT SCALE THIS DRAWING

Larger Size Diagrams Available - Contact Dealer.

48955

S/N: 40212

JMOC 4000W - 24' CRAWLERS EXTENDED
 LIFT CRANE CAPACITIES - 104,400# CWT.
 BCOM #22 WITH OPEN THROAT TOP
 CRAWLER MACHINE ON BARGE - 0 DEGREE MACHINE LIST

AD. N.	CAPACITIES IN THOUSANDS OF LBS.												RAD. IN. FT.	
	70	80	90	100	110	120	130	140	150	160	170	180		190
1	300.0*	297.0*	267.1*	243.0*	215.9*	186.8*	157.0*	140.5	157.0*	139.7	123.2	112.4	102.3	95.3*
2	287.0*	281.9*	262.0*	240.0*	211.2*	181.5*	154.0	138.0	154.0	129.0	113.0	102.4	92.3	85.3*
3	279.3*	275.5*	256.0*	235.1*	207.1*	177.5*	150.0	134.0	150.0	125.0	109.0	98.4	88.3	81.3*
4	212.3*	212.0	211.9	211.2	211.1	211.0	211.0	211.0	211.0	211.0	211.0	211.0	211.0	211.0
5	183.0	180.5	178.0	175.5	173.0	170.5	168.0	165.5	163.0	160.5	158.0	155.5	153.0	150.5
6	143.0	142.5	142.0	141.5	141.0	140.5	140.0	139.5	139.0	138.5	138.0	137.5	137.0	136.5
7	116.0	116.0	116.0	116.0	116.0	116.0	116.0	116.0	116.0	116.0	116.0	116.0	116.0	116.0
8	106.0	106.0	106.0	106.0	106.0	106.0	106.0	106.0	106.0	106.0	106.0	106.0	106.0	106.0
9	94.0	94.0	94.0	94.0	94.0	94.0	94.0	94.0	94.0	94.0	94.0	94.0	94.0	94.0
10	71.0	71.0	71.0	71.0	71.0	71.0	71.0	71.0	71.0	71.0	71.0	71.0	71.0	71.0
11	54.0	54.0	54.0	54.0	54.0	54.0	54.0	54.0	54.0	54.0	54.0	54.0	54.0	54.0
12	43.0	43.0	43.0	43.0	43.0	43.0	43.0	43.0	43.0	43.0	43.0	43.0	43.0	43.0
13	35.0	35.0	35.0	35.0	35.0	35.0	35.0	35.0	35.0	35.0	35.0	35.0	35.0	35.0
14	30.0	30.0	30.0	30.0	30.0	30.0	30.0	30.0	30.0	30.0	30.0	30.0	30.0	30.0
15	25.0	25.0	25.0	25.0	25.0	25.0	25.0	25.0	25.0	25.0	25.0	25.0	25.0	25.0
16	20.0	20.0	20.0	20.0	20.0	20.0	20.0	20.0	20.0	20.0	20.0	20.0	20.0	20.0
17	15.0	15.0	15.0	15.0	15.0	15.0	15.0	15.0	15.0	15.0	15.0	15.0	15.0	15.0
18	10.0	10.0	10.0	10.0	10.0	10.0	10.0	10.0	10.0	10.0	10.0	10.0	10.0	10.0
19	5.0	5.0	5.0	5.0	5.0	5.0	5.0	5.0	5.0	5.0	5.0	5.0	5.0	5.0
20	0.0	0.0	0.0	0.0	0.0	0.0	0.0	0.0	0.0	0.0	0.0	0.0	0.0	0.0

CAPACITIES ARE FOR A CRAWLER MACHINE WHEN OPERATING ON A BARGE. MACHINE SHALL BE POSITIVELY SECURED TO PREVENT SHIFTING. CAPACITIES FOR VARIOUS BOOM LENGTHS AND OPERATING RADII ARE FOR FREELY SUSPENDED LOADS AND DO NOT EXCEED 75% OF A STATIC TIPPING LOAD. CAPACITIES BASED ON STRUCTURAL COMPETENCE ARE DENOTED BY AN ASTERISK (*).

HEIGHT OF ALL LOAD BLOCKS, HOOKS, WEIGHT BALLS, SLINGS, HOIST LINES BENEATH BOOM POINT SHEAVES, ETC. IS CONSIDERED PART OF THE MAIN BOOM LOAD. DUCT 1,200# FROM ABOVE CAPACITIES WHEN SINGLE SHEAVE UPPER BOOM POINT IS ATTACHED AND 1,500# WHEN TWO SHEAVE UPPER BOOM POINT IS ATTACHED. BOOM IS NOT TO BE LOWERED BEYOND RADI WHERE COMBINED WEIGHTS ARE GREATER THAN RATED CAPACITY. WHERE NO CAPACITY IS SHOWN, OPERATION IS NOT INTENDED OR APPROVED.

REFER TO RIGGING #48168, LOAD LINE SPECIFICATION CHART #5320 AND RANGE CHART #5359. CRANE OPERATOR JUDGMENT MUST BE USED TO ALLOW FOR DYNAMIC LOAD EFFECTS OF SWINGING, HOISTING OR LOWERING, AS WELL AS ADVERSE OPERATING CONDITIONS AND PHYSICAL MACHINE DEPRECIATION.

OPERATING RADIUS IS THE HORIZONTAL DISTANCE FROM THE AXIS OF ROTATION AT BARGE DECK TO THE CENTER OF VERTICAL HOIST LINE OR LOAD BLOCK.

MACHINE EQUIPPED WITH 24' EXTENDIBLE CRAWLERS, 48 IN. TREADS, 15' RETRACTABLE GANTRY, 12 PART BOOM HOIST REEVING, FOUR 1-3/8 IN. BOOM PENDANTS, 1ST CWT. = 40,100#, 2ND CWT. = 35,800#, 3RD CWT. = 28,500#.

MANITOWOC ENGINEERING CO.
MANITOWOC, WISCONSIN

D/W: 4/16/16

JCC 4000W - 24' CRAWLERS EXTENDED
 LIFT/RAVE CAPACITIES - 104,400# CWT.
 BCCM #22 WITH OPEN THROAT TOP
 CRAWLER MACHINE ON BARGE - 2 DEGREE MACHINE LIST

AD.	CAPACITIES IN THOUSANDS OF LBS.										RAD. IN FT.			
	70	80	90	100	110	120	130	140	150	160		170	180	190
17	230.8*													
18	218.0*													
19	206.5*													
20	196.0	182.8*												
21	170.0	146.5*												
22	150.0	131.7												
23	134.3	118.7												
24	121.3	108.2	120.1											
25	110.2	99.2	108.1	107.0										
26	96.7	89.5	99.3	90.0										
27	80.7	77.5	84.5	77.2										
28	73.4	72.2	78.1	70.6										
29	58.8	54.7	62.5	55.9										
30	44.4	42.5	47.1	44.6										
31	36.5	33.1	37.1	35.3										
32	33.2	30.7	34.1	32.7										
33	29.9	28.0	31.1	29.9										
34	26.6	24.7	27.8	26.6										
35	23.3	21.8	24.9	23.7										
36	20.0	19.4	21.9	20.9										
37	16.7	16.1	18.1	17.1										
38	13.4	12.9	14.9	13.9										
39	10.1	9.6	11.6	10.6										
40	6.8	6.3	8.3	7.3										
41	3.5	3.0	5.0	4.0										
42	0.2	0.1	2.1	1.1										
43														
44														
45														
46														
47														
48														
49														
50														
51														
52														
53														
54														
55														
56														

CAPACITIES ARE FOR A CRAWLER MACHINE WHEN OPERATING ON A BARGE. MACHINE SHALL BE POSITIVELY SECURED TO PREVENT SHIFTING/TIPPING. CAPACITIES FOR VARIOUS BOOM LENGTHS AND OPERATING RADII ARE FOR FREELY SUSPENDED LOADS AND DO NOT EXCEED 75% OF A STATIC TIPPING LOAD. CAPACITIES BASED ON STRUCTURAL COMPETENCE ARE DENOTED BY AN ASTERISK (*).

WEIGHT OF ALL LOAD BLOCKS, HOOKS, WEIGHT BALL, SLINGS, HOIST LINES BENEATH BOOM POINT SHEAVES, ETC. IS CONSIDERED PART OF THE MAIN BOOM LOAD. FROM ABOVE CAPACITIES WHEN SINGLE SHEAVE UPPER BOOM POINT IS ATTACHED AND 1,500# WHEN TWO SHEAVE UPPER BOOM POINT IS ATTACHED. BOOM IS NOT TO BE LOWERED BEYOND RADII WHERE COMBINED WEIGHTS ARE GREATER THAN RATED CAPACITY. WHERE NO CAPACITY IS SHOWN, OPERATION IS NOT INTENDED OR APPROVED.

REFER TO RIGGING #48168; LOAD LINE SPECIFICATION CHART #5320 AND RANGE CHART #5355. CRANE OPERATOR JUDGMENT MUST BE USED TO ALLOW FOR DYNAMIC LOAD EFFECTS OF SWINGING, HOISTING OR LOWERING, AS WELL AS ADVERSE OPERATING CONDITIONS AND PHYSICAL MACHINE DEPRECIATION.

OPERATING RADIUS IS THE HORIZONTAL DISTANCE FROM THE AXIS OF ROTATION AT BARGE DECK TO THE CENTER OF VERTICAL HOIST LINE OR LOAD BLOCK.

MACHINE EQUIPPED WITH 24' EXTENDIBLE CRAWLERS, 48 IN. TREADS, 15' RETRACTABLE GANTRY, 12 PART BOOM HOIST REEVING, FOUR 1-3/8 IN. BOOM PENDANTS, 1ST CWT. = 40,100#, 2ND CWT. = 28,500#.

MANITOWOC ENGINEERING CO.
 MANITOWOC, WISCONSIN

DJK 04/27/77 Rev. 8/1/78
 DRWG. #6509-B

SN: 40212

LOWDC 4000W - 24' CRAWLERS EXTENDED
 LIFT CRANE CAPACITIES - 104,400# CWT.
 BOOM #22 WITH OPEN THROAT TOP
 CRAWLER MACHINE ON BARGE - 3 DEGREE MACHINE LIST

RAD. IN FT.	CAPACITIES IN THOUSANDS OF LBS.										RAD. IN FT.			
	70	80	90	100	110	120	130	140	150	160		170	180	190
190	93.9*													
180	107.6*													
170	117.5													
160	127.4													
150	137.3													
140	147.2													
130	157.1													
120	167.0													
110	176.9	109.2												
100	186.8	94.6	96.9											
90	196.7	80.1	87.1	87.6										
80	206.6	65.6	74.9	79.9	78.4									
70	216.5	51.1	62.4	69.4	63.7	64.5								
60	226.4	36.6	50.9	58.4	51.4	49.9	64.5							
50	236.3	22.1	40.4	47.4	40.4	38.9	54.0	71.1						
40	246.2	7.6	30.9	37.9	30.9	29.4	43.5	50.5	60.0					
30	256.1		21.4	28.4	21.4	20.9	33.0	37.0	43.5	59.0				
20	266.0		11.9	18.9	11.9	11.4	22.5	26.0	26.5	32.5	47.0			
10	275.9		2.4	9.4	2.4	2.4	12.0	16.0	15.5	21.0	28.0	44.0		
0	285.8						2.0	6.0	5.5	11.0	14.0	20.0	37.0	
10	295.7													
20	305.6													
30	315.5													
40	325.4													
50	335.3													
60	345.2													
70	355.1													
80	365.0													
90	374.9													
100	384.8													
110	394.7													
120	404.6													
130	414.5													
140	424.4													
150	434.3													
160	444.2													
170	454.1													
180	464.0													
190	473.9													
200	483.8													

CAPACITIES ARE FOR A CRAWLER MACHINE WHEN OPERATING ON A BARGE. MACHINE SHALL BE POSITIVELY SECURED TO PREVENT SHIFTING. CAPACITIES FOR VARIOUS BOOM LENGTHS AND OPERATING RADII ARE FOR FREELY SUSPENDED LOADS AND DO NOT EXCEED 75% OF A STATIC TIPPING LOAD. CAPACITIES BASED ON STRUCTURAL COMPETENCE ARE DENOTED BY AN ASTERISK (*).

WEIGHT OF ALL LOAD BLOCKS, HOOKS, WEIGHT BALLS, SLINGS, HOIST LINES BENEATH BOOM POINT SHEAVES, ETC. IS CONSIDERED PART OF THE MAIN BOOM LOAD. DEDUCT 1,200# FROM ABOVE CAPACITIES WHEN SINGLE SHEAVE UPPER BOOM POINT IS ATTACHED AND 1,500# WHEN TWO SHEAVE UPPER BOOM POINT IS ATTACHED. BOOM IS NOT TO BE LOWERED BEYOND RADII WHERE COMBINED WEIGHTS ARE GREATER THAN RATED CAPACITY. WHERE NO CAPACITY IS SHOWN, OPERATION IS NOT INTENDED OR APPROVED.

REFER TO RIGGING #48168, LOAD LINE SPECIFICATION CHART #5320 AND RANGE CHART #5359. CRANE OPERATOR JUDGMENT MUST BE USED TO ALLOW FOR DYNAMIC LOAD EFFECTS OF SWINGING, HOISTING OR LOWERING, AS WELL AS ADVERSE OPERATING CONDITIONS AND PHYSICAL MACHINE DEPRECIATION.

OPERATING RADIUS IS THE HORIZONTAL DISTANCE FROM THE AXIS OF ROTATION AT BARGE DECK TO THE CENTER OF VERTICAL HOIST LINE OR LOAD BLOCK.

MACHINE EQUIPPED WITH 24' EXTENDIBLE CRAWLERS, 48 IN. TREADS, 15' RETRACTABLE GANTRY, 12 PART BOOM HOIST REEVING, FOUR 1-3/8 IN. BOOM PENDANTS, 1ST CWT. = 40,100#, 2ND CWT. = 35,800#, 3RD CWT. = 28,500#.

DJK 8/1/78
 04/27/77, REV.
 DRWG. #6909-C

MANITOWOC ENGINEERING CO.
 MANITOWOC, WISCONSIN



CLAMSHELL CAPACITIES 4000W VICON

**BOOM NO. 22 WITH OPEN THROAT TOP
75,900 LB. COUNTERWEIGHT**

LIFTING CAPACITIES: Capacities for various boom lengths and operating radii are for freely suspended loads and do not exceed 67.5% of a static tipping load. Capacities are based on tipping, structural competence, operating speeds and other factors. Capacities based on structural competence are shown by shaded areas.

Capacities are shown in pounds. Weight of bucket is considered part of the load. Where no capacity is shown, operation is not intended or approved.

OPERATING CONDITIONS: Machine is to be operated by controlled converter lowering of the load for capacities above 20,000 lb.

Machine to operate in a level position on a firm surface with gantry up. Refer to rigging drawing No. 48168 and wire rope specification chart No. 5342. Crane operator judgment must be used to allow for adverse operating conditions and physical machine depreciation.

OPERATING RADIUS: Operating radius is the horizontal distance from the axis of rotation to the center of gravity of the freely suspended load. Boom angle is the angle above true horizontal of a line drawn through the boom hinge pin and the upper boom point shaft centerline.

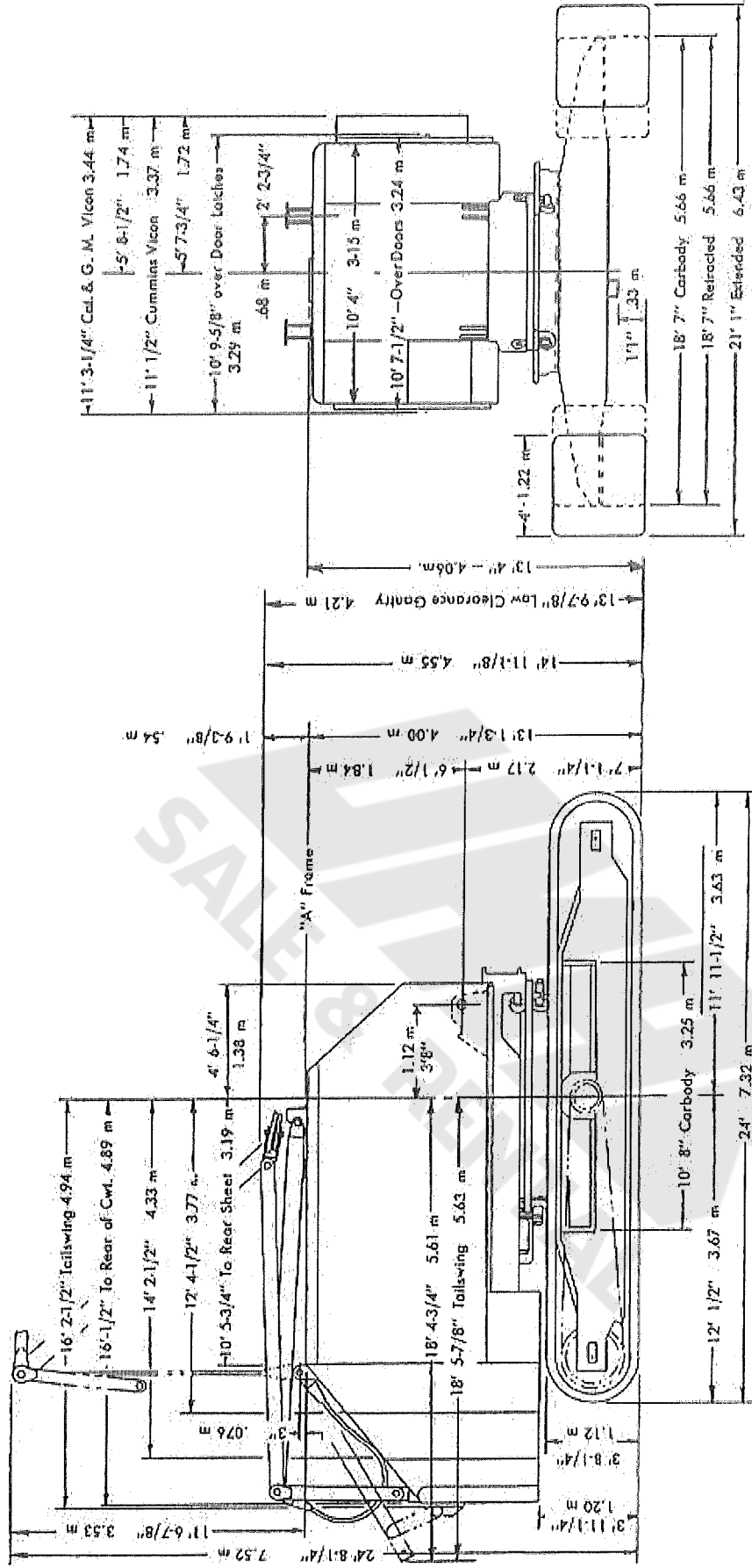
MACHINE EQUIPMENT: Machine equipped with 24' extendible crawlers, 48" treads, 15' retractable gantry, 12 part boom hoist reeving, four 1 1/2" boom pendants, 1st cwt. 40,100 lb., 2nd cwt. 35,800 lb.

Boom Lgth.: Feet	Oper. Rad.: Feet	Boom Angle: Deg.	Capacity: Crawlers Retracted	Capacity: Crawlers Extended	Boom Lgth.: Feet	Oper. Rad.: Feet	Boom Angle: Deg.	Capacity: Crawlers Retracted	Capacity: Crawlers Extended
70	34	66.9	28,000	28,000	100	45	67.3	28,000	28,000
	36	65.2	28,000	28,000		50	64.3	28,000	28,000
	38	63.4	28,000	28,000		55	61.2	28,000	28,000
	40	61.7	28,000	28,000		60	58.0	28,000	28,000
	45	57.2	28,000	28,000		65	54.7	26,600	28,000
	50	52.4	28,000	28,000		70	51.2	23,700	27,900
	55	47.3	28,000	28,000		75	47.6	21,200	25,000
	60	41.8	28,000	28,000		80	43.7	19,100	22,600
	65	35.6	28,000	28,000		85	39.6	17,200	20,500
	70	28.2	25,400	28,000		90	35.0	15,600	18,600
80	38	66.8	28,000	28,000	95	29.8	14,100	16,900	
	40	65.3	28,000	28,000	100	23.7	12,800	15,500	
	45	61.5	28,000	28,000	110	50	66.7	28,000	28,000
	50	57.5	28,000	28,000		55	63.9	28,000	28,000
	55	53.4	28,000	28,000		60	61.1	28,000	28,000
	60	49.0	28,000	28,000		65	58.2	26,200	28,000
	65	44.2	27,700	28,000		70	55.2	23,300	27,500
	70	39.1	24,800	28,000		75	52.0	20,800	24,600
75	33.3	22,300	26,100	80		48.8	18,600	22,200	
80	26.4	20,200	23,700	85		45.3	16,800	20,000	
90	40	68.1	28,000	28,000	120	90	41.7	15,100	18,200
	45	64.8	28,000	28,000		95	37.7	13,700	16,500
	50	61.3	28,000	28,000		100	33.4	12,400	15,000
	55	57.8	28,000	28,000		105	28.5	11,200	13,700
	60	54.1	28,000	28,000		55	66.2	28,000	28,000
	65	50.2	27,200	28,000		60	63.6	28,000	28,000
	70	46.1	24,300	28,000		65	61.0	25,600	28,000
	75	41.7	21,900	25,700		70	58.3	22,700	26,900
	80	36.9	19,700	23,200		75	55.6	20,200	24,100
	85	31.4	17,900	21,100		80	52.7	18,100	21,600
90	25.0	16,200	19,200	85	49.7	16,200	19,500		
				90	46.6	14,500	17,600		
				95	43.3	13,100	15,900		
				100	39.9	11,800	14,500		
				105	36.1	10,600	13,100		
				110	32.0	9,600	11,900		
				115	27.3	8,600	10,600		

MANITOWOC ENGINEERING CO.

A Division of The Manitowoc Company, Inc.

Manitowoc, Wisconsin



3-21-55
2-27-57
7-1-64
Drawg. Data 11-28-63

MANITOWOC 400W - 24' CRAWLERS EXTENDED

LIFT CRANE CAPACITIES - 104,400# CRT.

BOOM #17 WITH OPEN THRUAT TOP

CRAWLER MACHINE ON BARGE - G DEGREE MACHINE LIST

RAD. FT.	CAPACITIES IN THOUSANDS OF LBS.										RAD. FT.					
	60	70	80	90	100	110	120	130	140	150		160	170	180	190	200
11	300.0	297.1	277.1	250.7	231.3	215.5	197.0	176.9	157.0	144.5	133.6	124.7	111.3	100.0	90.0	80.0
11	269.0	268.0	259.0	247.1	237.2	228.2	218.2	208.2	198.2	188.2	178.2	168.2	158.2	148.2	138.2	128.2
11	238.0	238.0	229.0	217.1	207.2	198.2	188.2	178.2	168.2	158.2	148.2	138.2	128.2	118.2	108.2	98.2
11	207.0	207.0	198.0	186.1	176.2	167.2	157.2	147.2	137.2	127.2	117.2	107.2	97.2	87.2	77.2	67.2
11	176.0	176.0	167.0	155.1	145.2	136.2	126.2	116.2	106.2	96.2	86.2	76.2	66.2	56.2	46.2	36.2
11	145.0	145.0	136.0	124.1	114.2	105.2	95.2	85.2	75.2	65.2	55.2	45.2	35.2	25.2	15.2	5.2
11	114.0	114.0	105.0	93.1	83.2	74.2	64.2	54.2	44.2	34.2	24.2	14.2	4.2	0.2	0.2	0.2
11	83.0	83.0	74.0	62.1	52.2	43.2	33.2	23.2	13.2	3.2	0.2	0.2	0.2	0.2	0.2	0.2
11	52.0	52.0	43.0	31.1	21.2	12.2	2.2	0.2	0.2	0.2	0.2	0.2	0.2	0.2	0.2	0.2
11	21.0	21.0	12.0	0.1	0.2	0.2	0.2	0.2	0.2	0.2	0.2	0.2	0.2	0.2	0.2	0.2

CAPACITIES ARE FOR A CRAWLER MACHINE WHEN OPERATING ON A BARGE. MACHINE SHALL BE POSITIVELY SECURED TO PREVENT SHIFTING. CAPACITIES FOR VARIOUS BOOM LENGTHS AND OPERATING RADII ARE FOR FREELY SUSPENDED LOADS AND DO NOT EXCEED 75% OF A STATIC TIPPING LOAD. CAPACITIES BASED ON STRUCTURAL COMPETENCE ARE DENOTED BY AN ASTERISK (*).

WEIGHT OF ALL LOAD BLOCKS, HOOKS, WEIGHT BALLS, SLINGS, HOIST LINES BENEATH BOOM POINT SHEAVES, ETC. IS CONSIDERED PART OF THE MAIN BOOM LOAD. BOOM IS NOT ALLOWED TO BEYOND BEING APPROVED.

REFER TO RIGGING #482277 LOAD LINE SPECIFICATION CHART #5208 AND RANGE CHART #4756. CRANE OPERATOR JUDGMENT MUST BE USED TO ALLOW DEPRECIATION.

OPERATING RADIUS IS THE HORIZONTAL DISTANCE FROM THE AXIS OF ROTATION AT BARGE DECK TO THE CENTER OF VERTICAL HOIST LINE OR LOAD BLOCK.

MACHINE EQUIPPED WITH 24' EXTENDIBLE CRAWLERS, 42 IN. TREADS, 15' RETRACTABLE GANTRY, 12 PART BOOM HOIST REEVING, TAG 2 IN. BOOM PENDANTS, 1ST CRT. = 40,100#, 2ND CRT. = 35,800#, 3RD CRT. = 28,500#.

MANITOWOC 400CW - 24' CRAWLERS EXTENDED
 LIFT CRANE CAPACITIES - 104,400# CWT.
 BGC# #17 WITH OPEN THROAT TOP

CRAWLER MACHINE ON BARGE - 2 DEGREE MACHINE LIST

RAD. IN FT.	CAPACITIES IN THOUSANDS OF LBS.												RAD. IN FT.			
	60	70	80	90	100	110	120	130	140	150	160	170		180	190	200
16	230.6*	206.3*	182.0*	157.9*	143.7*	129.8*	117.4*	106.7*	98.6*	93.0*	89.5*	82.5*	75.0*	66.1*	57.7*	50.1*
17	227.5*	203.6*	177.8*	154.0*	140.9*	127.4*	115.1*	104.0*	96.1*	90.5*	87.0*	80.0*	72.5*	63.6*	55.2*	47.6*
18	224.6*	201.0*	175.8*	152.0*	138.9*	125.4*	113.1*	102.0*	94.1*	88.5*	85.0*	78.0*	70.5*	61.6*	53.2*	45.6*
19	216.7*	198.5*	171.8*	149.0*	135.9*	122.4*	110.1*	99.0*	91.1*	85.5*	82.0*	75.0*	67.5*	58.6*	50.2*	42.6*
20	209.8*	196.1*	167.8*	144.0*	130.9*	117.4*	105.1*	94.0*	86.1*	80.5*	77.0*	70.0*	62.5*	53.6*	45.2*	37.6*
22	178.0*	171.4*	148.7*	132.7*	119.6*	107.3*	95.1*	84.0*	76.1*	70.5*	67.0*	60.0*	52.5*	43.6*	35.2*	27.6*
24	158.8*	155.6*	132.7*	117.8*	104.7*	92.4*	80.1*	69.0*	61.1*	55.5*	52.0*	45.0*	37.5*	28.6*	20.2*	12.6*
26	125.4*	122.6*	100.7*	89.6*	79.4*	70.1*	61.7*	53.8*	46.1*	40.5*	37.0*	30.0*	22.5*	14.6*	7.2*	0.6*
30	114.2*	111.7*	90.7*	79.6*	69.4*	60.1*	51.7*	43.8*	36.1*	30.5*	27.0*	20.0*	12.5*	5.6*	0.0*	0.0*
32	96.8*	94.8*	73.5*	62.4*	52.2*	42.9*	34.5*	26.6*	18.9*	13.3*	10.0*	3.0*	0.0*	0.0*	0.0*	0.0*
34	89.9*	88.0*	66.7*	55.6*	45.4*	36.1*	27.7*	19.8*	12.1*	6.5*	3.0*	0.0*	0.0*	0.0*	0.0*	0.0*
36	82.0*	80.0*	58.8*	47.7*	37.5*	28.2*	19.8*	11.9*	4.2*	0.0*	0.0*	0.0*	0.0*	0.0*	0.0*	0.0*
38	78.5*	76.8*	55.2*	44.1*	33.9*	24.6*	16.2*	8.4*	0.0*	0.0*	0.0*	0.0*	0.0*	0.0*	0.0*	0.0*
40	74.5*	72.8*	51.6*	40.5*	30.3*	21.0*	12.4*	4.6*	0.0*	0.0*	0.0*	0.0*	0.0*	0.0*	0.0*	0.0*
45	59.2*	57.1*	44.1*	33.3*	23.7*	15.1*	7.1*	0.0*	0.0*	0.0*	0.0*	0.0*	0.0*	0.0*	0.0*	0.0*
50	52.6*	51.3*	41.6*	30.6*	22.0*	13.3*	5.3*	0.0*	0.0*	0.0*	0.0*	0.0*	0.0*	0.0*	0.0*	0.0*
60	47.4*	46.0*	38.0*	28.3*	20.5*	11.8*	3.8*	0.0*	0.0*	0.0*	0.0*	0.0*	0.0*	0.0*	0.0*	0.0*
65																
70																
75																
80																
85																
90																
100																
110																
120																
130																
140																
150																
160																
170																
175																

CAPACITIES ARE FOR A CRAWLER MACHINE WHEN OPERATING ON A BARGE. MACHINE SHALL BE POSITIVELY SECURED TO PREVENT SHIFTING.
 CAPACITIES FOR VARIOUS BOOM LENGTHS AND OPERATING RADIUS ARE FOR FREELY SUSPENDED LOADS AND DO NOT EXCEED 75% OF A STATIC TIPPING
 LOAD. CAPACITIES BASED ON STRUCTURAL COMPETENCE ARE DENOTED BY AN ASTERISK (*).
 WEIGHT OF ALL LOAD BLOCKS, HOOKS, WEIGHT BALL, SLINGS, HOIST LINES, BENEATH BOOM POINT SHEAVES, ETC. IS CONSIDERED PART OF THE MAIN
 BOOM LOAD. BOOM IS NOT TO BE LOWERED BEYOND RADIUS WHERE COMBINED WEIGHTS ARE GREATER THAN RATED CAPACITY. WHERE NO CAPACITY IS
 SHOWN, OPERATION IS NOT INTENDED OR APPROVED.
 REFER TO RIGGING #48227; LOAD LINE SPECIFICATION CHART #2308 AND RANGE CHART #4796. CRANE OPERATOR JUDGMENT MUST BE USED TO ALLOW
 FOR DYNAMIC LOAD EFFECTS OF SWINGING, HOISTING OR LOWERING, AS WELL AS ADVERSE OPERATING CONDITIONS AND PHYSICAL MACHINE
 DEPRECIATION.
 OPERATING RADIUS IS THE HORIZONTAL DISTANCE FROM THE AXIS OF ROTATION AT BARGE DECK TO THE CENTER OF VERTICAL HOIST LINE OR LOAD
 BLOCK.
 MACHINE EQUIPPED WITH 24' EXTENDIBLE CRAWLERS, 48 IN. TREADS, 15' RETRACTABLE GANTRY, 12 PART BOOM HOIST REEVING, TWO 2 IN. BOOM
 PENDANTS, 1ST CWT. = 40,100#; 2ND CWT. = 35,800#; 3RD CWT. = 28,500#.

MANITOWOC ENGINEERING CO.
 MANITOWOC, WISCONSIN

DJK
 04/28/77, Rev. 8/1/78
 DRWG. #6508-B

MANITOWOC 460GW - 24° CRANLERS EXTENDED

LIFT CRANE CAPACITIES - 105,400# GWT

BECK #17 WITH OPEN THROAT TOP

CRANLER MACHINE ON BARGE - 3 DEGREE MACHINE LIST

RAD. IN FT.	CAPACITIES IN THOUSANDS OF LBS.										RAD. IN FT.						
	50	60	70	80	90	100	110	120	130	140		150	160	170	180	190	200
17	201.0*																
17	176.4*																
17	172.4*																
17	155.25*																
22	163.7	137.0*															
22	143.0	110.7	105.0*														
22	128.0	103.3	105.5*														
32	107.7	91.5	91.5	156.4*	121.5*	105.0*	95.8*	82.4	70.9	60.9	50.8*						
32	91.5	74.8	74.8	150.0	117.4	100.0	89.0	76.7	66.0	55.9	45.8	35.7	25.6	15.5	5.4		
40	74.8	61.0	61.0	143.0	110.7	95.0	84.0	72.7	62.0	51.9	41.8	31.7	21.6	11.5	1.4		
40	57.0	44.2	44.2	137.0	105.0	90.0	79.0	67.7	57.0	46.9	36.8	26.7	16.6	6.5	6.4		
50	45.0	32.2	32.2	130.0	98.0	83.0	72.0	60.7	50.0	39.9	29.8	19.7	9.6	9.5	9.4		
50	30.0	17.2	17.2	124.0	91.0	76.0	65.0	53.7	43.0	32.9	22.8	12.7	12.6	12.5	12.4		
60	20.0	7.2	7.2	117.0	84.0	69.0	58.0	46.7	36.0	25.9	15.8	5.7	5.6	5.5	5.4		
60	10.0	2.2	2.2	110.0	77.0	62.0	51.0	39.7	29.0	18.9	8.8	8.7	8.6	8.5	8.4		
70	10.0	1.2	1.2	103.0	70.0	55.0	44.0	32.7	22.0	11.9	1.8	1.7	1.6	1.5	1.4		
80	10.0	0.2	0.2	96.0	63.0	48.0	37.0	25.7	15.0	4.9	4.8	4.7	4.6	4.5	4.4		
90	10.0	0.2	0.2	89.0	56.0	41.0	30.0	18.7	8.0	7.9	7.8	7.7	7.6	7.5	7.4		
100	10.0	0.2	0.2	82.0	49.0	34.0	23.0	11.7	1.0	0.9	0.8	0.7	0.6	0.5	0.4		
110	10.0	0.2	0.2	75.0	42.0	27.0	16.0	5.0	4.9	4.8	4.7	4.6	4.5	4.4	4.3		
120	10.0	0.2	0.2	68.0	35.0	20.0	10.0	4.0	3.9	3.8	3.7	3.6	3.5	3.4	3.3		
130	10.0	0.2	0.2	61.0	28.0	14.0	5.0	3.0	2.9	2.8	2.7	2.6	2.5	2.4	2.3		
140	10.0	0.2	0.2	54.0	21.0	8.0	4.0	2.0	1.9	1.8	1.7	1.6	1.5	1.4	1.3		
150	10.0	0.2	0.2	47.0	14.0	3.0	3.0	1.0	0.9	0.8	0.7	0.6	0.5	0.4	0.3		
160	10.0	0.2	0.2	40.0	7.0	2.0	2.0	0.0	0.0	0.0	0.0	0.0	0.0	0.0	0.0		
170	10.0	0.2	0.2	33.0	0.0	1.0	1.0	0.0	0.0	0.0	0.0	0.0	0.0	0.0	0.0		
180	10.0	0.2	0.2	26.0	0.0	0.0	0.0	0.0	0.0	0.0	0.0	0.0	0.0	0.0	0.0		
190	10.0	0.2	0.2	19.0	0.0	0.0	0.0	0.0	0.0	0.0	0.0	0.0	0.0	0.0	0.0		
200	10.0	0.2	0.2	12.0	0.0	0.0	0.0	0.0	0.0	0.0	0.0	0.0	0.0	0.0	0.0		

CAPACITIES ARE FOR A CRANLER MACHINE WHEN OPERATING ON A BARGE. MACHINE SHALL BE POSITIVELY SECURED TO PREVENT SHIFTING, TIPPING OR COLLAPSE. CAPACITIES FOR VARIOUS BOOM LENGTHS AND OPERATING RADII ARE FOR FREELY SUSPENDED LOADS AND DO NOT EXCEED 75% OF A STATIC TIPPING LOAD. CAPACITIES BASED ON STRUCTURAL COMPETENCE ARE DENOTED BY AN ASTERISK (*). WEIGHT OF ALL LOAD BLOCKS, HOOKS, WEIGHT BALLS, SLINGS, HOIST LINES BENEATH BOOM POINT SHEAVES, ETC. IS CONSIDERED PART OF THE MAIN BOOM LOAD. BOOM IS NOT TO BE LOWERED BEYOND BEYOND RADIUS WHERE COMBINED WEIGHTS ARE GREATER THAN RATED CAPACITY. WHERE NO CAPACITY IS SHOWN, OPERATION IS NOT INTENDED OR APPROVED.

REFER TO RIGGING #48227, LOAD LINE SPECIFICATION CHART #5308 AND RANGE CHART #4796. CRANE OPERATOR JUDGMENT MUST BE USED TO ALLOW FOR DYNAMIC LOAD EFFECTS OF SWINGING, HOISTING OR LOWERING, AS WELL AS ADVERSE OPERATING CONDITIONS AND PHYSICAL MACHINE DEPRECIATION.

OPERATING RADIUS IS THE HORIZONTAL DISTANCE FROM THE AXIS OF ROTATION AT BARGE DECK TO THE CENTER OF VERTICAL HOIST LINE OR LOAD BLOCK.

MACHINE EQUIPPED WITH 24° EXTENDIBLE CRANLERS. 48 IN. TREADS, 15' RETRACTABLE GANTRY, 12 PART BOOM HOIST KEEPING, TWO 2 IN. BOOM PENDANTS, 1ST CRT. = 40,100#, 2ND CRT. = 35,800#, 3RD CRT. = 28,500#.

MANITOWOC ENGINEERING CO.
MANITOWOC, WISCONSIN

DJK
2/28/77, Rev. 8/1/78
Drawing #8908-C

MANITOWOC 4000W - 24' CRAWLERS EXTENDED
 LIFT CRANE CAPACITIES - 104,400# CRT.
 BOOM #22 WITH OPEN THROAT TOP
 CRAWLER MACHINE ON BARGE - 0 DEGREE MACHINE LIST

RAD. IN FT.	CAPACITIES IN THOUSANDS OF LBS.											RAD. IN FT.		
	70	80	90	100	110	120	130	140	150	160	170		180	190
17	300.0#	284.0#	267.0#	243.0#	215.9#	186.8#	158.4	140.5	129.7	120.0	112.0	105.0	99.0	95.0
18	285.0#	269.0#	252.0#	228.0#	200.0#	171.5	143.0	125.0	114.0	106.0	100.0	94.0	89.0	85.0
20	249.0#	233.0#	216.0#	192.0#	164.0#	135.5	107.0	90.0	81.0	75.0	70.0	65.0	61.0	58.0
22	212.0#	196.0#	179.0#	155.0#	127.0#	98.5	70.0	53.0	44.0	40.0	36.0	32.0	29.0	27.0
24	183.0#	167.0#	150.0#	126.0#	98.0#	70.0	53.0	36.0	27.0	23.0	20.0	17.0	15.0	14.0
26	160.0#	144.0#	127.0#	103.0#	75.0#	57.0	40.0	23.0	14.0	11.0	9.0	7.0	6.0	5.0
30	143.0#	127.0#	110.0#	86.0#	58.0#	40.0	23.0	6.0	0.0	0.0	0.0	0.0	0.0	0.0
32	128.0#	112.0#	95.0#	71.0#	43.0#	25.0	8.0	0.0	0.0	0.0	0.0	0.0	0.0	0.0
34	116.0#	100.0#	83.0#	59.0#	31.0#	15.0	0.0	0.0	0.0	0.0	0.0	0.0	0.0	0.0
38	99.0#	83.0#	66.0#	42.0#	17.0#	0.0	0.0	0.0	0.0	0.0	0.0	0.0	0.0	0.0
40	91.0#	75.0#	58.0#	34.0#	10.0#	0.0	0.0	0.0	0.0	0.0	0.0	0.0	0.0	0.0
45	71.0#	55.0#	38.0#	20.0#	0.0#	0.0	0.0	0.0	0.0	0.0	0.0	0.0	0.0	0.0
50	54.0#	38.0#	21.0#	0.0#	0.0#	0.0	0.0	0.0	0.0	0.0	0.0	0.0	0.0	0.0
55	48.0#	32.0#	15.0#	0.0#	0.0#	0.0	0.0	0.0	0.0	0.0	0.0	0.0	0.0	0.0
60	43.0#	27.0#	10.0#	0.0#	0.0#	0.0	0.0	0.0	0.0	0.0	0.0	0.0	0.0	0.0
70	38.0#	22.0#	5.0#	0.0#	0.0#	0.0	0.0	0.0	0.0	0.0	0.0	0.0	0.0	0.0
80	33.0#	17.0#	0.0#	0.0#	0.0#	0.0	0.0	0.0	0.0	0.0	0.0	0.0	0.0	0.0
90	28.0#	12.0#	0.0#	0.0#	0.0#	0.0	0.0	0.0	0.0	0.0	0.0	0.0	0.0	0.0
95	25.0#	10.0#	0.0#	0.0#	0.0#	0.0	0.0	0.0	0.0	0.0	0.0	0.0	0.0	0.0
100	22.0#	8.0#	0.0#	0.0#	0.0#	0.0	0.0	0.0	0.0	0.0	0.0	0.0	0.0	0.0
105	19.0#	6.0#	0.0#	0.0#	0.0#	0.0	0.0	0.0	0.0	0.0	0.0	0.0	0.0	0.0
110	16.0#	4.0#	0.0#	0.0#	0.0#	0.0	0.0	0.0	0.0	0.0	0.0	0.0	0.0	0.0
115	13.0#	2.0#	0.0#	0.0#	0.0#	0.0	0.0	0.0	0.0	0.0	0.0	0.0	0.0	0.0
120	10.0#	0.0#	0.0#	0.0#	0.0#	0.0	0.0	0.0	0.0	0.0	0.0	0.0	0.0	0.0
125	8.0#	0.0#	0.0#	0.0#	0.0#	0.0	0.0	0.0	0.0	0.0	0.0	0.0	0.0	0.0
130	6.0#	0.0#	0.0#	0.0#	0.0#	0.0	0.0	0.0	0.0	0.0	0.0	0.0	0.0	0.0
140	4.0#	0.0#	0.0#	0.0#	0.0#	0.0	0.0	0.0	0.0	0.0	0.0	0.0	0.0	0.0
150	2.0#	0.0#	0.0#	0.0#	0.0#	0.0	0.0	0.0	0.0	0.0	0.0	0.0	0.0	0.0
160	0.0#	0.0#	0.0#	0.0#	0.0#	0.0	0.0	0.0	0.0	0.0	0.0	0.0	0.0	0.0
165	0.0#	0.0#	0.0#	0.0#	0.0#	0.0	0.0	0.0	0.0	0.0	0.0	0.0	0.0	0.0

CAPACITIES ARE FOR A CRAWLER MACHINE WHEN OPERATING ON A BARGE. MACHINE SHALL BE POSITIVELY SECURED TO PREVENT SHIFTING.
 CAPACITIES FOR VARIOUS BOOM LENGTHS AND OPERATING RADI ARE FOR FREELY SUSPENDED LOADS AND DO NOT EXCEED 75% OF A STATIC TIPPING
 LOAD. CAPACITIES BASED ON STRUCTURAL COMPETENCE ARE DENOTED BY AN ASTERISK (*).
 WEIGHT OF ALL LOAD BLOCKS, HOOKS, WEIGHT BALLS, SLINGS, HOIST LINES BENEATH BOOM POINT SHEAVES, ETC. IS CONSIDERED PART OF THE MAIN
 BOOM POINT IS ATTACHED. DEDUCT 1200# FROM ABOVE CAPACITIES WHEN TRUSSABLE SHEAVE UPPER BOOM POINT IS ATTACHED AND 1,500# WHEN TAG SHEAVE UPPER
 BOOM POINT IS ATTACHED. BOOM IS NOT TO BE LOWERED BEYOND RADIUS WHERE COMBINED WEIGHTS ARE GREATER THAN RATED CAPACITY. WHERE NO
 CAPACITY IS SHOWN, OPERATION IS NOT INTENDED OR APPROVED.
 REFER TO RIGGING #48168 LOAD LINE SPECIFICATION CHART #5320 AND RANGE CHART #5359. CRANE OPERATOR JUDGMENT MUST BE USED TO ALLOW
 FOR DYNAMIC LOAD EFFECTS OF SWINGING, HOISTING OR LOWERING, AS WELL AS ADVERSE OPERATING CONDITIONS AND PHYSICAL MACHINE
 DEPRECIATION.
 OPERATING RADIUS IS THE HORIZONTAL DISTANCE FROM THE AXIS OF ROTATION AT BARGE DECK TO THE CENTER OF VERTICAL HOIST LINE OR LOAD
 BLOCK.
 MACHINE EQUIPPED WITH 24' EXTENDIBLE CRAWLERS, 48 IN. TREADS, 15' RETRACTABLE GANTRY, 12 PART BOOM HOIST REEVING, FOUR 1-3/8 IN.
 BOOM PENDANTS, 1ST CRT. = 40,100#, 2ND CRT. = 35,900#, 3RD CRT. = 28,500#.

MANITOWOC 4000W - 24° CRAWLERS EXTENDED
 LIFT CRANE CAPACITIES - 104,400# CWT.
 BOOM #22 WITH OPEN THROAT TOP
 CRAWLER MACHINE ON BARGE - 2 DEGREE MACHINE LIST

RAD. FT.	CAPACITIES IN THOUSANDS OF LBS.											RAD. FT.				
	70	80	90	100	110	120	130	140	150	160	170		180	190	200	
17	210.8															178
18	208.5															180
19	206.2															182
20	196.0	188.1	182.8	151.6	136.7	120.1	107.0									184
22	170.0	165.7	161.4	140.3	122.8	108.9	97.0									186
24	150.0	145.7	141.4	120.3	105.3	91.5	80.0									188
26	134.0	130.7	126.4	105.6	91.3	78.4	66.5									190
30	110.0	106.7	102.4	82.0	67.7	55.5	43.0									192
32	93.0	89.7	85.4	65.0	50.7	38.4	26.0									194
34	86.0	82.7	78.4	57.0	42.7	30.4	18.0									196
36	79.0	75.7	71.4	49.0	34.7	22.4	10.0									198
40	65.0	61.7	57.4	37.0	22.7	14.4	3.0									200
50	48.0	44.7	40.4	25.0	10.7	4.4										202
55	40.0	36.7	32.4	17.0	5.7											204
60	35.0	31.7	27.4	12.0	2.7											206
70	25.0	21.7	17.4	6.0	0.7											208
80	18.0	14.7	10.4	3.0	0.3											210
90	13.0	9.7	5.4	1.0	0.1											212
100	10.0	7.7	3.4	0.5	0.0											214
110	8.0	5.7	1.4	0.2	0.0											216
120	6.0	3.7	0.4	0.1	0.0											218
130	4.0	1.7	0.1	0.0	0.0											220
140	3.0	0.7	0.0	0.0	0.0											222
150	2.0	0.3	0.0	0.0	0.0											224
160	1.0	0.1	0.0	0.0	0.0											226
170	0.5	0.0	0.0	0.0	0.0											228
180	0.2	0.0	0.0	0.0	0.0											230
190	0.1	0.0	0.0	0.0	0.0											232
200	0.0	0.0	0.0	0.0	0.0											234

CAPACITIES ARE FOR A CRAWLER MACHINE WHEN OPERATING ON A BARGE. MACHINE SHALL BE POSITIVELY SECURED TO PREVENT SHIFTING. TIPPING LOADS. CAPACITIES BASED ON STRUCTURAL COMPETENCE ARE DENOTED BY AN ASTERISK (*).
 WEIGHT OF ALL LOAD BLOCKS, HOOKS, WEIGHT BALLS, SLINGS, HOIST LINES BENEATH BOOM POINT SHEAVES, ETC. IS CONSIDERED PART OF THE MAIN BOOM POINT IS ATTACHED. FROM ABOUT 1,200# CAPACITIES WHEN SINGLE SHEAVE UPPER BOOM POINT IS ATTACHED AND 1,500# WHEN TWO SHEAVE UPPER CAPACITY IS SHOWN, OPERATION IS NOT INTENDED BEYOND RADIUS WHERE COMBINED WEIGHTS ARE GREATER THAN RATED CAPACITY. WHERE NO REFER TO RIGGING #48168; LOAD LINE SPECIFICATION CHART #5320 AND RANGE CHART #5359. CRANE OPERATOR JUDGMENT MUST BE USED TO ALLOW FOR DYNAMIC LOAD EFFECTS OF SWINGING, HOISTING OR LOWERING, AS WELL AS ADVERSE OPERATING CONDITIONS AND PHYSICAL MACHINE DEPRECIATION.
 OPERATING RADIUS IS THE HORIZONTAL DISTANCE FROM THE AXIS OF ROTATION AT BARGE DECK TO THE CENTER OF VERTICAL HOIST LINE OR LOAD BLOCK.
 MACHINE EQUIPPED WITH 24° EXTENDIBLE CRAWLERS, 48 IN. TREADS, 15' RETRACTABLE GANTRY, 12 PART BOOM HOIST REEVING, FOUR 1-3/8 IN. BOOM PENDANTS, 1ST CWT. = 40,100#, 2ND CWT. = 35,600#, 3RD CWT. = 28,500#.

MANITOWOC 4000W - 24' CRAWLERS EXTENDED
 LIFT CRANE CAPACITIES - 104,400# CRT.
 BOOM #22 WITH OPEN THROAT TOP
 CRAWLER MACHINE ON BARGE - 3 DEGREE MACHINE LIST

RAD. IN. FT.	CAPACITIES IN THOUSANDS OF LBS.													
	70	80	90	100	110	120	130	140	150	160	170	180	190	200
18	192.9#													
19	184.6#													
20	176.3#	168.0#												
21	168.0#	159.7#	149.5#											
22	159.7#	151.4#	141.2#	124.0#										
23	151.4#	143.1#	132.9#	115.7#	109.2#									
24	143.1#	134.8#	124.6#	107.4#	99.9#	96.9#								
25	134.8#	126.5#	116.3#	99.6#	92.1#	87.1#	81.6#							
26	126.5#	118.2#	108.0#	92.3#	84.8#	79.8#	74.3#	71.6#						
27	118.2#	109.9#	99.7#	84.0#	76.5#	71.5#	66.0#	61.0#	64.6#					
28	109.9#	101.6#	91.4#	75.7#	68.2#	63.2#	57.7#	52.7#	48.8#	55.9#				
29	101.6#	93.3#	83.1#	67.4#	60.9#	55.9#	50.4#	45.4#	41.5#	38.6#	46.7#			
30	93.3#	85.0#	74.8#	59.1#	52.6#	47.6#	42.1#	37.1#	33.2#	30.3#	27.4#	35.5#		
31	85.0#	76.7#	66.5#	50.8#	44.3#	39.3#	33.8#	28.8#	24.9#	22.0#	19.1#	16.2#	13.3#	
32	76.7#	68.4#	58.2#	42.5#	36.0#	31.0#	25.5#	20.5#	16.6#	13.7#	10.8#	7.9#	5.0#	2.1#
33	68.4#	60.1#	49.9#	34.2#	27.7#	22.7#	17.2#	12.2#	8.3#	5.4#	2.5#			
34	60.1#	51.8#	41.6#	25.9#	19.4#	14.4#	9.9#	4.9#	1.0#					
35	51.8#	43.5#	33.3#	17.6#	11.1#	6.1#	1.1#							
36	43.5#	35.2#	25.0#	9.3#	2.8#									
37	35.2#	26.9#	16.7#	1.5#										
38	26.9#	18.6#	8.4#											
39	18.6#	10.3#												
40	10.3#													
41														
42														
43														
44														
45														

CAPACITIES ARE FOR A CRAWLER MACHINE WHEN OPERATING ON A BARGE. MACHINE SHALL BE POSITIVELY SECURED TO PREVENT SHIFTING. TIPPING CAPACITIES ARE FOR LOUS BOOM LENGTHS AND OPERATING RADII ARE FOR FREELY SUSPENDED LOADS AND DO NOT EXCEED 75% OF A STATIC TIPPING LOAD. CAPACITIES BASED ON STRUCTURAL COMPETENCE ARE DENOTED BY AN ASTERISK (*).
 WEIGHT OF ALL LOAD BLOCKS, HOOKS, WEIGHT BALL, SLINGS, HOIST LINES BENEATH BOOM POINT, SHEAVES, ETC. IS CONSIDERED PART OF THE MAIN BOOM LOAD. DEDUCT 1,200# FROM ABOVE CAPACITIES WHEN SINGLE SHEAVE UPPER BOOM POINT IS ATTACHED AND 1,500# WHEN TWO SHEAVE UPPER BOOM POINT IS ATTACHED. BOOM IS NOT TO BE LOWERED BEYOND RADII WHERE COMBINED WEIGHTS ARE GREATER THAN RATED CAPACITY. WHERE NO CAPACITY IS SHOWN, OPERATION IS NOT INTENDED OR APPROVED.
 REFER TO RIGGING #48168; LOAD LINE SPECIFICATION CHART #5320 AND RANGE CHART #5355. CRANE OPERATOR JUDGMENT MUST BE USED TO ALLOW FOR DYNAMIC LOAD EFFECTS OF SWINGING, HOISTING OR LOWERING, AS WELL AS ADVERSE OPERATING CONDITIONS AND PHYSICAL MACHINE DEPRECIATION.
 OPERATING RADIUS IS THE HORIZONTAL DISTANCE FROM THE AXIS OF ROTATION AT BARGE DECK TO THE CENTER OF VERTICAL HOIST LINE OR LOAD BLOCK.
 MACHINE EQUIPPED WITH 24' EXTENDIBLE CRAWLERS, 48 IN. TREADS, 15' RETRACTABLE GANTRY, 12 PART BOOM HOIST REEVING, FOUR 1-3/8 IN. BOOM PENDANTS, 1ST CRT. = 40,100#, 2ND CRT. = 35,800#, 3RD CRT. = 28,500#.

DJK
 04/21/77 Rev. 8/1/78
 DRMG #6909-C
 MANITOWOC ENGINEERING CO.
 MANITOWOC, WISCONSIN

SEE CONDITIONS ON REVERSE SIDE

110		120		130		140		150		160		170		180		190			
Boom Lgth: Feet	Oper. Rad: Feet	Bm. Ang: Deg.	Boom Point: Elev.	Capacity: Crawlers Retracted	Capacity: Crawlers Extended	Boom Lgth: Feet	Oper. Rad: Feet	Bm. Ang: Deg.	Boom Point: Elev.	Capacity: Crawlers Retracted	Capacity: Crawlers Extended	Boom Lgth: Feet	Oper. Rad: Feet	Bm. Ang: Deg.	Boom Point: Elev.	Capacity: Crawlers Retracted	Capacity: Crawlers Extended		
20	81.5	115.9	205,500	215,900	80	57.0	124.5	26,300	30,600	115	49.1	135.6	13,000	15,800	115	49.1	135.6	13,000	15,800
22	80.4	115.6	175,700	212,000	85	54.0	121.1	23,900	27,900	120	46.8	131.1	11,900	14,500	120	46.8	131.1	11,900	14,500
24	79.3	115.2	153,200	183,500	90	51.9	117.3	21,800	25,500	125	44.5	126.2	10,900	13,400	125	44.5	126.2	10,900	13,400
26	78.3	114.8	135,600	161,100	95	49.3	113.2	20,000	23,400	130	42.0	120.9	10,000	12,300	130	42.0	120.9	10,000	12,300
28	77.2	114.4	121,400	143,300	100	46.5	108.7	18,300	21,600	135	39.4	115.0	9,100	11,400	135	39.4	115.0	9,100	11,400
30	76.1	113.9	109,700	128,900	105	43.6	103.7	16,900	19,900	140	36.7	108.7	8,300	10,500	140	36.7	108.7	8,300	10,500
32	75.1	113.4	100,000	117,000	110	40.6	98.2	15,500	18,400	145	33.8	101.6	7,500	9,700	145	33.8	101.6	7,500	9,700
34	74.0	112.8	91,700	107,000	115	37.3	92.0	14,300	17,000	150	30.6	93.6	6,900	8,900	150	30.6	93.6	6,900	8,900
36	72.9	112.2	84,600	98,400	120	33.8	85.0	13,200	15,800	155	27.1	84.6	6,200	8,200	155	27.1	84.6	6,200	8,200
38	71.8	111.6	78,500	91,000	125	29.9	76.9	12,200	14,700	160	23.1	73.9	5,700	7,500	160	23.1	73.9	5,700	7,500
40	70.7	110.9	73,100	84,600	130	25.3	67.4	11,300	13,600	165	18.4	60.7	5,100	6,900	165	18.4	60.7	5,100	6,900
45	67.9	109.0	62,100	71,600	135	20.5	55.6	10,400	12,700										
50	65.1	106.9	53,700	61,800															
55	62.2	104.4	47,000	54,100															
60	59.2	101.6	41,700	47,900															
65	56.1	98.4	37,200	42,900	26	81.4	155.4	134,100	157,000	32	80.9	184.9	97,300	114,500	32	80.9	184.9	97,300	114,500
70	52.9	94.9	33,500	38,600	28	80.7	155.1	119,900	142,000	34	80.3	184.5	89,000	104,400	34	80.3	184.5	89,000	104,400
75	49.6	90.8	30,400	35,000	30	79.9	154.8	108,200	127,500	36	79.7	184.2	81,800	95,800	36	79.7	184.2	81,800	95,800
80	46.1	86.3	27,600	31,900	32	79.1	154.4	98,500	115,600	38	79.0	183.8	75,600	88,400	38	79.0	183.8	75,600	88,400
85	42.3	81.2	25,300	29,200	34	78.3	154.0	90,200	105,500	40	78.4	183.4	70,200	81,900	40	78.4	183.4	70,200	81,900
90	38.3	75.3	23,200	26,800	36	77.6	153.6	83,100	96,900	45	76.7	182.3	59,100	68,800	45	76.7	182.3	59,100	68,800
95	33.9	68.4	21,300	24,700	38	76.8	153.1	76,900	89,500	50	75.1	181.0	50,700	59,000	50	75.1	181.0	50,700	59,000
100	28.9	60.2	19,700	22,900	40	76.0	152.6	71,400	83,100	55	73.4	179.6	44,000	51,200	55	73.4	179.6	44,000	51,200
105	22.9	49.9	18,200	21,200	45	74.0	151.3	66,400	79,100	60	71.8	178.1	38,600	45,000	60	71.8	178.1	38,600	45,000
					50	72.0	149.8	62,000	60,200	65	70.1	176.3	34,200	39,900	65	70.1	176.3	34,200	39,900
22	81.2	125.7	175,500	186,800	55	70.0	148.0	45,300	52,500	70	68.4	174.4	30,400	35,600	70	68.4	174.4	30,400	35,600
24	80.2	125.4	153,000	183,400	60	67.3	146.1	40,000	46,300	75	66.7	172.4	27,300	32,000	75	66.7	172.4	27,300	32,000
26	79.3	125.0	135,300	160,900	65	65.9	144.0	35,500	41,200	80	64.9	170.1	24,500	28,800	80	64.9	170.1	24,500	28,800
28	78.3	124.6	121,100	143,100	70	63.8	141.6	31,800	36,900	85	63.1	167.7	22,100	26,100	85	63.1	167.7	22,100	26,100
30	77.3	124.2	109,500	128,700	75	61.6	139.1	28,600	33,300	90	61.3	165.0	20,000	23,700	90	61.3	165.0	20,000	23,700
32	76.3	123.7	99,700	116,800	80	59.4	136.2	25,900	30,200	95	59.5	162.2	18,200	21,600	95	59.5	162.2	18,200	21,600
34	75.4	123.2	91,500	106,700	85	57.2	133.1	23,500	27,500	100	57.6	159.2	16,500	19,800	100	57.6	159.2	16,500	19,800
36	74.4	122.7	84,400	98,800	90	54.9	129.8	21,400	25,100	105	55.7	155.9	15,000	18,100	105	55.7	155.9	15,000	18,100
38	73.4	122.1	78,200	90,800	95	52.5	126.1	19,500	23,000	110	54.8	152.3	13,700	16,600	110	54.8	152.3	13,700	16,600
40	72.4	121.5	72,800	84,300	100	50.0	122.1	17,900	21,100	115	51.8	148.5	12,500	15,200	115	51.8	148.5	12,500	15,200
45	69.9	119.8	61,800	71,400	105	47.5	117.7	16,400	19,500	120	49.7	144.5	11,300	14,000	120	49.7	144.5	11,300	14,000
50	65.3	117.8	53,400	61,500	110	44.9	112.9	15,100	17,900	130	45.6	140.1	10,300	12,800	130	45.6	140.1	10,300	12,800
55	64.7	115.6	46,700	53,800	120	39.1	107.6	14,200	16,600	135	43.1	130.2	8,500	10,900	135	43.1	130.2	8,500	10,900
60	62.0	113.1	41,400	47,600	125	36.0	95.3	11,700	14,200	140	40.8	124.6	7,700	9,800	140	40.8	124.6	7,700	9,800
65	59.3	110.2	36,900	42,600	130	32.6	88.0	10,800	13,200	145	38.3	118.6	7,000	9,100	145	38.3	118.6	7,000	9,100
70	56.4	107.1	33,200	38,300	135	28.9	79.6	9,900	12,200	150	35.6	111.9	6,300	8,300	150	35.6	111.9	6,300	8,300
75	53.5	103.6	30,000	34,700	140	24.6	69.7	9,100	11,300	155	32.8	104.6	5,700	7,600	155	32.8	104.6	5,700	7,600
80	50.5	99.7	27,300	31,600	145	19.6	57.4	8,400	10,500	160	30.3	97.3	5,100	6,800	160	30.3	97.3	5,100	6,800
85	47.3	95.3	24,900	28,900						165	26.8	86.9	4,500	5,300	165	26.8	86.9	4,500	5,300
90	44.0	90.5	22,800	26,500						170	22.5	75.9	4,000	5,200	170	22.5	75.9	4,000	5,200
95	40.4	84.9	21,000	24,400	28	81.3	165.2	119,600	141,700	175	17.9	62.3	3,500	4,800	175	17.9	62.3	3,500	4,800
100	36.6	78.7	19,300	22,600	30	80.3	164.3	107,900	127,300	32	81.4	195.0	96,900	114,100	32	81.4	195.0	96,900	114,100
105	32.4	71.4	17,900	20,900	32	79.8	164.6	98,100	115,300	34	80.8	194.7	88,500	104,000	34	80.8	194.7	88,500	104,000
110	27.6	62.7	16,500	19,400	34	79.1	164.2	89,800	105,200	36	80.2	194.3	81,400	95,400	36	80.2	194.3	81,400	95,400
115	21.9	51.9	15,300	18,000	36	78.3	163.8	82,700	96,600	38	79.6	194.0	75,200	88,000	38	79.6	194.0	75,200	88,000
					38	77.6	163.4	76,500	89,200	40	79.0	193.6	69,700	81,500	40	79.0	193.6	69,700	81,500
					40	76.9	162.9	71,100	82,800										
					45	75.0	161.7	60,100	69,700										
					50	73.1	158.2	50,400	58,200										
					55	71.3	156.6	45,000	52,200										
					60	69.4	156.9	39,600	45,900										
					65	67.4	154.9	35,200	40,800										
					70	65.5	152.7	31,000	36,600										
					75	63.5	150.3	28,200	32,900										
					80	61.5	147.7	25,500	29,800										
					85	59.4	144.9	23,100	27,100										
					90	57.3	141.8	21,000	24,700										
					95	55.2	138.5	19,200	22,600										
					100	53.0	134.9	17,500	20,800										
					105	50.7	130.9	16,000	19,100										
					110	48.3	126.7	14,700	17,600										
					115	45.9	122.0	13,500	16,200										
					120	43.4	117.0	12,400	15,000										

MANITOWOC ENGINEERING CO.

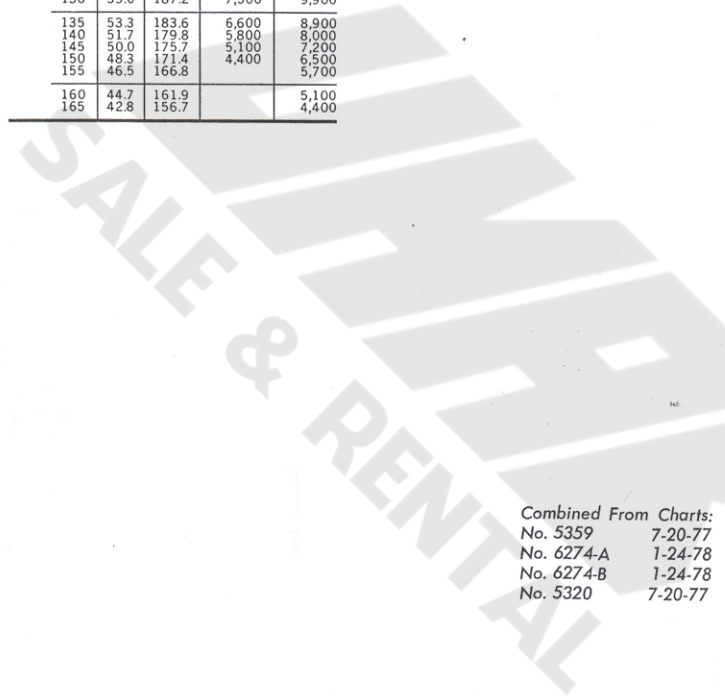
(A division of The Manitowoc Company, Inc.) Manitowoc, Wisconsin 54220



LIFTCRANE CAPACITIES — 4000W
BOOM NO. 22 WITH OPEN THROAT TOP, CONT'D.

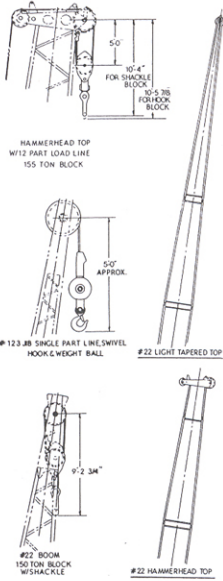
SEE CONDITIONS ON FRONT PAGE

Boom Lgth.: Feet	Oper. Rad.: Feet	Bm. Ang.: Deg.	Boom Point: Elev.	Capacity: Crawlers Retracted	Capacity: Crawlers Extended	Boom Lgth.: Feet	Oper. Rad.: Feet	Bm. Ang.: Deg.	Boom Point: Elev.	Capacity: Crawlers Retracted	Capacity: Crawlers Extended
34	81.3	204.8	88,200	95,500	38	81.0	224.4	73,900	86,800		
36	80.7	204.5	81,000	95,000	40	80.5	224.1	68,500	80,300		
38	80.1	204.1	74,800	87,600	45	79.2	223.2	57,400	67,200		
40	79.5	203.8	69,400	81,100	50	77.8	222.2	48,900	57,300		
45	78.1	202.8	58,300	68,100	55	76.5	221.0	42,200	49,500		
50	76.6	201.7	49,900	58,200	60	75.2	219.8	36,800	43,200		
55	75.1	200.4	43,200	52,400	65	73.8	218.4	32,400	38,100		
60	73.6	199.0	37,800	44,200	70	72.5	216.9	28,600	33,800		
65	72.1	197.5	33,300	39,000	75	71.1	215.2	25,400	30,200		
70	70.6	195.8	29,600	34,800	80	69.7	213.4	22,700	27,000		
75	69.1	194.0	26,400	31,100	85	68.3	211.5	20,300	24,300		
80	67.6	192.0	23,600	28,000	90	66.9	209.5	18,200	21,900		
85	66.0	189.8	21,300	25,300	95	65.5	207.2	16,300	19,800		
90	64.4	187.5	19,200	23,000	100	64.0	204.9	14,600	17,900		
95	62.8	185.0	17,300	20,800	105	62.6	202.4	13,100	16,200		
100	61.2	182.4	15,600	18,900	110	61.1	199.7	11,800	14,700		
105	59.6	179.5	14,100	17,200	115	59.6	196.9	10,600	13,300		
110	57.9	176.5	12,800	15,700	120	58.1	193.8	9,500	12,100		
115	56.2	173.3	11,600	14,300	125	56.5	190.6	8,400	11,000		
120	54.4	169.8	10,500	13,100	130	55.0	187.2	7,500	9,900		
125	52.7	166.1	9,400	12,000	135	53.3	183.6	6,600	8,900		
130	50.8	162.2	8,500	10,900	140	51.7	179.8	5,800	8,000		
135	49.0	157.9	7,700	9,900	145	50.0	175.7	5,100	7,200		
140	47.0	153.4	6,900	9,100	150	48.3	171.4	4,400	6,500		
145	45.0	148.6	6,100	8,200	155	46.5	166.8	3,800	5,700		
150	43.0	143.4	5,400	7,500	160	44.7	161.9	3,200	5,100		
155	40.8	137.9	4,800	6,700	165	42.8	156.7	2,700	4,400		
160	38.6	131.8	4,200	6,100							
165	36.2	125.3	3,700	5,500							
170	33.7	118.2	3,200	4,900							
175	31.1	110.3	2,800	4,300							
36	81.1	214.6	80,600	94,600							
38	80.6	214.3	74,400	87,200							
40	80.0	213.9	68,900	80,700							
45	78.6	213.0	57,900	67,600							
50	77.3	211.9	49,400	57,700							
55	75.9	210.7	42,700	50,000							
60	74.4	209.4	37,300	43,700							
65	73.0	207.9	32,900	38,600							
70	71.6	206.4	29,100	34,300							
75	70.1	204.6	25,900	30,700							
80	68.7	202.7	23,200	27,500							
85	67.2	200.7	20,800	24,800							
90	65.7	198.5	18,700	22,400							
95	64.2	196.2	16,800	20,300							
100	62.7	193.7	15,200	18,500							
105	61.1	191.0	13,700	16,800							
110	59.6	188.2	12,300	15,300							
115	58.0	185.2	11,100	13,900							
120	56.4	181.9	10,000	12,600							
125	54.7	178.5	9,000	11,500							
130	53.0	174.9	8,000	10,400							
135	51.3	171.0	7,200	9,500							
140	49.5	166.8	6,400	8,600							
145	47.7	162.4	5,700	7,800							
150	45.8	157.7	5,000	7,000							
155	43.9	152.7	4,300	6,300							
160	41.9	147.3	3,700	5,600							
165	39.8	141.5	3,200	5,000							
170	37.6	135.3	2,700	4,400							

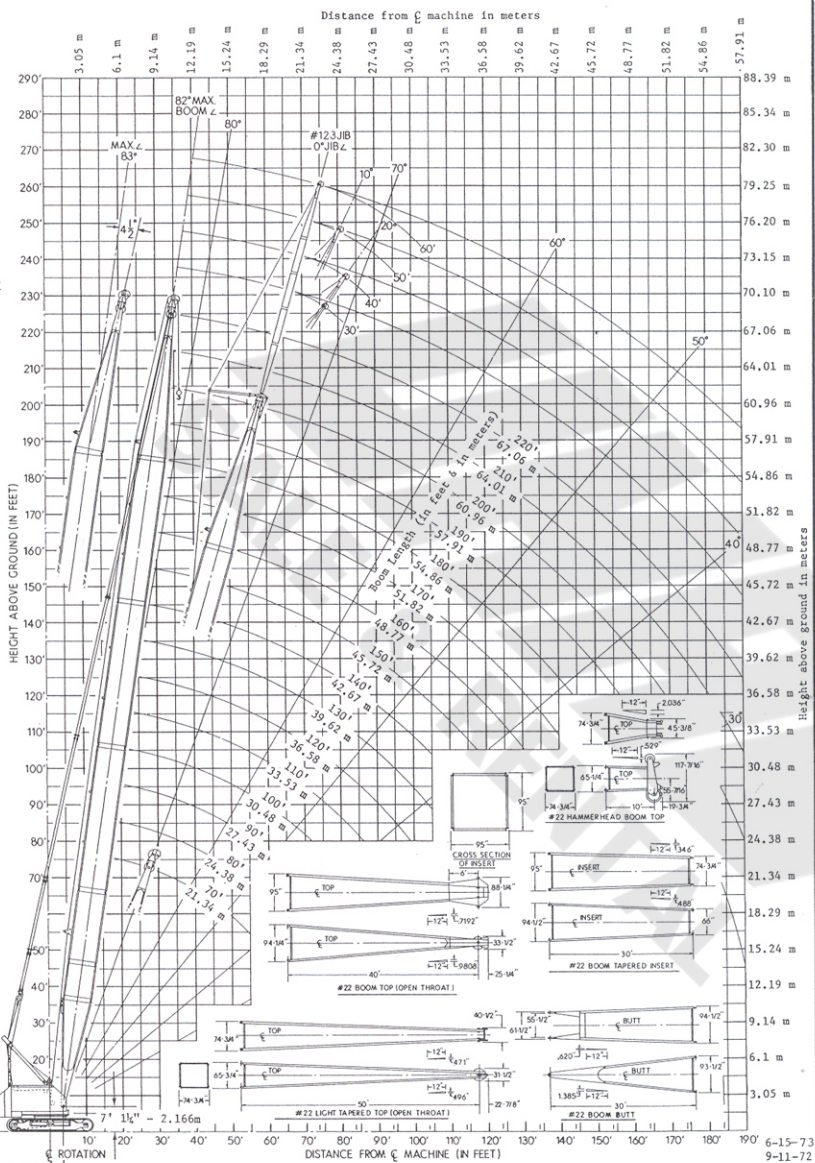


Combined From Charts:
No. 5359 7-20-77
No. 6274-A 1-24-78
No. 6274-B 1-24-78
No. 5320 7-20-77

MAXIMUM BOOM ANGLE
 82° For No. 22 Boom W/Straight Top
 83° For No. 22 Boom W/45° Offset Top
 83° For No. 22 Boom W/Hammerhead Top



- NOTE 1: This drawing is intended only as a guide to assist in job planning.
 NOTE 2: For planning a lift, this drawing is to be used in conjunction with appropriate:
 A. Capacity Charts. C. Load Line Specifications. E. Outline Dimensions.
 B. Range Chart. D. Rigging Drawing.
 NOTE 3: For planning lifts where clearances are limited and accuracy is desired, a detailed layout should be prepared.
 NOTE 4: Distance of MANITOWOC load block to boom point based on 3° fleet angle or physical limitations.
 NOTE 5: When equipped with hoist line limit switch, contact factory for load block to boom point minimum distance.



RANGE DIAGRAM - M4000W - No. 22 BOOM w/ No. 123 JIB And OFFSET TOP

48955

Larger Size Diagrams Available - Contact Dealer.



4000W

JIB LIFTING CAPACITIES

MEETS
ANSI B30.5
REQUIREMENTS

**JIB NO. 123 WITH 12'6" STRUT
NO. 22 BOOM WITH OPEN THROAT TOP - INLINE OR OFFSET
24' CRAWLERS EXTENDED**

20 DEGREE JIB OFFSET ANGLE

Chart supplements boom capacity chart No. 6274-A or No. 6274-C. Capacities are for freely suspended loads based on tipping, strength of structural components or other factors. Crane operator judgment must be used to allow for dynamic load effects of swinging, hoisting or lowering, travel, as well as adverse operating conditions & physical machine depreciation.

Capacities do not exceed **75%** of static tipping load with machine on firm level surface. Capacities based on structural competence are denoted by shaded areas. Operating radius is horizontal distance from axis of rotation to center of vertical hoist line or load block. Weight of all load blocks, hooks, weight ball, slings, etc. including those on the main boom is considered part of the jib load. Maximum capacity on 1-1/8" - 6x25 IPS, IWRC is 28,300 lbs./line.

30 FOOT JIB	JIB POINT RADIUS: FEET	CAPACITIES IN POUNDS										JIB POINT RADIUS: FEET	
		BOOM LENGTH - FEET											
		110	120	130	140	150	160	170	180	190	200		
65*	70	40,000	40,000	40,000	40,000	40,000	40,000	40,000	40,000	40,000	40,000	40,000	65*
	75	36,600	36,100	35,800	35,300	34,900	34,400	34,100	33,700	33,300	32,800	75	
	80	33,400	32,800	32,600	32,100	31,600	31,100	30,800	30,400	30,000	29,500	80	
	85	30,600	30,000	29,800	29,200	28,800	28,300	28,000	27,500	27,100	26,600	85	
90	95	28,100	27,500	27,300	26,700	26,300	25,800	25,500	25,000	24,600	24,100	90	
	100	25,900	25,300	25,100	24,500	24,100	23,600	23,300	22,800	22,300	21,800	100	
	105		21,600	21,400	20,800	20,400	19,800	19,500	19,000	18,600	18,100	105	
	110			19,800	19,200	18,800	18,200	17,900	17,400	17,000	16,500	110	
115	120			18,400	17,800	17,300	16,800	16,500	16,000	15,500	15,000	115	
	125				16,500	16,000	15,500	15,200	14,700	14,200	13,700	120	
125	130					14,800	14,300	14,000	13,500	13,000	12,500	125	
	140						13,200	12,900	12,400	11,900	11,300	130	
	145							10,900	10,400	9,900	9,400	140	
	150								8,200	7,700	7,200	150	

40 FOOT JIB	JIB POINT RADIUS: FEET	CAPACITIES IN POUNDS										JIB POINT RADIUS: FEET	
		BOOM LENGTH - FEET											
		110	120	130	140	150	160	170	180	190	200		
80*	85	30,000	30,000	30,000	30,000	30,000	30,000	30,000	30,000	30,000	30,000	30,000	80*
	90	29,500	30,000	30,000	29,900	29,500	29,000	28,700	28,200	27,800	27,400	85	
	95	28,400	28,100	27,900	27,400	26,900	26,400	26,100	25,700	25,300	24,800	90	
	100	26,400	25,900	25,600	25,100	24,700	24,200	23,900	23,500	23,000	22,500	95	
105	110	24,500	23,900	23,700	23,100	22,700	22,200	21,900	21,400	21,000	20,500	100	
	115	22,700	22,100	21,900	21,300	20,900	20,400	20,100	19,700	19,200	18,700	105	
	120	21,100	20,500	20,300	19,800	19,300	18,800	18,500	18,000	17,600	17,100	110	
	125		19,100	18,800	18,300	17,900	17,300	17,000	16,600	16,100	15,600	115	
125	130			17,500	17,000	16,500	16,000	15,700	15,200	14,800	14,300	120	
	135				15,800	15,300	14,800	14,500	14,000	13,500	13,000	125	
	140				14,700	14,200	13,700	13,300	12,900	12,400	11,900	130	
	145					13,200	12,600	12,300	11,800	11,400	10,900	135	
145	150						11,700	11,400	10,900	10,400	9,900	140	
	150								9,200	8,700	8,200	150	

50 FOOT JIB	JIB POINT RADIUS: FEET	CAPACITIES IN POUNDS										JIB POINT RADIUS: FEET	
		BOOM LENGTH - FEET											
		110	120	130	140	150	160	170	180	190	200		
100*	105	20,000	20,000	20,000	20,000	20,000	20,000	20,000	20,000	20,000	20,000	20,000	100*
	110	20,000	20,000	20,000	20,000	20,000	20,000	20,000	20,000	20,000	19,900	105	
	115	20,000	20,000	20,000	20,000	19,900	19,400	19,100	18,700	18,300	17,900	110	
	120	18,800	18,300	18,000	17,500	17,100	16,600	16,300	15,800	15,400	15,000	115	
120	125		17,100	16,800	16,300	15,900	15,300	15,000	14,600	14,200	13,800	120	
	130			15,700	15,200	14,700	14,200	13,900	13,400	13,000	12,600	125	
	135				14,100	13,700	13,200	12,900	12,400	12,000	11,600	130	
	140				13,200	12,700	12,200	11,900	11,400	11,000	10,600	135	
140	145					11,800	11,300	11,000	10,500	10,100	9,700	140	
	150						10,400	10,100	9,700	9,200	8,800	145	
	155								8,200	7,700	7,300	150	
	160											155	

60 FOOT JIB	JIB POINT RADIUS: FEET	CAPACITIES IN POUNDS										JIB POINT RADIUS: FEET	
		BOOM LENGTH - FEET											
		110	120	130	140	150	160	170	180	190	200		
125*	130	10,000	10,000	10,000	10,000	10,000	10,000	10,000	10,000	10,000	10,000	10,000	125*
	135		10,000	10,000	10,000	10,000	10,000	10,000	10,000	10,000	10,000	10,000	130
	140			10,000	10,000	10,000	10,000	10,000	10,000	10,000	10,000	10,000	135
	145				10,000	10,000	10,000	10,000	10,000	10,000	10,000	10,000	140
145	150					10,000	10,000	10,000	10,000	10,000	9,600	145	
	155						10,000	10,000	9,700	9,300	8,900	150	
	160							9,300	9,000	8,500	8,100	155	
	165								8,300	7,800	7,400	160	
165	170								7,200	6,700	6,300	165	
	170											170	

* These capacities apply for ALL lesser radii obtainable.

JIB LIFTING CAPACITIES

MEETS
ANSI B30.5
REQUIREMENTS

4000W

**JIB NO. 123 WITH 12'6" STRUT
NO. 22 BOOM WITH OPEN THROAT TOP — INLINE OR OFFSET
24' CRAWLERS EXTENDED**

0 DEGREE JIB OFFSET ANGLE

Chart supplements boom capacity chart No. 6274-A or No. 6274-C. Capacities are for freely suspended loads based on tipping, strength of structural components or other factors. Crane operator judgment must be used to allow for dynamic load effects of swinging, hoisting or lowering, travel, as well as adverse operating conditions & physical machine depreciation.

Capacities do not exceed 75% of static tipping load with machine on firm level surface. Capacities based on structural competence are denoted by shaded areas. Operating radius is horizontal distance from axis of rotation to center of vertical hoist line or load block. Weight of all load blocks, hooks, weight ball, slings, etc. including those on the main boom is considered part of the jib load. Maximum capacity on 1-1/8" — 6x25 IPS, IWRC is 28,300 lbs./line.

30 FOOT JIB	JIB POINT RADIUS: FEET	CAPACITIES IN POUNDS										JIB POINT RADIUS: FEET		
		BOOM LENGTH — FEET												
		110	120	130	140	150	160	170	180	190	200			
60 *	65	40,000	40,000	40,000	40,000	40,000	40,000	40,000	40,000	40,000	40,000	40,000	40,000	60 *
	70	39,200	38,500	38,200	37,600	37,100	36,500	36,100	35,500	35,100	34,500	34,500	70	
	75	35,500	34,800	34,500	33,900	33,400	32,800	32,400	31,900	31,400	30,800	30,800	75	
	80	32,400	31,700	31,400	30,800	30,300	29,700	29,300	28,800	28,300	27,700	27,700	80	
	85	29,700	29,000	28,700	28,100	27,500	26,900	26,600	26,000	25,500	24,900	24,900	85	
90	90	27,300	26,600	26,300	25,700	25,100	24,500	24,200	23,600	23,100	22,500	22,500	90	
	95	25,200	24,500	24,200	23,600	23,000	22,400	22,100	21,500	21,000	20,400	20,400	95	
	100	23,300	22,600	22,300	21,700	21,200	20,500	20,200	19,600	19,100	18,500	18,500	100	
	110	23,600	22,900	22,600	22,000	21,500	20,800	20,500	19,900	19,400	18,800	18,800	110	
	120	17,500	16,800	16,500	15,900	15,300	14,700	14,300	13,800	13,300	12,700	12,700	120	
130	130		14,600	14,300	13,700	13,100	12,500	12,100	11,600	11,100	10,400	10,400	130	
	140			12,400	11,800	11,300	10,600	10,300	9,700	9,200	8,600	8,600	140	
	150				10,200	9,700	9,000	8,700	8,100	7,600	7,000	7,000	150	
	160					8,300	7,600	7,300	6,700	6,200	5,600	5,600	160	
	170						6,400	6,100	5,500	5,000	4,400	4,400	170	

40 FOOT JIB	JIB POINT RADIUS: FEET	CAPACITIES IN POUNDS										JIB POINT RADIUS: FEET	
		BOOM LENGTH — FEET											
		110	120	130	140	150	160	170	180	190	200		
75 *	75 *	30,000	30,000	30,000	30,000	30,000	30,000	30,000	30,000	30,000	30,000	30,000	75 *
	80	30,000	30,000	30,000	30,000	30,000	29,900	29,600	29,000	28,500	27,900	27,900	80
	85	29,900	29,300	29,000	28,300	27,800	27,200	26,800	26,300	25,800	25,200	25,200	85
	90	27,600	26,900	26,600	25,900	25,400	24,800	24,400	23,900	23,400	22,800	22,800	90
	95	25,400	24,800	24,500	23,800	23,300	22,700	22,300	21,800	21,300	20,700	20,700	95
100	100	23,600	22,900	22,600	22,000	21,500	20,800	20,400	19,900	19,400	18,800	18,800	100
	110	20,400	19,700	19,400	18,700	18,200	17,600	17,200	16,700	16,100	15,600	15,600	110
	120	17,700	17,100	16,700	16,100	15,600	15,000	14,600	14,000	13,500	12,900	12,900	120
	130	15,600	14,900	14,600	13,900	13,400	12,800	12,400	11,800	11,300	10,700	10,700	130
	140		13,000	12,700	12,100	11,500	10,900	10,500	10,000	9,400	8,800	8,800	140
150	150			11,100	10,500	9,900	9,300	8,900	8,400	7,800	7,200	7,200	150
	160				9,100	8,500	7,900	7,500	7,000	6,400	5,800	5,800	160
	170					7,300	6,700	6,300	5,700	5,200	4,600	4,600	170
	180							6,700	6,300	5,700	5,200	4,600	180

50 FOOT JIB	JIB POINT RADIUS: FEET	CAPACITIES IN POUNDS										JIB POINT RADIUS: FEET	
		BOOM LENGTH — FEET											
		110	120	130	140	150	160	170	180	190	200		
95 *	95 *	20,000	20,000	20,000	20,000	20,000	20,000	20,000	20,000	20,000	20,000	20,000	95 *
	100	20,000	20,000	20,000	20,000	20,000	20,000	20,000	20,000	20,000	19,700	19,700	100
	105	20,000	20,000	20,000	20,000	20,000	20,000	19,500	19,100	18,500	18,000	18,000	105
	110	20,000	20,000	19,700	19,100	18,500	17,900	17,500	17,000	16,500	16,000	16,000	110
	120	18,000	17,400	17,000	16,400	15,900	15,300	14,900	14,400	13,800	13,300	13,300	120
130	130	15,800	15,200	14,800	14,200	13,700	13,100	12,700	12,100	11,600	11,100	11,100	130
	140	14,000	13,300	13,000	12,300	11,800	11,200	10,800	10,300	9,700	9,200	9,200	140
	150		11,700	11,400	10,700	10,200	9,600	9,200	8,700	8,100	7,600	7,600	150
	160			10,000	9,300	8,800	8,200	7,800	7,300	6,700	6,200	6,200	160
	170				8,100	7,600	7,000	6,600	6,000	5,500	5,000	5,000	170
180	180					6,500	5,900	5,500	4,900	4,400	3,900	3,900	180
	190							4,600	4,000	3,500	3,000	3,000	190

60 FOOT JIB	JIB POINT RADIUS: FEET	CAPACITIES IN POUNDS										JIB POINT RADIUS: FEET	
		BOOM LENGTH — FEET											
		110	120	130	140	150	160	170	180	190	200		
135 *	135 *	10,000	10,000	10,000	10,000	10,000	10,000	10,000	10,000	10,000	10,000	10,000	135 *
	140	10,000	10,000	10,000	10,000	10,000	10,000	10,000	10,000	10,000	9,900	9,900	140
	145	10,000	10,000	10,000	10,000	10,000	10,000	10,000	9,900	9,800	9,100	9,100	145
	150	10,000	10,000	10,000	10,000	10,000	10,000	9,800	9,400	8,800	8,300	8,300	150
	155		10,000	10,000	10,000	9,700	9,000	8,700	8,100	7,600	7,000	7,000	155
160	160		10,000	10,000	9,500	9,000	8,400	8,000	7,400	6,900	6,300	6,300	160
	165			9,500	8,900	8,400	7,700	7,400	6,800	6,300	5,700	5,700	165
	170			8,900	8,300	7,800	7,100	6,800	6,200	5,700	5,100	5,100	170
	180				7,200	6,700	6,100	5,700	5,100	4,600	4,000	4,000	180
	190					6,700	6,100	5,700	5,100	4,700	4,100	4,100	190

* These capacities apply for ALL lesser radii obtainable.

MANITOWOC ENGINEERING CO.

(A division of The Manitowoc Company, Inc.) Manitowoc, Wisconsin 54220



JIB LIFTING CAPACITIES

MEETS
ANSI B30.5
REQUIREMENTS

4000W

**JIB NO. 123 WITH 12'6" STRUT
NO. 22 BOOM WITH OPEN THROAT TOP - INLINE OR OFFSET
24' CRAWLERS EXTENDED**

10 DEGREE JIB OFFSET ANGLE

Chart supplements boom capacity chart No. 6274-A or No. 6274-C. Capacities are for freely suspended loads based on tipping, strength of structural components or other factors. Crane operator judgment must be used to allow for dynamic load effects of swinging, hoisting or lowering, travel, as well as adverse operating conditions & physical machine depreciation.

Capacities do not exceed 75% of static tipping load with machine on firm level surface. Capacities based on structural competence are denoted by shaded areas. Operating radius is horizontal distance from axis of rotation to center of vertical hoist line or load block. Weight of all load blocks, hooks, weight ball, slings, etc. including those on the main boom is considered part of the jib load. Maximum capacity on 1-1/8" - 6x25 IPS, IWRC is 28,300 lbs./line.

30 FOOT JIB	JIB POINT RADIUS: FEET	CAPACITIES IN POUNDS										JIB POINT RADIUS: FEET	
		BOOM LENGTH - FEET											
		110	120	130	140	150	160	170	180	190	200		
65*	70	40,000	40,000	40,000	40,000	40,000	40,000	40,000	40,000	40,000	40,000	40,000	65*
	75	39,800	39,200	38,900	38,400	37,900	37,400	37,000	36,600	36,100	35,600	70	
	80	36,100	35,500	35,200	34,700	34,200	33,600	33,300	32,800	32,400	31,800	75	
	85	32,900	32,300	32,000	31,500	31,000	30,400	30,100	29,600	29,100	28,600	80	
	90	30,100	29,500	29,200	28,700	28,200	27,600	27,300	26,800	26,300	25,800	85	
95	100	27,700	27,100	26,800	26,200	25,700	25,200	24,800	24,300	23,900	23,300	90	
	105	25,600	24,900	24,700	24,100	23,600	23,000	22,700	22,200	21,700	21,200	95	
	110	23,600	23,000	22,700	22,200	21,700	21,100	20,800	20,200	19,800	19,200	100	
	120	21,900	21,300	21,000	20,400	19,900	19,400	19,000	18,500	18,000	17,500	105	
	130	20,400	19,800	19,500	18,900	18,400	17,800	17,500	17,000	16,500	15,900	110	
140	150		17,100	16,800	16,200	15,700	15,100	14,800	14,300	13,800	13,200	120	
	160			14,500	13,900	13,400	12,800	12,500	12,000	11,500	10,900	130	
	170					11,500	10,900	10,600	10,100	9,600	9,000	140	
							9,300	9,000	8,400	7,900	7,300	150	
								7,500	7,000	6,500	5,900	160	
								5,700	5,200	4,700	170		

40 FOOT JIB	JIB POINT RADIUS: FEET	CAPACITIES IN POUNDS										JIB POINT RADIUS: FEET	
		BOOM LENGTH - FEET											
		110	120	130	140	150	160	170	180	190	200		
75*	80	30,000	30,000	30,000	30,000	30,000	30,000	30,000	30,000	30,000	30,000	30,000	75*
	85	30,000	30,000	29,700	29,100	28,700	28,100	27,800	27,300	26,800	26,300	80	
	90	28,100	27,500	27,200	26,700	26,200	25,700	25,300	24,800	24,400	23,800	85	
	95	26,000	25,400	25,100	24,500	24,000	23,500	23,100	22,600	22,200	21,600	90	
	100	24,000	23,400	23,100	22,600	22,100	21,500	21,200	20,700	20,200	19,700	100	
105	110	22,300	21,700	21,400	20,800	20,400	19,800	19,500	19,000	18,500	17,900	105	
	120	20,800	20,100	19,900	19,300	18,800	18,200	17,900	17,400	16,900	16,400	110	
	130	18,100	17,400	17,200	16,600	16,100	15,500	15,200	14,700	14,200	13,600	120	
	140		15,200	14,900	14,300	13,800	13,200	12,900	12,400	11,900	11,300	130	
	150			13,000	12,400	11,900	11,300	11,000	10,400	9,900	9,400	140	
160	170					10,200	9,600	9,300	8,800	8,300	7,700	150	
							8,200	7,900	7,300	6,800	6,300	160	
								6,800	6,100	5,600	5,000	170	
									5,000	4,500	4,000	180	

50 FOOT JIB	JIB POINT RADIUS: FEET	CAPACITIES IN POUNDS										JIB POINT RADIUS: FEET	
		BOOM LENGTH - FEET											
		110	120	130	140	150	160	170	180	190	200		
100*	105	20,000	20,000	20,000	20,000	20,000	20,000	20,000	20,000	20,000	20,000	20,000	100*
	110	20,000	20,000	20,000	20,000	20,000	20,000	20,000	20,000	20,000	20,000	20,000	105
	115	19,700	19,200	18,900	18,300	17,800	17,300	16,900	16,400	16,000	15,500	15,000	110
	120	18,400	17,900	17,600	17,000	16,500	16,000	15,600	15,100	14,600	14,100	13,600	115
	125	17,300	16,700	16,400	15,800	15,300	14,800	14,400	13,900	13,400	12,900	12,400	120
130	140	16,200	15,600	15,300	14,700	14,200	13,700	13,300	12,800	12,300	11,800	11,300	125
	150		13,600	13,300	12,700	12,200	11,700	11,400	10,900	10,400	9,900	9,400	130
	160			11,700	11,100	10,600	10,000	9,700	9,200	8,700	8,200	7,700	135
	170					9,200	8,600	8,200	7,700	7,200	6,700	6,200	140
	180						7,300	7,000	6,500	6,000	5,500	5,000	145
							5,800	5,300	4,800	4,300	3,800	150	

60 FOOT JIB	JIB POINT RADIUS: FEET	CAPACITIES IN POUNDS										JIB POINT RADIUS: FEET	
		BOOM LENGTH - FEET											
		110	120	130	140	150	160	170	180	190	200		
140*	145	10,000	10,000	10,000	10,000	10,000	10,000	10,000	10,000	10,000	10,000	10,000	140*
	150		10,000	10,000	10,000	10,000	10,000	10,000	10,000	10,000	10,000	10,000	145
	155		10,000	10,000	10,000	10,000	10,000	10,000	10,000	9,500	9,000	8,500	150
	160				9,900	9,400	8,900	8,500	8,000	7,500	7,000	6,500	155
	165				9,200	8,800	8,200	7,900	7,300	6,900	6,300	5,900	160
170	175					8,100	7,600	7,200	6,700	6,300	5,800	5,400	165
	180						7,000	6,500	6,100	5,600	5,200	4,700	170
	185							6,000	5,600	5,200	4,800	4,400	175
	190							6,400	6,100	5,600	5,100	4,600	180
									4,600	4,100	3,600	3,100	185

* These capacities apply for ALL lesser radii obtainable.