



MANITOWOC ENGINEERING CO.

A division of The Manitowoc Company, Inc.

Manitowoc, Wisconsin 54220

WEIGHTS

3900 VICON®

DESCRIPTION

APPROX. WEIGHT
(IN LBS.)

LIFTCRANE - w/60' No. 8 boom, 74,000# counterweight, gantry w/folding backhitch, 20'-4" crawlers w/48" treads, split drums, ind. swing, ind. boom hoist, Vicon controlled Cummins NT-855-C310 engine, 27" dia. lagging for left drum, boom hoist rope, equalizer, telescopic air cushioned boom stop, 100 ton load block, 10 ton hook and weight ball, double sheave upper boom point, and upper wire rope guide 229,485*

UPPERWORKS - w/Vicon controlled Cummins NT-855-C310 engine, ind. boom hoist, ind. swing, split drums, and 27" dia. lagging for left drum; LESS boom, gantry and backhitch, equalizer, load block, weight ball, counterweights, telescopic air cushioned boom stop, upper wire rope guide, and catwalks. 59,640*

UPPERWORKS as above - w/gantry and folding backhitch, equalizer, boom hoist rope and carbody; LESS crawlers 94,550*

CARBODY - w/roller path, ring gear and king pin; LESS crawlers. 29,000

CRAWLERS, 20'-4" w/48" treads 25,000 each

CRAWLERS, 20'-4" w/38" treads 20,830 each

SELF-REMOVING COUNTERWEIGHTS

Inner 32,000
 Middle. 26,500
 Outer 15,500

BOOM NO. 8

Boom Butt - 30' 3,250
 Boom Top - 30' (w/lower boom point assembly). 4,075
 Upper Boom Point (double sheave). 480
 Boom Insert - 10' (w/rope guide roller assembly). 900
 Boom Insert - 20' (w/rope guide roller assembly). 1,560
 Boom Insert - 30' (w/rope guide roller assembly). 2,160
 Boom Insert - 30' (w/rope guide roller assembly and jib backstay lugs). 2,210
 Basic Pendant - 20' (2 req'd.). 185 each
 Pendant - 10' (2 per insert). 130 each
 Pendant - 20' (2 per insert). 185 each
 Pendant - 30' (2 per insert). 225 each
 Pendant Spreader Bar. 280

*Weights do not include hoist line, whip line, or fuel. For optional engines add the following weights to the upperworks of VICON machines: 1,095# for Cummins NTA-855-C380, 2,055# for Cat. D-343T and G.M. 12V-71N, 2,075# for Cat. D-343TA.

(Cont'd.)

Manitowoc Engineering Co.

WEIGHTS 3900 VICON[®] Cont'd.

DESCRIPTION

APPROX. WEIGHT
(IN LBS.)

JIB NO. 123

Jib Top - 15' (w/jib point)	695
Jib Butt - 15'	690
Jib Insert - 10'	340
Basic Pendant - 33' 3-3/4" (2 reqd.)	115 each
Pendant - 10' (2 per insert)	65 each
Jib Backstay Pendant	155 each
Jib Strut - 12'-6"	365

JIB NO. 124

Jib Top - 15' (w/jib point)	480
Jib Butt - 15'	410
Jib Insert - 10'	175
Basic Pendant - 78'-3" (Single piece pendant)	100
Pendant - 10' (2 per insert)	25 each
Jib Backstay Pendant (51' 10-1/2") (2 reqd.)	140 each
Jib Strut - 18'	385

COMPONENTS

Hook Rollers (6) w/Shafts	640
Light Plant 3.5 KW (Mounted Outside Cab)	1,170
Catwalk - Right, Left, Front and Rear w/Rails	1,925
Lagging - 27" Dia. w/1" Grooves For Left Drum	605
Boom Hoist Rope - 10 Part - 470' 7/8" - 6x26	660
Wire Rope Guide Assembly (Upper)	270
Rope Guide Roller Assembly	40
10-Part Gantry w/Folding Backhitch	4,200
Equalizer	1,050
Hoist Line - 1" - 6x25	1.8 lbs./ft.
Whip Line - 1" - 6x25	1.8 lbs./ft.
10 Ton Swivel Hook and Weight Ball	610
100 Ton Hook Block Assembly	1,230
Boom Stop - Telescopic Air Cushioned	650

NOTE: The above weights may fluctuate up or down 5% due to manufacturing tolerances.

MANITOWOC ENGINEERING CO.

A Division of The Manitowoc Company, Inc. Manitowoc, Wisconsin 54220



LIFTCRANE CAPACITIES

MEETS
ANSI B30.5
REQUIREMENTS

3900
CRAWLER

BOOM NO. 8 WITH OPEN THROAT TOP 14,000 LB. COUNTERWEIGHT

LIFTING CAPACITIES: Capacities for various boom lengths and operating radii are for freely suspended loads and do not exceed **75%** of a static tipping load. Capacities based on structural competence are shown by shaded areas.

Upper boom point capacity (whip line) for single part line is 22,500 lbs. (20,000 lbs. when rear auxiliary drum is used). In all cases, upper boom point capacities cannot exceed those listed for the main boom capacity.

Capacities are shown in pounds. Weight of jib, (see chart A), all load blocks, hooks, weight ball, slings, hoist lines, etc., beneath boom and jib point sheaves, is to be considered part of the main boom load. Boom is not to be lowered beyond radii where combined weights are greater than rated capacity. Where no capacity is shown, operation is not intended or approved. See boom raising capability chart.

OPERATING CONDITIONS: Machine to operate in a level position on a firm surface with gantry in working position and be rigged in accordance with and under conditions referred to in rigging drawing No. 48029 or No. 48237 and load line specification chart No. 4899.

Crane operator judgment must be used to allow for dynamic load effects of swinging, hoisting or lowering, travel, wind conditions, as well as adverse operating conditions and physical machine depreciation.

OPERATING RADIUS: Operating radius is the horizontal distance from the axis of rotation to the center of vertical hoist line or load block with the load freely suspended. Add 11" to boom point radius for radius of sheave when using single part hoist line.

Boom angle is the angle between horizontal and centerline of boom butt and inserts and is an indication of operating radius. In all cases, operating radius shall govern capacity.

BOOM POINT ELEVATION: Boom point elevation, in feet, is the vertical distance from ground level to centerline of boom point shaft.

MACHINE EQUIPMENT: Machine equipped with 20'4" crawlers, 38" or 48" treads, 15' retractable gantry, 10 or 12 part boom hoist reeving, two 1-1/2" boom pendants, 1st cwt. = 32,000 lbs., 2nd cwt. = 26,500 lbs., 3rd cwt. = 15,500 lbs.

No. Parts of Line	1	2	3	4	5
Maximum Load - lbs.	22,500	45,000	67,500	90,000	112,500
No. Parts of Line	6	7	8	9	
Maximum Load - lbs.	135,000	157,500	180,000	200,000	

LOAD LINE: 1" — 6x25 Filler Wire, Improved Plow Steel, Regular Lay, IWRC. Minimum Breaking Strength 44.9 Ton. (Approx. Weight Per Ft. in Lbs. 1.85)
WHIP LINE: 1" — 6x25 Filler Wire, Improved Plow Steel, Regular Lay, IWRC. Minimum Breaking Strength 44.9 Ton. Maximum Load — 22,500 lbs. per Line. (Approx. Weight Per Ft. in Lbs. 1.85)

OVER FRONT OF BLOCKED CRAWLERS			OVER SIDE OF CRAWLERS		
Bo. Lgth.	Jib No. 123	Jib No. 124	Bo. Lgth.	Jib No. 123	Jib No. 124
210'	—	—	190'	—	—
200'	—	—	180'	—	30'
190'	30'	60'	170'	30'	60'
180'	50'	60'	160'	60'	60'
170'	60'	60'			

Load block, hook and weight ball on ground at start.

Jib Lgth.	Jib No. 123	Jib No. 124
30'	2,500 lb.	1,800 lb.
40'	3,100 lb.	2,050 lb.
50'	3,700 lb.	2,300 lb.
60'	4,400 lb.	2,500 lb.

For jib capacities, consult jib chart.

Boom Lgth.: Feet	Oper. Rad.: Feet	Boom Ang.: Deg.	Boom Point: Elev.	Capacity:	Boom Lgth.: Feet	Oper. Rad.: Feet	Boom Ang.: Deg.	Boom Point: Elev.	Capacity:	Boom Lgth.: Feet	Oper. Rad.: Feet	Boom Ang.: Deg.	Boom Point: Elev.	Capacity:			
15	79.1	65.6	200,000	200,000	7	40	58.7	66.5	51,100	18	80.8	95.5	162,600	19	81.2	105.5	148,400
16	78.1	65.4	200,000	200,000	45	53.8	63.1	43,800	19	80.2	95.3	148,500	20	80.6	105.3	136,500	
17	77.1	65.1	180,200	180,200	50	48.5	59.1	38,100	20	79.5	95.2	136,600	22	79.4	105.0	117,500	
18	76.1	64.9	163,400	163,400	55	42.8	54.2	33,700	22	78.2	94.8	117,600	24	78.2	104.6	103,000	
19	75.2	64.7	149,400	149,400	60	36.4	48.2	30,000	24	76.9	94.3	103,100	26	77.1	104.1	91,500	
20	74.2	64.4	137,500	137,500	65	28.7	40.3	27,100	26	75.6	93.8	91,700	28	75.9	103.6	82,300	
22	72.2	63.8	118,600	118,600	70	18.5	28.9	24,500	28	74.3	93.3	82,400	30	74.7	103.1	74,600	
24	70.1	63.1	104,100	104,100	16	81.1	85.7	200,000	30	73.0	92.7	74,700	32	73.5	102.5	68,200	
26	68.1	62.3	92,700	92,700	17	80.4	85.5	179,700	32	71.6	92.1	68,300	34	72.3	101.9	62,700	
28	66.0	61.5	83,400	83,400	18	79.6	85.4	162,900	34	70.3	91.4	62,800	36	71.1	101.3	58,000	
30	63.9	60.5	75,800	75,800	19	78.9	85.2	148,800	36	68.9	90.6	58,100	38	69.9	100.6	53,900	
32	61.8	59.5	69,400	69,400	20	78.2	85.0	137,000	38	67.5	89.8	54,000	40	68.7	99.8	50,200	
34	59.6	58.4	63,900	63,900	22	76.7	84.5	118,000	40	66.2	89.0	50,400	45	65.6	97.7	42,900	
36	57.3	57.2	59,200	59,200	24	75.2	84.0	103,500	45	62.6	86.6	43,000	50	62.4	95.3	37,200	
38	55.0	55.8	55,100	55,100	26	73.8	83.5	92,000	50	59.0	83.8	37,400	55	59.1	92.5	32,800	
40	52.7	54.4	51,500	51,500	28	72.3	82.9	82,800	55	55.2	80.6	32,900	60	55.7	89.3	29,100	
45	46.4	50.1	44,200	44,200	30	70.8	82.2	75,100	60	51.2	76.8	29,300	65	52.1	85.6	26,100	
50	39.4	44.7	38,500	38,500	32	69.2	81.5	68,700	65	47.0	72.5	26,300	70	48.4	81.5	23,600	
55	31.1	37.6	34,100	34,100	34	67.7	80.7	63,200	70	42.5	67.4	23,800	75	44.5	76.7	21,500	
60	20.0	27.2	30,500	30,500	36	66.1	79.8	58,500	75	37.5	61.5	21,600	80	40.2	71.2	19,600	
15	80.6	75.7	200,000	200,000	38	64.6	78.9	54,400	80	31.9	54.3	19,800	85	35.5	64.8	18,000	
16	79.8	75.6	200,000	200,000	38	63.0	77.9	50,800	85	25.3	45.1	18,200	90	30.3	57.0	16,600	
17	78.0	75.2	179,900	179,900	45	58.9	75.1	43,500	90	16.3	31.9	16,700	95	24.0	47.3	15,300	
18	78.1	75.2	163,100	163,100	50	54.6	71.8	37,800	100	15.5	28.5	15,300					
19	77.3	74.9	149,100	149,100	55	50.0	68.0	33,900									
20	76.5	74.7	137,200	137,200	60	45.2	63.4	29,700									
22	74.8	74.2	118,200	118,200	65	39.9	58.0	26,700									
24	73.1	73.6	103,700	103,700	70	33.9	51.3	24,200									
26	71.4	73.0	92,300	92,300	75	26.9	42.8	22,100									
28	69.6	72.3	83,000	83,000	80	17.3	30.5	20,200									
30	67.9	71.5	75,400	75,400													
32	66.1	70.6	69,000	69,000													
34	64.3	69.7	63,500	63,500													
36	62.5	68.7	58,800	58,800													
38	60.6	67.6	54,700	54,700													

Capacities continued on reverse side.

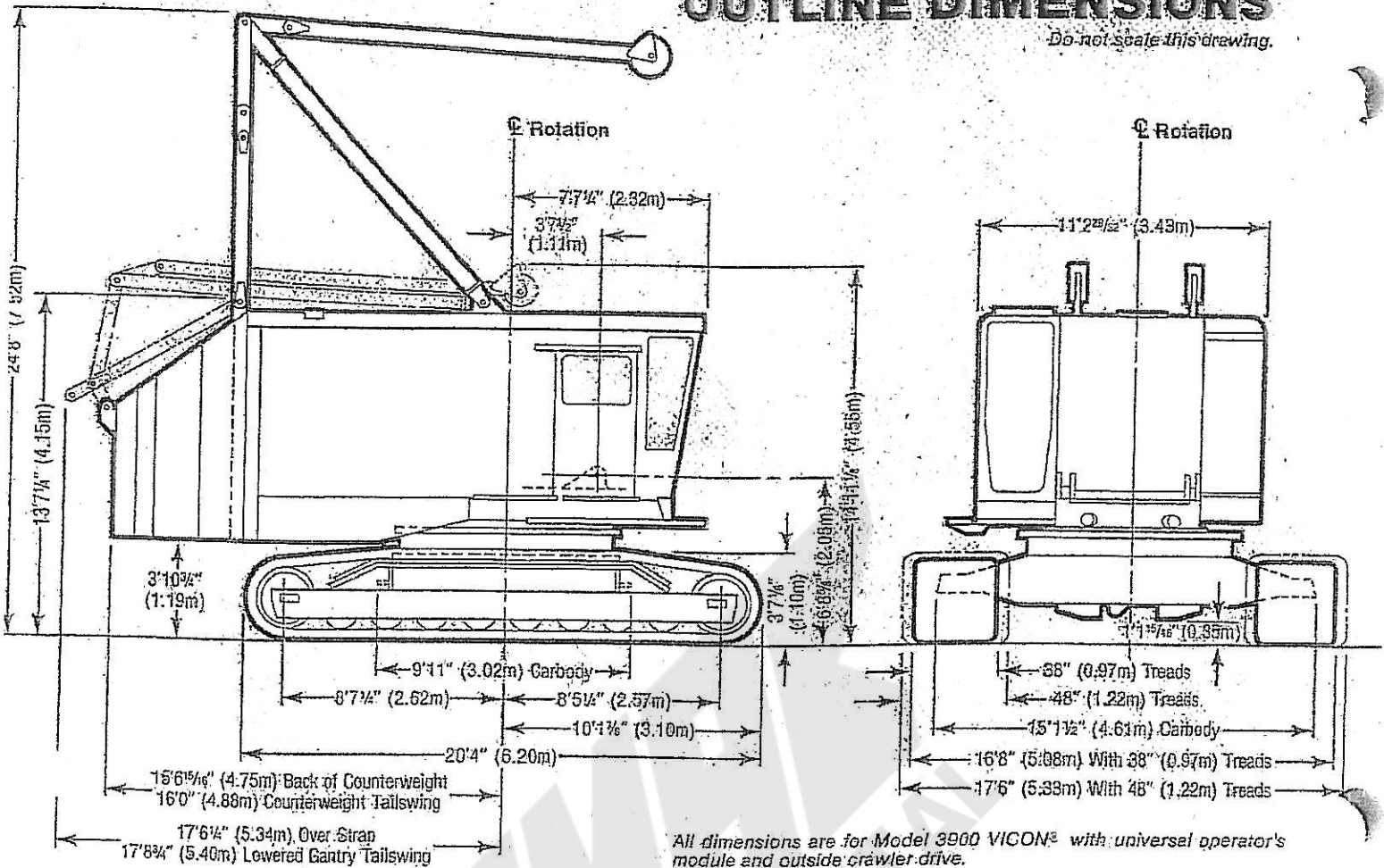
For a specific crane serial number chart, see the Manitowoc Engineering Co. website at www.manitowoc.com or contact your local Manitowoc distributor.

SEE CONDITIONS ON REVERSE SIDE

Boom Lgth.: Feet	Oper. Rad.: Feet	Boom Ang.: Deg.	Boom Point: Elev.	Capacity:	Boom Lgth.: Feet	Oper. Rad.: Feet	Boom Ang.: Deg.	Boom Point: Elev.	Capacity:	Boom Lgth.: Feet	Oper. Rad.: Feet	Boom Ang.: Deg.	Boom Point: Elev.	Capacity:	Boom Lgth.: Feet	Oper. Rad.: Feet	Boom Ang.: Deg.	Boom Point: Elev.	Capacity:
22	80.4	115.1	117.200		28	80.6	154.7	80.800		32	80.9	184.4	65.700		36	81.1	214.1	54.600	
24	79.3	114.8	102.700		30	79.9	154.3	73.100		34	80.3	184.1	60.200		38	80.6	213.8	50.400	
26	78.3	114.4	91.200		32	79.1	153.9	66.600		36	79.6	183.7	55.500		40	80.0	213.5	46.800	
28	77.2	113.9	82.000		34	78.3	153.5	61.100		38	79.0	183.3	51.300		42	78.6	212.5	39.400	
30	76.1	113.4	74.300		36	77.5	153.1	56.400		40	78.3	182.9	47.700		44	77.2	211.5	33.700	
32	75.1	112.9	67.900		38	76.8	152.7	52.300		42	76.7	181.8	40.300		46	75.8	210.3	29.200	
34	74.0	112.4	62.400		40	76.0	152.2	48.600		44	75.1	180.6	34.600		48	74.4	208.9	25.500	
36	72.9	111.8	57.700		42	74.0	150.8	41.300		46	73.4	179.2	30.100		50	73.0	207.5	22.500	
38	71.8	111.1	53.500		44	72.0	149.3	35.600		48	71.7	177.6	26.500		52	71.6	205.9	19.900	
40	70.7	110.5	49.900		46	70.0	147.6	31.100		50	70.1	175.9	23.500		54	70.1	204.2	17.800	
45	67.9	108.6	42.600		50	67.9	145.7	27.500		54	68.4	174.0	20.900		58	68.7	202.3	15.900	
50	65.1	106.4	36.900		55	65.8	143.5	24.400		56	66.6	171.9	18.800		60	67.2	200.2	14.300	
55	62.2	103.9	32.400		60	63.7	141.2	21.900		58	64.9	169.6	16.900		62	65.7	198.1	12.800	
60	59.2	101.1	28.800		65	61.6	138.6	19.800		60	63.1	167.2	15.300		64	64.2	195.7	11.600	
65	56.1	97.9	25.800		70	59.4	135.8	17.900		65	61.3	164.6	13.800		66	62.7	193.2	10.400	
70	52.9	94.4	23.300		75	57.1	132.7	16.300		70	59.5	161.7	12.600		68	61.1	190.6	9.400	
75	49.5	90.4	21.100		80	54.8	129.3	14.800		75	57.6	158.7	11.400		70	59.6	187.7	8.500	
80	46.0	85.8	19.300		85	52.5	125.6	13.600		80	55.7	155.4	10.400		72	58.0	184.7	7.700	
85	42.3	80.7	17.600		90	50.0	121.6	12.400		85	53.8	151.9	9.500		74	56.3	181.5	6.900	
90	38.3	74.8	16.200		95	47.5	117.2	11.400		90	51.8	148.1	8.700		76	54.7	178.0	6.200	
95	33.8	67.9	15.000		100	44.8	112.4	10.500		95	49.7	144.0	7.900		78	53.0	174.4	5.600	
100	28.8	59.7	13.800		105	42.1	107.1	9.700		100	47.6	139.6	7.200		80	51.3	170.5	5.000	
105	22.8	49.4	12.800		110	39.1	101.3	8.900		105	45.4	134.8	6.600		82	49.5	166.3	4.400	
22	81.2	125.2	112.500		115	36.0	94.8	8.200		110	43.1	129.7	6.000		84	47.7	161.9	3.900	
24	80.2	124.9	102.400		120	32.6	87.5	7.600		115	40.7	124.1	5.400		86	45.8	157.2	3.500	
26	79.3	124.6	90.900		125	28.9	79.0	7.000		120	38.2	118.1	4.900		88	43.9	152.2	3.000	
28	78.3	124.2	81.600		130	24.6	69.1	6.500		125	35.6	111.4	4.500		90	42.1	147.1	2.600	
30	77.3	123.7	73.900		135	19.5	56.8	6.000		130	32.8	104.1	4.000		92	40.4	141.9	2.200	
32	76.3	123.3	67.500		140	14.4	44.0	5.500		135	29.7	95.8	3.600		94	38.7	136.7	1.800	
34	75.3	122.7	62.000		145	9.3	31.3	5.000		140	26.3	86.4	3.200		96	37.0	131.5	1.400	
36	74.3	122.2	57.300		30	80.5	164.5	72.800		34	80.8	194.2	60.000		38	80.2	193.9	55.200	
38	73.4	121.6	53.200		32	79.8	164.1	66.400		36	80.2	193.9	55.200		40	79.6	193.5	51.100	
40	72.4	121.0	49.500		34	79.1	163.7	60.900		38	79.6	193.5	51.100		42	79.0	193.1	47.500	
45	69.8	119.3	42.200		36	78.3	163.3	56.200		40	79.0	193.1	47.500		44	77.4	192.1	40.100	
50	67.3	117.3	36.500		38	77.6	162.9	52.000		45	77.4	192.1	40.100		50	75.9	190.9	34.400	
55	64.7	115.1	32.000		40	76.9	162.5	48.400		55	74.3	189.6	29.900		60	72.7	188.1	26.200	
60	62.0	112.6	28.400		45	75.0	161.2	41.000		65	71.2	186.5	23.200		70	71.2	186.5	23.200	
65	59.2	109.8	25.400		50	73.2	159.8	35.300		75	69.6	184.7	20.700		75	67.9	182.7	18.500	
70	56.4	106.6	22.900		55	71.3	158.2	30.900		80	66.3	180.6	16.600		85	64.6	178.3	15.000	
75	53.5	103.1	20.700		60	69.4	156.4	27.200		85	63.0	176.9	13.600		90	63.0	175.9	13.600	
80	50.5	99.2	18.900		65	67.4	154.4	24.200		95	61.3	173.2	12.300		100	59.5	170.4	11.200	
85	47.3	94.8	17.200		70	65.5	152.2	21.700		105	57.8	167.4	10.200		105	57.8	167.4	10.200	
90	44.0	90.0	15.800		75	63.5	149.9	19.500		110	56.0	164.1	9.200		110	56.0	164.1	9.200	
95	40.4	84.4	14.500		80	61.5	147.3	17.600		115	54.1	160.6	8.400		115	54.1	160.6	8.400	
100	36.6	78.2	13.400		85	59.4	144.4	16.000		120	52.2	156.8	7.600		120	52.2	156.8	7.600	
105	32.4	70.9	12.400		90	57.3	141.3	14.600		125	50.3	152.8	6.900		125	50.3	152.8	6.900	
110	27.6	62.2	11.500		95	55.2	138.0	13.300		130	48.3	148.5	6.300		130	48.3	148.5	6.300	
115	21.9	51.3	10.700		100	53.0	134.4	12.200		135	46.3	143.9	5.700		135	46.3	143.9	5.700	
24	81.0	135.0	102.200		105	50.7	130.4	11.200		140	44.1	139.0	5.200		140	44.1	139.0	5.200	
26	80.1	134.7	90.700		110	48.3	126.2	10.300		145	41.9	133.6	4.700		145	41.9	133.6	4.700	
28	79.2	134.4	81.400		115	45.9	121.5	9.400		150	39.6	127.8	4.200		150	39.6	127.8	4.200	
30	78.3	134.0	73.700		120	43.3	116.5	8.700		155	37.2	121.5	3.800		155	37.2	121.5	3.800	
32	77.4	133.5	67.300		125	40.7	110.9	8.000		160	34.6	114.6	3.400		160	34.6	114.6	3.400	
34	76.5	133.1	61.800		130	37.8	104.8	7.300		165	31.9	106.9	3.000		165	31.9	106.9	3.000	
36	75.6	132.6	57.100		135	34.8	98.0	6.700		36	80.7	204.0	54.900		38	80.1	203.7	50.800	
38	74.7	132.0	53.000		140	31.5	90.3	6.200		40	79.5	203.3	47.100		42	78.5	202.3	39.700	
40	73.8	131.5	49.300		145	27.9	81.6	5.700		45	78.1	202.3	39.700		48	76.6	201.2	34.000	
45	71.4	129.9	42.000		150	23.8	71.3	5.200		50	76.6	201.2	34.000		55	75.1	199.9	29.500	
50	69.1	128.1	36.300		155	18.9	58.5	4.800		55	73.6	198.5	25.900		60	73.6	198.5	25.900	
55	66.7	126.1	31.800		30	81.1	174.6	67.500		65	72.1	197.0	22.900		70	70.6	195.3	20.300	
60	64.3	123.8	28.200		32	80.4	173.9	66.100		75	69.1	193.5	18.200		80	67.6	191.5	16.300	
65	61.8	121.3	25.200		34	79.7	173.2	64.600		85	66.0	189.4	14.700		90	64.4	187.0	13.200	
70	59.3	118.4	22.700		36	79.0	172.5	63.100		95	62.8	184.6	12.000		100	61.2	181.9	10.800	
75	56.7	115.3	20.500		38	78.3	173.1	61.700		105	59.5	179.1	9.800		110	57.9	176.0	8.900	
80	54.0	111.9	18.600		40	77.6	172.7	60.300		115	56.2	172.8	8.000		120	54.4	169.3	7.300	
85	51.2	108.0	17.000		45	75.9	171.5	58.000		125	52.6	165.6	6.600		130	50.8	161.7	6.000	
90	48.4	103.8	15.600		50	74.2	170.2	55.800		135	48.9	157.5	5.400		140	47.0	152.9	4.800	
95	45.3	99.1	14.300		55	72.4	168.7	53.600		140	47.0	152.9	4.800		145	45.0	148.1	4.300	
100	42.2	93.9	13.200		60	70.6	167.0	51.400		150	43.0	142.9	3.800		155	40.8	137.4	3.400	
105	38.8	88.0	12.200		65	68.8	165.2	49.200		160	38.6	131.3	3.000		160	38.6	131.3	3.000	
110	35.1	81.4	11.300		70	67.0	163.2	47.000		36	80.7	204.0	54.900		38	80.1	203.7	50.800	
115	31.0	73.7	10.400		75	65.2</													

OUTLINE DIMENSIONS

Do not scale this drawing.



All dimensions are for Model 3900 VICON[®] with universal operator's module and outside crawler drive.

POWER PLANTS

	Model	Cylinder	Bore	Stroke	Cubic Inch Displacement	Net HP @ RPM (at flywheel)
BASIC	Cummins NT-855-C310	6	5.500" (140mm)	6.000" (152mm)	855 (14,011cc)	287 @ 2,000
OPTIONAL	Cummins NTA-855-C360*	6	5.500" (140mm)	6.000" (152mm)	855 (14,011cc)	334 @ 2,000
	Caterpillar 3406B DIT	6	5.400" (137mm)	6.500" (165mm)	893 (14,634cc)	300 @ 2,000
	Caterpillar 3406B DITA*	6	5.400" (137mm)	6.500" (165mm)	893 (14,634cc)	345 @ 2,000
	Detroit Diesel 12V-71N*	12	4.250" (108mm)	5.000" (127mm)	852 (13,962cc)	363 @ 2,000

Air Compressor: 37.5 CFM (1,062 Liters).

* Recommended for Duty Cycle.

Fuel Tank Capacity: 225 Gallons (852 Liters).

For other power plants, consult factory.

DRUMS AND LAGGINGS

Application	Drum	Diameter	Drum Width	Type of Laggings	Wire Rope Size	Spooling Capacity			
						First Layer	Layers	Maximum Capacity	
LIFTCRANE	Hoist	17 1/2" (445mm)	17 3/8" (441mm)	None	1" (25mm)	77' (23.49m)	7	710' (216.55m)	
	Whip	27" (686mm)	17 3/8" (441mm)	Grooved	1" (25mm)	116' (35.38m)	2	240' (73.20m)	
	Third Drum	Rear Aux.	17" (432mm)	32 9/16" (827mm)	None	1" (25mm)	140' (42.70m)	3	467' (142.44m)
				34 15/16" (887mm)*		1" (25mm)	150' (45.75m)*	3	501' (152.81m)*
CLAMSHELL	Closing	27" (686mm)	17 3/8" (441mm)	Grooved	1 1/8" (29mm)	105' (32.03m)	3	340' (103.70m)	
	Holding	27" (686mm)	17 3/8" (441mm)	Grooved	1 1/8" (29mm)	105' (32.03m)	3	340' (103.70m)	
DRAGLINE	Drag	24" (610mm)	17 3/8" (441mm)	Grooved	1 1/4" (32mm)	83' (25.32m)	1	83' (25.32m)	
	Hoist	27" (686mm)	17 3/8" (441mm)	Grooved	1" (25mm)	116' (35.38m)	1	116' (35.38m)	

* Without catched rope

For other options, consult factory.

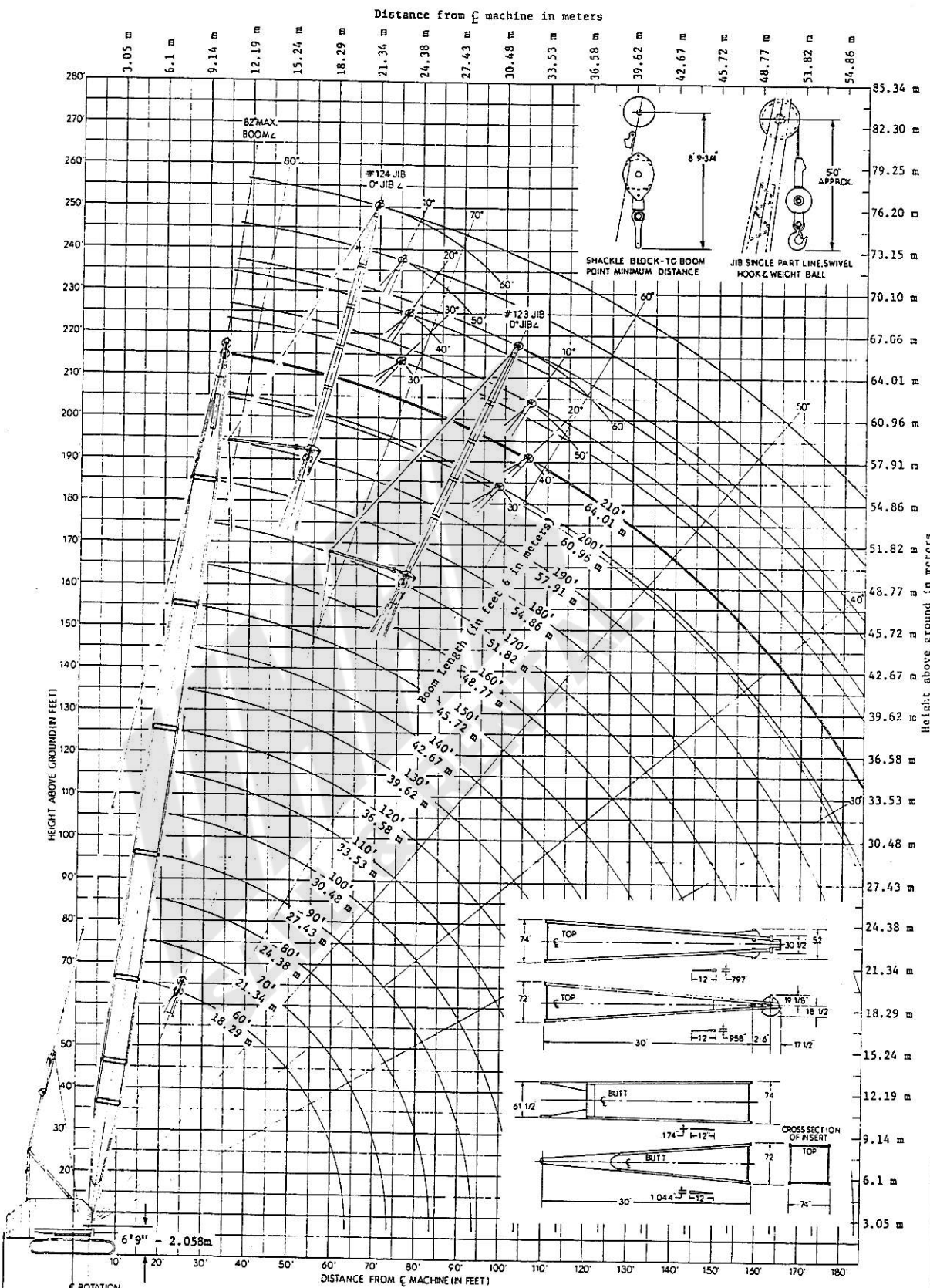
MANITOWOC ENGINEERING CO.

A Division of The Manitowoc Company, Inc.

Manitowoc, Wisconsin

65129

- NOTE 1:** This drawing is intended only as a guide to assist in job planning.
- NOTE 2:** For planning a lift, this drawing is to be used in conjunction with appropriate-
 A. Capacity Charts. C. Load Line Specifications. E. Outline Dimensions.
 B. Range Chart. D. Rigging Drawing.
- NOTE 3:** For planning lifts where clearances are limited and accuracy is desired, a detailed layout should be prepared.
- NOTE 4:** Distance of MANITOWOC load block to boom point based on 3° fleet angle or physical limitations.
- NOTE 5:** When equipped with hoist line limit switch, contact factory for load block to boom point minimum distance.
- MAXIMUM BOOM ANGLE**
 82° For No. 8 Boom w/Open Throat Top



Height above ground in meters

DO NOT SCALE THIS DRAWING

Larger Size Diagrams Available - Contact Dealer.

11-20-72

RANGE DIAGRAM-M3900-No.8 BOOM-123/124 JIB