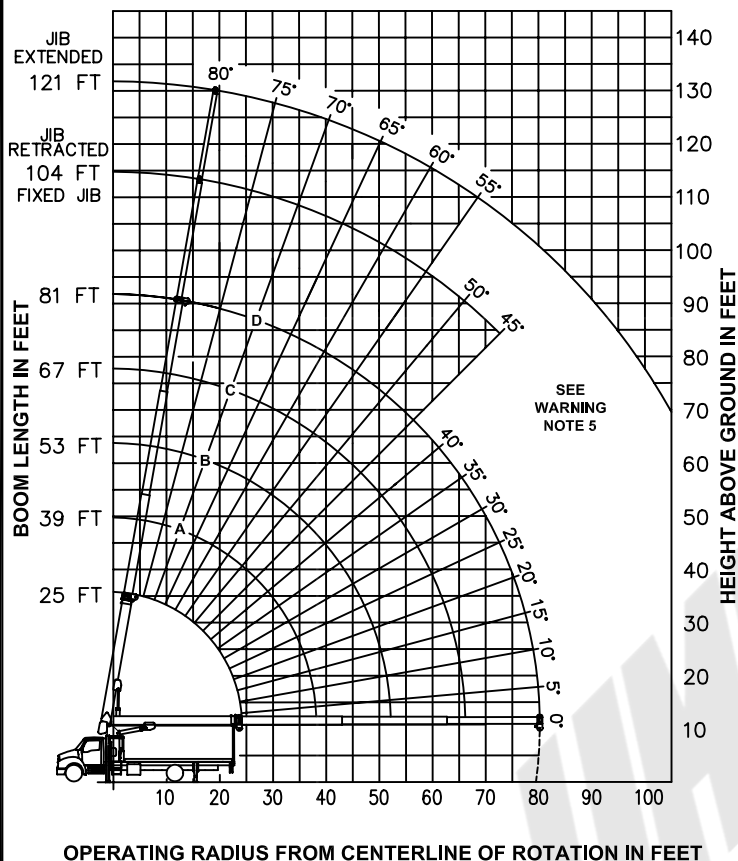


RANGE DIAGRAM



ALLOWABLE LINE PULL

1 PART LINE	2 PART LINE	3 PART LINE	4 PART LINE	<h2>WARNING</h2> <p>ANTI-TWO-BLOCK SYSTEM MUST BE IN GOOD OPERATING CONDITION BEFORE OPERATING CRANE. REFER TO OWNER'S MANUAL.</p> <p>KEEP AT LEAST 5 WRAPS OF LOAD LINE ON DRUM AT ALL TIMES.</p>
<p>OVERHAUL BALL</p>	<p>SINGLE OR DOUBLE SHEAVE LOAD BLOCK</p>	<p>SINGLE OR DOUBLE SHEAVE LOAD BLOCK</p>	<p>DOUBLE OR TRIPLE SHEAVE LOAD BLOCK</p>	
8500 LBS	17000 LBS	25500 LBS	34000 LBS	9/16" - 8 X 37 INRC (3.5:1 S.F.) 29,800 LBS. BREAKING STRENGTH
7400 LBS	14800 LBS	22200 LBS	29600 LBS	9/16" ROT RESISTANT (5.0:1 S.F.) 37000 LBS. BREAKING STRENGTH

DEDUCTIONS FROM RATED LOADS FOR LOAD HANDLING DEVICES SUPPLIED BY MANITEX.

OVERHAUL BALL ———— SEE OVERHAUL BALL MFG. NAMEPLATE
 LOAD BLOCK ———— SEE BLOCK MFG. NAMEPLATE
 HOSE REEL ———— 160 LBS
 SWING AROUND JIB ———— SEE LOAD CHART

WARNING

LIFTING OFF THE MAIN BOOM POINT WHILE THE JIB IS ERECTED IS NOT INTENDED OR APPROVED.

LOAD RATINGS IN LBS WITH OUTRIGGERS AND STABILIZERS EXTENDED

OPERATING RADIUS IN FEET	BOOM ANGLE					
	LOADED BOOM	25°	39°	53°	67°	81°
5	78	34000				
10	66	18700	76	16200		
15	52	13010	68	11640	74	10900
20	34	9790	59	8950	68	8280
25			50	7210	62	6640
30			39	5900	56	5490
35			25	4674	49	4620
40					41	3910
45					32	3240
50					18	2500
55						36
60						27
65						13
70						32
75						24

270 LBS	170 LBS	130 LBS	100 LBS	80 LBS	DEDUCTIONS FOR STOWED FIXED JIB
420 LBS	270 LBS	200 LBS	160 LBS	130 LBS	DEDUCTIONS FOR STOWED TELESCOPIC JIB

WARNING

- THE OPERATOR MUST READ AND UNDERSTAND THE OWNER'S MANUAL BEFORE OPERATING THIS CRANE.
- POSITIONING OR OPERATION OF CRANE BEYOND AREAS SHOWN ON THIS CHART IS NOT INTENDED OR APPROVED EXCEPT WHERE SPECIFIED IN OWNER'S MANUAL.
- LOADED BOOM ANGLES AT SPECIFIED BOOM LENGTHS GIVE ONLY AN APPROXIMATION OF THE OPERATING RADIUS. THE BOOM ANGLE BEFORE LOADING SHOULD BE GREATER TO ACCOUNT FOR DEFLECTIONS. DO NOT EXCEED THE OPERATING RADIUS FOR RATED LOADS.
- THE JIB RATING CHART IS BASED ON THE LOADED BOOM ANGLES OF THE MAIN BOOM AND NOT THE LOAD RADIUS.
- BOOM MUST BE FULLY RETRACTED WHEN JIB IS ERECTED, BEFORE LOWERING BOOM THRU THIS AREA.
- FOR BOOM ANGLES NOT SHOWN ON JIB LOAD RATING CHART, USE RATING OF NEXT LOWER BOOM ANGLE.
- FOR BOOM LENGTHS NOT SHOWN, USE RATING OF NEXT LONGER BOOM LENGTH. FOR RADI NOT SHOWN, USE RATING OF NEXT LONGER RADIUS.
- CRANE LOAD RATINGS ON OUTRIGGERS ARE BASED ON FREELY SUSPENDED LOADS WITH THE MACHINE LEVELED AND STANDING ON A FIRM UNIFORM SUPPORTING SURFACE. NO ATTEMPT SHALL BE MADE TO MOVE A LOAD HORIZONTALLY ON THE GROUND IN ANY DIRECTION.
- PRACTICAL WORKING LOADS DEPEND ON SUPPORTING SURFACE, WIND, AND OTHER FACTORS AFFECTING STABILITY SUCH AS HAZARDOUS SURROUNDINGS, EXPERIENCE OF PERSONNEL, AND PROPER HANDLING, ALL OF WHICH MUST BE TAKEN INTO ACCOUNT BY THE OPERATOR.
- THE MAXIMUM LOAD WHICH MAY BE TELESCOPED IS LIMITED BY HYDRAULIC PRESSURE, BOOM ANGLE, AND BOOM LUBRICATION. IT IS SAFE TO ATTEMPT TO TELESCOPE ANY LOAD WITHIN THE LIMITS OF THE LOAD RATING CHART. BOOM MUST BE FULLY RETRACTED AGAINST BOOM STOPS AT ALL TIMES WHEN LIFTING MINIMUM BOOM LENGTH CAPACITY LOADS.

INFORMATION

- DEDUCTIONS MUST BE MADE FROM RATED LOADS FOR STOWED JIB, OPTIONAL ATTACHMENTS, HOOKS, AND LOADBLOCKS (SEE DEDUCTION CHART). WEIGHTS OF SLINGS AND ALL OTHER LOAD HANDLING DEVICES SHALL BE CONSIDERED A PART OF THE LOAD.
- CRANE LOAD RATINGS WITH OUTRIGGERS ARE BASED ON OUTRIGGERS AND STABILIZERS EXTENDED AND SET WITH MACHINE LEVELED.
- LOAD RATINGS ABOVE THE HEAVY LINE ARE STRUCTURALLY LIMITED CAPACITIES AND DO NOT EXCEED 85% OF TIPPING.

DEFINITIONS

- OPERATING RADIUS IS THE HORIZONTAL DISTANCE FROM THE AXIS OF ROTATION TO THE CENTER OF THE VERTICAL HOIST LINE OR TACKLE WITH LOAD APPLIED.
- LOADED BOOM ANGLE AS SHOWN IN THE COLUMN HEADED BY \angle IS THE INCLUDED ANGLE BETWEEN THE HORIZONTAL AND LONGITUDINAL AXES OF THE BOOM BASE AFTER LIFTING RATED LOAD AT RATED RADIUS.

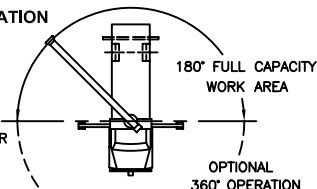
JIB LOAD RATINGS WITH OUTRIGGERS AND STABILIZERS EXTENDED

FIXED JIB		TELESCOPIC JIB	
BOOM LENGTH	JIB LENGTH FOR ALL BOOM LENGTHS	BOOM LENGTH	JIB LENGTH FOR ALL BOOM LENGTHS
23 FT	23 FT	23 FT	40 FT
3300	3200	2000	1600
2700	2600	1200	950
2200	2100	700	550
1700	1600	900	700
1300	1200	600	700
1000	900	550	550
800	700		
650	550		

AREA OF OPERATION

LINE THROUGH CENTERLINE OF ROTATION

A FRONT CENTER STABILIZER IS REQUIRED FOR 360° OPERATION



Manitex

MODELS
1718C & 1718T

CRANE MEETS ANSI B30.5 REQUIREMENTS

7300086-003 NR