

LG 1200

Gittermast-Autokran – Technische Daten

Truck Crane – Technical Data

Camion Grue –

Caractéristiques Techniques

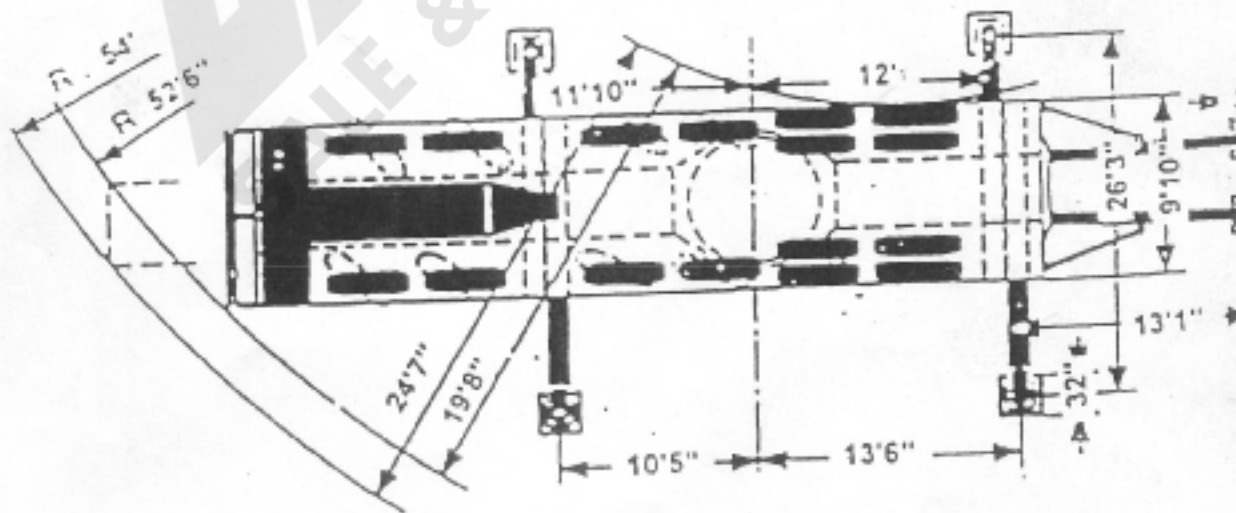
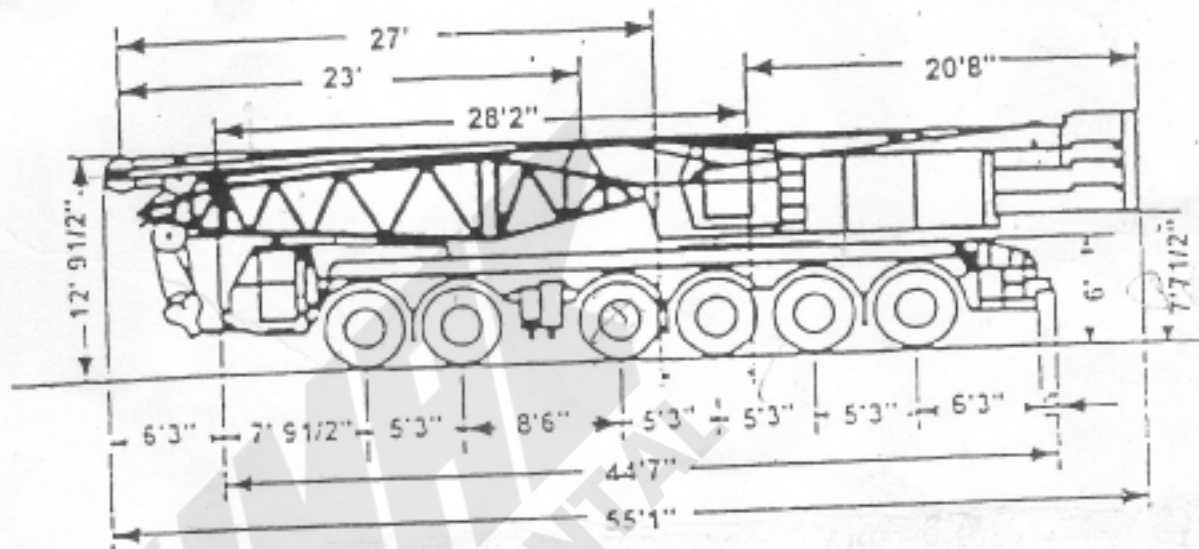
WMA
SALE & RENTAL



LIEBHERR

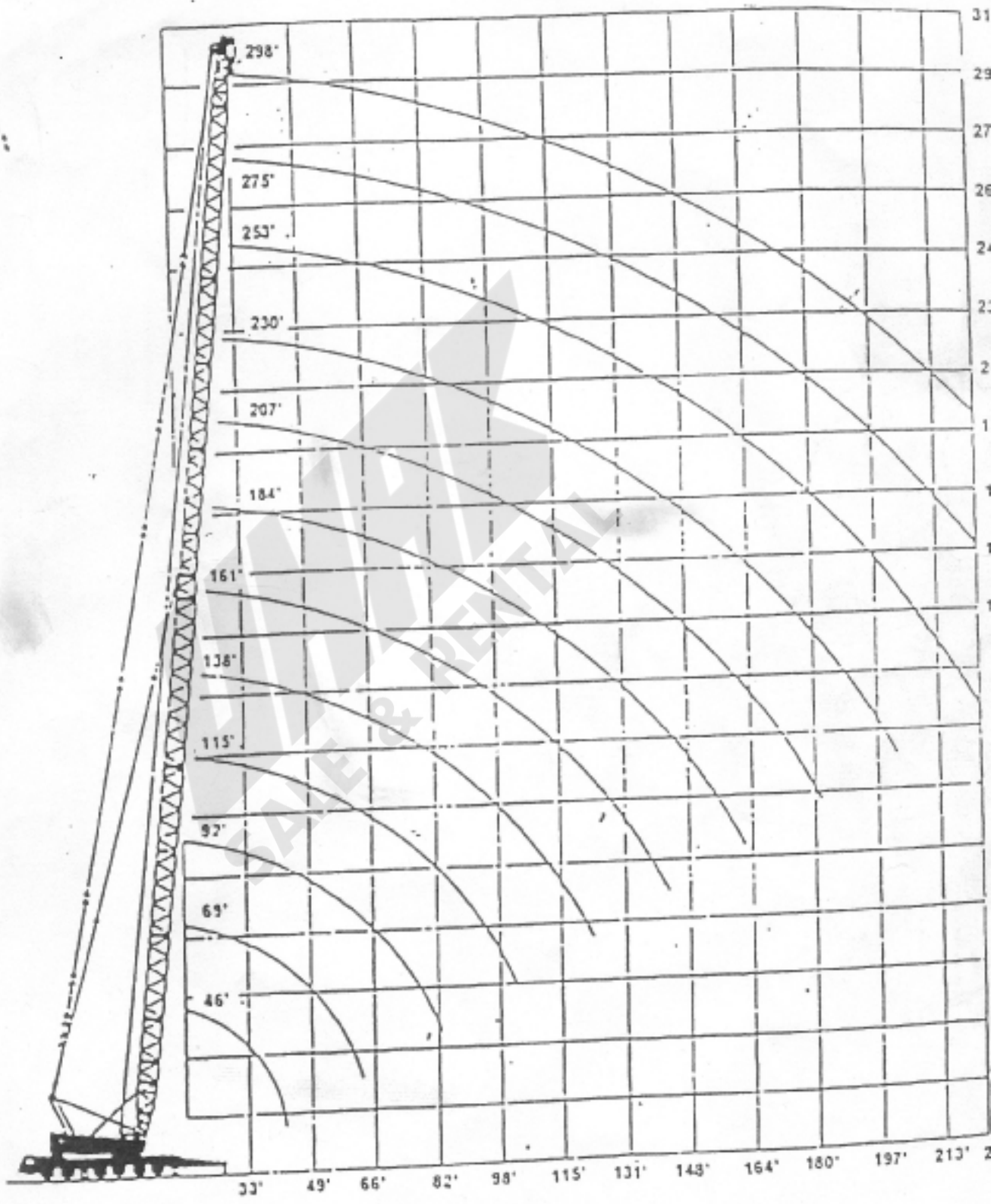
LIEBHERR LG-1200

Carrier: 12x8x8 (6-axles; 4-axle drive; 4-axle steer)

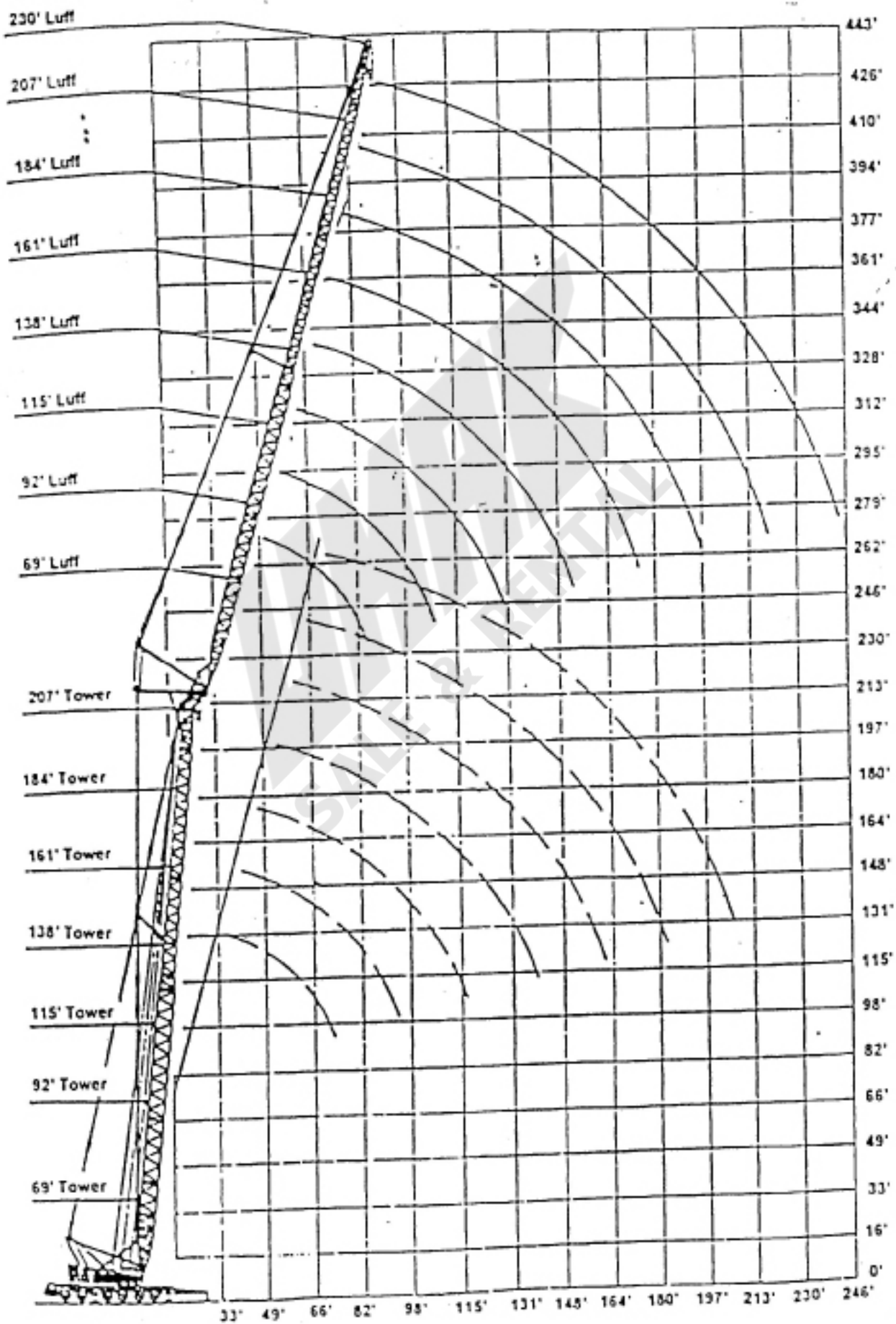


Transport Weight.....	158,700-lbs
Axle Weight.....	26,450-lbs per axle
Line Pull.....	22,000-lbs

LIEBHERR LG-1200



LIEBHERR LG-1200



LIEBHERR LG 1200 250 TON TRUCK CRANE

S-14 46 FT MAIN BOOM 85 %

RADIUS BOOM		I (full cwt)		II (full cwt)		III (1/2 cwt)		IV (1/2 cwt)		V (no cwt)		VI (no cwt)		TIP HEIGHT
FEET	ANGLE	360 deg	REAR	360 degree	REAR	360 degree	REAR	360 degree	REAR	360 degree	REAR	360 degree	REAR	FEET
13	85	499,714	499,714											47
15	81	449,743	449,743	367,290	399,771	294,831	312,321							47
16	79	424,757	424,757	332,310	362,293	258,602	267,347							46
20	75	364,791	364,791	274,843	297,330	202,384	207,381							45
21	73	339,806	339,806	254,854	269,846	182,396	182,396							45
23	70	317,318	317,318	232,367	249,857	159,908	164,906							44
26	66	279,840	279,840	202,384	218,625	127,427	132,424							42
30	61	249,857	249,857	177,398	193,639	99,943	109,937							41
33	56	224,871	224,871	157,410	173,651	82,453	94,946							38
39	45	184,894	184,894	126,178	139,920	59,966	69,960							32
46	30	159,908	159,908	102,441	112,436	46,224	54,969							23

S-21 69 FT MAIN BOOM 85 %

RADIUS BOOM		I (full cwt)		II (full cwt)		III (1/2 cwt)		IV (1/2 cwt)		V (no cwt)		VI (no cwt)		TIP HEIGHT
FEET	ANGLE	360 deg	REAR	360 degree	REAR	360 degree	REAR	360 degree	REAR	360 degree	REAR	360 degree	REAR	FEET
15	84	449,743	449,743	367,290	399,771	294,831	312,321							70
16	83	424,757	424,757	332,310	362,293	258,602	267,347							70
18	81	394,774	394,774	299,828	324,814	229,868	237,364							69
20	80	364,791	364,791	274,843	297,330	202,384	207,381							69
21	79	339,806	339,806	254,854	269,846	182,396	182,396							69
23	77	317,318	317,318	232,367	249,857	159,908	164,906							68
26	74	279,840	279,840	202,384	218,625	127,427	132,424							67
30	71	249,857	249,857	177,398	193,639	99,943	109,937							66
33	68	224,871	224,871	157,410	169,903	82,453	94,946							65
39	62	184,894	184,894	126,178	134,923	59,966	69,960							61
46	56	154,911	157,410	102,441	109,937	46,224	53,719							57
53	49	129,926	134,923	84,951	89,949	36,229	43,725							52
59	41	109,937	114,934	69,960	76,206	29,233	36,229							44
66	31	94,946	97,444	61,215	66,212	23,736	30,483							34

LIEBHERR LG 1200 250 TON TRUCK CRANE

S-28		92 FT MAIN BOOM						85 %
RADIUS	BOOM	I (full cwt)	II (full cwt)	III (1/2 cwt)	IV (1/2 cwt))	V (no cwt)	VI (no cwt)	TIP HEIGHT
FEET	ANGLE	360 deg	REAR	360 degree	REAR	360 degree	REAR	FEET
16	85	394,774	394,774	332,310	362,293	184,894	267,347	93
18	84	387,278	387,278	299,828	324,814	169,903	237,364	93
20	82	364,791	364,791	274,843	297,330	162,407	207,381	92
21	81	339,806	339,806	254,854	269,846	152,413	182,396	92
23	80	317,318	317,318	232,367	249,857	142,418	164,906	92
26	78	279,840	279,840	202,384	218,625	119,931	132,424	91
30	76	249,857	249,857	177,398	193,639	99,943	109,937	90
33	74	224,871	224,871	157,410	169,903	82,453	94,946	89
39	70	184,894	184,894	126,178	134,923	57,467	69,960	87
46	65	152,413	152,413	102,441	109,937	43,725	53,719	84
52	61	127,427	127,427	84,951	89,949	33,731	42,476	80
59	56	107,439	109,937	68,711	76,206	26,235	34,980	76
66	50	92,447	97,444	58,716	63,714	22,487	28,734	71
72	45	79,954	87,450	51,221	54,969	18,739	24,236	64
79	38	72,459	77,456	43,725	48,722	15,741	20,488	56
85	31	64,963	68,711	39,977	43,725	12,993	17,490	46

S-35		115 FT MAIN BOOM						85 %
RADIUS	BOOM	I (full cwt)	II (full cwt)	III (1/2 cwt)	IV (1/2 cwt))	V (no cwt)	VI (no cwt)	TIP HEIGHT
FEET	ANGLE	360 deg	REAR	360 degree	REAR	360 degree	REAR	FEET
18	85	324,814	324,814	299,828	324,814	169,903	237,364	116
20	84	314,820	314,820	274,843	297,330	162,407	207,381	115
21	83	307,324	307,324	254,854	269,846	152,413	182,396	115
23	82	302,327	302,327	232,367	249,857	142,418	164,906	115
26	81	279,840	279,840	202,384	218,625	119,931	132,424	115
30	79	249,857	249,857	174,900	193,639	99,943	109,937	114
33	77	224,871	224,871	156,161	169,903	82,453	92,447	113
39	74	184,894	184,894	122,430	134,923	54,969	68,711	111
46	70	152,413	152,413	101,192	109,937	42,476	52,470	109
52	67	127,427	127,427	83,202	89,949	32,481	41,226	106
59	63	107,439	109,937	67,461	76,206	26,235	33,731	103
66	60	92,447	97,444	57,467	63,714	20,488	27,484	99
72	56	79,954	87,450	47,473	54,969	16,990	22,487	95
79	51	72,459	77,456	41,226	48,722	13,742	18,739	90
85	47	64,963	68,711	36,229	42,476	11,244	15,741	84
92	42	57,467	61,215	31,232	37,479	8,995	12,993	77
98	37	52,470	54,969	29,983	33,731	7,496	11,244	68
105	31	47,473	49,971	27,484	31,232	5,747	8,995	58

LIEBHERR LG 1200 250 TON TRUCK CRANE

S-56

184 FT MAIN BOOM

85 %

RADIUS FEET	BOOM ANGLE	I (full cwt)		III (1/2 cwt)		V (no cwt)		TIP HEIGHT FEET
		360 deg	REAR	360 degree	REAR	360 degree	REAR	
25	85	208,631	208,631	199,886	204,883			184
26	84	204,883	204,883	187,393	197,387			184
30	83	197,387	197,387	164,906	172,401			184
33	82	188,642	189,891	147,416	152,413			183
39	80	164,906	172,401	118,682	122,430			182
46	78	138,671	149,914	92,447	99,943			181
52	76	119,931	127,427	76,206	82,453			179
59	74	103,691	109,937	62,464	68,711			177
66	72	89,949	94,946	53,719	58,716			175
72	69	78,705	83,702	44,974	51,221			173
79	67	69,960	72,459	38,728	43,725			170
85	65	62,464	64,963	34,980	38,728			167
92	63	54,969	57,467	29,983	33,731			164
98	60	48,722	51,221	26,235	29,983			160
112	55	39,977	41,226	19,989	22,487			151
125	50	135	34,980	14,991	17,490			141
138	45	27,484	28,734	9,994	13,742			129
151	38	22,487	24,986	7,496	9,994			113
164	31	18,739	21,238	5,497	7,496			94

LIEBHERR LG 1200 250 TON TRUCK CRANE

S-77		252 FT MAIN BOOM				85 %		
RADIUS	BOOM	I (full cwt)	II (full cwt)	III (1/2 cwt)	IV (1/2 cwt)	V (no cwt)	VI (no cwt)	TIP HEIGHT
FEET	ANGLE	360 deg	REAR	360 degree	REAR	360 degree	REAR	FEET
33	84	109,937	109,937					253
39	83	103,691	103,691					252
46	81	98,694	98,694					251
52	80	92,447	92,447					250
59	78	86,201	87,450					248
66	77	74,957	79,954					247
72	75	67,461	71,209					245
79	74	61,215	63,714					243
85	72	54,969	58,716					241
92	71	48,722	52,970					239
98	69	43,725	47,473					236
112	66	34,980	37,479					231
125	62	27,484	28,983					224
138	59	21,238	22,987					217
151	55	17,490	19,239					208
164	52	12,493	14,492					198
177	48	10,494	12,493					186
190	43	8,995	9,994					173
203	39	6,246	7,496					158
217	34	4,248	4,997					140
223	31	3,748	4,497					129

LIEBHERR LG 1200 LUFFING JIB

ALL LUFFING CHARTS: FULL CWT, SUPPORTED, 360 DEGREE SWING RADIUS

S-21	MAIN BOOM : 69 FT at 85 degrees					85%
RADIUS FEET	69 FT LUFFER	LUFFER ANGLE	LUFFER TIP HT	92 FT LUFFER	LUFFER ANGLE	LUFFER TIP HT
36	164,906	74	138			
39	158,909	71	137			
43	151,163	68	136	129,926	74	160
46	146,166	65	135	126,677	72	159
52	130,925	59	131	118,932	67	157
59	113,935	52	127	110,937	63	154
66	100,193	45	121	96,945	58	150
72	91,198	37	113	85,451	53	146
79	82,453	26	102	76,956	48	140
85				71,459	42	134
92				65,712	35	125
98				60,216	63	114

S-21	MAIN BOOM : 69 FT at 85 degrees					85%
RADIUS FEET	115 FT LUFFER	LUFFER ANGLE	LUFFER TIP HT	138 FT LUFFER	LUFFER ANGLE	LUFFER TIP HT
52	106,439	72	181	82,453	75	205
59	100,942	68	179	78,955	72	203
66	94,946	65	176	75,707	69	201
72	85,451	61	173	72,459	66	198
79	76,956	57	169	69,210	63	196
85	69,960	53	164	65,712	60	192
92	63,464	49	159	61,965	57	188
98	58,217	45	153	56,967	54	183
105	53,719	39	145	53,719	50	178
112	49,472	34	137	48,472	47	173
125				41,976	39	158
138				36,979	29	138

LIEBHERR LG 1200 LUFFING JIB

ALL LUFFING CHARTS: FULL CWT, SUPPORTED, 360 DEGREE SWING RADIUS

S-21	MAIN BOOM : 69 FT AT 85 DEGREES					85%
RADIUS FEET	161 FT LUFFER	LUFFER ANGLE	LUFFER TIP HT	184 FT LUFFER	LUFFER ANGLE	LUFFER TIP HT
59	62,464	75	227			
66	59,966	72	225	59,966	75	249
72	57,217	70	223	57,217	73	248
79	54,469	67	221	54,469	70	245
85	52,220	65	218	52,220	68	243
92	49,971	62	215	49,971	66	240
98	47,973	60	211	47,973	64	237
105	45,974	57	207	45,974	61	233
112	43,725	54	202	43,725	59	230
125	39,977	48	192	39,727	54	221
138	36,229	41	178	35,480	49	211
151	32,481	34	161	31,232	43	198
164	28,983	24	137	27,734	37	182
177				24,986	29	162
S-21	MAIN BOOM : 69 FT at 85 degrees					85%
RADIUS FEET	207 FT LUFFER	LUFFER ANGLE	LUFFER TIP HT	230 FT LUFFER	LUFFER ANGLE	LUFFER TIP HT
72	44,974	75	271			
79	43,725	73	270	34,980	74	294
85	42,476	71	267	33,731	73	291
92	41,226	69	265	32,731	71	289
98	39,977	67	262	31,732	69	287
105	38,728	65	259	30,982	67	284
112	37,479	63	256	29,733	66	281
125	34,730	59	256	27,734	62	275
138	32,232	54	249	25,735	58	268
151	29,233	50	240	24,486	54	259
164	26,235	45	230	21,738	50	249
177	23,487	39	218	19,739	46	237
190	20,988	33	203	17,740	41	223
203	18,989	26	185	15,741	36	206
217			161	13,992	30	186
230				11,743	22	158

LIEBHERR LG 1200 LUFFING JIB

ALL LUFFING CHARTS: FULL CWT, SUPPORTED, 360 DEGREE SWING RADIUS

S-28	MAIN BOOM : 92 FT at 85 degrees					85%
RADIUS FEET	69 FT LUFFER	LUFFER ANGLE	LUFFER TIP HT	92 FT LUFFER	LUFFER ANGLE	LUFFER TIP HT
36	159,908	75	163.4			
39	157,160	73	161.1			
43	147,416	70	159.8			
46	145,667	67	158.5	121,181	73	183
52	127,427	61	155.5	113,935	69	181
59	109,937	54	151.2	102,441	64	178
66	94,946	47	145.7	89,949	59	174
72	87,700	39	138.8	80,704	55	170
79	80,954	30	129.3	73,958	49	165
85				68,711	44	158
92				63,963	37	151
98				59,216	30	141
105				54,969	20	127

S-28	MAIN BOOM : 92 FT at 85 degrees					85%
RADIUS FEET	115 FT LUFFER	LUFFER ANGLE	LUFFER TIP HT	138 FT LUFFER	LUFFER ANGLE	LUFFER TIP HT
52	101,192	73	205.1			
59	95,945	70	202.8	74,957	73	227
66	89,449	66	200.1	71,959	70	225
72	80,704	62	196.8	68,961	67	222
79	67,711	59	193.2	65,463	64	219
85	65,962	55	189.0	61,215	61	216
92	59,966	51	183.7	56,218	58	212
98	54,969	46	177.8	51,970	55	208
105	46,973	31	170.6	48,472	51	202
112	43,975	36	163.1	44,974	48	197
125	41,226	23	139.8	39,477	40	183
138				34,980	30	165

LIEBHERR LG 1200 LUFFING JIB

ALL LUFFING CHARTS: FULL CWT, SUPPORTED, 360 DEGREE SWING RADIUS

S-28	MAIN BOOM : 92 FT AT 85 DEGREES					85%
RADIUS FEET	161 FT LUFFER	LUFFER ANGLE	LUFFER TIP HT	184 FT LUFFER	LUFFER ANGLE	LUFFER TIP HT
66	56,218	73	249.0			
72	53,969	71	247.0	53,969	73	271
79	51,471	68	244.4	51,471	71	269
85	49,472	66	241.5	49,472	69	266
92	47,473	63	238.5	47,473	67	264
98	44,974	60	234.9	44,974	64	261
105	42,476	58	231.0	42,476	62	258
112	39,977	55	226.7	39,977	60	254
125	34,980	49	216.2	34,980	55	245
138	31,232	42	203.4	31,232	50	235
151	27,734	35	187.0	27,734	44	223
164	24,986	25	164.0	24,986	38	208
177				22,487	31	188
190				20,488	21	161

S-28	MAIN BOOM : 92 FT at 85 degrees					85%
RADIUS FEET	207 FT LUFFER	LUFFER ANGLE	LUFFER TIP HT	230 FT LUFFER	LUFFER ANGLE	LUFFER TIP HT
79	41,476	73	293.0	31,982	75	317
85	40,477	71	291.0	31,232	73	315
92	39,228	69	288.7	30,483	71	313
98	37,978	67	286.1	29,483	70	311
105	36,979	65	283.1	28,484	68	308
112	35,730	63	279.9	27,484	66	305
125	32,481	59	272.3	25,735	63	299
138	28,234	55	264.1	23,986	59	292
151	24,986	50	254.3	21,987	55	283
164	22,487	45	242.5	20,488	51	273
177	19,989	40	228.0	18,489	46	261
190	17,990	34	210.6	16,740	42	248
203	16,241	27	188.3	14,991	37	232
217				13,242	31	212
230				11,493	23	186

LIEBHERR LG 1200 LUFFING JIB

ALL LUFFING CHARTS: FULL CWT, SUPPORTED, 360 DEGREE SWING RADIUS

S-28	MAIN BOOM : 92 FT AT 85 DEGREES					85%
RADIUS FEET	161 FT LUFFER	LUFFER ANGLE	LUFFER TIP HT	184 FT LUFFER	LUFFER ANGLE	LUFFER TIP HT
66	56,218	73	249.0			
72	53,969	71	247.0	53,969	73	271
79	51,471	68	244.4	51,471	71	269
85	49,472	66	241.5	49,472	69	266
92	47,473	63	238.5	47,473	67	264
98	44,974	60	234.9	44,974	64	261
105	42,476	58	231.0	42,476	62	258
112	39,977	55	226.7	39,977	60	254
125	34,980	49	216.2	34,980	55	245
138	31,232	42	203.4	31,232	50	235
151	27,734	35	187.0	27,734	44	223
164	24,986	25	164.0	24,986	38	208
177				22,487	31	188
190				20,488	21	161

S-28	MAIN BOOM : 92 FT at 85 degrees					85%
RADIUS FEET	207 FT LUFFER	LUFFER ANGLE	LUFFER TIP HT	230 FT LUFFER	LUFFER ANGLE	LUFFER TIP HT
79	41,476	73	293.0	31,982	75	317
85	40,477	71	291.0	31,232	73	315
92	39,228	69	288.7	30,483	71	313
98	37,978	67	286.1	29,483	70	311
105	36,979	65	283.1	28,484	68	308
112	35,730	63	279.9	27,484	66	305
125	32,481	59	272.3	25,735	63	299
138	28,234	55	264.1	23,986	59	292
151	24,986	50	254.3	21,987	55	283
164	22,487	45	242.5	20,488	51	273
177	19,989	40	228.0	18,489	46	261
190	17,990	34	210.6	16,740	42	248
203	16,241	27	188.3	14,991	37	232
217				13,242	31	212
230				11,493	23	186

LIEBHERR LG 1200 LUFFING JIB

ALL LUFFING CHARTS: FULL CWT, SUPPORTED, 360 DEGREE SWING RADIUS

S-35/42	MAIN BOOM :115 FT AND 138 FT at 85 degrees					85%
RADIUS FEET	69 FT LUFFER	LUFFER ANGLE	LUFFER TIP HT	92 FT LUFFER	LUFFER ANGLE	LUFFER TIP HT
46	130,425	69 or 70	182 or 206	106,189	72 or 74	206 or 231
52	117,433	63 or 65	179 or 203	100,942	70 or 71	204 or 228
59	101,192	56 or 58	176 or 199	94,946	65 or 67	202 or 225
66	89,949	49 or 52	171 or 195	85,951	61 or 62	198 or 222
72	82,953	42 or 44	164 or 189	76,956	56 or 58	194 or 219
79	76,456	33 or 36	156 or 181	69,460	51 or 53	189 or 214
85	69,960	21 or 25	142 or 170	62,964	45 or 47	183 or 208
92				57,967	39 or 41	176 or 201
98				53,469	32 or 35	167 or 193

S-35/42	MAIN BOOM :115 FT AND 138 FT at 85 degrees					85%
RADIUS FEET	115 FT LUFFER	LUFFER ANGLE	LUFFER TIP HT	138 FT LUFFER	LUFFER ANGLE	LUFFER TIP HT
52	84,951	73 or 74	228 or 250			
59	80,954	70 or 71	226 or 248	64,963	73 or 74	251 or 274
66	77,206	66 or 67	224 or 245	62,464	70 or 71	248 or 272
72	72,958	62 or 63	221 or 241	59,966	67 or 68	246 or 270
79	66,962	59 or 60	217 or 237	57,467	64 or 65	243 or 267
85	61,215	55 or 56	213 or 233	54,969	61 or 62	240 or 264
92	56,218	51 or 52	208 or 227	52,470	58 or 59	236 or 260
98	51,970	46 or 48	203 or 221	49,472	55 for 56	232 or 256
105	48,472	31 or 33	196 or 218	46,224	51 or 52	227 or 246
112	45,474	36 or 38	188 or 214	42,726	48 or 49	222 or 238
125	39,977	23 or 25	167 or 194	37,479	40 or 41	209 or 234
138				33,231	30 or 32	191 or 217
151				29,483	19	163 or 192

LIEBHERR LG 1200 LUFFING JIB

ALL LUFFING CHARTS: FULL CWT, SUPPORTED, 360 DEGREE SWING RADIUS

S-35/42	MAIN BOOM :115 FT AND 138 FT at 85 degrees					85%
RADIUS FEET	161 FT LUFFER	LUFFER ANGLE	LUFFER TIP HT	184 FT LUFFER	LUFFER ANGLE	LUFFER TIP HT
66	47,473	74 or 75	273 or 296			
72	46,224	71 or 72	270 or 294	46,224	74	295 or 318
79	44,974	69 or 70	268 or 292	44,974	72	293 or 316
85	43,225	66 or 67	265 or 289	43,225	69	290 or 314
92	41,726	64 or 65	262 or 286	41,726	67	288 or 311
98	40,227	61 or 62	259 or 283	40,227	65	285 or 308
105	38,728	58 or 59	255 or 279	38,728	63	281 or 305
112	36,979	56 or 57	251 or 274	36,479	60	278 or 302
125	33,981	50 or 51	241 or 265	32,481	56	270 or 294
138	30,982	43 or 44	228 or 253	28,234	50	260 or 284
151	27,984	36 or 37	213 or 238	24,986	45	248 or 273
164	24,986	27 or 29	191 or 218	22,237	39	233 or 259
177				19,989	32	215 or 240
190				18,240	23	189 or 217

S-35/42	MAIN BOOM :115 FT AND 138 FT at 85 degrees					85%
RADIUS FEET	207 FT LUFFER	LUFFER ANGLE	LUFFER TIP HT	230 FT LUFFER	LUFFER ANGLE	LUFFER TIP HT
79	34,980	74	313 or 340			
85	33,981	72	314 or 338	26,985	74	339 or 362
92	33,231	70	312 or 336	26,485	73	337 or 360
98	32,232	68	310 or 333	25,735	71	334 or 358
105	30,982	67	307 or 331	24,236	67	332 or 353
112	30,483	64	304 or 328	23,487	65	329 or 350
125	28,484	60	297 or 321	22,737	63	323 or 347
138	25,985	56	288 or 313	21,238	60	316 or 340
151	22,987	51	279 or 303	19,739	56	307 or 332
164	20,488	46	267 or 292	17,990	52	298 or 322
177	18,489	41	253 or 279	15,991	48	286 or 311
190	16,740	35	237 or 262	14,242	43	273 or 298
203	14,991	28	215 or 241	12,743	38	258 or 283
217	13,742	19	184 or 213	11,493	32	238 or 264
230				10,244	26	214 or 241

LIEBHERR LG 1200 LUFFING JIB

ALL LUFFING CHARTS: FULL CWT, SUPPORTED, 360 DEGREE SWING RADIUS

S-35/42	MAIN BOOM :161 FT AND 184 FT at 85 degrees					85%
RADIUS FEET	69 FT LUFFER	LUFFER ANGLE	LUFFER TIP HT	92 FT LUFFER	LUFFER ANGLE	LUFFER TIP HT
46	102,441	72	229 or 253			
52	95,445	66	227 or 251	77,456	74	251 or 275
59	87,450	60	224 or 248	73,708	69	249 or 273
66	77,955	54	219 or 244	69,960	65	246 or 270
72	69,960	47	214 or 239	65,712	60	242 or 267
79	63,714	38	207 or 232	59,966	56	238 or 262
85	57,967	29	197 or 223	54,469	50	233 or 258
92				49,971	45	227 or 252
98				46,224	39	219 or 244
105				43,475	23	194 or 222
112				40,477		

S-35/42	MAIN BOOM :161 FT AND 184 FT at 85 degrees					85%
RADIUS FEET	115 FT LUFFER	LUFFER ANGLE	LUFFER TIP HT	138 FT LUFFER	LUFFER ANGLE	LUFFER TIP HT
59	67,461	73	274 or 297			
66	64,463	69	271 or 295	52,470	73	296 or 319
72	60,465	66	268 or 292	50,471	70	293 or 317
79	54,969	62	265 or 289	48,722	67	291 or 314
85	50,221	58	261 or 285	46,973	64	288 or 312
92	46,224	54	257 or 281	44,225	61	284 or 308
98	42,975	50	252 or 277	40,977	58	281 or 304
105	40,227	46	246 or 274	37,728	55	276 or 300
112	37,479	41	239 or 271	35,480	51	271 or 295
125	33,481	30	220 or 264	30,982	44	259 or 284
138				27,484	35	242 or 269
151				24,986	24	219 or 247

LIEBHERR LG 1200 LUFFING JIB

ALL LUFFING CHARTS: FULL CWT, SUPPORTED, 360 DEGREE SWING RADIUS

S-35/42	MAIN BOOM :161 FT AND 184 FT at 85 degrees					85%
RADIUS FEET	161 FT LUFFER	LUFFER ANGLE	LUFFER TIP HT	184 FT LUFFER	LUFFER ANGLE	LUFFER TIP HT
72	42,476	73	318 or 341			
79	41,226	70	315 or 339	35,480	73	340 or 363
85	39,727	68	313 or 337	34,480	71	337 or 361
92	38,228	65	310 or 334	33,481	69	335 or 359
98	36,979	63	307 or 331	29,733	66	332 or 356
105	34,730	60	303 or 327	27,984	64	329 or 353
112	32,481	57	299 or 323	25,985	62	326 or 350
125	27,984	52	290 or 314	24,486	57	318 or 342
138	24,986	45	278 or 303	21,987	52	309 or 333
151	22,487	38	263 or 289	18,989	47	298 or 322
164	20,238	30	244 or 270	16,990	41	284 or 309
177	18,240	19	215 or 244	14,991	34	266 or 292
190				13,492	26	244 or 271

S-35/42	MAIN BOOM :161 FT AND 184 FT at 85 degrees					85%
RADIUS FEET	207 FT LUFFER	LUFFER ANGLE	LUFFER TIP HT	230 FT LUFFER	LUFFER ANGLE	LUFFER TIP HT
85	27,984	73	362 or 385			
92	26,985	71	359 or 383	22,487	73	384 or 407
98	26,485	69	357 or 381	21,987	71	382 or 405
105	25,735	67	354 or 378	21,238	70	379 or 403
112	24,986	65	351 or 375	20,738	68	377 or 400
125	22,237	61	345 or 369	19,489	64	371 or 395
138	18,989	57	337 or 361	17,240	61	364 or 388
151	16,491	52	328 or 352	14,492	57	356 or 380
164	14,492	48	317 or 342	12,243	53	346 or 371
177	12,993	43	303 or 329	10,744	48	336 or 360
190	11,993	37	288 or 313	9,245	44	323 or 348
203	9,994	30	268 or 294	7,995	39	308 or 334
217	8,995	22	241 or 269	6,996	33	290 or 316
230				6,246	27	268 or 294
243				5,247	18	236 or 265

LIEBHERR LG 1200 LUFFING JIB

ALL LUFFING CHARTS: FULL CWT, SUPPORTED, 360 DEGREE SWING RADIUS

NOTE: All main/luffing jib combinations with main boom exceeding 161 ft require attaching the slewing platform (house) to the deck while erecting the boom.

S-63	MAIN BOOM :207 FT at 85 degrees					85%
RADIUS FEET	69 FT LUFFER	LUFFER ANGLE	LUFFER TIP HT	92 FT LUFFER	LUFFER ANGLE	LUFFER TIP HT
45	83,000	75	278			
52	82,453	70	274			
59	77,456	64	272	66,212	71	296
66	69,960	58	268	63,214	66	294
72	62,964	51	263	59,216	62	291
79	57,217	44	257	53,969	57	287
85	52,470	35	249	49,472	52	282
92	48,472	24	238	45,474	47	277
98				42,476	41	270
105				39,477	33	260
112				36,479	26	250

S-63	MAIN BOOM :207 FT at 85 degrees					85%
RADIUS FEET	115 FT LUFFER	LUFFER ANGLE	LUFFER TIP HT	138 FT LUFFER	LUFFER ANGLE	LUFFER TIP HT
59	61,215	74	321			
66	58,467	71	319	49,971	75	343
72	55,468	68	316	47,973	72	341
79	51,221	64	313	45,974	69	338
85	46,723	61	310	42,975	66	335
92	42,726	57	306	39,477	63	332
98	39,228	53	301	36,229	60	328
105	36,229	48	295	33,731	56	324
112	33,481	44	289	31,482	53	320
125	29,483	33	273	27,484	46	309
138				24,486	38	294
151				21,738	28	274

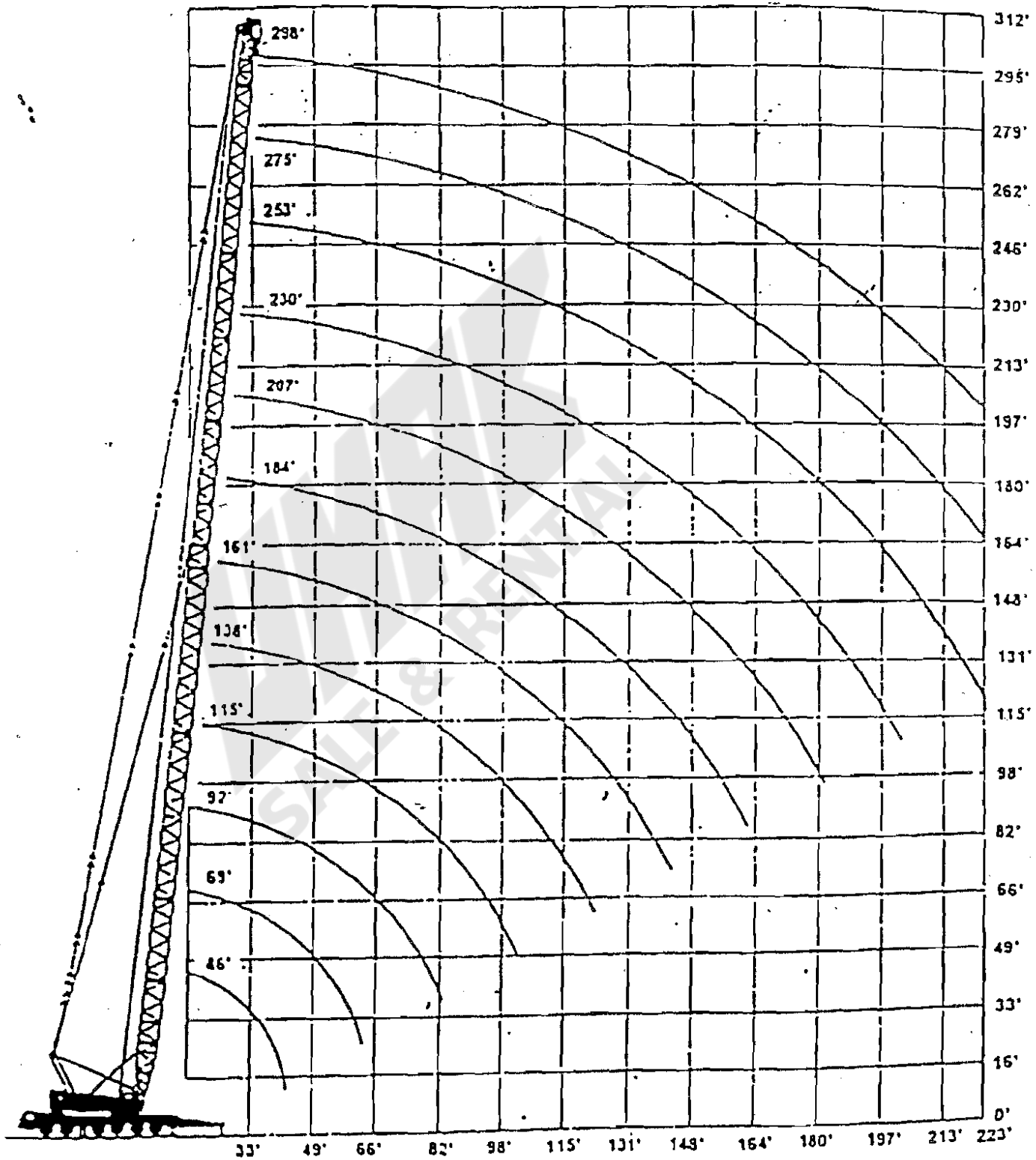
LIEBHERR LG1200 LUFFING JIB

ALL LUFFING CHARTS: FULL CWT, SUPPORTED, 360 DEGREE SWING RADIUS

S-35/42	MAIN BOOM :207 FT at 85 degrees					85%
RADIUS FEET	161 FT LUFFER	LUFFER ANGLE	LUFFER TIP HT	184 FT LUFFER	LUFFER ANGLE	LUFFER TIP HT
72	42,476	74	364			
79	40,977	72	363	31,982	74	386
85	38,978	69	360	31,232	72	385
92	36,479	67	358	29,983	70	382
98	33,481	64	355	28,734	68	380
105	30,982	62		26,485	66	377
112	28,484	59	348	24,736	63	374
125	24,736	53	339	21,238	59	366
138	21,488	47	328	18,489	54	358
151	19,239	41	314	15,991	48	347
164	16,990	33	297	13,992	43	334
177	15,241	23	272	12,243	36	318
190				10,744	29	297

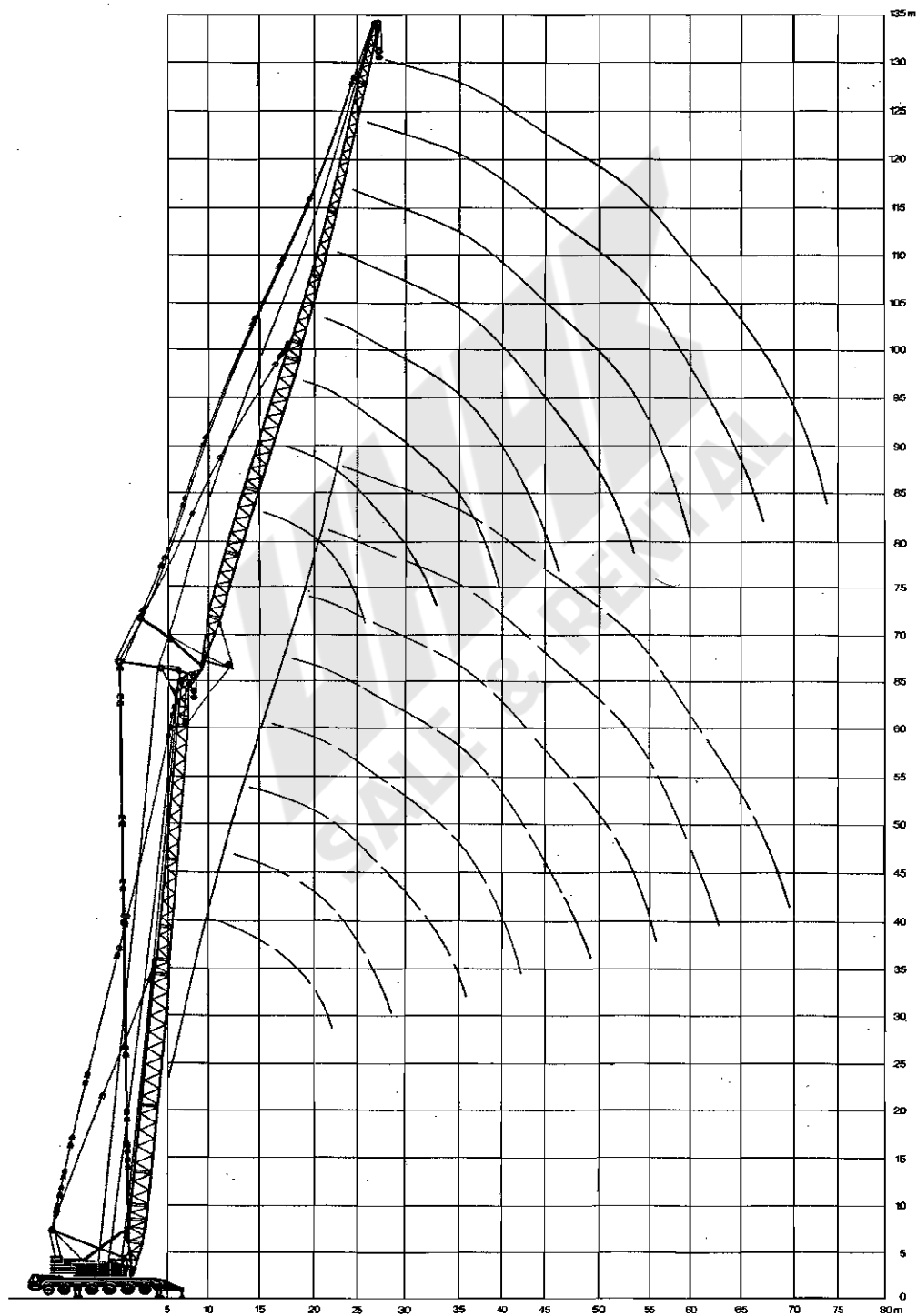
S-35/42	MAIN BOOM :207 FT at 85 degrees					85%
RADIUS FEET	207 FT LUFFER	LUFFER ANGLE	LUFFER TIP HT	230 FT LUFFER	LUFFER ANGLE	LUFFER TIP HT
85	24,986	74	408			
92	24,486	72	406	20,988	74	439
98	23,986	70	404	20,488	72	428
105	22,987	68	401	19,739	71	426
112	21,987	66	399	18,989	69	424
125	18,989	62	393	16,491	65	418
138	15,991	58	385	13,992	62	412
151	13,742	54	376	11,993	58	404
164	11,743	49	366	9,994	54	395
177	10,244	44	354	8,495	50	385
190	8,995	39	339	6,996	45	373
203	7,746	32	320	5,997	41	359
217	6,746	25	296	4,997	35	342
230				4,248	29	321
243				3,498	21	293

2 TON LIEBHERR LG-1200

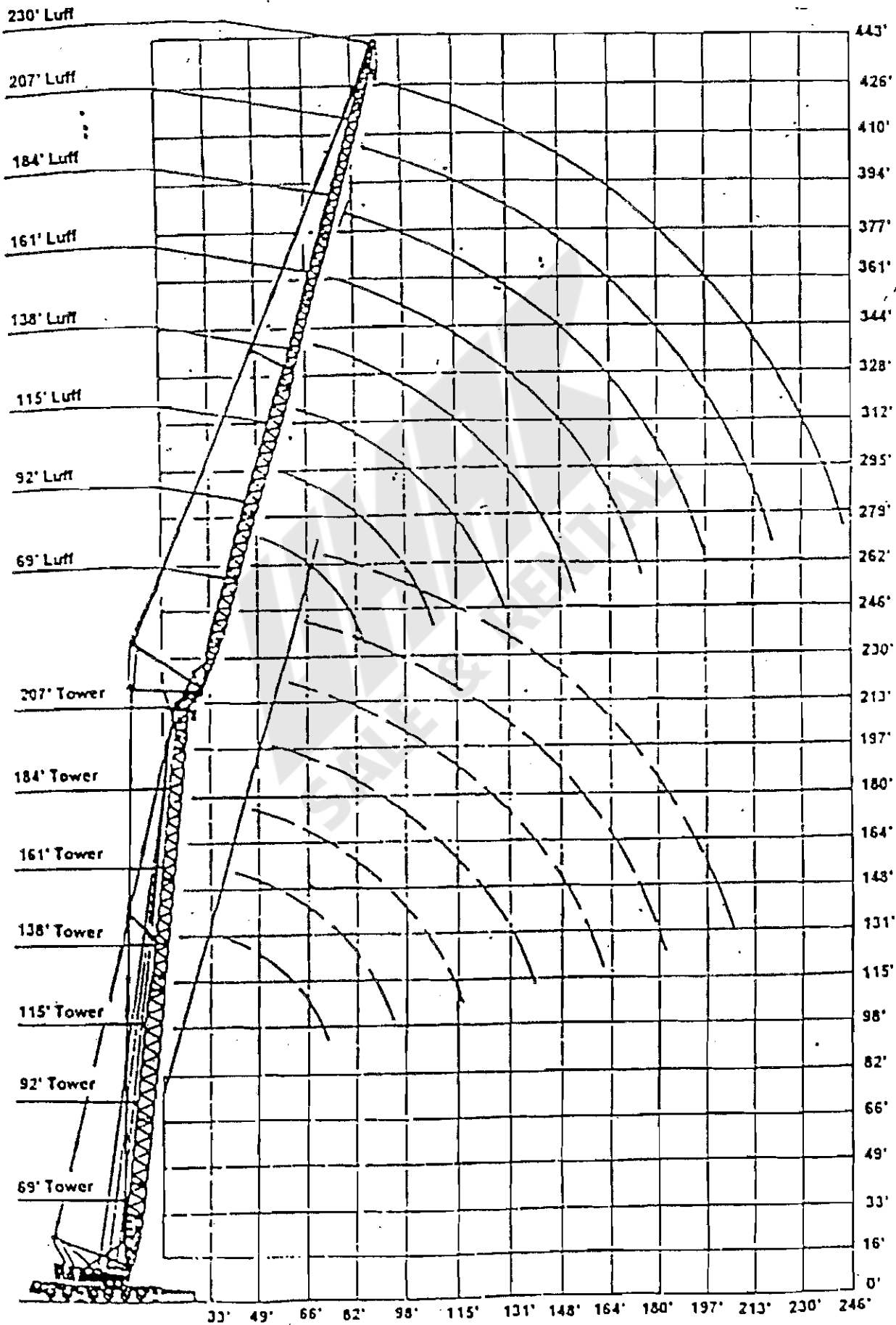


Die Hubhöhen. Lifting heights. Hauteurs de levage.

Auslegerkombination »SN wippbar«.
Jib combination »SN luffing«.
Combinaison flèche principale/flèche à volée variable »SN«.



TUN LIEBNER LG-1200



Anmerkungen zu den Traglasttabellen.

Remarks referring to load charts.

Remarques relatives aux forces de levage.

1. Die angegebenen Traglasten überschreiten nicht 75 % der Kipplast.
2. Die Standsicherheit 75 % ist unter Berücksichtigung der Windstärke 8 – 9 = 245 N/m² Staudruck bzw. 20 m/s Windgeschwindigkeit errechnet.
3. Die Traglasten sind in Tonnen angegeben.
4. Die Traglasten 75 % entsprechen der DIN 15019, Bl. 2, Ausgabe März 1973 und der F. E. M.
5. Das Gewicht des Lastaufnahmemittels ist von den Traglasten abzuziehen.
6. Die Ausladungen sind von Mitte Drehkranz gemessen.
7. Das Ballastgewicht beträgt ca. 72 t.
8. Die angegebenen Traglasten gelten für den Rüstzustand I = abgestützt, 360° (»S«- und »SN«-Betrieb) und Rüstzustand II = abgestützt, 2 × 10° nach hinten (»S«-Betrieb).
9. Für folgende Rüstzustände können Traglastwerte angefordert werden:
 Rüstzustand III = abgestützt, 360°, 33 t Ballast (»S«- und »SN«-Betrieb)
 Rüstzustand IV = abgestützt, 2 × 10° nach hinten, 33 t Ballast (»S«-Betrieb)
 Rüstzustand V = abgestützt, 360°, ohne Ballast (»S«-Betrieb)
 Rüstzustand VI = abgestützt, 2 × 10° nach hinten, ohne Ballast (»S«-Betrieb)
10. Traglastangaben für die Auslegerkombination »SN wippbar« mit 2-Hakenbetrieb auf Anfrage.
11. Für die Traglasten »nach hinten« für den Schwerlastausleger S 84 m und S 91 m ist am Heck des Fahrgestells eine kurze Zusatzabstützung erforderlich.

1. The quoted lifting capacities do not exceed 75 % of the tipping load.
2. 75 % stability has been calculated on the basis of wind force 8 – 9 = 245 N/m² or 20 m/sec wind speed.
3. Lifting capacities are shown in metric tons.
4. The 75 % lifting capacities are in accordance with DIN 15019, sheet 2, edition March 1973 and F. E. M. standards.
5. The weight of the load lifting equipment or tackle must be deducted from the permitted lifting capacity.
6. Working radii are measured from the slewing ring centreline.
7. Weight of ballast is approx. 72 t.
8. Quoted lifting capacities apply to equipment condition I = supported, 360° (»S« or »SN« operation) and II = supported 2 × 10° to rear (»S« operation).
9. Lifting capacity data can be obtained on demand for the following equipment conditions:
 Equipment condition III = supported, 360°, 33 t ballast (»S« and »SN« operation)
 Equipment condition IV = supported, 2 × 10° to rear, 33 t ballast (»S« operation)
 Equipment condition V = supported, 360°, without ballast (»S« operation)
 Equipment condition VI = supported, 2 × 10° to rear, without ballast (»S« operation)
10. Load capacity data for the jib combination »SN luffing« with 2hook operation can be obtained on request.
11. For the loads quoted »to rear« at heavy duty jib S 84 m and S 91 m a short extra outrigger support unit is required at the rear of the chassis.

1. Les forces de levage données ne dépassent en aucun cas 75 % de l'effort de renversement.
2. Une sécurité de 75 % tient compte d'un vent de force 8 – 9, soit d'une pression de 245 N/m² et d'une vitesse de 20 m/sec.
3. Les forces de levage sont données en tonnes.
4. Les forces de levage données à 75 % sont conformes au DIN 15019, feuille 2, édition Mars 1973 et à celles de la F. E. M.
5. Le poids des moufles et crochets est à déduire des forces de levage données.
6. La portée est mesurée à partir de l'axe de rotation.
7. Poids du contrepoids env. 72 t.
8. Les forces de levage données sont valable pour:
 Combinaison I = machine calée, sur 360° (travail avec équipement »S« et »SN«) et combinaison II = machine calée, 2 × 10° vers l'arrière (travail avec équipement »S«).
9. Il est possible d'obtenir les abaques de charges pour les combinaisons suivantes:
 Combinaison III = machine calée, sur 360°, contrepoids 33 t (travail avec équipement »S« et »SN«)
 Combinaison IV = machine calée, 2 × 10° vers l'arrière, contrepoids 33 t (travail avec équipement »S«)
 Combinaison V = machine calée, 360°, sans contrepoids (travail avec équipement »S«)
 Combinaison VI = machine calée, 2 × 10° vers l'arrière, sans contrepoids (travail avec équipement »S«)
10. Les forces de levage pour la combinaison »flèche principale/flèche à volée variable SN« et travail à 3 crochets seront données sur demande.
11. Pour les charges »vers l'arrière«, sur la flèche S 84 m et S 91 m il est nécessaire de monter un calage supplémentaire court à l'arrière du véhicule porteur.

LIEBHERR LG 1200 250 TON TRUCK CRANE

S-14		46 FT MAIN BOOM						85 %	
RADIUS BOOM		I (full cwt)		II (full cwt)		III (1/2 cwt) IV (1/2 cwt)		V (no cwt) VI (no cwt)	TIP HEIGHT
FEET	ANGLE	360 deg	REAR	360 degree	REAR	360 degree	REAR	FEET	
13	85	499,714	499,714					47	
15	81	449,743	449,743	367,290	399,771	294,831	312,321	47	
16	79	424,757	424,757	332,310	362,293	258,602	267,347	46	
20	75	364,791	364,791	274,843	297,330	202,384	207,381	45	
21	73	339,806	339,806	254,854	269,846	182,396	182,396	45	
23	70	317,318	317,318	232,367	249,857	159,908	164,906	44	
26	66	279,840	279,840	202,384	218,625	127,427	132,424	42	
30	61	249,857	249,857	177,398	193,639	99,943	109,937	41	
33	56	224,871	224,871	157,410	173,651	82,453	94,946	38	
39	45	184,894	184,894	126,178	139,920	59,966	69,960	32	
46	30	159,908	159,908	102,441	112,436	46,224	54,969	23	

S-21		69 FT MAIN BOOM						85 %	
RADIUS BOOM		I (full cwt)		II (full cwt)		III (1/2 cwt) IV (1/2 cwt)		V (no cwt) VI (no cwt)	TIP HEIGHT
FEET	ANGLE	360 deg	REAR	360 degree	REAR	360 degree	REAR	FEET	
15	84	449,743	449,743	367,290	399,771	294,831	312,321	70	
16	83	424,757	424,757	332,310	362,293	258,602	267,347	70	
18	81	394,774	394,774	299,828	324,814	229,868	237,364	69	
20	80	364,791	364,791	274,843	297,330	202,384	207,381	69	
21	79	339,806	339,806	254,854	269,846	182,396	182,396	69	
23	77	317,318	317,318	232,367	249,857	159,908	164,906	68	
26	74	279,840	279,840	202,384	218,625	127,427	132,424	67	
30	71	249,857	249,857	177,398	193,639	99,943	109,937	66	
33	68	224,871	224,871	157,410	169,903	82,453	94,946	65	
39	62	184,894	184,894	126,178	134,923	59,966	69,960	61	
46	56	154,911	157,410	102,441	109,937	46,224	53,719	57	
53	49	129,926	134,923	84,951	89,949	36,229	43,725	52	
59	41	109,937	114,934	69,960	76,206	29,233	36,229	44	
66	31	94,946	97,444	61,215	66,212	23,736	30,483	34	

LIEBHERR LG 1200 250 TON TRUCK CRANE

S-28		92 FT MAIN BOOM						85 %
RADIUS	BOOM	I (full cwt)		III (1/2 cwt)		V (no cwt)		TIP HEIGHT
FEET	ANGLE	360 deg	REAR	360 degree	REAR	360 degree	REAR	
16	85	394,774	394,774	332,310	362,293	184,894	267,347	93
18	84	387,278	387,278	299,828	324,814	169,903	237,364	93
20	82	364,791	364,791	274,843	297,330	162,407	207,381	92
21	81	339,806	339,806	254,854	269,846	152,413	182,396	92
23	80	317,318	317,318	232,367	249,857	142,418	164,906	92
26	78	279,840	279,840	202,384	218,625	119,931	132,424	91
30	76	249,857	249,857	177,398	193,639	99,943	109,937	90
33	74	224,871	224,871	157,410	169,903	82,453	94,946	89
39	70	184,894	184,894	126,178	134,923	57,467	69,960	87
46	65	152,413	152,413	102,441	109,937	43,725	53,719	84
52	61	127,427	127,427	84,951	89,949	33,731	42,476	80
59	56	107,439	109,937	68,711	76,206	26,235	34,980	76
66	50	92,447	97,444	58,716	63,714	22,487	28,734	71
72	45	79,954	87,450	51,221	54,969	18,739	24,236	64
79	38	72,459	77,456	43,725	48,722	15,741	20,488	56
85	31	64,963	68,711	39,977	43,725	12,993	17,490	46

S-35		115 FT MAIN BOOM						85 %
RADIUS	BOOM	I (full cwt)		III (1/2 cwt)		V (no cwt)		TIP HEIGHT
FEET	ANGLE	360 deg	REAR	360 degree	REAR	360 degree	REAR	
18	85	324,814	324,814	299,828	324,814	169,903	237,364	116
20	84	314,820	314,820	274,843	297,330	162,407	207,381	115
21	83	307,324	307,324	254,854	269,846	152,413	182,396	115
23	82	302,327	302,327	232,367	249,857	142,418	164,906	115
26	81	279,840	279,840	202,384	218,625	119,931	132,424	115
30	79	249,857	249,857	174,900	193,639	99,943	109,937	114
33	77	224,871	224,871	156,161	169,903	82,453	92,447	113
39	74	184,894	184,894	122,430	134,923	54,969	68,711	111
46	70	152,413	152,413	101,192	109,937	42,476	52,470	109
52	67	127,427	127,427	83,202	89,949	32,481	41,226	106
59	63	107,439	109,937	67,461	76,206	26,235	33,731	103
66	60	92,447	97,444	57,467	63,714	20,488	27,484	99
72	56	79,954	87,450	47,473	54,969	16,990	22,487	95
79	51	72,459	77,456	41,226	48,722	13,742	18,739	90
85	47	64,963	68,711	36,229	42,476	11,244	15,741	84
92	42	57,467	61,215	31,232	37,479	8,995	12,993	77
98	37	52,470	54,969	29,983	33,731	7,496	11,244	68
105	31	47,473	49,971	27,484	31,232	5,747	8,995	58

LIEBHERR LG 1200 250 TON TRUCK CRANE

S-42

138 FT MAIN BOOM

85 %

RADIUS FEET	BOOM ANGLE	I (full cwt)		III (1/2 cwt)		V (no cwt)		TIP HEIGHT FEET
		360 deg	REAR	360 degree	REAR	360 degree	REAR	
20		267,347	267,347					
21		262,350	262,350					
23		254,854	254,854					
25		249,857	249,857					
26		242,361	242,361					
28		237,364	237,364					
30		232,367	232,367					
33		219,874	219,874					
39		184,894	184,894					
46		152,413	152,413					
52		127,427	127,427					
59		107,439	109,937					
66		92,447	97,444					
(72)		79,954	86,201					
79		72,459	76,206					
85		63,714	67,461					
92		56,218	59,966					
98		51,221	54,969					
105		44,974	51,221					
112		42,476	46,224					
118		38,728	42,476					
125		34,980	38,728					

LIEBHERR LG 1200 250 TON TRUCK CRANE

S-49

161 FT MAIN BOOM

85 %

RADIUS FEET	BOOM ANGLE	I (full cwt)		II (full cwt)		III (1/2 cwt)		IV (1/2 cwt)		V (no cwt)	VI (no cwt)	TIP HEIGHT FEET
		360 deg	REAR	360 degree	REAR	360 degree	REAR	360 degree	REAR			
23	85	232,367	232,367	224,871	232,367							161
26	83	221,123	221,123	194,888	207,381							161
30	82	211,129	211,129	164,906	177,398							161
33	81	199,886	199,886	147,416	161,158							160
39	79	167,404	174,900	118,682	128,676							159
46	76	139,920	149,914	97,444	103,691							157
52	74	121,181	127,427	78,705	86,201							155
59	71	104,940	109,937	66,212	72,459							153
66	69	91,198	96,195	56,218	61,215							151
72	66	79,954	84,951	47,473	52,470							148
79	64	71,209	73,708	41,226	44,974							145
85	61	62,464	66,212	36,229	39,977							141
92	58	56,218	58,716	31,232	34,980							137
98	55	49,971	53,719	27,484	31,232							133
112	49	41,226	44,974	21,238	23,736							122
125	43	34,980	37,479	16,241	18,739							109
138	35	29,983	32,481	12,493	14,991							92
144	31	27,484	29,983	11,244	13,242							82

LIEBHERR LG 1200 250 TON TRUCK CRANE

S-63

207 FT MAIN BOOM

85 %

RADIUS FEET	BOOM ANGLE	I (full cwt)		III (1/2 cwt)		V (no cwt)		TIP HEIGHT FEET
		360 deg	REAR	360 degree	REAR	360 degree	REAR	
26	85	168,653	168,653	168,653	168,653			207
30	84	162,407	162,407	149,914	157,410			207
33	83	157,410	157,410	133,673	142,418			207
39	81	146,166	146,166	108,688	109,937			205
46	79	132,424	132,424	88,699	89,949			204
52	77	114,934	121,181	73,708	74,957			203
59	76	98,694	104,940	61,215	62,464			201
66	74	88,699	91,198	52,470	53,719			199
72	72	77,456	79,954	43,725	46,224			197
79	70	68,711	69,960	37,479	39,977			195
85	68	61,215	62,464	33,731	34,980			192
92	66	53,719	56,718	28,734	29,983			189
98	64	47,473	49,971	24,986	27,484			186
112	60	37,479	39,977	18,739	21,238			179
125	55	29,983	32,481	13,742	16,241			170
138	51	24,986	27,484	9,495	12,493			160
151	46	19,989	21,987	6,996	9,245			148
164	40	17,490	17,990	(5,247)	6,996			134
177	34	13,742	14,991	2,499	4,497			116
184	31	12,493	12,993		2,998			105

LIEBHERR LG 1200 250 TON TRUCK CRANE

S-77		252 FT MAIN BOOM						85 %
RADIUS	BOOM	I (full cwt)		III (1/2 cwt)		V (no cwt)		TIP HEIGHT
FEET	ANGLE	360 deg	REAR	360 degree	REAR	360 degree	REAR	FEET
33	84	109,937	109,937	99.87				253
39	83	103,691	103,691					252
46	81	98,694	98,694					251
52	80	92,447	92,447					250
59	78	86,201	87,450					248
66	77	74,957	79,954					247
72	75	67,461	71,209					245
79	74	61,215	63,714					243
85	72	54,969	58,716					241
92	71	48,722	52,970					239
98	69	43,725	47,473					236
112	66	34,980	37,479					231
125	62	27,484	28,983					224
138	59	21,238	22,987					217
151	55	17,490	19,239					208
164	52	12,493	14,492					198
177	48	10,494	12,493					186
190	43	8,995	9,994					173
203	39	6,246	7,496					158
217	34	4,248	4,997					140
223	31	3,748	4,497					129

LIEBHERR LG 1200 LUFFING JIB

ALL LUFFING CHARTS: FULL CWT, SUPPORTED, 360 DEGREE SWING RADIUS

S-21	MAIN BOOM : 69 FT at 85 degrees					85%
RADIUS FEET	69 FT N = 21 LUFFER	LUFFER ANGLE	LUFFER TIP HT	92 FT N = 28 LUFFER	LUFFER ANGLE	LUFFER TIP HT
36	164,906	74	138			
39	158,909	71	137			
43	151,163	68	136	129,926	74	160
46	146,166	65	135	126,677	72	159
52	130,925	59	131	118,932	67	157
59	113,935	52	127	110,937	63	154
66	100,193	45	121	96,945	58	150
72	91,198	37	113	85,451	53	146
79	82,453	26	102	76,956	48	140
85				71,459	42	134
92				65,712	35	125
98				60,216	63	114
S-21	MAIN BOOM : 69 FT at 85 degrees					85%
RADIUS FEET	115 FT N = 35 LUFFER	LUFFER ANGLE	LUFFER TIP HT	138 FT N = 42 LUFFER	LUFFER ANGLE	LUFFER TIP HT
52	106,439	72	181	82,453	75	205
59	100,942	68	179	78,955	72	203
66	94,946	65	176	75,707	69	201
72	85,451	61	173	72,459	66	198
79	76,956	57	169	69,210	63	196
85	69,960	53	164	65,712	60	192
92	63,464	49	159	61,965	57	188
98	58,217	45	153	56,967	54	183
105	53,719	39	145	53,719	50	178
112	49,472	34	137	48,472	47	173
125				41,976	39	158
138				36,979	29	138

LIEBHERR LG 1200 LUFFING JIB

ALL LUFFING CHARTS: FULL CWT, SUPPORTED, 360 DEGREE SWING RADIUS

S-21	MAIN BOOM : 69 FT AT 85 DEGREES					85%
RADIUS FEET	161 FT N=49 LUFFER	LUFFER ANGLE	LUFFER TIP HT	184 FT N=56 LUFFER	LUFFER ANGLE	LUFFER TIP HT
59	62,464	75	227			
66	59,966	72	225	59,966	75	249
72	57,217	70	223	57,217	73	248
79	54,469	67	221	54,469	70	245
85	52,220	65	218	52,220	68	243
92	49,971	62	215	49,971	66	240
98	47,973	60	211	47,973	64	237
105	45,974	57	207	45,974	61	233
112	43,725	54	202	43,725	59	230
125	39,977	48	192	39,727	54	221
138	36,229	41	178	35,480	49	211
151	32,481	34	161	31,232	43	198
164	28,983	24	137	27,734	37	182
177				24,986	29	162
S-21	MAIN BOOM : 69 FT at 85 degrees					85%
RADIUS FEET	207 FT N=63 LUFFER	LUFFER ANGLE	LUFFER TIP HT	230 FT N=70 LUFFER	LUFFER ANGLE	LUFFER TIP HT
72	44,974	75	271			
79	43,725	73	270	34,980	74	294
85	42,476	71	267	33,731	73	291
92	41,226	69	265	32,731	71	289
98	39,977	67	262	31,732	69	287
105	38,728	65	259	30,982	67	284
112	37,479	63	256	29,733	66	281
125	34,730	59	256	27,734	62	275
138	32,232	54	249	25,735	58	268
151	29,233	50	240	24,486	54	259
164	26,235	45	230	21,738	50	249
177	23,487	39	218	19,739	46	237
190	20,988	33	203	17,740	41	223
203	18,989	26	185	15,741	36	206
217			161	13,992	30	186
230				11,743	22	158

LIEBHERR LG 1200 LUFFING JIB

ALL LUFFING CHARTS: FULL CWT, SUPPORTED, 360 DEGREE SWING RADIUS

S-28	MAIN BOOM : 92 FT at 85 degrees					85%
RADIUS FEET	69 FT N=21 LUFFER	LUFFER ANGLE	LUFFER TIP HT	92 FT N=28 LUFFER	LUFFER ANGLE	LUFFER TIP HT
36	159,908	75	163.4			
39	157,160	73	161.1			
43	147,416	70	159.8			
46	145,667	67	158.5	121,181	73	183
52	127,427	61	155.5	113,935	69	181
59	109,937	54	151.2	102,441	64	178
66	94,946	47	145.7	89,949	59	174
72	87,700	39	138.8	80,704	55	170
79	80,954	30	129.3	73,958	49	165
85				68,711	44	158
92				63,963	37	151
98				59,216	30	141
105				54,969	20	127
S-28	MAIN BOOM : 92 FT at 85 degrees					85%
RADIUS FEET	115 FT N=35 LUFFER	LUFFER ANGLE	LUFFER TIP HT	138 FT N=42 LUFFER	LUFFER ANGLE	LUFFER TIP HT
52	101,192	73	205.1			
59	95,945	70	202.8	74,957	73	227
66	89,449	66	200.1	71,959	70	225
72	80,704	62	196.8	68,961	67	222
79	67,711	59	193.2	65,463	64	219
85	65,962	55	189.0	61,215	61	216
92	59,966	51	183.7	56,218	58	212
98	54,969	46	177.8	51,970	55	208
105	46,973	31	170.6	48,472	51	202
112	43,975	36	163.1	44,974	48	197
125	41,226	23	139.8	39,477	40	183
138				34,980	30	165

LIEBHERR LG 1200 LUFFING JIB

ALL LUFFING CHARTS: FULL CWT, SUPPORTED, 360 DEGREE SWING RADIUS

S-28	MAIN BOOM : 92 FT AT 85 DEGREES					85%
RADIUS FEET	161 FT <small>N=49</small> LUFFER	LUFFER ANGLE	LUFFER TIP HT	184 FT <small>N=56</small> LUFFER	LUFFER ANGLE	LUFFER TIP HT
66	56,218	73	249.0			
72	53,969	71	247.0	53,969	73	271
79	51,471	68	244.4	51,471	71	269
85	49,472	66	241.5	49,472	69	266
92	47,473	63	238.5	47,473	67	264
98	44,974	60	234.9	44,974	64	261
105	42,476	58	231.0	42,476	62	258
112	39,977	55	226.7	39,977	60	254
125	34,980	49	216.2	34,980	55	245
138	31,232	42	203.4	31,232	50	235
151	27,734	35	187.0	27,734	44	223
164	24,986	25	164.0	24,986	38	208
177				22,487	31	188
190				20,488	21	161
S-28	MAIN BOOM : 92 FT at 85 degrees					85%
RADIUS FEET	207 FT <small>N=63</small> LUFFER	LUFFER ANGLE	LUFFER TIP HT	230 FT <small>N=70</small> LUFFER	LUFFER ANGLE	LUFFER TIP HT
79	41,476	73	293.0	31,982	75	317
85	40,477	71	291.0	31,232	73	315
92	39,228	69	288.7	30,483	71	313
98	37,978	67	286.1	29,483	70	311
105	36,979	65	283.1	28,484	68	308
112	35,730	63	279.9	27,484	66	305
125	32,481	59	272.3	25,735	63	299
138	28,234	55	264.1	23,986	59	292
151	24,986	50	254.3	21,987	55	283
164	22,487	45	242.5	20,488	51	273
177	19,989	40	228.0	18,489	46	261
190	17,990	34	210.6	16,740	42	248
203	16,241	27	188.3	14,991	37	232
217				13,242	31	212
230				11,493	23	186

LIEBHERR LG 1200 LUFFING JIB

ALL LUFFING CHARTS: FULL CWT, SUPPORTED, 360 DEGREE SWING RADIUS

S-35/42	MAIN BOOM :115 FT AND 138 FT at 85 degrees					85%
RADIUS FEET	69 FT N=21 LUFFER	LUFFER ANGLE	LUFFER TIP HT	92 FT N=28 LUFFER	LUFFER ANGLE	LUFFER TIP HT
46	130,425	69 or 70	182 or 206	106,189	72 or 74	206 or 231
52	117,433	63 or 65	179 or 203	100,942	70 or 71	204 or 228
59	101,192	56 or 58	176 or 199	94,946	65 or 67	202 or 225
66	89,949	49 or 52	171 or 195	85,951	61 or 62	198 or 222
72	82,953	42 or 44	164 or 189	76,956	56 or 58	194 or 219
79	76,456	33 or 36	156 or 181	69,460	51 or 53	189 or 214
85	69,960	21 or 25	142 or 170	62,964	45 or 47	183 or 208
92				57,967	39 or 41	176 or 201
98				53,469	32 or 35	167 or 193
S-35/42	MAIN BOOM :115 FT AND 138 FT at 85 degrees					85%
RADIUS FEET	115 FT N=36 LUFFER	LUFFER ANGLE	LUFFER TIP HT	138 FT N=42 LUFFER	LUFFER ANGLE	LUFFER TIP HT
52	84,951	73 or 74	228 or 250			
59	80,954	70 or 71	226 or 248	64,963	73 or 74	251 or 274
66	77,206	66 or 67	224 or 245	62,464	70 or 71	248 or 272
72	72,958	62 or 63	221 or 241	59,966	67 or 68	246 or 270
79	66,962	59 or 60	217 or 237	57,467	64 or 65	243 or 267
85	61,215	55 or 56	213 or 233	54,969	61 or 62	240 or 264
92	56,218	51 or 52	208 or 227	52,470	58 or 59	236 or 260
98	51,970	46 or 48	203 or 221	49,472	55 for 56	232 or 256
105	48,472	31 or 33	196 or 218	46,224	51 or 52	227 or 246
112	45,474	36 or 38	188 or 214	42,726	48 or 49	222 or 238
125	39,977	23 or 25	167 or 194	37,479	40 or 41	209 or 234
138				33,231	30 or 32	191 or 217
151				29,483	19	163 or 192

LIEBHERR LG 1200 LUFFING JIB

ALL LUFFING CHARTS: FULL CWT, SUPPORTED, 360 DEGREE SWING RADIUS

S-35/42	MAIN BOOM :115 FT AND 138 FT at 85 degrees					85%
RADIUS FEET	161 FT N₂⁴⁹ LUFFER	LUFFER ANGLE	LUFFER TIP HT	184 FT N₂⁵⁶ LUFFER	LUFFER ANGLE	LUFFER TIP HT
66	47,473	74 or 75	273 or 296			
72	46,224	71 or 72	270 or 294	46,224	74	295 or 318
79	44,974	69 or 70	268 or 292	44,974	72	293 or 316
85	43,225	66 or 67	265 or 289	43,225	69	290 or 314
92	41,726	64 or 65	262 or 286	41,726	67	288 or 311
98	40,227	61 or 62	259 or 283	40,227	65	285 or 308
105	38,728	58 or 59	255 or 279	38,728	63	281 or 305
112	36,979	56 or 57	251 or 274	36,479	60	278 or 302
125	33,981	50 or 51	241 or 265	32,481	56	270 or 294
138	30,982	43 or 44	228 or 253	28,234	50	260 or 284
151	27,984	36 or 37	213 or 238	24,986	45	248 or 273
164	24,986	27 or 29	191 or 218	22,237	39	233 or 259
177				19,989	32	215 or 240
190				18,240	23	189 or 217
S-35/42	MAIN BOOM :115 FT AND 138 FT at 85 degrees					85%
RADIUS FEET	207 FT N₂⁶³ LUFFER	LUFFER ANGLE	LUFFER TIP HT	230 FT N₂⁷⁰ LUFFER	LUFFER ANGLE	LUFFER TIP HT
79	34,980	74	313 or 340			
85	33,981	72	314 or 338	26,985	74	339 or 362
92	33,231	70	312 or 336	26,485	73	337 or 360
98	32,232	68	310 or 333	25,735	71	334 or 358
105	30,982	67	307 or 331	24,236	67	332 or 353
112	30,483	64	304 or 328	23,487	65	329 or 350
125	28,484	60	297 or 321	22,737	63	323 or 347
138	25,985	56	288 or 313	21,238	60	316 or 340
151	22,987	51	279 or 303	19,739	56	307 or 332
164	20,488	46	267 or 292	17,990	52	298 or 322
177	18,489	41	253 or 279	15,991	48	286 or 311
190	16,740	35	237 or 262	14,242	43	273 or 298
203	14,991	28	215 or 241	12,743	38	258 or 283
217	13,742	19	184 or 213	11,493	32	238 or 264
230				10,244	26	214 or 241

LIEBHERR LG 1200 LUFFING JIB

ALL LUFFING CHARTS: FULL CWT, SUPPORTED, 360 DEGREE SWING RADIUS

S-35/42 49/51		MAIN BOOM :161 FT AND 184 FT at 85 degrees					85%
RADIUS FEET	69 FT N=21 LUFFER	LUFFER ANGLE	LUFFER TIP HT	92 FT N=20 LUFFER	LUFFER ANGLE	LUFFER TIP HT	
46	102,441	72	229 or 253				
52	95,445	66	227 or 251	77,456	74	251 or 275	
59	87,450	60	224 or 248	73,708	69	249 or 273	
66	77,955	54	219 or 244	69,960	65	246 or 270	
72	69,960	47	214 or 239	65,712	60	242 or 267	
79	63,714	38	207 or 232	59,966	56	238 or 262	
85	57,967	29	197 or 223	54,469	50	233 or 258	
92				49,971	45	227 or 252	
98				46,224	39	219 or 244	
105				43,475	23	194 or 222	
112				40,477			
S-35/42 49/51		MAIN BOOM :161 FT AND 184 FT at 85 degrees					85%
RADIUS FEET	115 FT N=35 LUFFER	LUFFER ANGLE	LUFFER TIP HT	138 FT N=47 LUFFER	LUFFER ANGLE	LUFFER TIP HT	
59	67,461	73	274 or 297				
66	64,463	69	271 or 295	52,470	73	296 or 319	
72	60,465	66	268 or 292	50,471	70	293 or 317	
79	54,969	62	265 or 289	48,722	67	291 or 314	
85	50,221	58	261 or 285	46,973	64	288 or 312	
92	46,224	54	257 or 281	44,225	61	284 or 308	
98	42,975	50	252 or 277	40,977	58	281 or 304	
105	40,227	46	246 or 274	37,728	55	276 or 300	
112	37,479	41	239 or 271	35,480	51	271 or 295	
125	33,481	30	220 or 264	30,982	44	259 or 284	
138				27,484	35	242 or 269	
151				24,986	24	219 or 247	

LIEBHERR LG 1200 LUFFING JIB

ALL LUFFING CHARTS: FULL CWT, SUPPORTED, 360 DEGREE SWING RADIUS

S-38742 ^{49/54}		MAIN BOOM :161 FT AND 184 FT at 85 degrees				85%	
RADIUS FEET	161 FT N=49 LUFFER	LUFFER ANGLE	LUFFER TIP HT	184 FT N=56 LUFFER	LUFFER ANGLE	LUFFER TIP HT	
72	42,476	73	318 or 341				
79	41,226	70	315 or 339	35,480	73	340 or 363	
85	39,727	68	313 or 337	34,480	71	337 or 361	
92	38,228	65	310 or 334	33,481	69	335 or 359	
98	36,979	63	307 or 331	29,733	66	332 or 356	
105	34,730	60	303 or 327	27,984	64	329 or 353	
112	32,481	57	299 or 323	25,985	62	326 or 350	
125	27,984	52	290 or 314	24,486	57	318 or 342	
138	24,986	45	278 or 303	21,987	52	309 or 333	
151	22,487	38	263 or 289	18,989	47	298 or 322	
164	20,238	30	244 or 270	16,990	41	284 or 309	
177	18,240	19	215 or 244	14,991	34	266 or 292	
190				13,492	26	244 or 271	
S-38742 ^{49/54}		MAIN BOOM :161 FT AND 184 FT at 85 degrees				85%	
RADIUS FEET	207 FT N=63 LUFFER	LUFFER ANGLE	LUFFER TIP HT	230 FT N=70 LUFFER	LUFFER ANGLE	LUFFER TIP HT	
85	27,984	73	362 or 385				
92	26,985	71	359 or 383	22,487	73	384 or 407	
98	26,485	69	357 or 381	21,987	71	382 or 405	
105	25,735	67	354 or 378	21,238	70	379 or 403	
112	24,986	65	351 or 375	20,738	68	377 or 400	
125	22,237	61	345 or 369	19,489	64	371 or 395	
138	18,989	57	337 or 361	17,240	61	364 or 388	
151	16,491	52	328 or 352	14,492	57	356 or 380	
164	14,492	48	317 or 342	12,243	53	346 or 371	
177	12,993	43	303 or 329	10,744	48	336 or 360	
190	11,993	37	288 or 313	9,245	44	323 or 348	
203	9,994	30	268 or 294	7,995	39	308 or 334	
217	8,995	22	241 or 269	6,996	33	290 or 316	
230				6,246	27	268 or 294	
243				5,247	18	236 or 265	

LIEBHERR LG 1200 LUFFING JIB

ALL LUFFING CHARTS: FULL CWT, SUPPORTED, 360 DEGREE SWING RADIUS

NOTE: All main/luffing jib combinations with main boom exceeding 161 ft require attaching the slewing platform (house) to the deck while erecting the boom.

S-63	MAIN BOOM :207 FT at 85 degrees					85%
RADIUS FEET	69 FT N=24 LUFFER	LUFFER ANGLE	LUFFER TIP HT	92 FT N=28 LUFFER	LUFFER ANGLE	LUFFER TIP HT
45	83,000	75	278			
52	82,453	70	274			
59	77,456	64	272	66,212	71	296
66	69,960	58	268	63,214	66	294
72	62,964	51	263	59,216	62	291
79	57,217	44	257	53,969	57	287
85	52,470	35	249	49,472	52	282
92	48,472	24	238	45,474	47	277
98				42,476	41	270
105				39,477	33	260
112				36,479	26	250
S-63	MAIN BOOM :207 FT at 85 degrees					85%
RADIUS FEET	115 FT N=35 LUFFER	LUFFER ANGLE	LUFFER TIP HT	138 FT N=42 LUFFER	LUFFER ANGLE	LUFFER TIP HT
59	61,215	74	321			
66	58,467	71	319	49,971	75	343
72	55,468	68	316	47,973	72	341
79	51,221	64	313	45,974	69	338
85	46,723	61	310	42,975	66	335
92	42,726	57	306	39,477	63	332
98	39,228	53	301	36,229	60	328
105	36,229	48	295	33,731	56	324
112	33,481	44	289	31,482	53	320
125	29,483	33	273	27,484	46	309
138				24,486	38	294
151				21,738	28	274

LIEBHERR LG 1200 LUFFING JIB

ALL LUFFING CHARTS: FULL CWT, SUPPORTED, 360 DEGREE SWING RADIUS

⁶³ S-38/42	MAIN BOOM :207 FT at 85 degrees					85%
RADIUS FEET	161 FT N=49 LUFFER	LUFFER ANGLE	LUFFER TIP HT	184 FT N=56 LUFFER	LUFFER ANGLE	LUFFER TIP HT
72	42,476	74	364			
79	40,977	72	363	31,982	74	386
85	38,978	69	360	31,232	72	385
92	36,479	67	358	29,983	70	382
98	33,481	64	355	28,734	68	380
105	30,982	62		26,485	66	377
112	28,484	59	348	24,736	63	374
125	24,736	53	339	21,238	59	366
138	21,488	47	328	18,489	54	358
151	19,239	41	314	15,991	48	347
164	16,990	33	297	13,992	43	334
177	15,241	23	272	12,243	36	318
190				10,744	29	297
⁶³ S-35/42	MAIN BOOM :207 FT at 85 degrees					85%
RADIUS FEET	207 FT N=63 LUFFER	LUFFER ANGLE	LUFFER TIP HT	230 FT N=70 LUFFER	LUFFER ANGLE	LUFFER TIP HT
85	24,986	74	408			
92	24,486	72	406	20,988	74	439
98	23,986	70	404	20,488	72	428
105	22,987	68	401	19,739	71	426
112	21,987	66	399	18,989	69	424
125	18,989	62	393	16,491	65	418
138	15,991	58	385	13,992	62	412
151	13,742	54	376	11,993	58	404
164	11,743	49	366	9,994	54	395
177	10,244	44	354	8,495	50	385
190	8,995	39	339	6,996	45	373
203	7,746	32	320	5,997	41	359
217	6,746	25	296	4,997	35	342
230				4,248	29	321
243				3,498	21	293

Die Traglasten am Schwerlastausleger.

Lifting capacities at heavy-duty jib.

Forces de levage à la flèche charges lourdes.

Auslegerlängen: 14 m – 91 m. Arbeitszustand: abgestützt. Rüstzustand I und II.

Jib lengths: 14 m – 91 m. Working condition: with supports. Equipment condition I and II.

Longueurs de flèche: 14 m – 91 m. Machine calée. Equipement I et II.

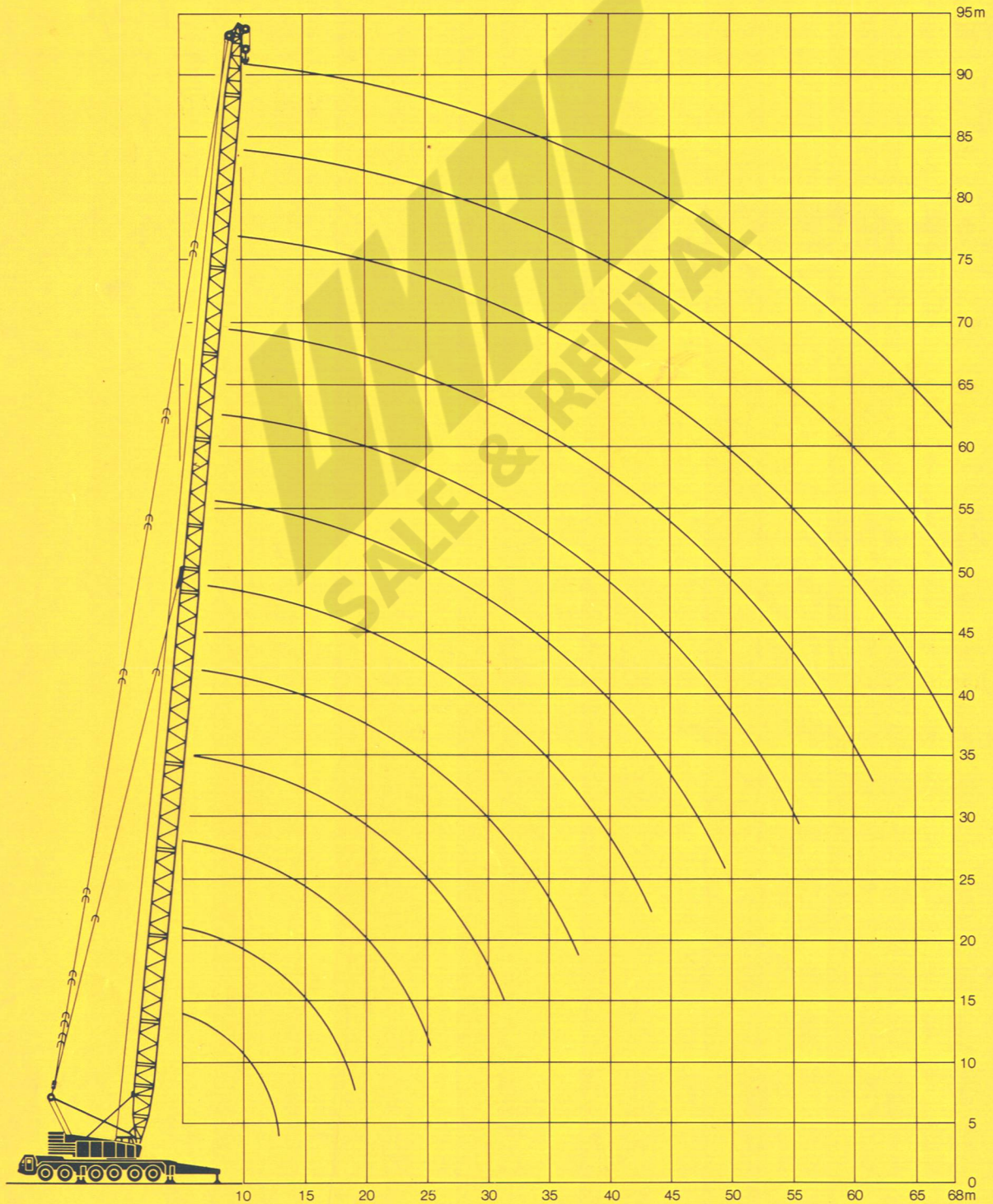
Ausladung Radius Portée	14 m		21 m		28 m		35 m		42 m		49 m		56 m		63 m		70 m		77 m		84 m		91 m	
	nach hinten to rear en ar- rière	nach hinten to rear en ar- rière	nach hinten to rear en ar- rière	nach hinten to rear en ar- rière	nach hinten to rear en ar- rière	nach hinten to rear en ar- rière	nach hinten to rear en ar- rière	nach hinten to rear en ar- rière	nach hinten to rear en ar- rière	nach hinten to rear en ar- rière	nach hinten to rear en ar- rière	nach hinten to rear en ar- rière	nach hinten to rear en ar- rière	nach hinten to rear en ar- rière	nach hinten to rear en ar- rière	nach hinten to rear en ar- rière	nach hinten to rear en ar- rière	nach hinten to rear en ar- rière	nach hinten to rear en ar- rière	nach hinten to rear en ar- rière	nach hinten to rear en ar- rière	nach hinten to rear en ar- rière	nach hinten to rear en ar- rière	nach hinten to rear en ar- rière
m	360°	360°	360°	360°	360°	360°	360°	360°	360°	360°	360°	360°	360°	360°	360°	360°	360°	360°	360°	360°	360°	360°	360°	360°
4	200	200																						
4,5	180	180	180	180																				
5	170	170	170	170	158	158																		
5,5	158	158	158	158	155	155	130	130																
6	146	146	146	146	146	146	126	126	107	107														
6,5	136	136	136	136	136	136	123	123	105	105														
7	127	127	127	127	127	127	121	121	102	102	93	93												
7,5	118	118	118	118	118	118	116	116	100	100	91	90	83,5	83,5										
8	112	112	112	112	112	112	112	112	97	97	88,5	88,5	82	82	67,5	67,5								
8,5	106	106	106	106	106	106	106	106	95	95	86,5	86	80,5	80,5	66,5	66,5								
9	100	100	100	100	100	100	100	100	93	93	84,5	84,5	79	79	65	65	54	54						
10	90	90	90	90	90	90	90	90	88	88	80	80	75,5	76	63	63	52,5	52,5	44	44				
12	74	74	74	74	74	74	74	74	74	74	67	70	66	69	58,5	58,5	49,5	49,5	41,5	41,5	38	38		
14	64	64	62	63	61	61	61	61	61	61	56	60	55,5	60	53	53	46,5	46,5	39,5	39,5	36	36	30	30
16			52	54	51	51	51	51	51	51	48,5	51	48	51	46	48,5	43	43	37	37	33	33	28	28
18			44	46	43	44	43	44	43	44	42	44	41,5	44	39,5	42	38	39	34,5	35	30	30	26	26
20			38	39	37	39	37	39	37	39	36,5	38,5	36	38	35,5	36,5	33	34	30	32	28	28	24	24
22					32	35	32	35	32	34,5	32	34	31,5	33,5	31	32	29	30	27	28,5	26	26	23	23
24					29	31	29	31	29	30,5	28,5	29,5	28	29	27,5	28	26	27,5	24,5	25,5	24	24,5	21	21
26					26	27,5	26	27,5	25,5	27	25	26,5	25	26	24,5	25	23	24,5	22	23,5	22	23	19,5	19,5
28							23	24,5	22,5	24	22,5	23,5	22	23	21,5	22,7	20,5	22	19,5	21,2	20	21	18	18
30							21	22	20,5	22	20	21,5	19,5	20,5	19	20	18	19,5	17,5	19	18	19	16,5	17
32							19	20	18,5	20,5	18	20	17,5	18	17	18	16	17	15,5	17	16,5	17,5	15	16
34									17	18,5	16,5	18	16	16,5	15	16	14,5	15,5	14	15	14,5	16	13,5	15
36									15,5	17	15	16,5	14,5	15	13,5	14,5	13	14	12,5	13,5	13	14	11,5	12
38									14	15,5	14	15	13,5	14	12	13	11,5	12,6	11	11,6	11,5	12	10,5	11,5
40											13	14	12	13	11	12	10,5	11,5	10	10,8	10	11	9	10
42											11,9	12,7	11	11,5	10	11	9	10,2	8,5	9,2	9,2	9,8	8,1	9
44											10,8	11,7	10	10,8	9	10	8	9	7,5	8,6	8,2	8,8	7,1	8
46													9	10	8	8,8	7,5	8,1	7	7,7	7,2	8	6,1	7
48													8	9	7,5	8	6,5	7,5	6	6,8	6,4	7	5,3	6
50													7,5	8,3	7	7,2	6	6,2	5	5,8	5,6	6	4,5	5,3
52															6	6,5	5	5,8	4,5	5,5	5	5,5	3,7	4,5
54															5,5	6	4,5	5	4,2	5	4,2	5	3,2	3,8
56															5	5,2	4	4,5	4	4,5	3,6	4,5	2,5	3
58																	3,6	4	3,5	4	3	3,5	2	2,5
60																	3,2	3,5	3	3,5	2,5	3	1,5	2,3
62																	2,5	3	2,5	3	2	2,5	1	1,7
64																		2	2,5					
66																		1,5	2					
68																		1,1	1,7					

Die Hubhöhen. Lifting heights. Hauteurs de levage.

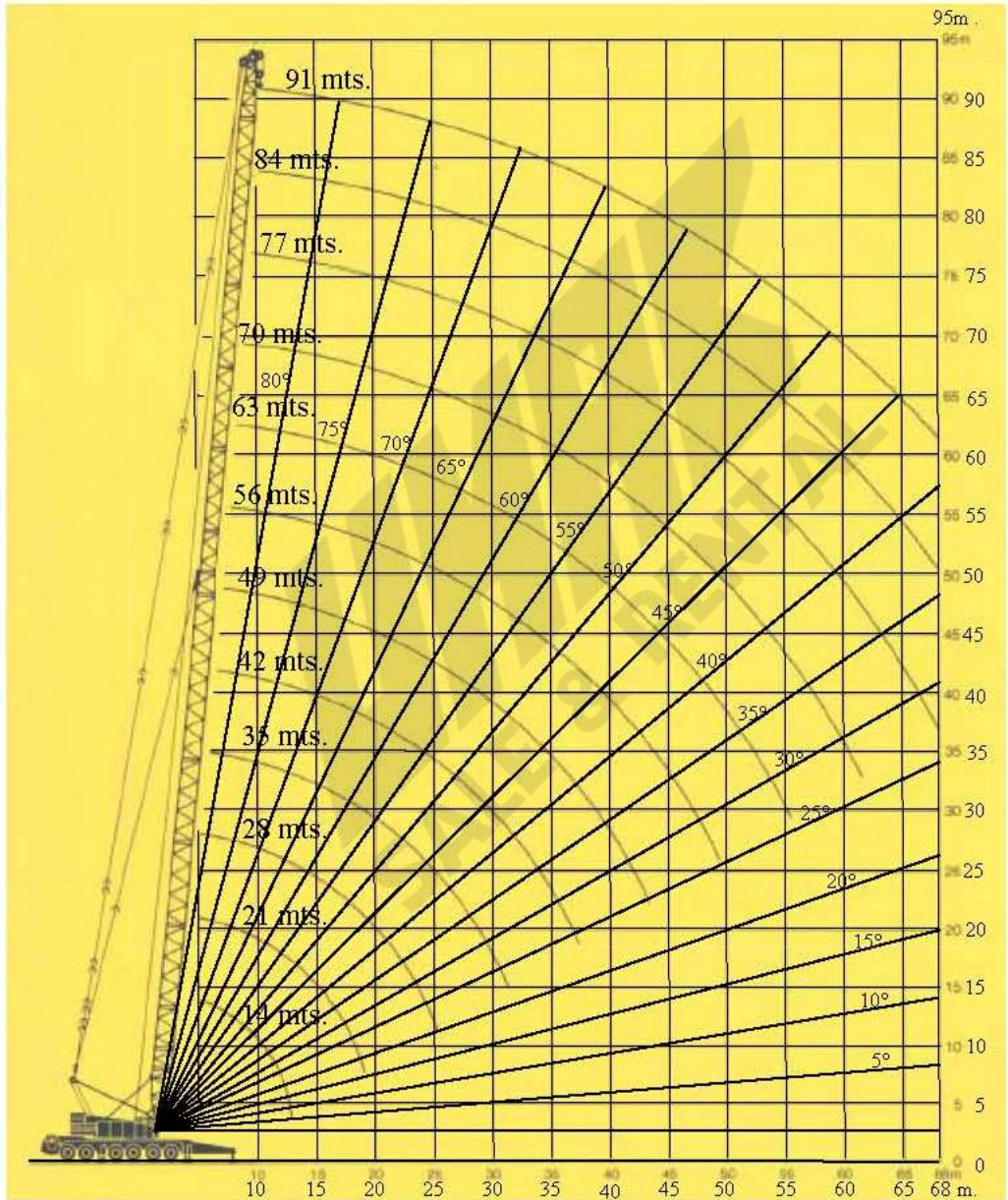
Ausleger »S«.

With »S« jib.

Flèche charges lourdes »S«.



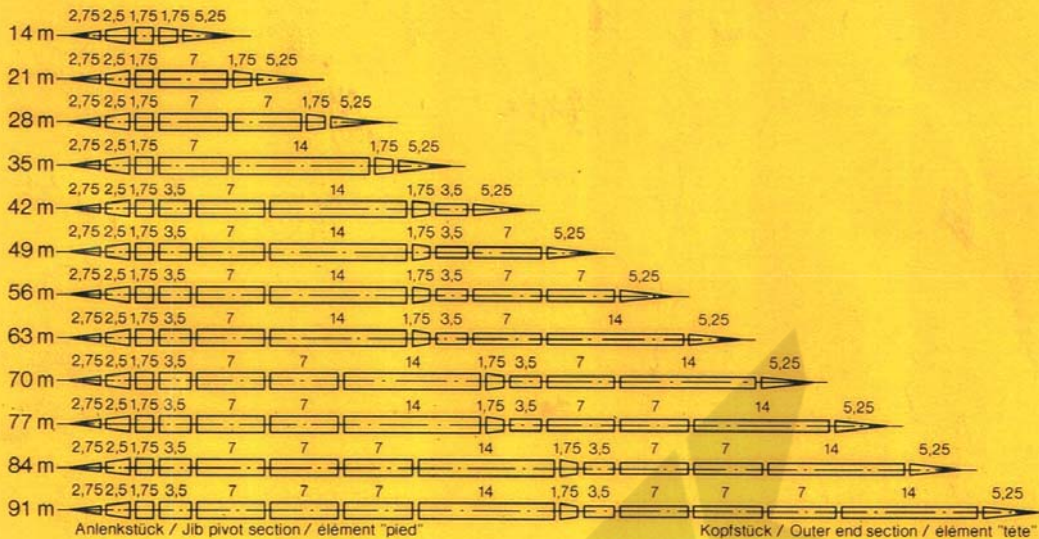
RANGE DIAGRAM LIEBHERR LG 1200



Das S-Ausleger-System.

The »S« jib system.

Système de la flèche charges lourdes »S«.



Mit 7 m und 14 m
Zwischenstücken.

With 7 m and 14 m
intermediate sections.

Avec des éléments intermédiaires
de 7 m et de 14 m.

Ab 56 m Zusatz-
abspannung.

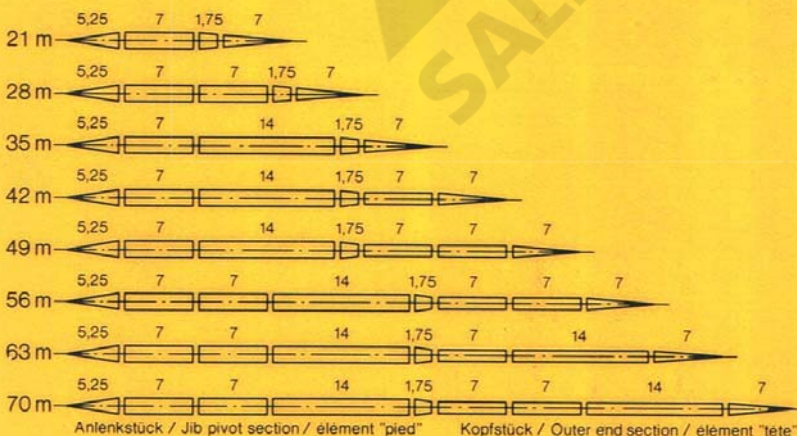
From 56 m additional
guying.

De 56 m tirant
supplémentaire.

Das N-Ausleger-System.

The »N« jib system.

Système de la flèche auxiliaire à volée variable »N«.



Mit 7 m und 14 m
Zwischenstücken.

With 7 m and 14 m
intermediate sections.

Avec des éléments intermédiaires
de 7 m et de 14 m.

Ab 56 m Zusatz-
abspannung.

From 56 m additional
guying.

De 56 m tirant
supplémentaire.

Anmerkungen:

Die Montagefolge der einzelnen Auslegererteile ist gemäß Abbildungen vorgeschrieben.

Notes:

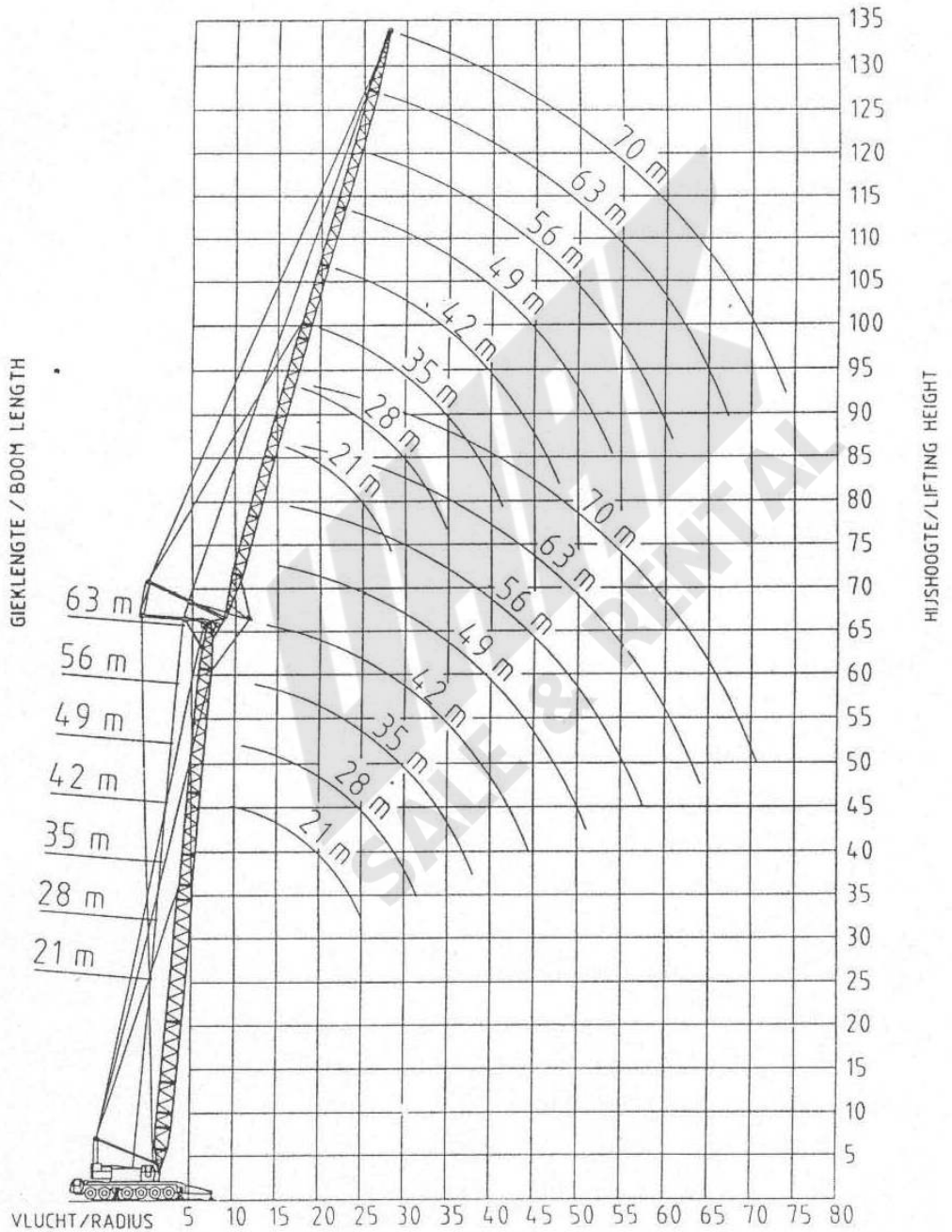
Sequence of assembly for the various sections of the jib must be as illustrated.

Remarques:

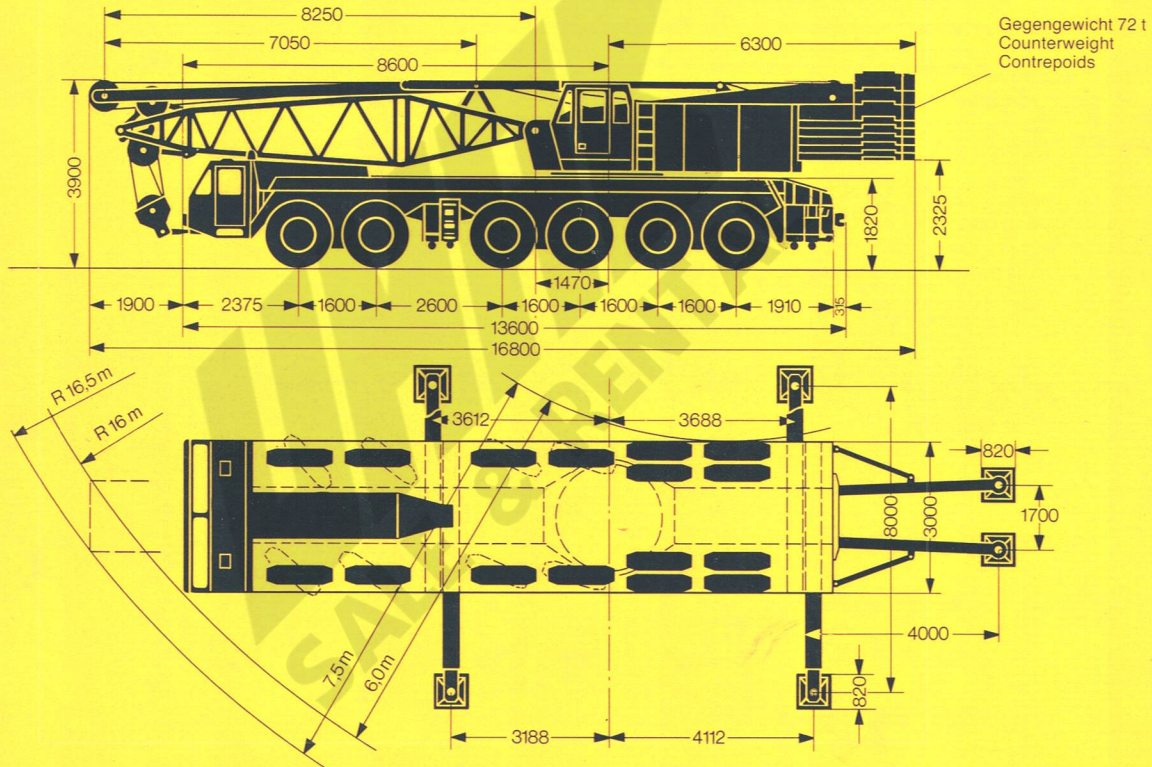
Les différents éléments de la flèche doivent être assemblés dans l'ordre indiqué sur l'illustration.

RANGE DIAGRAM

LIEBHERR LG 1200



Die Maße, Gewichte und Geschwindigkeiten. Dimensions, weights and working speeds. Encombremets, poids et vitesses.



Die Lastaufnahmemittel.

Traglasten t	Anzahl der Rollen	Anzahl d. Stränge	Gewicht kg
200	9	19	2500
130	6	13	2100
70	3	7	1850
10	—	1	650

Anmerkungen zu den Traglaststabellen.

1. Die angegebenen Traglasten überschreiten nicht 75 % der Kipplast.
2. Die Standsicherheit 75 % ist unter Berücksichtigung der Windstärke $g = 25 \text{ kp/m}^2$ Staudruck bzw. 20 m/s Windgeschwindigkeit errechnet.
3. Die Traglasten sind in Tonnen angegeben.
4. Die Traglasten 75 % entsprechen den Vorschriften DIN 15019 Blatt 2 und der FEM.
5. Das Gewicht des Lastaufnahmemittels ist von den Traglasten abzuziehen.
6. Die Ausladung ist von Mitte Drehkranz gemessen.
7. Das Ballastgewicht beträgt ca. 72 t.
8. Die angegebenen Traglasten gelten für den Rüstzustand I = abgestützt, 360° („S“- und „SN“-Betrieb) und Rüstzustand II = abgestützt, $2 \times 10^\circ$ nach hinten („S“-Betrieb).
9. Für folgende Rüstzustände können Traglastwerte angefordert werden:
Rüstzustand III = abgestützt, $2 \times 10^\circ$ nach hinten, 33 t Ballast („S“-Betrieb);
Rüstzustand IV = abgestützt, 360° , 33 t Ballast, („S“- und „SN“-Betrieb);
Rüstzustand V = abgestützt, $2 \times 10^\circ$ nach hinten, ohne Ballast („S“-Betrieb);
Rüstzustand VI = abgestützt 360° , ohne Ballast, („S“-Betrieb);
10. Traglastangaben für die Auslegerkombination „SN wippbar“ mit 2-Hakenbetrieb auf Anfrage.

Upper machinery.

Frame:	Liebherr-made, torsion-resistant, welded construction made of high-tensile structural steel. Connection to crane carrier by triple roller slewing ring, make Rothe Erde, designed for 360° continuous rotation.												
Crane engine:	Diesel, 8 cylinder, watercooled, make Daimler-Benz, type OM 402, output 188 kW DIN (256 HP) at 2500 min ⁻¹ . Max. torque 834 Nm at 1400 min ⁻¹ . Fuel supply: 420 litres.												
Crane drive:	Diesel-hydraulic, with 4 variable pitch axial piston pumps featuring output control; 1 feed pump, 1 auxiliary pump for servo control system.												
Crane control:	Electro-hydraulic, with all working movements controlled by self-centering joystick levers. Additional speed control by varying diesel engine running speed.												
Hoisting gear I and II:	2 identical hoisting gear mechanisms, comprising: hydraulic motor, rope drum with planetary gears, spring action multi disc brake with hydraulic release.												
Luffing gear:	Comprises: 2 hydraulic motors, rope drum with 2 planetary gearboxes and 2 spring-action multi disc brake with hydraulic release.												
Fly jib derricking gear:	Comprises: hydraulic motor, rope drum with planetary gears and spring-action multi disc brake with hydraulic release.												
Slewing gear:	Comprises: hydraulic motor, planetary gears, slewing ring pinion and spring-action multi disc brake with hydraulic release; emergency hydraulic brake release mechanism also provided.												
Ballasting equipment:	Hydraulic loading and unloading system for the ballast.												
Crane operator's cab:	All-steel construction with safety glass windows; cab can be run out sideways and tilted rearwards. Heater and full range of instruments installed.												
Safety devices:	Hoist limit switches, jib fall-back protection, jib angle indicator, wind gauge, lifting moment limiter.												
Jibs:	<table><tr><td>Heavy-duty jib</td><td>(S):</td><td>8 - 91 m</td></tr><tr><td>Fly jib</td><td>(N):</td><td>21 - 70 m</td></tr><tr><td>SN combination</td><td>(S):</td><td>21 - 63 m</td></tr><tr><td>luffing</td><td>(N):</td><td>21 - 70 m</td></tr></table>	Heavy-duty jib	(S):	8 - 91 m	Fly jib	(N):	21 - 70 m	SN combination	(S):	21 - 63 m	luffing	(N):	21 - 70 m
Heavy-duty jib	(S):	8 - 91 m											
Fly jib	(N):	21 - 70 m											
SN combination	(S):	21 - 63 m											
luffing	(N):	21 - 70 m											

Truck chassis.

Frame:	Liebherr designed and manufactured, box type, torsion resistant, all-welded construction made of high-tensile structural steel.
Outriggers:	4 sliding beams with hydraulic extension cylinders and hydraulic support pad jacks; support base area: 7,3 m × 8 m. Front outriggers mounted between axles 2 and 3, rear outriggers at rear of truck chassis.
Engine:	Diesel, 12 cylinder, watercooled, make Daimler-Benz, type OM 404, output 316 kW DIN (430 HP) at 2500 min ⁻¹ . Max. torque 1353 Nm at 1600 min ⁻¹ . Fuel supply: 375 litres.
Transmission:	Allison Type CLBT 750 automatic transmission with torque converter, planetary gear trains and hydrodynamic retarder brake. 5 forward speeds, 1 reverse. Splitter gearbox with differential and off-road range.
Axles:	Heavy duty crane truck axles, all 6 axles sprung. Axles 1 to 4 steered. Axles 1, 2, 5 and 6 have planetary reduction gears and inter-axle differentials.
Suspension:	Axles 1 and 2 and 5 and 6 coil-sprung and mounted on tandem compensating beams. Axles 3 and 4 hydraulically sprung, with variable axle load facility. All axles provided with hydraulic locking without sacrificing balance-beam action between the above-mentioned axle pairs.
Tyres:	16 tyres: axles 1 to 4 with single tyres, axles 5 and 6 with twin tyres. Tyre size: 14.00-24, 22 PR.
Steering:	ZF semi-unitary hydraulic power steering with 2 pump circuits. Main pump circuit driven from engine, auxiliary pump circuit from final drive.
Brakes:	Service brake: servo assisted air brakes acting on all wheels. Twin pipe, dual circuit system. Handbrake: spring-action, acting on all wheels of axles 2 - 6. Retarder: hydrodynamic brake in transmission, not subject to wear.
Driver's cab:	Large-area, all-steel cab with resilient mountings, safety glass windows and full range of instruments.
Electrical system:	24 volts d. c., 2 batteries, lighting in accordance with German road regulations.

Die Fahrgeschwindigkeiten bei Motordrehzahl $n = 2100 \text{ min}^{-1}$.Road speeds at engine speed $n = 2100 \text{ min}^{-1}$.Vitesses de translation le moteur à $n = 2100 \text{ min}^{-1}$.

Gang Gear ratio Rapport	1	2	3	4	5	R Rev. AR
Geschwindigkeit Straße km/h On-road speed km/h Vitesse route km/h	12,7	20,5	31,7	46,8	65,6	14,6
Geschwindigk. Gelände km/h Off-road speed km/h Tout terrain vitesse km/h	5	12,8	20	29	41	9

Die Krangeschwindigkeiten bei Motordrehzahl $n = 2500 \text{ min}^{-1}$.Crane speeds at engine speed $n = 2500 \text{ min}^{-1}$.Vitesses de la grue le moteur à $n = 2500 \text{ min}^{-1}$.

Antriebe Drive Entrainement	Hubwerk 1 Lifting gear 1 Mécanisme de levage 1	Hubwerk 2 Lifting gear 2 Mécanisme de levage 2	Einziehwerk Luffing gear Mécanisme de relevage	Nadelverstellwerk Luffing jib control Treuil de volée variable	Drehwerk Slewing gear Orientation
Geschwindigkeiten stufenlos regelbar m/min Speed continuously variable m/min Vitesses réglables en continu m/mn	0 – 120	0 – 120	2 × 32	0 – 55	0 – 1,6 min^{-1}
Max. Seilzug kN Max. rope tension kN Effort. max. sur brin kN	100	100	2 × 140	120	
Seillänge/Seildurchmesser Rope length/Rope diameter Longueur de câble/Diamètre de câble	540 m/25 mm \emptyset	380 m/25 mm \emptyset	2 × 225 m/25 mm \emptyset	280 m/25 mm \emptyset	

Die Lastaufnahmemittel.

Load lifting gears.

Moufles et crochets.

Traglast t Capacity t Capacité t	Anzahl der Rollen Number of pulleys Nombre de poulies	Anzahl der Seilstränge Number of rope runs Nombre de brins	Gewicht kg Weight kg Poids kg
200	10	20	3450
130	6	13	2200
70	3	7	1850
10	–	1	550