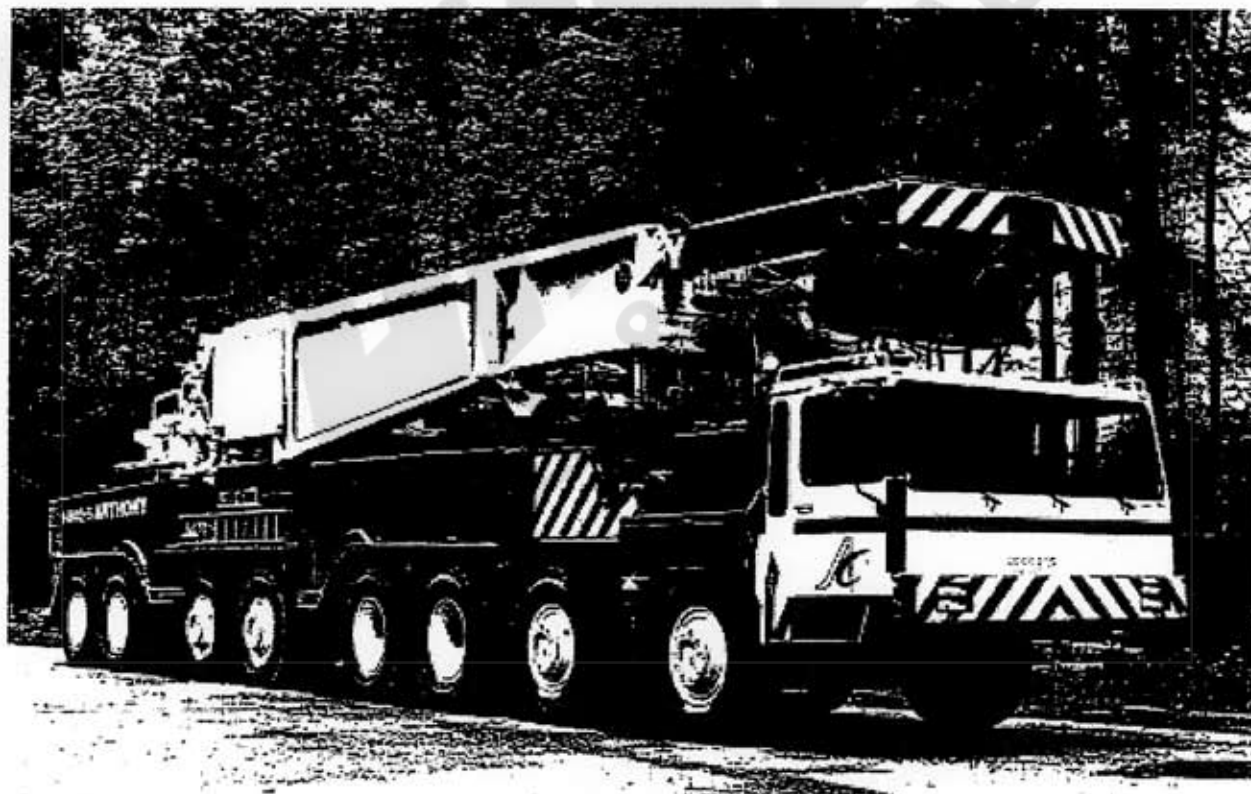


LIEBHERR

LG/LTM 11000

1000 TON COMPLETELY ROADABLE CRANE
325 ft MAIN BOOM - 300 ft JIB



Technical description.

Truck chassis.

Frame:	Liebherr designed and manufactured, box type, torsion resistant, all-welded construction made of high-tensile structural steel.
Outriggers:	4 hydraulic swing-out beams with support pad jacks.
Engine:	Diesel, 12 cylinder, watercooled, make Daimler-Benz, type OM 444 A, output 390 kW DIN (530 HP) at 2100 min ⁻¹ , max. torque 1813 lbs-ft at 1300 min ⁻¹ . Fuel tank capacity: 132 gallons.
Transmission:	Allison type CLBT 755 automatic transmission with torque converter and hydrodynamic retarder brake. 5 forward speeds, 1 reverse. Splitter gearbox with differential and differential lock, off-road range.
Axles:	Heavy duty crane truck axles, all 8 axles sprung. Axles 1 to 4 and 7 and 8 steered. Axles 1, 2, 5 and 6 have planetary reduction gears with differential locks.
Suspension:	All axles are hydropneumatically sprung with automatic levelling. Load equalization between all axle pairs. Suspension can be hydraulically locked.
Tyres:	24 tyres. Axles 1, 2, 5 and 6 with single tyres, axles 3, 4, 7 and 8 with twin tyres. Tyre size: 14.00 R 25.
Steering:	ZF semi-unitary hydraulic power steering with 2 pump circuits. Main pump circuit driven from engine, auxiliary pump circuit from final drive.
Brakes:	Service brake: servo assisted air brakes acting on all wheels, dual circuit system. Hand brake: spring-action, acting on all wheels of axles 2 to 7.
Driver's cab:	Large-area, all-steel cab with resilient mountings, safety glass windows and full range of instruments.
Electrical system:	24 Volts DC, 2 batteries, lighting to German road vehicle regulations.

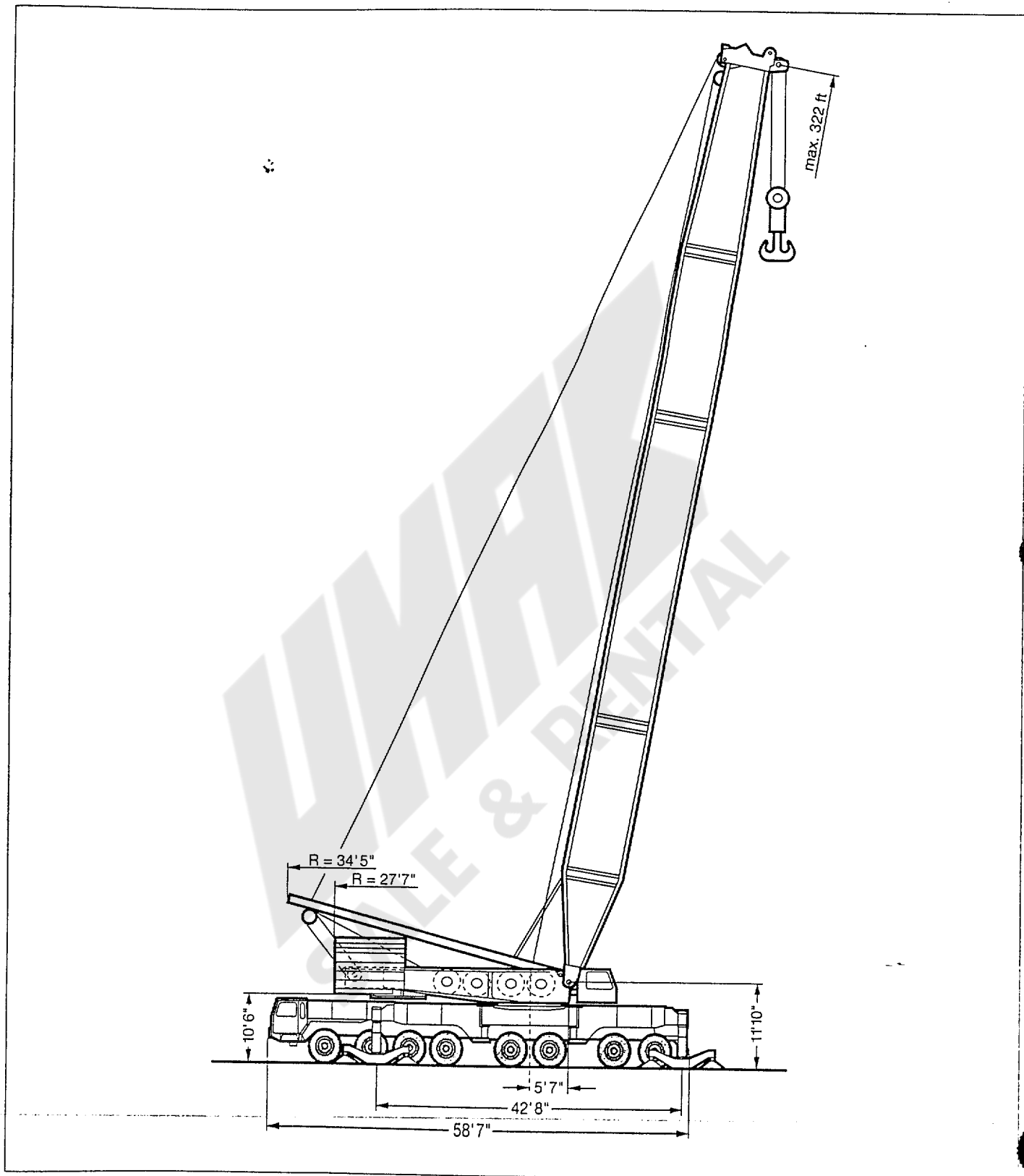
Crane superstructure.

Frame:	Self-manufactured, torsion resistant, welded construction of high-tensile steel. Connected to chassis by a 3-row roller slewing ring, 360° slewing range.
Engine:	10 cylinder Daimler-Benz Diesel, type OM 423 A-turbo, water cooled, output acc. to DIN 70020 - 300 kW (408 HP) at 2100 min ⁻¹ , max. torque 1216 lbs-ft at 2100 min ⁻¹ . Fuel tank capacity: 177 gallons.
Crane drive:	Hydraulically by pump transfer case and 5 axial piston variable displacement pumps with capacity control; closed hydraulic circuits.
Crane control:	Servo control with electronic synchronizing device on hoisting winches. Energy recycling during lowering of load. All motions controlled independently by joystick selectors.
Winches:	4 winches, hydraulically controlled by axial piston variable displacement pumps and planetary gears. Spring-loaded multi-disc brakes with hydraulic release.
Slewing gears:	Hydraulically controlled by axial piston pump and planetary gear, spring-loaded multi-disc brake with hydraulic release. Infinitely variable slewing speed 0 - 1,2 min ⁻¹ .
Counterweight:	441000 lbs, consisting of: 1 base slab of 35300 lbs, 12 slabs of 22000 lbs each and 4 slabs of 13200 lbs each and 4 slabs of 22000 lbs.
Operator's cab:	Sheet steel design with safety glazing, movable sideward and inclinable to the rear; including operating equipment and check instruments.
Safety devices:	Electronic load-moment limiter, hoist limit switch, safety valves to protect hydraulic system against pipe and hose fracture.
Electrical system:	24 V DC - 2 batteries, 143 Ah each.

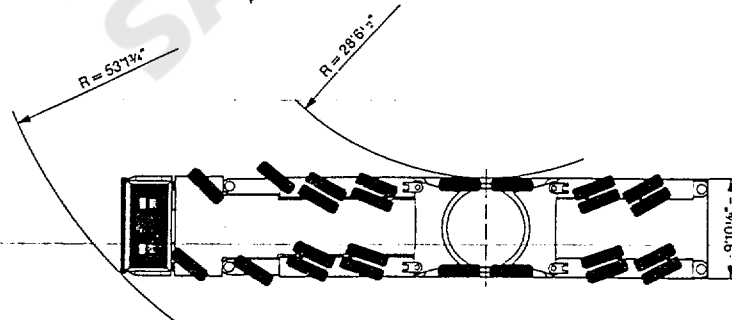
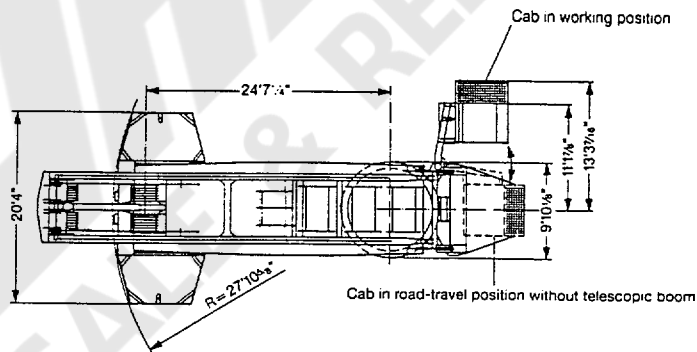
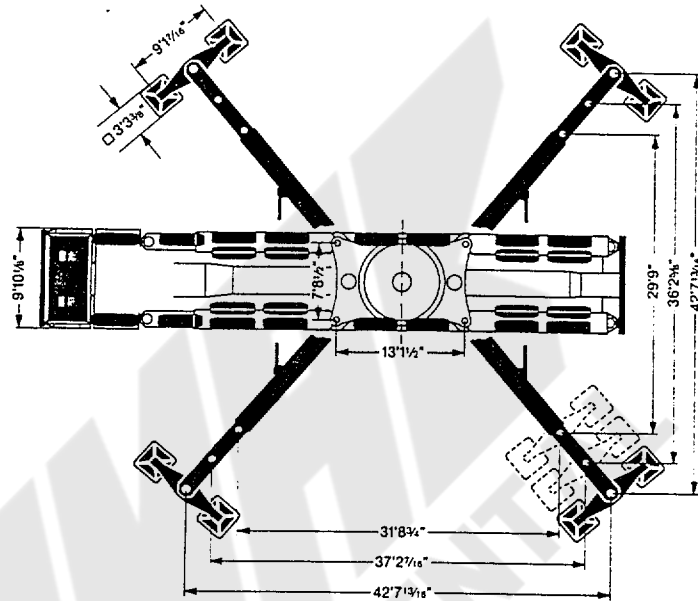
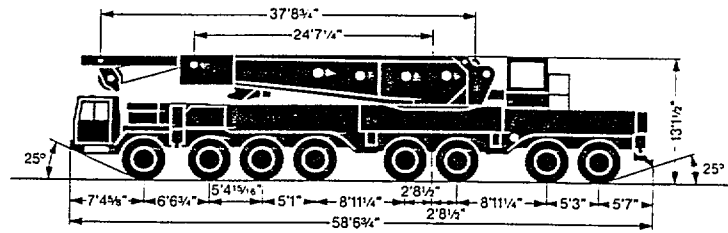
Boom configurations.

Heavy-weight design: SL - SLN

Dimensions.



Dimensions.



Weights.







Axle	1	2	3	4	5	6	7	8	Total weight
lbs	26455	26455	26455	26455	26455	26455	26455	26455	211641






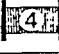

Load (kips)	No. of sheaves	No. of lines	Weight lbs
772	15	31	11023
518	9	19	8818
205	3	7	4409
90	1	3	2646
32	-	1	1322

Working speeds.



	1	2	3	4	5	R	
mph	9.1	12.8	20.3	30.2	42	9	18 %
mph 	4.7	7	11.2	16.4	23.2	5	34 %
	14.00 R 25						

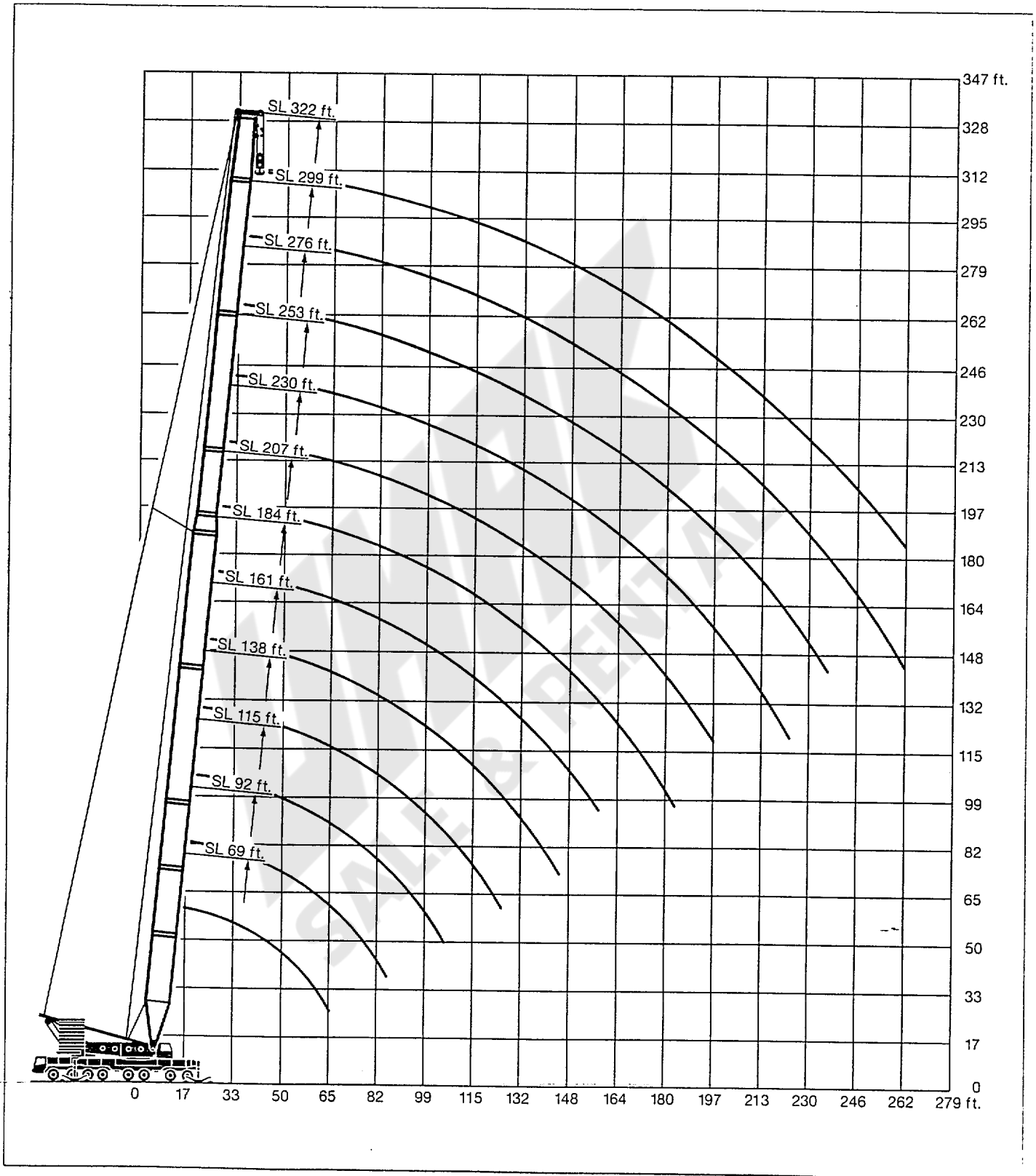


Drive	infinitely variable	Rope diameter / Rope length	Max. single line pull
	0 - 425 ft/min single line	1 1/8" / 1970'	31460 lbs
	0 - 475 ft/min single line	1" / 3500'	31460 lbs
	0 - 475 ft/min single line	1 1/8" / 2950'	31460 lbs
	2 x 165 ft/min single line	1 1/8" / 820'	40451 lbs
	0 - 1,2 min ⁻¹		

¹⁾ Luffing jib gear

²⁾ Luffing gear

Lifting heights at SL boom.



Lifting capacities at SL boom.



69 ft - 322 ft



360°



441000 lbs

85%

ft	69 ft	92 ft	115 ft	138 ft	161 ft	184 ft	207 ft	230 ft	253 ft	276 ft	299 ft	322 ft	ft
14	1400												14
15	1316												15
16	1242												16
17	1181												17
18	1129												18
19	1078	942											19
20	1029	915	893										20
21	988	892	878										21
22	938	870	863										22
23	884	848	848										23
24	865	835	830	805									24
26	825	807	793	776									26
28	787	772	757	741	706								28
30	751	736	722	707	682	606	518						30
32	719	704	691	676	664	604	505						32
34	683	669	656	642	637	585	491	425	362				34
36	644	632	619	605	604	554	476	411	352				36
38	612	599	588	574	573	540	463	397	343				38
40	581	569	558	545	544	525	450	385	334	305	279	255	40
45	516	506	496	484	482	474	418	359	312	285	265	240	45
50	464	454	445	434	432	427	388	335	293	269	248	226	50
55	420	411	402	392	390	385	361	312	274	255	234	213	55
60	382	374	366	356	354	349	335	292	256	240	221	202	60
65	346	343	335	326	323	319	311	274	240	229	210	193	65
70		317	309	300	298	294	288	257	226	218	200	183	70
75		294	286	278	275	272	267	240	213	208	191	174	75
80		272	266	257	255	252	247	225	201	199	182	165	80
85		252	248	240	237	234	230	212	190	187	173	158	85
90			233	224	222	219	215	197	179	176	165	149	90
95			218	210	208	205	201	183	169	166	153	142	95
100			204	197	195	192	188	171	160	157	150	136	100
105				186	183	180	176	160	150	148	143	129	105
110				176	173	170	166	151	143	141	138	121	110
115				166	163	160	157	143	137	134	132	115	115
120				156	154	152	148	135	131	128	126	109	120
125					146	144	140	128	123	121	121	104	125
130					139	136	133	123	118	117	115	100	130
135					131	130	126	117	112	112	108	96	135
140					123	123	120	112	107	106	102	91.5	140
150						112	108	101	96.5	94.5	90	82.5	150
160							98	91.5	87.5	84.5	79.5	74	160
170							89	82.5	79	75.5	70.5	64.5	170
180							78.5	74.5	71.5	67.5	62.5	56.6	180
190								67.5	64	60.5	55.2	49.3	190
200									57.8	54	48.5	42.6	200
210									52	48.2	42.5	36.5	210
220									45.3	42.9	37.1	30.9	220
230										38.1	32.2	25.4	230
240											27.5	20.4	240
250											23	15.6	250
260											18.2	8.9	260
ft/s*	29												ft/s*

Lifting capacities above 849 kips only with special equipment over rear (special boom head and another support base).

TAB 49191

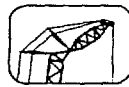
* Permissible wind speed

Lifting capacities are given in kips (1,000 lbs).

Lifting capacities at SLN boom/jib combination.



87°
92 ft - 161 ft



69 ft - 299 ft



360°



299800 lbs



85%

ft	92 ft										115 ft										ft			
	69 ft	92 ft	115 ft	138 ft	161 ft	184 ft	207 ft	230 ft	253 ft	276 ft	299 ft	69 ft	92 ft	115 ft	138 ft	161 ft	184 ft	207 ft	230 ft	253 ft		276 ft	299 ft	
40	315																						40	
45	315																							45
50	315	304										314	289											50
55	315	297	280	235								310	282	264	224									55
60	313	289	268	231	196							302	275	254	220	188								60
65	301	282	260	227	192							294	268	247	215	185								65
70	274	272	254	222	188	158						277	262	240	211	181	154							70
75	230	254	244	218	184	155	133					241	252	234	206	177	151	129						75
80		233	231	213	180	152	131	107				238	226	202	174	148	127	104						80
85		215	213	209	177	149	129	105				219	217	198	170	145	125	103						85
90		199	198	196	173	146	126	103	82.5			202	202	193	167	143	122	101	81.5					90
95		176	184	182	169	143	124	101	81	69.5		183	188	185	163	140	120	99.5	80	68.5				95
100			172	170	165	140	121	99.5	79.5	68.5	59.3		175	174	159	137	118	97.5	79	67.5	57.4			100
105			161	160	161	138	119	97.5	78	67	58.3		164	163	156	134	115	96	77.5	66.5	56.4			105
110			152	150	152	135	117	96	76.5	66	57.2		154	153	151	131	113	94.5	76.5	65.5	55.4			110
115			139	142	143	132	115	94.5	75	64.5	56.2		144	144	144	128	111	93	75	64	54.3			115
120			123	134	135	129	113	93	73.5	63.5	55.1		131	136	136	126	109	91.5	74	63	53.4			120
125				127	128	125	111	91	72	62	54		129	129	128	123	107	90	72.5	62	52.5			125
130				118	121	119	108	89.5	71	61	53		122	122	120	105	88.5	71.5	61	51.4				130
135				107	115	113	106	88	69.5	59.8	51.9		112	116	116	103	87	70.5	59.9	50.4				135
140				94.5	110	108	104	86.5	68	58.8	50.9		100	110	110	101	85	69	58.8	49.5				140
150					98	97.5	83	66	56.7	49.1				98.5	101	97	82	67	56.9	47.7				150
160						89.5	89	80.5	64	54.6	47.4					91.5	92	79.5	65.5	55	46			160
170						82	81.5	77.5	62.5	52.5	45.9					84	84	76.5	63.5	53.1	44.4			170
180						68	75.5	72.5	60.5	51.3	44.3					71.5	77.5	74	62	51.6	42.8			180
190						68	68	67.5	59.1	50.1	43					71	69.5	60.5	50.2	41.5				190
200							58.9	62.5	57.7	48.9	42					63.5	64.5	58.8	48.9	40.4				200
210								57.9	56.3	47.6	41						59.5	57.3	47.5	39.4				210
220								49.3	53.1	46.5	40						52.6	55.1	46.3	38.3				220
230								48.8	45.4	39								51.8	45.2	37.3				230
240									43.3	44.4	38								46.4	44.1	36.4			240
250										42.8	37.2									42.9	35.6			250
260											37.1	36.3									38.9	34.9		260
270												31.1	34.8									33.3	34.1	270
280																							31.8	280

TAB 49193.1

ft	138 ft										161 ft										ft				
	69 ft	92 ft	115 ft	138 ft	161 ft	184 ft	207 ft	230 ft	253 ft	276 ft	299 ft	69 ft	92 ft	115 ft	138 ft	161 ft	184 ft	207 ft	230 ft	253 ft		276 ft	299 ft		
50	298	274																						50	
55	292	268	249																						55
60	286	262	241	209																					60
65	280	256	234	204																					65
70	271	249	227	200	174																				70
75	247	243	220	195	171	148																			75
80		236	213	191	167	145	123	102																	80
85		223	207	187	164	142	121	101																	85
90		206	202	183	160	139	119	99	80.5																90
95		189	192	179	157	137	116	97.5	79.5	68															95
100			167	179	173	154	134	114	96	78.5	67	55.5													100
105				167	164	150	131	112	94.5	77	66	54.6													105
110				157	154	147	128	109	93	76	65	53.6													110
115				148	145	142	125	107	91.5	75	64	52.7													115
120				136	137	137	122	105	90	74	63	51.8													120
125					130	129	120	103	88.5	73	62	50.9													125
130					123	123	117	101	87	72.5	61	49.9													130
135					113	117	114	99	85.5	71.5	59.9	49.1													135
140					103	111	110	97	84	70.5	59	48.2													140
150						100	101	93.5	81.5	68.5	57.2	46.5													150
160							92	89.5	78.5	67	55.5	44.8													160
170							84.5	84.5	76	65	53.8	43.1													170
180							74	78	73.5	63.5	52.1	41.4													180
190								71.5	69.5	62	50.5	40.1													190
200								64.5	64.5	60	49.1	39													200
210									59.7	58.4	47.7	38													210
220									54.3	55.5	46.3	36.9													220
230									51.9	45	35.8														230
240										47.1	43.9	34.9													240
250											42.6	34.2													250
260												40	33.5												260
270													34.9	32.8											270
280																									280

TAB 49193.2



187°
184 ft - 253 ft



69 ft - 299 ft



360°



299800 ft

85%

ft	184 ft										207 ft										ft				
	69 ft	92 ft	115 ft	138 ft	161 ft	184 ft	207 ft	230 ft	253 ft	276 ft	299 ft	92 ft	115 ft	138 ft	161 ft	184 ft	207 ft	230 ft	253 ft	276 ft		299 ft			
50	272																					50			
55	269	243	215									220										55			
60	266	239	209	182								216	192	169								60			
65	264	235	202	178								212	186	165								65			
70	261	231	196	173	148							208	182	161	139							70			
75	252	227	191	169	146	125						204	177	157	136	117						75			
80	226	223	186	165	143	122	104					200	173	153	133	115	97.5					80			
85	168	219	182	161	140	120	102					196	166	149	130	112	95.5					85			
90		207	178	158	137	118	99.5	84	68			192	165	148	127	110	93.5	79				90			
95		195	174	155	135	116	97.5	82.5	66.5	58		188	162	143	125	108	92	77.5	63	54.7		95			
100		179	171	151	132	114	96	81	65	56.6	48.2	180	158	140	122	106	90	76	62	53.7		100			
105			169	149	130	112	94.5	79.5	64	55.5	47		155	138	120	104	89	75	61	52.8	44.6	105			
110				161	146	127	110	93	78.5	63	54.4	45.9	153	135	117	102	87	73.5	59.8	51.8	43.8	110			
115				152	144	125	108	91.5	77	62	53.4	45	150	132	115	100	86	72.5	58.9	51	43	115			
120					143	140	123	107	90	76	61.5	52.6	145	130	113	98.5	84.5	71	58	50.2	42.3	120			
125						133	120	105	89	75	60.5	51.9		128	111	97	83	70	57.1	49.4	41.5	125			
130							126	118	103	87.5	74	59.8		126	109	95.5	82	69	56.2	48.7	40.9	130			
135							117	115	102	86.5	73	58.9		120	107	93.5	80.5	68	55.5	48	40.3	135			
140							108	112	100	85.5	72	58.1			112	105	92	79.5	67	54.7	47.3	140			
150								104	97	83.5	70	56.7			101	89	77	65	53.3	46	38.4	150			
160								92	92.5	81.5	68	55.5				94.5	86	74.5	63.5	51.9	44.7	160			
170								75.5	85	79	66.5	54.5				80	83	72.5	61.5	50.7	43.4	170			
180									77	65	53.4	44.8					79	70.5	60	49.4	42.3	180			
190									72	63.5	52.4	43.9						68	58.4	48.1	41.2	190			
200									66	62	51.3	43						64.5	56.8	47	40.2	200			
210										60	50.2	42.2							55.3	46	39.2	210			
220											55.6	49.2							53.7	44.9	38.2	220			
230											50.3	48.1							49.9	43.7	37.3	230			
240												46.5								42.7	36.4	240			
250																					35.3	29.2	250		
260																						34.3	28.3	260	
270																						33.5	27.5	270	
280																								28.7	280
290																								25.9	290
300																								25.1	300

TAB 49193.3

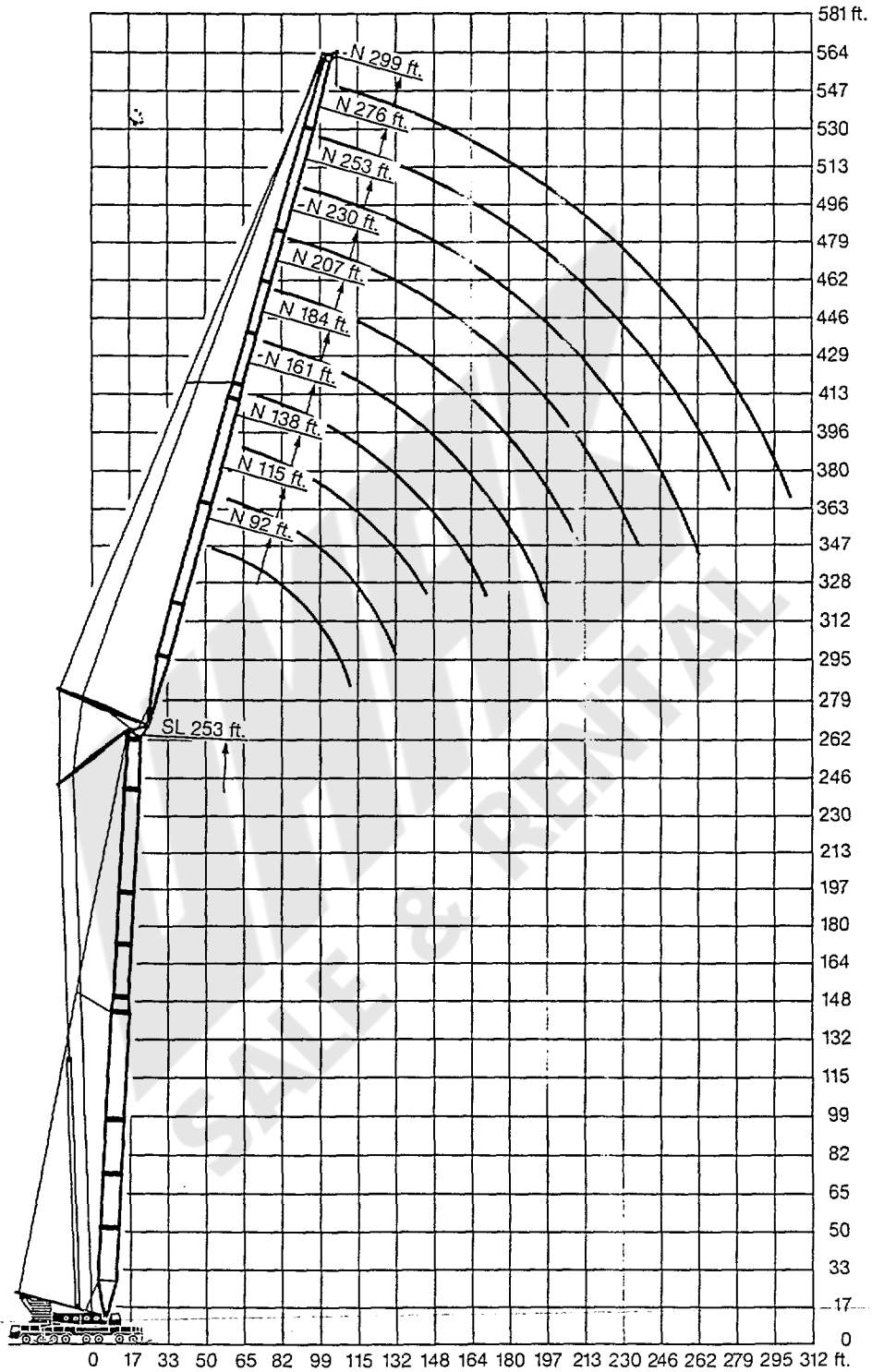
ft	230 ft ²										253 ft ²										ft							
	92 ft	115 ft	138 ft	161 ft	184 ft	207 ft	230 ft	253 ft	276 ft	299 ft	92 ft	115 ft	138 ft	161 ft	184 ft	207 ft	230 ft	253 ft	276 ft	299 ft								
55	198																					55						
60	194	175											182									60						
65	190	171											176	157								65						
70	188	167	148										172	151								70						
75	182	163	145	126	110								168	147	131							75						
80	178	159	141	123	107	91							165	144	128	114	98					80						
85	174	156	137	120	105	89.5							162	140	125	111	95.5	83				85						
90	170	152	135	117	103	88	74.5						159	137	122	108	93.5	81				90						
95	166	149	132	115	100	86	73	59.5					156	135	120	106	91.5	79.5	66.5			95						
100	162	145	129	112	98.5	84.5	72	58.6	50.7				154	132	118	104	90	78	65	53.6		100						
105		142	126	110	96.5	83	70.5	57.7	50	42.2			152	130	116	101	88	76.5	64	52.6	44.9	105						
110			139	123	107	94.5	81.5	69	56.7	49.2	41.6		148	126	112	97.5	85	73.5	61.5	50.7	43.2	36.8	110					
115				136	121	105	92.5	80	68	55.7	48.5	41.1		124	110	95.5	83.5	72.5	60.5	49.9	42.4	36.2	115					
120				133	118	103	91	79	66.5	54.8	47.7	40.5		123	108	94	82	71	59.7	49.2	41.7	35.7	120					
125				130	116	101	89	77.5	65.5	53.8	47	40		121	106	92	80.5	70	58.6	48.5	41	35.1	125					
130				127	113	99	87.5	76	64	52.9	46.3	39.4		119	104	90.5	79	69	57.7	47.7	40.4	34.6	130					
135					111	97	85.5	75	63	52.1	45.6	38.9			102	89	78	68	56.9	47	39.8	34	135					
140						108	95	84	73.5	62	51.4	45	38.3			101	87.5	76.5	67	56	46.2	39.1	33.5	140				
150							91.5	81	71	60.5	49.9	43.7	37.2				84.5	74	65	54.5	45	38	32.4	150				
160								87	78	68.5	58.5	48.5	42.5	36.2			81.5	71.5	63	53	43.9	37	31.5	160				
170								82	75	66	56.6	47	41.2	35.2				78.5	69.5	61	51.5	42.8	36	30.5	170			
180									71	63.5	54.9	45.6	40	34.1					67	59.5	50	41.6	34.9	29.6	180			
190										61.5	53.3	44.2	38.7	33.1					65	57.8	48.5	40.5	33.9	28.6	190			
200										59	51.6	42.8	37.5	32.1						56	47.1	39.5	33	27.6	200			
210											50	41.7	36.4	31							45.9	38.5	32.1	26.7	210			
220												48.3	40.6	35.4	30						44.7	37.6	31.3	25.9	220			
230												46.6	39.5	34.4	28.9						43.5	36.6	30.5	25.1	230			
240													38.4	33.3	27.9							35.6	29.6	24.3	240			
250														32.3	26.8							34.7	28.8	23.5	250			
260															31.2	25.8						33.7	28	22.7	260			
270																30.2	24.7							27.2	21.9	270		
280																	23.6								21.1	280		
290																		22.6								20.3	290	
300																			21.5								19.6	300

TAB 49193.4



with 352700 lbs
with 441000 lbs

Lifting heights at SLN boom/jib combination.

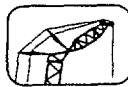


SL boom: 87°

Lifting capacities at SLN boom/jib combination.



67°
92 ft - 161 ft



69 ft - 299 ft



360°



441000 lbs

85%

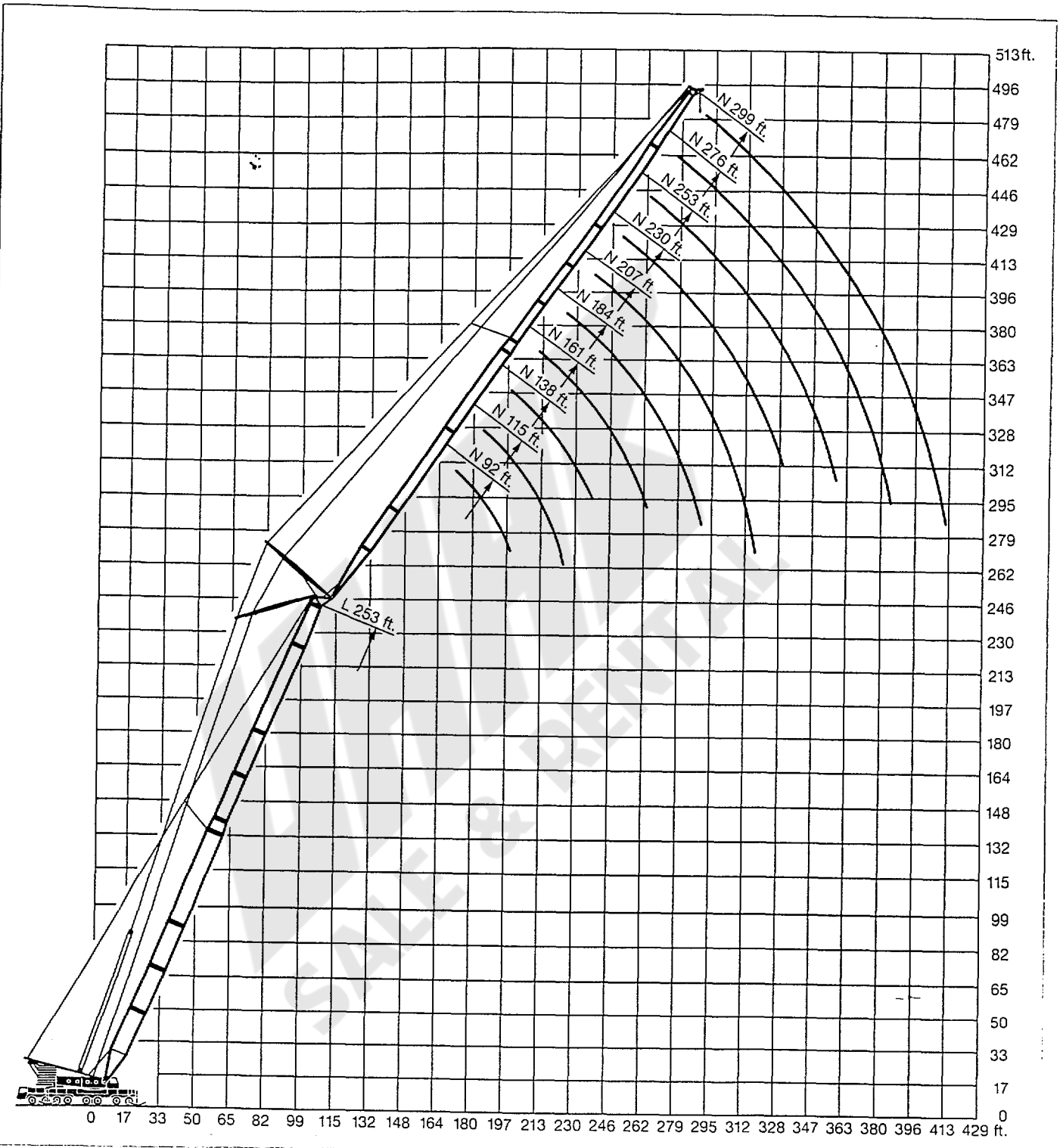
ft	92 ft										115 ft										ft				
	69 ft	92 ft	115 ft	138 ft	161 ft	184 ft	207 ft	230 ft	253 ft	276 ft	299 ft	69 ft	92 ft	115 ft	138 ft	161 ft	184 ft	207 ft	230 ft	253 ft		276 ft	299 ft		
95	197																						95		
100	187											181											100		
105	177	175										171											105		
110	168	167										163											110		
115		159										155	154										115		
120		152	151									148	147										120		
125		145	144	142								140	139										125		
130		139	138	136								135	133										130		
135			133	131								129	128										135		
140			127	126								124	123										140		
150			118	117	115								114	112									150		
160			108	107	104								106	104	103								160		
170			101	100	97.5								99	97.5	96								170		
180			85	92	89.5	86								91.5	90	89							180		
190				85	82	80.5	71.5								84.5	83.5	82.5	69.5					190		
200					76	74.5	69.5	58.2							80	79	77.5	68	54.9				200		
210						70.5	69	66	57.4	48.1						74.5	73	66.5	54	45			210		
220							65.5	64	61.5	56.7	47.2					70	69	65.5	53.2	44.3			220		
230								59.6	57.1	54.9	46.4	38.3					65.5	64.5	62	52.5	43.6	35.8	230		
240									55.6	53.3	52.2	45.5	37.5					60	57.8	51.7	43	35.2	240		
250										49.8	48.7	44.7	36.7					56	53.9	51	42.3	34.6	250		
260											46.6	45.6	43.9	36					50.9	50.4	48.6	41.8	34.1	260	
270											40.9	42.7	41.9	35.2						47.1	46.8	40.9	33.5	270	
280												40	39.5	34.5							43.8	40.1	33	280	
290													36.9	33.6								40.9	39	32.4	290
300														34.6	32.6							38.3	36.5	31.9	300
310															32.4	30.7							34.2	31.3	310
320																28.7							32	30.2	320
330																	28.8							28.3	330
340																		24.9						26.5	340

TAB 49105.1

ft	138 ft										161 ft										ft			
	69 ft	92 ft	115 ft	138 ft	161 ft	184 ft	207 ft	230 ft	253 ft	276 ft	299 ft	69 ft	92 ft	115 ft	138 ft	161 ft	184 ft	207 ft	230 ft	253 ft		276 ft	299 ft	
105	165																							105
110	157																							110
115	150																							115
120	143	141																						120
125	137	135																						125
130	131	129																						130
135		124																						135
140		120	118																					140
150		111	109	108																				150
160			101	100	99																			160
170			94.5	93.5	92.5																			170
180				88	86.5	85																		180
190					82.5	81	79.5	77																190
200						76.5	74.5	72	66															200
210							72	70.5	67.5	65	50.7													210
220								68	66.5	63.5	61.5	50												220
230									63	60	58.4	49.3	40.9											230
240										56.9	55.1	48.5	40.4	32.9										240
250											53.9	52.1	47.8	39.9	32.8									250
260												51.3	49.4	46.5	39.5	32.3								260
270													46.8	44.3	39	31.9								270
280														44.6	42	38.5	31.6							280
290																39.8	37.8	31.3						290
300																	37.9	36.2	30.9					300
310																			36.2	34.4	30.6			310
320																					32.7	29.9		320
330																							28.8	330
340																							27.7	340
350																							26.3	350
360																							25.9	360

TAB 49105.2

Lifting heights at SLN boom/jib combination.



SL boom: 67°



67°
184 ft - 253 ft



69 ft - 299 ft



360°



441000 ft

85%

ft	184 ft										207 ft										ft		
	69 ft	92 ft	115 ft	138 ft	161 ft	184 ft	207 ft	230 ft	253 ft	276 ft	299 ft	92 ft	115 ft	138 ft	161 ft	184 ft	207 ft	230 ft	253 ft	276 ft		299 ft	
125	128																					125	
130	123																						130
135	118																						135
140	113																						140
150		103																					150
160		95.5	93.5								90												160
170		89.5	87								84												170
180			81.5	79.5							79			73.5									180
190			77	74.5	72.5						72		69	67									190
200				70	68	65.5							64.5	62.5	61								200
210					64	61.5	59.4						60.5	58.6	57.1	54							210
220					60	57.8	55.8						57.5	55.3	53.7	50.7							220
230					57	54.5	52.5	49.9							52.2	50.5	47.7	43.5					230
240						51.5	49.5	46.9	42.5						49.4	47.7	44.8	41.7	35.9				240
250						48.8	46.7	44.1	41.6	34.4					45	42.2	39.4	34.6	28.9				250
260						46.5	44.2	41.6	39.7	33.8					42.7	39.8	37	33.4	28				260
270							42	39.3	37.6	33.2	26.4						37.6	34.8	32.2	27.2	21.9		270
280							40	37.2	35.4	32.3	26						35.7	32.8	30.8	26.3	21.2		280
290								35.2	33.4	31	25.6							31	29.1	25.4	20.5		290
300								33.5	31.6	29.1	25.2							29.3	27.3	24.5	20		300
310									29.9	27.3	24.5							27.8	25.7	23	19.3		310
320									28.3	25.7	23.2								24.2	21.4	18.7		320
330										24.2	21.6								22.8	19.9	18		330
340										22.8	20.2								21.7	18.5	16.8		340
350										21.7	18.8									17.3	15.8		350
360											17.6										14.9		360
370											16.6										14.1		370
380											15.9										13.5		380

TAB 49105.3

ft	230 ft ¹⁾										253 ft ²⁾										ft		
	92 ft	115 ft	138 ft	161 ft	184 ft	207 ft	230 ft	253 ft	276 ft	299 ft	92 ft	115 ft	138 ft	161 ft	184 ft	207 ft	230 ft	253 ft	276 ft	299 ft			
160	82																						160
170	78																						170
180	71.5	69									65.5												180
190		65	62.5								61.5	59.4											190
200		61	58.5	55.5								55.6	52.4										200
210			54.9	51.9	49.8							52.3	49	47									210
220			51.8	48.8	47							49.5	48.1	44									220
230			49	45.9	44.3	40.9							43.5	41.3	38.7								230
240				43.3	41.6	38.6	33.7							38.8	36.2	34.2							240
250					39.2	36.2	32	27.7						36.6	33.9	31.8	28.7						250
260					36.7	34	30.3	26.1						34.8	31.9	29.7	26.5						260
270					34.1	31.9	28.6	24.5	21.2					30	27.8	24.6	21.1						270
280						29.8	26.8	22.9	20	16.6					28.3	26	22.7	19.1	17				280
290						27.6	25.1	21.3	18.9	15.7						24.3	20.9	17.2	15.6	11.8			290
300						25.3	23.4	19.8	17.7	14.8						22.8	19.3	15.8	14.5	11.2			300
310							21.7	18.2	16.5	14						21.6	17.8	14.8	13.6	10.7			310
320							19.9	16.8	15.3	13.1							16.6	13.9	12.7	10.1			320
330								15.7	14.2	12.2								13.1	11.9	9.5			330
340								14.5	13.1	11.3								12.5	11.1	8.9			340
350									11.9	10.5								11.9	10.5	8.3			350
360									10.8	9.6									9.9	7.7			360
370										8.7									9.3	7.1			370
380										7.8									8.9	6.5			380
390										6.9									6				390
400																				5.4			400

TAB 49105.4