

Technical Data Hydraulic Crawler Crane

HS 855 SX

Litronic®
Complies with ANSI B 30.5

Basic machine with undercarriage

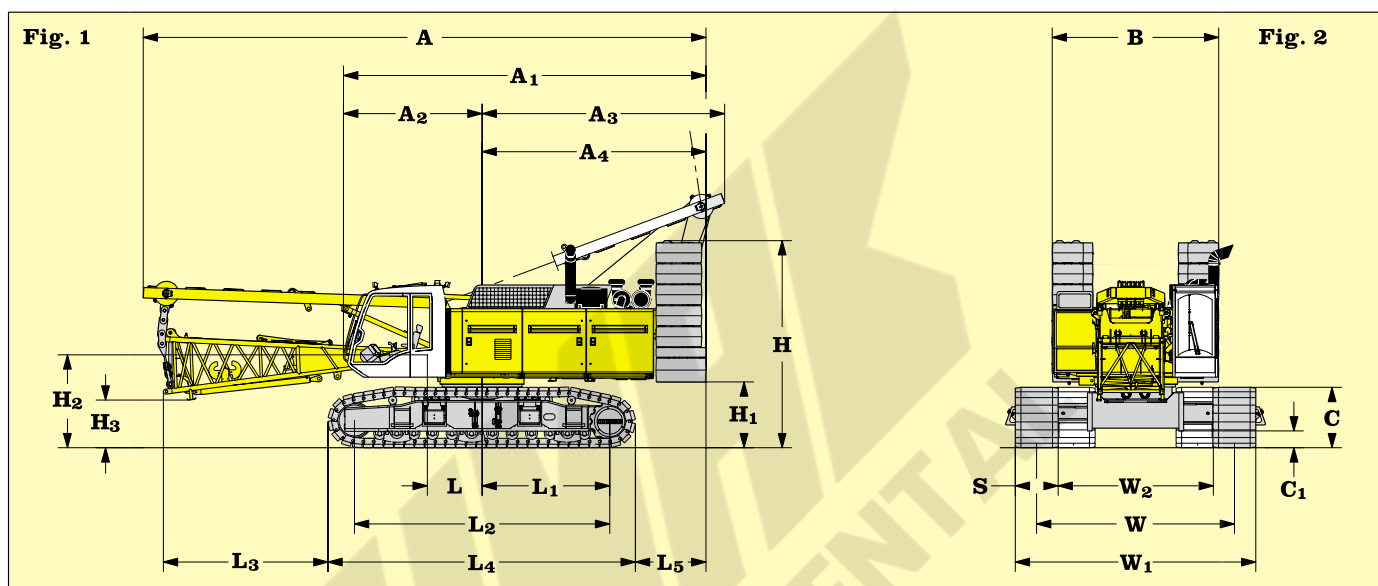


Fig. 1: Dimensions in

ft

A Overall length of superstructure with lowered A-frame and boom foot	38' 9"
A₁ Length of superstructure	15' 5"
A₂ Centre of rotation - front edge of cabin	9' 6"
A₃ Tail reach- A-frame in working position 86°	24' 11"
A₄ Tail swing radius	16' 9"

H Height over counterweight	14' 3"
H₁ Ground clearance of superstructure	4' 6"
H₂ Ground clearance of boom foot pivot	6' 5"
H₃ Ground clearance of horizontal boom foot	3' 3"

L Centre of rotation - boom foot pivot	45"
L₁ Centre of rotation - centre of tumbler	8' 10"
L₂ Wheel base (centre idler to centre tumbler)	17' 7"
L₃ Distance from edge of horizontal boom foot to crawler	11' 4"
L₄ Length of crawlers	21'
L₅ Distance between rear end of crawler and outside of counterweight	59"

Fig. 2: Dimensions in

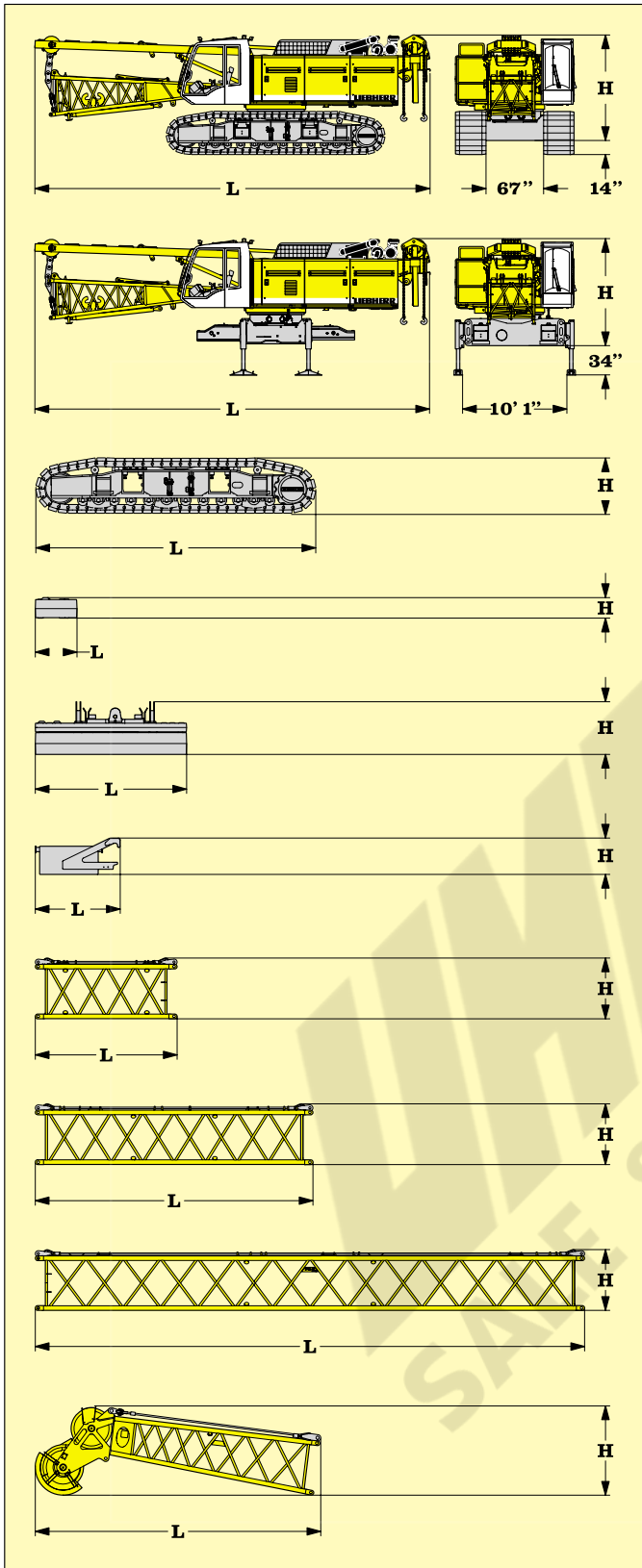
ft

B Width of superstructure	11' 6"
C Height of crawlers	50"
C₁ Ground clearance of undercarriage	14"
S Width of pads	35"
W Track width of undercarriage	13' 7"
W₁ Width of undercarriage	16' 7"
W₂ Track width for transport	11' 6"

Operating weight and ground pressure

The operating weight includes the basic machine with crawlers, 35 inch flat pads, 2 main winches 44.100 lbs and 46 ft main boom (No. 1311.xx) consisting of A-frame, boom foot (18 ft), boom head (28 ft), 71.200 lbs counterweight, 33.100 lbs carbody counterweight.

Total weight	239.700 lbs
Ground bearing pressure	18.0 psi



*) Including pendants

Basic machine

with HD undercarriage, boom foot (1311.xx), A-frame and 2x 44.100 lbs winches including wire ropes (492 ft), without basic counterweight

L Length	38' 5"
H Height	10' 5"
Width	11' 6"
Weight in lbs	129.700

Basic machine

with boom foot (1311.xx), A-frame and 2x 44.100 lbs winches including wire ropes (492 ft), without basic counterweight and crawlers

L Length	38' 5"
H Height	10' 5"
Width	11' 6"
Weight in lbs	84.500

Crawler

2x

L Length	21'
H Height	4' 2"
Width	35"
Weight in lbs	22.500

Counterweight

10x

L Length	38"
H Height	19"
Width	34"
Weight in lbs	3.300

Counterweight

1x

L Length	11' 6"
H Height	48"
Width	41"
Weight in lbs	38.200

Carbody counterweight

2x

L Length	6' 5"
H Height	33"
Width	5' 5"
Weight in lbs	16.550

Tubular

boom section (No. 1311.xx)

10 ft

L Length	10' 4"
H Height	4' 1"
Width	4' 7"
Weight* in lbs	1.100

Tubular

boom section (No. 1311.xx)

20 ft

L Length	20' 2"
H Height	4' 1"
Width	4' 7"
Weight* in lbs	1.760

Tubular

boom section (No. 1311.xx)

40 ft

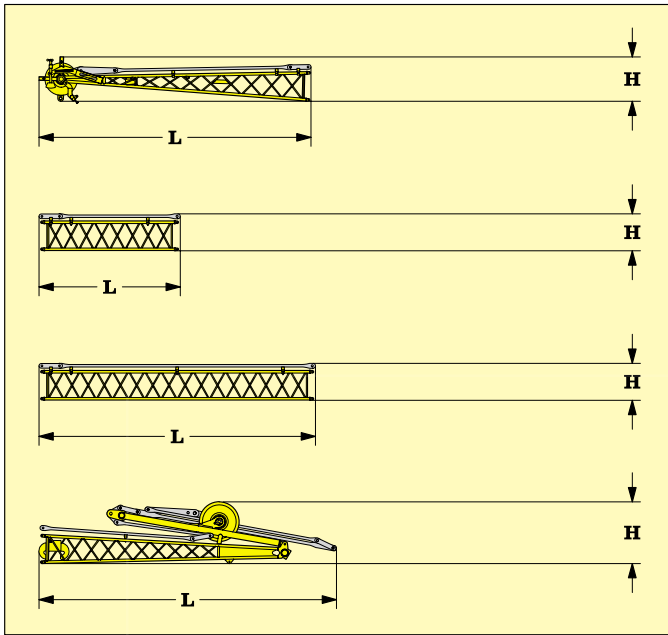
L Length	39' 10"
H Height	4' 1"
Width	4' 7"
Weight* in lbs	2.800

Boom head (No. 1311.xx)

18 ft

L Length	20' 8"
H Height	6' 6"
Width	53"
Weight in lbs*	4.350

Transport dimensions and weights



*) Including pendants

Fixed jib head (No. 0806.xx)

L Length	19' 10"
H Height	39"
Width	45"
Weight* in lbs	985

Tubular fixed jib section (No. 0806.xx) 10 ft

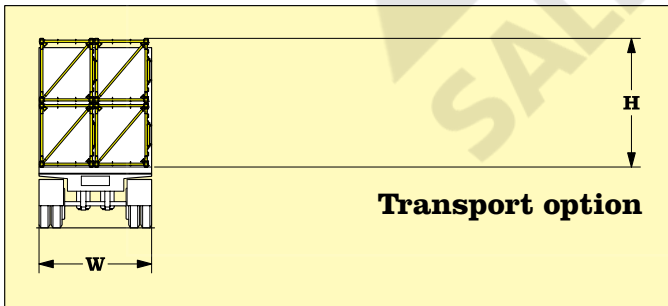
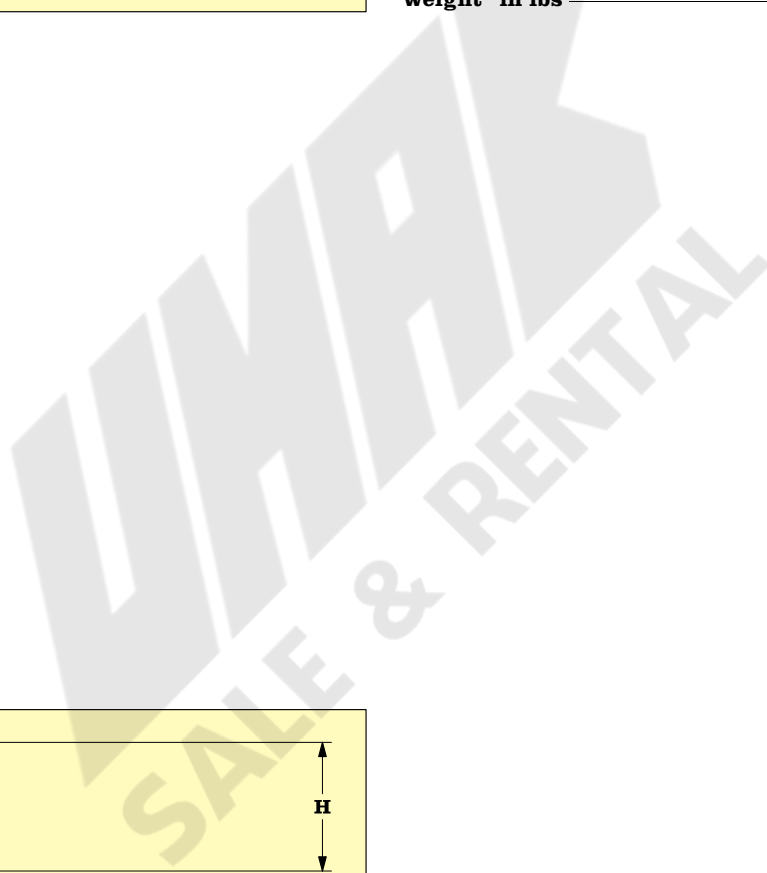
L Length	10' 4"
H Height	32"
Width	38"
Weight* in lbs	245

Tubular fixed jib section (No. 0806.xx) 20 ft

L Length	20' 2"
H Height	32"
Width	38"
Weight* in lbs	430

Fixed jib foot with A-frames (No. 0806.xx)

L Length	22' 1"
H Height	55"
Width	40"
Weight* in lbs	2,580



Transport option

Boom transport option (No. 1311.xx)

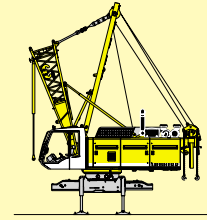
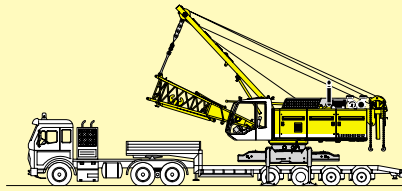
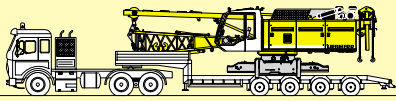
L Length	39' 10"
H Height	9' 4"
W Width	8' 2"
Weight in lbs	11,200

Transport dimensions and weights

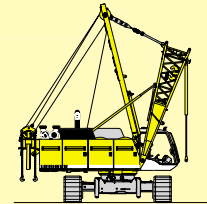
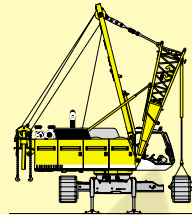
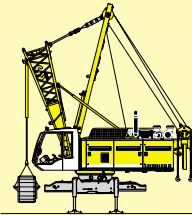
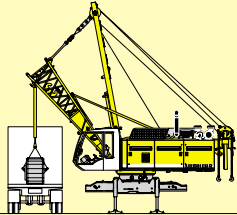


This information is for reference use only and must not be used for a specific serial numbered crane. Please contact Essex Crane Rental Corp. at 847-215-6500 for further information.

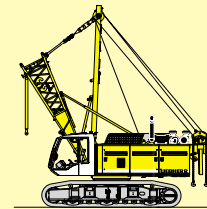
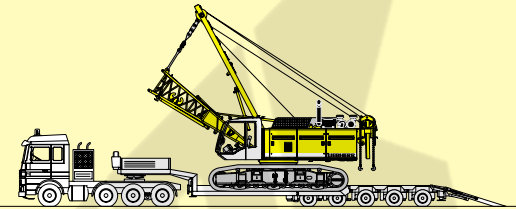
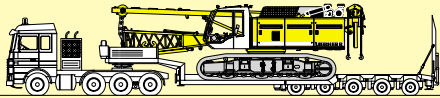




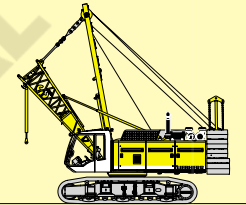
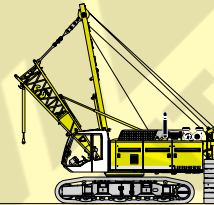
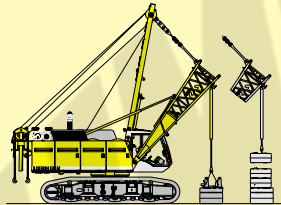
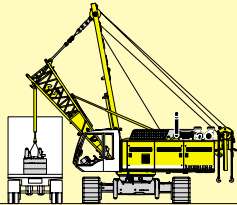
Unloading of basic machine (Optional)



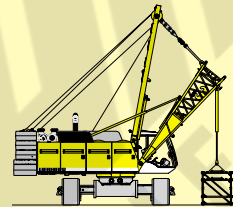
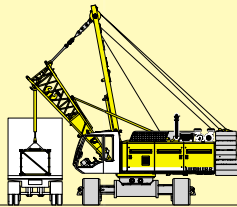
Unloading and assembly of crawlers



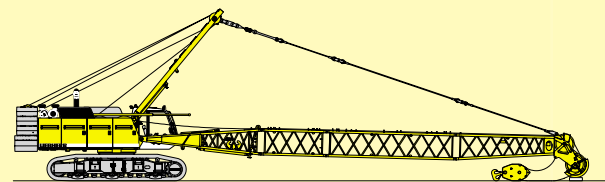
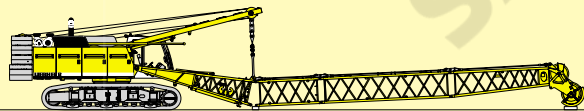
Unloading of basic machine (Standard)



Unloading and assembly of counterweight



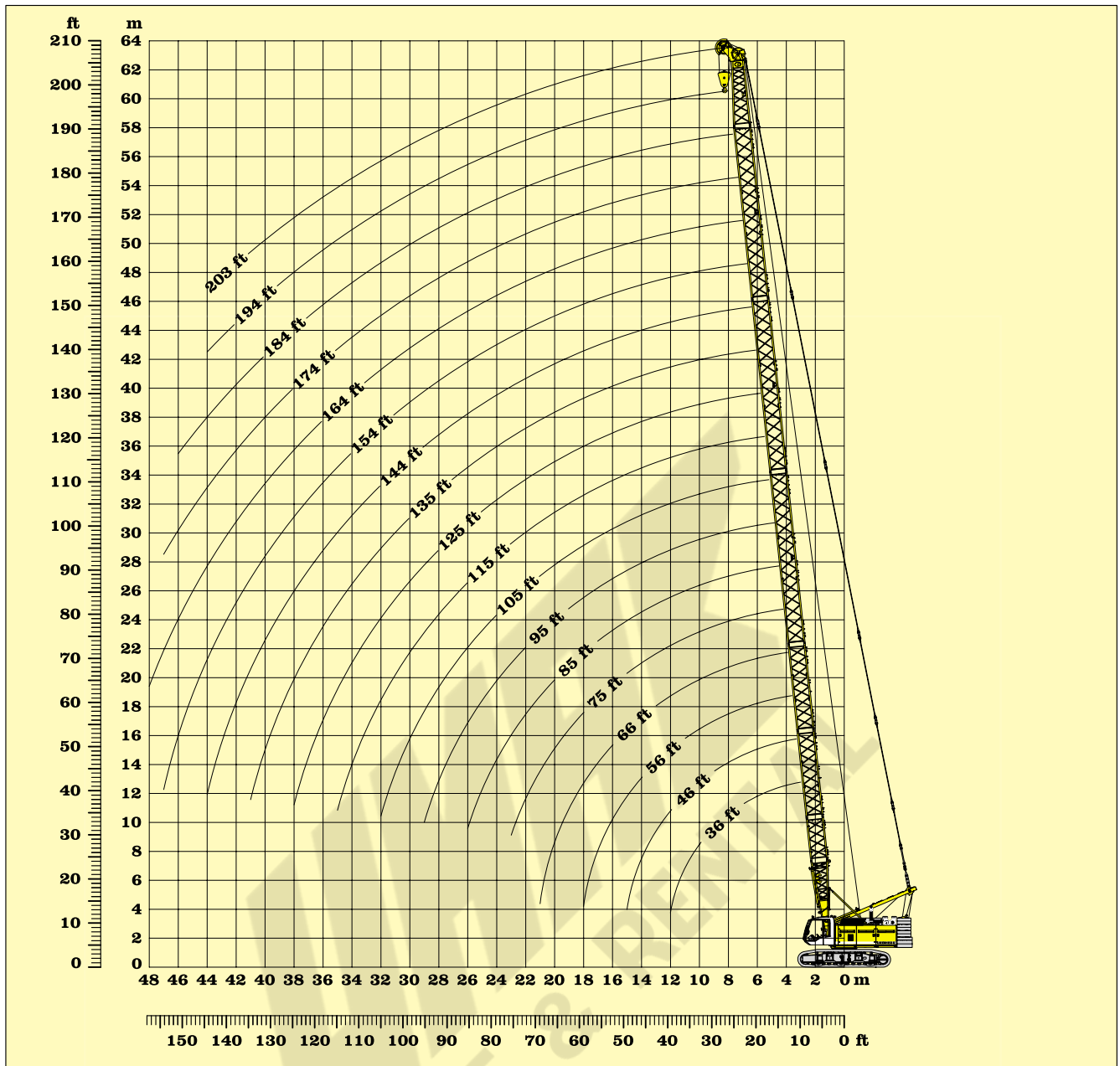
Unloading and assembly of boom



Assembly of boom and reeving of hoist ropes

Self assembly system





Boom configuration

Optimal boom configuration for boom lengths between 36 ft to 226 ft:

	Length	Number of boom extensions																			
Boom foot	18 ft	1	1	1	1	1	1	1	1	1	1	1	1	1	1	1	1	1	1	1	
Boom insert	**10 ft		1		1		1		1		1		1		1		1		1		
Boom insert	**20 ft			1	1	2	2	3	3	2	2	3	3	2	2	3	3	2	2	3	3
Boom insert	**40 ft									1	1	1	1	2	2	2	2	3	3	3	3
Boom head	18 ft	1	1	1	1	1	1	1	1	1	1	1	1	1	1	1	1	1	1	1	1
Boom length (ft)		36	46	56	66	75	85	95	105	115	125	135	144	154	164	174	184	194	203	213	223

**Actual lengths of boom sections are metric (e.g. 3m, 6m, 12m). The figures shown above are approximate conversions to feet.

**Main boom 46 ft to 223 ft
 working range 86° - 15°**

