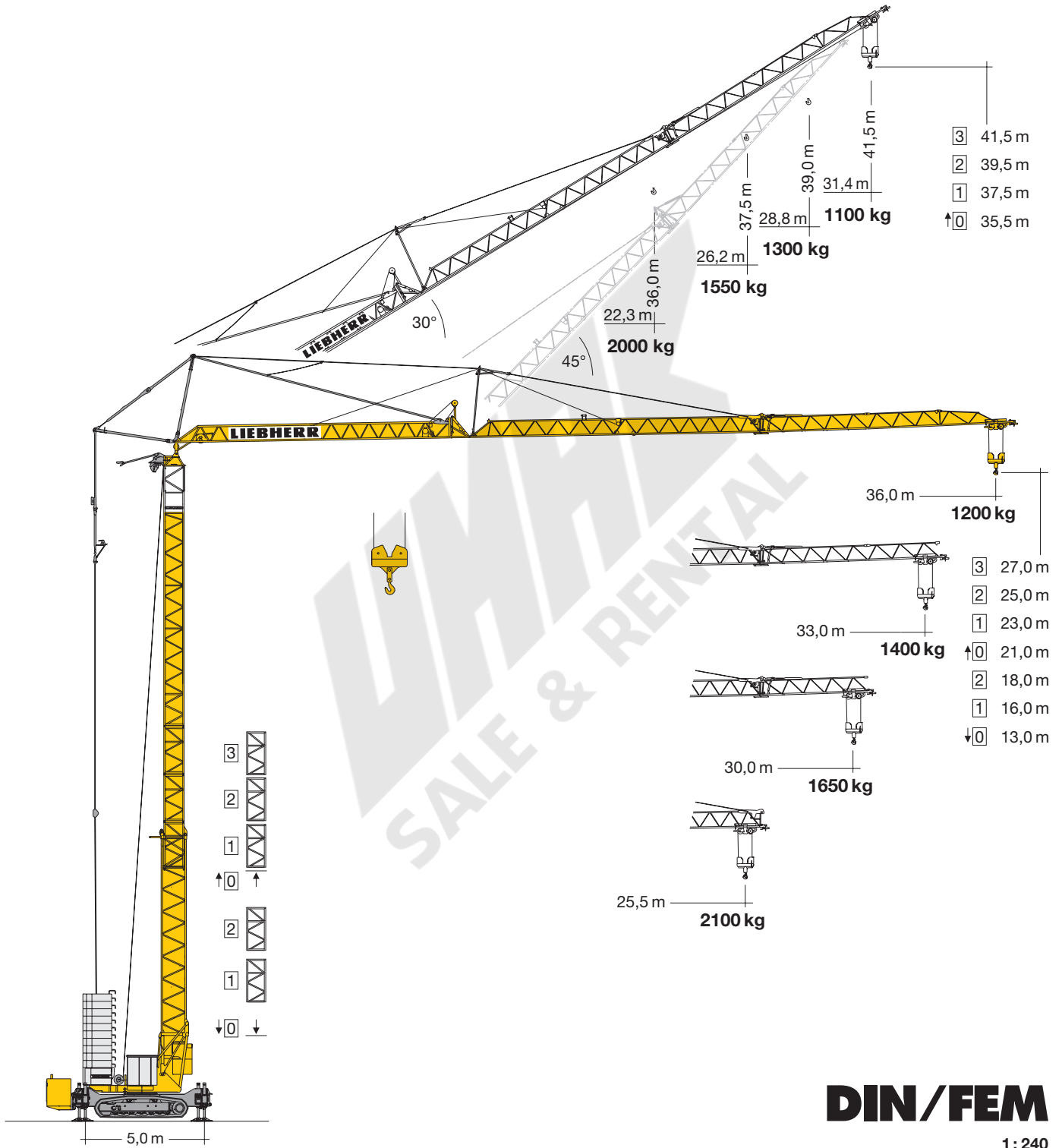


# Turmdrehkran 42 KR.1

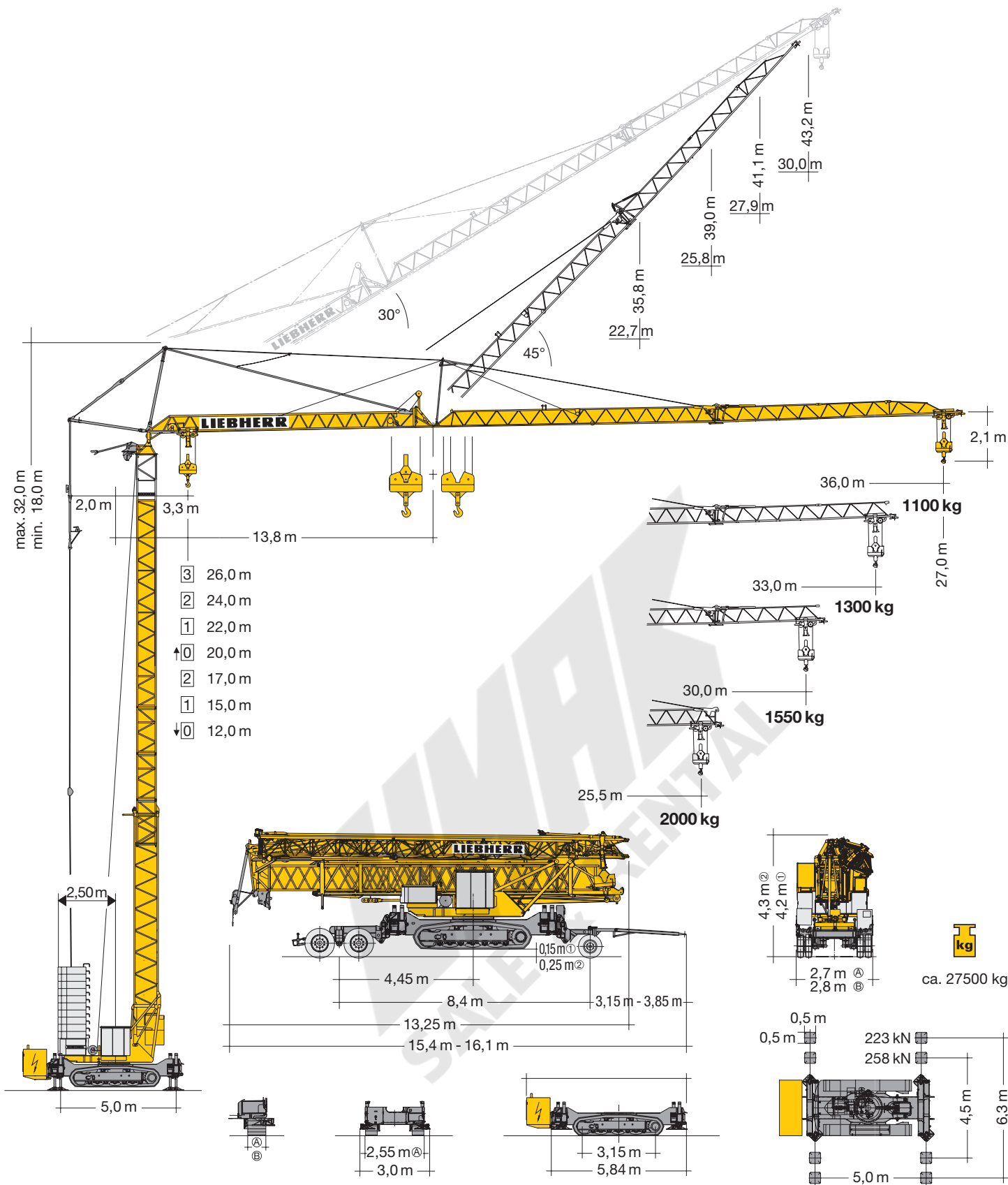
Tower Crane / Grue à tour / Gru a torre  
Grúa torre / Guindaste de torre



**DIN/FEM**

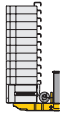

1: 240

# LIEBHERR



## Gewicht

Weight / Poids / Peso / Peso / Pesos

	r = 2,50 m	20820 kg		23020 kg (HH 26 m: + 900 kg)
--	------------	----------	---	---------------------------------

Kettenbreite / Chain width / Largeur de chaîne / Larghezza cingoli  
Anchura de cadena / Comprimento dos rastros ① = 0,5 m / ② = 0,6 m

① 0,15 m  $\triangleq$  4,2 m  
② 0,25 m  $\triangleq$  4,3 m

# Ausladung und Tragfähigkeit

Radius and capacity / Portée et charge / Sbraccio e portata / Alcances y cargas / Alcance e capacidade de carga

		m/kg																			
m/kg		16,0	18,0	20,0	21,0	22,0	23,0	24,0	25,0	<b>25,5</b>	26,0	27,0	28,0	29,0	<b>30,0</b>	31,0	32,0	<b>33,0</b>	34,0	35,0	<b>36,0</b>
<b>36,0</b>	3,3 - 19,40 <b>2500</b>	2500	2500	2410	2280	2160	2050	1950	1860	1810	1770	1690	1620	1560	1490	1440	1380	1330	1290	1240	<b>1200</b>
<b>33,0</b>	3,3 - 20,18 <b>2500</b>	2500	2500	2500	2390	2260	2150	2040	1950	1900	1860	1780	1700	1630	1570	1510	1450	<b>1400</b>			
<b>30,0</b>	3,3 - 21,04 <b>2500</b>	2500	2500	2500	2500	2370	2250	2140	2040	2000	1950	1870	1790	1720	<b>1650</b>						
<b>25,5</b>	3,3 - 21,95 <b>2500</b>	2500	2500	2500	2500	2490	2370	2250	2150	<b>2100</b>											

		m/kg																			
m/kg		13,0	14,0	16,0	18,0	20,0	23,0	24,0	25,0	<b>25,5</b>	26,0	27,0	28,0	29,0	<b>30,0</b>	31,0	32,0	<b>33,0</b>	34,0	35,0	<b>36,0</b>
<b>36,0</b>	3,3 - 22,56 <b>2000</b>	2000	2000	2000	2000	2000	1950	1850	1760	1720	1680	1600	1530	1460	1400	1340	1290	1230	1190	1140	<b>1100</b>
<b>33,0</b>	3,3 - 23,46 <b>2000</b>	2000	2000	2000	2000	2000	2000	1950	1850	1800	1760	1680	1600	1530	1470	1410	1350	<b>1300</b>			
<b>30,0</b>	3,3 - 24,45 <b>2000</b>	2000	2000	2000	2000	2000	2000	2000	1950	1900	1850	1770	1690	1620	<b>1550</b>						
<b>25,5</b>	3,3 - 25,50 <b>2000</b>	2000	2000	2000	2000	2000	2000	2000	2000	<b>2000</b>											

		m/kg																			
m/kg		13,0	14,0	16,0	18,0	20,0	23,0	24,0	25,0	<b>25,5</b>	26,0	27,0	28,0	29,0	<b>30,0</b>	31,0	32,0	<b>33,0</b>	34,0	35,0	<b>36,0</b>
<b>36,0</b>	3,3 - 12,77 <b>4000</b>	3910	3580	3040	2630	2320	1950	1850	1760	1710	1670	1600	1520	1460	1400	1340	1280	1230	1190	1140	<b>1100</b>
<b>33,0</b>	3,3 - 13,25 <b>4000</b>	4000	3740	3180	2760	2430	2050	1940	1850	1800	1760	1680	1600	1530	1470	1410	1350	<b>1300</b>			
<b>30,0</b>	3,3 - 13,79 <b>4000</b>	4000	3930	3340	2900	2550	2150	2050	1950	1900	1850	1770	1690	1620	<b>1550</b>						
<b>25,5</b>	3,3 - 14,36 <b>4000</b>	4000	4000	3510	3050	2690	2270	2150	2050	<b>2000</b>											

		Auslegersteilstellung 30° / Elevated jib 30° / Flèche inclinée 30° Braccio inclinato a 30° / Pluma inclinada 30° / Lança inclinada 30°															
m/kg		16,0	18,0	20,0	<b>22,3</b>	<b>23,0</b>	24,0	25,0	26,0	<b>26,2</b>	27,0	28,0	<b>28,7</b>	29,0	30,0	31,0	<b>31,4</b>
<b>36,0</b>	3,0 - 15,91 <b>2500</b>	2480	2160	1900	1670	1610	1530	1450	1390	1370	1320	1270	1220	1210	1160	1120	<b>1100</b>
<b>33,0</b>	3,0 - 16,67 <b>2500</b>	2500	2280	2010	1770	1700	1620	1540	1470	1460	1400	1340	<b>1300</b>				
<b>30,0</b>	3,0 - 17,51 <b>2500</b>	2500	2420	2140	1880	<b>1810</b>	1720	1640	1560	<b>1550</b>							
<b>25,5</b>	3,0 - 18,45 <b>2500</b>	2500	2500	2270	<b>2000</b>												

# Antriebe

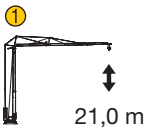
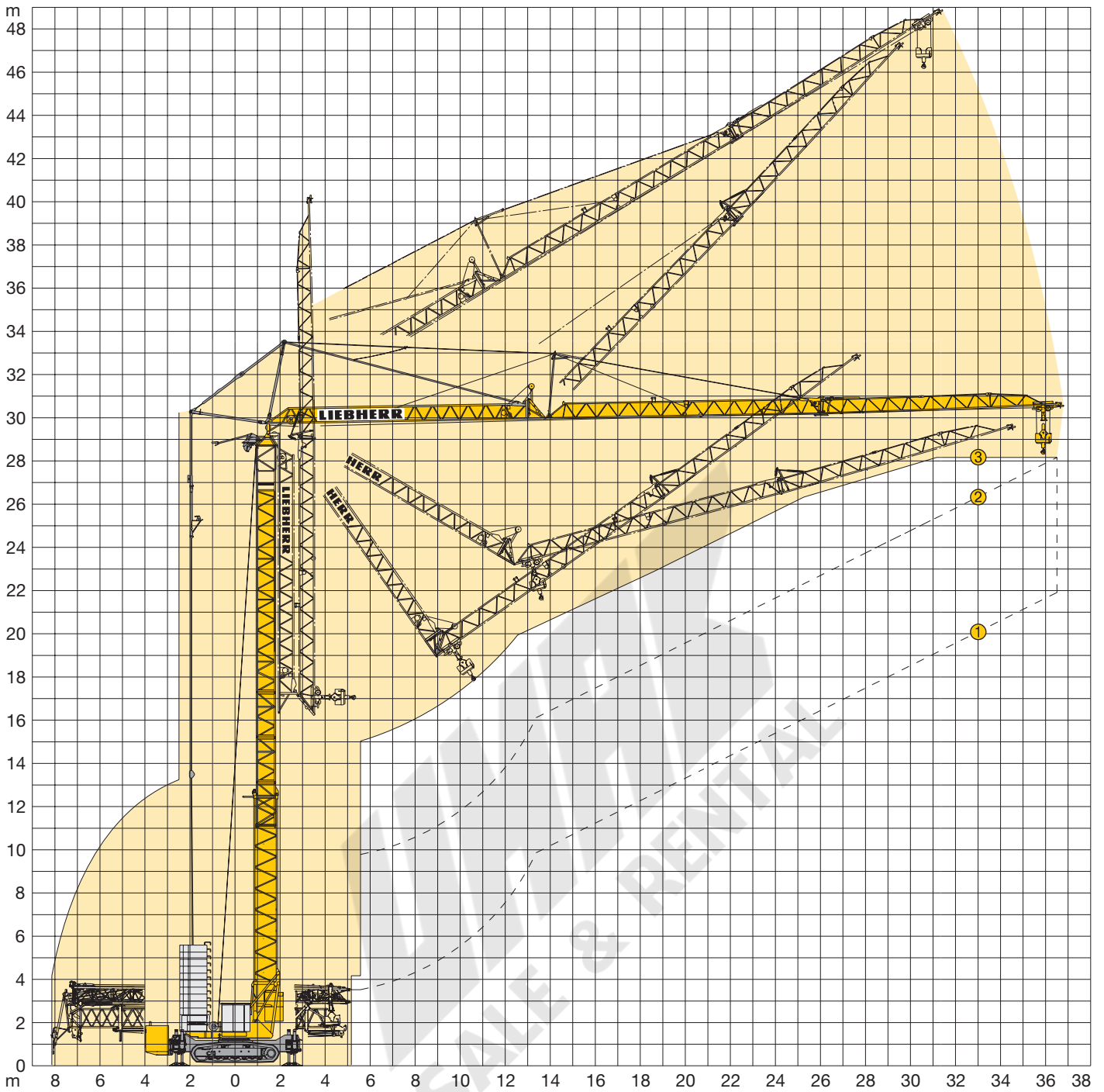
Driving units / Mécanismes d'entraînement / Azionamenti / Mecanismos / Mecanismos

	U/min. 0 ↔ 0,9 sl./min tr./min	3,0 kW EDC
	20,0 / 40,0 m/min	1,3 / 2,3 kW
	25,0 m/min	2 x 1,3 kW
	0 - 45°, ca. 60 sec.	1,5 kW

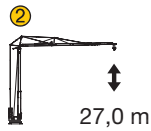
<b>BGL</b>	C.0.08.0045	+  C.0.08.0045
------------	-------------	----------------

	400 V	Hz	kVA
50,0 m	4 x 6 mm <sup>2</sup> KL	50	25,0 KL
77,0 m	4 x 6 mm <sup>2</sup> FU		20,0 FU

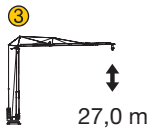
	Stufe / Step / Cran Marcia / Velocidad Velocidade	kg	
			m/min
11,0 kW KL	1	2500	5,0
	2	2500	20,0
	3	1300	40,0
	1	2000 4000	5,0 2,5
	2	2000 4000	20,0 10,0
	3	1300 2600	40,0 20,0
11,0 kW FU	1	2500	4,0
	2	2500	20,0
	3	1300	38,0
	4	1000	50,0
	1	2000 4000	4,0 2,0
	2	2000 4000	20,0 10,0
	3	1300 2600	38,0 19,0
	4	1000 2000	50,0 25,0



**1**  
**ohne Turmstück**  
 without tower section  
 sans éléments de mât  
 senza elementi di torre  
 sin tramo de torre  
 sem tramo de torre



**2**  
**3 Turmstücke**  
 3 tower sections  
 3 éléments de mât  
 3 elementi di torre  
 3 tramos de torre  
 3 tramos de torre



**3**  
**3 Turmstücke**  
 3 tower sections  
 3 éléments de mât  
 3 elementi di torre  
 3 tramos de torre  
 3 tramos de torre

**Ausleger-Luftmontage**  
 Aerial mounting of the jib  
 Montage de la flèche en l'air  
 Montaggio aereo del braccio  
 Montaje aereo de la pluma  
 Montagem aerea da lança

	30 %	25 %	15 %	10 %	7 %
	15 %	15 %	8 %	7 %	3 %
	ca. 14 N/cm <sup>2</sup>	ca. 25 N/cm <sup>2</sup>	ca. 25 N/cm <sup>2</sup>	ca. 25 N/cm <sup>2</sup>	ca. 25 N/cm <sup>2</sup>
$V_{max}$	25 m/min	10 m/min	10 m/min	10 m/min	10 m/min

## Kolli-Liste

Packing List / Liste de colisage / Lista dei colli / Lista de contenido / Lista de embalagem

Pos. Item Rep. Voce Pos. Ref.	Anz. Qty. Qte. Qta. Cant. Cant.				L (m)	B (m)	H (m)	kg	
1	3	<b>Turmstück / Tower section</b> Elément de mât / Elemento di torre Tramo de torre / Peça de torre			2,10	0,85	0,88	350	
2	1	<b>Ausleger-Verlängerung 25,5 m – 30,0 m</b> Jib extension / Rallonge de la flèche Elemento estensione braccio Prolongación de pluma / Extensão da lança			4,70	0,80	0,70	235	
3	1	<b>Ausleger-Verlängerung 30,0 m – 33,0 m</b> Jib extension / Rallonge de la flèche Elemento estensione braccio Prolongación de pluma / Extensão da lança			3,10	0,80	0,70	90	
4	1	<b>Ausleger-Verlängerung 33,0 m – 36,0 m</b> Jib extension / Rallonge de la flèche Elemento estensione braccio Prolongación de pluma / Extensão da lança			3,10	0,80	0,70	70	
5	1	<b>Raupenunterwagen / Crawler undercarriage</b> Châssis à chenilles / Carro cingolato Carro sobre raíles / Carro de lagarta			5,835	2,55 <sup>Ⓐ</sup> 2,65 <sup>Ⓑ</sup>	1,46	12000	
6	1	<b>Stromgenerator mit Konsole / Current generator with bracket</b> Générateur de courant avec semelle Generatore di corrente con supporto / Generator de corriente con consola / Gerador de corrente de consola			72 kVA	2,49	1,03	1,48	1350
7	1	<b>Transportachse vorne Tra 100 KY 6A</b> Road transport axle front / Essieux de transport avant / Asse di trasporto anteriore / Eje delantero para transporte / Eixo de transporte dianteiro			3,65 – 4,15	1,45	1,10	920	
8	1	<b>Transportachse hinten Tra 204 GZ 1</b> Road transport axle behind / Essieux de transport arrière / Asse di trasporto posteriore / Eje trasero para transporte / Eixo de transporte traseiro			2,50	2,50	1,10	1900	
9	1	<b>Kiste mit Seilen und Kleinteilen / Case with ropes and small parts</b> Caisse avec câbles et pièces détachées / Cassa con funi e accessori Caja con cables y piezas sueltas / Caixa contendo cabos e acessórios			1,00	0,80	1,00	450	

**WMAK**  
SALE & RENTAL

**Konstruktionsänderungen vorbehalten!**

Subject to alterations! / Sous réserves de modifications!  
Si fa riserva di modifiche! / Salvo modificação da construação!  
¡Sujeto a modificaciones!

**Sämtliche Angaben erfolgen ohne Gewähr.** / This information is supplied without liability.

Ces renseignements sont sans garantie. / Le indicazioni contenute si intendono salvo errori ed omissioni.  
Declinamos toda responsabilidad derivada de la información proporcionada. / Declinamos qualquer  
responsabilidade quanto à informação fornecida.

**120 P – 4819 H1 B3 DIN 15018 • BGL C.0.08.0045 / FEM (Section1) Krangruppe A3 und OENORM T3 • 04.07 / 6** Printed in Germany.