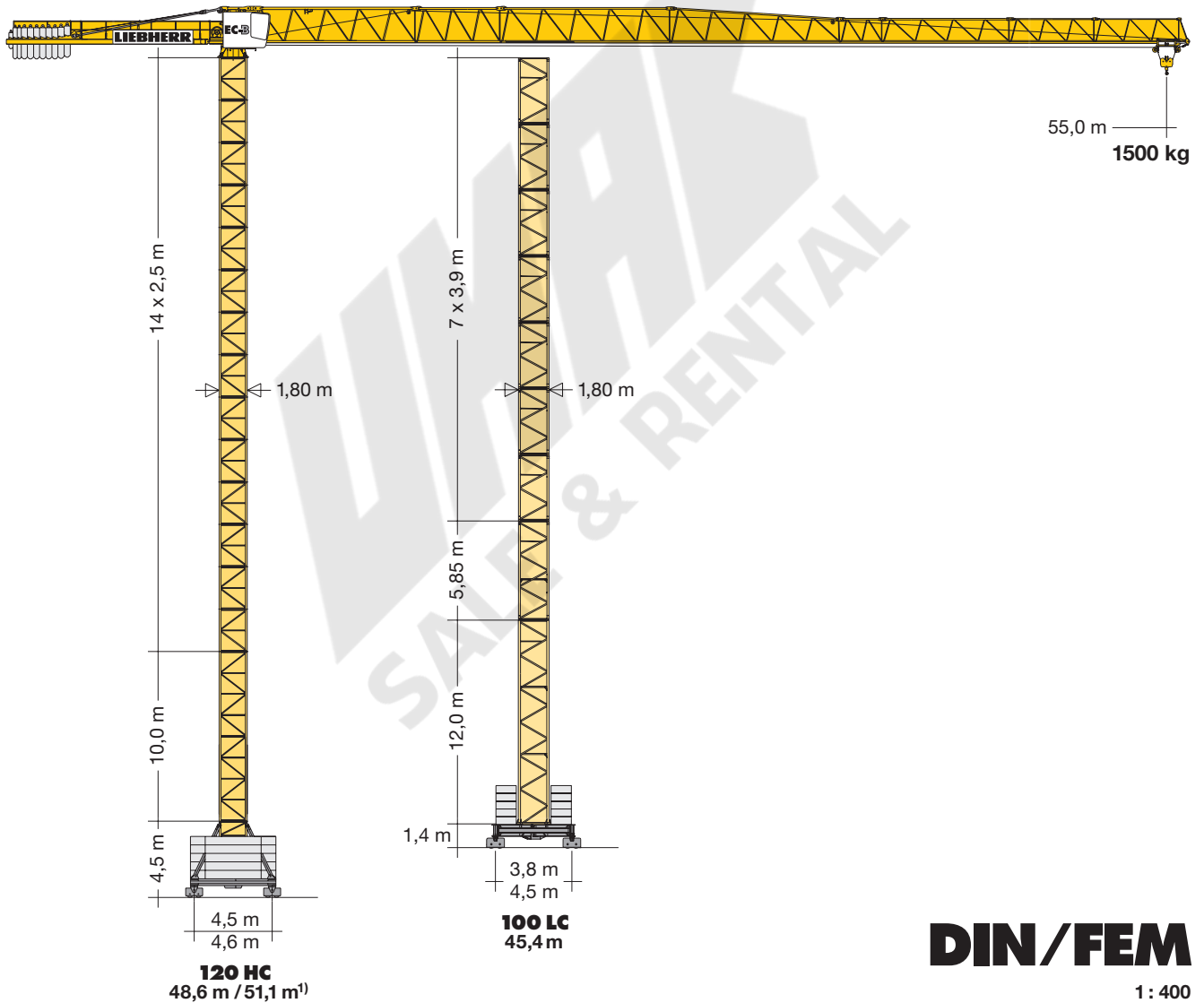


Turmdrehkran 110 EC-B 6

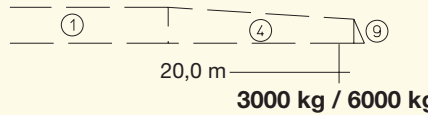
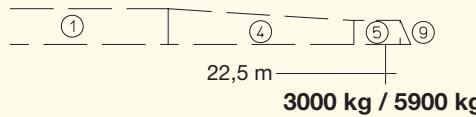
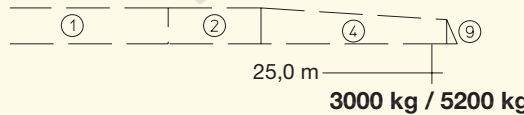
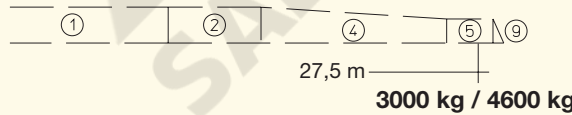
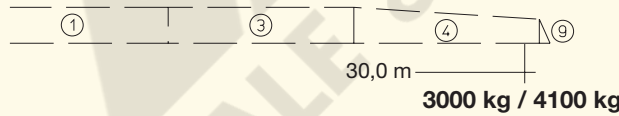
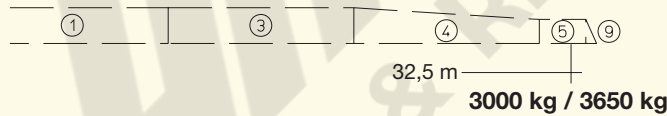
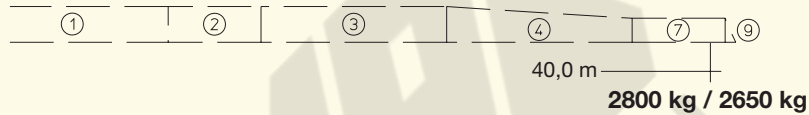
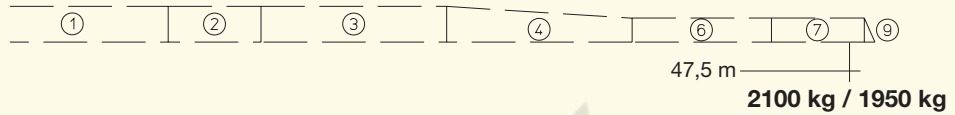
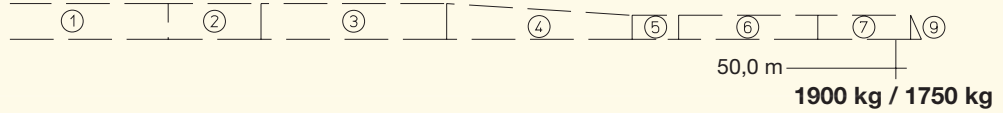
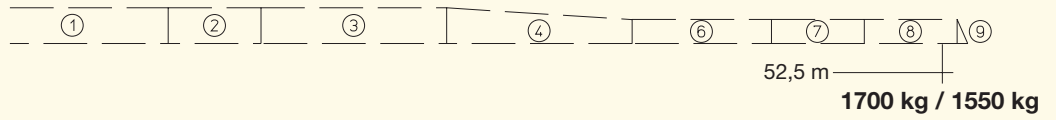
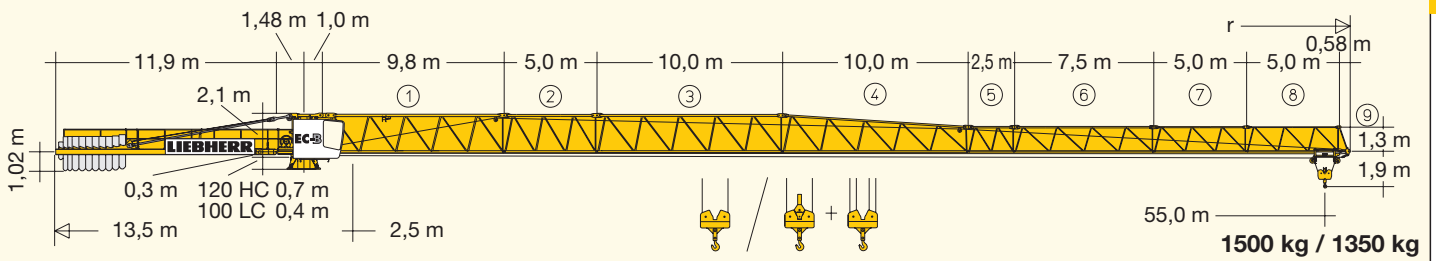
Tower Crane / Grue à tour / Gru a torre
Grúa torre / Guindaste de torre

▶ **110 EC-B 6**

110 EC-B 6 FR.tronic®


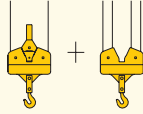


LIEBHERR

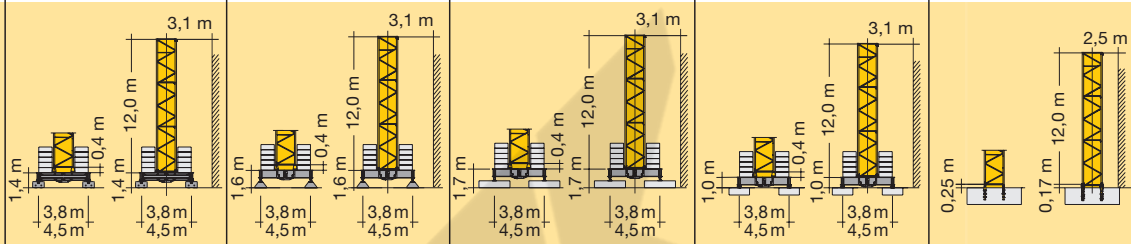


Ausladung und Tragfähigkeit

Radius and capacity / Portée et charge / Sbraccio e portata / Alcances y cargas / Alcance e capacidade de carga

				m/kg														
m	r	m/kg		20,0	22,5	25,0	27,5	30,0	32,5	35,0	37,5	40,0	42,5	45,0	47,5	50,0	52,5	55,0
55,0	(r = 56,5)	2,5-31,1 3000		3000	3000	3000	3000	3000	2860	2620	2410	2240	2080	1940	1810	1700	1590	1500
52,5	(r = 54,0)	2,5-32,8 3000		3000	3000	3000	3000	3000	3000	2780	2560	2380	2210	2060	1930	1810	1700	
50,0	(r = 51,5)	2,5-34,1 3000		3000	3000	3000	3000	3000	3000	2910	2690	2490	2320	2160	2020	1900		
47,5	(r = 49,0)	2,5-35,1 3000		3000	3000	3000	3000	3000	3000	3000	2780	2580	2400	2240	2100			
45,0	(r = 46,5)	2,5-35,9 3000		3000	3000	3000	3000	3000	3000	3000	2850	2650	2460	2300				
42,5	(r = 44,0)	2,5-37,0 3000		3000	3000	3000	3000	3000	3000	3000	2950	2740	2550					
40,0	(r = 41,5)	2,5-37,7 3000		3000	3000	3000	3000	3000	3000	3000	3000	3000	2800					
37,5	(r = 39,0)	2,5-37,5 3000		3000	3000	3000	3000	3000	3000	3000	3000	3000						
35,0	(r = 36,5)	2,5-35,0 3000		3000	3000	3000	3000	3000	3000	3000								
32,5	(r = 34,0)	2,5-32,5 3000		3000	3000	3000	3000	3000	3000									
30,0	(r = 31,5)	2,5-30,0 3000		3000	3000	3000	3000	3000										
27,5	(r = 29,0)	2,5-27,5 3000		3000	3000	3000	3000											
25,0	(r = 26,5)	2,5-25,0 3000		3000	3000	3000												
22,5	(r = 24,0)	2,5-22,5 3000		3000	3000													
20,0	(r = 21,5)	2,5-20,0 3000		3000														
				m/kg														
m	r	m/kg		20,0	22,5	25,0	27,5	30,0	32,5	35,0	37,5	40,0	42,5	45,0	47,5	50,0	52,5	55,0
55,0	(r = 56,5)	2,5-29,9 3000	2,5-17,0 6000	4980	4340	3830	3410	3070	2770	2520	2310	2120	1950	1810	1670	1560	1450	1350
52,5	(r = 54,0)	2,5-31,5 3000	2,5-17,8 6000	5250	4580	4050	3610	3250	2940	2680	2450	2250	2080	1930	1790	1660	1550	
50,0	(r = 51,5)	2,5-32,7 3000	2,5-18,5 6000	5480	4780	4220	3770	3390	3080	2800	2570	2360	2180	2020	1880	1750		
47,5	(r = 49,0)	2,5-33,7 3000	2,5-19,0 6000	5650	4930	4360	3890	3510	3180	2900	2660	2450	2260	2100	1950			
45,0	(r = 46,5)	2,5-34,4 3000	2,5-19,3 6000	5770	5040	4450	3980	3590	3250	2970	2720	2510	2320	2150				
42,5	(r = 44,0)	2,5-35,5 3000	2,5-19,8 6000	5940	5190	4590	4110	3700	3360	3070	2820	2600	2400					
40,0	(r = 41,5)	2,5-36,1 3000	2,5-20,2 6000	6000	5290	4680	4190	3780	3430	3130	2880	2650						
37,5	(r = 39,0)	2,5-37,0 3000	2,5-20,6 6000	6000	5420	4800	4290	3870	3520	3210	2950							
35,0	(r = 36,5)	2,5-35,0 3000	2,5-21,0 6000	6000	5560	4920	4400	3970	3610	3300								
32,5	(r = 34,0)	2,5-32,5 3000	2,5-21,2 6000	6000	5610	4970	4450	4020	3650									
30,0	(r = 31,5)	2,5-30,0 3000	2,5-21,6 6000	6000	5730	5070	4540	4100										
27,5	(r = 29,0)	2,5-27,5 3000	2,5-21,8 6000	6000	5800	5140	4600											
25,0	(r = 26,5)	2,5-25,0 3000	2,5-22,1 6000	6000	5870	5200												
22,5	(r = 24,0)	2,5-22,5 3000	2,5-22,2 6000	6000	5900													
20,0	(r = 21,5)	2,5-20,0 3000	2,5-20,0 6000	6000														

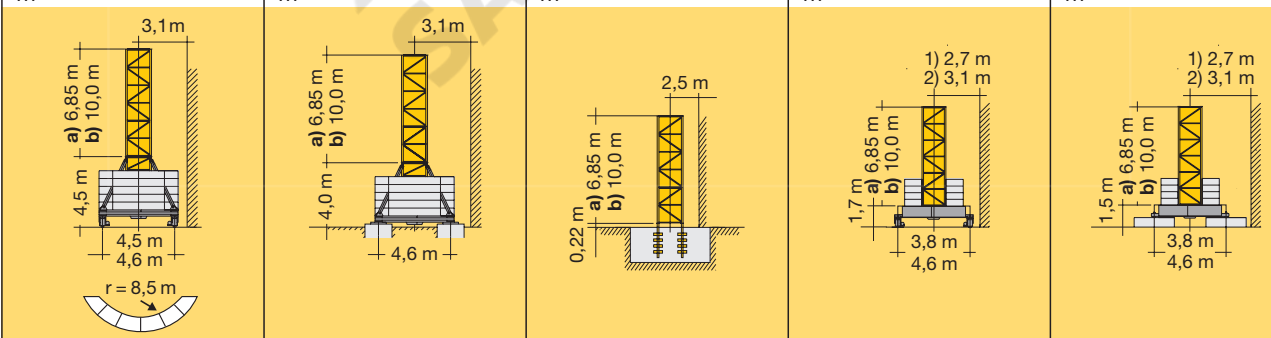
				100 LC											
3,9m	3,9m + 5,85m	5,85m	11,7m												
10	9+1	7		-	-	41,8 ^o	-	41,9 ^o	-	41,2 ^o	-	40,0 ^o	-		
	8+1			-	-	39,8	-	39,9	-	39,2	-	38,1	-		
9		6	3	-	-	37,9	49,5 ^o	38,0	49,6 ^o	37,3	48,9 ^o	36,1	48,1 ^o		
	7+1			-	-	35,9	47,5	36,0	47,6	35,3	46,9	34,2	46,1		
8				33,8	45,4	34,0	45,6	34,1	45,7	33,4	45,0	32,2	44,2		
	6+1	5		31,8	43,4	32,0	43,6	32,1	43,7	31,4	43,0	30,3	42,2		
7				29,9	41,5	30,1	41,7	30,2	41,8	29,5	41,1	28,3	40,3		
	5+1			27,9	39,5	28,1	39,7	28,2	39,8	27,5	39,1	26,4	38,3		
6		4	2	26,0	37,6	26,2	37,8	26,3	37,9	25,6	37,2	24,4	36,4		
	4+1			24,0	35,6	24,2	35,8	24,3	35,9	23,6	35,2	22,5	34,4		
5				22,1	33,7	22,3	33,9	22,4	34,0	21,7	33,3	20,5	32,5		
	3+1	3		20,1	31,7	20,3	31,9	20,4	32,0	19,7	31,3	18,6	30,5		
4				18,2	29,8	18,4	30,0	18,5	30,1	17,8	29,4	16,6	28,6		
	2+1			16,2	27,8	16,4	28,0	16,5	28,1	15,8	27,4	14,7	26,6		
3		2	1	14,3	25,9	14,5	26,1	14,6	26,2	13,9	25,5	12,7	24,7		
	1+1			12,3	23,9	12,5	24,1	12,6	24,2	11,9	23,5	10,8	22,7		
2				10,4	22,0	10,6	22,2	10,7	22,3	10,0	21,6	8,8	20,8		
	0+1	1		8,4	20,0	8,6	20,2	8,7	20,3	8,0	19,6	6,9	18,8		
1				6,5	18,1	6,7	18,3	6,8	18,4	6,1	17,7	4,9	16,9		
0	0	0	0	4,5	16,1	4,7	16,3	4,8	16,4	4,1	16,7	3,0	14,9		
				-	12,2	-	12,4	-	12,5	-	11,8	-	11,0		

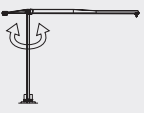
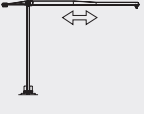
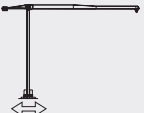






o = Ohne Kabine. / Without cabin. / Sans cabine. / Senza cabina. / Sin cabina. / Sem cabine.

Weitere Hubhöhen sowie Klettern auf Anfrage. / Further hoist heights and climbing on request. / Hauteurs sous crochet plus élevées et hissage sur demande. / Altre altezze di sollevamento come pure telescopaggio, su richiesta. / Para alturas bajo gancho superiores y trepado, consultar. / Outras alturas de elevação e ascensionamento, mediante consulta.

120 HC										
16	-	-	-	-	46,2 ¹⁾	-	-	-	-	-
15	48,0 ²⁾³⁾	51,1 ¹⁾	-	47,5 ²⁾³⁾	43,7 ²⁾³⁾	46,8 ²⁾³⁾	-	45,2 ²⁾³⁾	48,3 ²⁾³⁾	45,0 ²⁾³⁾
14	45,5 ⁴⁾	48,6 ²⁾³⁾	-	45,0 ⁴⁾	41,2 ⁴⁾	44,3 ⁴⁾	-	42,7 ⁴⁾	45,8 ⁴⁾	42,5 ⁴⁾
13	43,0	46,1 ⁴⁾	-	42,5	38,7	41,8	-	40,2	43,3	40,0
12	40,5	43,6	-	40,0	36,2	39,3	-	37,7	40,8	37,5
11	38,0	41,1	-	37,5	33,7	36,8	-	35,2	38,3	35,0
10	35,5	38,6	-	35,0	31,2	34,3	-	32,7	35,8	32,5
9	33,0	36,1	-	32,5	28,7	31,8	-	30,2	33,3	30,0
8	30,5	33,6	-	30,0	26,2	29,3	-	27,7	30,8	27,5
7	28,0	31,1	-	27,5	23,7	26,8	-	25,2	28,3	25,0
6	25,5	28,6	-	25,0	21,2	24,3	-	22,7	25,8	22,5
5	23,0	26,1	-	22,5	18,7	21,8	-	20,2	23,3	20,0
4	20,5	23,6	-	20,0	16,2	19,3	-	17,7	20,8	17,5
3	18,0	21,1	-	17,5	13,7	16,8	-	15,2	18,3	15,0
2	15,5	18,6	-	15,0	11,2	14,3	-	12,7	15,8	12,5
1	13,0	16,1	-	12,5	8,7	11,8	-	10,2	13,3	10,0
0	a) 10,5	b) 13,6	-	a) 10,0	b) 13,1	-	-	a) 7,7	b) 10,8	a) 7,5



	U/min 0 ↔ 0,8 sl./min tr./min	7,5 kW FU
	0 ↔ 63,0 m/min 0 ↔ 80,0 m/min	3,0 kW FU 5,4 kW FU
	25,0 m/min	2 x 4,0 kW
	kVA	22,0 kW 22,0 kW FU 30,0 28,0








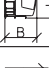
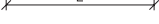
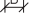
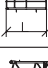







	Stufe / Step Cran / Marcia Marcha / Marcha	kg	m/min
3,8 / 18,5 / 22,0 kW WIW 230 MZ 402	5 Lagen Layers Couches Strati Camadas Capas		
	149,0 / 74,0 m LS-Trommel		
	217,0 / 108,0 m**		
22,0 kW FU WIW 230 MZ 404	5 Lagen Layers Couches Strati Camadas Capas		
	149,0 / 74,0 m LS-Trommel		
	217,0 / 108,0 m**		

** Weitere Hublastdaten: siehe Betriebsanleitung. / Further hoist load data: see instruction manual. / Autres données de la charge de levage: voir manuel d'instruction. / Altri dati sui carichi sollevati: consultare il manuale d'istruzione. / Alturas bajo granco superiores según manual. / Outras tabelas de carga: consultar manual de instruções.

Kolli-Liste

Packing List / Liste de colisage / Lista dei colli / Lista de contenido / Lista de embalagem

Montagegewichte: siehe Betriebsanleitung. / Erection weights: see instruction manual. / Poids de montage: voir manuel de service. / Pesi di montaggio: vedasi le istruzioni sull'uso. / Peso para el montaje: según manual. / Pesos de montagem: veja-se as instruções p. uso.

Kranoberteil		Upper part of crane / Partie supérieure de grue / Parte superiore della gru	L (m)	B (m)	H (m)	kg*		
Pos. Item	Anz. Qty.	Parte superior grúa / Parte superior do guindaste						
1	1	Drehbühne mit Podesten / Slewing platform with platforms Plate-forme tournante avec plates-formes / Piattaforma girevole con pedana / Plataforma giratoria con plataforma Plataforma giratória com plataforma			2,71	2,90	2,58	5720
2	1	Drehbühne / Slewing platform Ensemble mât cabine / Piattaforma girevole / Conjunto plataforma de giro Plataforma giratória compl.			2,71	2,25	2,58	5440
3	1	Podeste / Platforms Plates-formes / Pedana Plataformas / Plataformas			2,33 2,40 2,33	0,50 1,04 0,65	1,36 1,33 1,36	120 150 120
4	1	Kabine / Cabin Cabine / Cabina Cabina / Cabina			1,35	2,82	2,28	610
5	1	Gegenausleger / Counter-jib Contre-flèche / Contrabaccio Contrapluma / Contra-lança			11,98	1,40	0,81	2720
6	1	Podeste Gegenausleger / Counter-jib platforms Plates-formes de contre-flèche / Ballatoi controfreccia Plataforma contrapluma / Plataforma contra-lança			4,00	0,69	1,35	180
7	1	Ausleger-Anlenkstück / Jib heel section Pied de flèche / Settore articolato di braccio Pluma tramo primero / Base articulada de lança			10,01	1,34	2,23	① 2350
8	1	Ausleger-Zwischenstück / Intermediate jib section Élément intermédiaire de flèche / Spezzone di braccio Tramo intermedio pluma / Peça suplementar da lança			5,27 10,26 2,72 7,71 5,19 5,17	1,20 1,20 1,20 1,20 1,20 1,20	2,15 2,14 1,48 1,48 1,46 1,45	② 740 ③ 1180 ④ 200 ⑤ 500 ⑥ 230 ⑦ 200
9	1	Ausleger-Zwischenstück / Intermediate jib section Élément intermédiaire de flèche / Spezzone di braccio Tramo intermedio pluma / Peça suplementar da lança			10,22	1,20	2,08	⑧ 850

Pos. Item Rep. Voce Pos. Ref.	Anz. Qty. Qta. Cant. Cant.				L (m)	B (m)	H (m)	kg*
10	1	Ausleger-Kopfstück / Jib head section Pointe de flèche / Punta freccia Tramo punta de pluma / Cabeça de lança			1,40	1,21	0,46	⊗ 80
11	1	Laufkatze / Trolley Chariot / Carrello Carrito / Carrinho			1,62	1,38	1,29	216
12	1	Fahrkorb / Maintenance cage Nacelle d'entretien / Cestello di manutenzione Plataforma de mantenimiento			0,78	0,66	1,25	35
Turm Tower / Mât / Torre Torre / Torre								
13	1	Grundturmstück / Base tower section Mât de base / Elemento di torre base Tramo base / Peça de base de torre			100 LC 12,00 120 HC 6,85 120 HC 10,00	2,03 1,80 1,80	2,03 1,80 1,80	3820 2610 3530
					3,90 m 100 LC 4,17 5,85 m 100 LC 6,12 11,70 m 100 LC 11,97	1,80 1,80 1,80	1,80 1,80 1,80	1190 1620 2930
14	1	Turmstück / Tower section Elément de mât / Elemento di torre Tramo torre / Torre			120 HC 2,50 120 HC 5,00 120 HC 10,00 120 HC 12,50	1,80 1,80 1,80 1,80	1,80 1,80 1,80 1,80	1090 1830 3430 4200
Klettereinrichtung Climbing equipment / Equipement de télescopage / Attrezzatura per allungamento della gru Equipo de trepado / Acessórios p. subida no edifício								
15	1	Führungsstück kpl. / Guide section cpl. Cage télescopique cpl. / Gabbia de sopraelevazione compl. / Torre de montaje completa / Peça de guia compl.			100 LC 8,74 120 HC 6,45 120 HC 9,60	2,27 2,10 2,10	2,35 2,42 2,42	3130 3500 4440
16	1	Führungsstück Turmstück / Tower guide section / Elément de mât télescopique Gabbia de sopraelevazione / Peça de guia Tramo torre de montaje			100 LC 4,17	2,26	2,26	1440
17	1	Kletterturmstück / Climbing tower section Elément de hissage de mât / Elemento torre di telescopaggio / Tramo de trepado Tramo de telescopagem			120 HC 2,75	2,20	2,45	1450
18	1	Hydraulikanlage, Stütz- und Klettertraverse / Hydraulic unit, supporting and climbing cross members / Système hydraul. avec traverses d'appui et de télescop. / Sist. idraul., traversa di appoggio e allugam. gru / Sistema hidráulico con traviesa de apoyo y trepado / Instalação hidráulica, travessa de apoio e subida			100 LC 2,00 120 HC 2,87	0,90 2,12	0,80 1,06	640 1050
Fundamentkreuz Cruciform base / Châssis en croix / Carro della gru Carro de guindaste / Base cruciforme								
19	1	Tragholm I / Arm I Longeron I / Longherone I Brazo I / Travessa I			(3,8 m) 100 LC 5,68 (4,5 m) 100 LC 6,67 120 HC 7,12	0,71 0,71 0,78	0,91 0,91 0,65	2090 2190 950
20	1	Tragholm II / Arm II Longeron II / Longherone II Brazo II / Travessa II			(3,8 m) 100 LC 5,68 (4,5 m) 100 LC 6,67 120 HC 3,45	0,78 0,78 0,56	0,74 0,74 0,55	1870 1970 408
21	2	Fahrschemel mit Antrieb / Rail bogie with drive / Bogie moteur / Telajo con gruppa propulsore / Caja rodillo motriz Quadra sem grupa de propulsão			100 LC 1,31 120 HC 1,38	0,66 0,88	0,61 0,87	630 900
22	2	Fahrschemel ohne Antrieb / Rail bogie without drive / Bogie fou / Telajo senza gruppa propulsore / Caja rodillo conducido Quadra com grupa de propulsão			100 LC 1,04 120 HC 1,17	0,33 0,60	0,61 0,87	330 860

* Einzelgewichte. / Single weights. / Poids individuels. / Pesì di componenti. / Pesos unitarios. / Pesos de peças componentes.

Konstruktionsänderungen vorbehalten!

Subject to alterations! / Sous réserves de modifications!
Si fa riserva di modifiche! / ¡Sujeto a modificaciones!
Salvo modificação da construçao!

Sämtliche Angaben erfolgen ohne Gewähr. / This information is supplied without liability.

Ces renseignements sont sans garantie. / Le indicazioni contenute si intendono salvo errori ed omissioni.
Declinamos toda responsabilidad derivada de la información proporcionada. / Declinamos qualquer
responsabilidade quanto à informação fornecida.

121 P – 5159 H1 B3 DIN 15018 • BGL C.0.10.0100 / FEM (Section 1) – Krangruppe A3 • 04.07 / 6

Printed in Germany.