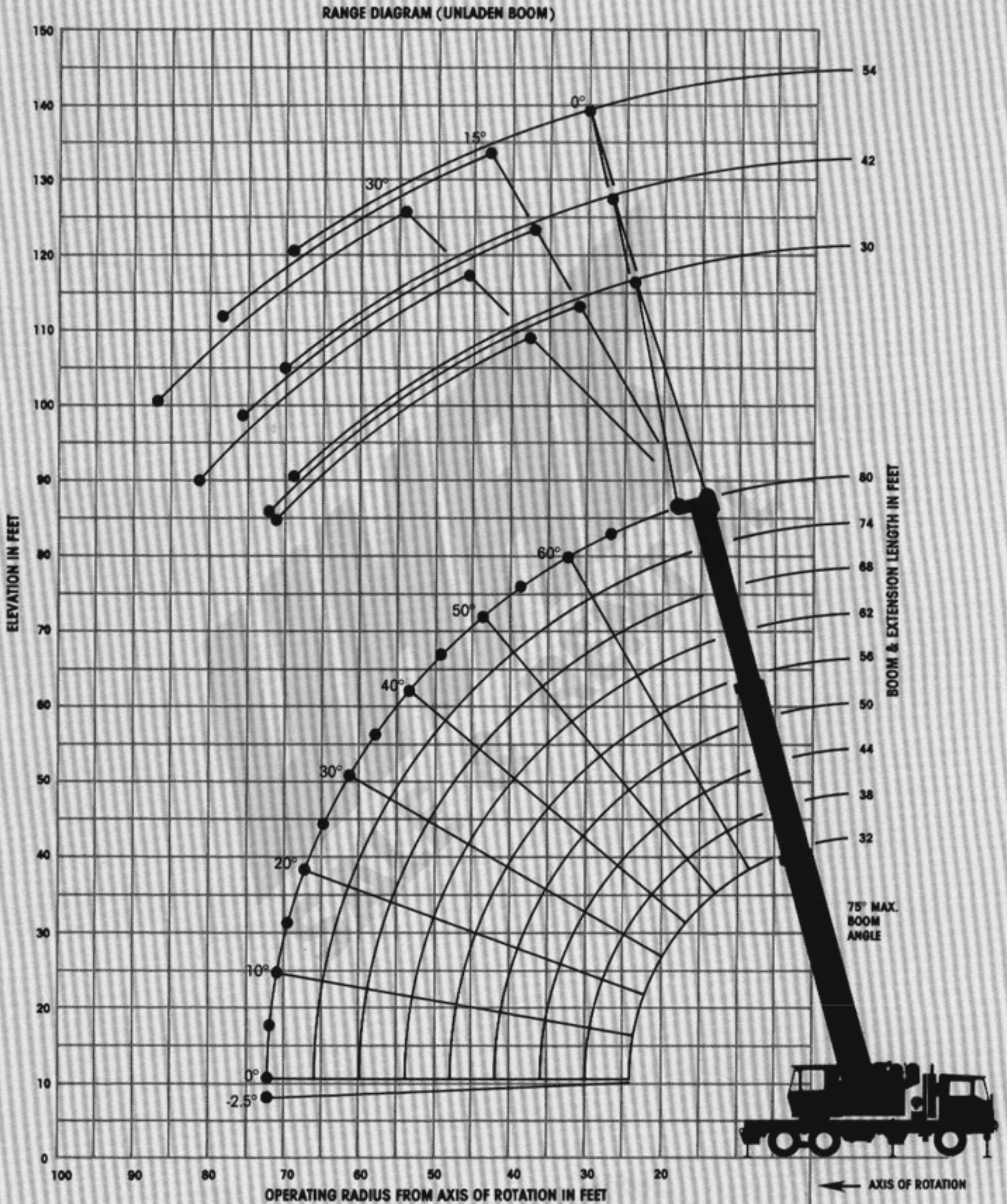




# TMS528B

85% Domestic/32 ft.-80 ft. Boom





**RATED LIFTING CAPACITIES (POUNDS)  
32 FT. - 80 FT. BOOM  
ON OUTRIGGERS FULLY EXTENDED - 360°**

Radius in Feet	Main Boom Length in Feet								
	32	38	44	50	56	62	68	74	80
10	56,000 (63)	39,500 (67.5)	37,500 (71)	36,950 (74)					
12	41,300 (58.5)	37,000 (64)	36,000 (68.5)	35,000 (71.5)	32,400 (74)				
15	31,750 (52)	31,500 (59)	30,950 (64)	30,300 (67.5)	29,750 (70.5)	29,150 (73)			
20	24,050 (38)	24,050 (49)	24,050 (56)	24,050 (61)	23,800 (65)	23,400 (68)	22,250 (70.5)	20,500 (72.5)	19,000 (74)
25	17,150 (9.5)	17,150 (37.5)	17,150 (47.5)	17,150 (54)	17,150 (59)	17,150 (63)	17,150 (66)	17,150 (68)	16,600 (70.5)
30		12,400 (18.5)	12,400 (37)	12,400 (46)	12,400 (52.5)	12,400 (57.5)	12,400 (61)	12,400 (64)	12,400 (66.5)
35			9,380 (21.5)	9,380 (37)	9,380 (45)	9,380 (51.5)	9,380 (56)	9,380 (59.5)	9,380 (62.5)
40				7,290 (24)	7,290 (37)	7,290 (45)	7,290 (50.5)	7,290 (54.5)	7,290 (58)
45					5,760 (25.5)	5,760 (37.5)	5,760 (44)	5,760 (49.5)	5,760 (53.5)
50						4,590 (28)	4,590 (37)	4,590 (43.5)	4,590 (48.5)
55							3,680 (28.5)	3,680 (37)	3,680 (43.5)
60							2,940 (14)	2,940 (29)	2,940 (37.5)
65								2,330 (17.5)	2,330 (30)
70									1,820 (20)
Minimum boom angle (deg.) for indicated length (no load)									0
Maximum boom length (ft.) at 0 deg. boom angle (no load)									80

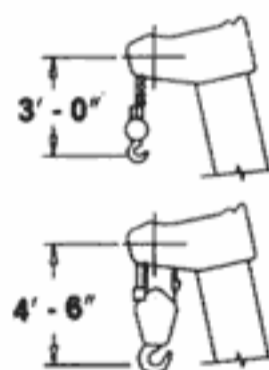
Note: Boom angles are in degrees.

A6-829-007297A & -006832

**30 FT. FIXED LENGTH BOOM EXTENSION  
ON OUTRIGGERS - 360°**

Main Boom Angle (Deg.)	0° OFFSET		15° OFFSET		30° OFFSET	
	Rad. Ref. ft.	Cap. lbs.	Rad. Ref. ft.	Cap. lbs.	Rad. Ref. ft.	Cap. lbs.
75	31.7	10,350	37.2	7,660	42.7	5,310
70	40.0	8,480	45.2	5,990	50.5	4,770
65	48.0	5,800	53.0	4,670	57.8	3,810
60	55.7	4,150	60.2	3,430	64.7	2,850
55	62.8	3,070	67.1	2,570	71.2	2,150
50	69.6	2,300	73.3	1,950	77.0	1,640
45	75.7	1,730	79.0	1,480	82.2	1,260

A6-829-007316C



DIMENSIONS ARE FOR LARGEST GROVE FURNISHED HOOK BLOCK AND HEADACHE BALL WITH ANTI-TWO BLOCK ACTIVATED.

**30 FT. - 54 FT. TELE. BOOM EXTENSION  
ON OUTRIGGERS - 360°**

Main Boom Angle (Deg.)	30 ft. LENGTH						42 ft. LENGTH						54 ft. LENGTH					
	0° OFFSET		15° OFFSET		30° OFFSET		0° OFFSET		15° OFFSET		30° OFFSET		0° OFFSET		15° OFFSET		30° OFFSET	
	Rad. Ref. ft.	Cap. lbs.	Rad. Ref. ft.	Cap. lbs.	Rad. Ref. ft.	Cap. lbs.	Rad. Ref. ft.	Cap. lbs.	Rad. Ref. ft.	Cap. lbs.	Rad. Ref. ft.	Cap. lbs.	Rad. Ref. ft.	Cap. lbs.	Rad. Ref. ft.	Cap. lbs.	Rad. Ref. ft.	Cap. lbs.
75	31.7	10,000	37.2	7,300	42.7	4,950	35.9	7,700	43.7	5,090	51.7	3,750	39.6	6,150	50.7	3,750	61.9	2,690
70	40.0	7,980	45.2	5,630	50.5	4,410	45.2	6,950	52.7	4,360	60.2	3,300	49.8	5,340	60.4	3,300	70.9	2,480
65	48.0	5,290	53.0	4,140	57.8	3,270	54.1	4,850	61.2	3,540	68.2	2,570	59.8	4,280	69.7	2,840	79.5	1,830
60	55.7	3,640	60.2	2,900	64.7	2,310	62.7	3,310	69.2	2,450	75.7	1,770	69.3	2,900	78.4	1,930	87.4	1,200
55	62.8	2,550	67.1	2,040	71.2	1,620	70.7	2,280	76.7	1,680	82.6	1,190						
50	69.6	1,770	73.3	1,420														

A6-829-007309C

**RATED LIFTING CAPACITIES (POUNDS)  
32 FT. - 80 FT. BOOM  
ON OUTRIGGERS FULLY EXTENDED - OVER REAR**

Radius in Feet	Main Boom Length in Feet								
	32	38	44	50	56	62	68	74	80
10	56,000 (63)	39,500 (67.5)	37,500 (71)	36,950 (74)					
12	41,300 (58.5)	37,000 (64)	36,000 (68.5)	35,000 (71.5)	32,400 (74)				
15	31,750 (52)	31,500 (59)	30,950 (64)	30,300 (67.5)	29,750 (70.5)	29,150 (73)			
20	24,050 (38)	24,050 (49)	24,050 (56)	24,050 (61)	23,800 (65)	23,400 (68)	22,250 (70.5)	20,500 (72.5)	19,000 (74)
25	17,150 (9.5)	17,150 (37.5)	17,150 (47.5)	17,150 (54)	17,150 (59)	17,150 (63)	17,150 (65)	17,150 (68)	16,600 (70.5)
30		12,900 (18.5)	12,900 (37)	12,900 (46)	12,900 (52.5)	12,900 (57.5)	12,900 (61)	12,900 (64)	12,900 (66.5)
35			10,000 (21.5)	10,000 (37)	10,000 (45)	10,000 (51.5)	10,000 (56)	10,000 (59.5)	10,000 (62.5)
40				7,990 (24)	7,990 (37)	7,990 (45)	7,990 (50.5)	7,990 (54.5)	7,990 (58)
45					6,450 (25.5)	6,450 (37.5)	6,450 (44)	6,450 (49.5)	6,450 (53.5)
50						5,250 (28)	5,250 (37)	5,250 (43.5)	5,250 (48.5)
55							4,280 (28.5)	4,280 (37)	4,280 (43.5)
60							3,490 (14)	3,490 (29)	3,490 (37.5)
65								2,840 (17.5)	2,840 (30)
70									2,280 (20)
Minimum boom angle (deg.) for indicated length (no load)									0
Maximum boom length (ft.) at 0 deg. boom angle (no load)									80

Note: Boom angles are in degrees.

AG-829-007291A & -006832

**WEIGHT REDUCTIONS FOR  
LOAD HANDLING DEVICES**

30 FT. EXTENSION WITH 32 FT. - 80 FT. BOOM	
†Stowed -	285 lbs.
†Erected -	3,264 lbs.

30 FT. - 54 FT. TELE. EXTENSION WITH 30 FT. - 80 FT. BOOM	
†Stowed -	398 lbs.
†Erected (Retracted) -	5,043 lbs.
†Erected (Extended) -	6,761 lbs.

†Reduction of main boom capacities.

HOOKBLOCKS	
12 Ton, 1 Sheave	360 lbs.
15 Ton, 2 Sheave	290 lbs.
35 Ton, 4 Sheave	600 lbs.
Auxiliary Boom Head	100 lbs.
5 Ton Headache Ball	172 lbs.



# NOTES FOR LIFTING CAPACITIES

**“WARNING: THIS CHART IS ONLY A GUIDE. The Notes below are for illustration only and should not be relied upon to operate the crane. The individual crane’s load chart, operating instructions and other instruction plates must be read and understood prior to operating the crane.”**

1. All rated loads have been tested to and meet minimum requirements of SAE J1063 OCT80 - Cantilevered Boom Crane Structures - Method of Test, and do not exceed 85% of the tipping load on outriggers as determined by SAE J765 OCT80 Crane Stability Test Code.
2. Capacities given do not include the weight of hookblocks, slings, auxiliary lifting equipment and load handling devices. Their weights **MUST** be added to the load to be lifted. When more than minimum required reeving is used, the additional rope weight shall be considered part of the load.
3. Capacities appearing above the bold line are based on structural strength and tipping should not be relied upon as a capacity limitation.
4. All capacities are for crane on firm, level surface. It may be necessary to have structural supports under the outrigger floats or tires to spread the load to a larger bearing surface.
5. When either boom length or radius or both are between values listed, the smallest load shown at either the next larger radius or boom length shall be used.
6. For outrigger operation, ALL outriggers shall be fully extended with tires raised free of ground before raising the boom or lifting loads.
7. With tele boom extension in working position and main boom length greater than 38 ft., boom angle must not be less than 57°, since loss of stability will occur causing a tipping condition.

Constant improvement and engineering progress makes it necessary that we reserve the right to make specification, equipment, and price changes without notice. Illustrations shown may include optional equipment and accessories and may not include all standard equipment.

*North and South America, U.S.S.R., Far East, Australasia*

## **GROVE MANUFACTURING COMPANY**

Box 21 ■ Shady Grove ■ Pennsylvania 17256  
(717) 597-8121 ■ telex: 842308 ■ fax: (717) 597-4062

*Europe, Africa, Middle East, Indian Sub-continent*

## **GROVE**

Sunderland ■ SR4 6TT ■ England  
(091) 565 6281 ■ telex: 53506 CRANES G ■ fax: (091) 564 0442

FORM NO: LCTMS528B-Dom.-32'-80' Boom 1289-5M-FB PRINTED IN U.S.A.