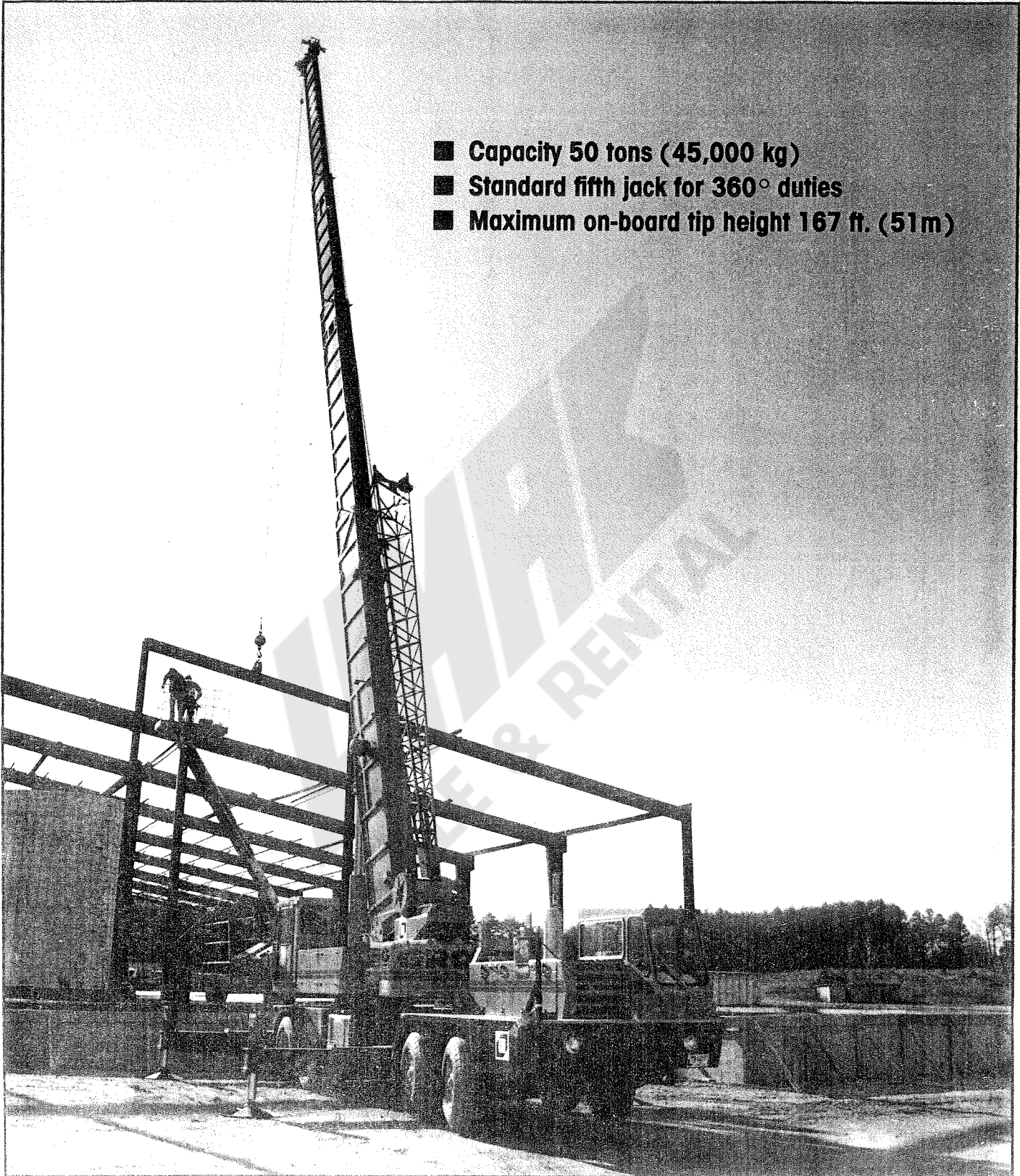




TMS475

Truck-mounted hydraulic crane

- Capacity 50 tons (45,000 kg)
- Standard fifth jack for 360° duties
- Maximum on-board tip height 167 ft. (51m)



Carrier specifications

Frame	High strength alloy steel all welded box-type construction with integral outrigger boxes and front/rear lifting, towing and tie down lugs.
Outrigger System	Hydraulic double stage double box telescopic beam and jack outriggers with integral holding valves. All steel fabricated quick release type outrigger floats 30" (762mm) diameter. Standard fifth front stabilizer for 360° duties.
Outrigger Controls	Located in superstructure cab. Push button controls requiring two-handed operation for safety. Crane level indicator (sight bubble) adjacent to controls.
Engine	6-71N six cylinder, naturally aspirated water cooled diesel, 426 cu. in. (7 L) 230 bhp (172 kw) (Gross) @ 2100 RPM. Maximum torque 611 ft. lbs. (84.5 kg/m) @ 1600 RPM.
Fuel Tank Capacity	(1) 90 gallon (341 L)
Electrical System	Four 12 volt - maintenance free batteries, 24 volt starting.
Drive	8 x 4
Steering	Front axle steering, cam and lever type with hydraulic assist.
Transmission	Manual with 13 speeds forward and 3 reverse.
Axles	Front: Rockwell beam type steer axles. Rear: Rockwell SSHD drive tandem, with inter-axle differential and dash mounted control.
Suspension	Front axles (1 & 2) spring mounted tandem. Rear axles (3 & 4) solid mount tandem with equalizing beam and solid steel saddles.
Tires	Front: 15.00x22.5-16PR duplex highway tread tubeless singles. Rear: 11:00x20-14PR highway tread tube type duals.
Optional Tires	Front: 16.5x22.5-16PR duplex highway tread tubeless and 12:00x20-18PR Michelin radial tube type. Rear: 11:00x20-14PR highway tread SRL-1 or HCT tube type radial and 12.00x20-18PR radial tube type.
Brakes	Full air on all wheels. Air dryer provided to preclude moisture accumulation. Spring set emergency brake on both rear axles with emergency release.

Lights	Full lighting including head, tail, braking, reversing, directional and hazard warning lights.
Cab	One man design, all steel fabricated with acoustical lining and tinted safety glass throughout. Deluxe fabric covered fully adjustable seat. Complete driving controls and engine instrumentation including tachometer, speedometer, voltmeter, water temp. oil pressure, fuel level, air pressure gauge. Other standard items include hot water heater/defroster, electric windshield wash/wipe, fire extinguisher, seat belt and door and window locks.
Maximum Speed	51.5 MPH (82.9 kph)
Gross Vehicle Weight & Axle Loads	BASIC STANDARD MACHINE Front Tandem: 32,830 lbs. (14,892 kgs) Rear Tandem: 44,170 lbs. (20,098 kgs) G.V.W.: 77,000 lbs. (34,927 kgs) (includes 32 ft. swingaway)
Miscellaneous Standard Equipment	Dual rear view mirrors, hookblock tiedown sling, electronic back-up alarm, light package.
Optional Equipment	Immersion engine block heater, engine low oil pressure/high water temperature, audio visual warning. Jacobs engine brake, tire inflation kit.

†Patented Grove feature or patent pending.
*Denotes optional equipment.

Superstructure specifications

Boom	34 ft. to 84 ft. (10.4m - 25.6m) three section Trapezoidal† full power boom. Telescopic sections slide on adjustable and replaceable nylon pads. Maximum tip height: 90 ft. (27.4m).
Optional Boom	35 ft. to 110 ft. (10.7m - 33.5m) four section Trapezoidal† power pinned boom. Telescopic sections slide on adjustable and replaceable nylon pads. Maximum tip height: 115 ft. (35m).
Swingaway Extension	32 ft. (9.8m) lattice swingaway boom extension stows alongside base boom section when not in use. Maximum tip height: 120 ft. (36.5m).
Optional Jib	24 ft. (7.3m) "A" Frame Jib used with standard 32 ft. (9.8m) swingaway extension. Stowable on deck for travel purposes.
Boom Nose	Four sheaves mounted on heavy duty tapered roller bearings with removable pin-type rope guards. *Optional removable auxiliary boom nose with removable pin type rope guard.
Boom Elevation	Two double acting hydraulic cylinders with integral holding valve provides elevation from -6° to 76°.
Load Moment & Anti-Two Block System	Standard load moment and anti-two block system with audio-visual warning and control lever lockout to alert operator of impending two-block condition. Electronic display of boom angle, length, radius, tip height, relative load moment, maximum permissible load and actual load indication is provided.
Cab	Full vision, all steel fabricated with accoustical lining and tinted safety glass throughout. Dash panel incorporates gauges for all engine functions. Other standard features include: hinged skylight, sliding left side door and sliding right side window, electric windshield wash-wipe, circulating air fan, heater, swing horn, fire extinguisher, seat belt. *Optional items: electric skylight wiper and air conditioning.(Special Order).
Swing	Ball bearing swing circle with 360° continuous rotation. Grove "glide swing" with foot actuated disc brake, spring applied hydraulically released park brake and 360° positive turntable lock. Combination controls provided for hand or foot operation. Swing speed 2.6 RPM.
Counterweight	Turntable mounted power installed and removed, hydraulically extended to working position and retracted to travel position. Weight varies depending on hoist configuration.

HYDRAULIC SYSTEM

Pumps	Four main gear pumps powered by carrier engine. Manual pump disconnect. Combined capacity 146 GPM (553 LPM).
Valves	Precision four way double acting control valves, 4 individual valve banks permit simultaneous control of multiple crane functions.
Filter	Return line type, full flow with by-pass protection and filter by-pass indicator, replaceable cartridge, 15/30/38 filtration rating.
Reservoir	127 gallons (481 L) with spin-on breather filter, external sight gauge, clean out access, strap mounted to frame.
Oil Cooler	Full flow, fin and tube, oil to air.

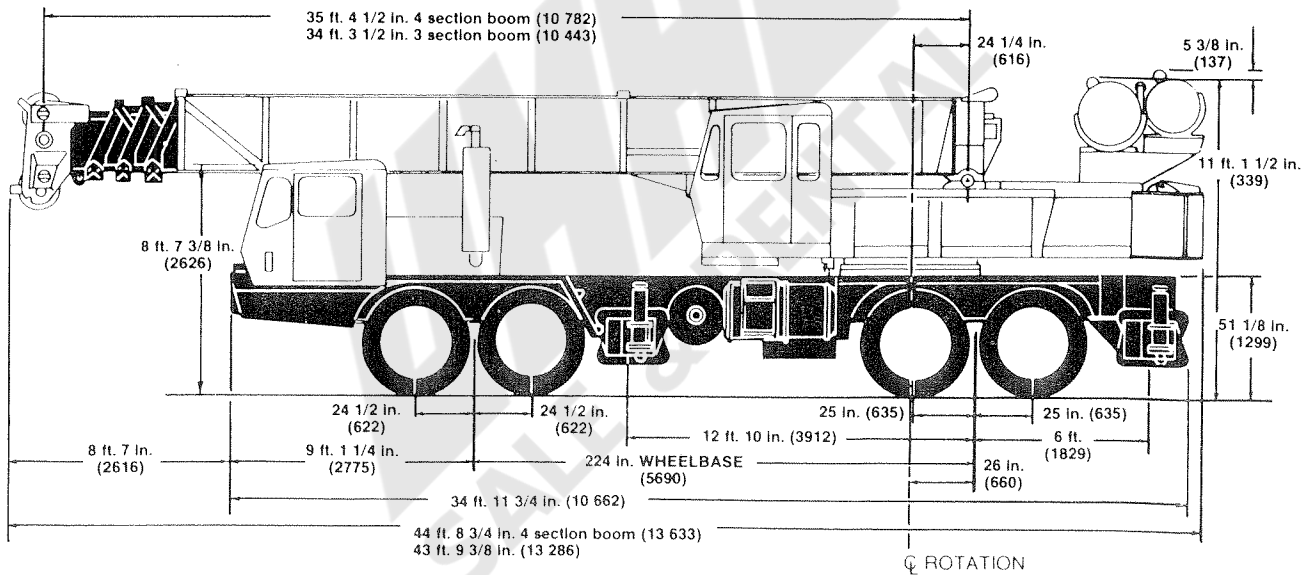
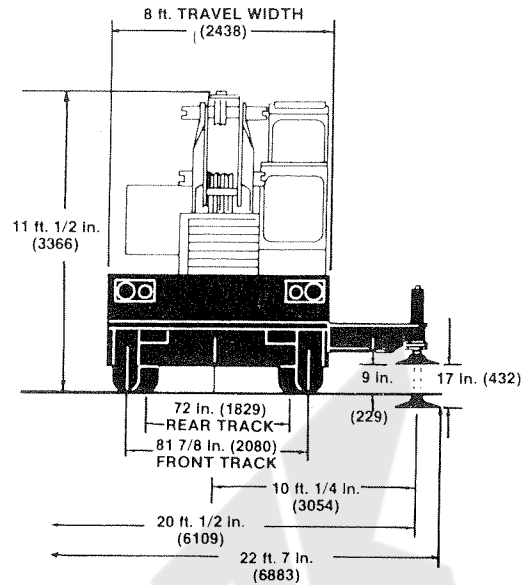
HOIST SPECIFICATIONS

Series parallel circuitry and two motors provide both high line pull and speed ranges. Power up and down, equal speed, planetary reduction with integral automatic brake and electronic hoist drum rotation indicator.

Make/Model		Main Hoist or *Auxiliary Hoist H030B-16(H)	
		High Range	Low Range
Maximum single line speed	Bottom layer	396 FPM (121m/min)	198 FPM (60.5m/min)
	Intermediate layer	460 FPM (140m/min)	230 FPM (70m/min)
	Top layer	526 FPM (160m/min)	263 FPM (80m/min)
Maximum single line pull	Bottom layer	8,161 lbs. (3702 kg)	16,322 lbs. (7404 kg)
	Intermediate layer	7,028 lbs. (3188 kg)	14,056 lbs. (6376 kg)
	Top layer	6,172 lbs. (2799 kg)	12,344 lbs. (5599 kg)
Maximum permissible line pull		12,920 lbs. (5861 kg) w/std. wire rope	
w/5:1 Strength Factor			

Maximum rope stowage	Main/Aux. 508 ft. of 3/4" dia. rope (155m of 19mm)
	Note: 500 ft. (152m of 19mm) supplied with basic unit.

†Patented Grove feature or patent pending.
*Denotes optional equipment.



Distributed By

Constant improvement and engineering progress makes it necessary that we reserve the right to make specification, equipment, and price changes without notice. Illustrations shown may include optional equipment and accessories and may not include all standard equipment.

North and South America, U.S.S.R., Far East, Australasia
GROVE MANUFACTURING COMPANY
 Box 21 ■ Shady Grove ■ Pennsylvania 17256
 (717) 597-8121 ■ telex: 842308 ■ fax: (717) 597-4062

Europe, Africa, Middle East, Indian Sub-continent
GROVE
 Telford Rd. ■ Bicester ■ Oxfordshire OX6 0TZ
 (0869) 246800 ■ telex: 837447 ■ fax: 0869-246965

GROVE®

FULL HYDRAULIC

CARRIER-MOUNTED CRANE

TMS475

50 TON CAP.

PCSA CLASS 10-160

RATED LIFTING CAPACITIES IN POUNDS

34 ft. - 116 ft. BOOM

ON OUTRIGGERS FULLY EXTENDED - OVER SIDE

Radius in Feet	Boom Length in Feet							84 ft. + 32 ft. Ext.
	*34	40	44	54	64	74	84	
10	100,000 (70)	74,000 (73)	72,000 (76)					**116
12	90,000 (66.5)	70,000 (70)	67,500 (73.5)	64,000 (76.5)				
15	72,000 (61)	63,700 (65.5)	61,000 (69)	55,000 (73)	44,700 (76)			
20	53,000 (50.5)	52,200 (57.5)	49,800 (62)	44,000 (67.5)	37,900 (71)	35,000 (74)	31,000 (76.5)	
25	39,800 (38.5)	39,800 (48)	39,800 (54)	36,300 (61.5)	31,900 (66)	29,200 (70)	27,500 (73.5)	17,500 (76.5)
30	27,030 (21.5)	27,030 (37.5)	27,030 (45)	27,030 (55.5)	27,000 (60.5)	25,000 (65.5)	23,900 (69.5)	16,600 (75)
35		20,280 (23)	20,280 (34.5)	20,280 (48.5)	20,280 (55)	20,280 (61)	20,280 (66)	14,500 (72.5)
40			15,950 (19)	15,950 (41)	15,950 (49)	15,950 (56.5)	15,950 (62)	12,800 (70)
45				12,840 (31.5)	12,840 (42)	12,840 (51.5)	12,840 (58)	11,400 (67)
50				10,640 (17.5)	10,640 (35)	10,640 (46)	10,640 (53.5)	10,200 (64.5)
55					8,800 (26)	8,800 (40.5)	8,800 (49)	9,190 (61.5)
60					7,480 (12.5)	7,480 (34)	7,480 (44)	8,440 (59)
65						6,320 (25.5)	6,320 (38.5)	7,670 (56)
70						5,290 (14)	5,290 (32.5)	6,570 (53)
75							4,310 (25)	5,650 (49.5)
80							3,440 (13.5)	4,810 (46)
85								4,120 (42.5)
90								3,500 (39)
95								2,960 (34.5)
100								2,480 (29.5)
105								2,080 (24)
110								1,710 (16)

A6-829-002754 & -002760

NOTE: Boom Angles (degrees) are to be used for reference only appear below the load.

ON OUTRIGGERS FULLY EXTENDED - OVER REAR

Radius in Feet	Boom Length in Feet							84 ft. + 32 ft. Ext.
	*34	40	44	54	64	74	84	
10	100,000 (70)	74,000 (73)	72,000 (76)					**116
12	90,000 (66.5)	70,000 (70)	67,500 (73.5)	64,000 (76.5)				
15	72,000 (61)	63,700 (65.5)	61,000 (69)	55,000 (73)	44,700 (76)			
20	53,000 (50.5)	52,200 (57.5)	49,800 (62)	44,000 (67.5)	37,900 (71)	35,000 (74)	31,000 (76.5)	
25	41,000 (38.5)	41,000 (48)	41,000 (54)	36,300 (61.5)	31,900 (66)	29,200 (70)	27,500 (73.5)	17,500 (76.5)
30	29,690 (21.5)	29,690 (37.5)	29,690 (45)	29,690 (55.5)	27,000 (60.5)	25,000 (65.5)	23,900 (69.5)	16,600 (75)
35		22,650 (23)	22,650 (34.5)	22,650 (48.5)	22,650 (55)	21,800 (61)	20,500 (66)	14,500 (72.5)
40			18,090 (19)	18,090 (41)	18,090 (49)	18,090 (56.5)	17,900 (62)	12,800 (70)
45				14,840 (31.5)	14,840 (42)	14,840 (51.5)	14,840 (58)	11,400 (67)
50				12,330 (17.5)	12,330 (35)	12,330 (46)	12,330 (53.5)	10,200 (64.5)
55					10,440 (26)	10,440 (40.5)	10,440 (49)	9,190 (61.5)
60					9,100 (12.5)	9,100 (34)	9,100 (44)	8,440 (59)
65						7,990 (25.5)	7,990 (38.5)	7,760 (56)
70						6,880 (14)	6,880 (32.5)	7,100 (53)
75							5,770 (25)	6,630 (49.5)
80							4,660 (13.5)	6,130 (46)
85								5,360 (42.5)
90								4,630 (39)
95								3,980 (34.5)
100								3,420 (29.5)
105								2,940 (24)
110								2,560 (16)

A6-829-002748 & -002760

NOTE: Boom Angles (degrees) are to be used for reference only appear below the load.

Capacities appearing above bold line are based on structural strength and tipping should not be relied upon as a capacity limitation.

*Capacities for 34 ft. boom length shall be lifted with boom fully retracted. If boom is not fully retracted, capacities shall not exceed those shown for 40 ft. boom length.

**Boom must be fully extended when lifting with the boom extensions.

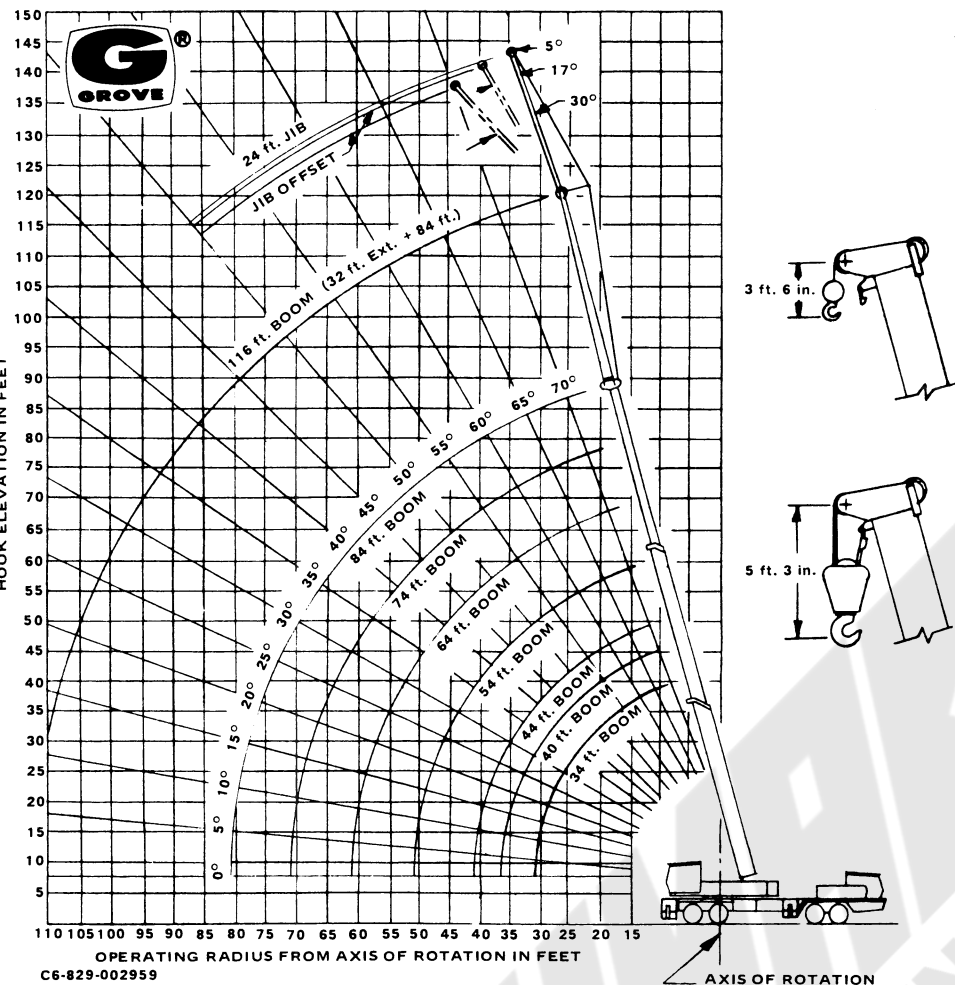
The following deductions from rated main boom capacities must be made if machine is equipped accordingly:

With 32 ft. boom extension in stowed position 290 lbs.

With 32 ft. boom extension in operating position and lifting over main boom 2,350 lbs.

With 32 ft. boom extension and 24 ft. jib in operating positions and lifting with main boom 5,825 lbs.

RANGE DIAGRAM



JIB CAPACITIES IN POUNDS 24 ft. JIB and 32 ft. EXT. Combination

Main Boom Angle	Min. 5° Offset	17° Offset	Max. 30° Offset
76°	6,000	5,200	4,600
70	4,300	3,940	3,650
65	3,430	3,200	3,010
60	2,760	2,600	2,470
55	2,220	2,110	2,020

A6-829-002762

- 24 ft. jib and 32 ft. boom extension combination may be used for single line lifting crane service only. Capacities are based on structural strength of 24 ft. jib and 32 ft. boom extension combination at given main boom angle regardless of main boom length.
- Capacities do not exceed 85% of tipping loads as determined by test in accordance with SAE J-765.
- Lifting over front of machine with 24 ft. jib is strictly prohibited.
- WARNING:** Operation of machine with heavier loads than the capacities listed is strictly prohibited. Machine tipping with jib occurs rapidly and without advance warning.
- Maximum total length of boom including 32 ft. boom extension for purpose of erecting 24 ft. jib below 10° elevation, over rear or side, is 92 ft.
- 24 ft. JIB WARNING:** For total boom length including 32 ft. boom extension greater than 92 ft. with 24 ft. jib in working position the boom angle must not be less than 50° since loss of stability will occur causing a tipping condition.

NOTES TO LIFTING CAPACITIES

- Do not exceed any rated lifting capacity. Rated lifting capacities are based on freely suspended loads with the machine leveled and standing on a firm supporting surface. Ratings with outriggers are based on outriggers being extended to their maximum position and tires raised free of crane weight before extending the boom or lifting loads.
- Practical working loads for each particular job shall be established by the user depending on operating condition to include: the supporting surface, wind and other factors affecting stability, hazardous surroundings, experience of personnel, handling of load, etc. No attempt must be made to move a load horizontally on the ground in any direction.
- Operating radius is the horizontal distance from the axis of rotation before loading to the centerline of the vertical hoist line or tackle with loads applied.
- "On Rubber" lifting (if permitted) depends on proper tire inflation, capacity and condition. "On Rubber" loads may be transported at a maximum vehicle speed of 2.5 mi/hr (4 Km/hr) on a firm and level surface under conditions specified.
- Jibs may be used for lifting crane service only. Jib capacities are based on structural strength of jib or main boom and on main boom angle.
- Operation is not intended or approved for any conditions outside of those shown hereon. Handling of personnel from the boom is not authorized except with equipment furnished and installed by Grove Manufacturing Company.
- For clamshell or concrete bucket operation, weight of bucket and load must not exceed 80% of rated lifting capacities.
- Power-telescoping boom sections must be extended equally at all times. Long cantilever booms can create a tipping condition when in extended and lowered position.
- The maximum load which may be telescoped is limited by hydraulic pressure, boom angle, boom lubrication, etc. It is safe to attempt to telescope any load within the limits of rated lifting capacity chart.
- With certain boom and hoist tackle combinations, maximum capacities may not be obtainable with standard cable lengths.
- With certain boom and load combinations, raising of load with boom lift cylinders may not be possible. Operational safety is not affected by this condition.
- Keep load handling devices a minimum of 12 inches (30 cm) below boom head when lowering or extending boom.
- If actual boom length and/or radius is between values listed, use lifting capacity for the next longer rated length and/or radius.
- All load handling devices and boom attachments are considered part of the load and suitable allowances must be made for their combined weights.
- Operation of this equipment in excess of rating charts or disregard of the instructions is hazardous and voids the warranty and manufacturer's liability.



GROVE MANUFACTURING COI

A DIVISION OF WALTER KIDDE & COM

SHADY GROVE • PENNSYLVAN

MEMBER: POWER CRANE & SHOVEL ASS



OUTRIGGERS — Hydraulic double box 2-stage telescoping beam outriggers, integral welded boxes, removable beams, vertical jack cylinders with integral holding valves and 30½ in. (775mm) diameter steel floats. Beams extend to 20 ft. (6.1m) centerline-to-centerline, retract to 8 ft. (2.4m) overall width. Mechanical spin locks on each vertical jack to secure outriggers at any level. Controls and sight leveling bubble in superstructure cab. Powered by carrier engine.

FRAME — High-strength steel, all-welded construction with triple box type design and integral welded outrigger boxes.

STEERING GEAR — Ross TE-70 cam and lever type with Garrison hydraulic power assist.

CLUTCH — Lipe Rollway 14 in. (356mm), two plate dry disc. Total area: 428 sq. in. (2761cm²).

TRANSMISSION — Fuller Roadranger (RT06613), 13 speeds forward and 3 reverse.

UNIVERSAL JOINTS — Needle bearing type.

AXLES — Front (2) Rockwell FL-931, 81 7/8 in. (2.1m) track, 36,000 lb. (16 330 kg) capacity. Rear (2) Rockwell S5HD, 72 in. (1.8m) track, 46,000 lb. (20 866 kg) capacity with inter-axle differential and dash mounted control. Pusher axle (1) Rockwell air controlled from cab, non drive/steer 18,540 lbs. (8410 kg) capacity.

SUSPENSION — Pusher: Neway air bag.

Front- Reyco 21B spring

Rear - Hendrickson R441 Solid

FUEL TANK — Single 96 gallon (363 liter) capacity mounted on left side of frame.

TIRES — Front: 11:00 x 20, 14 P.R., tube-type Hi-way.

Pusher & Rear: 11:00 x 20, 14 P.R., tube-type ND-M&S.

WHEELS — All wheels, steel spoke 8 in. x 20 in. (203mm x 508mm).

BRAKES — Full air on all 10 wheels. Total lining area: 2072 sq. in. (13,368 cm²) Front: 15 in. x 6 in. (381mm x 152mm) Pusher & Rear: 15 in. x 7 in. (381mm x 178mm).

PARKING BRAKE — Spring set emergency chambers on both rear axles with emergency release kit. (Note: Not on pusher axle).

CAB — Low profile, one man, all-steel, with acoustical treatment, laminated safety glass windshield and windows; windshield washer and electric wiper, door and window locks. Bostrom "T" bar seat belt, dual West Coast mirrors, dome light, dashlight, hot water heater, defroster fan, electric horn, traffic hazard warning switch (four-way flasher), full engine instruments and carrier controls, 3 3/4 lb. (1.7kg) dry type fire extinguisher. (Air conditioning available).

CAB INSTRUMENTATION — Tachometer, engine oil pressure gauge, volt-meter, speedometer, air pressure gauge, electric fuel gauge, engine water temperature gauge, high beam indicator, low air pressure audio-visual warning, ignition-on indicator.

MISCELLANEOUS STANDARD EQUIPMENT — Wheel nut wrench and handle, channel front bumper, two front towing loops, front and rear fenders, ether injection starting aid (less bottle), hook block tie down and mud flaps.

ELECTRICAL SYSTEM — 12-volt lighting, 24-volt starting.

SPEED AND GRADEABILITY

Engine	Speed Ranges @Max. Governed RPM	% of Gradeability @Max. Torque
GM6-71N	2.87 to 51.36 MPH (5 to 82.7 Km/h)	35.75% to 0.58%
*Cummins NTCC-230	2.85 to 51.05 MPH (5 to 82.2 Km/h)	35.81% to 0.59%

NOTE: Performance based on 75,000 lb. (34 020kg) GVW and standard SAE engine rating conditions using standard tires, transmissions and axles. Performance data may vary plus or minus 10% due to variations in engine performance and vehicle weights.

CARRIER ENGINE SPECIFICATIONS

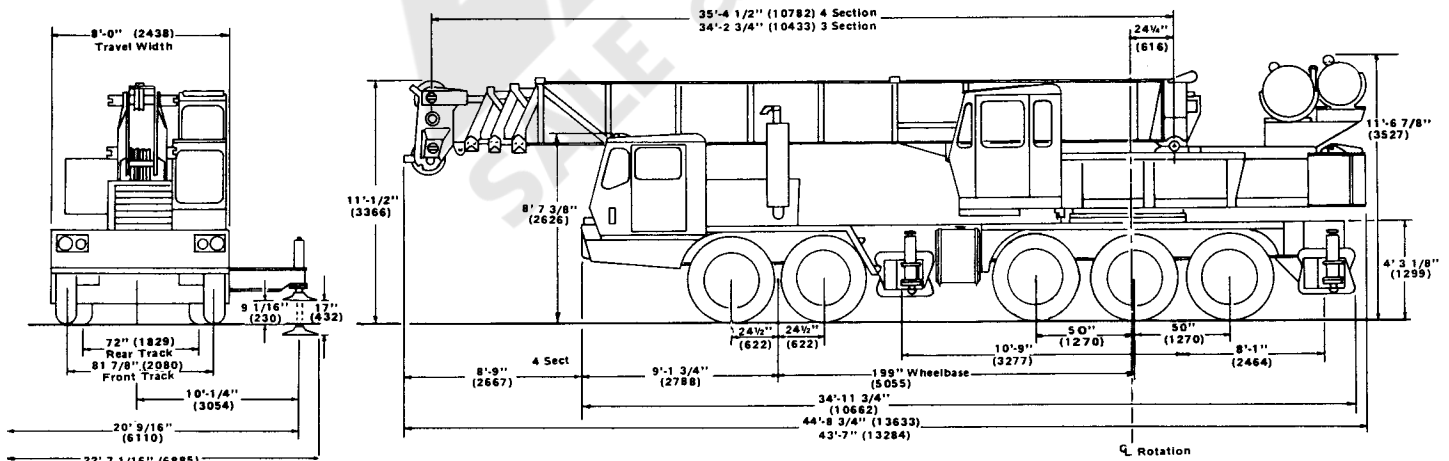
MAKE & MODEL TYPE	GM6-71N 6 Cylinder OHV, Diesel 4.25 in. (108mm)	*Cummins NTCC-230 6 Cylinder OHV, Diesel 5.5 in. (140mm)
BORE	4.25 in. (108mm)	5.5 in. (140mm)
STROKE	5 in. (127mm)	6 in. (152mm)
DISPLACEMENT	426 cu. in. (6982cm ³)	855 cu. in. (14 011 cm ³)
HORSEPOWER (GROSS)	230 @ 2100 RPM	230 @ 2100 RPM
HORSEPOWER (NET FLYWHEEL)	203 @ 2100 RPM	205 @ 2100 RPM
GOVERNED RPM	2100	2100
TORQUE (NET FLYWHEEL)	551 ft. lb. (76.2kg-m) @1600 RPM	588 ft. lb. (81.3kg-m) @1300 RPM
ELECTRICAL SYSTEM	12-volt negative ground	12-volt negative ground
STARTING SYSTEM	24-volt	24-volt
COMBUSTION SYSTEM	2 cycle w/blower	4 cycle, turbo charged
COOLING SYSTEM CAP.	13 gal (49 liter)	13 gal (49 liter)
FUEL TANK CAP.	96 gal (363 liter)	96 gal (363 liter)
ALTERNATOR	90 AMP	90 AMP
BATTERY	(4) 475 CCA @ 0°F	(4) 475 CCA @ 0°F
AIR COMPRESSOR	12 CFM (45.4 liters/min)	13.2 CFM (50.0 liters/min)
AIR CLEANER	1 Stage dry type	1 Stage dry type
+HOURMETER	Std.	Std.

* Denotes optional equipment

• CCA = Cold Cranking Amperage per battery

+ Located inside engine compartment

DIMENSIONS



TAIL SWING 10' (3050) COUNTERWEIGHT RETRACTED
TAIL SWING 12' 1/16" (3659) COUNTERWEIGHT EXTENDED

NOTE: Figures in parentheses () are metric equivalents expressed in millimeters.

AXLE WEIGHT DISTRIBUTION CHART 10 x 4 CARRIER

ITEM	POUNDS				KILOGRAMS			
	GROSS	FRONT	REAR	PUSHER	GROSS	FRONT	REAR	PUSHER
Basic standard machine to include: 34 ft. - 84 ft. (10.4m - 25.6m) trapezoidal boom plus 32 ft. (9.7m) swingaway extension, Grove model 32S-1716B main hoist w/500 ft. (152.4m) of 3/4 in. (19mm) rope, * 7500 lbs. (3402 kg.) counterweight, Grove 10 x 4 carrier, GM6-71N								
1. Pusher Axle inflated to 3 PSI	76,884	29,770	44,754	2,360	34,875	13,504	20,300	1,071
2. Pusher Axle inflated to 50 PSI	76,884	24,831	34,933	17,120	34,875	11,263	15,846	7,766
ADD:								
50 ton (45MT) hookblock (travel position)	+700	+1,134	-434		+317	+514	-197	
Auxiliary boom head (4 Sect.)	+200	+380	-180		+91	+172	-81	
Kruger LMI & anti-2-block	+376	+184	+192		+170	+83	+87	
*Grove 32S-1716B auxiliary hoist w/400 ft. (121.9m) of 3/4 in. (19mm) rope	+2,317	-890	+3,207		+1,051	-404	+1,455	
*Grove 15S-16B auxiliary hoist w/400 ft. (121.9m) of 5/8 in. (16mm) rope	+1,059	-409	+1,468		+480	-186	+666	
*Gearmatic 11 SGEGR auxiliary hoist w/400 ft. (121.9m) of 1/2 in. (13mm) rope	+1,121	-433	+1,554		+509	-196	+705	
24 ft. (7.3m) A-frame jib (stowed)	+895	+761	+134		+406	+345	+61	
SUBSTITUTE:								
4 section 35 ft. - 110 ft. (10.7m - 33.5m) boom w/32 ft. (9.7m) swingaway	+2,458	+2,789	-331		+1,115	+1,265	-150	
Cummins NTCC 230 engine	+620	+620	--		+281	+281	--	
*7000 lbs. (3175 kg) counterweight	-500	+177	-677		-227	+80	-307	
*6100 lbs. (2767 kg) counterweight	-1,400	+497	-1,897		-635	+225	-860	
REMOVE:								
32 ft. (9.7m) swingaway (w/3 section boom)	-1,405	-1,312	-93		-637	-595	-42	
32 ft. (9.7m) swingaway (w/4 section boom)	-1,405	-1,398	-7		-637	-634	-3	
32S-1716B main hoist w/500 ft. (152.4m) of 3/4 in. (19mm) rope	-2,421	+605	-3,026		-1,098	+274	-1,372	
Front outrigger beams & jacks (2)	-3,000	-2,063	-937		-1,361	-936	-425	
Rear outrigger beams & jacks (2)	-3,000	+964	-3,964		-1,361	+437	-1,798	

*NOTE: Appropriate superstructure counterweight substitution must be made depending on hoist configurations selected
 6100 lbs. (2767 kg) 32S-1716B auxiliary hoist
 7000 lbs. (3175 kg) with 15S-16B or Gearmatic 11SGEGR main hoist
 7500 lbs. (3402 kg) without auxiliary hoist



GROVE MANUFACTURING COMPANY

Division of Kidde, Inc.

KIDDE

Box 21, Shady Grove, Pennsylvania 17256

Phone: (717) 597-8121 Telex: 842308 Cable: GROVE MFG

DATE: 2M-881
 Printed in U.S.A.

Distributed by: