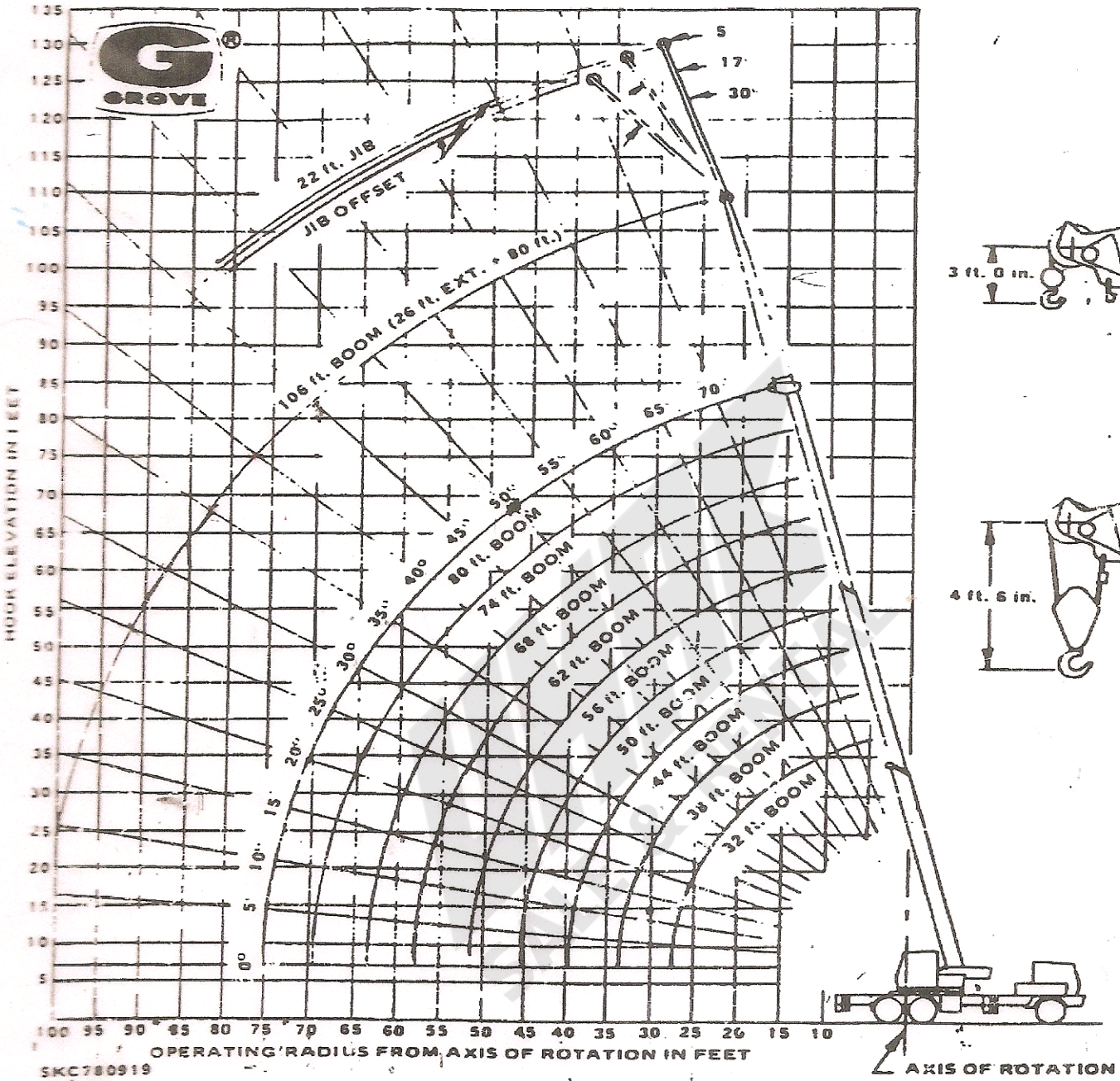


IRAMS

WITH 26 ft. EXT. & 22 ft. JIB



AD HANDLING DEVICES

GROVE[®]

FULL HYDRAULIC CARRIER-MOUNTED CRANE

CITIES IN POUNDS
L. BOOM

ON OUTRIGGERS FULLY EXTENDED - OVER REAR

Radius in Feet	Main Boom Length in Feet								26 ft. Ext. & 30 ft. (2° Offset)	26-46 ft. Tele. Ext. & 60 ft. (2° Offset)			
	*32	38	44	50	56	62	68	74	80	**106	**106	**126	
10	60,000 (64)	52,000 (58)	51,000 (72)										
12	52,500 (60)	52,000 (65)	51,000 (69)	44,900 (72)	40,500 (74.5)								
15	42,000 (53.5)	42,000 (59.5)	42,000 (64.5)	40,200 (68.5)	36,000 (71)	31,000 (72.5)	26,000 (74.5)						
20	30,000 (41.5)	30,000 (50.5)	30,000 (57)	30,000 (62)	30,000 (65.5)	24,500 (67.5)	23,000 (70)	21,500 (72.5)	20,000 (73.5)				
25	22,700 (24.5)	22,700 (39.5)	22,700 (48.5)	22,700 (55)	22,700 (59.5)	20,800 (62.5)	19,750 (65.5)	18,200 (68)	17,700 (69.5)	11,000 (75)	9,370 (75)		
30		17,800 (25)	17,800 (39)	17,800 (47)	17,800 (53)	17,400 (57)	16,650 (60.5)	15,800 (63.5)	14,950 (65.5)	9,550 (73)	8,950 (73)		
35			14,400 (26.5)	14,400 (38.5)	14,400 (46)	14,400 (51)	14,200 (55.5)	13,700 (59)	12,900 (61.5)	8,360 (70)	7,760 (70)	3,250 (74.5)	
40				11,620 (27.5)	11,620 (38)	11,620 (44.5)	11,620 (50)	11,620 (54.5)	11,400 (57)	7,410 (67)	6,810 (67)	3,080 (72.5)	
45					9,490 (28)	9,490 (37.5)	9,490 (44)	9,490 (49)	9,490 (52.5)	6,630 (63.5)	6,030 (64)	2,920 (70)	
50					7,940 (13)	7,940 (29)	7,940 (37.5)	7,940 (43.5)	7,940 (48)	5,980 (60.5)	5,380 (60.5)	2,760 (67.5)	
55						6,720 (16.5)	6,720 (29.5)	6,720 (37.5)	6,720 (42.5)	5,430 (57.5)	4,820 (57.5)	2,600 (65)	
60							5,860 (18.5)	5,860 (30)	5,860 (36.5)	4,960 (54)	4,350 (54)	2,450 (62.5)	
65								4,920 (20.5)	4,920 (30)	4,550 (50.5)	3,940 (50.5)	2,320 (59.5)	
70									4,270 (21)	4,200 (46.5)	3,590 (46.5)	2,200 (57)	
74										3,940 (10.5)	3,330 (43.5)	2,120 (54.5)	
80											3,570 (38)	2,010 (51)	
85												1,920 (48)	
90												1,850 (45)	
95												1,780 (41.5)	
100												1,720 (37.5)	
105												1,670 (33)	
110												1,620 (28)	
115												1,320 (22)	
120												1,060 (12)	
Minimum boom angle (deg.) for indicated boom length (no load)										2	3	4	5
Maximum boom length (ft.) at 0 deg. boom angle (no load)										79	105.5	105.5	125

AG-825-505321 & -002997D
& -005228

NOTE: Boom angles are to be used for reference only.



TMS250B

30 TON CAPACITY
32 ft. - 106 ft. BOOM

(FULL POWER)
PCSA CLASS 10-81
85% OF TIPPING

RATED LIFTING CAPA

32 ft. - 106 ft

ON OUTRIGGERS FULLY EXTENDED - OVER SIDE

Radius in Feet	Main Boom Length - Feet									26 ft. Ext. & 80 ft. (2 Offset)	26.46 ft. Tele. Ext. & 80 ft. (2 Offset)		
	*32	38	44	50	56	62	68	74	80	**106	**106	**126	
10	60,000 (64)	52,000 (68)	51,000 (72)										
12	52,500 (60)	52,000 (65)	51,000 (69)	44,900 (72)	40,500 (74.5)								
15	42,000 (53.5)	42,000 (59.5)	42,000 (64.5)	40,200 (68.5)	36,000 (71)	31,000 (72.5)	26,000 (74.5)						
20	30,000 (41.5)	30,000 (50.5)	30,000 (57)	30,000 (62)	30,000 (65.5)	30,000 (67.5)	24,500 (70)	23,000 (72.5)	21,500 (73.5)	20,000 (75)	11,000 (75)	9,370 (75)	
25	20,480 (24.5)	20,480 (39.5)	20,480 (48.5)	20,480 (55)	20,480 (59.5)	20,480 (62.5)	19,750 (65.5)	18,200 (68)	17,700 (69.5)	17,000 (73)	9,550 (73)	8,950 (73)	
30		14,070 (25)	14,070 (39)	14,070 (47)	14,070 (53)	14,070 (57)	14,070 (60.5)	14,070 (63.5)	14,070 (65.5)	14,070 (73)	8,360 (70)	7,760 (70)	
35			10,240 (26.5)	10,240 (38.5)	10,240 (46)	10,240 (51)	10,240 (55.5)	10,240 (59)	10,240 (61.5)	10,240 (73)	8,360 (70)	7,760 (70)	
40				8,100 (27.5)	8,100 (38)	8,100 (44.5)	8,100 (50)	8,100 (54.5)	8,100 (57)	8,100 (73)	7,410 (67)	6,810 (67)	
45				6,420 (6.5)	6,420 (28)	6,420 (37.5)	6,420 (44)	6,420 (49)	6,420 (52.5)	6,420 (73)	6,630 (63.5)	6,030 (64)	
50					4,970 (13)	4,970 (29)	4,970 (37.5)	4,970 (43.5)	4,970 (48)	4,970 (73)	5,980 (60.5)	5,380 (60.5)	
55						3,810 (16.5)	3,810 (29.5)	3,810 (37.5)	3,810 (42.5)	3,810 (73)	4,780 (57.5)	4,780 (57.5)	
60							2,980 (18.5)	2,980 (30)	2,980 (36.5)	2,980 (73)	4,040 (54)	3,670 (54)	
65								2,250 (20.5)	2,250 (30)	2,250 (73)	3,240 (50.5)	2,840 (50.5)	
70									1,750 (21)	1,750 (73)	2,580 (46.5)	2,070 (46.5)	
74										1,500 (10.5)	2,120 (43.5)	1,620 (43.5)	
80											1,580 (38)	1,070 (38)	
85												1,170 (33.5)	
90													
Minimum boom angle (deg.) for indicated boom length (no load)										0	5	35	40
Maximum boom length (ft.) at 0 deg. boom angle (no load)										80	105	86	96

A6-829-005323 & -002997D
& -005327

NOTE: Boom angles are to be used for reference only.

NOTES:
 Capacities appearing above bold line are based on structural strength and tipping should not be relied upon as a capacity limitation. Capacities do not exceed 85% of tipping loads as determined by test in accordance with SAE J-765.
 *Capacities for 32 ft. boom length shall be lifted with boom fully retracted. If the boom is not fully retracted, capacities shall not exceed those shown for the 38 ft. boom length.
 **For boom lengths less than fully extended while boom extension is erected, the rated loads are determined by boom angle:
 a. For 26 ft. boom ext., use only the column headed by 106 ft. boom.
 b. For 26 ft. boom ext. and 22 ft. jib combination, see note No. 1 on jib capacity chart A6-829-003726.
 c. For 26 ft. - 46 ft. telescopic boom ext. (retracted), use only the column headed by 106 ft. boom.
 d. For 26 ft. - 46 ft. telescopic boom ext. (extended), use only the column headed by 126 ft. boom.
 For boom angles not shown, use rating of next lower boom angle.
 Boom angle is the included angle between horizontal and the longitudinal axis of the boom base section after lifting rated load.