

GROVE®

FULL HYDRAULIC
CARRIER-MOUNTED CRANE

TM275LP

(LOW PROFILE)
30-TON CAP.
PCSA CLASS 12-120
(with 32'-80' or 29'-92' boom)

MASTER COPY



GROVE FEATURES ON THE TM275 LOW PROFILE

- * Low Profile Allows Overall Height to 10'
- * Hoist Speeds to 360 F.P.M.
Single Line Pull to 11,700 lbs.
- * Highest Hook Heights - Longer Boom and Jibs
80' Full Power Telescoping Boom Standard
92' Boom Optional - Up to 40' Jibs
- * Grove Trailing Boom Feature
- * 360° Continuous Rotation Ball Bearing Swing Circle "Planetary Glide Swing"
- * Twin Boom Elevation Cylinders
- * Negative Boom Elevation
(-6° to 75°) Boom Elevation
- * Exclusive Long Vertical Stroke
Grove Removable Double Box Outriggers
Hydraulic Controls from Operator's Position



GROVE MANUFACTURING COMPANY

A DIVISION OF WALTER KIDDE & COMPANY, INC.
SHADY GROVE • PENNSYLVANIA 17256
MEMBER: POWER CRANE & SHOVEL ASSOCIATION

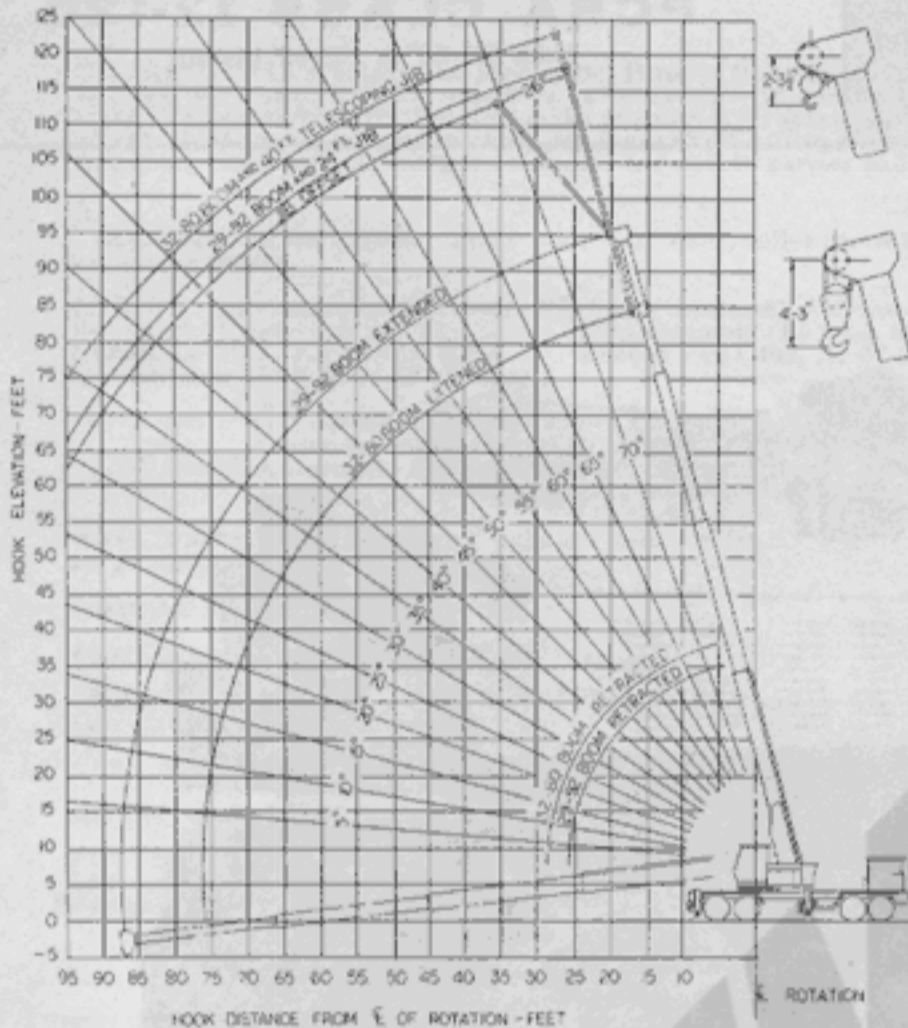
FORM 442670 7.5M

Printed in U.S.A.

Distributed by:



**RANGE DIAGRAM
32' - 80' & 29' - 92' BOOMS**



**RATED LIFTING CAPACITIES, 32' - 80' BOOM
OVER SIDE AND REAR
OUTRIGGERS FULLY EXTENDED**

RADIUS IN FEET	BOOM LENGTH IN FEET								
	32	38	44	50	56	62	68	74	80
12	60,000	50,000	45,500	42,500	40,000				
15	46,500	42,000	40,000	37,000	34,500	28,000	26,000		
20	34,000	32,500	31,000	29,500	28,000	25,500	23,000	21,000	20,000
25	26,500	26,000	25,500	25,000	24,000	23,000	21,500	20,750	18,000
30		19,200	18,600	18,000	17,750	17,750	17,500	17,000	17,000
35			14,750	14,750	14,500	14,500	14,500	14,000	14,000
40			12,000	12,000	12,000	12,000	12,000	12,000	12,000
50					7,850	7,850	7,850	7,850	7,850
60							5,500	5,500	5,500
70								3,800	3,800
75									3,210

Capacities appearing above the bold line are based upon structural strength when lifting over the side. All capacities over the rear are based on structural strength and machine stability should not be relied upon as the capacity limitation.

A6-829-000478

29' - 92' BOOM CAPACITIES

AVAILABLE UPON REQUEST

**JIB CAPACITIES
32' - 80' BOOM**

24' JIB

24' - 40' JIB

MIN. BOOM ANGLE	NO OFFSET	26° OFFSET	Min. Boom Angle	24' No Offset	24' 26° Offset	40' No Offset
75°	6400	3100	75	6000	2700	3200
70	5150	2850	70	4750	2550	2700
65	4350	2650	65	4000	2375	2050
60	3700	2450	60	3500	2300	1750
55	3300	2275	55	3150	2200	1400
50	2950	2170	50	2900	2170	1000
45	2650	2125	45	2650	2125	
40	2550	2085	40	2550	2085	
35	2475	2040	35	2475	2040	
30	2400	2000	30	2400	2000	
26	2300	1950	26	2300	1950	

NOTES:

- Rated lifting capacities, with fully extended outriggers, are the maximum loads covered by the manufacturer's warranty with the machine standing on a firm, level and uniform supporting surface. Capacities do not exceed 85% of tipping load. Do not exceed rated lifting capacities.
- For clamshell or concrete bucket operation, weight of bucket and load must not exceed 90% of rated lifting capacities.
- Jibs may be used for single line lifting crane service only. Jib capacities are based on structural strength of jib or main boom. Actual loads lifted must not exceed net lifting capacities for the actual operating radius.
- Long cantilever booms can create a tipping condition when in extended and lowered position.
- Each power telescoping boom section should be extended equally at all times and boom length should not exceed any length restrictions shown on rated lifting capacity chart.
- The maximum load which may be telescoped is limited by hydraulic pressure, boom angle, boom lubrication, etc. It is safe to attempt to telescope any load within the limits of the rated lifting capacity chart.
- Single line capacity 8,700 lbs. (Maximum). For multiple part reeving, use one part of line for each 7,500 lbs. of load to be lifted.

20' JIB

Min. Boom Angle	No Offset	Max. 25° Offset
75	9000	5200
70	6750	4450
65	5275	3450
60	4300	2775
55	3600	2325
50	3125	1975
45	2725	1725
40	2450	1525
35	2225	1375
30	2050	1275
25	1900	1175



SUPERSTRUCTURE SPECIFICATIONS

TM275LP

30 TON CAPACITY FULL HYDRAULIC, CARRIER MOUNTED

BOOM - Three Section Full Power Telescope, STANDARD - 32' Retracted - 80' Extended.
*Four Section Power Telescope with manually actuated power-extended fourth section, OPTIONAL - 29' Retracted - 92' Extended.
Integral Safety Holding valves on each Telescoping Cylinder.

BOOM HEAD - Four Sheave.

JIB EXTENSIONS - 20' "Stowaway" Jib with self-equalizing suspension, maximum offset 26°.
24' "Stowaway" type with self-equalizing suspension, maximum offset 26°.
24' - 40' Manual Telescoping Jib (not stowable)

BOOM ELEVATION - Twin double-acting hydraulic cylinders with integral safety holding valves. -6° to 75° boom elevation. Full power up and down. Combination control lever provided for hand or foot operation.

HOIST - (Main) Model 5090 MEGR - Power up and down, equal speed, planetary reduction with integral automatic brake.
DRUM - 14.5" diameter, 16" long, 22.3" diameter flange.
CABLE - 690' of 5/8" diameter cable. (6 x 37 class, IPS, IWRC recommended for multipart rigging, permissible line pull 9,700 lbs; 18 x 7 class, IPS, fiber core, non spinning, recommended for single part service, permissible line pull 8,700 lbs.)
SINGLE LINE PULL - 11,700 lbs. maximum 9,700 lbs. permissible (or less, limited by cable strength)
SINGLE LINE SPEED - to 360 FPM maximum 210 FPM (full load) on bare drum

***HOIST** - (Main) Model 5090 MGEGR. Specifications and performance same as 5090 MEGR hoist with Free Fall feature.

***HOIST** - (Auxiliary) (less cable) Model 40 SECR full hydraulic power up and down. Planetary gear reduction with automatic brake.

DRUM - 9" diameter, 8" long, 17 1/2" diameter flange.
CABLE - 400' of 1/2" cable.
SINGLE LINE PULL - 9,000 lbs. maximum 7,200 lbs. permissible (or less, limited by cable strength)
SINGLE LINE SPEED - to 290 FPM maximum 125 FPM (full load) on bare drum

***HOIST** - (Auxiliary) Model 40 SCR. High speed power down; line speed down - 1,000 FPM maximum.

***HOIST** - (Auxiliary) (less cable) Model 40 SGEGR (Free Fall)

ENGINE SPECIFICATIONS -

MAKE
TYPE
BORE AND STROKE
MAXIMUM BHP
MAXIMUM TORQUE
GOVERNED RPM
ELECTRICAL SYSTEM
COMBUSTION SYSTEM
COOLING SYSTEM

GAS

Ford 361
8 Cylinder O.H.V.
4.05" x 3.50"
168 @ 2800 RPM
330 lbs. ft. @ 2000 RPM
2800 RPM
12 Volt
4 cycle
water cooled

*GAS

Ford 391
V-8 Cylinder O.H.V.
4.05" x 3.79"
193 @ 2800 RPM
372 lbs. ft. @ 2000 RPM
2800 RPM
12 Volt
4 cycle
water cooled

*DIESEL

GM4-53N
4 Cylinder O.H.V.
3.875" x 4.50"
140 @ 2800 RPM
295 lbs. ft. @ 1500 RPM
2800 RPM
12 Volt HD Battery
2 cycle
water cooled

*DIESEL

Cummins V352-C130 (HT)
V-6 Cylinder
4.625" x 3.50"
135 @ 3000 RPM
264 lbs. ft. @ 1800 RPM
3000 RPM
12 Volt
4 cycle
water cooled

SWING - Ball Bearing Swing Circle, 360° continuous rotation, Grove "Planetary Glide Swing", foot operated Swing Brake and hand operated House Brake - Combination control lever for hand or foot operation. Swing Speed - 3 RPM.

HYDRAULIC SYSTEM -

PUMP - Multiple-section gear type driven from superstructure engine. 130 GPM capacity.

HYDRAULIC POWER DISTRIBUTION - (Main Hoist - Auxiliary Hoist - 2250 PSI) (Lift Boost - Fly Telescope - Outriggers - Swing - 2250 PSI) (Hoist Boost - Lift - Accessory - Mid-Telescope - 2250 PSI).

CONTROL VALVES - Four-way double-acting type with integral load check, main and circuit relief valves, three banks permitting multiple control of crane functions.

RESERVOIR - 133 gallon, all steel welded construction with integral baffles and top clean-out hole.

FILTER - Return line type; full flow with by-pass protection; replaceable cartridge.

OIL COOLER - Oil to air.

CAB - All steel, fully enclosed, removable front and rear laminated safety glass windows. Optional at no charge, hinged skylight, for additional ventilation. Full length control levers with combination hand and foot control for swing and boom elevation; fully adjustable operator's seat, full engine instruments, heater, windshield wiper.

COUNTERWEIGHT - Turntable mounted; Removable.

OUTRIGGER CONTROL - Remote operation from superstructure cab; each outrigger independently controlled; in-out-up-down.

FUEL CAPACITY - 52 Gallons.

AXLE WEIGHT DISTRIBUTION CHART
Standard Machine - 32' - 80' Boom
Standard Counterweight

CARRIERS	GROSS	FRONT	REAR
30 GF	64,945 lbs.	21,228 lbs.	43,717 lbs.
30 GC	64,148 lbs.	20,148 lbs.	44,000 lbs.
30 GH	63,894 lbs.	21,237 lbs.	42,657 lbs.
Remove Front Outrigger	- 3,500 lbs.	- 1,898 lbs.	- 1,602 lbs.
Remove Rear Outriggers	- 3,500 lbs.	+ 969 lbs.	- 4,469 lbs.
Add Model 11 SECR Hoist	+ 550 lbs.	- 120 lbs.	+ 670 lbs.
Add 400' of 1/2" Cable Auxiliary Hoist	+ 172 lbs.	- 38 lbs.	+ 210 lbs.
Add 30 Ton Hook Block	+ 700 lbs.	+1,004 lbs.	- 304 lbs.
Substitute 29' - 92' Boom	+ 800 lbs.	+ 515 lbs.	+ 285 lbs.
Substitute GM4-53N (Superstructure)	+ 800 lbs.	- 20 lbs.	+ 820 lbs.
Substitute GM6-71N (Carrier)	+1,135 lbs.	+1,320 lbs.	- 185 lbs.

GROVE SPECIAL TRAILING BOOM FEATURE

*Trailing Boom Concept available as an Optional Extra, Provides Sliding Blocks on Lift Cylinders allowing the boom free movement vertically, as it is trailed on a Dolly, for highway travel.

*DENOTES OPTIONAL EQUIPMENT

CONSTANT IMPROVEMENT AND ENGINEERING PROGRESS MAKES IT NECESSARY THAT WE RESERVE THE RIGHT TO MAKE SPECIFICATION, EQUIPMENT AND PRICE CHANGES WITHOUT NOTICE.



CARRIER SPECIFICATIONS MODELS 8 x 4

TM275LP

30GF — 30GC — 30GH

WHEELBASE - 224"

OVERALL WIDTH - 96"

AXLES -

Front — Tandem 24,000 lbs. Capacity

Rear — Tandem 44,000 lbs. Capacity

FRAME - Lightweight, High Strength Steel, All welded construction. Depth - 18"

OUTRIGGERS - Removable, Hydraulic, Double Box type, integral with carrier frame; Beams extend to 16' centerline to centerline retract to 8' overall width; Vertical jacks with integral safety holding valves; steel covers and mechanical pin locks; Full hydraulic power, in-out-up-and-down; Outrigger controls - located in carrier cab.

STEERING GEAR - Ross TE71 cam and lever, roller mounted with hydraulic power.

ENGINE - International Harvester RD 501 (Gasoline), 6-Cylinder. Bore and Stroke - 4.5 x 5.25 Displacement - 501 cu. in. Horsepower - 214.8 @3000 RPM Torque - 451 lbs. ft. @1600 RPM Governed at 2600 RPM (Full Load).

***ENGINE -** GM diesel Model 6-71N — (All Carriers)
Cummins diesel Model NH230 — (All Carriers)
Automatic Radiator Shutters — (All Diesel Engines)

FUEL CAPACITY - 60 gallons — 30 GC and 30 GF
50 gallons — 30 GH

RADIATOR - Fin and Tube type.

CLUTCH - 14" single plate, dry disc type.

TRANSMISSION - (Main) 5 CW65, 5 Speeds Forward and 1 Reverse.
(Auxiliary) 3 K65, 3 Speed - 30 GC
3 H92, 3 Speed - 30 GF
3 A65, 3 Speed - 30 GH

UNIVERSAL JOINTS - Needle bearing type.

PERFORMANCE DATA - Using standard tires, transmission, axles and standard gasoline engine governed at 2600 RPM.
*For performance data on optional engines, consult factory.

SUSPENSIONS -

Front — Spring Loaded, Tandem Walking Beams.

Rear — Tandem Axle, Solid Mount Suspension.

BRAKES - Service - Full air on six wheels with 12 CFM piston compressor. Parking - Maxi spring chambers on one rear axle with cab control valve and release kit.

WHEELS - 20" Cast spoke, 7.5" Rim - 30 GC and 30 GH
20" 10 Hole steel disc, 7.5" Rim - 30 GF

TIRES -

Front - (4) 11.00 x 20 - 12 ply highway tread,
Rear - (8) 11.00 x 20 - 12 ply non directional mud and snow.

CAB - All steel, one-man-beside-the-engine style. Safety glass windshield and windows, ventilators, two rear view mirrors, bostrom seat, full engine instruments, speedometer, low air pressure warning and air gage, heater and defroster.

ELECTRICAL SYSTEM - 12 volt lighting and starting, 1 - 12 V, 90 AH battery, 37 Amp alternator, instrument panel light, windshield wiper, horn and traffic hazard warning switch. Federal safety standard lights and reflectors - 30 GC and 30 GF.

160 AH battery, 42 Amp alternator - 30 GH

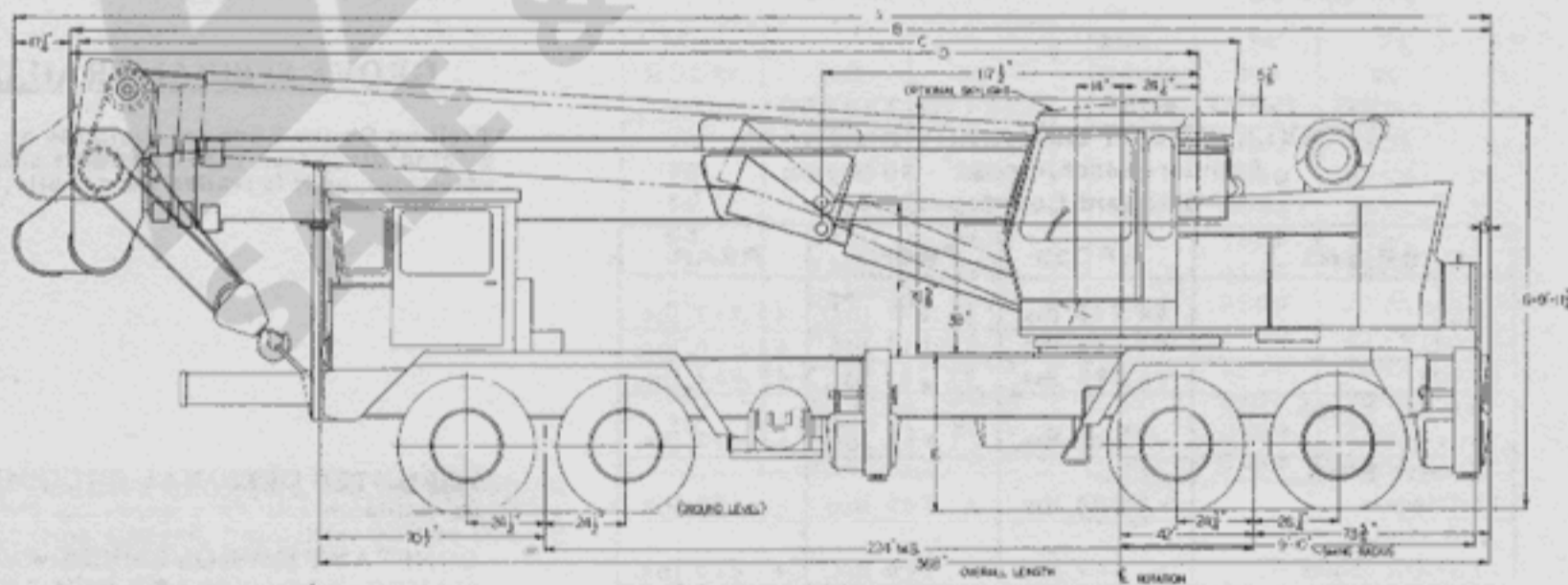
MISCELLANEOUS EQUIPMENT - Wheel nut wrench, channel type front bumper, two front towing loops, and rear fenders.

CARRIER PERFORMANCE for 30GF and 30GH		
Using standard tires, transmission, axles and standard gasoline engine.		
CONDITION@ FULL LOAD	SPEED RANGES	% OF GRADEABILITY
On Highway *	6.4 to 51.8 MPH	14.7 to 0.5%
Off Highway †	2.4 to 19.6 MPH	41.3 to 3.8%

CARRIER PERFORMANCE FOR 30GC		
Using standard tires, transmission, axles and standard gasoline engine.		
CONDITION@ FULL LOAD	SPEED RANGES	% OF GRADEABILITY
On Highway *	7.0 to 56.4 MPH	10.9 to .6%
Off Highway †	2.5 to 20.2 MPH	31.8 to 3.1%

*Auxiliary Transmission in High Range
†Auxiliary Transmission in Low Range

DIMENSIONAL CHART



CARRIER DOOR	C.C.C. (CSTO)				
A	38'-8"	47'-0"			
B	37'-2"	38'-7"			
C	39'-4"	50'-4"			
D	39'-7"	51'-11"			
E	4'-0"	4'-0"			
F	2'-10"	5'-10"			
G	4'-11"	14'-1"			

NOTE: BOOM ELEVATED TO HIGH REST 11'-7 1/4"

GROVE MANUFACTURING COMPANY

A Division of Walter Kidde & Co., Inc.

MEMBER, POWER CRANE AND SHOVEL ASSOCIATION

SHADY GROVE

PENNSYLVANIA

GROVE[®]

FULL HYDRAULIC
CARRIER-MOUNTED CRANE

MODEL
TM275LP
30-Ton Capacity

FEATURES

- * Lift capacity: 60,000 lbs. at 12 ft. radius.
- * 141 ft. Maximum tip height.
- * Low profile design — overall height, under 10 ft. 3 in.
- * Ball bearing swing circle — 360° rotation with Grove "Planetary Glide Swing".
- * Hoist: Standard — power up and down with automatic brake. Single line pull — 11,700 lbs.
Optional — Controlled free-fall hoist with oil-cooled multi-disc brake.
- * Boom elevation — from -6° to +75° with twin, double-acting cylinders.
- * Integral holding valves on all load carrying cylinders.



SUPERSTRUCTURE SPECIFICATIONS

TM275LP

BOOMS – 32 ft. - 80 ft., 3 section, full power telescoping boom.
 *29 ft. - 92 ft., 4 section, power telescoping boom. Two full power sections, fly section power extended and retracted from pinned position.

*32 ft. - 101 ft., 4 section, power telescoping boom. Two full power sections, fly section power extended and retracted from pinned position.
 Integral holding valves on each telescope cylinder.

BOOM NOSE – Fixed boom nose with integral rope guards. Four sheaves mounted on anti-friction bearings. Rope dead ends on each side of boom nose.

***JIBS** – 20 ft. "Stowaway" for 32 ft. - 80 ft. or 29 ft. - 92 ft. 24 ft. "Stowaway" for all booms
 24 ft. - 40 ft. telescoping jib (Not stowable)
 All jibs have self equalizing suspension and jib backstops.

BOOM ELEVATION – Dual double-acting hydraulic cylinders with integral holding valves. -6° to 75° boom elevation. Full power up and down. Combination control lever provided for hand or foot operation.

SWING – Bearing swing circle, 360° continuous rotation, "Grove Planetary Glide Swing" with foot actuated disc swing brake and hand operated turntable brake. Combination control lever provided for hand or foot operation. Swing speed 3 RPM.

HYDRAULIC PUMP – Four section gear driven from superstructure. Combined capacity 142 GPM.

HYDRAULIC POWER DISTRIBUTION – (Main hoist, auxiliary hoist - 2250 PSI) (Swing - 2250 PSI) (Outriggers, fly telescope, lift boost - 2250 PSI) (Lift, hoist boost, mid-telescope accessory - 2250 PSI)

CONTROL VALVES – Precision four-way double-acting with integral load check, main and circuit relief valves. Four individual valve banks permit simultaneous independent control of four crane functions.

RESERVOIR – 146 gallon, all steel welded construction with integral baffles and top clean-out access.

FILTER – Return line type; full flow with by-pass protection; replaceable cartridge.

OIL COOLER – Full flow, oil to air, fin and tube.

CAB – All steel, fully enclosed, removable front and sliding rear laminated safety glass window. Optional at no charge, hinged skylight for additional ventilation. Full length control levers with combination hand and foot control for swing and boom elevation; fully adjustable operator's seat, full engine instruments, heater, windshield wiper, fire extinguisher, and door locks.

COUNTERWEIGHT – Turntable mounted; removable.

OUTRIGGER CONTROL – Independently controlled jacks and beams, in, out, up and down from superstructure cab. Sequence control arrangement eliminates accidental actuation.

HOIST SPECIFICATIONS

DESCRIPTION: Power up and down, equal speed, planetary reduction, with integral automatic brake.

HOIST DATA	MAIN HOIST	*MAIN HOIST (Free Fall)	*AUXILIARY HOIST	*AUXILIARY HOIST (Free Fall)
Drum Dimensions	Model 5090 MECR 14.5 in. diameter 16 in. length 22.3 in. diameter flange	Model 5090 MGECR 14.5 in. diameter 16 in. length 22.3 in. diameter flange	Model 40 SECR 9 in. diameter 8 in. length 17.5 in. diameter flange	Model 40 SGEGR 9 in. diameter 8 in. length 17.5 in. diameter flange
Performance	Single line speed 360 FPM (Max.) Single line pull 11,700 lbs. (Max.)	Same as 5090 MEGR with Free Fall	Single line speed 290 FPM (Max.) Single line pull 9,000 lbs. (Max.)	Same as 40 SECR with Free Fall
Rope Capacity	690 ft. of 5/8 in. rope	690 ft. of 5/8 in. rope	400 ft. of 1/2 in. rope	400 ft. of 1/2 in. rope
Permissible Single Line Rope Pull	5/8 in. 6x37 - 9,700 lbs. 5/8 in. 19x7 - 8,700 lbs.	5/8 in. 6x37 - 9,700 lbs. 5/8 in. 19x7 - 8,700 lbs.	1/2 in. 6x37 - 7,200 lbs. 1/2 in. 19x7 - 6,150 lbs.	1/2 in. 6x37 - 7,200 lbs. 1/2 in. 19x7 - 6,150 lbs.

ENGINE SPECIFICATIONS

	GAS	*DIESEL	*DIESEL
MAKE	Ford 391	GM4-53N	Cummins V 378-C140
TYPE	V-8 Cylinder O.H.V.	4 Cylinder O.H.V.	V-6 Cylinder
BORE & STROKE	4.05" x 3.79"	3.875" x 4.50"	4.625" x 3.75"
NET HORSEPOWER	171 @ 2800 RPM	114 @ 2800 RPM	106 @ 2800 RPM
NET TORQUE	346 lbs. ft. @ 2100 RPM	260 lbs. ft. @ 1800 RPM	119 lbs. ft. @ 1800 RPM
GOVERNED RPM	2800 RPM	2800 RPM	2800 RPM
ELECTRICAL SYSTEM	12 Volt	12 Volt 55 AMP Alternator	12 Volt 55 AMP Alternator
COMBUSTION SYSTEM	4 cycle	2 cycle	4 cycle
COOLING SYSTEM	water cooled	water cooled	water cooled
FUEL CAPACITY	57 gallons	57 gallons	57 gallons

AXLE WEIGHT DISTRIBUTION CHART

CARRIER	BOOM	GROSS	FRONT	REAR
30 GH	32 ft. - 80 ft.	63,894 lbs.	21,237 lbs.	42,657 lbs.
30 GH	29 ft. - 92 ft.	62,194	22,500	39,694
30 GH	32 ft. - 101 ft.	66,197	24,909	41,280
30 GC	32 ft. - 80 ft.	64,148	20,148	44,000
30 GC	29 ft. - 92 ft.	62,448	20,886	41,562
30 GC	32 ft. - 101 ft.	66,451	23,820	42,631

CARRIER PERFORMANCE – GH

CONDITION @ FULL LOAD	SPEED RANGE	% OF GRADEABILITY @ MAX. TORQUE
STANDARD ENGINE, TIRES, TRANSMISSION, AXLES		
On Highway †	6.4 to 50 MPH	14.7 to 0.5%
Off Highway ††	2.4 to 19.6 MPH	41.3 to 3.8%
GM6-71N HEAVY DUTY TRANSMISSION		
On Highway †	7.3 to 48.95 MPH	16.99 to 0.80%
Off Highway ††	2.09 to 14.19 MPH	48.13 to 5.39%

†Auxiliary transmission in high range
 ††Auxiliary transmission in low range

CARRIER PERFORMANCE – GC

CONDITION @ FULL LOAD	SPEED RANGE	% OF GRADEABILITY @ MAX. TORQUE
STANDARD ENGINE, TIRES, TRANSMISSION, AXLES		
On Highway†	7.0 to 50 MPH	10.9 to -0.6%
Off Highway††	2.5 to 20.2 MPH	31.8 to 3.1%
GM6-71N HEAVY DUTY TRANSMISSION		
On Highway†	8.3 to 48.6 MPH	10.1 to 0.0%
Off Highway††	2.3 to 15.5 MPH	37.7 to 5.0%

*DENOTES OPTIONAL EQUIPMENT

CONSTANT IMPROVEMENT AND ENGINEERING PROGRESS MAKES IT NECESSARY THAT WE RESERVE THE RIGHT TO MAKE SPECIFICATION, EQUIPMENT AND PRICE CHANGES WITHOUT NOTICE.

CARRIER SPECIFICATIONS MODELS 8 x 4

30 GC — 30 GH

OVERALL WIDTH — 8 ft. (2.44m)

WHEELBASE — 224 in. (5.69m)

OUTRIGGERS — Removable, hydraulic, double box outriggers. Beams extend to 16 ft. centerline to centerline retract to 8 ft. overall width; Vertical jacks with integral holding valves, steel covers and mechanical pin locks; Full hydraulic power in-out-up-down; Outrigger controls located in carrier cab.

FRAME — Lightweight high strength steel. All welded construction. Depth - 18 in.

STEERING GEAR — Ross TE71 cam and lever, roller mounted with hydraulic power assist.

CLUTCH — 14 in. single plate, dry disc type.

TRANSMISSION — (Main) 5CW65, 5 speeds forward and 1 reverse.
(Auxiliary) 3K65, 3 speed - 30 GC
3A65, 3 speed - 30 GH

UNIVERSAL JOINTS — Needle bearing type.

AXLES — Front: Tandem 32,000 lbs. Capacity
Rear: Tandem 44,000 lbs. Capacity

SUSPENSIONS — Front: Spring loaded, tandem walking beams.
Rear: Tandem axle, solid mount suspension.

OVERALL CARRIER LENGTH — 30 GC 30' - 8"
30 GH 30' - ½"

GROUND CLEARANCE — 11"

MINIMUM TURNING RADIUS — GC 47' - 5½"
GH 48' - 2"

TIRES — Front : (4) 11.00x20 - 14 ply highway
Rear : (8) 11.00x20 - 12 ply N.D.M. & S.

WHEELS — 20 in. Cast Spoke 8 in. Rim.

BRAKES — Service - Full air on six wheels with 12 CFM piston compressor.

PARKING BRAKES — Spring-set emergency chambers on one rear axle with emergency release kit.

ELECTRICAL SYSTEM — 12 volt lighting and starting. One 12V, 90 AMP battery, 37 AMP alternator. Federal safety standard lights and reflectors 30 GC (160 AMP battery, 42 AMP alternator - 30 GH)

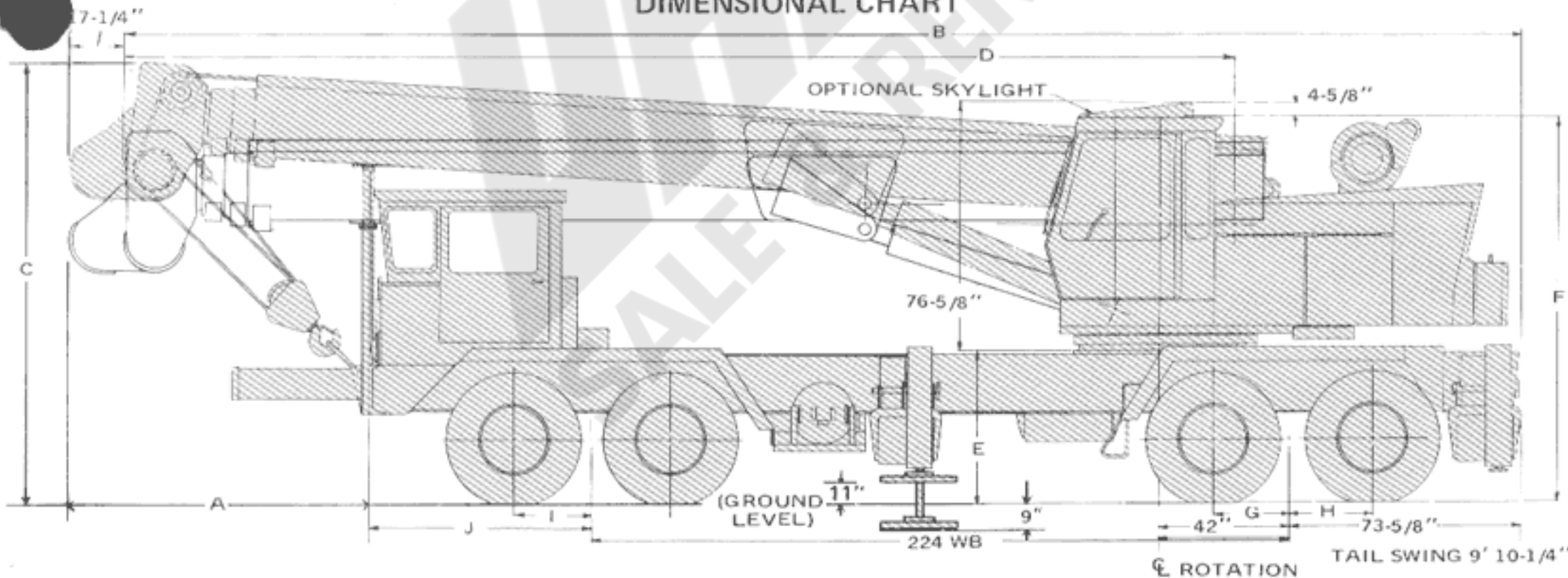
CAB — One man, safety glass windshield and windows, door and window locks, windshield washer and wiper, fire extinguisher, Bostrum "T" bar seat, seat belt, dual rear view mirrors, heater, defroster, engine instruments and carrier controls.

MISCELLANEOUS EQUIPMENT — Wheel nut wrench, channel type front bumper, two front towing loops and rear fender.

ENGINE SPECIFICATIONS

	GAS	*DIESEL	*DIESEL
MAKE & MODEL	IHC RD501	GM6-71N	CUMMINS NH230
CYLINDERS	6	6	6
BORE & STROKE	4.5" x 5.25"	4.25" x 5.0"	5.5" x 6.0"
DISPLACEMENT	501 cu. in.	426 cu. in.	855 cu. in.
HORSEPOWER	214.8 @ 3000 RPM	238 @ 2100 RPM	230 @ 2100 RPM
GOVERNED @	2600 RPM	2100 RPM	2100 RPM
TORQUE	451 lbs. ft. @ 1600 RPM	649 lbs. ft. @ 1400 RPM	605 lbs. ft. @ 1500 RPM
AIR CLEANER	Dry type	Dry type	Dry type
FUEL CAPACITY	60 on GC	60 on GC	60 on GC
GALLONS	50 on GH	50 on GH	50 on GH

DIMENSIONAL CHART



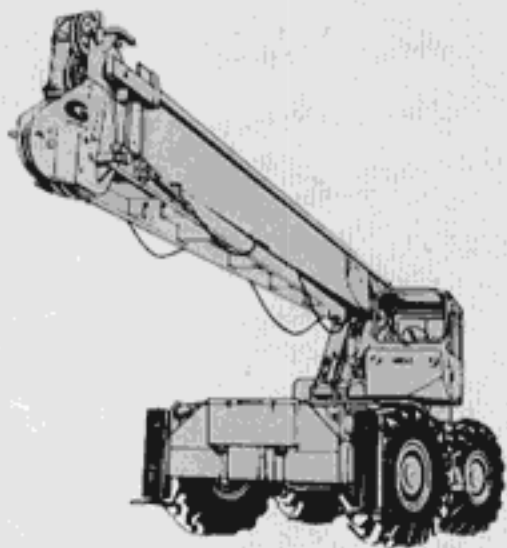
KEY BOOM	C. C. C. CARRIER									
	A	B	C	D	E	F	G	H	I	J
32' - 80'	8' - 11"	39' - 7"	11' - 10-1/4"	31' - 11-3/4"	4' - 0-3/4"	10' - 1-1/4"	24-11/16"	26-1/4"	24-1/2"	70-7/16"
29' - 92'	6' - 6-3/4"	37' - 2-3/4"	11' - 7-1/4"	29' - 7-1/2"	4' - 0-3/4"	10' - 1-1/4"	24-11/16"	26-1/4"	24-1/2"	70-7/16"
32' - 101'	9' - 6-3/4"	40' - 2-3/4"	11' - 10-1/4"	32' - 7-13/32"	4' - 0-3/4"	10' - 1-1/4"	24-11/16"	26-1/4"	24-1/2"	70-7/16"
KEY BOOM	HENDRICKSON CARRIER									
	A	B	C	D	E	F	G	H	I	J
32' - 80'	9' - 6-1/2"	39' - 6-19/32"	11' - 11-1/4"	31' - 11-3/4"	4' - 1-3/4"	10' - 2-1/4"	25"	25"	24"	65-1/2"
29' - 92'	7' - 2-1/4"	37' - 2-1/4"	11' - 8-1/4"	29' - 7-13/32"	4' - 1-3/4"	10' - 2-1/4"	25"	25"	24"	65-1/2"
32' - 101'	10' - 2-1/4"	40' - 2-1/4"	11' - 11-1/4"	32' - 7-13/32"	4' - 1-3/4"	10' - 2-1/4"	25"	25"	24"	65-1/2"

MORE PROFITABLE MORE VERSATILE

for a wider
variety of lifting
& handling jobs!

THE PREFERENCE FOR GROVE CRANES among profit-minded crane users reflects the users need for the versatility and advanced design engineering offered in all Grove Hydraulic Cranes. They add up to profit making performance, a measurable value that tells him he is getting his money's worth on his Grove Crane investment. That's why the smart crane buyers have made Grove their NUMBER ONE CHOICE.

A FULL LINE OF HYDRAULIC CRANES . . . in addition to a full line of carrier mounted cranes, Grove also offers a complete line of self-propelled cranes including a 30-ton model with performance features, reach and capacity to match the TM275LP. Ask your Grove Distributor for details.



HYDRAULIC CRANES

GROVE MANUFACTURING COMPANY
A Division of Walter Kidde & Company, Inc.
Shady Grove, Pa. 17256

1. Long-stroke vertical jacks make it easier to level the crane on uneven ground.

2. Boom can be lowered below horizontal permitting ground level work on hookblock or boomhead and for easier, faster jib erection.

3. Special lift cylinders on the TM275LP permit the boom to be trailed to the rear on a dolly.



This low-profile crane has the reach, capacity and performance to be a real profit-maker in your crane fleet.

