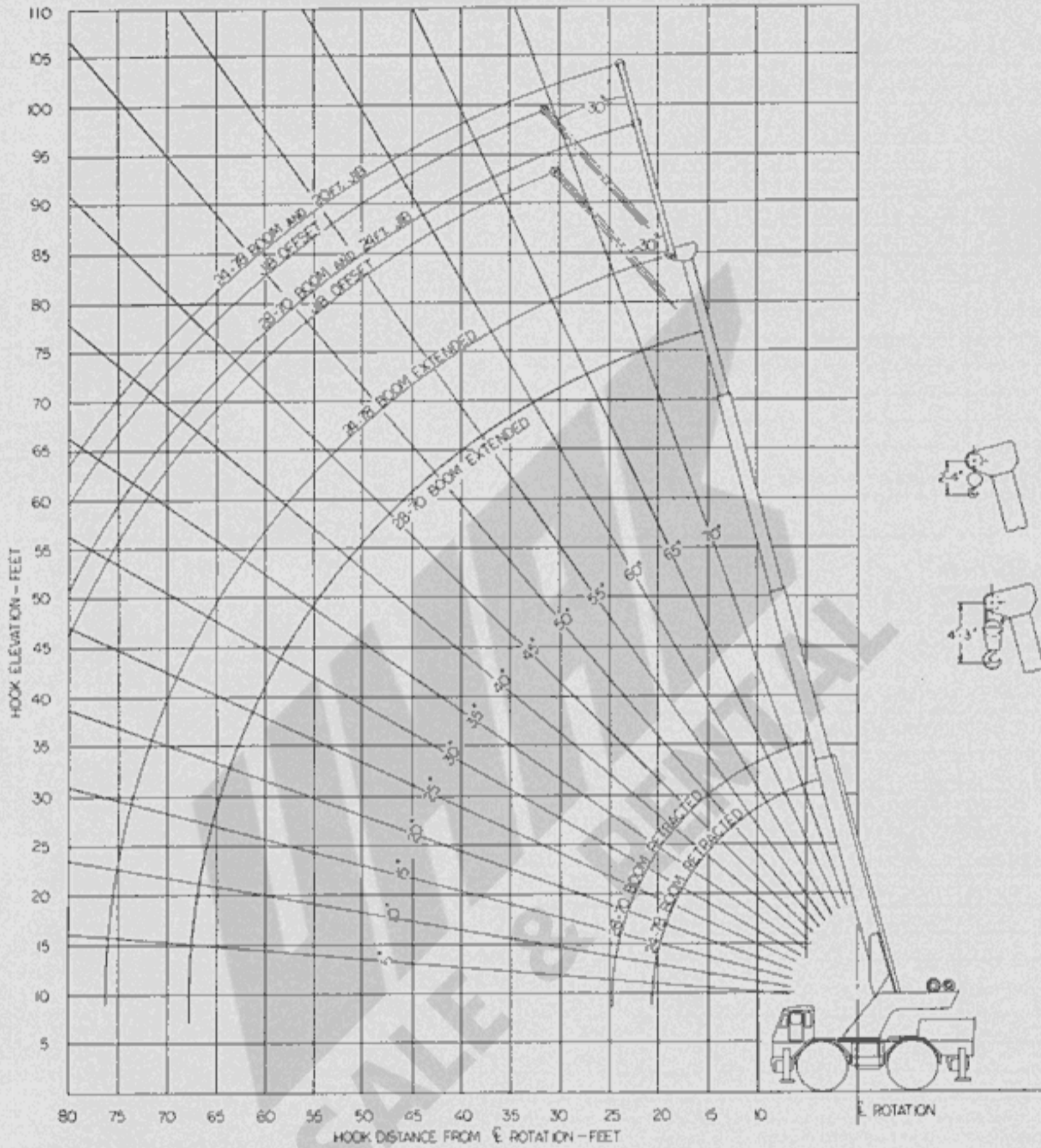




RT60

24' - 78' BOOM
AND
28' - 70' BOOM

HOOK ELEVATION CHART



20' JIB CAPACITIES

MIN. BOOM ANGLE	NO OFFSET	MAX. (30°) OFFSET
75°	6,200 lbs.	2,600 lbs.
70°	5,000	2,400
65°	4,300	2,300
60°	3,700	2,150
55°	3,300	2,100
50°	2,600	1,650
45°	2,400	1,500
40°	2,200	1,460
30°	1,900	1,200

Jibs are to be used for:
Single Line Operations Only.

All jib capacities are based on structural strength of the jib or main boom. Actual loads must not exceed capacities given in the main boom capacity chart for the same working radius less the allowance for jib weight.

24' JIB CAPACITIES

MIN. BOOM ANGLE	NO OFFSET	MAX. (26°) OFFSET
75°	6,000 lbs.	2,700 lbs.
70°	4,750	2,550
65°	4,000	2,375
60°	3,500	2,300
55°	3,150	2,200
50°	2,900	2,170
45°	2,650	2,125
40°	2,550	2,085
30°	2,400	2,000
26°	2,300	1,950



RT 60 28'-70' BOOM

RATED LIFTING CAPACITIES ON OUTRIGGERS - 360°

RADIUS IN FEET	BOOM LENGTH IN FEET							
	28	34	40	46	52	58	64	70
10	36,000	34,000	31,900	29,800				
12	32,000	31,000	30,000	29,800	27,800			
15	27,500	27,500	27,500	27,500	27,000	25,750	23,700	
20	21,250	21,250	21,000	21,000	20,750	20,500	20,400	20,250
25		15,500	15,500	15,500	15,500	15,500	15,000	15,000
30			11,700	11,700	11,700	11,700	11,700	11,700
35				8,650	8,650	8,650	8,650	8,650
40				6,650	6,650	6,650	6,650	6,650
45					5,250	5,250	5,250	5,250
50						4,250	4,250	4,250
55							3,460	3,460
60							2,760	2,760
65								2,180
66.5								1,970

Capacities above the bold line are based on machinery strength and tipping should not be relied upon as a capacity limitation.

A6-829-000196

RATED LIFTING CAPACITIES ON RUBBER

RADIUS IN FEET	OVER FRONT	OVER SIDE
10	30,000	19,500
12	24,500	14,800
15	16,600	9,800
20	10,300	5,450
25	6,650	3,660
30	4,850	2,300
35	3,380	1,330
40	2,680	470
45	1,525	
50	950	
55	635	

A6-829-000197

NOTES:

- Chart based on 16.00 x 24 tires and 80 PSI inflation pressure. Loads must be reduced for lower inflation pressures.

RADIUS IN FEET	OVER FRONT	OVER SIDE
10	18,000	18,000
12	18,000	14,800
15	16,600	9,800
20	10,300	5,450
25	6,650	3,660
30	4,850	2,300
35	3,380	1,330
40	2,680	470
45	1,525	
50	950	
55	635	

A6-829-000296

NOTES:

- Chart based on 17.5 x 25 tires and 80 PSI inflation pressure. Loads must be reduced for lower inflation pressures.
- Capacities above bold line are based on machinery strength and tipping should not be relied upon as a capacity limitation.



RT 60 24'-78' BOOM

RATED LIFTING CAPACITIES ON OUTRIGGERS - 360°

RADIUS IN FEET	MANUAL FLY SECTION RETRACTED							Manual Fly Extended
	BOOM LENGTH IN FEET							
	24	30	36	42	48	54	60	*78
10	36,000	34,500	32,700	30,800				
12	32,000	32,000	31,000	29,900	28,000			
15	26,000	26,000	26,000	25,500	24,000	22,000	20,000	
20	20,000	20,000	20,000	20,000	20,000	19,000	17,500	
25		13,000	13,000	13,000	13,000	13,000	13,000	13,000
30			10,800	10,800	10,800	10,800	10,800	10,800
35				8,200	8,200	8,200	8,200	8,200
40					6,100	6,100	6,100	6,400
45						4,300	4,300	4,500
50							2,800	3,200
55								1,600
60								2,200
65								1,600
70								1,300
74.8								1,175

Capacities above the bold line are based on machinery strength and tipping should not be relied upon as a capacity limitation.

*ALSO INDICATES MAXIMUM CAPACITY OF EXTENDED FLY SECTION, REGARDLESS OF BOOM LENGTH.

A6-829-000200

RATED LIFTING CAPACITIES ON RUBBER

RADIUS IN FEET	OVER FRONT	OVER SIDE
10	30,000	18,000
12	24,500	13,500
15	16,500	8,000
20	9,500	4,500
25	6,400	2,900
30	4,250	1,200
35	2,675	600
40	1,500	350
45	950	
50	560	

A6-829-000201

NOTES:

- Chart based on 16.00 x 24 tires and 80 PSI inflation pressure. Loads must be reduced for lower inflation pressures.

RADIUS IN FEET	OVER FRONT	OVER SIDE
10	18,000	18,000
12	18,000	13,500
15	16,500	8,000
20	9,500	4,500
25	6,400	2,900
30	4,250	1,200
35	2,675	600
40	1,500	350
45	950	
50	560	

A6-829-000297

NOTES:

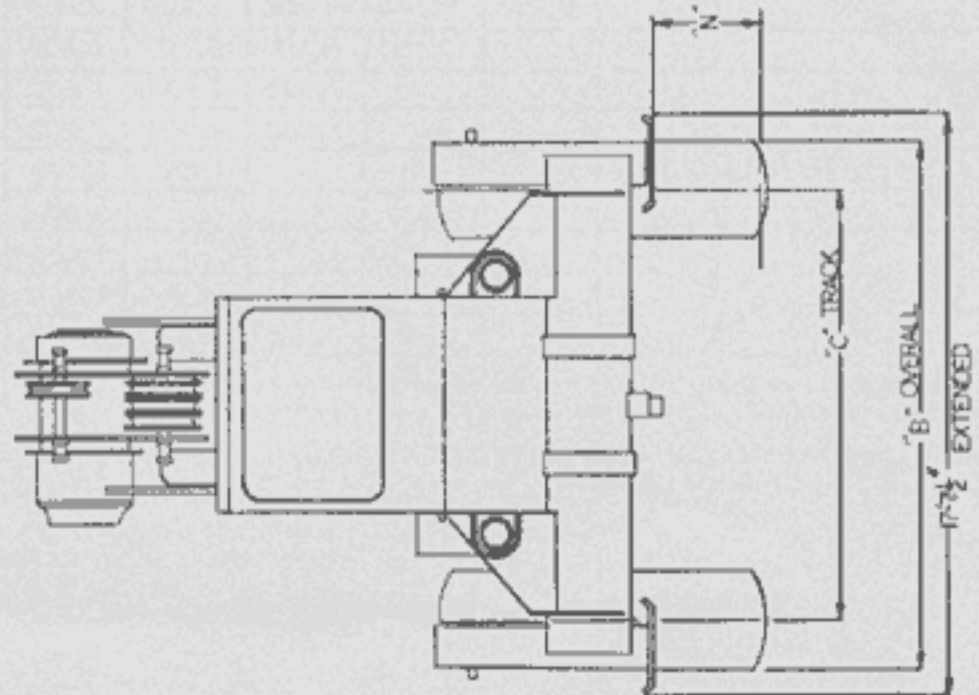
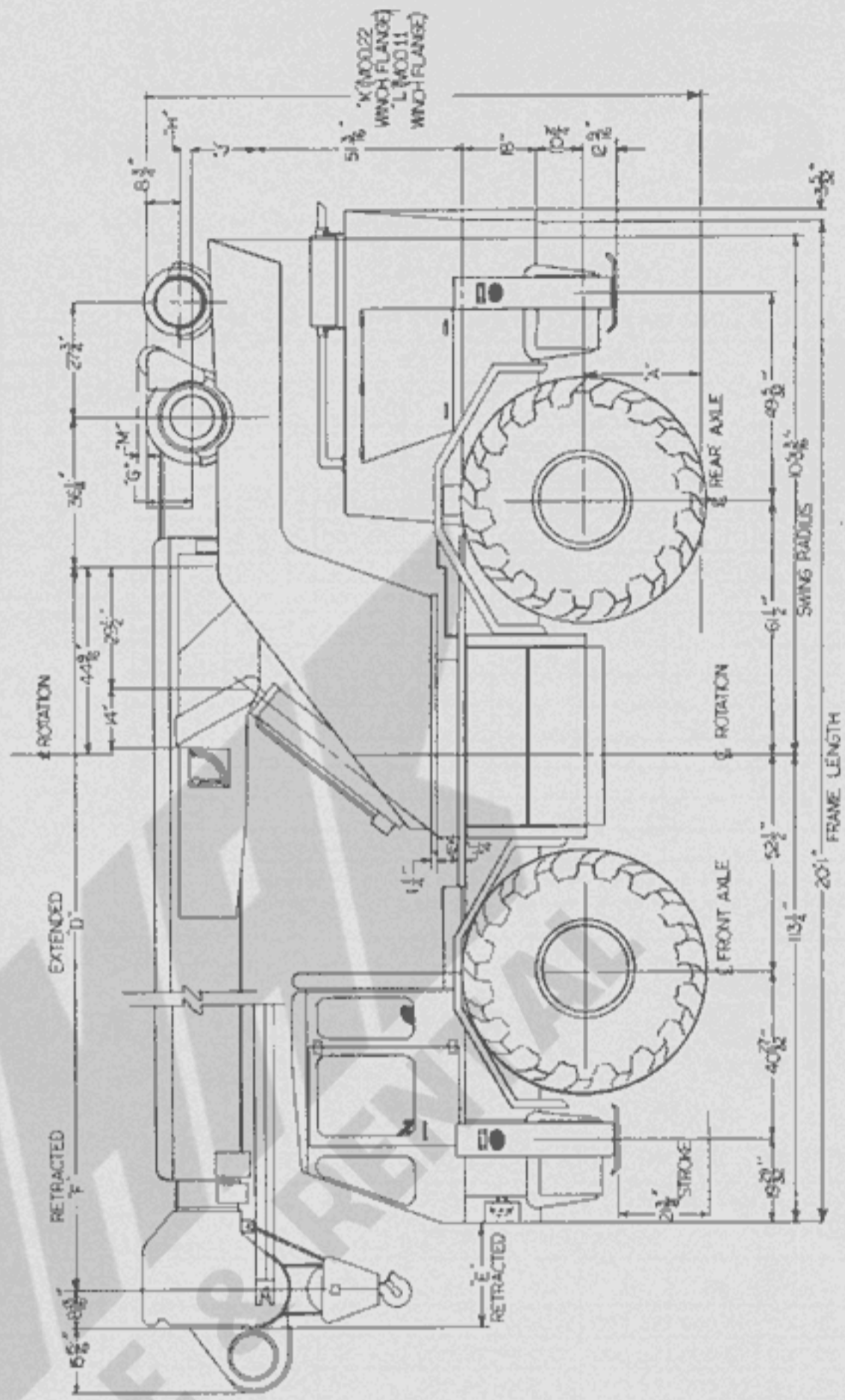
- Chart based on 17.5 x 25 tires and 80 PSI inflation pressure. Loads must be reduced for lower inflation pressures.
- Capacities above bold line are based on machinery strength and tipping should not be relied upon as a capacity limitation.

ABOVE CAPACITIES WITH MANUAL FLY SECTION RETRACTED.

IMPORTANT - Refer to the general NOTES TO LIFTING CAPACITIES (page 3)

RT60 DIMENSIONAL CHART

DIM	FIRE OPTIONS	TRACK	TRACK OPTIONS	MANUALS	TRACK
A	1135	1135	1135	1135	1135
B	1135	1135	1135	1135	1135
C	1135	1135	1135	1135	1135
D	1135	1135	1135	1135	1135
E	1135	1135	1135	1135	1135
F	1135	1135	1135	1135	1135
G	1135	1135	1135	1135	1135
H	1135	1135	1135	1135	1135
I	1135	1135	1135	1135	1135
J	1135	1135	1135	1135	1135
K	1135	1135	1135	1135	1135
L	1135	1135	1135	1135	1135
M	1135	1135	1135	1135	1135
N	1135	1135	1135	1135	1135





RT 60 21'-51' BOOM

RATED LIFTING CAPACITIES ON RUBBER

RADIUS IN FEET	OVER FRONT	OVER SIDE	RADIUS IN FEET	OVER FRONT	OVER SIDE
10	30,000	19,500	10	*18,000	*18,000
12	24,600	14,800	12	*18,000	14,800
15	17,500	10,600	15	**17,500	10,600
17	16,000	9,000	17	16,000	9,000
20	11,800	7,100	20	11,800	7,100
25	7,600	5,000	25	7,600	5,000
30	5,800	3,100	30	5,800	3,100
35	4,400	2,100	35	4,400	2,100
40	3,300	1,200	40	3,300	1,200
45	2,600	800	45	2,600	800
47	2,300		47	2,300	

RATED LIFTING CAPACITIES ON OUTRIGGERS - 360°

RADIUS IN FEET	BOOM LENGTH IN FEET					
	21	27	33	39	45	51
10	36,000	33,000	32,000	31,000	30,000	
12	32,000	32,000	31,000	30,000	28,000	
15	26,000	26,000	26,000	26,000	25,000	23,000
17	23,000	23,000	23,000	23,000	22,000	21,500
20		20,000	20,000	20,000	20,000	20,000
25			15,000	15,000	15,000	15,000
30				11,600	11,600	11,600
35				9,100	9,100	9,100
40					6,800	6,800
45						5,800
47						5,000

Capacities above the bold line are based on machinery strength and tipping should not be relied upon as a capacity limitation.
A6-829-000277

A6-829-000276

NOTES:

- Chart based on 16.00 x 24 tires and 80 PSI inflation pressure. Loads must be reduced for lower inflation pressures.

A6-829-000294

NOTES:

- Chart based on 17.5 x 25 tires and 80 PSI inflation pressure. Loads must be reduced for lower inflation pressures.
- *For 18,000 lb. lifting capacity, maximum boom length is 42'.
- **For 17,500 lb. lifting capacity, maximum boom length is 48'.
- Capacities above bold line are based on machinery strength and tipping should not be relied upon as a capacity limitation.



RT 60 24'-60' BOOM

RATED LIFTING CAPACITIES ON RUBBER

RADIUS IN FEET	OVER FRONT	OVER SIDE	RADIUS IN FEET	OVER FRONT	OVER SIDE
10	*30,000	19,500	10	*18,000	*18,000
12	24,600	14,800	12	*18,000	14,800
15	16,500	9,800	15	16,500	9,800
20	11,200	6,350	20	11,200	6,350
25	7,200	3,860	25	7,200	3,860
30	5,250	2,680	30	5,250	2,680
35	3,660	1,650	35	3,660	1,650
40	2,780	550	40	2,780	550
45	2,100		45	2,100	
50	1,420		50	1,420	
55	940		55	940	

A6-829-000193

NOTES:

- *For 30,000 lb. lifting capacity, maximum boom length is 42'.
- Chart based on 16.00 x 24 tires and 80 PSI inflation pressure. Loads must be reduced for lower inflation pressures.

A6-829-000295

NOTES:

- For 18,000 lb. lifting capacity, maximum boom length is 42'.
- Chart based on 17.5 x 25 tires and 80 PSI inflation pressure. Loads must be reduced for lower inflation pressures.

RATED LIFTING CAPACITIES ON OUTRIGGERS - 360°

RADIUS IN FEET	BOOM LENGTH IN FEET						
	24	30	36	42	48	54	60
10	36,000	34,500	32,700	30,800			
12	32,000	32,000	31,000	30,000	28,000		
15	26,000	26,000	26,000	26,000	24,000	22,000	20,000
20	20,000	20,000	20,000	20,000	20,000	19,000	17,500
25		15,000	15,000	15,000	15,000	15,000	15,000
30			11,800	11,800	11,800	11,800	11,800
35				9,100	9,100	9,100	9,100
40					7,100	7,100	7,100
45						5,300	5,300
50							4,100
55							3,650

Capacities above the bold line are based on machinery strength and tipping should not be relied upon as a capacity limitation.
A6-829-000192

N
O
T
E
S

- Rated lifting capacities, with or without outriggers, are the maximum loads covered by the manufacturer's warranty with the machine standing on a firm, level and uniform supporting surface. Capacities do not exceed 85% of tipping loads. Practical working loads for the particular job shall be established by the user with due allowance for operating conditions. These conditions include the supporting ground and other factors affecting stability, wind, hazardous surroundings, experience of personnel, etc.
- For certain conditions, capacities are controlled by machinery strength. In these cases, machine tipping must not be relied upon as the capacity limitation.
- For clamshell and concrete bucket operation, weight of bucket and load should not exceed 90% of published lifting capacity.
- The weights of all load handling devices, (hook, blocks, ball, jib masts, rooster sheave, etc.) are considered a part of the load lifted, and suitable allowances for them should be made.
- Boom jib extensions may be used as straight, gooseneck extensions, and for lifting crane service only.
- With jib installed, lifting capacities over main boom must be reduced as follows: 17' jib, 1190 lbs. reduction; 20' jib, 1400 lbs. reduction; 24' jib, 1700 lbs. reduction.
- With outriggers set, maximum boom length (all booms) - including jib extended - may be raised from horizontal 360°.
- Long cantilever booms can create a tipping condition when in extended and lowered positions. Boom should be retracted proportionate to the capacity of the load chart.
- Each power-telescoping boom section should be extended equally at all times. Do not operate one fully extended and another fully retracted.
- Jibs to be used only with single part line. Multi-part rigging is not permissible.
- The maximum load which may be telescoped is limited by hydraulic pressure, boom angle, and boom lubrication. It is safe to attempt to telescope any load within the limits of the load chart.