

Kato Super75R (NK75-v2) 7.0t Hydraulic Truck Crane

SPECIFICATION

CRANE SPECIFICATION

| | | | | | | | |
|--|---|--------------------------------|-------------------|---------------------------------|---------------------------------|---------------------------------|--|
| Name | 7 Tonne Truck Crane | | | | | | |
| Model | Kato NK75-v2 Fully Hydraulic Truck Crane | | | | | | |
| Crane Performance | | | | | | | |
| Rated Lifting Capacity | <table style="border: none;"> <tr> <td style="border: none;">7.0 Tonne @ 2.5m 6.65m Boom</td> <td rowspan="5" style="border: none; vertical-align: middle;">} With Outriggers</td> </tr> <tr> <td style="border: none;">4.9 Tonne @ 3.5m 11.60m Boom</td> </tr> <tr> <td style="border: none;">3.9 Tonne @ 3.5m 16.55m Boom</td> </tr> <tr> <td style="border: none;">2.0 Tonne @ 5.0m 21.50m Boom</td> </tr> <tr> <td style="border: none;">1.3 Tonne @ 7.0m 6.65m Boom - 21.5m Boom + Rooster Sheave</td> </tr> </table> | 7.0 Tonne @ 2.5m 6.65m Boom | } With Outriggers | 4.9 Tonne @ 3.5m 11.60m Boom | 3.9 Tonne @ 3.5m 16.55m Boom | 2.0 Tonne @ 5.0m 21.50m Boom | 1.3 Tonne @ 7.0m 6.65m Boom - 21.5m Boom + Rooster Sheave |
| 7.0 Tonne @ 2.5m 6.65m Boom | } With Outriggers | | | | | | |
| 4.9 Tonne @ 3.5m 11.60m Boom | | | | | | | |
| 3.9 Tonne @ 3.5m 16.55m Boom | | | | | | | |
| 2.0 Tonne @ 5.0m 21.50m Boom | | | | | | | |
| 1.3 Tonne @ 7.0m 6.65m Boom - 21.5m Boom + Rooster Sheave | | | | | | | |
| Boom Length | 6.65m (Retracted) 21.50m (Full Extension) | | | | | | |
| Maximum Lifting Height | 21.80m (Boom) 22.10m (Rooster Sheave) | | | | | | |
| Hoisting Rope Speed | | | | | | | |
| Main | 54m/min (Low Speed) 110m/min (High Speed) (4 th Layer) | | | | | | |
| Auxiliary | 44m/min (Low Speed) 90m/min (High Speed) (2 nd Layer) | | | | | | |
| Hook Speed | | | | | | | |
| Main Hook | 9.0m/min (Low Speed) 18.3m/min (High Speed) (6 Ropes) (4 th Layer) | | | | | | |
| Auxiliary Hook | 44.0m/min (Low Speed) 90.0m/min (High Speed) (1 Rope) (2 nd Layer) | | | | | | |
| Boom Extension Speed | 14.85/40 sec | | | | | | |
| Boom Hoisting Angle | -6° ~ 80° | | | | | | |
| Boom Lifting Time | -6° ~ 80°/20 sec | | | | | | |
| Slewing Speed | 2.5 rpm | | | | | | |
| Wire Rope | | | | | | | |
| Main | IWRC 6×WS(26) ø10×120m Non-Rotating Type | | | | | | |
| Auxiliary | IWRC 6×WS(26) ø10×50m Non-Rotating Type | | | | | | |
| Hydraulic System | | | | | | | |
| Oil Pump | 3 Section High-Pressure Gear Pump | | | | | | |
| Hoisting Oil Motor | Axial Plunger Type | | | | | | |
| Slewing Oil Motor | Inscription Gear Type | | | | | | |
| Control Valve | Multiple Automatic Return Type (with Flow Regulating Valve with Pressure Compensation and Unloading Valve) | | | | | | |
| Cylinder | High-Pressure Double Acting Type | | | | | | |
| Oil Reservoir Capacity: | 120 litres | | | | | | |
| Upper Slewing Body and Structure | | | | | | | |
| Hoisting Device | Oil Motor Drive Spur Gear Speed Reduction Type (with Automatic Brake Device • Free Fall Device) 2 Axles 2 Drums | | | | | | |
| Slewing Device | Oil Motor Drive Planet Gear Speed Reduction Type | | | | | | |
| Slewing Circle | Ball Bearing Type | | | | | | |
| Boom Hoisting Device | Hydraulic Cylinder Direct Push Type | | | | | | |
| Boom Extension Retraction Device | Hydraulic Cylinder and Wire Rope Combination Type | | | | | | |
| Outrigger Device | Hydraulic Vertical Support Type | | | | | | |
| Front Jack | Hydraulic Type | | | | | | |
| Safety Devices | | | | | | | |
| | ACS (with Fully Automatic Overload Protector • Voice Alarm Device), Boom Free Fall Prevention Device, Overwinding Protector, Drum Hold Safety Device, Automatic Brake Device, Hydraulic Safety Valve, Outrigger Lock Device, Angle Indicator, Front Jack Overload Warning Device, Slewing Brake Device, Outrigger Extension Width Automatic Detector, Slewing Warning Light, Drum Revolution Detector | | | | | | |
| Standard Equipment | Crane Driver's Cab Heater, Crane Driver's Cab Fan, Crane Driver's Cab AM/FM Radio with Clock | | | | | | |

Rated Lifting Capacity Table (1)

| Outriggers Fully Extended (4.4m) with Front Jack - Over Side, Over Rear, Over Front | | | | | |
|---|-------------|------------|-------------|------------|----------------------------------|
| • Outriggers Fully Extended (4.4m) without Front Jack - Over Side, Over Rear | | | | | |
| • Outriggers Intermediately Extended (3.0m) - Over Rear | | | | | |
| • Outriggers Fully Retracted (1.98m) Blocked on Vertical Cylinders - Over Rear | | | | | |
| Working Radius (m) | 6.65m Boom | 11.6m Boom | 16.55m Boom | 21.5m Boom | 6.65-21.5m Boom + Rooster Sheave |
| 2.0 | 7.00 | | | | 1.30 |
| 2.5 | 7.00 | 4.90 | 3.90 | | 1.30 |
| 3.0 | 6.10 | 4.90 | 3.90 | 2.00 | 1.30 |
| 3.5 | 5.45 | 4.90 | 3.90 | 2.00 | 1.30 |
| 3.8 | 4.90 | 4.65 | 3.70 | 2.00 | 1.30 |
| 4.0 | 4.55 | 4.50 | 3.60 | 2.00 | 1.30 |
| 4.5 | 3.75 | 3.85 | 3.30 | 2.00 | 1.30 |
| 5.0 | 3.15 | 3.25 | 3.05 | 2.00 | 1.30 |
| 5.5 | 2.70 | 2.80 | 2.80 | 1.85 | 1.30 |
| 6.0 | 2.35 | 2.45 | 2.50 | 1.70 | 1.30 |
| 7.0 | | 1.90 | 2.00 | 1.45 | 1.30 |
| 8.0 | | 1.55 | 1.60 | 1.25 | 1.20 |
| 9.0 | | 1.25 | 1.35 | 1.10 | 1.05 |
| 10.0 | | 1.05 | 1.15 | 1.00 | 0.95 |
| 11.0 | | 0.90 | 0.95 | 0.90 | 0.85 |
| 12.0 | | | 0.80 | 0.82 | 0.75 |
| 13.0 | | | 0.65 | 0.70 | 0.60 |
| 14.0 | | | 0.55 | 0.60 | 0.50 |
| 15.0 | | | 0.45 | 0.52 | 0.40 |
| 15.9 | | | 0.40 | 0.45 | 0.35 |
| 17.0 | | | | 0.37 | 0.32 |
| 18.0 | | | | 0.31 | 0.26 |
| 19.0 | | | | 0.25 | 0.20 |
| 20.0 | | | | 0.20 | 0.15 |
| 20.7 | | | | 0.17 | 0.12 |
| Standard Hook | for 7.0 ton | | | | for 1.3 ton |
| Hook Weight | 70 kg | | | | 20 kg |
| Parts of Line | 6 | | 4 | | 1 |

(unit: metric ton)

- Lifting capacities will automatically change when the crane slews into a reduced capacity area

Rated Lifting Capacity Table (2)

| Outriggers Intermediately Extended (3.0m) - Over Side | | | | | |
|---|-------------|------------|-------------|--------------------------|----------------------------------|
| • Outriggers Fully Extended (4.4m) - Over Front | | | | | |
| • Outriggers Intermediately Extended (3.0m) - Over Front | | | | | |
| • Outriggers Fully Retracted (1.98m) Blocked on Vertical Cylinders - Over Front | | | | | |
| Working Radius (m) | 6.65m Boom | 11.6m Boom | 16.55m Boom | 21.5m Boom | 6.65-21.5m Boom + Rooster Sheave |
| 2.0 | 7.00 | | | | 1.30 |
| 2.5 | 7.00 | 4.90 | 3.50 | | 1.30 |
| 3.0 | 5.20 | 4.90 | 3.50 | 2.00 | 1.30 |
| 3.5 | 3.80 | 3.90 | 3.50 | 2.00 | 1.30 |
| 3.8 | 3.20 | 3.30 | 3.05 | 2.00 | 1.30 |
| 4.0 | 2.90 | 3.00 | 2.80 | 2.00 | 1.30 |
| 4.5 | 2.20 | 2.40 | 2.40 | 2.00 | 1.30 |
| 5.0 | 1.80 | 1.95 | 1.95 | 1.80 | 1.30 |
| 5.5 | 1.40 | 1.60 | 1.60 | 1.65 | 1.30 |
| 6.0 | 1.10 | 1.35 | 1.35 | 1.40 | 1.05 |
| 7.0 | | 0.95 | 0.95 | 1.00 | 0.90 |
| 8.0 | | 0.70 | 0.70 | 0.75 | 0.65 |
| 9.0 | | 0.50 | 0.50 | 0.55 | 0.45 |
| 10.0 | | 0.35 | 0.35 | 0.40 | 0.30 |
| 11.0 | | 0.25 | 0.25 | 0.30 | 0.20 |
| Standard Hook | for 7.0 ton | | | | for 1.3 ton |
| Hook Weight | 70 kg | | | | 20 kg |
| Parts of Line | 6 | 4 | | 1 | |
| Critical Boom Angle | - | 40° | 54° | Depending on Boom Length | |

(unit: metric ton)

• Lifting capacities will automatically change when the crane slews into a reduced capacity area

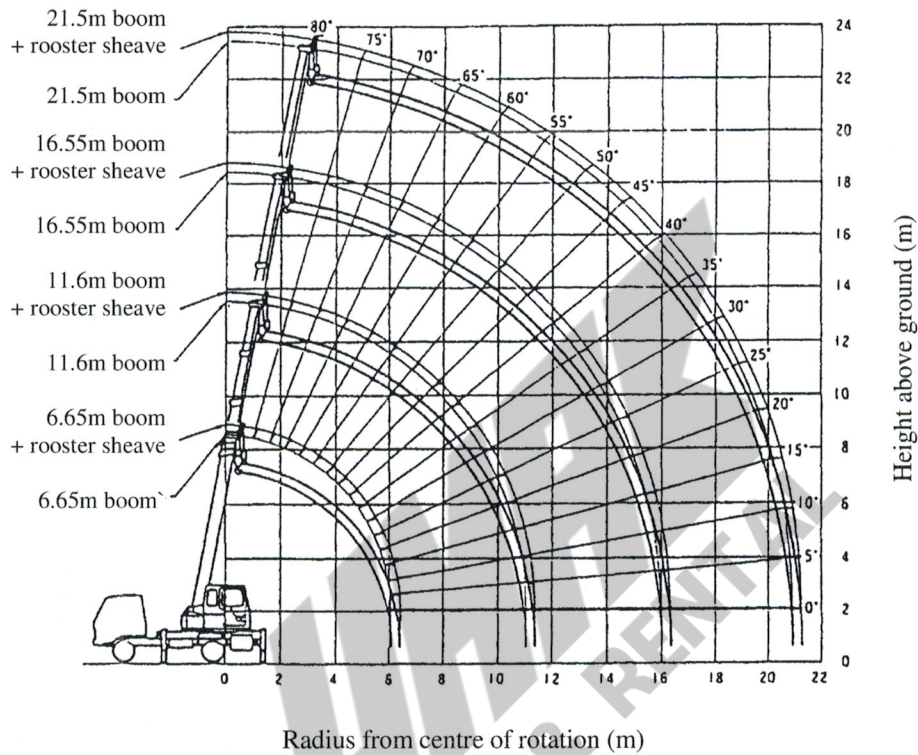
Rated Lifting Capacity Table (3)

| Outriggers Fully Retracted (1.98m) Blocked on Vertical Cylinders - Over Side | | | | | |
|--|-------------|------------|-------------|------------|----------------------------------|
| Working Radius (m) | 6.65m Boom | 11.6m Boom | 16.55m Boom | 21.5m Boom | 6.65-21.5m Boom + Rooster Sheave |
| 2.0 | 3.50 | | | | 1.30 |
| 2.5 | 2.60 | 2.40 | 2.25 | | 1.30 |
| 3.0 | 2.00 | 1.90 | 1.75 | 1.60 | 1.30 |
| 3.5 | 1.55 | 1.50 | 1.45 | 1.30 | 1.25 |
| 3.8 | 1.30 | 1.30 | 1.30 | 1.15 | 1.10 |
| 4.0 | 1.20 | 1.20 | 1.20 | 1.05 | 1.00 |
| 4.5 | 0.95 | 0.95 | 0.95 | 0.90 | 0.85 |
| 5.0 | 0.75 | 0.80 | 0.80 | 0.75 | 0.70 |
| 5.5 | 0.60 | 0.70 | 0.70 | 0.65 | 0.55 |
| 6.0 | 0.50 | 0.60 | 0.60 | 0.55 | 0.45 |
| 7.0 | | 0.45 | 0.45 | 0.40 | 0.35 |
| 8.0 | | 0.30 | 0.30 | 0.30 | 0.25 |
| Standard Hook | for 7.0 ton | | | | for 1.3 ton |
| Hook Weight | 70 kg | | | | 20 kg |
| Parts Line | 4 | | | | 1 |
| Critical Boom Angle | - | 33° | 54° | 63° | Depending on Boom Length |

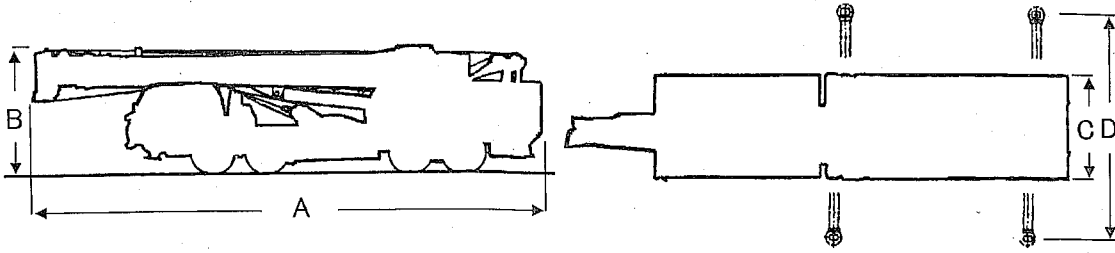
(unit: metric ton)

Kato Super75R (NK75-v2) 7.0t Hydraulic Truck Crane

SPECIFICATION WORKING RANGE DIAGRAM



- Note: 1. Deflection of boom and jib excluded
2. All outriggers fully extended with front jack



| | | | <u>NK75M-5</u> (ISZ UC) Super75 90- | <u>NK75M-V2</u> (MTB UC) Super75R 92- | <u>NK75M-V2</u> (NSN UC) Super75R 92- | <u>NK75M-V2</u> (HNO UC) Super75R 92- |
|------------------------|---------------|----------|---|---|---|---|
| Main Spec. | 主能力 | | | | | |
| Max lifting capacity | 最大吊上荷重 | (t) | 4.9 | 4.9 | 4.9 | 4.9 |
| Gross vehicle weight | 車両総重量 | (kg) | N/A | 7940 | 7960 | 7950 |
| Dimensions(mm) | 各部寸法 | | | | | |
| Overall length | 全長 | A | 7750 | 7750 | 7750 | 7750 |
| Overall height | 全高 | B | 3230 | 3290 | 3220 | 3340 |
| Overall width | 全幅 | C | 2190 | 2190 | 2200 | 2190 |
| Max outrigger width | アウトリガー最大幅 | D | 4400 | 4400 | 4400 | 4400 |
| Hyd. System | 油圧装置 | | | | | |
| Hyd. pump type x qty. | ポンプ形式×数 | | GP3x1 | GP3x1 | GP3x1 | GP3x1 |
| Wire Rope | ワイヤロープ | | | | | |
| Main winch wire | 主巻 | (m x mm) | 120x10 | 120x10 | 120x10 | 120x10 |
| Aux. winch wire | 補巻 | (m x mm) | 50x10 | 50x10 | 50x10 | 50x10 |
| Carrier | キャリア | | | | | |
| Manufacturer | メーカー | | ISZ | MTB | NSN | HNO |
| Model | 型式 | | U-FRR32DB | KC-FK617E | KC-MK211BN | KC-FC3JDAA |
| Performance | 性能 | | | | | |
| Max lifting hgt.(boom) | ブーム最大揚程 | (m) | 21.5 | 21.8 | 21.8 | 21.8 |
| Max lifting hgt. (jib) | ジブ最大揚程 | (m) | 22.1(rooster-sheave) | 22.1(rooster-sheave) | 22.1(rooster-sheave) | 22.1(rooster-sheave) |
| Working radius (boom) | ブーム作業半径 | (m) | 20.7 | 20.7 | 20.7 | 20.7 |
| Working radius (jib) | ジブ作業半径 | (m) | N/A | N/A | N/A | N/A |
| Boom length(retracted) | ブーム長さ(最小) | (m) | 6.65 | 6.65 | 6.65 | 6.65 |
| Boom length(extended) | ブーム長さ(最大) | (m) | 21.5 | 21.5 | 21.5 | 21.5 |
| Jib length | ジブ長さ | (m) | N/A | N/A | N/A | N/A |
| Boom extension speed | ブーム伸長速度 | (m/sec) | 14.85/40 | 14.85/40 | 14.85/40 | 14.85/40 |
| Winding-up speed(main) | 巻上速度(主) | (m/min) | 110 | 110 | 110 | 110 |
| Winding-up speed(aux.) | 巻上速度(補) | (m/min) | 90 | 90 | 90 | 90 |
| Boom derrick speed | ブーム上げ速度 | (sec) | 20 | 20 | 20 | 20 |
| Boom angle | ブーム起伏角度 | (deg) | -6 - 80 | -6 - 80 | -6 - 80 | -6 - 80 |
| Slewing speed | 旋回速度 | (rpm) | 2.5 | 2.5 | 2.5 | 2.5 |
| Boom | ブーム | | | | | |
| Type/No. of sections | 形式/段数 | | R/4 | /4 | /4 | /4 |
| Jib | ジブ | | | | | |
| Storage/No. of sect. | 格納/段数 | | NIL | NIL | NIL | NIL |
| Others | その他 | | | | | |
| Safety device | 安全装置 | | ACS,AWB,HRV,ORP,W SF,DSF,TSS,OWP,FJO, BAI,SBK | ACS,FFI,OWP,WSF,AW B,HRV,ORP,BAI,FJO,S BK,AOE,WTI | ACS,FFI,OWP,WSF,AW B,HRV,ORP,BAI,FJO,S BK,AOE,WTI | ACS,FFI,OWP,WSF,AW B,HRV,ORP,BAI,FJO,S BK,AOE,WTI |
| Remarks | 備考 | | N/A | N/A | N/A | N/A |