



# TADANO

## HYDRAULIC TRUCK LOADER CRANES

**NEW**

# CARGO CRANE

# ZR360 series

## ZR366/365/364/363



photo: "Hook In" system type

### The response of the new Cargo Crane ZR from Tadano is so good—as if the operator's thoughts become the crane operation.

We proudly announce the addition of the Cargo Crane ZR to the current ZF series. Tadano has reviewed all basic performance criteria, and produced a crane that is safer and easier to use. The new Cargo Crane ZR is strong, yet sensitive and flexible -responding like an extension of the operator's arm. The ZR360 series cranes can extend their outriggers to a maximum width of 4.2 meters, giving exceptional stability and a higher class of performance. In addition to the standard specifications, the ZR360 series offer special options such as "Hook In" system and remote radio-control. Feel free to select the most suitable Cargo Crane ZR model to meet your goal and application.



#### Automatic swing lock

Locks the boom in place when the truck is being driven for greater safety.

#### Smooth boom extension and retraction

Special valves absorb shocks during boom extension and retraction -for smoother operation.

#### Neat, streamlined boom ends

The cables and sheaves of the 2 to 5-section booms are all internal -for a clean, clutter-free appearance.

#### Centralized control panels

All the important function switches and rated lifting capacity chart are grouped together in panels -one on each side of the crane.



photo: "Hook In" system type

#### Wide outriggers to give more freedom in your choice of work

Wide outriggers (with a maximum width of 4.2 meters) allow you to work with a greater margin of safety.

### OPTIONAL EQUIPMENT



#### Tadano One-touch "Hook-in" Further Eases Operation.

Sure proof of Tadano's leading position in the cargo handling industry can be seen in the development of its innovative "Hook-In" system. A push of a button and the crane hook is stowed automatically. No more manual belaying.

#### Advanced, High-Efficiency Remote Operation at the Touch of a Button

Tadano cranes all offer the push-button operating ease of hand-held remote control. A multi-channel remote controller permits simultaneous operation of several cranes in close proximity without worries about crosstalk interference, and the system's cab-top 'Diversity' antenna rejects other radio interference for clear, trouble-free operation. Advanced computerized self-diagnostics also ensure long-term reliability.

\*This option is available subject to local laws and regulations.





# ZR360 series

## RATED LIFTING CAPACITIES

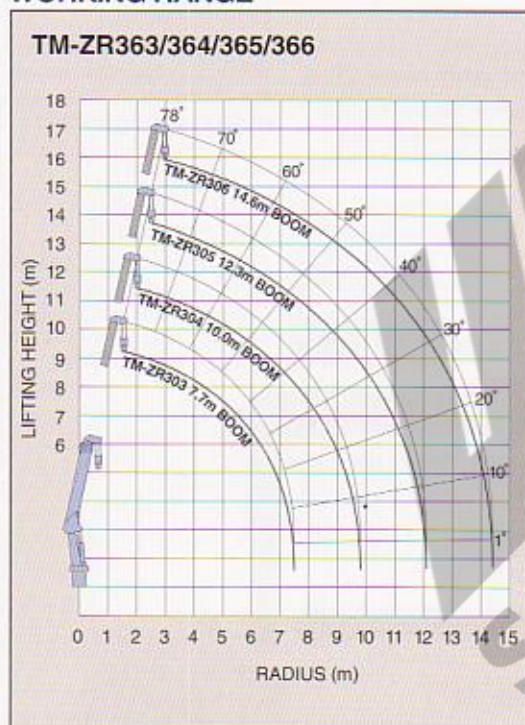
TM-ZR363								
3.27/5.5m boom								
Load Radius (m)	2.6 <sup>min</sup>	3.0	3.5	4.0	4.5	5.0	5.3	
Rated Lifting Capacity (kg)	3,030	2,480	2,030	1,730	1,530	1,330	1,280	
7.7m boom								
Load Radius (m)	2.7 <sup>min</sup>	3.2	3.5	4.0	4.5	5.0	5.5	6.0
Rated Lifting Capacity (kg)	2,330	2,030	1,780	1,480	1,280	1,130	1,030	930

TM-ZR365										
3.52/5.75m boom										
Load Radius (m)	2.4 <sup>min</sup>	2.5	3.0	3.5	4.0	4.5	5.0	5.5		
Rated Lifting Capacity (kg)	3,030	2,780	2,280	1,930	1,630	1,430	1,250	1,130		
7.95m boom										
Load Radius (m)	2.7 <sup>min</sup>	3.0	3.5	4.0	4.5	5.0	5.5	6.0	6.5	7.0
Rated Lifting Capacity (kg)	2,230	2,030	1,680	1,380	1,180	1,050	930	830	730	680
10.1m boom										
Load Radius (m)	4.0 <sup>min</sup>	5.0	6.0	7.0	8.0	9.0	9.92			
Rated Lifting Capacity (kg)	1,030	830	730	630	530	480	460			
12.3m boom										
Load Radius (m)	4.5 <sup>min</sup>	5.0	6.0	7.0	8.0	9.0	10.0	11.0	12.1	
Rated Lifting Capacity (kg)	760	630	480	400	350	310	280	250	250	

### NOTE :

- The mass of hook (30kg), slings and all similarly used load handling devices must be added to the mass of the load.
- Numerical values of rated lifting capacities are based on crane strength only. The rated lifting capacities based on stability may lower than those in the above table depending on the loading conditions and the types of the chassis.

## WORKING RANGE



### NOTE :

Lifting heights and boom angles are based on a straight (unladen) boom, and allowance should be made for boom deflection obtained under laden conditions.

※ Some specifications are subject to change.



TM-ZR364												
3.34/5.57m boom												
Load Radius (m)	2.55 <sup>min</sup>	3.0	3.5	4.0	4.5	5.0	5.37					
Rated Lifting Capacity (kg)	3,030	2,330	1,980	1,680	1,480	1,280	1,180					
7.78m boom												
Load Radius (m)	2.7 <sup>min</sup>	3.2	3.5	4.0	4.5	5.0	5.5	6.0	6.5	7.0	7.58	
Rated Lifting Capacity (kg)	2,330	2,030	1,730	1,430	1,230	1,080	980	880	780	730	680	
10.0m boom												
Load Radius (m)	4.0 <sup>min</sup>	5.0	6.0	7.0	8.0	9.0	9.8					
Rated Lifting Capacity (kg)	1,030	830	730	630	560	500	480					

TM-ZR366												
3.65/5.87m boom												
Load Radius (m)	2.4 <sup>min</sup>	2.5	3.0	3.5	4.0	4.5	5.0	5.67				
Rated Lifting Capacity (kg)	3,030	2,780	2,280	1,930	1,630	1,430	1,250	1,080				
8.07m boom												
Load Radius (m)	2.7 <sup>min</sup>	3.0	3.5	4.0	4.5	5.0	5.5	6.0	6.5	7.0	7.87	
Rated Lifting Capacity (kg)	2,230	2,030	1,680	1,380	1,180	1,050	930	830	730	680	630	
10.2m boom												
Load Radius (m)	4.0 <sup>min</sup>	5.0	6.0	7.0	8.0	9.0	9.0	10.0	10.05			
Rated Lifting Capacity (kg)	1,030	830	730	630	530	480	430					
12.4m boom												
Load Radius (m)	5.0 <sup>min</sup>	6.0	7.0	8.0	9.0	10.0	11.0	12.2				
Rated Lifting Capacity (kg)	630	480	400	350	310	280	250	230				
14.6m boom												
Load Radius (m)	4.9 <sup>min</sup>	6.0	7.0	8.0	9.0	10.0	11.0	12.0	13.0	14.4		
Rated Lifting Capacity (kg)	330	280	250	230	210	190	170	160	140	130		

## TECHNICAL SPECIFICATIONS

MODEL	TM-ZR363	TM-ZR364	TM-ZR365	TM-ZR366
<b>CRANE CAPACITY</b>	3,030kg at 2.6m (4 - part lines)	3,030kg at 2.55m (4 - part lines)	3,030kg at 2.4m (4 - part lines)	
<b>BOOM Type</b>	Fully hydraulic telescoping boom of pentagonal box construction	Fully powered partly synchronized telescoping boom of pentagonal box construction		
<b>Sections</b>	3	4	5	6
<b>Length</b>	3.27m - 7.7m	3.34m - 10.0m	3.52m - 12.3m	3.65m - 14.6m
<b>Extending Speed</b>	4.43m / 12sec	6.66m / 14sec	8.78m / 18sec	10.95m / 19sec
<b>Elevation Range/Speed</b>	1° - 78° / 7.5 sec			
<b>Max. Hook Height*</b>	Aprox. 9.2m*	Aprox. 11.4m*	Aprox. 13.7m*	Aprox. 15.9m*
<b>Max. Load Radius*</b>	7.5m*	9.8m*	12.1m*	14.4m*
<b>WINCH</b>	Hydraulic motor driven Spur gear speed reduction, provided with mechanical brake		Hydraulic motor driven Spur gear speed reduction, provided with mechanical brake and cable follower	
<b>Max. Single Line Pull</b>	7.45 kN (760 kgf)			
<b>Max. Single Line Speed</b>	76m / min. (at 4th layer)			
<b>Wire rope</b>	Diameter x length 8mm x 51m	Diameter x length 8mm x 63m	Diameter x length 8mm x 74m	Diameter x length 8mm x 85m
<b>SWING</b>	Hydraulic motor driven Worm gear speed reduction Continuous 360° full circle swing on ball bearing slew ring Automatic swing lock			
<b>Speed</b>	2.5 min <sup>-1</sup> (rpm)			
<b>OUTRIGGERS</b>	Manually extended sliders and hydraulically extended jacks Integral with crane frame Power up and down			
<b>Extended Width</b>	Max.: 4.2m Mid.: 2.9 / 3.6m Min.: 2.0m			
<b>HYDRAULIC SYSTEM</b>	Single gear pump			
<b>Pump</b>	Multiple control valves with integral safety valve			
<b>Control Valves</b>	Multiple control valves with integral safety valve			
<b>STANDARD SAFETY EQUIPMENT</b>	● Load meter ● Load indicator ● Over-winding alarm ● P.T.O indicator lamp ● Hook safety latch ● Level gauge ● Hydraulic safety valves, check valves and holding valves			
<b>SUITABLE TRUCKS</b>	Gross vehicle mass (including crane mass) 7.5 to 10 tons			

### NOTE :

- Operating speeds of the crane are guaranteed under the condition that the pump delivery is 60l / min.
- \*No allowance made for boom deflection under laden conditions.



**TADANO LTD.**

(International Headquarters)

4-12, Kamezawa 2-chome, Sumida-ku, Tokyo 130-0014, Japan

Tel: 81-3-3621-7752 Fax: 81-3-3621-7785

<http://www.tadano.co.jp/indexe.htm>

E-mail: [tdnihq@tadano.co.jp](mailto:tdnihq@tadano.co.jp)