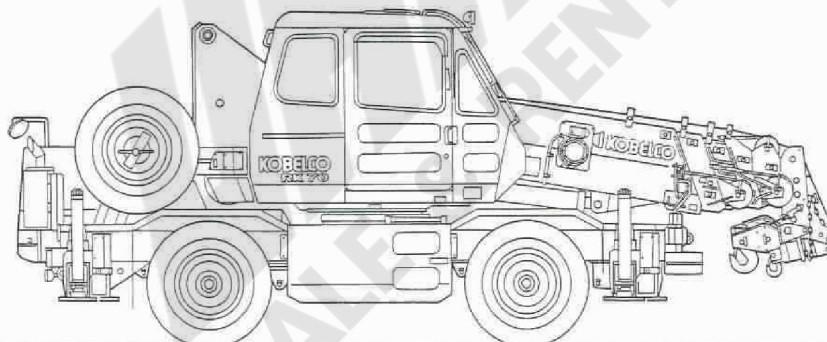


MINI ROUGH TERRAIN CRANE

RK70



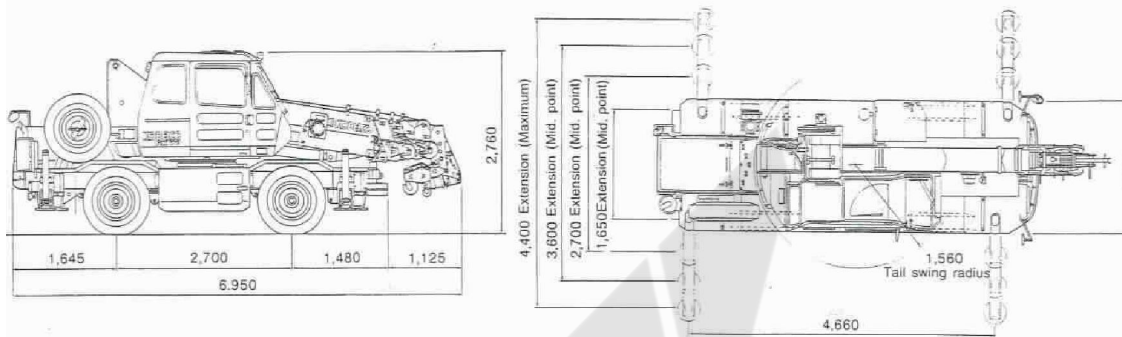
SPECIFICATIONS

Max. Lifting capacity: 7.0 metric tons x 2.5 meters
Max. Boom Length: 21.2 meters

Dimensions

RK70

Unit: mm



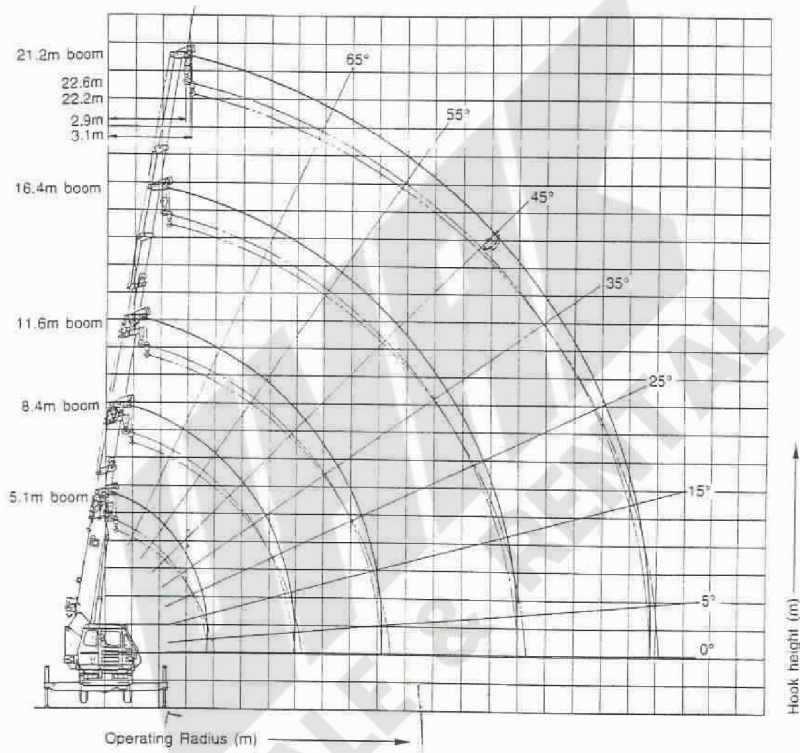
Exit Width

Unit: mm

Carrier					
4-Drive Steering to the left to the right		2-Drive Steering to the left to the right		2-Drive Steering (Rear) to the left to the right	
3,263	3,260	3,939	3,944	3,970	3,965
3,263	3,260	3,939	3,944	3,970	3,965
Carrier with Boom					
4-Drive Steering to the left to the right		2-Drive Steering to the left to the right		2-Drive Steering (Rear) to the left to the right	
3,413	3,471	3,972	4,053	3,970	3,965
3,413	3,471	3,972	4,053	3,970	3,965

Note: RK70 can be driven with no boom overhang.

Working Ranges



With outrigger in 4.4m position — 360° working area

(METRICTON)

Operating radius in meters	Boom length in meters				
	5.1	8.4	11.6	16.4	21.2
1.0	7.00	4.90			
1.5	7.00	4.90	4.90		
2.0	7.00	4.90	4.90		
2.5	7.00	4.90	4.90	3.90	
3.0	6.10	4.90	4.90	3.90	2.00
3.5	5.30	4.90	4.90	3.90	2.00
4.0	4.90 (3.7m)	4.50	4.50	3.60	2.00
4.5		3.85	3.87	3.30	2.00
5.0		3.33	3.37	3.05	2.00
5.5		2.95	2.97	2.82	1.85
6.0		2.62	2.65	2.56	1.70
7.0		2.15 (6.9m)	2.14	2.15	1.50
8.0			1.70	1.84	1.40
9.0			1.40	1.60	1.23
10.0			1.20	1.40	1.09
11.0			1.16 (10.2m)	1.20	0.98
12.0				1.02	0.89
13.0				0.85	0.82
14.0				0.69	0.75
15.0				0.55	0.69
16.0					0.59
17.0					0.51
18.0					0.43
19.0					0.36
20.0					0.35 (19.8m)
21.0					
Min. angle	—	—	—	—	—