

Preliminary

Hydraulic Crawler Crane

CK

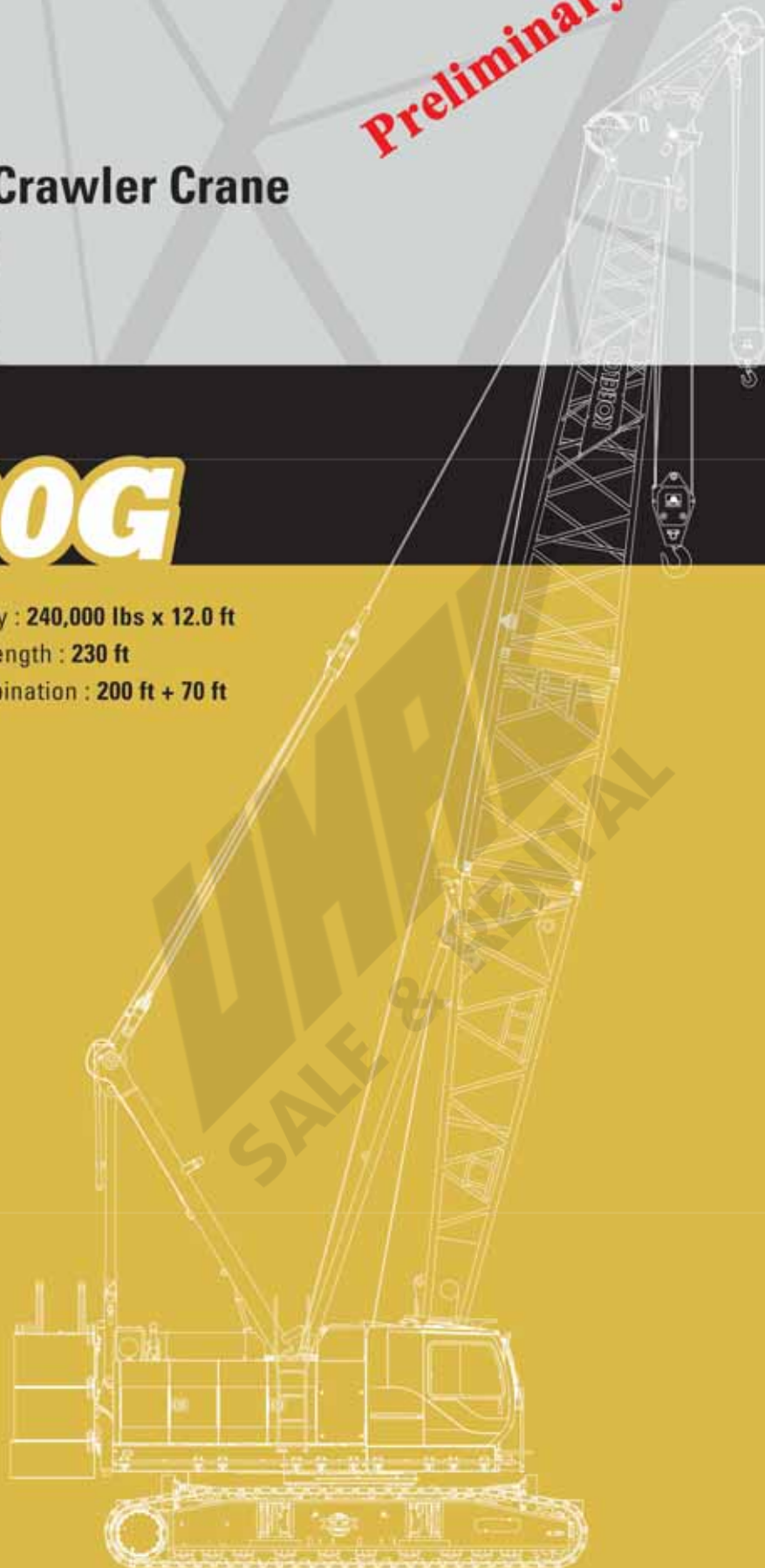
1200G

Model : CK1200G

Max. Lifting Capacity : 240,000 lbs x 12.0 ft

Max. Crane Boom Length : 230 ft

Max. Fixed Jib Combination : 200 ft + 70 ft



KOBELCO

UMAX
SALE & RENTAL

CK1200G CONTENTS

3

SPECIFICATIONS

5

GENERAL DIMENSIONS

6

BOOM AND JIB ARRANGEMENTS

7

WORKING RANGES

10

SUPPLEMENTAL DATA

11

LIFTING CAPACITY

19

TRANSPORTATION PLAN

21

PARTS AND ATTACHMENTS

SPECIFICATIONS



Power Plant

Model: HINO J08E-UV

Type: 4 cycle, water-cooled, vertical in-line 6, direct injection, turbo-charger, intercooler

Complies with US EPA Tier Interim Tier IV and NRMM (Europe) Stage IIIB

Displacement: 469 cu in (7.684 liters)

Rated Power: 285 HP/2,100 rpm (213 kW/2,100 min⁻¹)

Max. torque: 750 lbf-ft / 1,600 rpm (1,017 N-m/1,600 min⁻¹)

Cooling system: Water-cooled

Starter: 24V-5kW

Radiator: Corrugated type core, thermostatically controlled

Air cleaner: Dry type with replaceable paper element

Throttle: Twist grip type hand throttle, electrically actuated

Fuel filter: Replaceable paper element

Batteries: Two 12V x 136 Ah/5HR capacity batteries, series connected

Fuel tank capacity: 106 US gal. (400 liters)



Hydraulic System

Main pumps: 3 variable displacement piston pumps

Control: Full-flow hydraulic control system for infinitely variable pressure to all winches, propel and swing. Controls respond instantly to the touch, delivering smooth function operation.

Cooling: Oil-to-air heat exchanger (plate-fin type)

Filtration: Full-flow and bypass type with replaceable element

Electrical system: All wiring corded for easy servicing, individual fused branch circuits.

Max. relief valve pressure:

Load hoist, boom hoist and propel system:

4,626 psi (31.9 MPa)

Swing system: 3,989 psi (27.5 MPa)

Control system: 783 psi (5.4 MPa)

Hydraulic tank capacity: 141.3 US gal. (535 liters)



Boom Hoisting System

Powered by a hydraulic motor through a planetary reducer.

Brake: A spring-set, hydraulically released multiple-disc brake is mounted on the boom hoist motor and operated through a counter-balance valve.

Drum lock: External ratchet for locking drum

Drum: Single drum, grooved for 25/32 inch (20 mm) dia. wire rope

Line speed: Single line on first drum layer

Hoisting/Lowering: 157 to 6.6 ft/min (48 to 2 m/min)

Diameter of wire rope

Main winch: 1-1/32 in. x 853 ft (26 mm x 265 m)

Aux. winch: 1-1/32 in. x 755 ft (26 mm x 235 m)

Third winch: 1-1/32 in. x 623 ft (22 mm x 190 m)

Boom hoisting/lowering: 25/32 in. x 509 ft (20 mm x 155 m)

Boom guy line: 1-11/32 in. (34 mm)

Boom backstops: Required for all boom length



Load Hoist System

Front and rear drums for load hoist powered by a hydraulic variable plunger motors, driven through planetary reducers.

Negative brake: A spring-set, hydraulically released multiple-disc brake is mounted on the hoist motor and operated through a counter-balance valve. (Positive free fall brake is optional)

Drum lock: External ratchet for locking drum

Drums:

Front drums:

2 ft 3/16 inch (614 mm) P.C.D x 2ft 9/32 inch (617 m) Lg., grooved for 1-1/32 inch (26 mm) wire rope. Rope capacity is 853 ft (260 m) working length and 1,181 ft (361 m) storage length.

Rear drums:

2 ft 3/16 inch (614 mm) P.C.D x 2ft 9/32 inch (617 m) Lg., grooved for 1-1/32 inch (26 mm) wire rope. Rope capacity is 755 ft (230 m) working length and 1,181 ft (361 m) storage length.

Line speed: Single line on the first layer

Hoisting/Lowering: 394 to 10 ft

Line pull:

Max. line pull (Single line): 46,800 lbs (208 kN)

Rated line pull: 25,000 lbs (108 kN)



Swing System

Swing unit is powered by hydraulic motor driving spur gears through planetary reducers (2 set), the swing system provides 360° rotation.

Swing parking brakes: A spring-set, hydraulically released multiple-disc brake is mounted on swing motor.

Swing circle: Single-row ball bearing with an integral internally cut swing gear.

Swing lock: Manually, four position lock for transportation

Swing speed: 3.2 rpm (min⁻¹)



Upper Structure

Torsion-free precision machined upper frame. All components are located clearly and service friendly. Engine will with low noise level.

Counter weight: 76,300 lbs



Cab & Control

Totally enclosed, full vision cab with safety glass, fully adjustable, high backed seat with a headrest and armrests, and intermittent wiper and window washer (skylight and front window).

Cab fittings:

Air conditioner, convenient compartment (for tool), cup holder, ashtray, cigarette lighter, sun visor, roof blind, tinted glass, floor mat, footrest, shoe tray, and foot acceleration pedal.

Controls:

Four adjustable levers for front drum, rear drum, boom drum and swing controls.

**Lower Structure**

Steel-welded carbody with axles. Crawler assemblies are designed with quick disconnect feature for individual removal as a unit from axles. Crawler belt tension is maintained by hydraulic jack force on the track adjusting bearing block.

Carbodyweight: 14,300 lbs

Crawler drive: Independent hydraulic propel drive is built into each crawler side frame. Each drive consists of a hydraulic motor propelling a driving tumbler through a planetary gear box. Hydraulic motor and gear box are built into the crawler side frame within the shoe width.

Crawler brakes: Spring-set, hydraulically released parking brakes are built into each propel drive.

Steering mechanism: A hydraulic propel system provides both skid steering (driving one track only) and counter-rotating steering (driving each track in opposite directions).

Track rollers: Sealed track rollers for maintenance-free operation.

Shoe (flat): 2 ft 11 in wide each crawler

Max. gradeability: 40%

**Weight**

Including upper and lower machine, 76,300 lbs counterweight and 14,300 lbs carbody weight, basic boom (or basic boom + basic jib), hook, and other accessories.

Weight: 220,300 lbs (102 t)

Ground pressure: 13.6 psi (95.4 kPa)

**Attachment****Boom and Jib:**

Welded lattice construction using tubular, high-tensile steel chords with pin connections between sections.

Boom and Jib Length

	Min. Length (Min. Combination)	Max. Length (Max. Combination)
Crane Boom	50 ft	230 ft
Fixed Jib	90 ft + 30 ft	200 ft + 70 ft

Main Specifications (Model: CK1200G)

Crane Boom	
Max. Lifting Capacity	240,000 lbs
Length	50 ~ 230 ft
Fixed Jib	
Max. Lifting Capacity	24,000 lbs
Max. Length	70 ft
Max. Combination	200 ft + 70 ft
Power Plant	
Model	HINO J08E-UV
Engine Output	285 HP/2,100 rpm
Fuel Tank Capacity	106 US gal. (400 liters)
Main & Aux. Winch	
Max. Line Speed	390 ft/min (120 m/min): 1st layer
Rated Line Pull (single Line)	25,000 lbs (108 kN)
Wire Rope Diameter	1-1/32 in (26 mm)
Brake Type	Spring set hydraulically released (Negative)

Working Speed

Swing Speed	3.2 rpm (min ⁻¹)
Travel Speed	0.86/0.62 mph

Hydraulic System

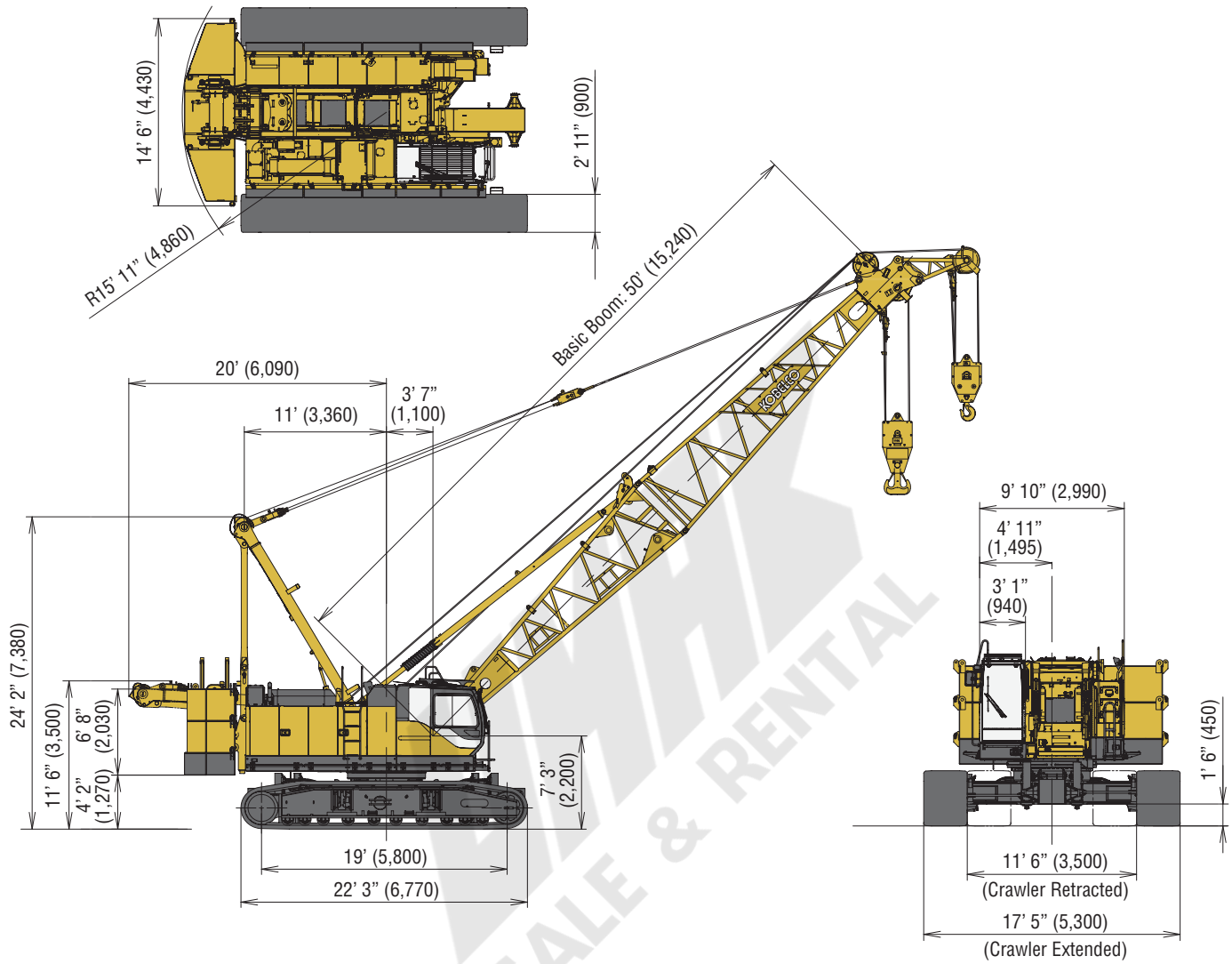
Main pumps	3 variable displacement
Max. Pressure	4,626 psi (31.9 MPa)
Hydraulic Tank Capacity	141.3 US gal. (535 liters)

Weight

Operating Weight	220,300 lbs (102 t)
Ground Pressure	13.6 psi (95.4 kPa)
Counterweight	76,300 lbs
Transport Weight	74,206 lbs

GENERAL DIMENSIONS

Unit: ft-in (mm)



BOOM AND JIB ARRANGEMENTS

Crane Boom Arrangements

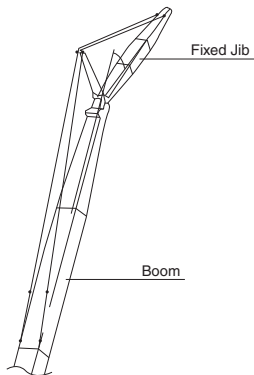
Boom length ft (m)	Boom arrangement
50 (15.2)	
60 (18.3)	※
70 (21.3)	※
80 (24.4)	※
90 (27.4)	※
100 (30.5)	※
110 (33.5)	※
120 (36.6)	※
130 (39.6)	※
140 (42.7)	※
150 (45.7)	※

Boom length ft (m)	Boom arrangement
160 (48.8)	※
170 (51.8)	※
180 (54.9)	※
190 (57.9)	※
200 (61.0)	※
210 (64.0)	※
220 (67.1)	※
230 (70.1)	※

Symbol	Boom Length	Remarks
	25.0 ft (7.6 m)	Boom Base
	25.0 ft (7.6 m)	Boom Top
	10.0 ft (3.1 m)	Insert Boom
	20.0 ft (6.1 m)	Insert Boom
	40.0 ft (12.2 m)	Insert Boom
	40.0 ft (12.2 m)	Insert Boom for Luffing

↗ mark shows the guy line installing position when the fixed jib is used.
 ※ indicates the most flexible combination of insert luffing booms, which can be modified to form all shorter luffing boom arrangements.

Fixed Jib Arrangements

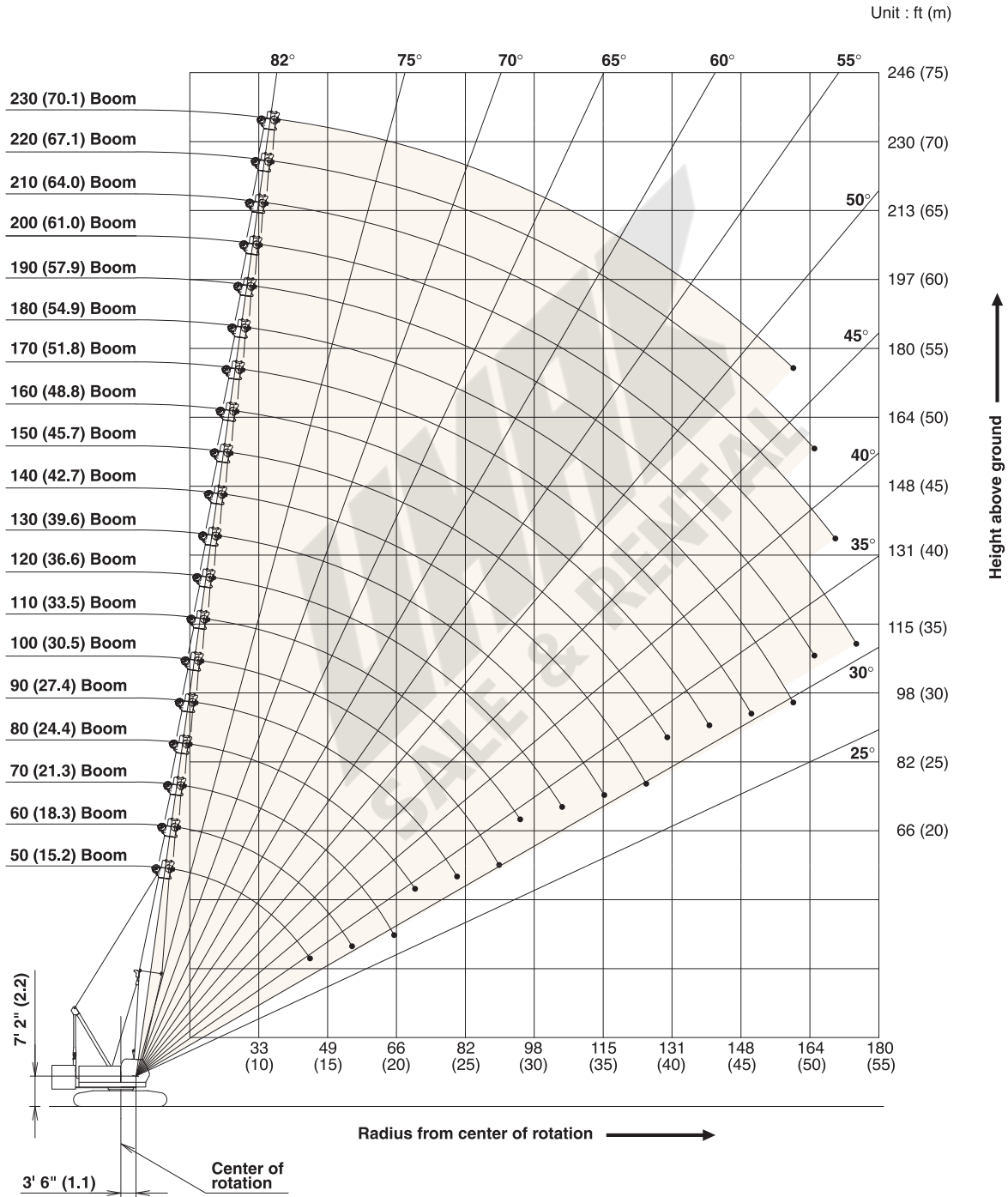


Crane boom length	Jib length ft (m)	Jib arrangement
90 ft (27.4 m) } 200 ft (61.0 m)	30 (9.1)	
	40 (12.2)	
	50 (15.2)	
	60 (18.3)	
	70 (21.3)	

Symbol	Jib Length	Remarks
	15 ft (4.6 m)	Jib Base
	15 ft (4.6 m)	Jib Top
	10 ft (3.0 m)	Insert Jib
	20 ft (6.1 m)	Insert Jib

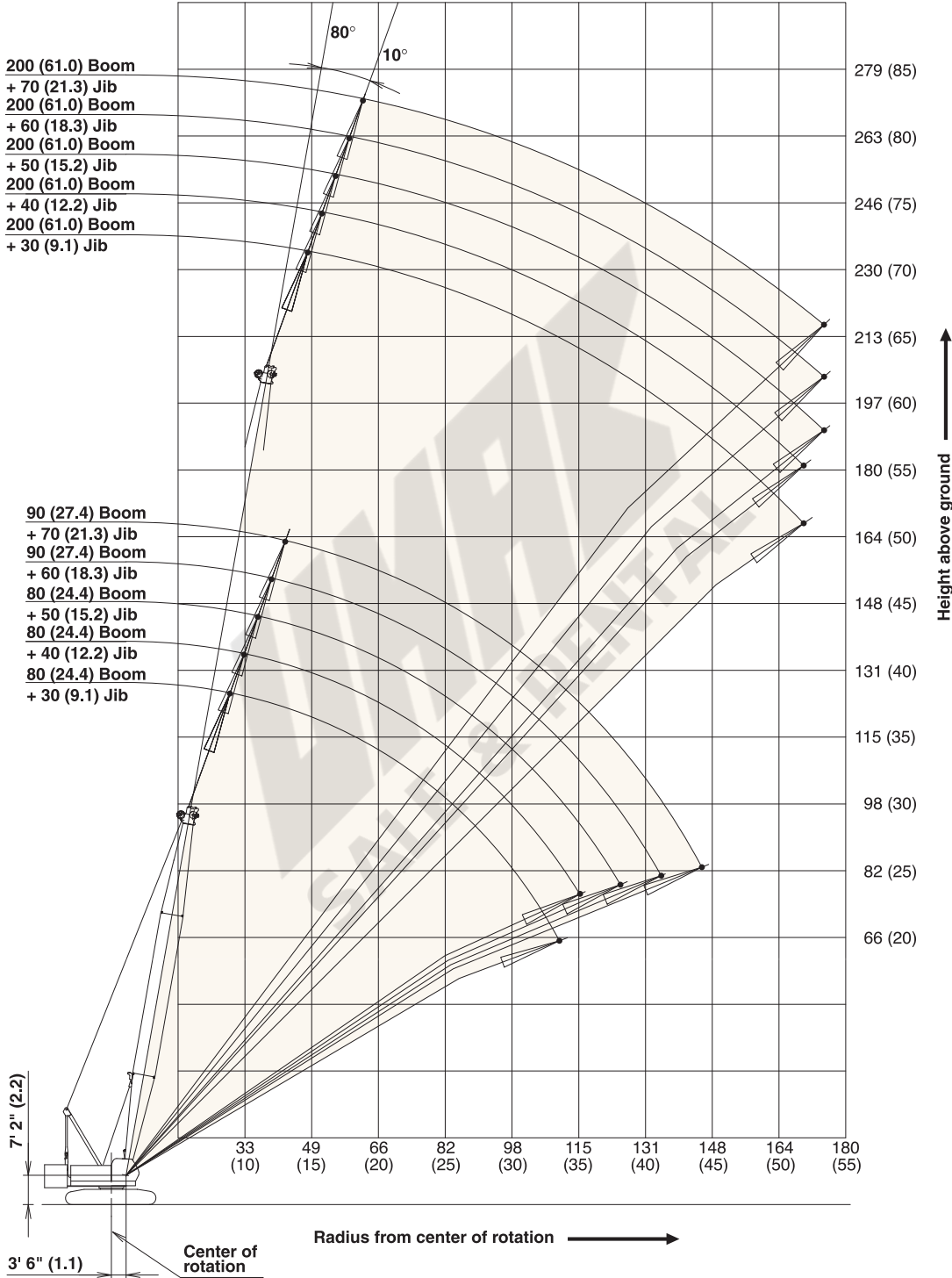
WORKING RANGES

Main Boom



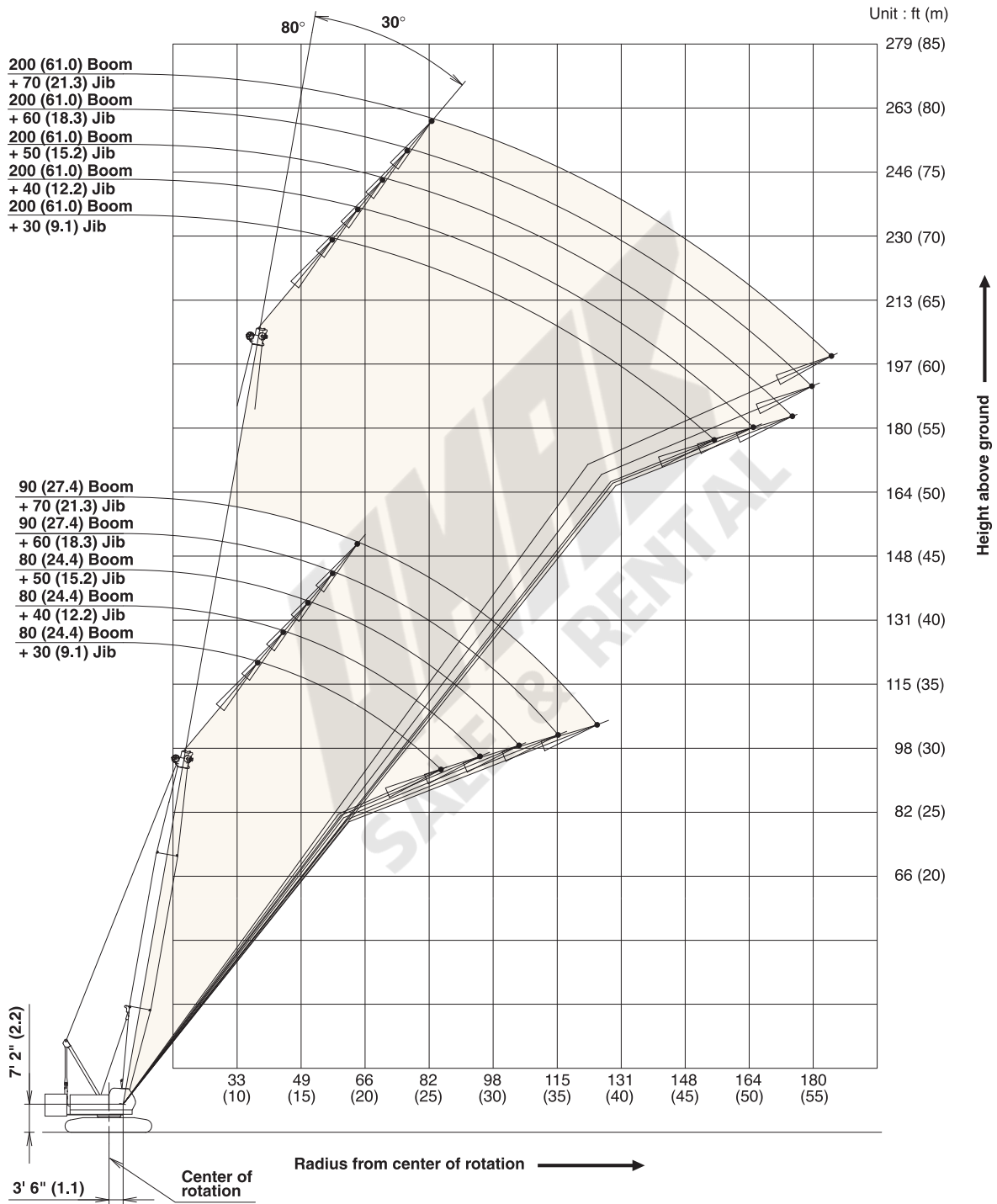
Fixed Jib 10°

Unit : ft (m)



WORKING RANGES

Fixed Jib 30°



SUPPLEMENTAL DATA

1. Rated loads included in the charts are the maximum allowable freely suspended loads at a given boom length, boom angle and load radius, and have been determined for the machine standing level on firm supporting surface under ideal operating conditions.

The user must limit or de-rate rated loads to allow for adverse conditions (such as soft or uneven ground, out-of-level conditions, wind, side loads, pendulum action, jerking or sudden stopping of loads, inexperience of personnel, multiple machine lifts, and traveling with a load).

2. Capacities do not exceed 75% of minimum tipping loads. Capacities based on factors other than machine stability such as structural competence are shown by asterisk * in the charts.

3. The machine must be reeved and set-up as stated in the operation manual and all the instruction manuals if these manuals are missing, obtain replacements.

- Boom backstops are required for all boom lengths.
- Gantry must be fully raised position for all operations.
- Crawlers must be fully extended and be locked in position.
- The crane must be leveled to within 1% on a firm supporting surface.

4. Do not attempt to lift where no ratings are shown as crane may tip or collapse.

5. Attempting to lift more than rated loads may cause machine to tip or collapse. Do not tip machine to determine capacity.

6. Weight of hooks, hook blocks, slings and other lifting devices are a part of the total load. Their total weight must be subtracted from the rated load to obtain the weight that can be lifted.

7. When lifting over boom point with jib or auxiliary sheave, rated loads for the boom must be deducted as shown below.

Jib length (ft)	Aux.	30'	40'	50'	60'	70'
Deduct (lbs)	700	2,400	3,200	4,200	5,200	6,200

8. The total load that can be lifted over a jib is limited by rated jib loads.

9. Boom lengths for jib mounting are 90 ft (27.4 m) to 200 ft (61.0 m).

10. Boom lengths that can attach auxiliary sheave are from 50 ft (15.2 m) to 220 ft (67.1 m).

11. The boom should be erected over the front of the crawlers, not laterally.

When erecting and lowering the boom at length of 200 ft (61.0 m) with jib, the blocks for erection must be placed at the end of the crawlers.

12. Least stable position is over the side.

13. Maximum hoist load for number of reeving parts of line for hoist rope.

Main Boom Hoist Loads

No. of Parts of Line	1	2	3	4	5
Maximum Loads (lbs)	25,000	50,000	75,000	100,000	125,000

No. of Parts of Line	6	7	8	9	10
Maximum Loads (lbs)	150,000	175,000	200,000	225,000	240,000

Jib Hoist Loads

No. of Parts of Line	1
Maximum Loads (lbs)	24,000

Auxiliary Hoist Loads

No. of Parts of Line	1	2
Maximum Loads (lbs)	25,000	50,000

14. Lifting capacities listed apply only to the machine as originally manufactured and designed by KOBELCO CRANES CO.,LTD. Modifications to this machine or use of equipment other than that specified can reduce operating capacity.

15. Designed and rated to comply with ANSI Code B30.5.

Operation of this equipment in excess of rated loads or disregard of instruction voids the warranty.

LIFTING CAPACITY



Crane Boom Lifting Capacity

Unit: lbs

Counterweight: 76,300 lbs, Carbody weight: 14,300 lbs

50' Boom			60' Boom			70' Boom			80' Boom			90' Boom		
Load Radius (ft)	Boom Angle (deg.)	360° Rated Load (lbs)	Load Radius (ft)	Boom Angle (deg.)	360° Rated Load (lbs)	Load Radius (ft)	Boom Angle (deg.)	360° Rated Load (lbs)	Load Radius (ft)	Boom Angle (deg.)	360° Rated Load (lbs)	Load Radius (ft)	Boom Angle (deg.)	360° Rated Load (lbs)
12.0	81.4	240,000 *	13.5	81.4	210,000 *	15.0	81.4	190,000 *	16.5	81.4	171,000 *	18.0	81.4	150,000 *
13.0	80.2	220,000 *	14.0	80.9	204,000 *	16.0	80.5	177,000 *	17.0	81.0	163,000 *	19.0	80.7	140,000 *
14.0	79.0	206,000 *	15.0	79.9	190,000 *	17.0	79.7	163,000 *	18.0	80.3	150,000 *	20.0	80.1	135,000 *
15.0	77.9	191,000 *	16.0	78.9	177,000 *	18.0	78.9	150,000 *	19.0	79.6	142,100 *	22.0	78.8	122,400 *
16.0	76.7	177,000 *	17.0	78.0	163,000 *	19.0	78.0	142,100 *	20.0	78.8	135,000 *	24.0	77.5	111,500
17.0	75.5	163,000 *	18.0	77.0	150,000 *	20.0	77.2	135,000 *	22.0	77.4	122,400 *	26.0	76.2	98,900
18.0	74.3	150,000 *	19.0	76.0	142,100 *	22.0	75.5	122,700 *	24.0	75.9	111,500	28.0	74.8	88,800
19.0	73.1	142,100 *	20.0	75.0	135,000 *	24.0	73.8	111,700	26.0	74.4	98,900	30.0	73.5	80,400
20.0	71.9	135,000 *	22.0	73.0	122,700 *	26.0	72.1	99,200	28.0	72.9	88,800	32.0	72.2	73,400
22.0	69.5	122,800 *	24.0	71.0	111,700	28.0	70.3	89,000	30.0	71.4	80,400	34.0	70.8	67,400
24.0	67.0	111,900	26.0	69.0	99,200	30.0	68.6	80,600	32.0	69.9	73,400	36.0	69.5	62,300
26.0	64.4	99,600	28.0	66.9	89,200	32.0	66.8	73,800	34.0	68.3	67,400	38.0	68.1	57,900
28.0	61.8	89,500	30.0	64.8	80,900	34.0	65.0	67,900	36.0	66.8	62,300	40.0	66.7	54,000
30.0	59.2	81,100	32.0	62.6	73,800	36.0	63.2	62,800	38.0	65.2	57,900	45.0	63.2	46,000
32.0	56.4	74,200	34.0	60.4	68,100	38.0	61.3	58,400	40.0	63.6	54,200	50.0	59.5	40,100
34.0	53.6	68,300	36.0	58.2	63,000	40.0	59.4	54,400	45.0	59.5	46,200	55.0	55.8	35,400
36.0	50.7	63,200	38.0	55.9	58,600	45.0	54.5	46,500	50.0	55.2	40,100	60.0	51.8	31,500
38.0	47.6	58,800	40.0	53.5	54,600	50.0	49.2	40,500	55.0	50.7	35,400	65.0	47.6	28,400
40.0	44.3	55,100	45.0	47.2	46,700	55.0	43.5	35,900	60.0	45.8	31,700	70.0	43.0	25,700
45.0	35.2	47,100	50.0	40.2	40,700	60.0	37.1	32,100	65.0	40.5	28,600	75.0	38.1	23,500
			55.0	31.9	36,100				70.0	34.6	26,000	80.0	32.5	21,600
Reeves		10	Reeves		9	Reeves		8	Reeves		7	Reeves		6
100' Boom			110' Boom			120' Boom			130' Boom			140' Boom		
Load Radius (ft)	Boom Angle (deg.)	360° Rated Load (lbs)	Load Radius (ft)	Boom Angle (deg.)	360° Rated Load (lbs)	Load Radius (ft)	Boom Angle (deg.)	360° Rated Load (lbs)	Load Radius (ft)	Boom Angle (deg.)	360° Rated Load (lbs)	Load Radius (ft)	Boom Angle (deg.)	360° Rated Load (lbs)
19.5	81.4	137,500 *	20.9	81.4	128,600 *	22.4	81.4	121,000 *	23.9	81.4	100,000 *	25.4	81.4	100,000 *
20.0	81.1	135,000 *	22.0	80.8	122,000 *	24.0	80.6	111,100	24.0	81.4	100,000 *	26.0	81.2	98,100
22.0	79.9	122,200 *	24.0	79.8	111,300	26.0	79.7	98,500	26.0	80.5	98,300	28.0	80.3	87,900
24.0	78.8	111,300	26.0	78.7	98,500	28.0	78.7	88,400	28.0	79.6	88,100	30.0	79.5	79,500
26.0	77.6	98,700	28.0	77.7	88,400	30.0	77.7	80,000	30.0	78.7	79,800	32.0	78.7	72,500
28.0	76.4	88,600	30.0	76.6	80,000	32.0	76.7	72,900	32.0	77.8	72,700	34.0	77.8	66,500
30.0	75.2	80,200	32.0	75.5	72,900	34.0	75.8	67,000	34.0	76.9	66,700	36.0	77.0	61,500
32.0	74.0	73,100	34.0	74.4	67,000	36.0	74.8	61,900	36.0	76.0	61,700	38.0	76.1	57,000
34.0	72.8	67,200	36.0	73.3	61,900	38.0	73.8	57,500	38.0	75.1	57,300	40.0	75.3	53,100
36.0	71.6	62,100	38.0	72.3	57,500	40.0	72.8	53,500	40.0	74.1	53,300	45.0	73.2	45,100
38.0	70.4	57,700	40.0	71.2	53,500	45.0	70.3	45,600	45.0	71.8	45,400	50.0	71.0	39,000
40.0	69.2	53,700	45.0	68.4	45,600	50.0	67.7	39,400	50.0	69.5	39,400	55.0	68.8	34,300
45.0	66.1	45,800	50.0	65.5	39,600	55.0	65.1	34,800	55.0	67.1	34,600	60.0	66.6	30,400
50.0	62.9	39,900	55.0	62.6	34,800	60.0	62.4	30,800	60.0	64.7	30,600	65.0	64.4	27,100
55.0	59.6	35,000	60.0	59.6	31,000	65.0	59.7	27,700	65.0	62.2	27,500	70.0	62.1	24,400
60.0	56.2	31,300	65.0	56.5	27,700	70.0	56.8	25,100	70.0	59.7	24,900	75.0	59.7	22,200
65.0	52.6	27,900	70.0	53.3	25,100	75.0	53.9	22,700	75.0	57.1	22,400	80.0	57.3	20,200
70.0	48.9	25,300	75.0	50.0	22,900	80.0	50.9	20,700	80.0	54.4	20,500	85.0	54.8	18,500
75.0	45.0	23,100	80.0	46.5	20,900	85.0	47.7	19,100	85.0	51.6	18,900	90.0	52.3	16,900
80.0	40.7	21,100	85.0	42.7	19,100	90.0	44.4	17,600	90.0	48.8	17,400	95.0	49.6	15,600
85.0	36.0	19,600	90.0	38.7	17,800	95.0	40.8	16,300	95.0	45.7	16,000	100.0	46.9	14,500
90.0	30.8	18,000	95.0	34.3	16,500	100.0	37.0	15,200	100.0	42.5	14,700	105.0	44.0	13,400
						105.0	32.8	14,100	105.0	39.1	13,800	110.0	40.9	12,500
									110.0	35.5	13,000	115.0	37.7	11,600
									115.0	31.4	12,100	120.0	34.1	11,000
												125.0	30.3	10,300
Reeves		6	Reeves		6	Reeves		5	Reeves		4	Reeves		4

Note: Designed and rated to comply with ANSI Code B30.5.

Capacities based on factors other than machine stability such as structural competence are shown by asterisk * in the charts.

Refer to notes P10.



Fixed Jib Lifting Capacity

Unit: lbs

Counterweight: 76,300 lbs, Carbody weight: 14,300 lbs

150' Boom

Load Radius (ft)	30 ft Jib				40 ft Jib				50 ft Jib				60 ft Jib				70 ft Jib				Load Radius (ft)
	Offset Angle (deg.)		Offset Angle (deg.)		Offset Angle (deg.)		Offset Angle (deg.)		Offset Angle (deg.)		Offset Angle (deg.)		Offset Angle (deg.)		Offset Angle (deg.)		Offset Angle (deg.)				
	10	30	10	30	10	30	10	30	10	30	10	30	10	30	10	30	10	30			
	Boom Angle (deg.)	Rated Load (lbs)	Boom Angle (deg.)	Rated Load (lbs)	Boom Angle (deg.)	Rated Load (lbs)	Boom Angle (deg.)	Rated Load (lbs)	Boom Angle (deg.)	Rated Load (lbs)	Boom Angle (deg.)	Rated Load (lbs)	Boom Angle (deg.)	Rated Load (lbs)	Boom Angle (deg.)	Rated Load (lbs)	Boom Angle (deg.)	Rated Load (lbs)	Boom Angle (deg.)	Rated Load (lbs)	
45	78.4	24,000*			79.6	24,000*														45	
50	76.8	24,000*	79.7	21,000*	78.0	24,000*			79.1	20,000*										50	
55	75.1	24,000*	78.0	21,000*	76.5	24,000*			77.6	20,000*										55	
60	73.5	24,000*	76.3	21,000*	74.9	24,000*	78.6	15,400*	76.2	20,000*										60	
65	71.8	24,000*	74.6	21,000*	73.3	24,000*	77.0	15,400*	74.7	20,000*										65	
70	70.1	24,000*	72.9	21,000*	71.7	24,000*	75.3	15,400*	73.2	20,000*	77.5	11,400*	74.5	18,000*	79.5	9,200*	75.6	14,900*	80.0	8,100*	70
75	68.4	22,200	71.2	21,000*	70.1	22,500	73.7	15,400*	71.6	20,000	76.0	11,400*	73.0	18,000*	78.1	9,200*	74.3	14,700	74.3	14,700	75
80	66.7	20,200	69.4	20,800	68.5	20,500	72.0	15,400*	70.1	20,000	74.4	11,400*	71.6	18,000*	76.6	9,200*	72.9	14,500	72.9	14,500	80
85	64.9	18,400	67.6	19,000	66.8	18,800	70.3	15,400*	68.5	19,000	72.8	11,400*	70.1	17,800	75.1	9,200*	71.5	14,300	77.1	14,300	85
90	63.1	16,900	65.8	17,500	65.2	17,200	68.6	15,100*	67.0	17,500	71.2	11,400*	68.6	16,900	73.5	9,200*	70.1	14,200	70.1	14,200	90
95	61.3	15,500	63.9	16,000	63.5	15,800	66.9	14,700*	65.4	16,000	69.5	11,400*	67.1	16,000	72.0	9,200*	68.7	14,000	74.2	14,000	95
100	59.4	14,300	62.0	14,700	61.7	14,600	65.1	14,300	63.8	14,800	67.9	11,300*	65.6	15,000	70.4	9,200*	67.2	13,400	67.2	13,400	100
105	57.5	13,200	60.1	13,600	60.0	13,500	63.3	14,000	62.1	13,700	66.2	11,000*	64.0	13,900	68.8	9,000*	65.8	12,800	71.2	12,800	105
110	55.6	12,300	58.1	12,600	58.2	12,500	61.4	13,000	60.5	12,700	64.5	10,700*	62.5	12,900	67.2	8,800*	64.3	12,300	64.3	12,300	110
115	53.6	11,300	56.1	11,700	56.4	11,600	59.6	12,100	58.8	11,800	62.7	10,400*	60.9	11,900	65.6	8,600*	62.8	11,700	68.1	11,700	115
120	51.6	10,500	54.0	10,800	54.5	10,800	57.6	11,200	57.0	11,000	60.9	10,200*	59.3	11,100	63.9	8,400*	61.3	11,200	61.3	11,200	120
125	49.5	9,800	51.8	10,100	52.6	10,000	55.6	10,400	55.2	10,200	59.1	10,000	57.6	10,400	62.2	8,200*	59.8	10,500	65.0	10,500	125
130	47.3	9,100			50.6	9,400	53.6	9,700	53.4	9,500	57.2	9,800	55.9	9,700	60.4	8,000*	58.2	9,800	63.3	6,700*	130
135	45.0	8,500			48.5	8,700			51.6	8,900	55.3	9,400	54.2	9,100	58.6	7,800*	56.6	9,200	61.6	9,200	135
140	42.7	7,900			46.4	8,100			49.7	8,300	53.3	8,700	52.5	8,400	56.8	7,700	54.9	8,500	59.9	6,400	140
145	40.2	7,400			44.2	7,600			47.7	7,800			50.7	7,900	54.9	7,500	53.3	8,000	58.2	6,300	145
150	37.6	6,900			42.0	7,100			45.6	7,300			48.8	7,400	52.9	7,400	51.6	7,500	56.4	6,200	150
155	34.8	6,500			39.5	6,700			43.5	6,800			46.9	6,900			49.8	7,000	54.5	6,100	155
160	31.8	6,000			37.0	6,200			41.3	6,400			44.9	6,500			48.0	6,600	52.6	5,900	160
165					34.3	5,800			38.9	6,000			42.8	6,100			46.1	6,200	50.6	5,800	165
170									36.4	5,500			40.6	5,700			44.2	5,800			170
175									33.8	5,100			38.3	5,300			42.1	5,400			175
180													35.9	4,900			40.0	5,000			180
185													33.3	4,500			37.8	4,600			185
190																	35.4	4,200			190
195																	32.9	3,900			195
Reeves	1		1		1		1		1		1		1		1		1		1		Reeves

160' Boom

Load Radius (ft)	30 ft Jib				40 ft Jib				50 ft Jib				60 ft Jib				70 ft Jib				Load Radius (ft)
	Offset Angle (deg.)		Offset Angle (deg.)		Offset Angle (deg.)		Offset Angle (deg.)		Offset Angle (deg.)		Offset Angle (deg.)		Offset Angle (deg.)		Offset Angle (deg.)		Offset Angle (deg.)				
	10	30	10	30	10	30	10	30	10	30	10	30	10	30	10	30	10	30			
	Boom Angle (deg.)	Rated Load (lbs)	Boom Angle (deg.)	Rated Load (lbs)	Boom Angle (deg.)	Rated Load (lbs)	Boom Angle (deg.)	Rated Load (lbs)	Boom Angle (deg.)	Rated Load (lbs)	Boom Angle (deg.)	Rated Load (lbs)	Boom Angle (deg.)	Rated Load (lbs)	Boom Angle (deg.)	Rated Load (lbs)	Boom Angle (deg.)	Rated Load (lbs)	Boom Angle (deg.)	Rated Load (lbs)	
45	79.0	24,000*																			45
50	77.5	24,000*			78.6	24,000*			79.6	20,000*											50
55	75.9	24,000*	78.7	21,000*	77.1	24,000*			78.2	20,000*											55
60	74.4	24,000*	77.1	21,000*	75.7	24,000*	79.2	15,400*	76.8	20,000*											60
65	72.8	24,000*	75.5	21,000*	74.2	24,000*	77.7	15,400*	75.4	20,000*											65
70	71.2	24,000*	73.9	21,000*	72.7	24,000*	76.1	15,400*	74.0	20,000*	78.2	11,400*	75.2	18,000*	78.6	9,200*	76.3	15,000*	77.6	15,200*	70
75	69.6	22,100	72.2	21,000*	71.1	22,400	74.6	15,400*	72.5	20,000*	76.7	11,400*	73.8	18,000*	78.6	9,200*	75.0	14,800	73.3	14,800	75
80	68.0	20,100	70.6	20,800	69.6	20,400	73.0	15,400*	71.1	20,000*	75.2	11,400*	72.4	18,000*	77.2	9,200*	73.7	14,600	79.1	8,100*	80
85	66.3	18,300	68.9	19,000	68.1	18,700	71.4	15,400*	69.6	18,900	73.7	11,400*	71.1	18,000*	75.8	9,200*	72.3	14,400	77.7	14,400	85
90	64.6	16,800	67.2	17,400	66.5	17,100	69.8	15,400*	68.1	17,400	72.2	11,400*	69.6	17,500	74.3	9,200*	71.0	14,300	76.3	8,100*	90
95	62.9	15,400	65.5	15,900	64.9	15,700	68.2	15,000*	66.6	15,900	70.6	11,400*	68.2	16,100	72.9	9,200*	69.7	14,100	75.0	14,100	95
100	61.2	14,200	63.7	14,700	63.3	14,500	66.5	14,600	65.1	14,700	69.1	11,400*	66.8	14,900	71.4	9,200*	68.3	13,900	73.5	8,000*	100
105	59.5	13,100	61.9	13,600	61.6	13,400	64.8	14,000	63.6	13,600	67.5	11,200*	65.3	13,800	69.9	9,200*	66.9	13,300	72.1	13,300	105
110	57.7	12,100	60.1	12,500	60.0	12,400	63.1	12,900	62.0	12,600	65.9	10,900*	63.9	12,800	68.4	9,000*	65.5	12,700	70.7	7,600*	110
115	55.8	11,200	58.2	11,600	58.3	11,500	61.4	11,900	60.4	11,700	64.2	10,600*	62.4	11,800	66.8	8,700*	64.1	11,900	69.2	7,400*	115
120	54.0	10,400	56.3	10,700	56.5	10,600	59.6	11,100	58.8	10,800	62.6	10,400*	60.9	11,000	65.3	8,500*	62.7	11,100	67.7	7,200*	120
125	52.1	9,700	54.3	10,000	54.8	9,900	57.8	10,300	57.2	10,100	60.9	10,200	59.3	10,200	63.7	8,300*	61.2	10,400	66.2	7,000*	125
130	50.1	9,000	52.3	9,300	53.0	9,200	55.9	9,600	55.5	9,400	59.1	9,900	57.7	9,600	62.1	8,200*	59.8	9,700	64.7	6,900*	130
135	48.0	8,400			51.1	8,600	54.0	9,000	53.8	8											

LIFTING CAPACITY



Fixed Jib Lifting Capacity

Unit: lbs

Counterweight: 76,300 lbs, Carbody weight: 14,300 lbs

Load Radius (ft)		170' Boom																Load Radius (ft)				
		30 ft Jib				40 ft Jib				50 ft Jib				60 ft Jib					70 ft Jib			
		Offset Angle (deg.)		Offset Angle (deg.)		Offset Angle (deg.)		Offset Angle (deg.)		Offset Angle (deg.)		Offset Angle (deg.)		Offset Angle (deg.)		Offset Angle (deg.)			Offset Angle (deg.)			
		10	30	10	30	10	30	10	30	10	30	10	30	10	30	10	30		10	30		
Boom Angle (deg.)	Rated Load (lbs)	Boom Angle (deg.)	Rated Load (lbs)	Boom Angle (deg.)	Rated Load (lbs)	Boom Angle (deg.)	Rated Load (lbs)	Boom Angle (deg.)	Rated Load (lbs)	Boom Angle (deg.)	Rated Load (lbs)	Boom Angle (deg.)	Rated Load (lbs)	Boom Angle (deg.)	Rated Load (lbs)	Boom Angle (deg.)	Rated Load (lbs)	Boom Angle (deg.)	Rated Load (lbs)			
45	79.6	24,000*																		45		
50	78.1	24,000*			79.2	24,000*														50		
55	76.7	24,000*	79.3	21,000*	77.8	24,000*			78.8	20,000*				79.7	18,000*					55		
60	75.2	24,000*	77.8	21,000*	76.4	24,000*	79.7	15,400*	77.4	20,000*				78.4	18,000*			79.3	15,500*	60		
65	73.7	24,000*	76.3	21,000*	74.9	24,000*	78.3	15,400*	76.1	20,000*				77.1	18,000*			78.1	15,300*	65		
70	72.2	24,000*	74.7	21,000*	73.5	24,000*	76.8	15,400*	74.7	20,000*	78.7	11,400*		75.9	18,000*			76.9	15,100*	70		
75	70.7	21,700	73.2	21,000*	72.1	22,100	75.4	15,400*	73.4	20,000*	77.3	11,400*		74.5	18,000*	79.2	9,200*	75.6	14,900	75		
80	69.1	19,700	71.6	20,500	70.6	20,100	73.9	15,400*	72.0	20,000*	75.9	11,400*		73.2	18,000*	77.8	9,200*	74.4	14,700	80		
85	67.6	18,000	70.0	18,700	69.2	18,300	72.4	15,400*	70.6	18,600	74.5	11,400*		71.9	18,000*	76.5	9,200*	73.1	14,500	85		
90	66.0	16,500	68.4	17,100	67.7	16,800	70.9	15,400*	69.2	17,000	73.1	11,400*		70.6	17,200	75.1	9,200*	71.8	14,300	90		
95	64.4	15,000	66.8	15,600	66.2	15,300	69.3	15,200*	67.8	15,600	71.6	11,400*		69.2	15,800	73.7	9,200*	70.6	14,200	95		
100	62.8	13,800	65.2	14,300	64.7	14,100	67.8	14,800	66.3	14,400	70.1	11,400*		67.9	14,500	72.3	9,200*	69.3	14,000	100		
105	61.2	12,800	63.5	13,200	63.1	13,000	66.2	13,700	64.9	13,300	68.6	11,300*		66.5	13,400	70.9	9,200*	68.0	13,600	105		
110	59.5	11,800	61.8	12,200	61.6	12,100	64.6	12,600	63.4	12,300	67.1	11,100*		65.1	12,500	69.5	9,100*	66.6	12,600	110		
115	57.8	10,900	60.1	11,200	60.0	11,100	63.0	11,700	61.9	11,300	65.6	10,800*		63.7	11,500	68.0	8,900*	65.3	11,600	115		
120	56.1	10,000	58.3	10,400	58.4	10,300	61.3	10,800	60.4	10,500	64.0	10,600	62.3	10,700	66.5	8,700*	63.9	10,800	63.9	10,800	120	
125	54.3	9,300	56.5	9,700	56.7	9,600	59.6	10,000	58.9	9,800	62.4	10,400	60.8	9,900	65.0	8,500*	62.6	10,000	62.4	10,000	125	
130	52.5	8,700	54.6	8,900	55.0	8,900	57.9	9,300	57.3	9,100	60.8	9,600	59.3	9,200	63.5	8,300*	61.2	9,300	61.2	9,300	130	
135	50.6	8,000	52.7	8,300	53.3	8,300	56.1	8,700	55.7	8,400	59.2	9,000	57.8	8,600	62.0	8,100*	59.8	8,700	60.6	8,700	135	
140	48.7	7,400			51.6	7,600	54.3	8,000	54.1	7,800	57.5	8,300	56.3	8,000	60.4	8,000	58.3	8,100	58.3	8,100	140	
145	46.7	6,900			49.7	7,100	52.4	7,400	52.4	7,300	55.7	7,700	54.8	7,400	58.8	7,800	56.9	7,500	56.9	7,500	145	
150	44.7	6,400			47.9	6,600			50.7	6,800	54.0	7,200	53.2	6,900	57.1	7,400	55.4	7,000	55.4	7,000	150	
155	42.6	5,800			46.0	6,100			48.9	6,300	52.1	6,700	51.5	6,500	55.4	6,900	53.9	6,600	53.9	6,600	155	
160	40.3	5,300			44.0	5,500			47.1	5,800			49.9	5,900	53.7	6,400	52.3	6,100	52.3	6,100	160	
165	38.0	4,800			41.9	5,100			45.2	5,300			48.2	5,500	51.9	6,000	50.7	5,600	50.7	5,600	165	
170	35.5	4,400			39.7	4,600			43.3	4,800			46.4	5,000			49.1	5,100	49.1	5,100	170	
175	32.9	4,000			37.5	4,200			41.3	4,400			44.6	4,600			47.4	4,700	47.4	4,700	175	
180					35.1	3,800			39.2	4,000			42.7	4,200			45.7	4,300	45.7	4,300	180	
185					32.5	3,400			36.9	3,600			40.7	3,800			43.9	3,900	43.9	3,900	185	
190									34.6	3,300			38.6	3,400			42.1	3,500	42.1	3,500	190	
Reeves	1		1		1		1		1		1		1		1		1		1		1	Reeves

Load Radius (ft)		180' Boom																Load Radius (ft)					
		30 ft Jib				40 ft Jib				50 ft Jib				60 ft Jib					70 ft Jib				
		Offset Angle (deg.)		Offset Angle (deg.)		Offset Angle (deg.)		Offset Angle (deg.)		Offset Angle (deg.)		Offset Angle (deg.)		Offset Angle (deg.)		Offset Angle (deg.)			Offset Angle (deg.)				
		10	30	10	30	10	30	10	30	10	30	10	30	10	30	10	30		10	30			
Boom Angle (deg.)	Rated Load (lbs)	Boom Angle (deg.)	Rated Load (lbs)	Boom Angle (deg.)	Rated Load (lbs)	Boom Angle (deg.)	Rated Load (lbs)	Boom Angle (deg.)	Rated Load (lbs)	Boom Angle (deg.)	Rated Load (lbs)	Boom Angle (deg.)	Rated Load (lbs)	Boom Angle (deg.)	Rated Load (lbs)	Boom Angle (deg.)	Rated Load (lbs)	Boom Angle (deg.)	Rated Load (lbs)	Boom Angle (deg.)	Rated Load (lbs)		
50	78.7	24,000*			79.7	24,000*																50	
55	77.3	24,000*	79.8	21,000*	78.3	24,000*					79.3	20,000*										55	
60	75.9	24,000*	78.4	21,000*	77.0	24,000*			78.0	20,000*				78.9	18,000*			79.8	15,600*			60	
65	74.5	24,000*	77.0	21,000*	75.7	24,000*	78.8	15,400*	76.7	20,000*				77.7	18,000*			78.6	15,400*			65	
70	73.1	23,900	75.5	21,000*	74.3	24,000*	77.5	15,400*	75.4	20,000*				76.5	18,000*			77.4	15,200*			70	
75	71.6	21,400	74.0	21,000*	72.9	21,800	76.1	15,400*	74.1	20,000*	77.9	11,400*		75.2	18,000*	79.7	9,200*	76.2	15,000			75	
80	70.2	19,500	72.6	20,200	71.6	19,800	74.7	15,400*	72.8	20,000*	76.6	11,400*		74.0	18,000*	78.4	9,200*	75.0	14,800	80.0	8,100*	80	
85	68.7	17,700	71.1	18,400	70.2	18,000	73.2	15,400*	71.5	18,300	75.2	11,400*		72.7	18,000*	77.1	9,200*	73.8	14,600	78.8	8,100*	85	
90	67.2	16,200	69.6	16,800	68.8	16,500	71.8	15,400*	70.2	16,800	73.9	11,400*		71.4	17,000	75.8	9,200*	72.6	14,400	77.5	8,100*	90	
95	65.7	14,700	68.0	15,400	67.3	15,100	70.4	15,400*	68.8	15,300	72.5	11,400*		70.2	15,500	74.5	9,200*	71.4	14,300	76.3	8,100*	95	
100	64.2	13,600	66.5	14,100	65.9	13,800	68.9	14,600	67.4	14,100	71.1	11,400*		68.9	14,300	73.1	9,200*	70.1	14,100	75.0	8,100*	100	
105	62.7	12,500	64.9	13,000	64.5	12,800	67.4	13,400	66.1	13,000	69.7	11,400*		67.5	13,200	71.8	9,200*	68.9	13,300	73.7	8,000*	105	
110	61.1	11,500	63.3	12,000	63.0	11,800	65.9	12,400	64.7	12,000	68.3	11,300*		66.2	12,200	70.4	9,200*	67.6	12,300	72.4	7,800*	110	
115	59.5	10,600	61.7	11,000	61.5	10,800	64.4	11,400	63.3	11,000	66.8	11,000*		64.9	11,200	69.0	9,000*	66.4	11,300	71.1	7,600*	115	
120	57.9	9,800	60.1	10,200	60.0	10,000	62.8	10,600	61.8	10,200	65.3	10,800	63.5	10,400	67.7	8,800*	65.1	10,500	64.6	10,500	69.8	7,400*	120
125	56.3	9,000	58.4	9,400	58.4	9,300	61.2	9,800	60.4	9,500	63.8	10,100	62.2	9,600	66.2	8,600*	63.8	9,700	63.8	9,700	68.4	7,200*	125
130	54.6	8,300	56.7	8,700	56.9	8,600	59.6	9,100	58.9	8,800	62.3	9,400	60.8	8,900	64.8	8,400*	62.5	9,100	62.5	9,100	67.1	7,100*	130
135	52.9	7,700	54.9	8,000	55.3	8,000	58.0	8,400	57.4	8,200	60.8	8,700	59.4	8,300	63.4	8,300	61.1	8,400	61.1	8,400	65.7	6,900*	135
140	51.1	7,100	53.1	7,400	53.6	7,300	56.3	7,700	55.9	7,500	59.2	8,100	57.9	7,700	61.9	8,100	59.8	7,800	59.8	7,800	64.3	6,800	140
145	49.3	6,500	51.2	6,900	52.0	6,800	54.6	7,200	54.3	7,000	57.6	7,500	56.5	7,100	60.4	7,800	58.4	7,200	58.4	7,200	62.9	6,600	145
150	47.4	5,900			50.3	6,200	52.8	6,700	52.8	6,500	56.0	6,900	55.0	6,600	58.8	7,200	57.0	6,700	57.0	6,700	61.4	6,500	150
155	45.5	5,400			48.5	5,700			51.1	5,900	54.3	6,400	53.5	6,100	57.2	6,700	55.6	6,300	55.6	6,300	59.9	6,400	155
160	43.5	4,900			46.7	5,100			49.5	5,400	52.5	5,900	51.9	5,500	55.6	6,200	54.1	5,700	54.1	5,700	58.4	6,300	160
165	41.5	4,400			44.8	4,700			47.7	4,900			50.3	5,100	54.0	5,700	52.7	5,200	52.7	5,200	56.9	6,000	165
170	39.3	4,000			42.9	4,200			46.0	4,40													



Fixed Jib Lifting Capacity

Unit: lbs

Counterweight: 76,300 lbs, Carbody weight: 14,300 lbs

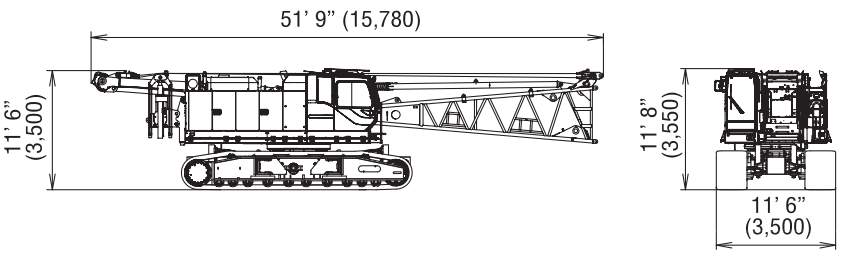
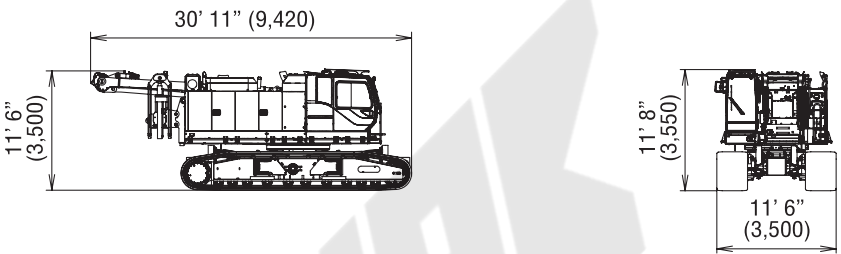
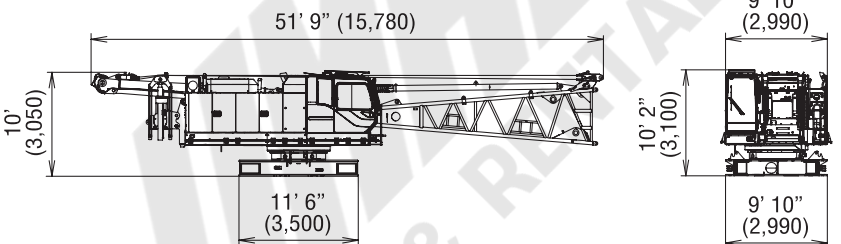
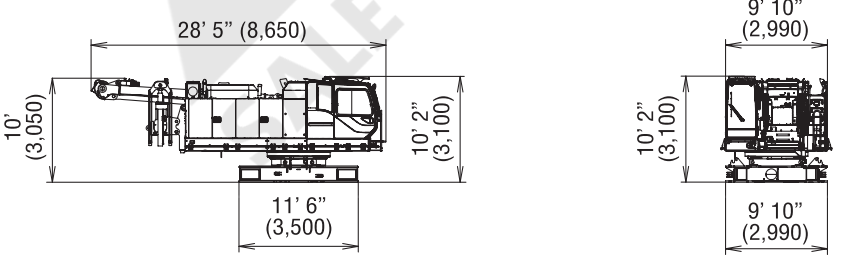
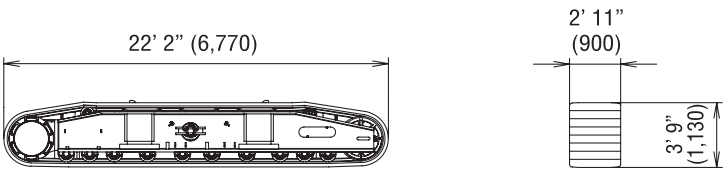
190' Boom

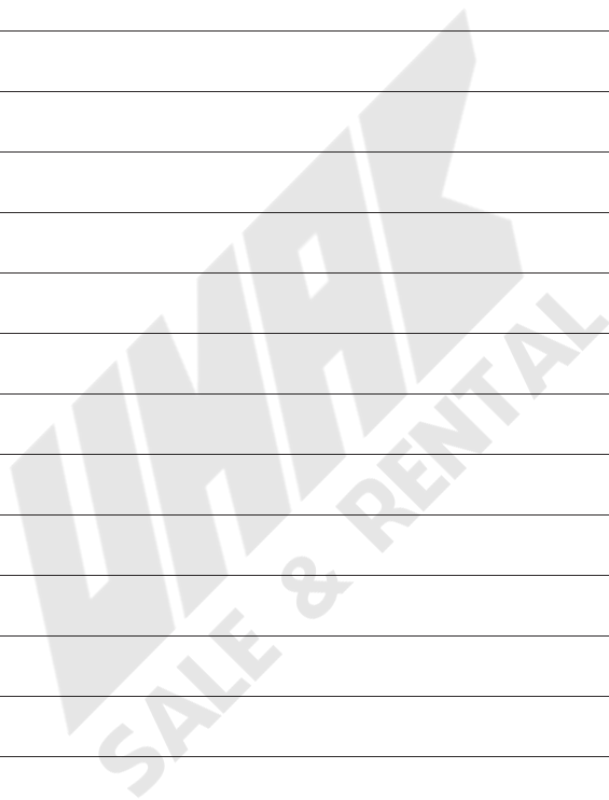
Load Radius (ft)	30 ft Jib				40 ft Jib				50 ft Jib				60 ft Jib				70 ft Jib				Load Radius (ft)	
	Offset Angle (deg.)		Offset Angle (deg.)		Offset Angle (deg.)		Offset Angle (deg.)		Offset Angle (deg.)		Offset Angle (deg.)		Offset Angle (deg.)		Offset Angle (deg.)		Offset Angle (deg.)					
	10	30	10	30	10	30	10	30	10	30	10	30	10	30	10	30	10	30				
	Boom Angle (deg.)	Rated Load (lbs)	Boom Angle (deg.)	Rated Load (lbs)	Boom Angle (deg.)	Rated Load (lbs)	Boom Angle (deg.)	Rated Load (lbs)	Boom Angle (deg.)	Rated Load (lbs)	Boom Angle (deg.)	Rated Load (lbs)	Boom Angle (deg.)	Rated Load (lbs)	Boom Angle (deg.)	Rated Load (lbs)	Boom Angle (deg.)	Rated Load (lbs)	Boom Angle (deg.)	Rated Load (lbs)		
50	79.2	24,000*			78.9	24,000*			79.7	20,000*										50		
55	77.9	24,000*																			55	
60	76.6	24,000*	78.9	21,000*	77.6	24,000*			78.5	20,000*			79.4	18,000*						60		
65	75.2	24,000*	77.6	21,000*	76.3	24,000*	79.4	15,400*	77.3	20,000*			78.2	18,000*			79.0	15,400*		65		
70	73.9	23,600*	76.2	21,000*	75.0	24,000*	78.0	15,400*	76.0	20,000*	79.7	11,400*					77.9	15,200*		70		
75	72.5	21,100	74.8	21,000*	73.7	21,500	76.7	15,400*	74.8	20,000*	78.5	11,400*	75.8	18,000*			76.8	15,000		75		
80	71.1	19,100	73.4	19,900	72.4	19,500	75.4	15,400*	73.6	19,800	77.2	11,400*	74.6	18,000*	78.9	9,200*	75.6	14,900	80.4	8,100*	80	
85	69.7	17,400	72.0	18,100	71.1	17,700	74.0	15,400*	72.3	18,000	75.9	11,400*	73.4	18,000*	77.6	9,200*	74.5	14,700	79.2	8,100*	85	
90	68.3	15,800	70.6	16,600	69.7	16,200	72.7	15,400*	71.0	16,400	74.6	11,400*	72.2	16,700	76.4	9,200*	73.3	14,500	78.0	8,100*	90	
95	66.9	14,400	69.1	15,100	68.4	14,700	71.3	15,400*	69.7	15,000	73.3	11,400*	71.0	15,200	75.1	9,200*	72.1	14,300	76.8	8,100*	95	
100	65.5	13,200	67.7	13,800	67.0	13,500	69.9	14,300	68.5	13,800	72.0	11,400*	69.8	13,900	73.9	9,200*	71.0	14,100	75.6	8,100*	100	
105	64.0	12,100	66.2	12,700	65.7	12,400	68.5	13,200	67.1	12,600	70.6	11,400*	68.5	12,800	72.6	9,200*	69.8	13,000	74.4	8,100*	105	
110	62.5	11,100	64.7	11,600	64.3	11,400	67.1	12,100	65.8	11,700	69.3	11,400*	67.3	11,800	71.3	9,200*	68.6	12,000	73.2	7,900*	110	
115	61.1	10,200	63.2	10,700	62.9	10,500	65.6	11,100	64.5	10,700	67.9	11,200*	66.0	10,900	70.0	9,100*	67.4	11,000	71.9	7,700*	115	
120	59.5	9,400	61.6	9,800	61.4	9,700	64.2	10,200	63.1	9,900	66.5	10,600	64.7	10,000	68.7	8,900*	66.1	10,200	70.7	7,500*	120	
125	58.0	8,700	60.1	9,100	60.0	8,900	62.7	9,500	61.8	9,100	65.1	9,800	63.4	9,300	67.3	8,700*	64.9	9,400	69.4	7,400*	125	
130	56.4	8,000	58.5	8,300	58.5	8,200	61.2	8,700	60.4	8,400	63.7	9,100	62.1	8,600	66.0	8,500*	63.6	8,700	68.1	7,200*	130	
135	54.8	7,400	56.8	7,700	57.0	7,600	59.6	8,100	59.0	7,800	62.2	8,400	60.7	8,000	64.6	8,400	62.4	8,100	66.8	7,000	135	
140	53.2	6,700	55.2	7,000	55.5	7,000	58.1	7,400	57.5	7,200	60.8	7,800	59.4	7,300	63.2	8,000	61.1	7,400	65.5	6,900	140	
145	51.5	6,000	53.4	6,400	53.9	6,300	56.5	6,900	56.1	6,600	59.2	7,200	58.0	6,800	61.8	7,500	59.8	6,900	64.1	6,700	145	
150	49.8	5,400	51.7	5,800	52.3	5,700	54.8	6,200	54.6	6,000	57.7	6,600	56.6	6,200	60.3	6,900	58.5	6,300	62.8	6,600	150	
155	48.1	4,900			50.7	5,200	53.2	5,600	53.1	5,400	56.1	6,100	55.2	5,600	58.9	6,400	57.1	5,800	61.4	6,500	155	
160	46.3	4,400			49.0	4,600			51.5	4,900	54.5	5,400	53.8	5,100	57.4	5,800	55.8	5,200	60.0	6,100	160	
165	44.4	3,900			47.3	4,200			49.9	4,400	52.9	4,900	52.3	4,600	55.8	5,300	54.4	4,700	58.5	5,600	165	
170	42.5	3,400			45.6	3,700			48.3	3,900			50.8	4,100	54.3	4,800	53.0	4,200	57.0	5,100	170	
175					43.7	3,300			46.6	3,500			49.2	3,700	52.6	4,300	51.5	3,800	55.5	4,600	175	
180														47.6	3,300			50.0	3,400	54.0	4,100	180
185																				52.4	3,700	185
190																				50.8	3,300	190
Reeves	1		1		1		1		1		1		1		1		1		1		1	Reeves

200' Boom

Load Radius (ft)	30 ft Jib				40 ft Jib				50 ft Jib				60 ft Jib				70 ft Jib				Load Radius (ft)	
	Offset Angle (deg.)		Offset Angle (deg.)		Offset Angle (deg.)		Offset Angle (deg.)		Offset Angle (deg.)		Offset Angle (deg.)		Offset Angle (deg.)		Offset Angle (deg.)		Offset Angle (deg.)					
	10	30	10	30	10	30	10	30	10	30	10	30	10	30	10	30	10	30				
	Boom Angle (deg.)	Rated Load (lbs)	Boom Angle (deg.)	Rated Load (lbs)	Boom Angle (deg.)	Rated Load (lbs)	Boom Angle (deg.)	Rated Load (lbs)	Boom Angle (deg.)	Rated Load (lbs)	Boom Angle (deg.)	Rated Load (lbs)	Boom Angle (deg.)	Rated Load (lbs)	Boom Angle (deg.)	Rated Load (lbs)	Boom Angle (deg.)	Rated Load (lbs)	Boom Angle (deg.)	Rated Load (lbs)		
50	79.7	24,000*			79.3	24,000*															50	
55	78.4	24,000*																				55
60	77.2	24,000*	79.4	21,000*	78.1	24,000*			79.0	20,000*			79.8	18,000*					80.5	15,700*		60
65	75.9	24,000*	78.1	21,000*	76.9	24,000*	79.8	15,400*	77.8	20,000*			78.7	18,000*			79.5	15,500*		65		
70	74.6	23,500	76.8	21,000*	75.6	23,900	78.6	15,400*	76.6	20,000*			77.5	18,000*			78.4	15,300*		70		
75	73.3	21,000	75.5	21,000*	74.4	21,400	77.3	15,400*	75.4	20,000*	79.0	11,400*	76.4	18,000*			77.3	15,100		75		
80	72.0	19,000	74.2	19,900	73.1	19,400	76.0	15,400*	74.2	19,700	77.7	11,400*	75.2	18,000*	79.3	9,200*	76.2	14,900		80		
85	70.6	17,300	72.8	18,100	71.9	17,600	74.7	15,400*	73.0	17,900	76.5	11,400*	74.1	18,000*	78.1	9,200*	75.1	14,800	79.7	8,100*	85	
90	69.3	15,800	71.5	16,500	70.6	16,100	73.4	15,400*	71.8	16,400	75.3	11,400*	72.9	16,600	76.9	9,200*	73.9	14,600	78.5	8,100*	90	
95	68.0	14,300	70.1	15,000	69.3	14,600	72.1	15,400*	70.6	14,900	74.0	11,400*	71.8	15,100	75.8	9,200*	72.8	14,400	77.4	8,100*	95	
100	66.6	13,100	68.7	13,700	68.0	13,400	70.8	14,200	69.4	13,600	72.7	11,400*	70.6	13,800	74.5	9,200*	71.7	14,000	76.2	8,100*	100	
105	65.2	12,000	67.3	12,600	66.7	12,300	69.5	13,100	68.1	12,500	71.5	11,400*	69.4	12,700	73.3	9,200*	70.6	12,900	75.0	8,100*	105	
110	63.8	11,000	65.9	11,600	65.4	11,300	68.1	12,000	66.9	11,500	70.2	11,400*	68.2	11,700	72.1	9,200*	69.4	11,900	73.9	8,000*	110	
115	62.4	10,100	64.5	10,600	64.1	10,400	66.8	11,000	65.6	10,600	68.9	11,300*	67.0	10,800	70.8	9,200*	68.3	10,900	72.7	7,800*	115	
120	61.0	9,300	63.0	9,700	62.7	9,600	65.4	10,200	64.3	9,800	67.6	10,600	65.8	9,900	69.6	9,100*	67.1	10,000	71.5	7,600*	120	
125	59.6	8,500	61.6	9,000	61.4	8,800	64.0	9,400	63.0	9,000	66.2	9,800	64.5	9,200	68.3	8,900*	65.9	9,300	70.3	7,400*	125	
130	58.1	7,900	60.1	8,300	60.0	8,100	62.6	8,700	61.7	8,300	64.9	9,000	63.3	8,500	67.0	8,700*	64.7	8,600	69.0	7,300*	130	
135	56.6	7,200	58.5	7,600	58.6	7,500	61.1	8,000	60.4	7,700	63.5	8,300	62.0	7,800	65							

TRANSPORTATION PLAN

Name	Dimension ft-in (mm)	Weight lbs (kg)
Base Machine <ul style="list-style-type: none"> • Boom base • Gantry • Crawler • Wire rope (Front / boom hoist) 		126,808 (57,520)
Base Machine <ul style="list-style-type: none"> • Gantry • Crawler • Wire rope (Front / rear / boom hoist) 		119,489 (54,200)
Base Machine <ul style="list-style-type: none"> • Boom base • Gantry • Wire rope (Front / rear / boom hoist) • Without crawler 		74,206 (33,660)
Base Machine <ul style="list-style-type: none"> • Gantry • Wire rope (Front / rear / boom hoist) • Without Crawler 		66,887 (30,340)
Crawler		26,301 (11,930)

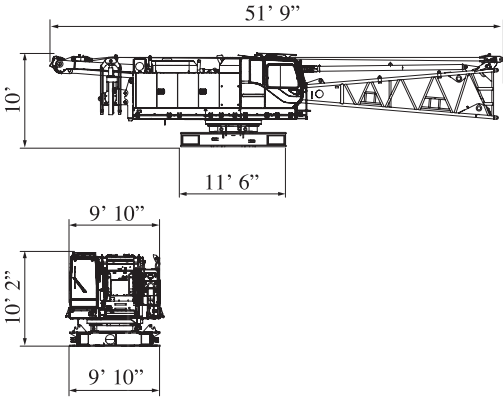


PARTS AND ATTACHMENTS

Dimensions: ft Weight: lbs

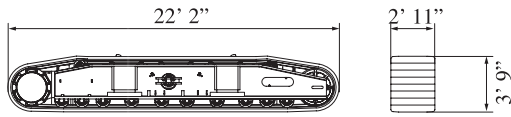
Base Machine

Boom Base, Gantry, Wire rope (Front/rear/boom hoist),
Without crawler
Weight: 74,206 lbs Width: 9' 10"



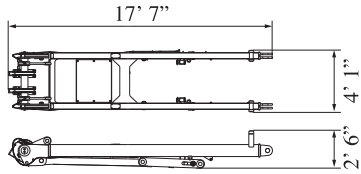
Crawler

Weight: 26,301 lbs



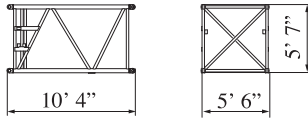
Gantry

Weight: 2,910 lbs



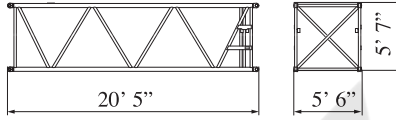
10 ft Insert Boom

Weight: 840 lbs



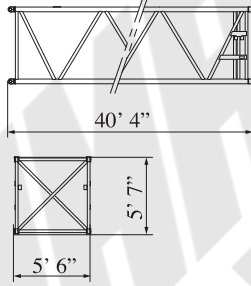
20 ft Insert Boom

Weight: 1,445 lbs



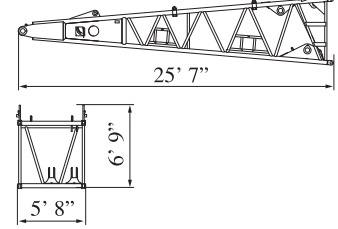
40 ft Insert Boom

Weight: 2,635 lbs



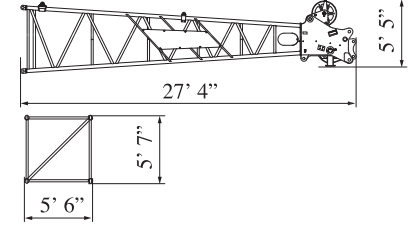
Boom Base

Weight: 4,930 lbs



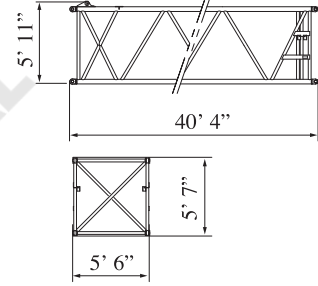
Boom Tip

Weight: 3,360 lbs



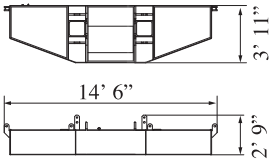
40 ft Insert Boom with lug

Weight: 2,690 lbs



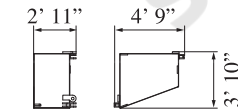
Counterweight No.1

Weight: 25,573 lbs



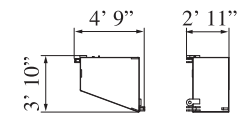
Counterweight No.2, No.3 (R)

Weight: 12,676 lbs



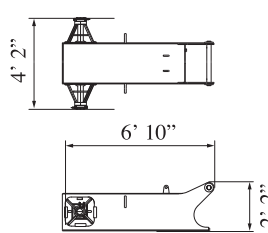
Counterweight No.2, No.3 (L)

Weight: 12,676 lbs



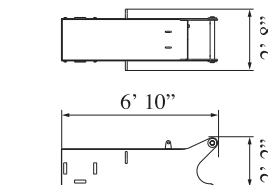
Carbodyweight (with float)

Weight: 7,319 lbs x 1 piece



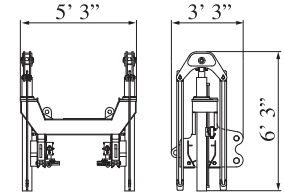
Carbodyweight (without float)

Weight: 7,165 lbs x 1 piece



Self removal unit

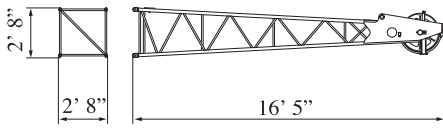
Weight: 1,918 lbs



Dimensions: ft Weight: lbs

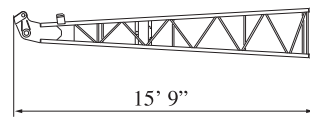
Jib Tip

Weight: 620 lbs



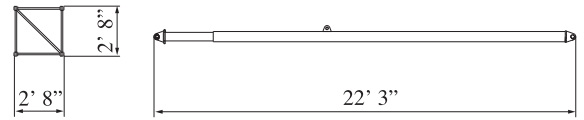
Jib Base

Weight: 440 lbs



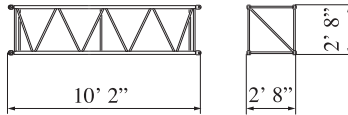
Backstop

Weight: 970 lbs (each)



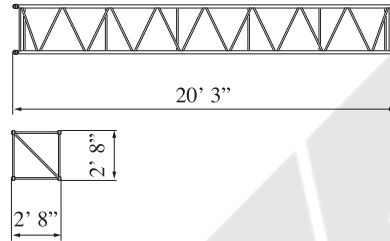
10 ft Insert Jib

Weight: 220 lbs



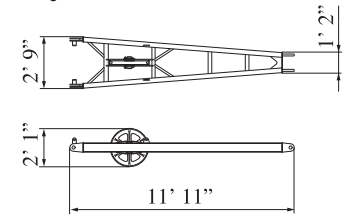
20 ft Insert Jib

Weight: 400 lbs



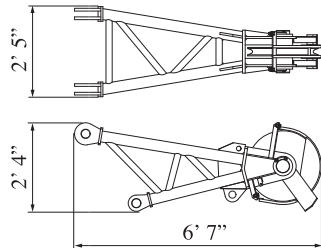
Jib Strut

Weight: 550 lbs



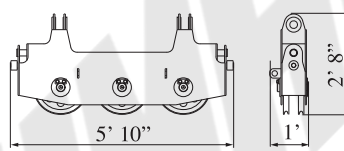
Auxiliary Sheave

Weight: 660 lbs



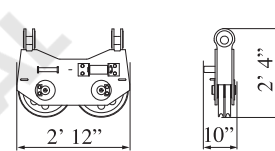
Upper Spreader

Weight: 660 lbs



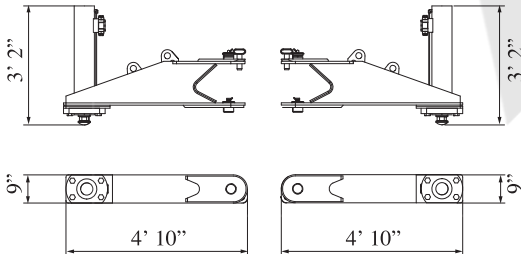
Lower Spreader

Weight: 440 lbs



Translifter

Weight: 705 lbs x 1 piece



WMA
SALE & RENTAL

Note: This catalog may contain photographs of machines with specifications, attachments and optional equipment not certified for operation in your country. Please consult KOBELCO for those items you may require. Due to our policy of continual product improvements all designs and specifications are subject to change without advance notice.

Copyright by KOBELCO CRANES CO., LTD. No part of this catalog may be reproduced in any manner without notice.

KOBELCO CRANES CO., LTD.

17-1, Higashigotanda 2-chome, Shinagawa-ku, Tokyo 141-8626 JAPAN

Tel: +81-3-5789-2130 Fax: +81-3-5789-3372

URL: <http://www.kobelco-cranes.com/>

Inquiries To :

KOBELCO CRANES NORTH AMERICA, INC.

10845 Train Court, Houston, Texas 77041, USA

Tel: +1-713-856-5755 Fax: +1-713-856-9072

URL: <http://www.kobelcocranesnorthamerica.com/>