

# KA-1300sL



▲ Front



▲ Rear



▲ Right side



▲ Left side

\*Traveling position in working site

<http://www.kato-works.co.jp>

- Study and follow the local regulation for driving position regarding mounting of Superstructure, Boom, Fly jib and Counter weight.
- Before you use the crane, study the instruction manual thoroughly and follow the instructions it contains.
- Some differences may arise between the machine delivered and the photographs in the catalog due to the country the crane will be used in or any added improvements.
- Note : The specification may be changed without notice.
- The actual colors of the body and interior may appear slightly different from those shown in this catalogue due to the limitations of photography and printing.

● Contact for enquiry:



**KA-1300sL**

9-37, Higashi-ohi 1-chome, Shinagawa-ku, Tokyo, 140-0011, Japan / Tel.: Head Office: Tokyo (03) 3458-1111 Overseas Marketing Department: Tokyo (03) 3458-1115 / FAX: Tokyo (03) 3458-1163

# ALLTERR KA-1300sL



\*Traveling position in working site

**KATO**



# The latest carrier based on over 4 decades of KATO's Carrier engineering history.



- High efficient and intelligent Unit injector system maximizes the engine performance.
- The engine fully complies with Euro 3 exhaust gas emission.

■ Max output	390kW/1800min <sup>-1</sup>
■ Max torque	2400N·m/1080min <sup>-1</sup>

### High maneuverable 5-Axles all wheels steering system.

- "Crab Steering Operation" or "Counter Steering Operation" can be easily selected by simple switch in the cabin for confined working site.
- The Width of theoretical minimum intersecting aisle ..... **7.05m**  
(The traveling position in working site)

### Fully hydraulic suspension systems enable appropriate weight balance.

### High capacity auxiliary brake system

- "Hydraulic retarder, Engine exhaust brake & Engine decompression brake system are equipped, which are very powerful and useful especially at long downhill driving.
- Fully air controlled Disk brake is equipped on all wheels, offers easier maintenance and less maintenance cost & time.

Full size cabin  
Roomy and comfortable in addition to wide driving visibility. ▼



Convenient temporary sleeping bed is installed ▼

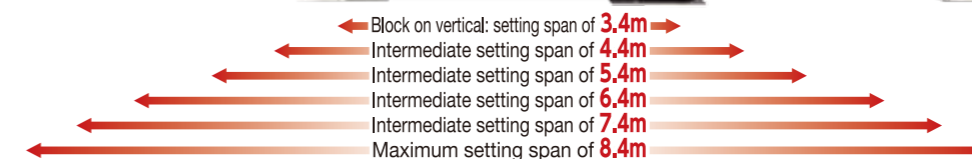


▲ The instruments for driver include touch-screen information display, which provide easy operation and intelligibly information.

The reliable engine is also EURO 3 emission control certified. The engine is installed in a well designed compartment which provides easier access for maintenance. ▼



### 6-position outrigger length of the span setting.





# Outstanding Lifting workability performance

Fully powered 6 sections round shape Main Boom higher rigidity, lighter weight as well as flexible workability.

- Main Boom performance & capacity
- Max. Lifting capacity..... 130t × 2.5m
- Length of boom..... 11.8m~52.0m
- Max. Lifting height (hook height)..... 53.1m
- Max. Derrick up angle..... 85°
- Max. Rated lifting capacity at full boom... 12.0t × 18m

### Powerful & Rigid derrick cylinder.

- 2-speed (High / Low) selector is equipped.
- Fine operation to rapid operation just as operator wishes.

### Lower noise, high performance engine.

[Low noise type designated by Japanese Ministry of Land, Infrastructure, Transport and Tourism]

- Max output
- 140kW/2200min<sup>-1</sup>
- Max torque
- 725N·m/1600min<sup>-1</sup>

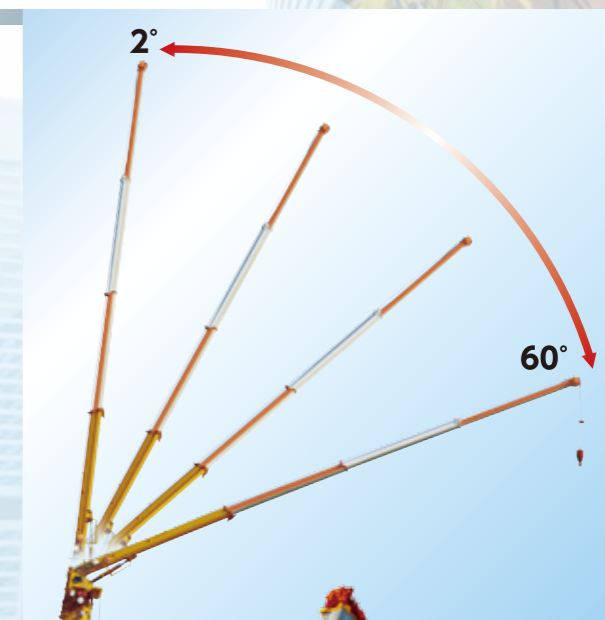


Simple rigging, fully hydraulic powered derricking and telescopic (extension/retraction).



### High rigidity round section shape Fly jib.

- lifting capacity of jib
- Max. length..... 26.6m
- Max. lifting height (Max. hook position)..... 79.6m
- 52m+26.6m (Super Luffing jib angle of 2 degree)  
Rated lifting capacity at max. lifting height..... 2.0t  
(The rated lifting capacity does not change up to working radius of 30m, through the slewing angle of 360 degree.)
- 52m+26.6m (Super Luffing jib angle of 60 degree)  
From Max. Derrick angle through to working radius of 34.0m..... 0.75t
- 52m+20.8m (Super Luffing jib angle of 45 degree)  
At working radius of 50m..... 1.15t



### Short time, rapid rigging Jib.

- Jib rigging requires only one operator to complete in a short time safely.

The slewing tail radius is one of the shortest among this class of mobile cranes in the market. Fine operation is ensured with and without counter weight.

- Rated lifting Capacity with Counter weight
- 9.3t × 20m (52m boom operation)
- Slewing tail radius ..... 3.3m



OPERATION CABIN  
**Cabin**

Safety, Comfortable & Advanced functions



▲Cabin

**Wide visibility, easy control levers position provide comfortable operator's working environment.**

- Configuration of control levers are common to the KATO's Rough terrain crane. An operator of rough-terrain crane will like most his habitually used lever configuration.
- Hydraulic pilot type of operation control levers enable both smooth fine-operation and rapid operation.
- Panoramic wide visibility is provided with wide roof window.

**Equipped with tilting Operator's cabin**

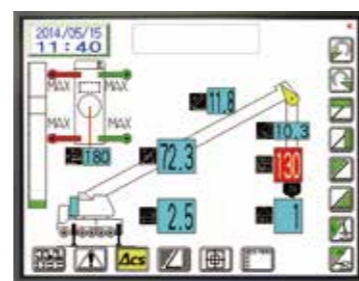
- The operator's cabin can be tilted from **0 to 15** degree. Very comfortable and healthy for the operator during high lifting height operation.

**KATO's latest Safe Load Indicator (ACS) is equipped.**

- Touch screen control color display panel with multi functional system.
- It enables to indicate Hook height to facilitate operator's task.
- Working range limiter can be set by the Crane's position as well as value of distance/angel.



▲Tilting cabin



▲Touch screen control panel type of color display

PROGRESSIVE PARTS  
**Equipments**

Other equipments for the safety and the better workability.



▲Color monitor display



▲Tachograph



▲Driver seat with Air suspension system



▲Projector and HID headlamp



▲Electric remote controlled side mirror



▲Behind view monitor camera



\*Traveling position in working site



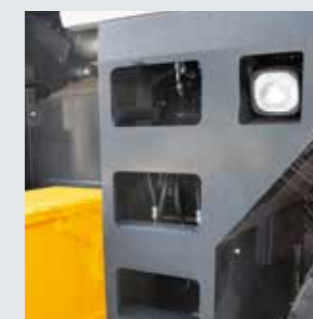
▲Toolbox



▲Remote controlled searchlight



▲Anemometer (Optional)



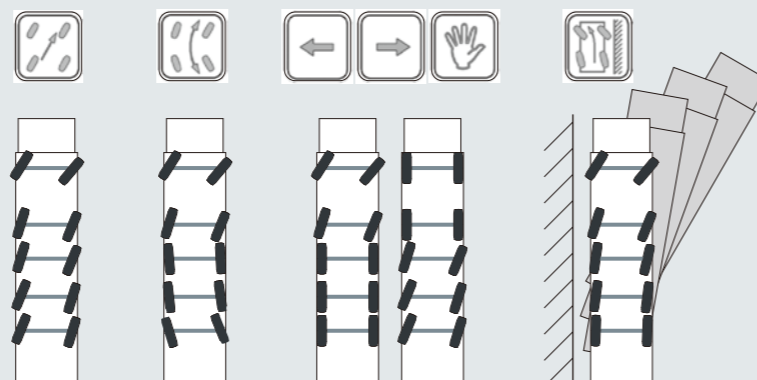
▲Working lamp at outrigger



▲Ladder step

**Special steering modes**

- Simple to select special steering modes by the rear steering selection control panel.



▲Crab steering

▲Counter steering

▲Independent manual rear steering

▲Restraint to rear swing out steering mood