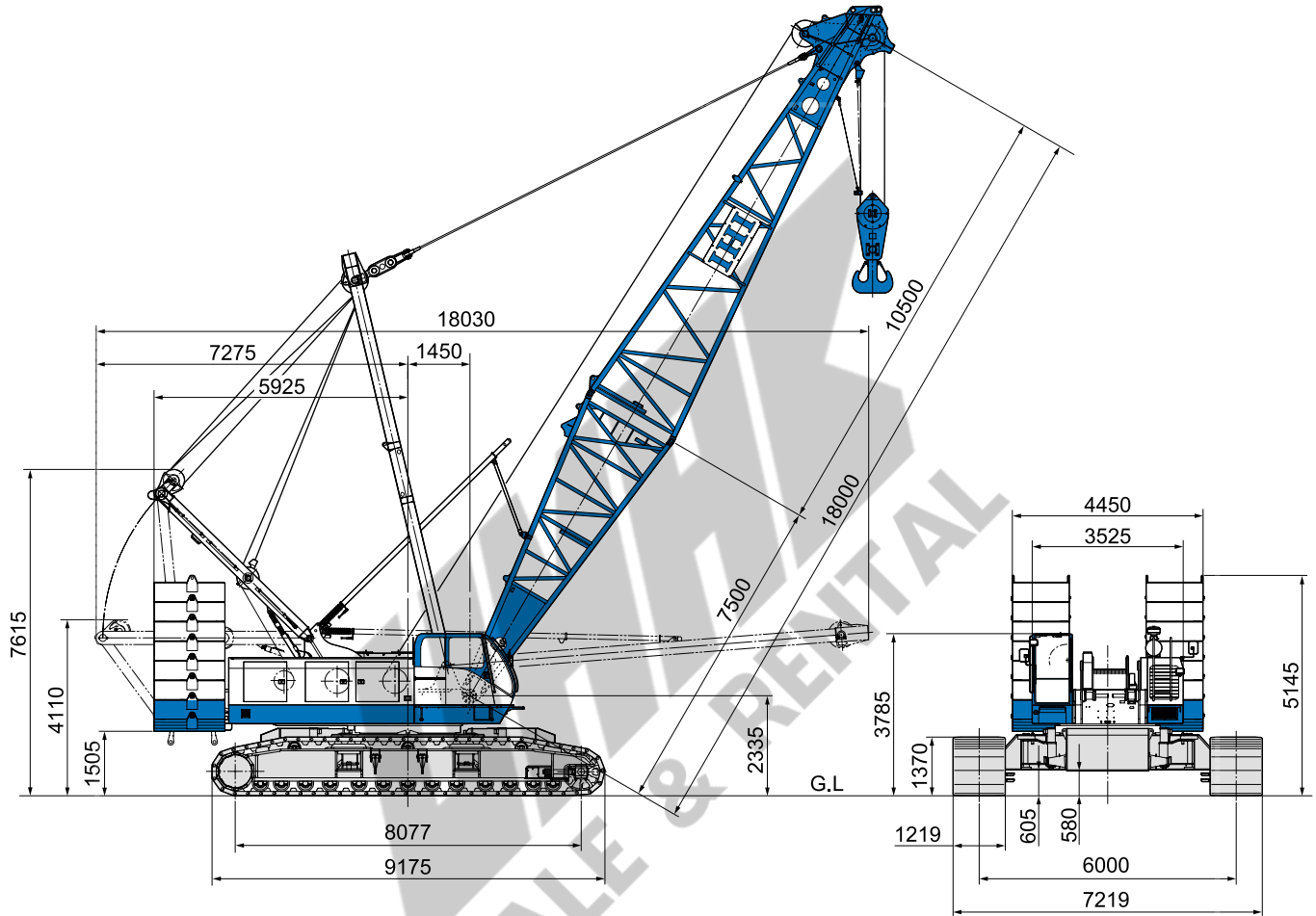


CCH 2500 EX

Max. Lifting Capacity : 250t
 Max. Boom Length : 90m
 Max. Jib Combination : 72m + 37m

■ General dimensions (with basic boom) (Unit : mm)



■ Main specifications

Performance	
Slewing speed	1.7 rpm
Travel speed	0.9/0.6 km/hr
Gradeability	30% (16.7°)
Engine	
Make	Cummins Inc.
Model	QSL
Type	4-cycle, water-cooled, turbocharged and air cooled
Total displacement	8.9 L
Rated output	242 kW / 2,000 min ⁻¹ (325 HP / 2,000 rpm)
Fuel tank capacity	680 L
Battery	12 V × 150 AH × 2 pcs.
Load hoist system (Main & Aux.)	
Hydraulic motor	Axial piston type
Reduction gear	Two-stage planetary gear
Hoist drum	2-grooved cylindrical drums on 2 individual shafts. Main/Auxiliary drum in same width, with lebus type groove.
Clutch	Internal expanding band type
Brake	External contracting band type
Drum lock	Ratchet type
Boom hoist system	
Hydraulic motor	Axial piston type
Reduction gear	Three-stage planetary gear
Hoist drum	Grooved cylindrical single drum on shaft, with lebus type groove
Brake	Wet type multi disc
Drum lock	Ratchet type

■ Crane specifications

Max. lifting capacity (metric ton) × working radius (m)	250 × 4.7	
Max. main boom length (m)	90	
Max. boom length with jib (main+jib) (m)	109 (72+37)	
Rope speed	Main hoisting/lowering (m/min)	*High 120 / 60 ; Lo 60-30
	Auxiliary hoisting/lowering (m/min)	*High 120 / 60 ; Lo 60-30
	Boom hoisting/lowering (m/min)	*85-40
Part lines	250 ton hook block	16 part lines
	25 ton hook block	2 part lines
	Boom hoist/lowering	18 part lines
Standard counterweight (ton)	88.9	
Carbody weight (ton)	29.0	
Total operating weight (with 18m boom) (ton)	Approx. 220.0	
Average ground bearing pressure (kPa) [kgf/cm ²]	(110) [1.12]	

Note 1 : The value marked with "*" may change depending on the loads given.

Standard equipment

- Counterweight removal system
- Engine tachometer (with hour meter)
- Engine diagnostics (with idle speed control)
- Hydraulic pressure gauge
- Fuel gauge
- Engine coolant temperature gauge
- Front work lamp (on both sides)
- Operator's room lamp
- Air conditioner
- Front windshield wiper (with window washer)
- Ceiling wiper (with window washer)
- Sun shade
- Sun-visor
- Storage pouch
- Tool storage
- Reclining operator's seat
- Floor mat
- Steps for operator's cab
- Radio (AM/FM, Cassette)
- Cigarette lighter
- Ashtray
- Rear view mirrors (on both sides)
- Warning horn
- Electric fuel pump
- Slewing flashing light
- Slewing warning Buzzer
- Travel warning Buzzer
- A-frame hoist cylinder
- Bronze tinted glass
- Foot rest
- Electrical engine throttle control grip
- Engine throttle pedal
- Ultra low speed control
- Automatic hydraulic assist brake (main and aux)
- Winch mode selector (main and aux)
- Rope guide roller on boom back (for outer boom)
- Plug socket (24V)
- Loud speaker
- Winch speed control system (main, aux. and boom hoist)
- Pump power-shift system
- Boom foot pin cylinder
- Standard tools for maintenance (details are as per Parts Catalogue)
- Remote controller for jack and crawler connect cylinder

Options

- Base Machine
 - Reeving winch
 - Tagline
 - Slewing parking break
 - Drum rotation indicator
 - Monitor TV (for rear/drum view)
 - Monitor TV (for hook load)
 - Mirror for drum
 - Radio transmitter
 - Combustion type heater
 - Fire extinguisher
 - Room mirror
 - Electric fan
 - Spark arrestor
 - Operator gate lock lever
 - Tool box (installed in front of operator cabin)
 - Name plate (both sides of base machine)
- Light and Instrument
 - Yellow rotary light
 - Airplane warning light
 - Boom point clearance lamp
 - Over load outside alarm light (red/yellow/green)
 - Work light for drum
 - Work light on boom
 - Work light for rear direction
 - Additional Front work light
 - Hand light
 - Electric clinometer
 - Level indicator
 - Anemometer
- Step and guard
 - Catwalk for rear cab
 - Catwalk for rear cab (wide type with handrail)
 - Handrail for catwalk
 - Wire mesh for boom walkway (for insert boom and outer boom)
 - Operator cabin roof guard
 - Wire rope guard for insert boom
 - Hook guard for outer boom (wood or steel pipe)
 - Safety guard rope on main boom
- Attachment
 - 3 m, 6 m, 9 m insert boom (with pendant rope and rope guide roller)
 - 13 m basic jib and accessories
 - 6 m insert jib (with pendant rope)
 - 1m auxiliary jib and accessories
 - 200 ton hook block (eight sheaves)
 - 150 ton hook block (six sheaves)
 - 100 ton hook block (four sheaves)
 - 60 ton hook block (three sheaves)
 - 25/30 ton hook block (one sheave)
 - 13.5 ton hook block (slim type)
 - Auxiliary hoisting wire rope
 - Name plate (both sides of outer boom)
- Others
 - Large size tool box (with caster)
 - Sling wire rope (for lifting counter weight or crawler)

Combination of main boom and Jib boom

Jib length(m) \ Boom length (m)	18-42	45	48	51	54	57	60	63	66	69	72	75	78	81	84	87	90
Aux.	●	●	●	●	●	●	●	●	●	●	●	●	●	●	●	●	●
13		●	●	●	●	●	●	●	●	●	●						
19		●	●	●	●	●	●	●	●	●	●						
25		●	●	●	●	●	●	●	●	●	●						
31		●	●	●	●	●	●	●	●	●	●						
37		●	●	●	●	●	●	●	●	●	●						

●:Applicable combination

Wire rope

Purpose	Rope dia. (mm)	Breaking Strength (kN)	Rope Type
Main hoisting *1	φ28.6	688	P•S(19)+39×P•7
Main hoisting *2	φ28.6	674	IWRC 6×P•WS(36)
Boom hoisting	φ22.4	357	IWRC 6×P•WS(31)
Boom suspension	φ34.0	1024	IWRC 6×P•WS(36)
Jib load hoisting	φ28.6	688	P•S(19)+39×P•7
Jib boom suspension	φ28.0	585	IWRC 6×Fi(29)
Jib strut suspension	φ31.5	734	IWRC 6×Fi(29)

Note:Designed and rated in compliance with ANSI Code B30.5-1.7.1

*1:Use for 200t loads and below.

*2:Use for over 200t loads.

Boom composition

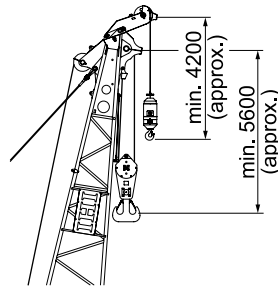
Boom length (m)	18	21	24	27	30	33	36	39	42	45	48	51	54	57
7.5 m Inner	1	1	1	1	1	1	1	1	1	1	1	1	1	1
3 m Insert	—	1	2	1	2	1	1	2	1	1	2	1	1	2
6 m Insert	—	—	—	1	1	2	1	1	2	1	1	2	1	1
9 m Insert	—	—	—	—	—	—	1	1	1	2	2	2	3	3
10.5 m Outer	1	1	1	1	1	1	1	1	1	1	1	1	1	1

Boom length (m)	60	63	66	69	72	75	78	81	84	87	90
7.5 m Inner	1	1	1	1	1	1	1	1	1	1	1
3 m Insert	1	1	2	1	1	2	1	1	2	1	1
6 m Insert	2	1	1	2	1	1	2	1	1	2	1
9 m Insert	3	4	4	4	5	5	5	6	6	6	7
10.5 m Outer	1	1	1	1	1	1	1	1	1	1	1

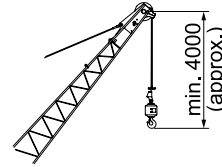
Jib boom composition

Jib length (m)	13	19	25	31	37
6.5 m Inner	1	1	1	1	1
6 m Insert	—	1	2	3	4
6.5m Outer	1	1	1	1	1

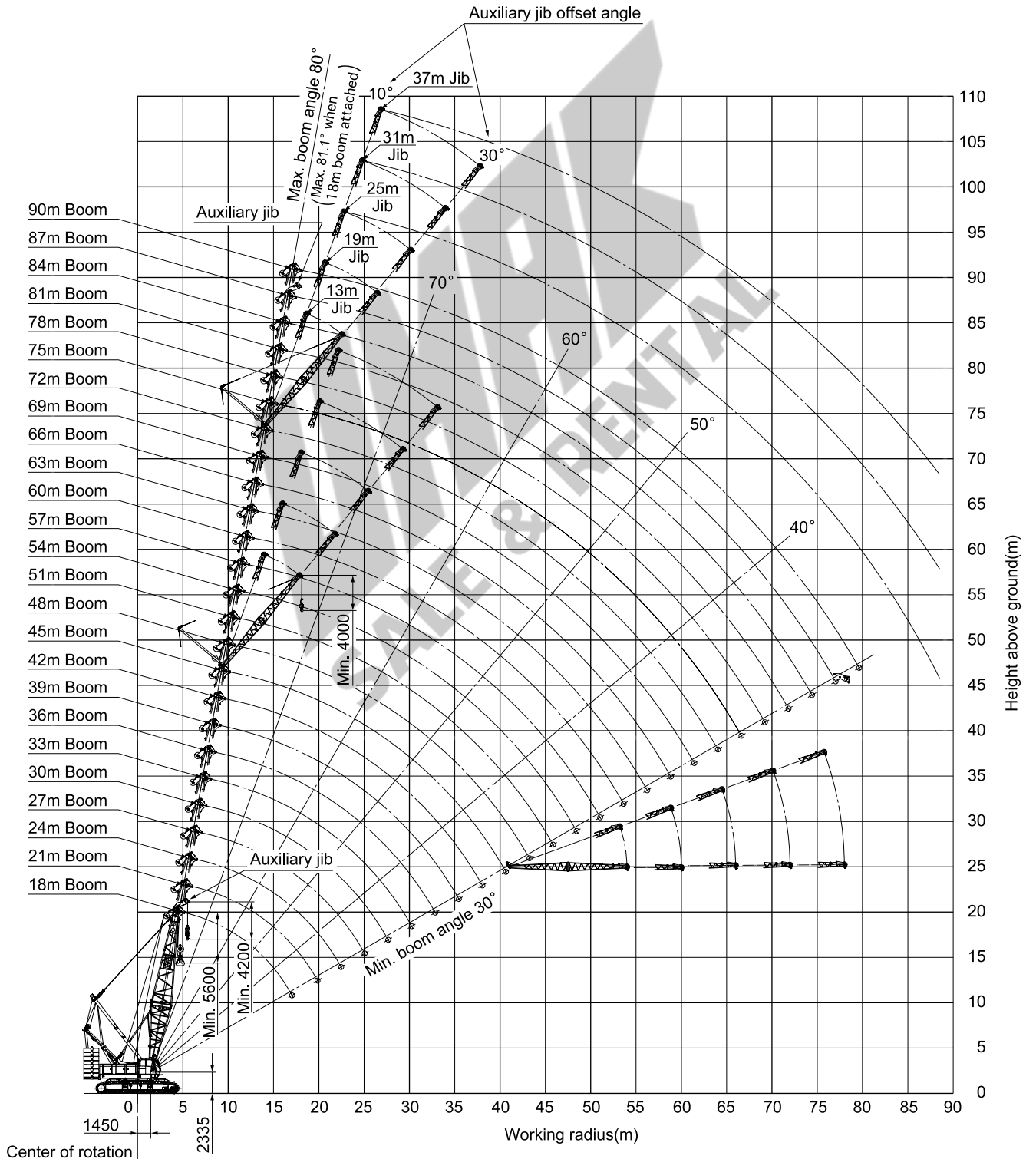
■ Working range (No loaded condition)



Main boom + Auxiliary jib



Auxiliary jib



■ Main boom rated lifting loads (main boom (18m-54m) with 117.9 t counterweight)

Unit: metric ton

Boom length(m) Working radius(m)	18	21	24	27	30	33	36	39	42	45	48	51	54
4.7	250.0	5.6m ×175.0											
6	192.0	175.0	6.1m ×175.0	6.6m ×150.0									
7	163.7	163.0	158.0	150.0	7.2m ×137.5	7.7m ×140.0							
8	144.0	143.3	143.0	142.7	137.5	140.0	8.2m ×135.0	8.7m ×125.0					
9	128.4	127.8	127.5	127.2	125.2	128.0	126.0	122.5	9.2m ×112.5	9.8m ×108.0			
10	115.8	115.2	114.9	114.6	114.9	115.0	114.5	112.5	107.0	105.4	10.3m ×87.5	10.8m ×87.5	11.3m ×75.0
12	89.8	89.5	89.4	89.2	89.7	89.5	89.6	89.4	89.1	86.1	86.0	85.7	75.0
14	72.2	72.0	71.9	71.6	72.1	71.9	71.9	71.7	71.4	71.3	71.3	69.9	69.8
16	60.3	60.0	59.8	59.5	60.0	59.7	59.8	59.6	59.3	59.1	59.1	58.8	58.6
18	17.2m ×54.0	51.2	51.0	50.7	51.2	50.9	50.9	50.7	50.4	50.3	50.2	49.9	49.7
20		19.8m ×45.2	44.4	44.0	44.5	44.2	44.2	44.0	43.6	43.5	43.4	43.1	42.9
22			39.1	38.8	39.2	38.9	38.9	38.7	38.3	38.2	38.1	37.8	37.6
24			22.4m ×38.2	34.6	34.9	34.6	34.6	34.4	34.0	33.9	33.8	33.4	33.3
26				25.0m ×32.7	31.5	31.1	31.1	30.8	30.5	30.3	30.2	29.9	29.7
28					27.6m ×29.2	28.2	28.1	27.9	27.5	27.4	27.3	26.9	26.8
30						25.7	25.6	25.4	25.0	24.8	24.7	24.4	24.3
32							30.2m ×25.4	23.5	23.2	22.8	22.7	22.6	22.3
34								32.8m ×22.6	21.4	21.0	20.8	20.7	20.4
36									35.4m ×20.2	19.4	19.2	19.1	18.8
38										18.0	17.8	17.7	17.4
40											16.5	16.4	16.1
42											40.6m ×16.1	15.3	15.0
44												43.2m ×14.7	13.9
46													45.8m ×13.2
48													
50													48.4m ×11.8
No. of part line	16	14	14	12	11	12	11	10	9	9	7	7	6

■ Main boom rated lifting loads (main boom (57m-90m) with 117.9 t counterweight)

Unit: metric ton

Boom length(m) Working radius(m)	57	60	63	66	69	72	75	78	81	84	87	90
10	11.9m ×75.0											
12	75.0	12.4m ×75.0	12.9m ×75.0	13.4m ×62.5	13.9m ×62.5							
14	69.6	69.6	69.4	62.5	62.5	14.5m ×50.0	15.0m ×50.0	15.5m ×50.0				
16	57.9	57.8	57.7	57.5	57.3	50.0	50.0	48.7	37.5	16.5m ×37.5	17.1m ×37.5	17.6m ×25.0
18	49.7	49.4	48.9	48.6	48.5	48.4	47.7	45.5	37.5	37.5	37.4	25.0
20	42.9	42.6	42.5	42.4	41.8	41.7	41.6	41.4	37.5	37.5	34.8	25.0
22	37.5	37.2	37.2	37.0	36.7	36.5	36.3	36.1	35.9	34.8	32.3	25.0
24	33.2	33.0	32.8	32.6	32.3	32.2	32.1	31.9	31.6	31.5	29.9	25.0
26	29.6	29.4	29.3	29.1	28.8	28.7	28.6	28.3	28.1	28.0	27.7	24.4
28	26.7	26.5	26.3	26.1	25.9	26.2	25.6	25.4	25.1	25.0	24.8	22.6
30	24.1	24.0	23.8	23.5	23.4	24.0	23.6	23.3	22.6	22.5	22.2	21.1
32	21.9	21.8	21.6	21.3	21.2	21.8	21.6	21.4	21.1	20.3	20.0	19.7
34	20.0	20.0	19.7	19.5	19.3	19.9	19.6	19.4	19.3	18.9	18.2	17.9
36	18.4	18.4	18.1	17.9	17.7	18.2	17.9	17.7	17.5	17.2	16.5	16.3
38	16.9	16.9	16.6	16.4	16.2	16.7	16.4	16.2	16.0	15.7	15.0	14.8
40	15.6	15.6	15.3	15.1	14.9	15.4	15.0	14.8	14.7	14.4	14.1	13.5
42	14.5	14.5	14.2	14.0	13.8	14.1	13.8	13.6	13.4	13.1	12.9	12.3
44	13.4	13.4	13.1	12.9	12.7	13.0	12.7	12.5	12.3	12.0	11.6	11.3
46	12.5	12.5	12.2	12.0	11.8	12.0	11.7	11.5	11.3	11.0	10.6	10.3
48	11.7	11.6	11.3	11.1	10.9	11.1	10.8	10.6	10.4	10.1	9.7	9.3
50	10.9	10.9	10.5	10.3	10.1	10.3	10.0	9.8	9.6	9.2	8.9	8.4
52	51.0m ×10.5	10.1	9.8	9.6	9.4	9.6	9.2	9.0	8.7	8.5	8.0	7.6
54		53.6m ×9.4	9.2	9.0	8.7	8.9	8.4	8.2	7.9	7.8	7.2	6.9
56			8.6	8.3	8.0	8.1	7.7	7.4	7.2	7.3	6.5	6.2
58			56.2m ×8.5	7.8	7.5	7.4	7.0	6.7	6.5	6.6	5.8	5.6
60				58.8m ×7.5	6.9	6.8	6.3	6.1	5.8	5.9	5.3	4.9
62					61.4m ×6.4	6.2	5.7	5.5	5.2	5.3	4.7	4.2
64						5.6	5.3	5.1	4.6	4.7	4.1	3.5
66							4.8	4.6	4.1	4.2	3.6	2.9
68							66.6m ×4.6	4.1	3.8	3.7	3.1	2.4
70								69.2m ×3.8	3.3	3.2	2.6	2.2
72									71.8m ×2.9	2.7	2.2	
74										2.3		
76											74.4m ×2.2	
No. of part line	6	6	6	5	5	4	4	4	3	3	3	2

■ Aux. jib rated lifting loads (main boom (18m-87m) with 117.9t counterweight)

Unit: metric ton

Boom length(m) Working radius(m)	18	21	24	27	30	33	36	39	42	45	48	51	54	57	60	63	66	69	72	75	78	81	84	87	
6	13.5	6.5m ×13.5																							
7	13.5	13.5	7.0m ×13.5	7.5m ×13.5																					
8	13.5	13.5	13.5	13.5	8.0m ×13.5	8.6m ×13.5																			
9	13.5	13.5	13.5	13.5	13.5	13.5	9.1m ×13.5	9.6m ×13.5																	
10	13.5	13.5	13.5	13.5	13.5	13.5	13.5	13.5	10.1m ×13.5	10.6m ×13.5	11.2m ×13.5	11.7m ×13.5													
12	13.5	13.5	13.5	13.5	13.5	13.5	13.5	13.5	13.5	13.5	13.5	13.5	12.2m ×13.5	12.7m ×13.5	13.3m ×13.5	13.8m ×13.5									
14	13.5	13.5	13.5	13.5	13.5	13.5	13.5	13.5	13.5	13.5	13.5	13.5	13.5	13.5	13.5	13.5	14.3m ×13.5	14.8m ×13.5	15.3m ×13.5	15.9m ×13.5					
16	13.5	13.5	13.5	13.5	13.5	13.5	13.5	13.5	13.5	13.5	13.5	13.5	13.5	13.5	13.5	13.5	13.5	13.5	13.5	13.5	16.4m ×13.5	16.9m ×13.5	17.4m ×13.5	17.9m ×13.5	
18	17.2m ×13.5	13.5	13.5	13.5	13.5	13.5	13.5	13.5	13.5	13.5	13.5	13.5	13.5	13.5	13.5	13.5	13.5	13.5	13.5	13.5	13.5	13.5	13.5	13.5	13.5
20		19.8m ×13.5	13.5	13.5	13.5	13.5	13.5	13.5	13.5	13.5	13.5	13.5	13.5	13.5	13.5	13.5	13.5	13.5	13.5	13.5	13.5	13.5	13.5	13.5	13.5
22			13.5	13.5	13.5	13.5	13.5	13.5	13.5	13.5	13.5	13.5	13.5	13.5	13.5	13.5	13.5	13.5	13.5	13.5	13.5	13.5	13.5	13.5	13.5
24			22.4m ×13.5	13.5	13.5	13.5	13.5	13.5	13.5	13.5	13.5	13.5	13.5	13.5	13.5	13.5	13.5	13.5	13.5	13.5	13.5	13.5	13.5	13.5	13.5
26				25.0m ×13.5	13.5	13.5	13.5	13.5	13.5	13.5	13.5	13.5	13.5	13.5	13.5	13.5	13.5	13.5	13.5	13.5	13.5	13.5	13.5	13.5	13.5
28					27.6m ×13.5	13.5	13.5	13.5	13.5	13.5	13.5	13.5	13.5	13.5	13.5	13.5	13.5	13.5	13.5	13.5	13.5	13.5	13.5	13.5	13.5
30						13.5	13.5	13.5	13.5	13.5	13.5	13.5	13.5	13.5	13.5	13.5	13.5	13.5	13.5	13.5	13.5	13.5	13.5	13.5	13.5
32						30.2m ×13.5	13.5	13.5	13.5	13.5	13.5	13.5	13.5	13.5	13.5	13.5	13.5	13.5	13.5	13.5	13.5	13.5	13.5	13.5	13.5
34							32.8m ×13.5	13.5	13.5	13.5	13.5	13.5	13.5	13.5	13.5	13.5	13.5	13.5	13.5	13.5	13.5	13.5	13.5	13.5	13.5
36								35.4m ×13.5	13.5	13.5	13.5	13.5	13.5	13.5	13.5	13.5	13.5	13.5	13.5	13.5	13.5	13.5	13.5	13.5	13.5
38									13.5	13.5	13.5	13.5	13.5	13.5	13.5	13.5	13.5	13.5	13.5	13.5	13.5	13.5	13.5	13.5	13.5
40										13.5	13.5	13.5	13.5	13.5	13.5	13.5	13.5	13.5	13.5	13.5	13.5	13.5	13.5	13.5	13.3
42										40.6m ×13.5	13.5	13.5	13.5	13.5	13.5	13.4	13.2	13.0	13.3	13.0	12.8	12.6	12.3	12.1	
44											43.2m ×13.5	13.1	13.0	12.6	12.3	12.1	11.9	12.2	11.9	12.2	11.9	11.7	11.5	11.2	10.8
46												45.8m ×12.4	12.0	11.7	11.7	11.4	11.2	11.0	11.2	10.9	10.7	10.5	10.2	9.8	
48													11.2	10.9	10.8	10.5	10.3	10.1	10.3	10.0	9.8	9.6	9.3	8.9	
50													48.4m ×11.0	10.1	10.1	9.7	9.5	9.3	9.5	9.2	9.0	8.8	8.4	8.1	
52														51.0m ×9.7	9.3	9.0	8.8	8.6	8.8	8.4	8.2	7.9	7.7	7.2	
54															53.6m ×8.6	8.4	8.2	7.9	8.1	7.6	7.4	7.1	7.0	6.4	
56																7.8	7.5	7.2	7.3	6.9	6.6	6.4	6.5	5.7	
58																56.2m ×7.7	7.0	6.7	6.6	6.2	5.9	5.7	5.8	5.0	
60																	58.8m ×6.7	6.1	6.0	5.5	5.3	5.0	5.1	4.5	
62																		61.4m ×5.6	5.4	4.9	4.7	4.4	4.5	3.9	
64																				4.8	4.5	4.3	3.8	3.3	
66																					4.0	3.8	3.3	3.4	2.8
68																					66.6m ×3.8	3.3	3.0	2.9	2.3
70																						69.2m ×3.0	2.5	2.4	
72																							71.8m ×2.1		
No. of part line	1	1	1	1	1	1	1	1	1	1	1	1	1	1	1	1	1	1	1	1	1	1	1	1	1

■ Notes

- All rated loads are based on the machine being operated on the firm, level, uniformly supporting surface ground, at any point of 360-around the machine within 78% of tipping load and forward stability factor over 1.15.
Working radius is horizontal distance from center of rotation to a vertical line through the center of gravity of the load.
- To determine actual lifting loads, the weight of all lifting devices such as hook must be reduced from the lifting loads.

250 ton hook2,900 kg	60 ton hook1,200 kg
200 ton hook2,700 kg	30/25 ton hook1,000 kg
150 ton hook2,400 kg	13.5 ton hook600 kg
100 ton hook1,400 kg		
- The following weight must be reduced from the lifting loads to determine rated lifting loads for main boom when the jib is equipped.

Aux. jib800 kg	25.0 m jib4,900 kg
13.0 m jib3,500 kg	31.0 m jib6,000 kg
19.0 m jib4,000 kg	37.0 m jib6,700 kg

4. Depending on the number of part lines, rated lifting loads are limited as follows.

1 part lineup to 13.5 ton	9 part linesup to 112.5 ton
2 part linesup to 25.0 ton	10 part linesup to 125.0 ton
3 part linesup to 37.5 ton	11 part linesup to 137.5 ton
4 part linesup to 50.0 ton	12 part linesup to 150.0 ton
5 part linesup to 62.5 ton	13 part linesup to 162.5 ton
6 part linesup to 75.0 ton	14 part linesup to 175.0 ton
7 part linesup to 87.5 ton	15 part linesup to 187.5 ton
8 part linesup to 100.0 ton	16 part lines200.0-250.0 ton

5. The aux. jib can be equipped in the range of boom length from 18 m to 87 m boom. To determine the rated lifting loads, 0.8 ton must be reduced from the lifting loads for each boom length in the lifting load chart. However the max. lifting load should not exceed the 13.5 ton.

6. When the 13 m-37 m jib mounted, the lifting loads to be determined by "Jib Rated Lifting Loads".

7. The total weight of the main hook and the jib hook must be reduced from the rated load when lifting on the jib hook with the main hook being attached.

8. The angle formed by the extension line of main boom and the centerline of jib (offset angle) should not exceed 30 degree while the loads being lifted.

Jib rated lifting loads (jib boom (main boom 45m-48m) with 117.9t counterweight)

Unit: metric ton

Boom length (m)	45										48									
	13		19		25		31		37		13		19		25		31		37	
Jib length (m)	10°	30°	10°	30°	10°	30°	10°	30°	10°	30°	10°	30°	10°	30°	10°	30°	10°	30°	10°	30°
Jib offset angle																				
Working radius (m)																				
14	25.0																			
16	25.0																			
18	25.0	19.6	20.4																	
20	25.0	18.9	19.7																	
22	24.3	18.4	19.0																	
24	23.3	17.6	18.3	13.5	12.5															
26	22.3	16.9	17.7	13.4	12.3	8.7	6.8													
28	21.4	16.3	17.2	13.1	12.1	8.5	6.7													
30	20.4	15.8	16.7	12.7	11.9	8.4	6.6	5.5	4.7											
32	19.5	15.3	16.2	12.2	11.6	8.2	6.5	5.4	4.6											
34	18.8	14.8	15.8	11.8	11.4	8.0	6.4	5.4	4.4	3.2										
36	18.0	14.4	15.0	11.4	11.2	7.9	6.2	5.3	4.2	3.1										
38	17.3	14.1	14.2	11.1	11.0	7.7	6.1	5.2	4.0	3.1										
40	16.4	13.7	13.6	10.8	10.8	7.5	6.0	5.2	3.9	3.0										
42	15.2	13.5	13.0	10.5	10.6	7.4	5.9	5.1	3.7	3.0										
44	14.1	13.2	12.5	10.2	10.3	7.2	5.7	5.0	3.6	2.8										
46	13.1	13.0	12.0	10.0	10.1	7.1	5.6	4.9	3.5	2.8										
48	12.2	12.4	11.6	9.8	9.9	6.9	5.5	4.8	3.3	2.7										
50	11.3	11.5	11.2	9.6	9.7	6.7	5.4	4.8	3.2	2.6										
52	10.6	10.7	10.8	9.4	9.5	6.6	5.3	4.7	3.1	2.5										
54	10.0	10.0	10.4	9.3	9.2	6.4	5.1	4.6	3.0	2.5										
56			9.7	9.2	9.0	6.3	5.0	4.6	2.9	2.4										
58			9.1	9.1	8.8	6.3	4.9	4.5	2.8	2.4										
60			8.7		8.6	6.3	4.8	4.4	2.7	2.3										
62					8.3	6.3	4.7	4.4	2.7	2.3										
64					7.8	6.3	4.5	4.3	2.6	2.2										
66					7.7	6.3	4.4	4.3	2.5	2.2										
68							4.3	4.3	2.4	2.2										
70							4.2	4.2	2.4	2.1										
72								4.2	2.3	2.1										
74									2.2	2.1										
76										2.1										
78																				
80																				
82																				
84																				
86																				
No. of part line	2	2	2	1	1	1	1	1	1	1	2	2	2	1	1	1	1	1	1	1

Jib rated lifting loads (jib boom (main boom 51m-54m) with 117.9t counterweight)

Unit: metric ton

Boom length (m)	51										54									
	13		19		25		31		37		13		19		25		31		37	
Jib length (m)	10°	30°	10°	30°	10°	30°	10°	30°	10°	30°	10°	30°	10°	30°	10°	30°	10°	30°	10°	30°
Jib offset angle																				
Working radius (m)																				
14	15.5m x 25.0																			
16	25.0																			
18	25.0	19.0m x 19.6	20.9																	
20	25.0	19.1	20.1																	
22	25.0	18.7	19.5																	
24	24.2	18.2	18.8	13.5	12.7															
26	23.3	17.5	18.3	13.5	12.5															
28	22.5	16.9	17.7	13.3	12.3	8.6	6.8													
30	21.6	16.4	17.2	13.1	12.1	8.5	6.7													
32	20.8	15.9	16.8	12.6	11.9	8.3	6.6													
34	19.9	15.4	16.3	12.2	11.7	8.2	6.5	5.4	4.6											
36	18.8	15.0	15.9	11.9	11.5	8.0	6.4	5.4	4.4	3.2										
38	17.3	14.6	15.3	11.5	11.3	7.9	6.3	5.3	4.2	3.1										
40	15.9	14.3	14.6	11.2	11.1	7.7	6.1	5.2	4.0	3.1										
42	14.7	13.9	14.0	10.9	10.9	7.6	6.0	5.2	3.9	3.0										
44	13.6	13.7	13.4	10.6	10.7	7.4	5.9	5.1	3.8	3.0										
46	12.6	13.0	12.9	10.4	10.5	7.3	5.8	5.0	3.6	2.8										
48	11.7	12.0	12.2	10.2	10.3	7.2	5.7	4.9	3.5	2.8										
50	10.8	11.1	11.3	9.9	10.1	7.0	5.6	4.9	3.4	2.7										
52	10.0	10.3	10.6	9.7	9.9	6.9	5.5	4.8	3.3	2.6										
54	9.3	9.6	9.8	9.6	9.7	6.7	5.4	4.7	3.2	2.6										
56	8.7	8.9	9.2	9.4	9.5	6.6	5.2	4.7	3.1	2.5										
58	8.1	8.2	8.6	8.9	8.9	6.4	5.1	4.6	3.0	2.4										
60			8.0	8.3	8.3	6.3	5.0	4.6	2.9	2.4										
62			7.5	7.7	7.8	6.3	4.9	4.5	2.8	2.3										
64			7.0	7.2	7.3	6.2	4.8	4.4	2.7	2.3										
66					6.9	6.2	4.7	4.4	2.7	2.3										
68					6.5	6.2	4.6	4.3	2.6	2.2										
70					6.2	4.5	4.3	2.5	2.2											
72							4.4	4.3	2.4	2.2										
74							4.2	4.2	2.4	2.1										
76								4.2	2.3	2.1										
78																				
80																				
82																				
84																				
86																				
No. of part line	2	2	2	1	1	1	1	1	1	1	2	2	2	1	1	1	1	1	1	1

Jib rated lifting loads (jib boom (main boom 57m-60m) with 117.9t counterweight)

Unit: metric ton

Boom length (m)	57										60										
Jib length (m)	13		19		25		31		37		13		19		25		31		37		
Jib offset angle	10°	30°	10°	30°	10°	30°	10°	30°	10°	30°	10°	30°	10°	30°	10°	30°	10°	30°	10°	30°	
Working radius (m)																					
16	16.5m × 25.0																				
18	25.0																				
20	25.0	19.6	20.6																		
22	25.0	18.9	19.9																		
24	25.0	18.6	19.3	24.5m × 13.5	12.8																
26	24.2	18.0	18.7	13.5	12.6																
28	23.4	17.4	18.2	13.5	12.4	8.7	6.9														
30	22.6	16.9	17.7	13.2	12.2	8.6	6.8														
32	21.3	16.4	17.3	13.0	12.1	8.4	6.7	5.5	4.8												
34	20.1	15.9	16.8	12.6	11.9	8.3	6.6	5.5	4.6												
36	18.3	15.5	16.4	12.2	11.7	8.2	6.5	5.4	4.5	3.2											
38	16.8	15.1	16.0	11.9	11.5	8.0	6.4	5.3	4.4	3.2											
40	15.4	14.7	15.6	11.6	11.3	7.9	6.3	5.3	4.2	3.1											
42	14.2	14.4	14.8	11.3	11.1	7.8	6.2	5.2	4.1	3.1											
44	13.1	13.6	13.6	11.0	11.0	7.6	6.1	5.2	3.9	3.0											
46	12.1	12.5	12.6	10.7	10.8	7.5	6.0	5.1	3.8	2.9											
48	11.2	11.6	11.7	10.5	10.6	7.4	5.9	5.0	3.7	2.8											
50	10.3	10.7	10.8	10.3	10.4	7.2	5.8	5.0	3.6	2.8											
52	9.6	9.9	10.1	10.1	10.2	7.1	5.6	4.9	3.4	2.7											
54	8.8	9.1	9.4	9.9	9.7	7.0	5.5	4.8	3.3	2.6											
56	8.2	8.4	8.7	9.2	9.0	6.8	5.4	4.8	3.2	2.6											
58	7.5	7.8	8.1	8.5	8.4	6.7	5.3	4.7	3.1	2.5											
60	6.9	7.1	7.5	7.9	7.9	6.6	5.2	4.7	3.1	2.5											
62	6.2	6.4	6.9	7.3	7.4	6.4	5.1	4.6	3.0	2.4											
64	6.3.5m × 5.8	5.8	6.3	6.7	6.9	6.3	5.0	4.5	2.9	2.4											
66			5.8	6.1	6.3	6.3	4.9	4.5	2.8	2.3											
68			5.2	5.5	5.8	6.2	4.8	4.4	2.7	2.3											
70			6.9.0m × 5.0	5.0	5.3	5.7	4.7	4.4	2.7	2.3											
72				7.0.5m × 4.8	4.9	5.2	4.6	4.3	2.6	2.2											
74					4.4	4.7	4.5	4.3	2.5	2.2											
76					7.5.0m × 4.2	4.2	4.4	4.3	2.5	2.2											
78						7.6.5m × 4.1	4.0	4.3	2.4	2.1											
80							3.7	3.9	2.3	2.1											
82							8.0.5m × 3.5	3.5	2.3	2.1											
84								8.2.5m × 3.4	2.2	2.1											
86									8.5.5m × 2.2	2.1											
88										2.1											
90										8.8.5m × 2.1											
No. of part line	2	2	2	1	1	1	1	1	1	1	2	2	2	1	1	1	1	1	1	1	1

Jib rated lifting loads (jib boom (main boom 63m-66m) with 117.9t counterweight)

Unit: metric ton

Boom length (m)	63										66										
Jib length (m)	13		19		25		31		37		13		19		25		31		37		
Jib offset angle	10°	30°	10°	30°	10°	30°	10°	30°	10°	30°	10°	30°	10°	30°	10°	30°	10°	30°	10°	30°	
Working radius (m)																					
16	17.5m × 25.0																				
18	25.0																				
20	25.0	21.5m × 19.6	20.9																		
22	24.9	19.1	20.3																		
24	24.3	18.8	19.7	25.5m × 13.5	12.9																
26	23.7	18.5	19.2	13.5	12.7																
28	23.2	17.9	18.6	13.5	12.6	29.0m × 9.8	7.0														
30	22.6	17.4	18.2	13.4	12.4	8.6	6.9														
32	21.8	16.9	17.7	13.2	12.2	8.5	6.8	3.3.0m × 5.5	4.8												
34	19.7	16.4	17.3	13.0	12.1	8.4	6.7	5.5	4.8												
36	18.0	16.0	16.9	12.6	11.9	8.3	6.6	5.4	4.6												
38	16.5	15.6	16.5	12.2	11.7	8.2	6.5	5.4	4.5	3.2											
40	15.1	15.2	15.6	11.9	11.5	8.0	6.4	5.3	4.3	3.1											
42	13.8	14.5	14.4	11.6	11.4	7.9	6.3	5.3	4.2	3.1											
44	12.7	13.3	13.3	11.3	11.2	7.8	6.2	5.2	4.1	3.1											
46	11.7	12.3	12.3	11.1	11.0	7.7	6.1	5.2	3.9	3.0											
48	10.8	11.3	11.3	10.8	10.9	7.5	6.0	5.1	3.8	2.9											
50	10.0	10.4	10.5	10.6	10.7	7.4	5.9	5.1	3.7	2.8											
52	9.2	9.6	9.7	10.3	9.9	7.3	5.8	5.0	3.6	2.8											
54	8.5	8.9	9.0	9.6	9.2	7.2	5.7	4.9	3.5	2.7											
56	7.7	8.1	8.3	8.9	8.6	7.0	5.6	4.8	3.4	2.6											
58	7.0	7.4	7.7	8.3	8.0	6.9	5.5	4.8	3.3	2.6											
60	6.4	6.7	7.0	7.6	7.6	6.8	5.4	4.7	3.2	2.5											
62	5.8	6.0	6.4	6.9	7.0	6.7	5.3	4.7	3.1	2.5											
64	5.2	5.4	5.8	6.3	6.4	6.5	5.2	4.6	3.0	2.4											
66	4.7	4.9	5.3	5.7	5.8	6.3	5.1	4.6	2.9	2.4											
68	4.2	4.3	4.8	5.2	5.3	5.9	5.0	4.5	2.9	2.4											
70	6.8.5m × 4.0	6.9.5m × 3.9	4.3	4.6	4.8	5.3	4.9	4.5	2.8	2.3											
72			3.8	4.1	4.4	4.8	4.5	4.4	2.7	2.3											
74			3.4	3.6	4.0	4.4	4.1	4.4	2.7	2.2											
76				7.5.5m × 3.3	3.5	3.9	3.7	4.2	2.6	2.2											
78					3.2	3.5	3.4	3.8	2.5	2.2											
80					2.8	3.0	3.2	3.4	2.5	2.2											
82						2.9	3.0	2.4	2.1												
84							2.5	2.8	2.1												
86								2.5	2.1												
No. of part line	2	2	2	1	1	1	1	1	1	1	2	2	2	1	1	1	1	1	1	1	1

■ Jib rated lifting loads (jib boom (main boom 69m-72m) with 117.9t counterweight)

Unit: metric ton

Boom length (m)	69										72									
Jib length (m)	13		19		25		31		37		13		19		25		31		37	
Jib offset angle	10°	30°	10°	30°	10°	30°	10°	30°	10°	30°	10°	30°	10°	30°	10°	30°	10°	30°	10°	30°
Working radius (m)	18.5m × 25.0		21.0m × 21.8		23.0m × 13.1		25.0m × 7.2		27.0m × 5.0		19.0m × 25.0		21.5m × 21.8		23.5m × 13.2		25.5m × 7.2		27.5m × 5.0	
18	25.0										25.0									
20	25.0	22.5m × 19.5	20.7		23.0m × 13.1						25.0	23.0m × 19.5	20.8		23.5m × 13.2					
22	24.7	19.0	20.1		13.0		25.0m × 7.2				24.9	19.0	20.2		13.1		25.5m × 7.2			
24	24.2	18.7	19.5	26.5m × 13.5	12.8		7.1		27.0m × 5.0		24.4	18.8	19.7	27.0m × 13.5	12.7		7.1		27.5m × 5.0	
26	23.6	18.3	19.0	13.5	12.7		7.0		5.0		23.9	18.5	19.2	13.5	12.3		7.0		5.0	
28	23.2	17.8	18.6	13.5	12.5	30.5m × 8.8	6.9		4.9		22.8	18.0	18.7	13.5	11.9	31.0m × 8.8	7.0		5.0	
30	21.1	17.3	18.1	13.3	12.4	8.6	6.8		4.9		20.7	17.5	18.3	13.4	11.5	8.6	6.9		4.9	
32	19.3	16.8	17.7	13.1	12.2	8.5	6.7	5.5	4.8		19.1	17.0	17.9	13.2	11.1	8.5	6.8	34.5m × 5.5	4.8	
34	17.6	16.4	17.3	12.9	12.0	8.4	6.7	5.5	4.7		17.4	16.6	17.5	13.0	10.7	8.4	6.7	5.5	4.8	
36	16.1	16.0	16.6	12.6	11.9	8.3	6.6	5.4	4.6	3.2	15.9	16.2	16.4	12.7	10.3	8.3	6.6	5.4	4.6	38.5m × 3.2
40	14.7	15.4	15.3	12.2	11.7	8.1	6.5	5.4	4.5	3.2	14.5	15.2	15.1	12.4	10.0	8.2	6.5	5.4	4.6	3.2
42	13.4	14.1	14.0	11.9	11.6	8.0	6.4	5.3	4.3	3.1	13.2	14.0	13.9	12.1	9.8	8.1	6.4	5.3	4.5	3.1
44	12.3	13.0	12.9	11.6	11.4	7.9	6.3	5.3	4.2	3.1	12.1	12.8	12.7	11.8	9.6	8.0	6.3	5.3	4.3	3.1
46	11.3	11.9	11.8	11.4	11.2	7.8	6.2	5.2	4.1	3.1	11.1	11.8	11.7	11.5	9.4	7.9	6.3	5.3	4.1	3.1
48	10.4	10.9	10.9	11.1	11.0	7.7	6.1	5.2	4.0	3.0	10.2	10.8	10.7	11.3	9.2	7.8	6.2	5.2	4.0	3.0
50	9.5	10.0	10.1	10.8	10.2	7.6	6.0	5.1	3.8	2.9	9.3	9.9	9.9	10.7	9.0	7.6	6.1	5.2	3.9	3.0
52	8.7	9.2	9.3	10.1	9.4	7.5	5.9	5.1	3.7	2.8	8.4	9.0	9.1	9.9	8.8	7.5	6.0	5.1	3.8	2.8
54	7.9	8.4	8.5	9.3	8.7	7.3	5.8	5.0	3.6	2.8	7.6	8.2	8.3	9.1	8.6	7.4	5.9	5.0	3.7	2.8
56	7.1	7.6	7.8	8.6	8.3	7.2	5.8	4.9	3.5	2.7	6.8	7.3	7.5	8.3	8.1	7.3	5.8	5.0	3.6	2.7
58	6.4	6.8	7.0	7.8	7.7	7.1	5.7	4.9	3.4	2.6	6.1	6.6	6.8	7.6	7.4	7.2	5.7	4.9	3.5	2.7
60	5.7	6.1	6.4	7.1	7.0	7.0	5.6	4.8	3.3	2.6	5.5	5.9	6.1	6.8	6.7	7.1	5.6	4.8	3.4	2.6
62	5.1	5.5	5.8	6.4	6.4	6.8	5.5	4.8	3.2	2.5	4.9	5.2	5.5	6.2	6.1	6.6	5.6	4.8	3.3	2.6
64	4.6	4.9	5.2	5.8	5.8	6.5	5.4	4.7	3.2	2.5	4.3	4.6	4.9	5.5	5.5	6.4	5.5	4.8	3.2	2.5
66	4.0	4.3	4.6	5.2	5.2	5.9	5.3	4.7	3.1	2.5	3.7	4.1	4.4	4.9	5.0	5.7	5.0	4.7	3.1	2.5
68	3.5	3.8	4.1	4.6	4.7	5.4	4.8	4.6	3.0	2.4	3.2	3.5	3.8	4.4	4.4	5.1	4.5	4.7	3.1	2.4
70	3.0	3.2	3.6	4.1	4.2	4.8	4.3	4.6	2.9	2.4	2.8	3.0	3.4	3.9	3.9	4.6	4.1	4.6	3.0	2.4
72	2.6	2.8	3.2	3.6	3.8	4.3	3.9	4.5	2.9	2.3	2.3	2.5	2.9	3.4	3.5	4.1	3.8	4.3	2.9	2.4
74		2.3	2.8	3.1	3.3	3.8	3.7	4.0	2.8	2.3		2.1	2.5	2.9	3.1	3.6	3.6	3.8	2.9	2.3
76			2.3	2.7	2.9	3.4	3.4	3.6	2.7	2.3			2.1	2.4	2.6	3.2	3.1	3.4	2.8	2.3
78				2.2	2.5	2.9	3.0	3.2	2.7	2.2					2.3	2.7	2.7	3.0		2.3
80					2.2	2.5	2.6	2.9		2.2						2.3	2.3	2.9		2.2
82						2.1	2.2	2.8		2.2								2.5		
84								2.4										2.1		
No. of part line	2	2	2	1	1	1	1	1	1	1	2	2	2	1	1	1	1	1	1	1

IHI IHI Construction Machinery Limited
 Kishi-Tokai Bldg., 8-4-4 Nishikamata, Ota-ku, Tokyo 144-8577 JAPAN
 Phone: +81-3-5714-8844 Fax: +81-3-5714-8840, 8841

Specifications are subject to change without notice due to technical improvements or modifications.
 Distributed by

