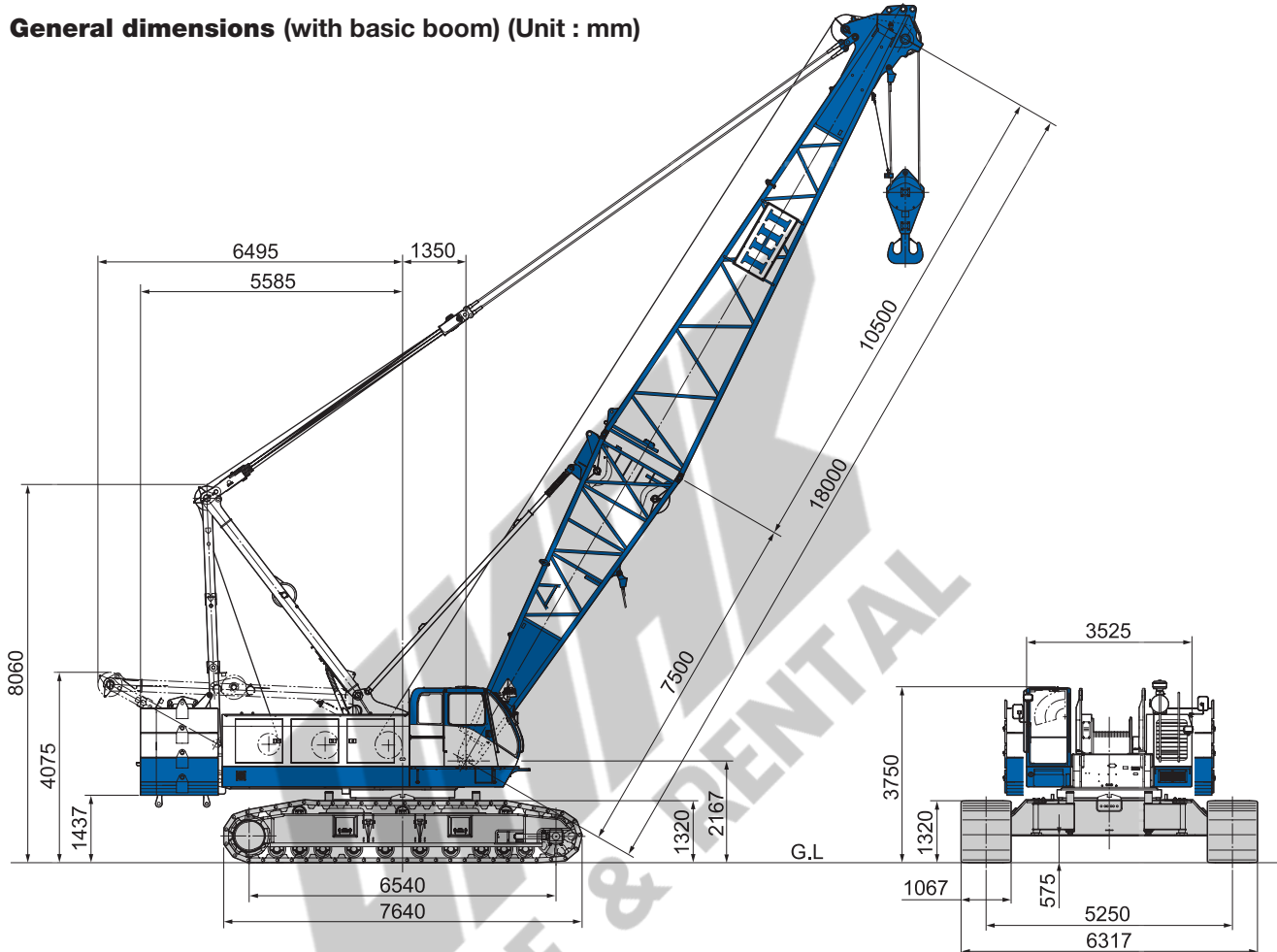


# CCH 1200EX

Max. Lifting Capacity : 120t  
 Max. Boom Length : 75m  
 Max. Jib Combination : 63m + 25m

## General dimensions (with basic boom) (Unit : mm)



## Main specifications

Performance	
Slewing speed	2.0 rpm
Travel speed	1.0/0.7 km/hr
Gradeability	30% (16.7°)
Engine	
Make	Cummins Inc.
Model	QSC8.3
Type	4-cycle, water-cooled, turbocharged and air cooled diesel engine, complying with US EPA Tier III and EU Stage IIIA
Total displacement	8.3 L
Rated output	224 kW / 2,100 min <sup>-1</sup> (300 HP / 2,100 rpm)
Fuel tank capacity	440 L
Battery	12 V × 120 AH × 2 pcs.
Load hoist system (Main & Aux.)	
Hydraulic motor	Axial piston type
Reduction gear	Two-stage planetary gear
Hoist drum	2 grooved cylindrical drums on individual shafts. Main/Auxiliary drum in same width, with lebus type groove.
Clutch	Internal expanding band type
Brake	External contracting band type
Drum lock	Ratchet type
Boom hoist system	
Hydraulic motor	Axial piston type
Reduction gear	One-stage planetary gear and single stage spur gear
Hoist drum	Grooved cylindrical single drum on shaft, with lebus type groove
Brake	Wet type multi disc
Drum lock	Ratchet type

## Crane specifications

Max. lifting capacity (metric ton) × working radius (m)	120 × 5.0	
Max. main boom length (m)	75	
Max. boom length with jib (main+jib) (m)	88 (63+25)	
Rope speed	Main hoisting/lowering (m/min)	*High 120 / 60 ; Lo 60-30
	Aux. hoisting/lowering (m/min)	*High 120 / 60 ; Lo 60-30
	Boom hoisting/lowering (m/min)	*70
Part lines	120 ton hook block	10 part lines
	12 ton hook block	1 part line
	Boom hoisting/lowering	14 part lines
Standard counterweight (ton)	42.6	
Total operating weight (with 18m boom) (ton)	Approx. 120.7	
Average ground bearing pressure (kPa) [kgf/cm <sup>2</sup> ]	(85) [0.86]	

Note 1 : The value marked with "\*" may change depending on the loads given.

## Standard equipment

- Counterweight (42.6ton)
- Counterweight removal system
- Engine tachometer (with hour meter)
- Engine diagnostics (with idle speed control)
- Hydraulic pressure gauge
- Fuel gauge
- Engine coolant temperature gauge
- Front work lamp (on both sides)
- Operator's room lamp
- Air conditioner
- Front windshield wiper (with window washer)
- Ceiling wiper (with window washer)
- Sun shade
- Sun-visor
- Storage pouch
- Tool storage
- Reclining operator's seat
- Floor mat
- Steps for operator's cab
- Radio (AM/FM, Cassette)
- Cigarette lighter
- Ashtray
- Rear view mirrors (on both sides)
- Warning horn
- Electric fuel pump
- Slewing flashing light
- Slewing warning Buzzer
- Travel warning Buzzer
- A-frame hoist cylinder
- Bronze tinted glass
- Foot rest
- Electrical engine throttle control grip
- Engine throttle pedal
- Ultra low speed control
- Automatic hydraulic assist brake (main and aux)
- Winch mode selector (main and aux)
- Rope guide roller on boom back (for outer boom)
- Plug socket (24V)
- Loud speaker
- Winch speed control system (main, aux. and boom hoist)
- Pump power-shift system
- Boom foot pin cylinder
- Standard tools for maintenance (details are as per Parts Catalogue)
- Remote controller for jack and crawler connect cylinder

## Options

- Base Machine
  - Reeving winch
  - Tagline
  - Slewing parking break
  - Drum rotation indicator
  - Monitor TV (for rear/drum view)
  - Monitor TV (for hook load)
  - Mirror for drum
  - Radio transmitter
  - Combustion type heater
  - Fire extinguisher
  - Room mirror
  - Electric fan
  - Spark arrestor
  - Operator gate lock lever
  - Tool box (installed in front of operator cabin)
  - Name plate (both sides of base machine)
- Light and Instrument
  - Yellow rotary light
  - Airplane warning light
  - Boom point clearance lamp
  - Over load outside alarm light (red/yellow/green)
  - Work light for drum
  - Work light on boom
  - Work light for rear direction
  - Additional Front work light
  - Hand light
  - Electric clinometer
  - Level indicator
  - Anemometer
- Step and guard
  - Catwalk for rear cab
  - Catwalk for rear cab (wide type with handrail)
  - Handrail for catwalk
  - Wire mesh for boom walkway
  - Operator cabin roof guard
  - Wire rope guard for insert boom
  - Hook guard for outer boom (wood or steel pipe)
  - Safety guard rope on main boom
- Attachment
  - 3 m, 6 m, 9 m insert boom (with pendant rope and rope guide roller)
  - 13 m basic jib and accessories
  - 6 m insert jib (with pendant rope)
  - 1m auxiliary jib and accessories
  - 80 ton hook block (three sheaves)
  - 60 ton hook block (three sheaves)
  - 50 ton hook block (three sheaves)
  - 30 ton hook block (one sheave)
  - 12.0 ton hook block
  - Auxiliary hoisting wire rope
  - Name plate (both sides of outer boom)
- Others
  - Large size tool box (with caster)
  - Sling wire rope (for lifting counter weight or crawler)

## Combination of main boom and jib boom

Boom length (m) \ Jib length (m)	18-27	30	33	36	39	42	45	48	51	54	57	60	63	66	69	72	75
Aux.	●	●	●	●	●	●	●	●	●	●	●	●	●	●	●	●	●
13		●	●	●	●	●	●	●	●	●	●	●	●				
19		●	●	●	●	●	●	●	●	●	●	●	●				
25		●	●	●	●	●	●	●	●	●	●	●	●				

●:Applicable combination

## Wire rope

Purpose	Rope dia. (mm)	Breaking Strength (kN)	Rope Type
Main hoisting	φ 28.6	688	P•S(19)+39×P•7
Main hoisting	φ 28.6	674	IWRC 6×P•WS(36)
Boom hoisting	φ 22.4	357	IWRC 6×P•WS(31)
Boom suspension	φ 31.5	735	IWRC 6×Fi(29)
Jib load hoisting	φ 28.6	688	P•S(19)+39×P•7
Jib boom suspension	φ 28.0	585	IWRC 6×Fi(29)
Jib strut suspension	φ 28.0	585	IWRC 6×Fi(29)

Note:Designed and rated in compliance with ANSI Code B30.5-1.7.1

## Boom composition

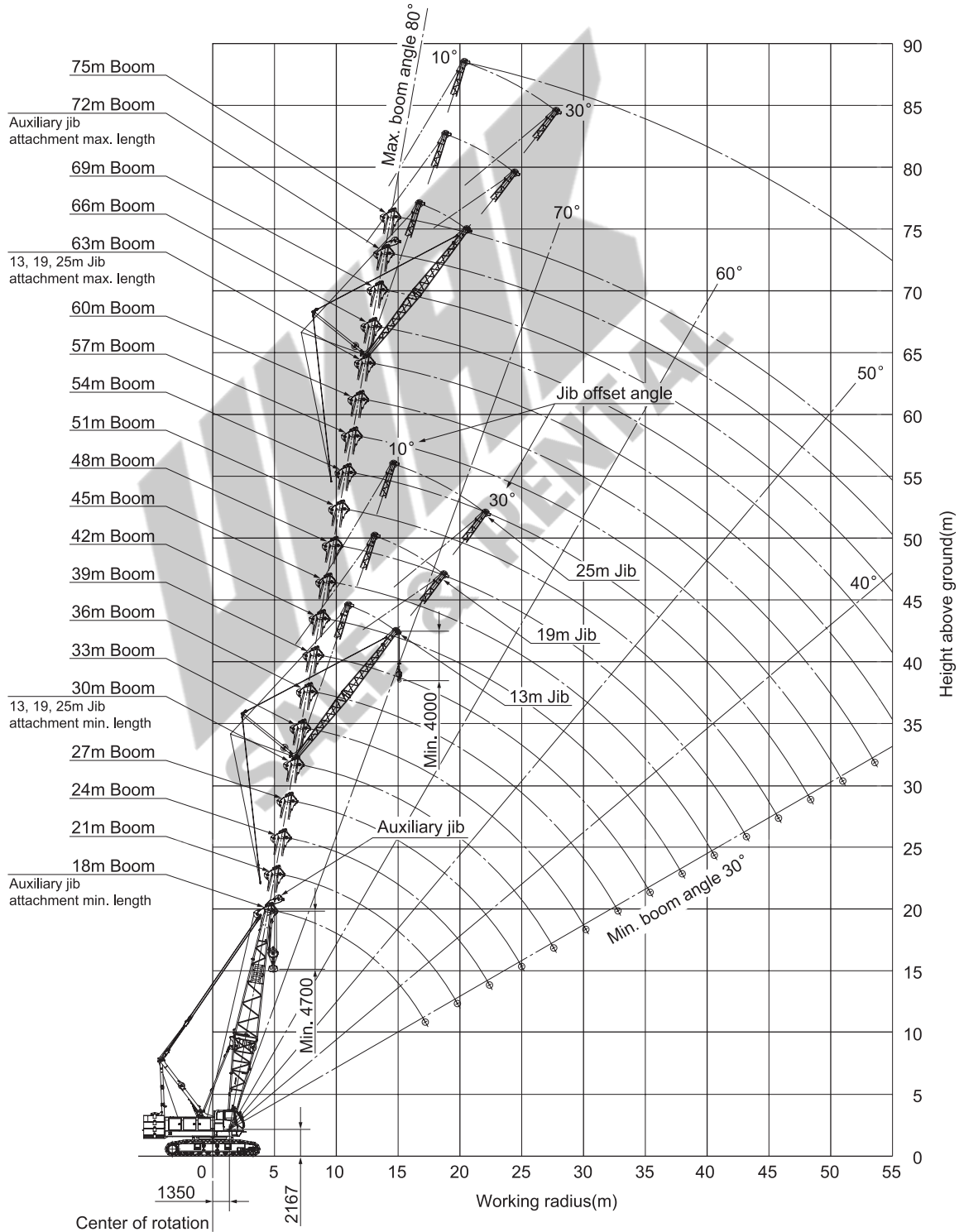
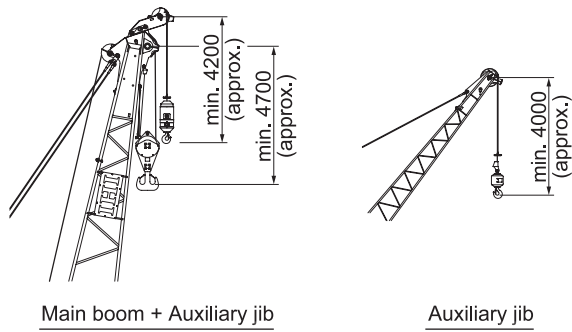
Boom length (m) \ Boom	18	21	24	27	30	33	36	39	42	45
7.5 m Inner	1	1	1	1	1	1	1	1	1	1
3 m Insert	—	1	2	1	2	2	1	2	2	1
6 m Insert	—	—	—	1	1	—	1	1	—	1
9 m Insert	—	—	—	—	—	1	1	1	2	2
10.5 m Outer	1	1	1	1	1	1	1	1	1	1

Boom length (m) \ Boom	48	51	54	57	60	63	66	69	72	75
7.5 m Inner	1	1	1	1	1	1	1	1	1	1
3 m Insert	2	2	1	2	2	1	2	2	1	2
6 m Insert	1	—	1	1	—	1	1	—	1	1
9 m Insert	2	3	3	3	4	4	4	5	5	5
10.5 m Outer	1	1	1	1	1	1	1	1	1	1

## Jib boom composition

Jib length (m) \ Jib	13	19	25
6.5 m Inner	1	1	1
6 m Insert	—	1	2
6.5m Outer	1	1	1

## Working range (No loaded condition)



## ■ Main boom rated lifting loads (with 42.6 ton counterweight)

Unit: metric ton

Boom length(m) Working radius(m)	18.0	21.0	24.0	27.0	30.0	33.0	36.0	39.0	42.0	45.0
5.0	120.0									
5.5	106.7	90.0								
6.0	97.0	90.0	80.0	70.0						
7.0	83.3	81.2	75.0	7.2m× 70.0	7.1m× 60.0	7.6m× 50.0				
8.0	71.7	71.5	67.5	64.0	60.0	50.0	8.1m× 50.0	8.6m× 40.0		
9.0	60.6	60.0	59.7	57.5	54.1	9.5m× 50.0	50.0	40.0	9.2m× 40.0	9.7m× 40.0
10.0	51.8	51.6	51.5	51.0	48.8	47.4	46.0	11.3m× 40.0	11.2m× 40.0	11.0m× 40.0
12.0	40.6	40.4	40.3	40.2	40.0	39.2	38.4	37.8	37.5	37.1
14.0	32.9	32.7	32.6	32.5	32.3	32.2	32.1	31.9	31.8	31.7
16.0	27.6	27.4	27.3	27.2	27.0	26.9	26.8	26.6	26.5	26.4
18.0	17.2m× 25.1	23.4	23.3	23.2	23.0	22.9	22.8	22.6	22.5	22.4
20.0		19.7m× 20.8	20.2	20.1	19.9	19.8	19.7	19.5	19.4	19.3
22.0			17.8	17.7	17.5	17.4	17.3	17.1	17.0	16.9
24.0			22.3m× 17.5	15.8	15.6	15.5	15.4	15.2	15.1	15.0
26.0				24.9m× 15.0	13.9	13.8	13.7	13.5	13.4	13.3
28.0					27.5m× 12.9	12.5	12.4	12.2	12.1	12.0
30.0						11.3	11.2	11.0	10.9	10.8
32.0						30.1m× 11.2	10.2	10.0	9.9	9.8
34.0							32.7m× 9.9	9.1	9.0	8.9
36.0								35.3m× 8.6	8.2	8.1
38.0									37.9m× 7.6	7.4
40.0										6.8
42.0										40.5m× 6.7

Boom length(m) Working radius(m)	48.0	51.0	54.0	57.0	60.0	63.0	66.0	69.0	72.0	75.0
10.0	10.2m× 30.0	10.7m× 30.0	11.2m× 28.3	11.8m× 28.1						
12.0	30.0	30.0	28.3	28.1	12.3m× 20.0	12.8m× 20.0	13.3m× 19.0	13.8m× 16.0		
14.0	14.1m× 30.0	30.0	28.3	28.1	20.0	20.0	19.0	16.0	14.4m× 14.5	14.9m× 13.0
16.0	26.3	26.2	25.1	24.9	20.0	17.4m× 20.0	19.0	16.0	14.5	13.0
18.0	22.3	22.2	22.0	21.9	20.0	19.2	17.9	16.0	14.5	13.0
20.0	19.2	19.1	18.9	18.8	18.2	17.5	16.7	15.2	13.6	11.6
22.0	16.8	16.7	16.5	16.4	16.3	15.8	15.3	14.2	12.6	10.4
24.0	14.9	14.8	14.6	14.5	14.4	14.2	13.8	13.0	11.6	9.4
26.0	13.2	13.1	12.9	12.8	12.7	12.5	12.3	11.9	10.5	8.4
28.0	11.9	11.8	11.6	11.5	11.4	11.2	11.0	10.9	9.6	7.6
30.0	10.7	10.6	10.4	10.3	10.2	10.0	9.8	9.7	8.7	6.9
32.0	9.7	9.6	9.4	9.3	9.2	9.0	8.8	8.6	7.8	6.2
34.0	8.8	8.7	8.5	8.4	8.3	8.1	7.9	7.6	7.1	5.5
36.0	8.0	7.9	7.7	7.6	7.5	7.3	7.1	6.7	6.4	5.0
38.0	7.3	7.2	7.0	6.9	6.8	6.6	6.4	5.9	5.7	4.4
40.0	6.7	6.6	6.4	6.3	6.2	6.0	5.8	5.2	5.0	3.9
42.0	6.2	6.1	5.9	5.8	5.7	5.5	5.2	4.6	4.4	3.5
44.0	43.1m× 5.9	5.6	5.4	5.3	5.2	4.9	4.6	4.2	3.9	3.0
46.0		45.7m× 5.2	4.9	4.8	4.7	4.4	4.1	3.7	3.4	2.6
48.0			4.5	4.4	4.2	3.9	3.6	3.2	2.9	2.2
50.0			48.3m× 4.5	3.9	3.7	3.4	3.1	2.8	2.4	
52.0				50.9m× 3.7	3.3	3.0	2.7	2.4	2.0	
54.0					53.5m× 3.0	2.6	2.3	2.0		

## ■ Aux. jib rated lifting loads (with 42.6 ton counterweight)

Unit: metric ton

Boom length(m) Working radius(m)	18.0	21.0	24.0	27.0	30.0	33.0	36.0	39.0	42.0	45.0
5.5	5.7m× 12.0									
6.0	12.0	6.2m× 12.0	6.7m× 12.0							
7.0	12.0	12.0	12.0	7.2m× 12.0	7.8m× 12.0					
8.0	12.0	12.0	12.0	12.0	12.0	8.3m× 12.0	8.8m× 12.0			
9.0	12.0	12.0	12.0	12.0	12.0	12.0	12.0	9.3m× 12.0	9.8m× 12.0	
10.0	12.0	12.0	12.0	12.0	12.0	12.0	12.0	12.0	12.0	10.4m× 12.0
12.0	12.0	12.0	12.0	12.0	12.0	12.0	12.0	12.0	12.0	12.0
14.0	12.0	12.0	12.0	12.0	12.0	12.0	12.0	12.0	12.0	12.0
16.0	12.0	12.0	12.0	12.0	12.0	12.0	12.0	12.0	12.0	12.0
18.0	12.0	12.0	12.0	12.0	12.0	12.0	12.0	12.0	12.0	12.0
20.0	18.5m× 12.0	12.0	12.0	12.0	12.0	12.0	12.0	12.0	12.0	12.0
22.0		21.1m× 12.0	12.0	12.0	12.0	12.0	12.0	12.0	12.0	12.0
24.0			23.7m× 12.0	12.0	12.0	12.0	12.0	12.0	12.0	12.0
26.0				12.0	12.0	27.6m× 12.0	27.5m× 12.0	27.2m× 12.0	27.0m× 12.0	26.9m× 12.0
28.0				26.3m× 12.0	12.0	11.8	11.7	11.5	11.4	11.3
30.0					28.9m× 12.0	10.6	10.5	10.3	10.2	10.1
32.0						31.5m× 9.8	9.5	9.3	9.2	9.1
34.0							8.6	8.4	8.3	8.2
36.0								7.6	7.5	7.4
38.0								36.6m× 7.4	6.8	6.7
40.0									39.2m× 6.4	6.1
42.0										41.8m× 5.6

Boom length(m) Working radius(m)	48.0	51.0	54.0	57.0	60.0	63.0	66.0	69.0	72.0
10.0	10.9m× 12.0	11.4m× 12.0	11.9m× 12.0						
12.0	12.0	12.0	12.0	12.5m× 12.0	13.0m× 12.0	13.5m× 12.0			
14.0	12.0	12.0	12.0	12.0	12.0	12.0	12.0	14.5m× 12.0	
16.0	12.0	12.0	12.0	12.0	12.0	12.0	12.0	12.0	15.1m× 12.0
18.0	12.0	12.0	12.0	12.0	12.0	12.0	12.0	12.0	12.0
20.0	12.0	12.0	12.0	12.0	12.0	12.0	12.0	12.0	21.8m× 12.0
22.0	12.0	12.0	12.0	12.0	12.0	12.0	12.0	12.0	11.9
24.0	12.0	12.0	12.0	12.0	12.0	25.8m× 12.0	25.5m× 12.0	24.5m× 12.0	10.9
26.0	26.7m× 12.0	26.6m× 12.0	26.3m× 12.0	26.2m× 12.0	12.0	11.8	11.7	11.2	9.8
28.0	11.2	11.1	10.9	10.8	10.7	10.5	10.3	10.2	8.9
30.0	10.0	9.9	9.7	9.6	9.5	9.3	9.1	9.0	8.0
32.0	9.0	8.9	8.7	8.6	8.5	8.3	8.1	7.9	7.1
34.0	8.1	8.0	7.8	7.7	7.6	7.4	7.2	6.9	6.4
36.0	7.3	7.2	7.0	6.9	6.8	6.6	6.4	6.0	5.7
38.0	6.6	6.5	6.3	6.2	6.1	5.9	5.7	5.2	5.0
40.0	6.0	5.9	5.7	5.6	5.5	5.3	5.1	4.5	4.3
42.0	5.5	5.4	5.2	5.1	5.0	4.8	4.6	3.9	3.7
44.0	5.0	4.9	4.7	4.6	4.5	4.3	4.1	3.5	3.2
46.0	44.4m× 4.9	4.4	4.2	4.1	4.0	3.8	3.6	3.0	2.7
48.0		47.0m× 4.2	3.8	3.7	3.6	3.4	3.1	2.5	2.2
50.0			49.6m× 3.5	3.3	3.2	3.0	2.7	2.1	1.7
52.0				3.0	2.9	2.7	2.2	1.7	1.3
54.0				52.2m× 2.9	2.6	2.4	1.8	1.3	

## Jib rated lifting loads (with 42.6 ton counterweight)

Unit: metric ton

Boom length (m)	30.0						33.0						36.0						
Jib length (m)	13.0		19.0		25.0		13.0		19.0		25.0		13.0		19.0		25.0		
Offset angle	10°	30°	10°	30°	10°	30°	10°	30°	10°	30°	10°	30°	10°	30°	10°	30°	10°	30°	
Working radius (m)																			
9.0																			
10.0	11.3m × 12.0							11.8m × 12.0											
12.0	12.0		13.4m × 10.0					12.0		13.9m × 10.0				12.3m × 12.0					
14.0	12.0	15.0m × 8.5	10.0			14.9m × 5.5		12.0	15.6m × 8.5	10.0			15.5m × 5.5	12.0		14.5m × 10.0			
16.0	12.0	8.5	10.0			5.5		12.0	8.5	10.0			5.5	12.0	16.1m × 8.5	10.0			5.5
18.0	12.0	8.5	10.0	18.9m × 6.5		5.5		12.0	8.5	10.0	19.4m × 6.5		5.5	12.0	8.5	10.0	19.9m × 6.5		5.5
20.0	12.0	8.5	10.0	6.5	5.5			12.0	8.5	10.0	6.5	5.5		12.0	8.5	10.0	6.5	5.5	
22.0	12.0	8.5	10.0	6.5	5.5	22.3m × 4.5		12.0	8.5	10.0	6.5	5.5	22.8m × 4.5	12.0	8.5	10.0	6.5	5.5	23.3m × 4.5
24.0	12.0	8.5	10.0	6.5	5.5	4.5		12.0	8.5	10.0	6.5	5.5	4.5	12.0	8.5	10.0	6.5	5.5	4.5
26.0	12.0	8.5	10.0	6.5	5.5	4.5		12.0	8.5	10.0	6.5	5.5	4.5	12.0	8.5	10.0	6.5	5.5	4.5
28.0	28.9m × 12.0	8.5	10.0	6.5	5.5	4.5	28.7m × 12.0	8.5	10.0	6.5	5.5	4.5	28.6m × 12.0	8.5	10.0	6.5	5.5	4.5	
30.0	11.4	8.5	10.0	6.5	5.5	4.5	11.3	8.5	10.0	6.5	5.5	4.5	11.2	8.5	10.0	6.5	5.5	4.5	
32.0	10.4	8.5	32.8m × 10.0	6.5	5.5	4.5	10.3	8.5	32.4m × 10.0	6.5	5.5	4.5	10.2	8.5	32.4m × 10.0	6.5	5.5	4.5	
34.0	9.5	8.5	9.5	6.5	5.5	4.5	9.4	8.5	9.4	6.5	5.5	4.5	9.3	8.5	9.3	6.5	5.5	4.5	
36.0	8.7	36.6m × 8.5	8.7	6.5	5.5	4.5	8.6	36.3m × 8.5	8.6	6.5	5.5	4.5	8.5	36.1m × 8.5	8.5	6.5	5.5	4.5	
38.0	8.0	8.0	8.0	6.5	5.5	4.5	7.9	7.9	7.9	6.5	5.5	4.5	7.8	7.8	7.8	6.5	5.5	4.5	
40.0	7.4	7.4	7.4	6.5	5.5	4.5	7.3	7.3	7.3	6.5	5.5	4.5	7.2	7.2	7.2	6.5	5.5	4.5	
42.0	40.1m × 7.4	41.1m × 7.1	6.9	43.5m × 6.5	5.5	4.5	6.8	6.8	43.1m × 6.5	5.5	4.5	6.7	6.7	6.7	6.7	42.7m × 6.5	5.5	4.5	
44.0			6.4	6.4	5.5	4.5	42.7m × 6.6	43.7m × 6.3	6.3	6.3	5.5	4.5	6.2	6.2	6.2	6.2	5.5	4.5	
46.0			45.8m × 6.0	5.9	5.5	4.5			5.8	5.8	47.5m × 5.5	4.5	45.3m × 5.9	5.7	5.7	5.7	47.0m × 5.5	4.5	
48.0				47.1m × 5.7	5.5	4.5			5.4	5.4	5.4	4.5		46.3m × 5.6	5.3	5.3	5.3	4.5	
50.0					5.1	4.5			48.4m × 5.3	49.7m × 5.1	5.0	4.5			4.9	4.9	4.9	4.5	
52.0					51.2m × 4.9	4.5					4.7	4.5		51.0m × 4.8	4.6	4.6	52.6m × 4.5	4.5	
54.0						53.1m × 4.5					53.8m × 4.4	53.2m × 4.5			52.3m × 4.5	4.3	4.3	4.3	
56.0												55.7m × 4.1					3.9	3.9	
58.0																	56.4m × 3.8	3.6	
60.0																		58.3m × 3.5	

Boom length (m)	39.0						42.0						45.0						
Jib length (m)	13.0		19.0		25.0		13.0		19.0		25.0		13.0		19.0		25.0		
Offset angle	10°	30°	10°	30°	10°	30°	10°	30°	10°	30°	10°	30°	10°	30°	10°	30°	10°	30°	
Working radius (m)																			
9.0																			
10.0																			
12.0	12.8m × 12.0							13.4m × 12.0						13.9m × 12.0					
14.0	12.0		15.0m × 10.0					12.0		15.5m × 10.0				12.0					
16.0	12.0	16.6m × 8.5	10.0			16.5m × 5.5		12.0	17.1m × 8.5	10.0			17.0m × 5.5	12.0	17.6m × 8.5	10.0		17.5m × 5.5	
18.0	12.0	8.5	10.0			5.5		12.0	8.5	10.0			5.5	12.0	8.5	10.0		5.5	
20.0	12.0	8.5	10.0	20.5m × 6.5		5.5		12.0	8.5	10.0	21.0m × 6.5		5.5	12.0	8.5	10.0	21.5m × 6.5		5.5
22.0	12.0	8.5	10.0	6.5	5.5	23.8m × 4.5		12.0	8.5	10.0	6.5	5.5		12.0	8.5	10.0	6.5	5.5	
24.0	12.0	8.5	10.0	6.5	5.5	4.5		12.0	8.5	10.0	6.5	5.5	24.3m × 4.5	12.0	8.5	10.0	6.5	5.5	24.9m × 4.5
26.0	12.0	8.5	10.0	6.5	5.5	4.5		12.0	8.5	10.0	6.5	5.5	4.5	12.0	8.5	10.0	6.5	5.5	4.5
28.0	28.3m × 12.0	8.5	10.0	6.5	5.5	4.5	28.1m × 12.0	8.5	10.0	6.5	5.5	4.5	12.0	8.5	10.0	6.5	5.5	4.5	
30.0	11.0	8.5	10.0	6.5	5.5	4.5	10.9	8.5	31.7m × 10.0	6.5	5.5	4.5	10.8	8.5	31.5m × 10.0	6.5	5.5	4.5	
32.0	10.0	8.5	10.0	6.5	5.5	4.5	9.9	8.5	9.9	6.5	5.5	4.5	9.8	8.5	9.8	6.5	5.5	4.5	
34.0	9.1	35.5m × 8.5	9.1	6.5	5.5	4.5	9.0	35.3m × 8.5	9.0	6.5	5.5	4.5	8.9	35.0m × 8.5	8.9	6.5	5.5	4.5	
36.0	8.3	8.3	8.3	6.5	5.5	4.5	8.2	8.2	8.2	6.5	5.5	4.5	8.1	8.1	8.1	6.5	5.5	4.5	
38.0	7.6	7.6	7.6	6.5	5.5	4.5	7.5	7.5	7.5	6.5	5.5	4.5	7.4	7.4	7.4	6.5	5.5	4.5	
40.0	7.0	7.0	7.0	6.5	5.5	4.5	6.9	6.9	6.9	41.5m × 6.5	5.5	4.5	6.8	6.8	6.8	41.1m × 6.5	5.5	4.5	
42.0	6.5	6.5	6.5	6.5	5.5	4.5	6.4	6.4	6.4	6.4	5.5	4.5	6.3	6.3	6.3	6.3	5.5	4.5	
44.0	6.0	6.0	6.0	6.0	5.5	4.5	5.9	5.9	5.9	5.9	45.6m × 5.5	4.5	5.8	5.8	5.8	5.8	45.2m × 5.5	4.5	
46.0	5.5	5.5	5.5	5.5	4.6m × 5.5	4.5	5.4	5.4	5.4	5.4	4.5	4.5	5.3	5.3	5.3	5.3	5.3	4.5	
48.0	47.9m × 5.1	5.1	5.1	5.1	5.1	4.5	5.0	5.0	5.0	5.0	5.0	4.5	4.9	4.9	4.9	4.9	4.9	4.9	4.5
50.0		48.9m × 4.9	4.7	4.7	4.7	51.3m × 4.5	4.6	4.6	4.6	4.6	4.6	50.7m × 4.5	4.5	4.5	4.5	4.5	4.5	50.2m × 4.5	
52.0			4.4	4.4	4.4	4.4	50.5m × 4.5	51.5m × 4.4	4.3	4.3	4.3	4.3	4.2	4.2	4.2	4.2	4.2	4.2	
54.0			53.6m × 4.1	4.1	4.1	4.1			4.0	4.0	4.0	4.0	53.1m × 4.0	3.9	3.9	3.9	3.9	3.9	
56.0				54.9m × 3.9	3.7	3.7			3.6	3.6	3.6	3.6		54.1m × 3.9	3.5	3.5	3.5	3.5	
58.0					3.4	3.4			56.2m × 3.5	57.5m × 3.4	3.3	3.3			3.2	3.2	3.2	3.2	
60.0					59.0m × 3.2	3.1					3.0	3.0			58.8m × 3.1	2.9	2.9	2.9	



## Jib rated lifting loads (with 42.6 ton counterweight)

Unit: metric ton

Boom length (m)	48.0						51.0						54.0						
Jib length (m)	13.0		19.0		25.0		13.0		19.0		25.0		13.0		19.0		25.0		
Offset angle	10°	30°	10°	30°	10°	30°	10°	30°	10°	30°	10°	30°	10°	30°	10°	30°	10°	30°	
Working radius (m)																			
9.0																			
10.0																			
12.0																			
14.0	14.4m × 12.0						14.9m × 12.0						15.5m × 12.0						
16.0	12.0		16.5m × 10.0				12.0		17.1m × 10.0				12.0		17.6m × 10.0				
18.0	12.0	18.2m × 8.5	10.0		18.1m × 5.5		12.0	18.7m × 8.5	10.0		18.6m × 5.5		12.0	19.2m × 8.5	10.0		19.1m × 5.5		
20.0	12.0	8.5	10.0		5.5		12.0	8.5	10.0		5.5		12.0	8.5	10.0		5.5		
22.0	12.0	8.5	10.0	6.5	5.5		12.0	8.5	10.0	22.6m × 6.5	5.5		12.0	8.5	10.0	23.1m × 6.5	5.5		
24.0	12.0	8.5	10.0	6.5	5.5	25.4m × 4.5	12.0	8.5	10.0	6.5	5.5	25.9m × 4.5	12.0	8.5	10.0	6.5	5.5		
26.0	27.8m × 12.0	8.5	10.0	6.5	5.5	4.5	12.0	8.5	10.0	6.5	5.5	4.5	27.3m × 12.0	8.5	10.0	6.5	5.5	26.4m × 4.5	
28.0	11.9	8.5	10.0	6.5	5.5	4.5	27.6m × 12.0	8.5	10.0	6.5	5.5	4.5	11.6	8.5	10.0	6.5	5.5	4.5	
30.0	10.7	8.5	31.3m × 10.0	6.5	5.5	4.5	10.6	8.5	31.1m × 10.0	6.5	5.5	4.5	10.4	8.5	30.7m × 10.0	6.5	5.5	4.5	
32.0	9.7	8.5	9.7	6.5	5.5	4.5	9.6	8.5	9.6	6.5	5.5	4.5	9.4	8.5	9.4	6.5	5.5	4.5	
34.0	8.8	34.7m × 8.5	8.8	6.5	5.5	4.5	8.7	34.5m × 8.5	8.7	6.5	5.5	4.5	8.5	8.5	8.5	6.5	5.5	4.5	
36.0	8.0	8.0	8.0	6.5	5.5	4.5	7.9	7.9	7.9	6.5	5.5	4.5	7.7	7.7	7.7	6.5	5.5	4.5	
38.0	7.3	7.3	7.3	6.5	5.5	4.5	7.2	7.2	7.2	6.5	5.5	4.5	7.0	7.0	7.0	39.7m × 6.5	5.5	4.5	
40.0	6.7	6.7	6.7	40.8m × 6.5	5.5	4.5	6.6	6.6	6.6	40.4m × 6.5	5.5	4.5	6.4	6.4	6.4	6.4	5.5	4.5	
42.0	6.2	6.2	6.2	6.2	5.5	4.5	6.1	6.1	6.1	6.1	5.5	4.5	5.9	5.9	5.9	5.9	43.5m × 5.5	4.5	
44.0	5.7	5.7	5.7	5.7	44.7m × 5.5	4.5	5.6	5.6	5.6	5.6	44.3m × 5.5	4.5	5.4	5.4	5.4	5.4	5.4	4.5	
46.0	5.2	5.2	5.2	5.2	5.2	4.5	5.1	5.1	5.1	5.1	4.5	4.9	4.9	4.9	4.9	4.9	4.9	4.5	
48.0	4.8	4.8	4.8	4.8	4.8	49.6m × 4.5	4.7	4.7	4.7	4.7	4.7	49.1m × 4.5	4.5	4.5	4.5	4.5	4.5	4.5	48.1m × 4.5
50.0	4.4	4.4	4.4	4.4	4.4	4.4	4.3	4.3	4.3	4.3	4.3	4.3	4.1	4.1	4.1	4.1	4.1	4.1	4.1
52.0	4.1	4.1	4.1	4.1	4.1	4.1	4.0	4.0	4.0	4.0	4.0	4.0	3.8	3.8	3.8	3.8	3.8	3.8	3.8
54.0	3.8	3.8	3.8	3.8	3.8	3.8	3.7	3.7	3.7	3.7	3.7	3.7	3.5	3.5	3.5	3.5	3.5	3.5	3.5
56.0	55.7m × 3.5	3.4	3.4	3.4	3.4	3.4	3.3	3.3	3.3	3.3	3.3	3.3	3.1	3.1	3.1	3.1	3.1	3.1	3.1
58.0		56.7m × 3.3	3.1	3.1	3.1	3.1	3.0	3.0	3.0	3.0	3.0	3.0	2.8	2.8	2.8	2.8	2.8	2.8	2.8
60.0			2.8	2.8	2.8	2.8	58.3m × 2.9	59.3m × 2.8	2.7	2.7	2.7	2.7	2.5	2.5	2.5	2.5	2.5	2.5	2.5

Boom length (m)	57.0						60.0						63.0						
Jib length (m)	13.0		19.0		25.0		13.0		19.0		25.0		13.0		19.0		25.0		
Offset angle	10°	30°	10°	30°	10°	30°	10°	30°	10°	30°	10°	30°	10°	30°	10°	30°	10°	30°	
Working radius (m)																			
9.0																			
10.0																			
12.0																			
14.0																			
16.0	12.0						16.5m × 12.0						17.0m × 12.0						
18.0	12.0	19.7m × 8.5	18.1m × 10.0		19.6m × 5.5		12.0		18.6m × 10.0			12.0		19.1m × 10.0					
20.0	12.0	8.5	10.0		5.5		12.0	20.2m × 8.5	10.0		20.1m × 5.5		12.0	20.8m × 8.5	10.0		20.7m × 5.5		
22.0	12.0	8.5	10.0	23.6m × 6.5	5.5		12.0	8.5	10.0		5.5		12.0	8.5	10.0		5.5		
24.0	12.0	8.5	10.0	6.5	5.5		12.0	8.5	10.0	24.1m × 6.5	5.5		12.0	8.5	10.0	24.6m × 6.5	5.5		
26.0	27.2m × 12.0	8.5	10.0	6.5	5.5	27.0m × 4.5	27.0m × 12.0	8.5	10.0	6.5	5.5	27.5m × 4.5	26.7m × 12.0	8.5	10.0	6.5	5.5		
28.0	11.5	8.5	10.0	6.5	5.5	4.5	11.4	8.5	10.0	6.5	5.5	4.5	11.2	8.5	10.0	6.5	5.5	4.5	
30.0	10.3	8.5	30.5m × 10.0	6.5	5.5	4.5	10.2	8.5	30.4m × 10.0	6.5	5.5	4.5	10.0	8.5	10.0	6.5	5.5	4.5	
32.0	9.3	33.8m × 8.5	9.3	6.5	5.5	4.5	9.2	33.5m × 8.5	9.2	6.5	5.5	4.5	9.0	33.1m × 8.5	9.0	6.5	5.5	4.5	
34.0	8.4	8.4	8.4	6.5	5.5	4.5	8.3	8.3	8.3	6.5	5.5	4.5	8.1	8.1	8.1	6.5	5.5	4.5	
36.0	7.6	7.6	7.6	6.5	5.5	4.5	7.5	7.5	7.5	6.5	5.5	4.5	7.3	7.3	7.3	6.5	5.5	4.5	
38.0	6.9	6.9	6.9	39.4m × 6.5	5.5	4.5	6.8	6.8	6.8	39.1m × 6.5	5.5	4.5	6.6	6.6	6.6	38.4m × 6.5	5.5	4.5	
40.0	6.3	6.3	6.3	6.3	5.5	4.5	6.2	6.2	6.2	6.2	5.5	4.5	6.0	6.0	6.0	6.0	5.5	4.5	
42.0	5.8	5.8	5.8	5.8	43.0m × 5.5	4.5	5.7	5.7	5.7	5.7	42.6m × 5.5	4.5	5.5	5.5	5.5	5.5	5.5	4.5	
44.0	5.3	5.3	5.3	5.3	5.3	4.5	5.2	5.2	5.2	5.2	5.2	4.5	5.0	5.0	5.0	5.0	5.0	4.5	
46.0	4.8	4.8	4.8	4.8	4.8	47.5m × 4.5	4.7	4.7	4.7	4.7	4.7	4.7	4.5	4.5	4.5	4.5	4.5	4.5	46.1m × 4.5
48.0	4.4	4.4	4.4	4.4	4.4	4.4	4.3	4.3	4.3	4.3	4.3	4.3	4.1	4.1	4.1	4.1	4.1	4.1	4.1
50.0	4.0	4.0	4.0	4.0	4.0	4.0	3.9	3.9	3.9	3.9	3.9	3.9	3.7	3.7	3.7	3.7	3.7	3.7	3.7
52.0	3.7	3.7	3.7	3.7	3.7	3.7	3.6	3.6	3.6	3.6	3.6	3.6	3.4	3.4	3.4	3.4	3.4	3.4	3.4
54.0	3.4	3.4	3.4	3.4	3.4	3.4	3.3	3.3	3.3	3.3	3.3	3.3	3.1	3.1	3.1	3.1	3.1	3.1	3.1
56.0	3.0	3.0	3.0	3.0	3.0	3.0	2.9	2.9	2.9	2.9	2.9	2.9	2.7	2.7	2.7	2.7	2.7	2.7	2.7
58.0	2.7	2.7	2.7	2.7	2.7	2.7	2.6	2.6	2.6	2.6	2.6	2.6	2.4	2.4	2.4	2.4	2.4	2.4	2.4
60.0	2.4	2.4	2.4	2.4	2.4	2.4	2.3	2.3	2.3	2.3	2.3	2.3	2.1	2.1	2.1	2.1	2.1	2.1	2.1

## ■ Notes

1. All rated loads are based on the machine being operated on the firm, level, uniformly supporting surface ground, at any point of 360° around the machine within 78% of tipping load and forward stability factor over 1.15.  
Working radius is horizontal distance from center of rotation to a vertical line through the center of gravity of the load.

2. To determine actual lifting loads, the weight of all lifting devices such as hook must be reduced from the lifting loads.

120 ton hook	1,600 kg	50 ton hook	950 kg
80 ton hook	1,200 kg	30 ton hook	1,000 kg
60 ton hook	1,150 kg	12 ton hook	400 kg

3. The following weight must be reduced from the lifting loads to determine rated lifting loads for main boom when the jib is equipped.

Aux. jib	700 kg	19.0 m jib	3,300 kg
13.0 m jib	2,800 kg	25.0 m jib	3,900 kg

4. Depending on the number of part lines, rated lifting loads are limited as follows.

1 part line	up to 12.0 ton	6 part lines	up to 66.0 ton
2 part lines	up to 22.0 ton	7 part lines	up to 77.0 ton
3 part lines	up to 33.0 ton	8 part lines	up to 88.0 ton
4 part lines	up to 44.0 ton	9 part lines	up to 99.0 ton
5 part lines	up to 55.0 ton	10 part lines	up to 120.0 ton

5. The aux. jib can be equipped in the range of boom length from 18 m to 72 m boom. To determine the rated lifting loads, 0.7 ton must be reduced from the lifting loads for each boom length in the lifting load chart. However the max. lifting load should not exceed the 12.0 ton.

6. When the 13 m~25 m jib mounted, the lifting loads to be determined by "Jib Rated Lifting Loads".

7. The total weight of the main hook and the jib hook must be reduced from the rated load when lifting on the jib hook with the main hook being attached.

8. The angle formed by the extension line of main boom and the centerline of jib (offset angle) should not exceed 30 degree while the loads being lifted.

## IHI IHI Construction Machinery Limited

Kishi-Tokai Bldg., 8-4-4 Nishikamata, Ota-ku, Tokyo 144-8577 JAPAN  
Phone: +81-3-5714-8844 Fax: +81-3-5714-8840, 8841

Specifications are subject to change without notice due to technical improvements or modifications.  
Distributed by

