

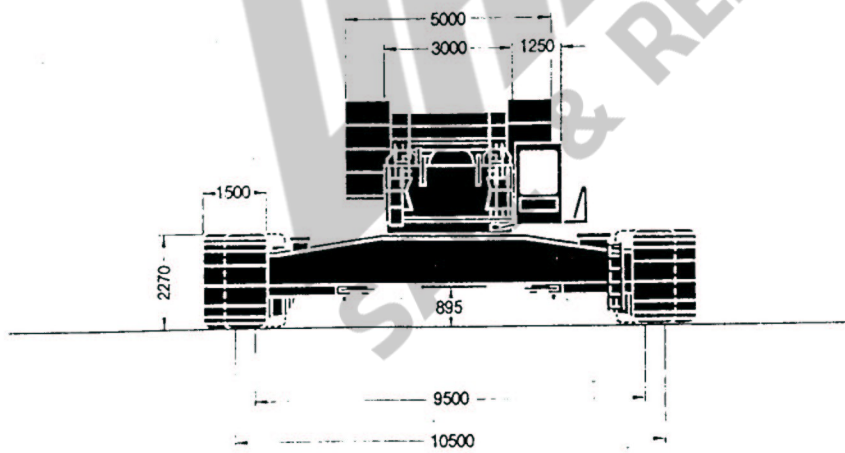
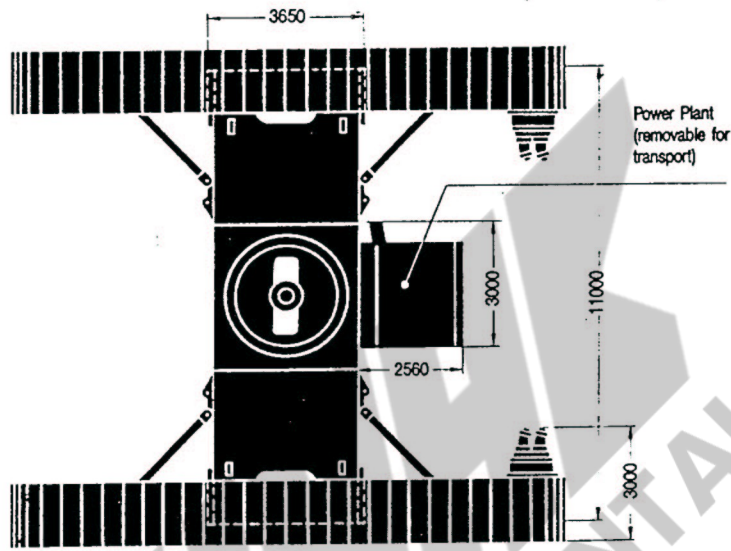
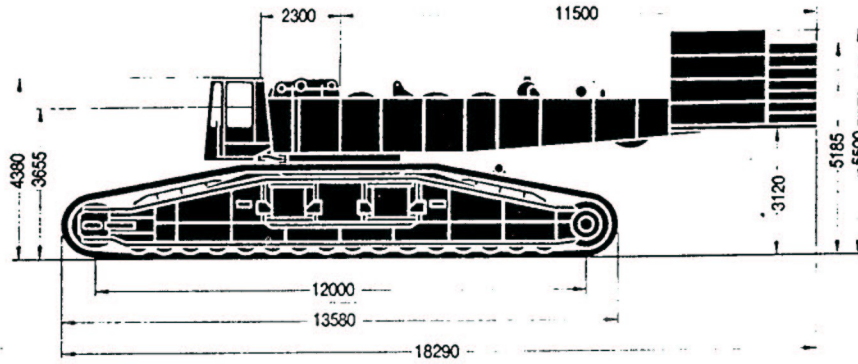
---

# DEMAG CC4000

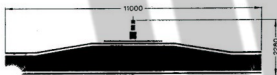
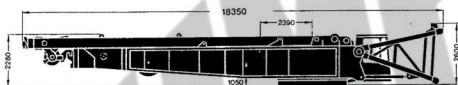


# Dimensions

# DEMAG CC4000



Weight of Counterweighted Machine with 18 m Boom	425 t
Superstructure (with 4 drums, foot section of boom and mast gantry)	77,8 t
Carbody	51,5 t
Crawler Side-Frames	2 x 72,3 t
Counterweight	140 t
Ground Pressure (based on a total weight of 425 t)	(1,18 kp/cm <sup>2</sup> ) 11,8 N/m <sup>2</sup>



1110 x 2200 x 600  
4 x 8,7 t = 34,8 t



1235 x 2200 x 600  
2,3 t



1200 x 5000 x 285  
3 x 8,8 t = 26,4 t



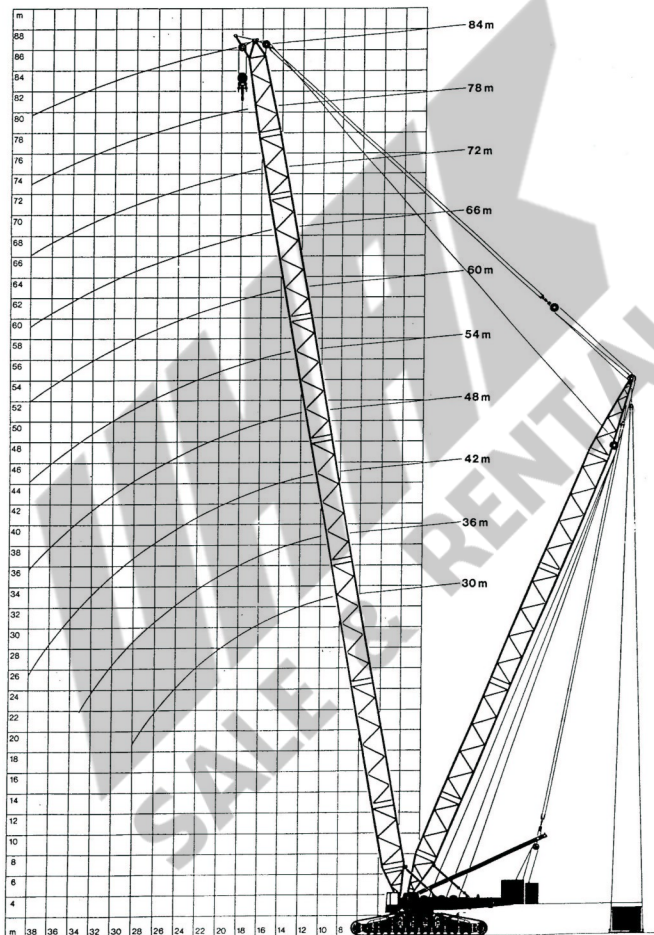
1200 x 5000 x 345  
2 x 8,7 t = 17,4 t




1235 x 2200 x 600  
2,3 t



1110 x 2200 x 600  
4 x 8,7 t = 34,8 t





 10.5-m Track, 140-t Counterweight

75% (360°)

Radius m	Length of Main Boom															
	18 m	24 m	30 m	36 m	42 m	48 m	54 m	60 m	66 m	72 m	78 m	84 m	90 m	96 m	102 m	
6	650**	-	-	-	-	-	-	-	-	-	-	-	-	-	-	
7	570**	500*	-	-	-	-	-	-	-	-	-	-	-	-	-	
8	500*	460*	440*	-	-	-	-	-	-	-	-	-	-	-	-	
9	430*	425*	420*	420*	419*	-	-	-	-	-	-	-	-	-	-	
10	380	375	375*	373*	371*	370*	360*	314*	-	-	-	-	-	-	-	
12	307	305	303	302*	300*	299*	298*	296*	266*	232*	200*	-	-	-	-	
14	258	256	254	253	251*	250*	248*	247*	246*	226*	199*	176*	152*	134*	110	
16	222	220	218	217	215	214*	212*	211*	210*	208*	198*	174*	151*	132*	110	
18	194	192	190	189	188	186	185*	184*	182*	181*	180*	172*	148*	130*	109	
20	-	164	163	162	160	160	159	158	157*	156*	155*	155*	145*	128*	108	
22	-	144	142	141	140	139	138	137	136	135*	134*	134*	133*	125*	106	
24	-	-	126	125	123	122	121	120	119	118	117*	117*	116*	115*	104	
26	-	-	113	112	110	109	108	107	106	105	104	103*	103*	102*	101	
28	-	-	102	101	99	98	97	96	95	94	93	92	91*	91*	90	
30	-	-	-	92	90	89	88	87	86	85	84	83	82	82	81	
34	-	-	-	-	76	75	74	72	71	70	69	69	68	67	66	
38	-	-	-	-	65	64	63	61	60	59	58	58	57	56	55	
42	-	-	-	-	-	56	54	53	52	51	50	49	48	47	46	
46	-	-	-	-	-	-	48	46	45	44	43	42	41	40	39	
50	-	-	-	-	-	-	-	41	39	38	37	36	35	34	33	
54	-	-	-	-	-	-	-	36	35	34	32	31	30	29	28	
58	-	-	-	-	-	-	-	-	31	30	28	27	26	25	24	
62	-	-	-	-	-	-	-	-	-	26	25	24	22	21	20	
66	-	-	-	-	-	-	-	-	-	-	22	21	19	18	17	
70	-	-	-	-	-	-	-	-	-	-	19	18	17	15	14	
74	-	-	-	-	-	-	-	-	-	-	-	16	14	13	12	
78	-	-	-	-	-	-	-	-	-	-	-	-	12	11	10	
82	-	-	-	-	-	-	-	-	-	-	-	-	-	9	8	

\*\* Only with heavy-duty hammer head and 2 x 400t hook-block.

\* Double hook-block required.

Main-boom capacities for 9.5-m track available on request.

Additional combinations and lifting capacities on request.



## Crane Capacity Notes

Gross capacities do not exceed 75% of tipping load and are in conformance with DIN 15019.2 (test load =  $125 \times$  lifting load +  $0.1 \times$  dead weight of boom reduced to boom point).

The weight of hook block and all other load-handling accessories is considered part of the load, and suitable allowance for them should be made.

Crane with maximum length of boom can still operate safely up to a

Wind Pressure of  $60 \text{ N/m}^2$

and a Wind Speed of  $9.8 \text{ m/s}$

Wind Surface of Load  $1 \text{ m}^2$   $\Delta$  load

All capacities above the parting lines in the charts depend on a firm level, uniformly supporting surface. Shorter boom lengths and lower capacities apply to sloping positions and travel over uneven ground.

Loads suspended from the Fly Jib are not allowed to be travelled into position, and limitations on boom length must be observed when travelling without a load over uneven ground.

Consult operation manual for further particulars and higher wind speeds.

While every care has been taken in the preparation of the ratings given in this leaflet, and all reasonable steps have been taken to check the accuracy of the information, Decalift cannot accept responsibility for any inaccuracy in respect of any matters arising out of, or in connection with the use of these tables.