

**KOBELCO**

**HYDRAULIC CRAWLER CRANE**  
***CKE900***

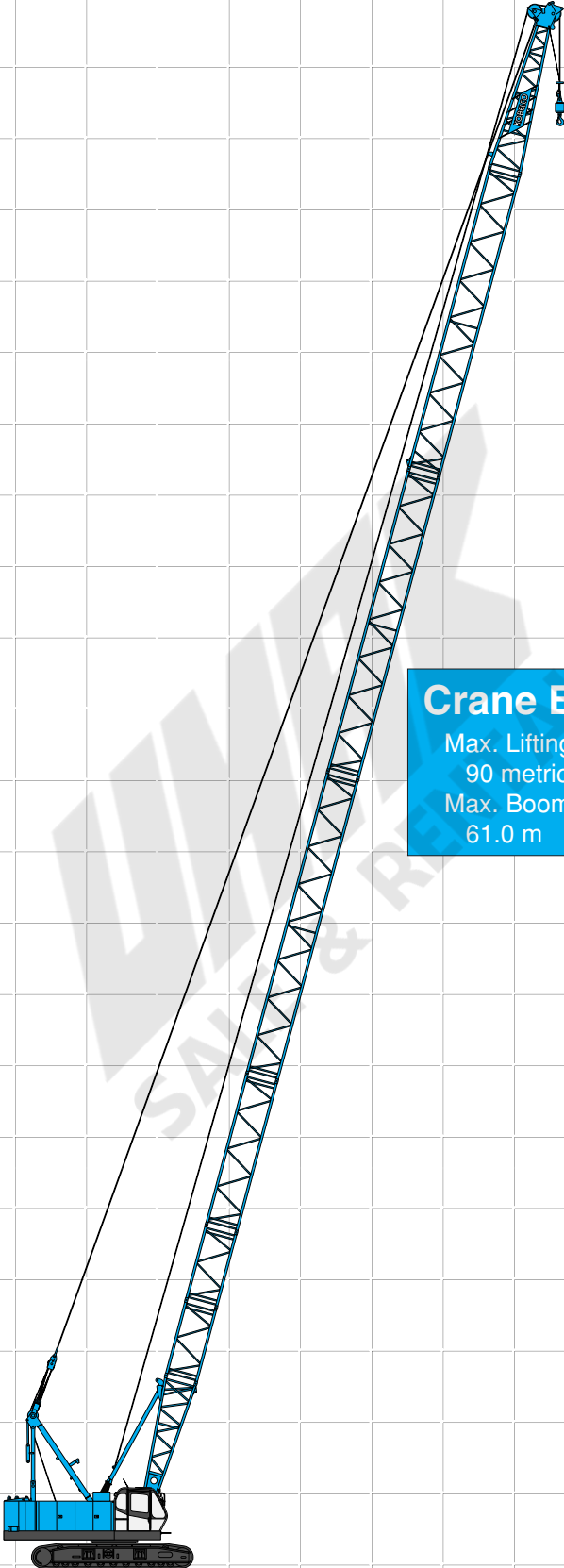
Model: CKE900-1F




**Max. Lifting Capacity: 90 t x 3.4 m\***  
**Max. Crane Boom Length: 61.0 m**  
**Max. Fixed Jib Combination: 51.8 m + 18.3 m**

\*Auxiliary sheave is necessary.

# CONFIGURATION

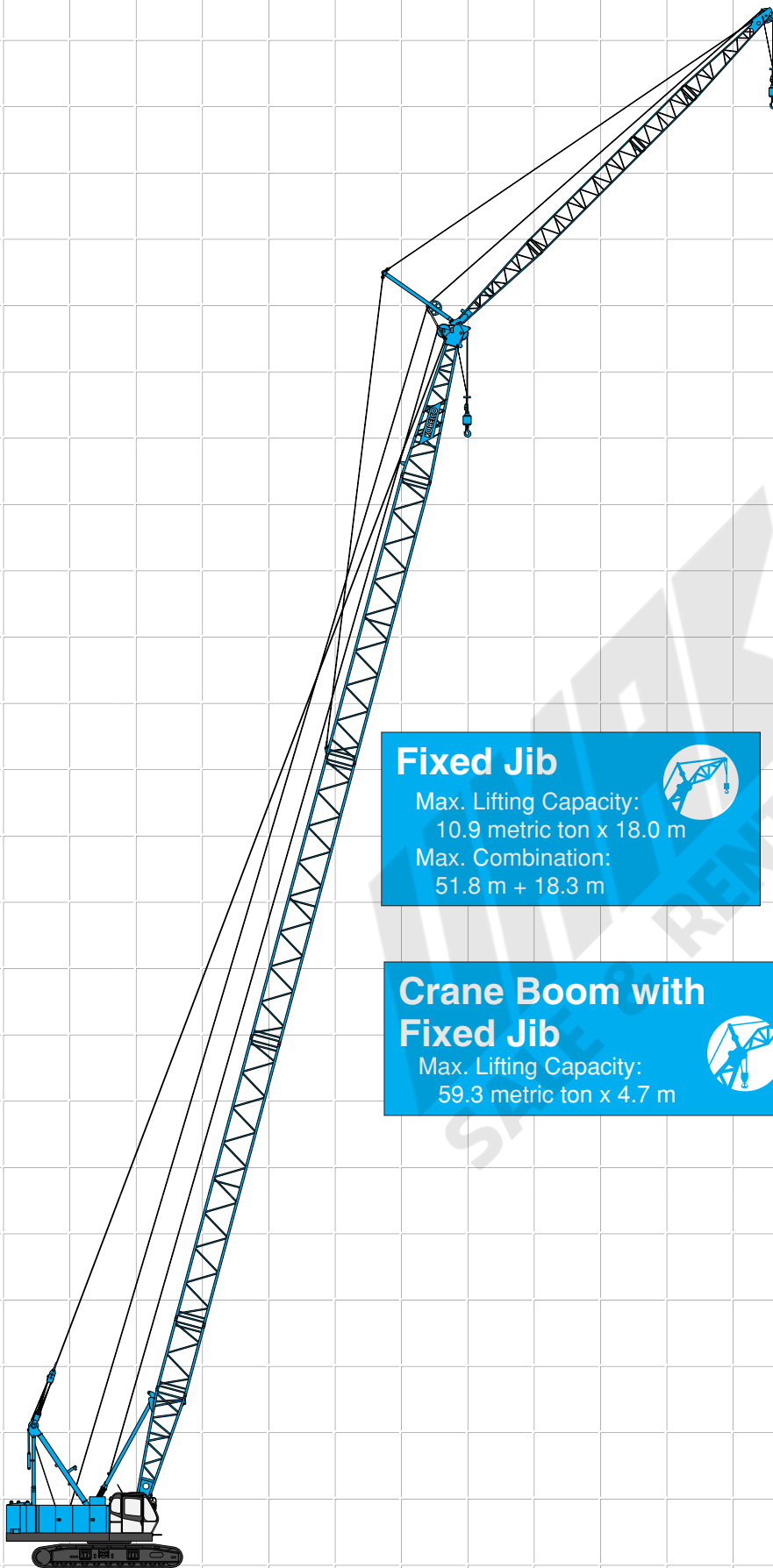


**Crane Boom** 

Max. Lifting Capacity:  
90 metric ton x 3.4 m\*

Max. Boom Length:  
61.0 m

\*Auxiliary sheave is necessary.



**Fixed Jib**  
 Max. Lifting Capacity:  
 10.9 metric ton x 18.0 m  
 Max. Combination:  
 51.8 m + 18.3 m



**Crane Boom with  
 Fixed Jib**  
 Max. Lifting Capacity:  
 59.3 metric ton x 4.7 m



## CONTENTS

- Configuration ..... 1
- Specifications ..... 3
- General Dimensions ..... 5
- Boom and Jib Arrangements
  - Crane Boom Arrangements ..... 6
  - Fixed Jib Arrangements ..... 6
- Working Ranges and Lifting Capacities
  - Crane Boom Working Ranges ..... 8
  - Crane Boom Lifting Capacity ..... 9
  - Auxiliary Sheave Lifting Capacity for Crane Boom ..... 10
  - Fixed Jib Working Ranges ..... 12
  - Fixed Jib Lifting Capacities ..... 13
  - Crane Boom Lifting Capacity with Fixed Jib ..... 15
- Parts and Attachments ... 17

# SPECIFICATIONS



## Power Plant

**Model:** Hino diesel engine P11C-UN  
**Type:** Water-cooled, direct fuel injection, with turbocharger  
Complies with NRMM (Europe) Stage IIIA and US EPA Tier III.  
**Displacement:** 10.520 liters  
**Rated Power:** 247kW/ 2,000 min<sup>-1</sup> {rpm} (ISO)  
**Max. torque:** 1,300 N-m/1,500 min<sup>-1</sup>  
**Cooling system:** Liquid, re-circulating bypass  
**Starter:** 24V / 6.0 kW  
**Radiator:** Corrugated type core, thermostatically controlled  
**Air cleaner:** Dry type with replaceable paper element  
**Throttle:** Electric throttle control, twist grip type  
**Fuel filter:** Replaceable paper element  
**Batteries:** Two 12 volt, 170 Ah/20 HR capacity series connected  
**Fuel tank capacity:** 400 liters



## Hydraulic System

Three variable displacement piston pumps are driven by heavy-duty pump drive. Two of variable displacement pumps are used in the main hook hoist circuit, boom hoist circuit, auxiliary hook hoist circuit, third hoist circuit and each propel circuit. The other is used in the swing circuit.

**Control:** Full-flow hydraulic control system for infinitely variable pressure to front and rear drums, boom hoist brakes and clutches. Controls respond instantly to the touch, delivering smooth function operation.

**Cooling:** Oil-to-air heat exchanger (plate-fin type)

**Filtration:** Full-flow and bypass type with replaceable paper element

**Electrical system:** All wiring corded for easy servicing, individual fused branch circuits.

### Max. relief valve pressure:

**Load hoist, boom hoist and propel system:**

31.9 MPa {325 kgf/cm<sup>2</sup>}

**Swing system:** 27.5 MPa {280 kgf/cm<sup>2</sup>}

**Control system:** 7.0 MPa {71 kgf/cm<sup>2</sup>}

**Reservoir capacity:** 440 liters



## Boom Hoisting System

Powered by a hydraulic motor through a planetary reducer.

**Brake:** A spring-set, hydraulically released multiple-disc brake is mounted on the boom hoist motor and operated through a counter-balance valve.

**Drum lock:** External ratchet for locking drum.

**Drum:** Single drum, grooved for 16 mm dia. wire rope.

**Line speed:** Single on first drum layer

**Hoisting/Lowering:** 70 to 2 m/min

### Diameter of wire ropes

**Boom guy line:** 30 mm

**Boom hoist reeving:** 12 parts of 16 mm dia. high strength wire rope

**Boom backstops:** Required for all boom lengths



## Load Hoist System

Front and rear drums for load hoist powered by a hydraulic variable plunger motors, driven through planetary reducers.

**Positive Free-Fall Brake:** Forced circulation oil-cooled wet-type multi-disc brake is mounted on the hoist motor.

**Drum lock:** External ratchet for locking drum.

### Drums:

#### Front drum:

614 mm P.C.D. x 617 mm wide drum, grooved for 26 mm wire rope. Rope capacity is 240 m working length and 300 m storage length.

#### Rear drum:

614 mm P.C.D. x 617 mm wide drum, grooved for 26 mm wire rope. Rope capacity is 165 m working length and 300 m storage length.

Note: Rope lengths listed above denote drum capacity and may differ from actual rope lengths supplied when machinery is shipped.

**Line speed:** Single line on the first drum layer

**Hoisting/Lowering:** 120 to 3 m/min

**Line Pull (Single-line):**

**Rated line pull:** 111.8 kN {11.4 tf}



## Swing System

Swing unit is powered by hydraulic motor driving spur gear through planetary reducer, the swing system provides 360° rotation.

**Swing parking brakes:** A spring-set, hydraulically released multiple-disc brake is mounted on swing motor.

**Swing circle:** Single-row ball bearing with an integral internally cut swing gear.

**Swing lock:** Manually, two position lock for transportation

**Swing speed:** 4.0 min<sup>-1</sup> {rpm}



## Upper Structure

Torsion-free precision machined upper frame. All components are located clearly and service friendly. Engine with low noise level. Complies with EC Directive 2000/14/EC.

**Counterweight:** 28.8 ton



## Cab & Control

Totally enclosed, full vision cab with safety glass, fully adjustable, high backed seat with a head-rest and armrests, and intermittent wiper and window washer (skylight and front window).

### Cab fittings:

Air conditioner, convenient compartment (for tool), cup holder, ashtray, cigarette lighter, sun visor, roof blind, tinted glass, floor mat, foot-rest, shoe tray

### Controls:

Four adjustable levers for front drum, rear drum, boom drum and swing controls, and boom hoist pedal.



## Lower Structure

Steel-welded carbody with axles. Crawler assemblies can be hydraulically extended for wide-track operation or retracted for transportation. Crawler belt tension is maintained by hydraulic jack force on the track-adjusting bearing block.

**Carbody weight:** 7.3 ton

**Crawler drive:** Independent hydraulic propel drive is built into each crawler side frame. Each drive consists of a hydraulic motor propelling a driving tumbler through a planetary gear box. Hydraulic motor and gear box are built into the crawler side frame within the shoe width.

**Crawler brakes:** Spring-set, hydraulically released parking brakes are built into each propel drive.

**Steering mechanism:** A hydraulic propel system provides both skid steering (driving one track only) and counter-rotating steering (driving each track in opposite directions).

**Track rollers:** Sealed track rollers for maintenance-free operation.

**Shoes (flat):** 66 shoes, 800 mm wide each crawler

**Max. Travel speed:** 1.9/1.2 km/h

**Max. gradeability:** 40%



## Weight

Including upper and lower machine, 28.8 ton counterweight, 7.3 ton carbody weight basic boom (or basic jib), hook, and other accessories.

Specification	Weight	Ground pressure
<b>Crane boom</b>	Approx. 82.1 ton,	92.1 kPa {0.94 kgf/cm <sup>2</sup> }
<b>Fixed jib</b>	Approx. 83.8 ton,	94.2 kPa {0.96 kgf/cm <sup>2</sup> }



## Attachment

### Boom and Jib:

Welded lattice construction using tubular, high-tensile steel chords with pin connections between sections.

Boom Jib Length

	Min. Length (Min. Combination)	Max. Length (Max. Combination)
Crane Boom	12.2 m	61.0 m
Fixed Jib	24.4 m + 9.1 m	51.8 m + 18.3 m

## Main Specifications (Model: CKE900-1F)

Crane Boom	
Max. Lifting Capacity	90 t / 3.4 m***
Max. Length	61.0 m
Fixed Jib	
Max. Lifting Capacity	10.9 t / 18.0 m
Max. Length	18.3 m
Max. Combination	51.8 m + 18.3 m
Main & Aux. Winch	
Max. Line Speed	120 m/min (1st layer)
Rated Line Pull (Single Line)	112 kN {11.4 tf}
Wire Rope	26 mm
Wire Rope Length	240 m (Main) 165 m (Aux.)
Brake Type	Wet-type multiple disc brake
Working Speed	
Swing Speed	4.0 min <sup>-1</sup> {rpm}
Travel Speed	1.9/1.2 km/h

Power Plant	
Model	Hino P11C-UN
Engine Output	247 kW/2,000 min <sup>-1</sup> {rpm}
Fuel Tank Capacity	400 liters
Hydraulic System	
Main Pumps	3 variable displacement
Max. Pressure	31.9 MPa {325 kgf/cm <sup>2</sup> }
Hydraulic Tank Capacity	440 liters
Self-Removal Device	
Standard counterweight removal	
Weight	
Operating Weight*	Approx. 82.1 t
Ground Pressure*	92.1 kPa {0.94 kgf/cm <sup>2</sup> }
Counterweight	28.8 t (Upper), 7.3 t (Lower)
Transport Weight**	Approx. 44.7 t

Units are SI units. { } indicates conventional units.

\* Including upper and lower machine, 28.8 ton counterweight, 7.3 ton carbody weight, basic boom, hook, and other accessories.

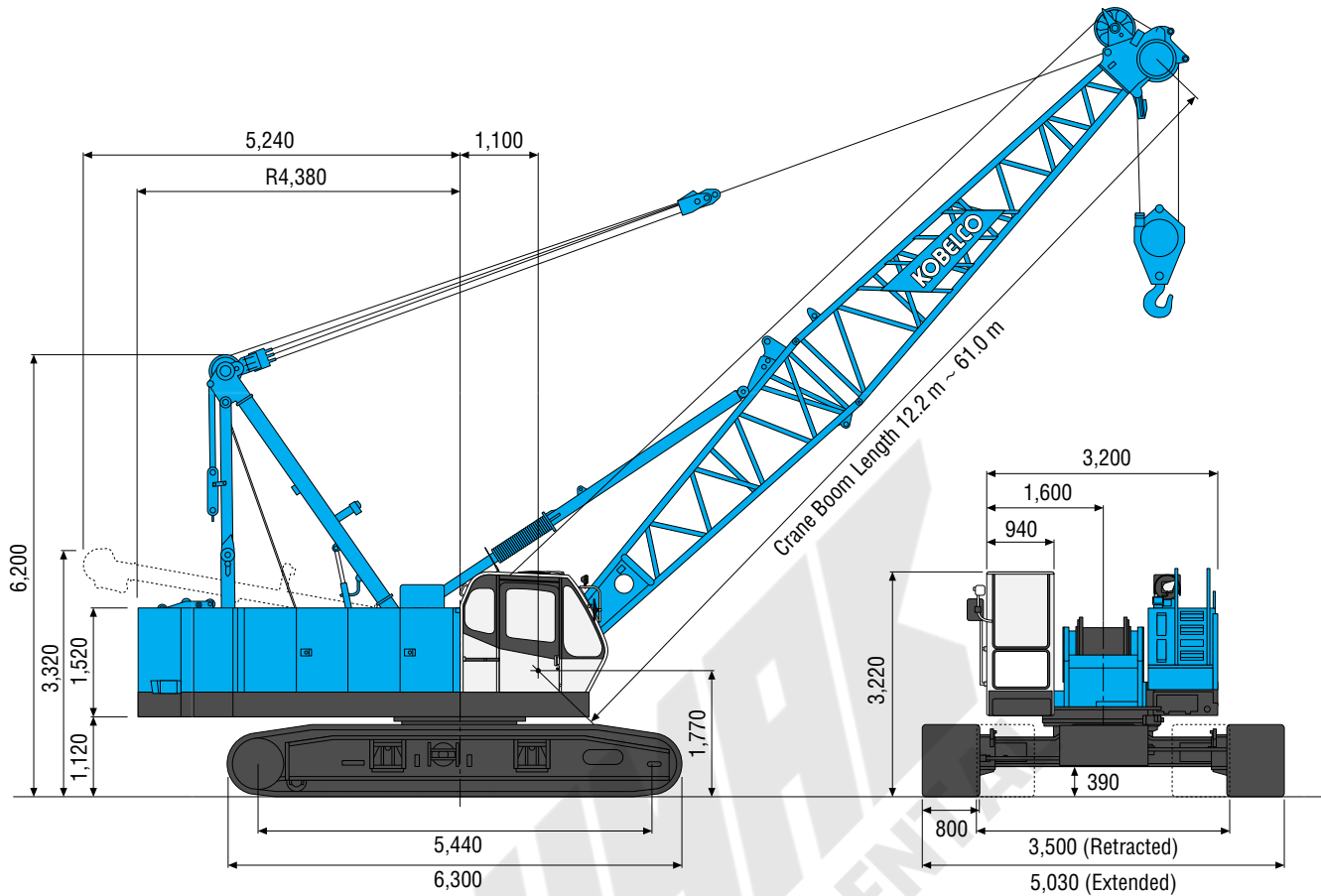
\*\* Base machine with gantry, boom base, crawlers, wire ropes for main and aux. winches, lower spreader and upper spreader (Refer to P17)

\*\*\*Auxiliary sheave is necessary.

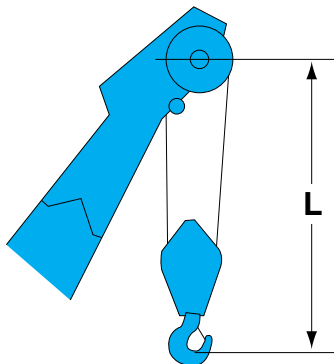
# GENERAL DIMENSIONS

## Crane Boom

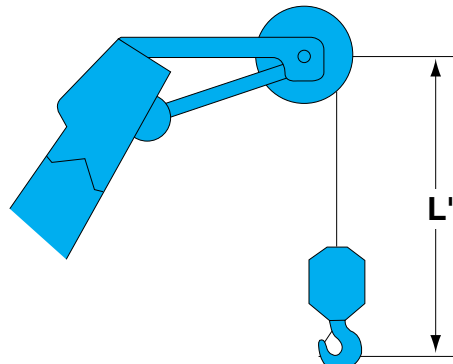
(Unit: mm)



## Limit of Hook Lifting



Hook	L
90 t hook	4.1 m
70 t hook	4.1 m
50 t hook	4.0 m
35 t hook	3.9 m



Hook	L'
11 t ball hook	3.5 m
11 t swivel hook	3.3 m

# BOOM AND JIB ARRANGEMENTS

## Crane Boom Arrangements

Boom length m (ft)	Boom arrangement
12.2 (40)	
15.2 (50)	
18.3 (60)	
21.3 (70)	
24.4 (80)	
27.4 (90)	
30.5 (100)	
33.5 (110)	
36.6 (120)	
39.6 (130)	

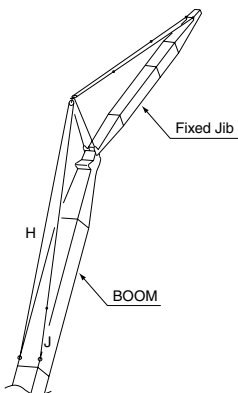
Boom length m (ft)	Boom arrangement
42.7 (140)	
45.7 (150)	
48.8 (160)	
51.8 (170)	
54.9 (180)	
57.9 (190)	
61.0 (200)	

Symbol	Boom Length	Remarks
	5.8 m	Boom Base
	6.4 m	Boom Top
	3.0 m	Insert Boom
	6.1 m	Insert Boom
	12.2 m	Insert Boom
	12.2 m	Insert Boom with lug

↗ mark shows the guy line installing position when the fixed jib is used.

※ Indicates the most flexible combination of insert booms, which can be modified to form all shorter boom arrangements.

## Fixed Jib Arrangements



Crane boom length	Jib length m (ft)	Jib arrangement
24.4 m } 51.8 m	9.1 (30)	
	12.2 (40)	
	15.2 (50)	
	18.3 (60)	

Symbol	Jib Length	Remarks
	4.6 m	Jib Base
	4.6 m	Jib Top
	3.0 m	Insert Jib
	6.1 m	Insert Jib



## Hook Blocks

A range of hook blocks can be specified, each with a safety latch.

Hooks	Weight (kg)	No. of sheaves	No. of lines and max. rated loads (tons)							
			1	2	3	4	5	6	7	8
90-ton	1,300	4	—	—	—	45.6	57.0	68.4	79.8	90.0
70-ton	900	3	—	—	34.2	45.6	57.0	68.4	70.0	—
50-ton	850	3	—	22.8	34.2	45.6	50.0	—	—	—
35-ton	700	1	—	22.8	34.2	—	—	—	—	—
11-ton ball hook	290	0	11.0	—	—	—	—	—	—	—
11-ton swivel hook	100	0	11.0	—	—	—	—	—	—	—

## Symbols for Attachments:



Crane Boom

Auxiliary Sheave  
for Crane Boom

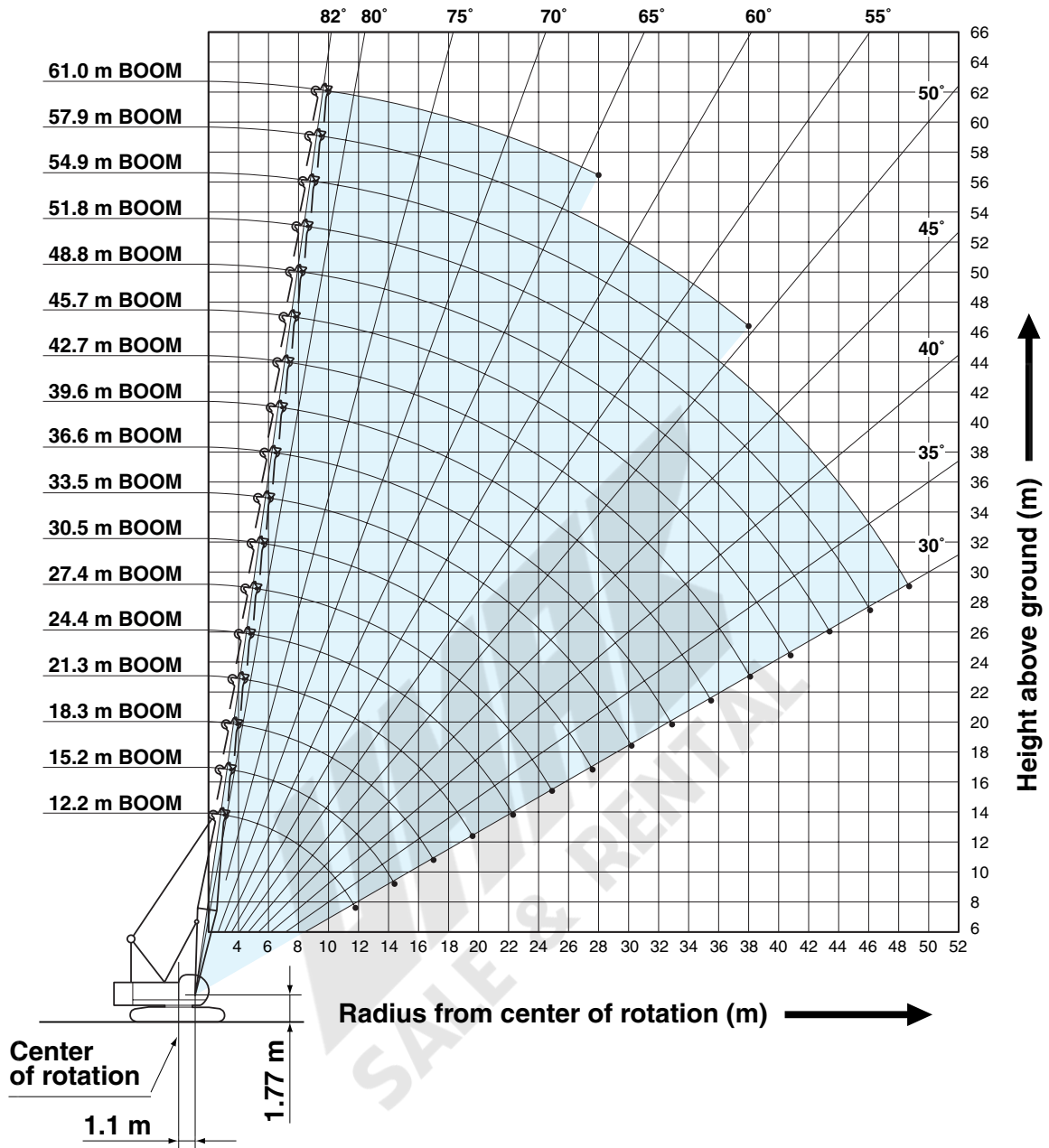
Fixed Jib

Crane Boom  
with Fixed Jib



# WORKING RANGES AND LIFTING CAPACITIES

## Crane Boom Working Ranges



### NOTES:

1. Ratings according to EN13000.
2. Ratings in metric tons for 360° working area.
3. Operating radius is the horizontal distance from center of rotation to a vertical line through the center of gravity of the load.
4. Weight of hook block (s), slings and other load handling accessories is included in rated load. Their total weight must be subtracted from rated load to obtain weight that can be lifted.
5. Ratings shown are based on freely suspended loads and make no allowance for such factors as wind effect on lifted load, ground conditions, out-of-level, operating speeds or any other condition that could be detrimental to the safe operation of this equipment. Operator, therefore, has the responsibility to judge the existing conditions and reduce lifted loads and operating speeds accordingly.
6. Ratings are for operation on a firm and level surface, up to 1% gradient.
7. At radii and boom lengths where no ratings are shown on chart, operation is not intended nor approved.
8. Boom inserts and guy lines must be arranged as shown in the "Operator's Manual".
9. Boom hoist reeving is 12 part line.
10. Gantry must be in raised position for all conditions.
11. Boom backstops are required for all boom lengths.
12. Crawler frames must be fully extended for all crane operations.
13. Ratings shown in  are determined by the strength of the boom or other structural component.
14. Instruction in the "Operator's Manual" must be strictly observed when operating the machine.
15. Crane boom ratings: Deduct weight of main hook block, slings, and all other load handling accessories from crane boom ratings shown.
16. Auxiliary sheave ratings for crane boom: Deduct weight of ball hook, slings, and all other load handling accessories from auxiliary sheave ratings for crane boom shown.
17. Crane boom lengths for auxiliary sheave mounting are 12.2 m to 57.9 m.



# Crane Boom Lifting Capacity

Unit: metric ton

Counterweight: 28.8 t, Carbody weight: 7.3 t

Working radius (m)	Boom Length (m)													Working radius (m)
	12.2	15.2	18.3	21.3	24.4	27.4	30.5	33.5	36.6	39.6	42.7	45.7		
3.0	90.0*	3.4m/90.0	3.9m/72.4											3.0
4.0	78.0	77.8	72.4	4.3m/72.4	4.7m/60.9									4.0
5.0	63.2	63.0	62.8	62.1	59.0	5.1m/49.2	5.6m/47.9							5.0
6.0	53.0	52.8	52.7	50.3	48.2	46.3	44.4	42.6	6.4m/37.3	6.8m/34.8				6.0
7.0	45.6	45.4	44.0	42.2	40.6	39.2	37.8	36.5	35.3	34.1	7.3m/31.7	7.7m/29.1		7.0
8.0	38.1	38.3	37.7	36.3	35.1	34.0	32.8	31.8	30.8	29.8	28.9	28.0		8.0
9.0	32.1	32.5	32.4	31.8	30.8	29.9	28.9	28.1	27.3	26.5	25.7	25.0		9.0
10.0	27.1	28.1	28.0	27.9	27.4	26.7	25.8	25.1	24.5	23.8	23.1	22.5		10.0
12.0	11.8m/19.6	22.1	22.0	21.8	21.7	21.7	21.2	20.7	20.2	19.6	19.1	18.6		12.0
14.0		17.1	18.0	17.9	17.7	17.7	17.5	17.4	17.1	16.6	16.1	15.8		14.0
16.0		14.4m/16.1	15.2	15.0	14.9	14.8	14.7	14.6	14.5	14.3	13.9	13.6		16.0
18.0			17.0m/13.4	12.9	12.8	12.7	12.5	12.5	12.4	12.2	12.1	11.9		18.0
20.0				19.6m/11.3	11.2	11.1	10.9	10.8	10.7	10.6	10.4	10.4		20.0
22.0					9.9	9.8	9.6	9.5	9.4	9.3	9.1	9.0		22.0
24.0					22.3m/9.7	8.7	8.5	8.4	8.3	8.2	8.1	8.0		24.0
26.0						24.9m/8.3	7.6	7.6	7.5	7.3	7.2	7.1		26.0
28.0							27.6m/7.1	6.8	6.7	6.6	6.4	6.3		28.0
30.0								6.2	6.1	5.9	5.8	5.7		30.0
32.0								30.2m/6.1	5.5	5.4	5.2	5.1		32.0
34.0									32.9m/5.3	4.9	4.7	4.7		34.0
36.0										35.5m/4.6	4.3	4.2		36.0
38.0											4.0	3.9		38.0
40.0											38.1m/3.9	3.5		40.0
42.0												40.8m/3.4		42.0
Reeves	8	8	7	7	6	5	5	4	4	4	3	3	Reeves	

Working radius (m)	Boom Length (m)					Working radius (m)
	48.8	51.8	54.9	57.9	61.0	
8.0	8.1m/23.4	8.5m/18.5				8.0
9.0	22.3	18.1	14.0	9.4m/9.4	9.8m/6.4	9.0
10.0	21.2	17.1	13.2	9.0	6.3	10.0
12.0	18.2	15.4	11.8	7.9	5.5	12.0
14.0	15.4	14.0	10.6	7.0	4.7	14.0
16.0	13.3	12.9	9.6	6.3	4.1	16.0
18.0	11.6	11.3	8.8	5.6	3.5	18.0
20.0	10.3	10.0	8.0	5.0	3.0	20.0
22.0	9.0	8.9	7.3	4.5	2.6	22.0
24.0	7.9	7.8	6.7	4.0	2.2	24.0
26.0	7.0	6.9	6.2	3.5	1.8	26.0
28.0	6.3	6.1	5.7	3.1	1.5	28.0
30.0	5.6	5.5	5.2	2.8		30.0
32.0	5.1	4.9	4.8	2.4		32.0
34.0	4.6	4.4	4.3	2.1		34.0
36.0	4.1	4.0	3.9	1.8		36.0
38.0	3.8	3.6	3.5	1.5		38.0
40.0	3.4	3.3	3.1			40.0
42.0	3.1	3.0	2.8			42.0
44.0	43.4m/2.9	2.7	2.6			44.0
46.0		2.4	2.3			46.0
48.0		46.1m/2.4	2.0			48.0
50.0			48.7m/1.9			50.0
Reeves	3	2	2	1	1	Reeves

Note:  
 Ratings according to EN13000.  
 Ratings shown in   are determined by the strength of the boom or other structural components.  
 Refer to notes P8.

\*Auxiliary sheave is necessary.



# Auxiliary Sheave Lifting Capacity for Crane Boom (Without Main Hook)

Unit: metric ton

Counterweight: 28.8 t, Carbody weight: 7.3 t

Working radius (m)	Boom Length (m)													Working radius (m)
	12.2	15.2	18.3	21.3	24.4	27.4	30.5	33.5	36.6	39.6	42.7	45.7		
5.0	11.0	11.0	11.0	11.0	11.0									5.0
6.0	11.0	11.0	11.0	11.0	11.0	11.0	11.0							6.0
7.0	11.0	11.0	11.0	11.0	11.0	11.0	11.0	11.0	11.0	11.0				7.0
8.0	11.0	11.0	11.0	11.0	11.0	11.0	11.0	11.0	11.0	11.0	11.0	11.0		8.0
9.0	11.0	11.0	11.0	11.0	11.0	11.0	11.0	11.0	11.0	11.0	11.0	11.0	11.0	9.0
10.0	11.0	11.0	11.0	11.0	11.0	11.0	11.0	11.0	11.0	11.0	11.0	11.0	11.0	10.0
12.0	11.8m/11.0	11.0	11.0	11.0	11.0	11.0	11.0	11.0	11.0	11.0	11.0	11.0	11.0	12.0
14.0		11.0	11.0	11.0	11.0	11.0	11.0	11.0	11.0	11.0	11.0	11.0	11.0	14.0
16.0		14.4m/11.0	11.0	11.0	11.0	11.0	11.0	11.0	11.0	11.0	11.0	11.0	11.0	16.0
18.0			17.0m/11.0	11.0	11.0	11.0	11.0	11.0	11.0	11.0	11.0	11.0	11.0	18.0
20.0				19.6m/11.0	11.0	10.9	10.7	10.6	10.5	10.4	10.2	10.2	10.2	20.0
22.0					9.7	9.6	9.4	9.3	9.2	9.1	8.9	8.8	8.8	22.0
24.0					22.3m/9.5	8.5	8.3	8.2	8.1	8.0	7.9	7.8	7.8	24.0
26.0						24.9m/8.1	7.4	7.4	7.3	7.1	7.0	6.9	6.9	26.0
28.0							27.6m/6.9	6.6	6.5	6.4	6.2	6.1	6.1	28.0
30.0								6.0	5.9	5.7	5.6	5.5	5.5	30.0
32.0								30.2m/5.9	5.3	5.2	5.0	4.9	4.9	32.0
34.0									32.9m/5.1	4.7	4.5	4.5	4.5	34.0
36.0										35.5m/4.4	4.1	4.0	4.0	36.0
38.0											3.8	3.7	3.7	38.0
40.0											38.1m/3.7	3.3	3.3	40.0
42.0												40.8m/3.2	3.2	42.0
Reeves	1	1	1	1	1	1	1	1	1	1	1	1	1	Reeves

Working radius (m)	Boom Length (m)				Working radius (m)
	48.8	51.8	54.9	57.9	
9.0	11.0	11.0			9.0
10.0	11.0	11.0	11.0	8.8	10.0
12.0	11.0	11.0	11.0	7.7	12.0
14.0	11.0	11.0	10.4	6.8	14.0
16.0	11.0	11.0	9.4	6.1	16.0
18.0	11.0	11.0	8.6	5.4	18.0
20.0	10.1	9.8	7.8	4.8	20.0
22.0	8.8	8.7	7.1	4.3	22.0
24.0	7.7	7.6	6.5	3.8	24.0
26.0	6.8	6.7	6.0	3.3	26.0
28.0	6.1	5.9	5.5	2.9	28.0
30.0	5.4	5.3	5.0	2.6	30.0
32.0	4.9	4.7	4.6	2.2	32.0
34.0	4.4	4.2	4.1	1.9	34.0
36.0	3.9	3.8	3.7	1.6	36.0
38.0	3.6	3.4	3.3		38.0
40.0	3.2	3.1	2.9		40.0
42.0	2.9	2.8	2.6		42.0
44.0	43.4m/2.7	2.5	2.4		44.0
46.0		2.2	2.1		46.0
48.0		46.1m/2.2	1.8		48.0
50.0			48.7m/1.7		50.0
Reeves	1	1	1	1	Reeves

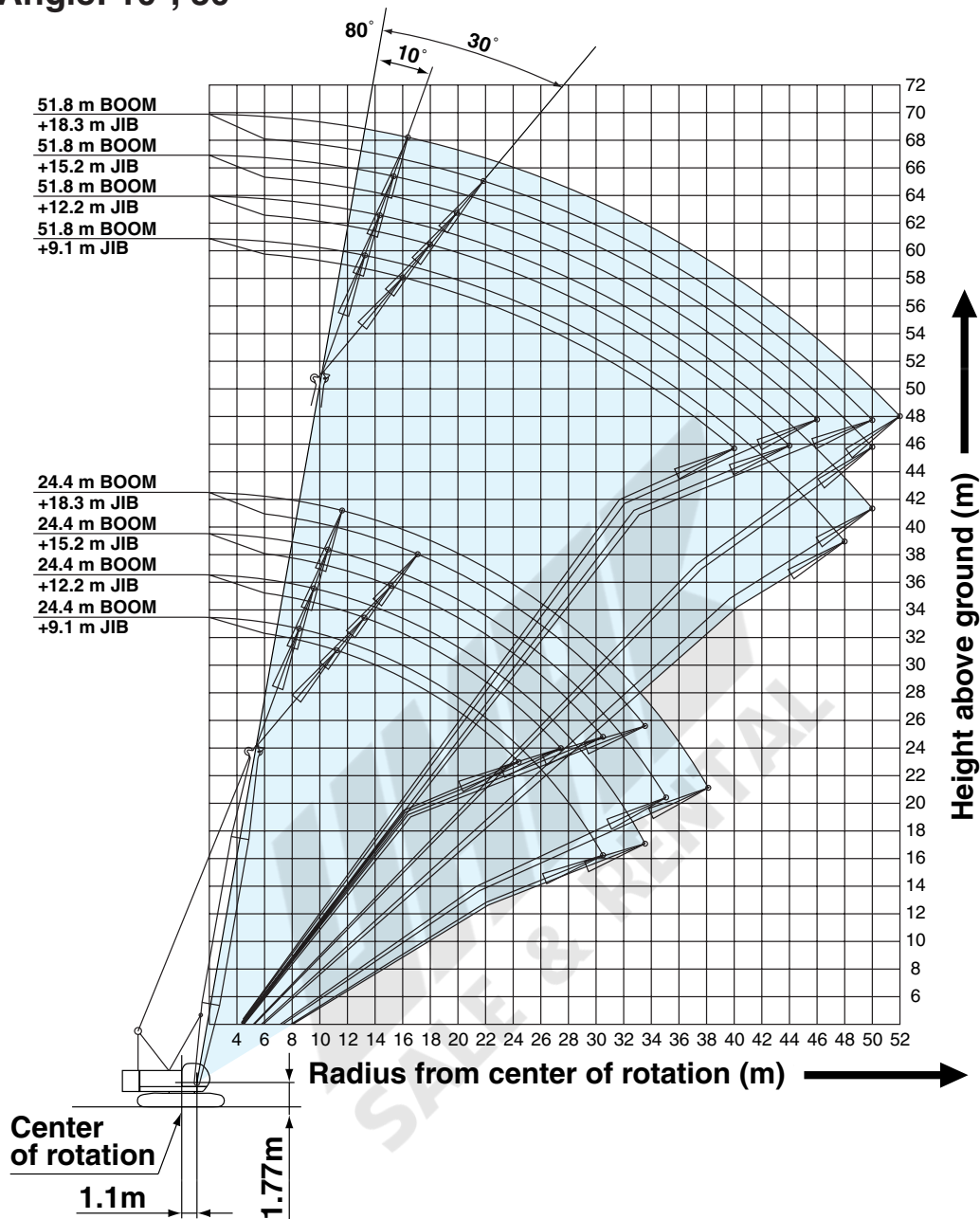
Note:  
 Ratings according to EN13000.  
 Ratings shown in   are determined by the strength of the boom or other structural components.  
 Refer to notes P8.

Blank lined writing area with horizontal lines for text entry.



# Fixed Jib Working Ranges

Jib Offset Angle: 10°, 30°



## NOTES:

1. Ratings according to EN13000.
2. Ratings in metric tons for 360° working area.
3. Operating radius is the horizontal distance from center of rotation to a vertical line through the center of gravity of the load.
4. Weight of hook block (s), slings and other load handling accessories is included in rated load. Their total weight must be subtracted from rated load to obtain weight that can be lifted.
5. Ratings shown are based on freely suspended loads and make no allowance for such factors as wind effect on lifted load, ground conditions, out-of-level, operating speeds or any other condition that could be detrimental to the safe operation of this equipment. Operator, therefore, has the responsibility to judge the existing conditions and reduce lifted loads and operating speeds accordingly.
6. Ratings are for operation on a firm and level surface, up to 1% gradient.
7. At radii and boom lengths where no ratings are shown on chart, operation is not intended nor approved.
8. Boom inserts and guy lines must be arranged as shown in the "Operator's Manual".
9. Boom hoist reeving is 12 part line.
10. Gantry must be in raised position for all conditions.
11. Boom backstops are required for all boom lengths.
12. Crawler frames must be fully extended for all crane operations.
13. Ratings shown in  are determined by the strength of the boom or other structural component.
14. Instruction in the "Operator's Manual" must be strictly observed when operating the machine.
15. Fixed jib ratings: Deduct weight of jib hook block, slings, and all other load handling accessories from fixed jib ratings shown.
16. Crane boom lengths for fixed jib mounting are 24.4 m to 51.8 m.
17. Crane boom ratings with fixed jib: Deduct weight of jib hook block, slings, and all other load handling accessories from crane boom ratings with fixed jib shown.



# Fixed Jib Lifting Capacities (Without Main Hook)

Unit: metric ton

Jib Offset Angle: 10°

Counterweight: 28.8 t, Carbody weight: 7.3 t

Boom length (m)	24.4				30.5				36.6				42.7				Boom length (m)
Jib length (m)	9.1	12.2	15.2	18.3	9.1	12.2	15.2	18.3	9.1	12.2	15.2	18.3	9.1	12.2	15.2	18.3	Jib length (m)
9.0	10.9																9.0
10.0	10.9				10.9												10.0
12.0	10.9	10.9	9.0		10.9	10.9			10.9								12.0
14.0	10.9	10.9	9.0	8.1	10.9	10.9	9.0	8.1	10.9	10.9	9.0		10.9	10.9			14.0
16.0	10.9	10.5	8.7	7.7	10.9	10.9	9.0	8.1	10.9	10.9	9.0	8.1	10.9	10.9	9.0		16.0
18.0	10.9	9.5	7.8	6.8	10.9	10.6	8.7	7.5	10.9	10.9	9.0	8.1	10.9	10.9	9.0	8.1	18.0
20.0	10.3	8.6	7.1	6.2	10.1	9.7	7.9	6.8	9.9	10.0	8.6	7.4	9.6	9.8	9.0	7.9	20.0
22.0	9.0	7.8	6.5	5.6	8.8	8.9	7.2	6.2	8.6	8.7	8.0	6.8	8.4	8.5	8.5	7.3	22.0
24.0	8.0	7.2	5.9	5.1	7.8	8.0	6.6	5.7	7.5	7.7	7.3	6.2	7.3	7.5	7.6	6.7	24.0
26.0	7.2	6.7	5.5	4.7	7.0	7.1	6.2	5.3	6.7	6.9	6.8	5.8	6.5	6.7	6.7	6.3	26.0
28.0	6.5	6.2	5.1	4.4	6.3	6.4	5.7	4.9	6.1	6.2	6.2	5.4	5.8	5.9	6.0	5.8	28.0
30.0	5.9	5.8	4.8	4.1	5.7	5.8	5.4	4.6	5.5	5.5	5.7	5.0	5.2	5.3	5.4	5.4	30.0
32.0		5.5	4.5	3.8	5.2	5.3	5.1	4.3	5.0	5.0	5.1	4.7	4.7	4.8	4.9	4.9	32.0
34.0			4.2	3.6	4.7	4.8	4.8	4.0	4.5	4.6	4.7	4.4	4.3	4.3	4.4	4.5	34.0
36.0				3.4		4.4	4.5	3.8	4.1	4.2	4.2	4.2	3.8	3.9	4.0	4.0	36.0
38.0				3.2		4.0	4.1	3.6	3.8	3.8	3.9	3.9	3.5	3.6	3.6	3.7	38.0
40.0							3.8	3.4	3.4	3.5	3.6	3.6	3.2	3.3	3.3	3.3	40.0
42.0								3.3		3.2	3.3	3.3	2.9	3.0	3.0	3.1	42.0
44.0								3.1			3.0	3.1	2.5	2.7	2.8	2.8	44.0
46.0												2.8	2.2	2.3	2.5	2.6	46.0
48.0												2.4		2.0	2.2	2.3	48.0
50.0														1.9	2.0		50.0
52.0															1.7		52.0
Reeves	1	1	1	1	1	1	1	1	1	1	1	1	1	1	1	1	Reeves

Boom length (m)	48.8				51.8				Boom length (m)
Jib length (m)	9.1	12.2	15.2	18.3	9.1	12.2	15.2	18.3	Jib length (m)
14.0	10.9				10.9				14.0
16.0	10.9	10.9			10.9	10.9			16.0
18.0	10.8	10.9	9.0	8.1	10.7	10.8	9.0	8.1	18.0
20.0	9.5	9.6	9.0	8.1	9.4	9.5	9.0	8.1	20.0
22.0	8.2	8.4	8.5	7.8	8.1	8.3	8.3	8.0	22.0
24.0	7.2	7.3	7.4	7.2	7.1	7.2	7.3	7.4	24.0
26.0	6.3	6.5	6.6	6.7	6.2	6.4	6.5	6.6	26.0
28.0	5.7	5.8	5.9	5.9	5.6	5.7	5.8	5.8	28.0
30.0	5.1	5.2	5.2	5.3	5.0	5.1	5.1	5.2	30.0
32.0	4.6	4.6	4.7	4.8	4.4	4.5	4.6	4.7	32.0
34.0	4.1	4.2	4.3	4.3	4.0	4.1	4.2	4.2	34.0
36.0	3.7	3.8	3.8	3.9	3.6	3.6	3.7	3.8	36.0
38.0	3.4	3.4	3.5	3.5	3.3	3.3	3.4	3.4	38.0
40.0	3.0	3.1	3.2	3.2	2.9	3.0	3.0	3.1	40.0
42.0	2.8	2.8	2.9	2.9	2.7	2.7	2.8	2.8	42.0
44.0	2.5	2.5	2.6	2.6	2.3	2.4	2.5	2.5	44.0
46.0	2.2	2.2	2.4	2.4	2.1	2.1	2.2	2.3	46.0
48.0	1.8	1.9	2.1	2.1	1.7	1.8	1.9	2.0	48.0
50.0	1.4	1.6	1.8	1.9		1.5	1.6	1.7	50.0
52.0			1.5	1.6				1.5	52.0
Reeves	1	1	1	1	1	1	1	1	Reeves

Note:  
 Ratings according to EN13000.  
 Ratings shown in   are determined by the strength of the boom or other structural components.  
 Refer to notes P12.

Unit: metric ton

# Jib Offset Angle: 30°

Counterweight: 28.8 t, Carbody weight: 7.3 t

Boom length (m)	24.4				30.5				36.6				42.7				Boom length (m)	
Jib length (m)	9.1	12.2	15.2	18.3	9.1	12.2	15.2	18.3	9.1	12.2	15.2	18.3	9.1	12.2	15.2	18.3	Jib length (m)	
Working radius (m)	12.0	9.5															12.0	
	14.0	9.3	6.9		9.5				9.5								14.0	
	16.0	8.6	6.4		9.0	6.7			9.4				9.5				16.0	
	18.0	8.0	5.9	4.8	8.6	6.2	5.0		9.0	6.5			9.4	6.7			18.0	
	20.0	7.5	5.6	4.5	3.8	8.0	5.9	4.7	3.9	8.5	6.2	4.9	4.1	8.9	6.4	5.1		20.0
	22.0	7.1	5.3	4.2	3.6	7.6	5.6	4.4	3.7	8.1	5.9	4.6	3.9	8.4	6.1	4.8	4.0	22.0
	24.0	6.8	5.0	4.0	3.4	7.3	5.3	4.2	3.5	7.7	5.6	4.4	3.7	7.6	5.8	4.6	3.8	24.0
	26.0		4.8	3.8	3.2	7.0	5.1	4.0	3.3	7.0	5.4	4.2	3.5	6.7	5.6	4.4	3.6	26.0
	28.0			3.6	3.0	6.4	4.9	3.8	3.1	6.2	5.1	4.0	3.3	6.0	5.4	4.2	3.4	28.0
	30.0			3.5	2.9		4.7	3.7	3.0	5.6	4.9	3.8	3.2	5.3	5.2	4.0	3.3	30.0
	32.0				2.8			3.6	2.9	5.1	4.8	3.7	3.1	4.8	5.0	3.9	3.2	32.0
	34.0								2.8		4.6	3.6	3.0	4.4	4.5	3.8	3.1	34.0
	36.0								2.7			3.5	2.9	3.9	4.1	3.7	3.0	36.0
	38.0											3.4	2.8		3.7	3.6	2.9	38.0
	40.0												2.7			3.5	2.8	40.0
42.0																2.7	42.0	
44.0																2.6	44.0	
Reeves	1	1	1	1	1	1	1	1	1	1	1	1	1	1	1	1	Reeves	

Boom length (m)	48.8				51.8				Boom length (m)	
Jib length (m)	9.1	12.2	15.2	18.3	9.1	12.2	15.2	18.3	Jib length (m)	
Working radius (m)	18.0	9.5			9.5				18.0	
	20.0	9.2	6.6	5.1	9.3	6.6			20.0	
	22.0	8.5	6.3	4.9	4.1	8.5	6.4	5.0	22.0	
	24.0	7.5	6.0	4.7	3.9	7.5	6.1	4.8	3.9	24.0
	26.0	6.6	5.8	4.5	3.7	6.6	5.9	4.6	3.8	26.0
	28.0	5.9	5.6	4.3	3.6	5.9	5.7	4.4	3.6	28.0
	30.0	5.2	5.4	4.1	3.4	5.2	5.4	4.2	3.5	30.0
	32.0	4.7	4.9	4.0	3.3	4.7	4.8	4.1	3.4	32.0
	34.0	4.2	4.4	3.9	3.2	4.2	4.3	4.0	3.3	34.0
	36.0	3.9	3.9	3.8	3.1	3.7	3.8	3.9	3.2	36.0
	38.0	3.5	3.6	3.7	3.0	3.3	3.5	3.6	3.1	38.0
	40.0		3.2	3.4	2.9	3.0	3.2	3.3	3.0	40.0
	42.0		2.9	3.0	2.8		2.9	3.0	2.9	42.0
	44.0			2.7	2.7		2.6	2.7	2.6	44.0
	46.0				2.6			2.4	2.4	46.0
48.0				2.3				2.2	48.0	
50.0								2.0	50.0	
Reeves	1	1	1	1	1	1	1	1	Reeves	

Note:  
 Ratings according to EN13000.  
 Ratings shown in   are determined by the strength of the boom or other structural components.  
 Refer to notes P12.



# Crane Boom Lifting Capacity with Fixed Jib

Unit: metric ton

Counterweight: 28.8 t, Carbody weight: 7.3 t

Boom length (m)	24.4				27.4				30.5				33.5				Boom length (m)
Jib length (m)	9.1	12.2	15.2	18.3	9.1	12.2	15.2	18.3	9.1	12.2	15.2	18.3	9.1	12.2	15.2	18.3	Jib length (m)
4.0	4.7m/59.3	4.7m/58.9	4.7m/58.5	4.7m/58.0													4.0
5.0	57.4	57.0	56.6	56.1	5.1m/47.6	5.1m/47.2	5.1m/46.8	5.1m/46.3	5.6m/46.3	5.6m/45.9	5.6m/45.5	5.6m/45.0					5.0
6.0	46.6	46.2	45.8	45.3	44.7	44.3	43.9	43.4	42.8	42.4	42.0	41.5	41.0	40.6	40.2	39.7	6.0
7.0	39.0	38.6	38.2	37.7	37.6	37.2	36.8	36.3	36.2	35.8	35.4	34.9	34.9	34.5	34.1	33.6	7.0
8.0	33.5	33.1	32.7	32.2	32.4	32.0	31.6	31.1	31.2	30.8	30.4	29.9	30.2	29.8	29.4	28.9	8.0
9.0	29.2	28.8	28.4	27.9	28.3	27.9	27.5	27.0	27.3	26.9	26.5	26.0	26.5	26.1	25.7	25.2	9.0
10.0	25.8	25.4	25.0	24.5	25.1	24.7	24.3	23.8	24.2	23.8	23.4	22.9	23.5	23.1	22.7	22.2	10.0
12.0	20.1	19.7	19.3	18.8	20.1	19.7	19.3	18.8	19.6	19.2	18.8	18.3	19.1	18.7	18.3	17.8	12.0
14.0	16.1	15.7	15.3	14.8	16.1	15.7	15.3	14.8	15.9	15.5	15.1	14.6	15.8	15.4	15.0	14.5	14.0
16.0	13.3	12.9	12.5	12.0	13.2	12.8	12.4	11.9	13.1	12.7	12.3	11.8	13.0	12.6	12.2	11.7	16.0
18.0	11.2	10.8	10.4	9.9	11.1	10.7	10.3	9.8	10.9	10.5	10.1	9.6	10.9	10.5	10.1	9.6	18.0
20.0	9.6	9.2	8.8	8.3	9.5	9.1	8.7	8.2	9.3	8.9	8.5	8.0	9.2	8.8	8.4	7.9	20.0
22.0	8.3	7.9	7.5	7.0	8.2	7.8	7.4	6.9	8.0	7.6	7.2	6.7	7.9	7.5	7.1	6.6	22.0
24.0	22.3m/8.1	22.3m/7.7	22.3m/7.3	22.3m/6.8	7.1	6.7	6.3	5.8	6.9	6.5	6.1	5.6	6.8	6.4	6.0	5.5	24.0
26.0					24.9m/6.7	24.9m/6.3	24.9m/5.9	24.9m/5.4	6.0	5.6	5.2	4.7	6.0	5.6	5.2	4.7	26.0
28.0									27.6m/5.5	27.6m/5.1	27.6m/4.7	27.6m/4.2	5.2	4.8	4.4	3.9	28.0
30.0													4.6	4.2	3.8	3.3	30.0
32.0													30.2m/4.5	30.2m/4.1	30.2m/3.7	30.2m/3.2	32.0
<b>Reeves</b>	6	6	6	6	5	5	5	5	5	5	4	4	4	4	4	4	<b>Reeves</b>

Boom length (m)	36.6				39.6				42.7				45.7				Boom length (m)
Jib length (m)	9.1	12.2	15.2	18.3	9.1	12.2	15.2	18.3	9.1	12.2	15.2	18.3	9.1	12.2	15.2	18.3	Jib length (m)
6.0	6.4m/35.7	6.4m/35.3	6.4m/34.9	6.4m/34.4	6.8m/33.2	6.8m/32.8	6.8m/32.4	6.8m/31.9									6.0
7.0	33.7	33.3	32.9	32.4	32.5	32.1	31.7	31.2	7.3m/30.1	7.3m/29.7	7.3m/29.3	7.3m/28.8	7.7m/27.5	7.7m/27.1	7.7m/26.7	7.7m/26.2	7.0
8.0	29.2	28.8	28.4	27.9	28.2	27.8	27.4	26.9	27.3	26.9	26.5	26.0	26.4	26.0	25.6	25.1	8.0
9.0	25.7	25.3	24.9	24.4	24.9	24.5	24.1	23.6	24.1	23.7	23.3	22.8	23.4	23.0	22.6	22.1	9.0
10.0	22.9	22.5	22.1	21.6	22.2	21.8	21.4	20.9	21.5	21.1	20.7	20.2	20.9	20.5	20.1	19.6	10.0
12.0	18.6	18.2	17.8	17.3	18.0	17.6	17.2	16.7	17.5	17.1	16.7	16.2	17.0	16.6	16.2	15.7	12.0
14.0	15.5	15.1	14.7	14.2	15.0	14.6	14.2	13.7	14.5	14.1	13.7	13.2	14.2	13.8	13.4	12.9	14.0
16.0	12.9	12.5	12.1	11.6	12.7	12.3	11.9	11.4	12.3	11.9	11.5	11.0	12.0	11.6	11.2	10.7	16.0
18.0	10.8	10.4	10.0	9.5	10.6	10.2	9.8	9.3	10.5	10.1	9.7	9.2	10.3	9.9	9.5	9.0	18.0
20.0	9.1	8.7	8.3	7.8	9.0	8.6	8.2	7.7	8.8	8.4	8.0	7.5	8.8	8.4	8.0	7.5	20.0
22.0	7.8	7.4	7.0	6.5	7.7	7.3	6.9	6.4	7.5	7.1	6.7	6.2	7.4	7.0	6.6	6.1	22.0
24.0	6.7	6.3	5.9	5.4	6.6	6.2	5.8	5.3	6.5	6.1	5.7	5.2	6.4	6.0	5.6	5.1	24.0
26.0	5.9	5.5	5.1	4.6	5.7	5.3	4.9	4.4	5.6	5.2	4.8	4.3	5.5	5.1	4.7	4.2	26.0
28.0	5.1	4.7	4.3	3.8	5.0	4.6	4.2	3.7	4.8	4.4	4.0	3.5	4.7	4.3	3.9	3.4	28.0
30.0	4.5	4.1	3.7	3.2	4.3	3.9	3.5	3.0	4.2	3.8	3.4	2.9	4.1	3.7	3.3	2.8	30.0
32.0	3.9	3.5	3.1	2.6	3.8	3.4	3.0	2.5	3.6	3.2	2.8	2.3	3.5	3.1	2.7	2.2	32.0
34.0	32.9m/3.7	32.9m/3.3	32.9m/2.9	32.9m/2.4	3.3	2.9	2.5	2.0	3.1	2.7	2.3	1.8	3.1	2.7	2.3	1.8	34.0
36.0					35.5m/3.0	35.5m/2.6	35.5m/2.2	35.5m/1.7	2.7	2.3	1.9	1.4	2.6	2.2	1.8		36.0
38.0									2.4	2.0	1.6		2.3	1.9	1.5		38.0
40.0									38.1m/2.3	38.1m/1.9	38.1m/1.5		1.9	1.5			40.0
42.0													40.8m/1.8	40.8m/1.4			42.0
<b>Reeves</b>	4	4	4	4	3	3	3	3	3	3	3	3	3	3	3	3	<b>Reeves</b>

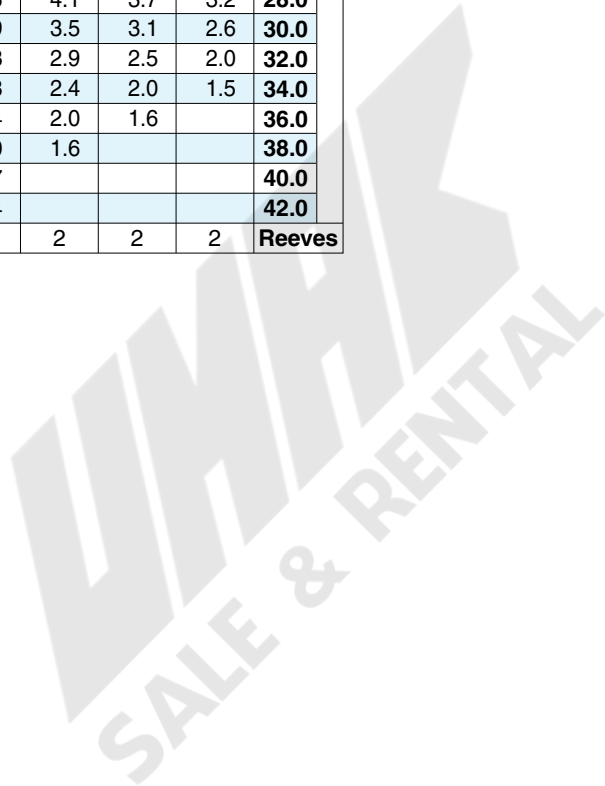


Unit: metric ton

**Counterweight: 28.8 t, Carbody weight: 7.3 t**

Boom length (m)		48.8				51.8				Boom length (m)
Jib length (m)		9.1	12.2	15.2	18.3	9.1	12.2	15.2	18.3	Jib length (m)
Working radius (m)	8.0	8.1m/21.8	8.1m/21.4	8.1m/21.0	8.1m/20.5	8.5m/16.9	8.5m/16.5	8.5m/16.1	8.5m/15.6	8.0
	9.0	20.7	20.3	19.9	19.4	16.5	16.1	15.7	15.2	9.0
	10.0	19.6	19.2	18.8	18.3	15.5	15.1	14.7	14.2	10.0
	12.0	16.6	16.2	15.8	15.3	13.8	13.4	13.0	12.5	12.0
	14.0	13.8	13.4	13.0	12.5	12.4	12.0	11.6	11.1	14.0
	16.0	11.7	11.3	10.9	10.4	11.3	10.9	10.5	10.0	16.0
	18.0	10.0	9.6	9.2	8.7	9.7	9.3	8.9	8.4	18.0
	20.0	8.7	8.3	7.9	7.4	8.4	8.0	7.6	7.1	20.0
	22.0	7.4	7.0	6.6	6.1	7.3	6.9	6.5	6.0	22.0
	24.0	6.3	5.9	5.5	5.0	6.2	5.8	5.4	4.9	24.0
	26.0	5.4	5.0	4.6	4.1	5.3	4.9	4.5	4.0	26.0
	28.0	4.7	4.3	3.9	3.4	4.5	4.1	3.7	3.2	28.0
	30.0	4.0	3.6	3.2	2.7	3.9	3.5	3.1	2.6	30.0
	32.0	3.5	3.1	2.7	2.2	3.3	2.9	2.5	2.0	32.0
	34.0	3.0	2.6	2.2	1.7	2.8	2.4	2.0	1.5	34.0
36.0	2.5	2.1	1.7	1.2	2.4	2.0	1.6		36.0	
38.0	2.2	1.8	1.4		2.0	1.6			38.0	
40.0	1.8	1.4			1.7				40.0	
42.0	1.5				1.4				42.0	
Reeves	2	2	2	2	2	2	2	2	Reeves	

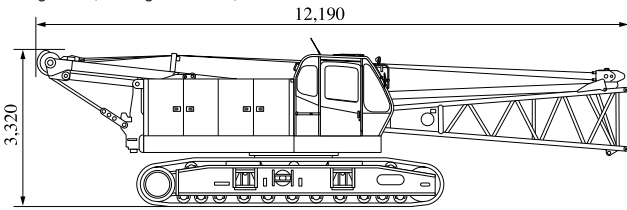
Note:  
 Ratings according to EN13000.  
 Refer to notes P12.



# PARTS AND ATTACHMENTS

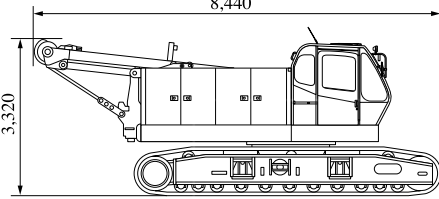
## Base Machine

Base machine with gantry, boom base, crawlers, wire ropes for main and aux. winches, lower spreader and upper spreader  
Weight: 44,700 kg Width: 3,500 mm



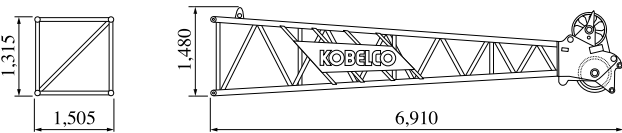
## Base Machine

Base machine with gantry, crawlers, wire ropes for main and aux. winches  
Weight: 42,460 kg Width: 3,500 mm



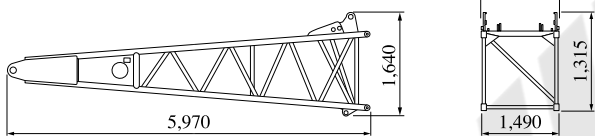
## Boom Top

Weight: 1,240 kg (with guy cables)



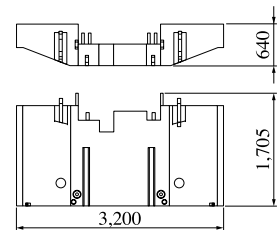
## Boom Base

Weight: 1,110 kg



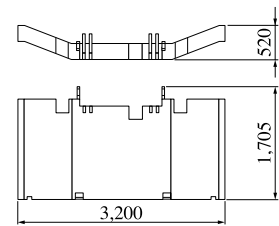
## Counterweight A

Weight: 12,070 kg



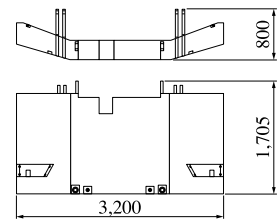
## Counterweight B

Weight: 7,370 kg



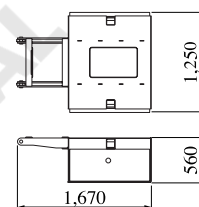
## Counterweight C

Weight: 9,350 kg



## Carbodyweight

Weight: 3,650 kg (1 pc)



Dimensions: mm Weight: kg

## Other Attachments

Attachments	Weight	Dimensions (L x W x H)
3.0 m insert boom	360 kg (with guy cables)	3,165 mm x 1,490 mm x 1,315 mm
6.1 m insert boom	590 kg (with guy cables)	6,210 mm x 1,490 mm x 1,315 mm
12.2 m insert boom	1,080 kg (with guy cables)	12,305 mm x 1,490 mm x 1,315 mm
12.2 m insert boom with lug	1,100 kg (with guy cables)	12,305 mm x 1,490 mm x 1,315 mm
Jib top	280 kg	4,910 mm x 800 mm x 800 mm
Jib base	200 kg	4,810 mm x 795 mm x 795 mm
3.0 m insert jib	120 kg (with guy cables)	3,115 mm x 795 mm x 795 mm
6.1 m insert jib	210 kg (with guy cables)	6,160 mm x 795 mm x 795 mm
Jib strut	250 kg	3,620 mm x 835 mm x 615 mm
Upper spreader	235 kg	1,460 mm x 250 mm x 630 mm
Crawler (1 piece)	7,500 kg	6,280 mm x 800 mm x 980 mm
Auxiliary sheave	195 kg	870 mm x 820 mm
11-ton swivel hook	100 kg	950 mm x 110 mm dia.
11-ton ball hook	290 kg	1,065 mm x 355 mm dia.
35-ton hook block	700 kg	1,575 mm x 700 mm x 400 mm
50-ton hook block	850 kg	1,700 mm x 435 mm x 700 mm
70-ton hook block	900 kg	1,820 mm x 700 mm x 385 mm
90-ton hook block	1,300 kg	1,870 mm x 700 mm x 515 mm

Note: Estimated weights may vary  $\pm$  2%.



Lined writing area with horizontal lines. A large, diagonal watermark is overlaid in the center, reading **WMAK** above **SALE & RENTAL**.



**HYDRAULIC CRAWLER CRANE**  
**CKE900**

**Standard Equipment**

**Upper structure/Lower structure**

Counterweight: 28.8 ton (total weight)  
 Carbody weight: 7.3 ton (total weight)  
 800 mm shoe crawlers  
 Batteries (170Ah/20HR)  
 Travel kit  
 Gantry raising/lowering cylinder  
 Electric hand throttle grip  
 Variable boom hoist speed controller  
 Variable main/aux. hoist speed controller  
 Side deck for cab  
 Steps (crawlers)  
 Two front working lights  
 Upper spreader storage guide  
 Tools (for routine maintenance)  
 Two rear view mirrors  
 Mirror for monitoring drums  
 Electric fuel pump  
 Counterweight self-removal  
 Cable roller (for boom)  
 Tool box (front of left-side guard)

**Cab/Control**

Boom hoist pedal (EU area only)  
 Air conditioner  
 Cup holder  
 Ashtray  
 Cigar lighter  
 Intermittent wiper & window washer (skylight and front window)  
 Sun visor  
 Roof blind  
 Floor mat (cloth)  
 Foot rest  
 Shoe tray  
 Level gauge (operator cabin)

**Safety Device**

Load Moment Indicator (with boom lowering slow stop function)  
 LMI release key (for hook over-hoist prevention device and boom over-hoist prevention device)  
 LCD multi display  
 Ultimate stop function for boom over-hoist  
 Function lock lever  
 Propel lever lock  
 Mechanical drum lock pawl (main, aux. and boom hoist)  
 Signal horn  
 Swing parking brake  
 Mechanical swing lock pin (four positions)  
 Swing flashers/warning buzzer  
 Cab window guard (left side)  
 Cab top guard  
 Fire extinguisher  
 External lamp for over-load alarm  
 Life hammer

**Note:** Standard equipment may vary depending on your areas or countries.  
 Due to our policy of continual product improvements all designs and specifications are subject to change without advance notice.  
 Copyright by KOBELCO CRANES CO., LTD. No part of this catalog may be reproduced in any manner without notice.



**KOBELCO CRANES CO., LTD.**

17-1, Higashigotanda 2-chome, Shinagawa-ku, Tokyo 141-8626 JAPAN  
 Tel: +81-3-5789-2130 Fax: +81-3-5789-3372

Inquiries To:

**KOBELCO** is the corporate mark used by Kobe Steel on a variety of products and in the names of a number of Kobe Steel Group companies.