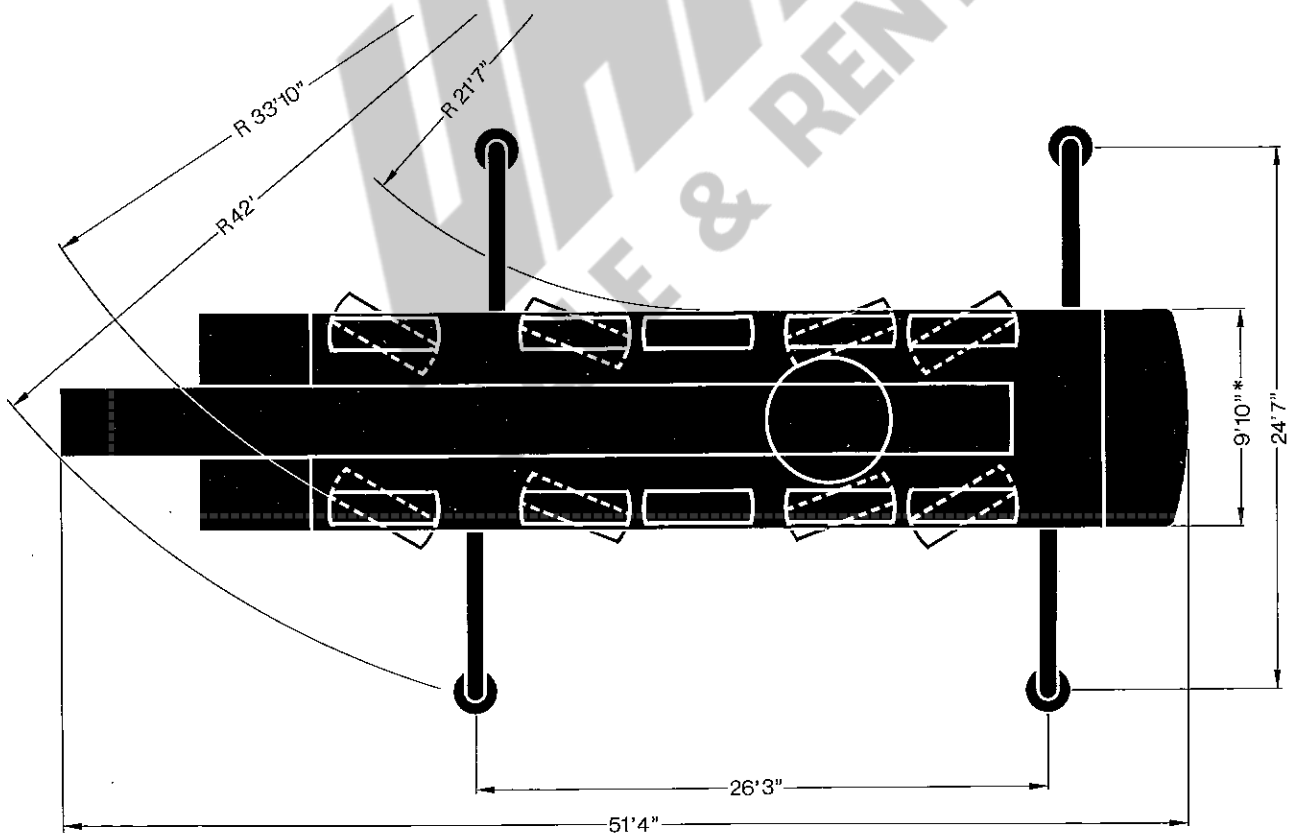
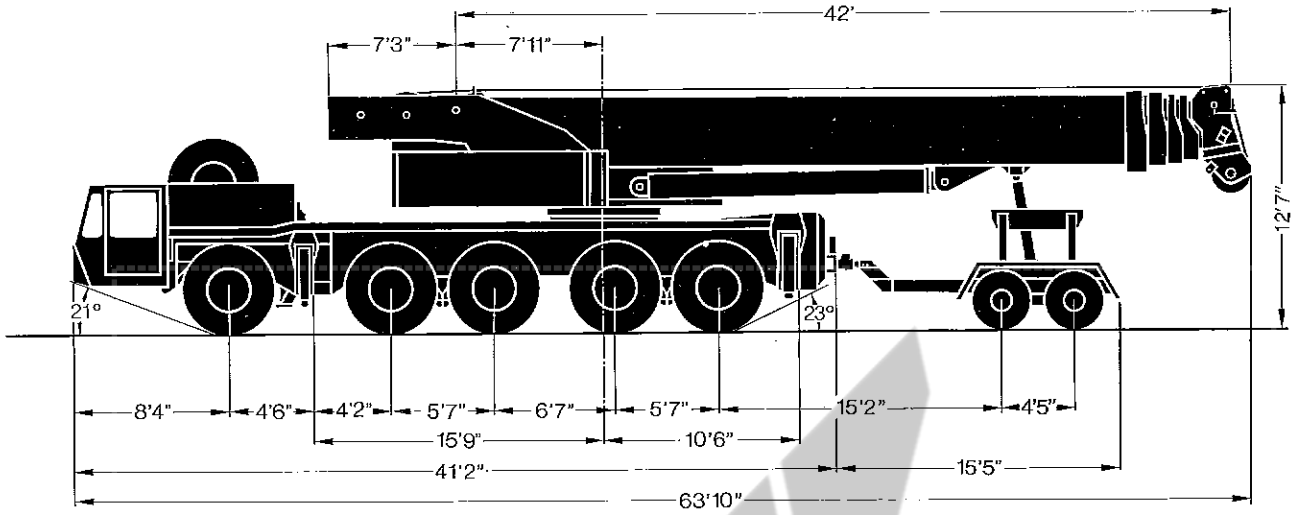


# **180 ton Telescopic Crane AC 335**



# Dimension Chart



\* Width with more than 60,000 lb counterweight 14'5" tail swing 16'11"

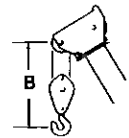
# Specifications

## Carrier Performance

Forward Speeds	0 – 44 mph	Reverse Speeds	3.8 mph
Ground clearance			14"
Tail swing – with 24,000 lb or 60,000 lb counterweight			16'4"
– with 88,000 lb counterweight			16'10"

## Working Speeds (infinitely variable)

Units	Line Speed	Rope Pull, Single Line	Length of Hoist Rope
Main Hoist	max. 394 ft/min	18,298 lb	984 ft
Secondary Hoist	max. 394 ft/min	18,298 lb	722 ft
Swing	max. 2 RPM		
Telescoping from 42 ft to 133 ft	80 s		
Boom Elevation from $-2^{\circ}$ to $83^{\circ}$	60 s		



## Hook-Block/Crane Hook

Capacity		Number of Sheaves	Number of Lines	Weight	"B"
max.	85%				
353,000 lb	331,000 lb	9	18	3,086 lb	8 ft
221,000 lb	201,000 lb	5	11	2,681 lb	8 ft
139,000 lb	128,000 lb	3	7	2,326 lb	8 ft
88,000 lb	55,000 lb	1	3	1,676 lb	8 ft
28,000 lb	18,000 lb	Crane Hook	1	816 lb	6 ft

# Lifting Capacities with Superlift in 1,000 lb with outriggers – 360°

88,000 lb Counterweight

85%

Radius	Main Boom						Main Boom 164 ft		Radius
							Tele-Extension-Boom 0°		
	42 ft	72 ft	103 ft	133 ft	149 ft	164 ft	33 ft	56 ft	
ft	lb	lb	lb	lb	lb	lb	lb	lb	ft
9	360.0** 1)	-	-	-	-	-	-	-	9
9	331.0**	-	-	-	-	-	-	-	9
11	299.8**	198.0	-	-	-	-	-	-	11
13	275.5	198.0	138.5	-	-	-	-	-	13
15	255.7	198.0	135.1	-	-	-	-	-	15
16	233.7	198.0	130.9	-	-	-	-	-	16
20	199.2	193.6	123.6	84.0	-	-	-	-	20
23	168.4	167.3	117.2	80.9	66.0	-	-	-	23
26	144.1	142.8	110.8	78.4	63.4	44.0	-	-	26
29	125.6	124.3	103.8	74.9	60.0	44.0	-	-	29
33	-	109.5	98.5	72.0	57.5	44.0	-	-	33
39	-	87.9	85.0	67.2	53.5	44.0	25.0	-	39
46	-	72.7	71.8	62.6	50.9	44.0	24.0	17.5	46
52	-	61.0	59.5	58.2	49.3	43.2	23.5	17.5	52
59	-	51.3	50.7	50.7	47.3	40.5	22.7	17.5	59
66	-	-	42.3	42.5	44.0	38.5	22.0	16.9	66
72	-	-	36.3	36.3	37.9	37.4	21.1	16.3	72
79	-	-	31.3	31.3	32.8	34.1	20.0	15.6	79
85	-	-	27.3	27.1	27.7	30.0	19.1	14.5	85
92	-	-	-	23.3	25.1	26.4	18.2	13.8	92
98	-	-	-	20.0	21.8	23.1	16.9	13.0	98
105	-	-	-	17.6	19.1	20.2	16.0	12.3	105
111	-	-	-	15.2	16.5	18.0	15.4	11.6	111
118	-	-	-	-	14.5	15.8	14.3	11.0	118
125	-	-	-	-	12.7	14.1	13.6	10.5	125
131	-	-	-	-	11.4	12.3	12.7	10.1	131
138	-	-	-	-	-	11.0	11.2	9.7	138
144	-	-	-	-	-	9.9	9.9	9.0	144
150	-	-	-	-	-	-	8.5	8.5	150
157	-	-	-	-	-	-	7.7	8.1	157
164	-	-	-	-	-	-	6.6	7.7	164
170	-	-	-	-	-	-	-	7.0	170
177	-	-	-	-	-	-	-	6.1	177
184	-	-	-	-	-	-	-	5.2	184

\* without Superlift-Suspension!

\*\* only with add. attachment!

1) over rear only

# Lifting Capacities on Fixed Fly Jib Boom (3°) and Superlift with outriggers – 360°

88,000 lb counterweight

85%

60,000 lb counterweight

85%

Boom	Radius	Fixed Fly Jib 3°		Boom	Radius	Fixed Fly Jib 3°			
		39 ft	59 ft			39 ft	59 ft	79 ft	98 ft
	ft	lb	lb		ft	lb	lb	lb	lb
	33	22.7	-		33	22.7	-	-	-
	39	21.8	16.5		39	21.8	16.5	-	-
	46	21.1	15.8		46	21.1	15.8	13.2	-
	52	20.5	15.4		52	20.5	15.4	12.3	9.4
	59	20.0	15.0		59	20.0	15.0	11.9	9.2
	66	19.4	14.5		66	19.4	14.5	11.2	8.8
	72	18.5	14.1		72	18.5	14.1	11.0	8.3
	79	17.8	13.6		79	17.8	13.6	10.3	8.1
<b>164 ft</b>	85	17.1	13.2	<b>164 ft</b>	85	17.1	13.2	9.9	7.7
	92	16.5	12.5		92	16.5	12.5	9.7	7.0
	98	15.8	12.1		98	15.8	12.1	9.2	6.6
	111	14.1	11.4		111	11.9	11.4	8.1	5.7
	125	12.3	10.3		125	8.3	9.4	7.0	5.0
	138	10.1	9.7		138	5.7	6.4	5.9	4.6
	150	8.6	8.3		150	3.7	4.4	4.4	4.1
	164	6.6	7.0		164	1.9	2.6	3.0	3.0
	170	5.2	6.1		170	-	1.9	2.4	2.8
	177	4.4	5.2		177	-	-	1.7	2.2

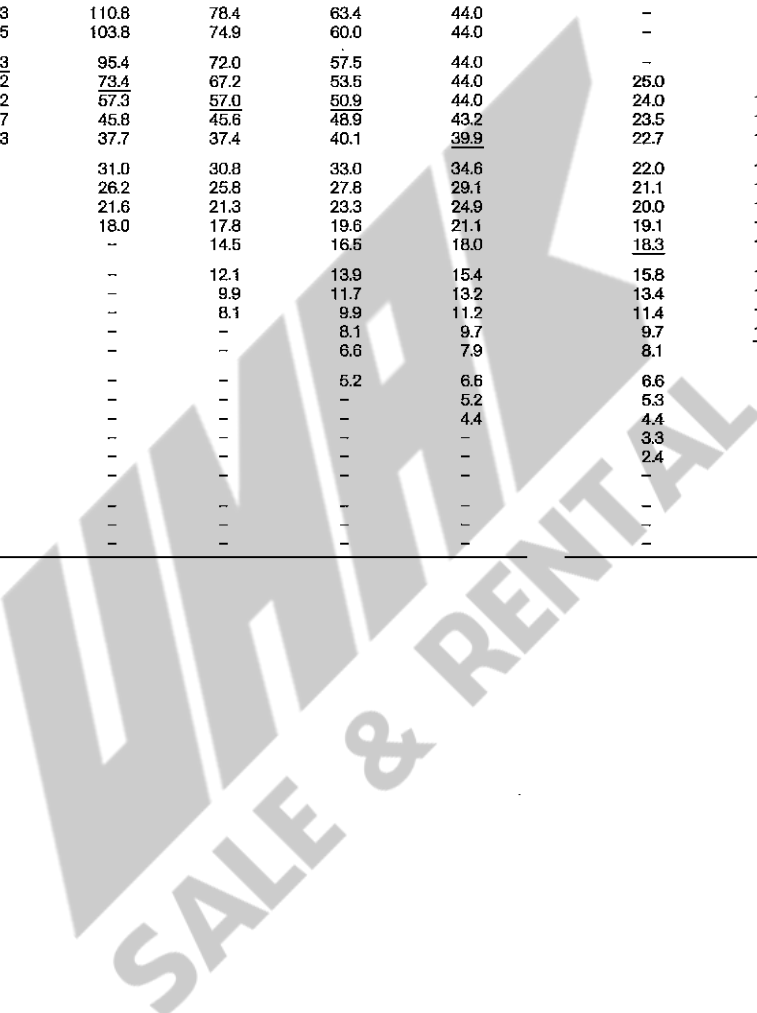
# Lifting Capacities with Superlift in 1,000 lb with outriggers – 360°

## 60,000 lb Counterweight

85%

Radius	Main Boom						Main Boom 164 ft		Radius
	* 42 ft	* 72 ft	103 ft	133 ft	149 ft	164 ft	Tele-Extension-Boom 0°		
	lb	lb	lb	lb	lb	lb	33 ft	56 ft	
ft	lb	lb	lb	lb	lb	lb	lb	ft	
9	331.0**	-	-	-	-	-	-	-	9
11	299.8**	198.0	-	-	-	-	-	-	11
13	275.5	198.0	136.5	-	-	-	-	-	13
15	242.5	198.0	135.1	-	-	-	-	-	15
16	219.8	198.0	130.9	-	-	-	-	-	16
20	178.7	177.9	123.6	84.0	-	-	-	-	20
23	149.2	148.1	117.2	80.9	66.0	-	-	-	23
26	127.4	126.3	110.8	78.4	63.4	44.0	-	-	26
29	110.9	109.5	103.8	74.9	60.0	44.0	-	-	29
33	-	96.3	95.4	72.0	57.5	44.0	-	-	33
39	-	74.2	73.4	67.2	53.5	44.0	25.0	-	39
46	-	58.2	57.3	57.0	50.9	44.0	24.0	17.5	46
52	-	46.7	45.8	45.6	48.9	43.2	23.5	17.5	52
59	-	38.3	37.7	37.4	40.1	39.9	22.7	17.5	59
66	-	-	31.0	30.8	33.0	34.6	22.0	17.5	66
72	-	-	26.2	25.8	27.8	29.1	21.1	16.3	72
79	-	-	21.6	21.3	23.3	24.9	20.0	15.6	79
85	-	-	18.0	17.8	19.6	21.1	19.1	14.5	85
92	-	-	-	14.5	16.5	18.0	18.3	13.8	92
98	-	-	-	12.1	13.9	15.4	15.8	13.0	98
105	-	-	-	9.9	11.7	13.2	13.4	12.3	105
111	-	-	-	8.1	9.9	11.2	11.4	11.6	111
118	-	-	-	-	8.1	9.7	9.7	11.0	118
125	-	-	-	-	6.6	7.9	8.1	9.9	125
131	-	-	-	-	5.2	6.6	6.6	8.3	131
138	-	-	-	-	-	5.2	5.3	7.0	138
144	-	-	-	-	-	4.4	4.4	6.1	144
150	-	-	-	-	-	-	3.3	5.0	150
157	-	-	-	-	-	-	2.4	4.2	157
164	-	-	-	-	-	-	-	3.3	164
170	-	-	-	-	-	-	-	2.6	170
177	-	-	-	-	-	-	-	-	177
184	-	-	-	-	-	-	-	-	184

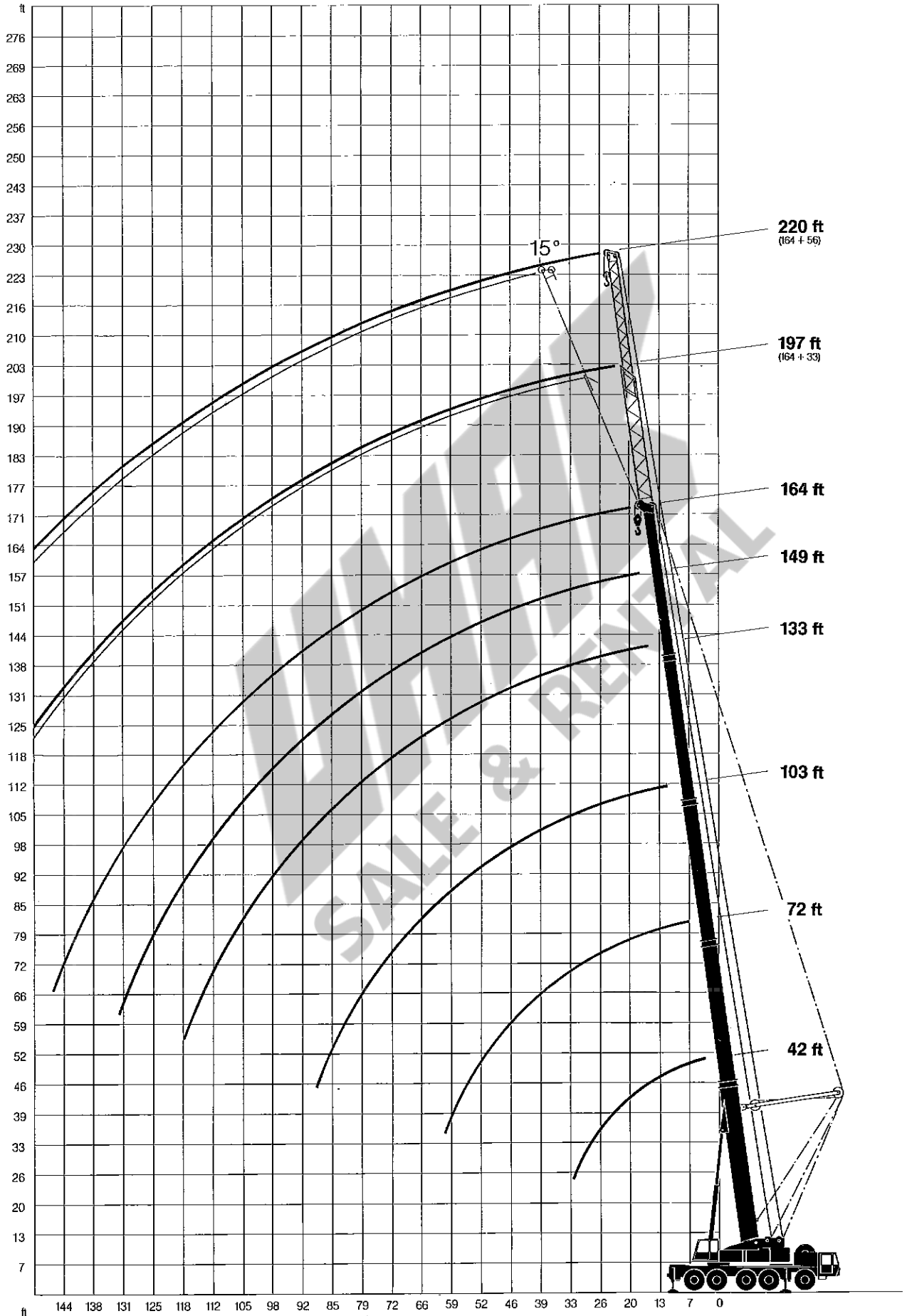
\* without Superlift-Suspension!  
\*\* only with add. attachment!



# Working Ranges

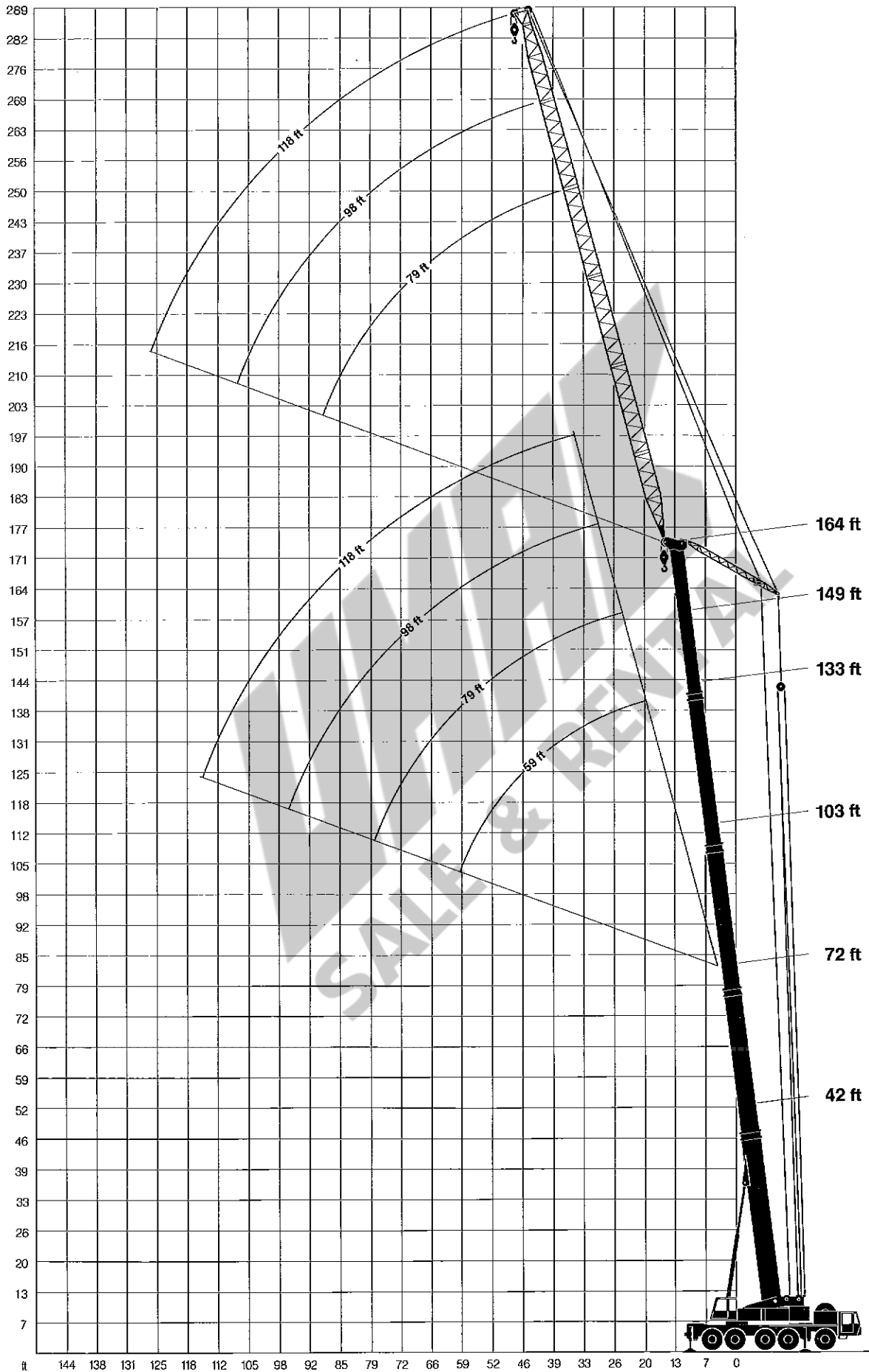
- Main boom
- Tele-Extension Jib

42 ft - 164 ft  
33 ft - 56 ft



# Working Ranges

— luffing jib: 59 ft, 79 ft, 98 ft, 118 ft



# Lifting Capacities in 1,000 lb

with outriggers – 360°

## on Luffing Fly Jib

24,000 lb counterweight 75%

Boom	Radius	Luffing Fly Jib			
		59 ft	79 ft	98 ft	118 ft
		ft	lb	lb	lb
72 ft	26	68.0	-	-	-
	29	67.2	-	-	-
	33	66.1	53.0	-	-
	39	62.9	48.5	37.0	-
	46	44.0	35.4	25.0	-
	52	30.0	39.2	33.0	23.8
	59	-	31.7	30.4	22.0
	66	-	25.3	28.4	20.5
	72	-	19.8	24.2	18.7
	79	-	14.1	20.0	16.9
	85	-	-	16.3	15.4
	92	-	-	12.7	13.8
98	-	-	-	12.5	
105	-	-	-	10.8	
111	-	-	-	8.1	
103 ft	29	50.0	-	-	-
	33	48.5	-	-	-
	39	45.1	33.0	-	-
	46	41.8	31.9	26.0	-
	52	37.2	30.8	24.9	19.0
	59	27.1	29.7	24.0	18.2
	66	-	28.6	22.9	17.1
	72	-	24.4	22.0	16.5
	79	-	18.5	20.9	16.0
	85	-	-	19.8	15.4
	92	-	-	16.3	15.0
	98	-	-	12.3	14.3
105	-	-	-	13.4	
111	-	-	-	10.3	
118	-	-	-	7.4	
125	-	-	-	-	
131	-	-	-	-	
133 ft	39	27.0	21.0	-	-
	46	25.1	19.6	16.0	-
	52	23.8	18.7	15.2	11.0
	59	22.9	18.0	14.7	11.0
	66	22.4	17.4	14.3	10.1
	72	-	16.7	13.6	9.4
	79	-	16.0	13.2	9.2
	85	-	15.4	12.7	9.0
	92	-	-	12.5	8.8
	98	-	-	12.1	8.8
	105	-	-	-	8.5
	111	-	-	-	8.3
118	-	-	-	7.9	
125	-	-	-	-	
131	-	-	-	-	
149 ft	39	22.0	16.0	-	-
	46	20.9	14.9	11.0	-
	52	19.8	14.3	9.9	5.0
	59	19.1	13.8	9.7	5.0
	66	18.2	13.4	9.2	4.8
	72	-	13.0	9.0	4.6
	79	-	12.5	9.0	4.4
	85	-	12.1	9.0	4.4
	92	-	-	8.8	4.4
	98	-	-	8.8	4.4
	105	-	-	8.8	4.4
	111	-	-	-	4.4
118	-	-	-	4.4	
125	-	-	-	4.4	
131	-	-	-	-	
164 ft	46	-	11.0	8.0	-
	52	-	10.8	7.2	-
	59	-	10.3	7.0	2.2
	66	-	10.1	6.8	1.8
	72	-	9.9	6.3	1.5
	79	-	9.7	6.1	1.3
	85	-	9.4	6.1	1.3
	92	-	-	5.9	1.3
	98	-	-	5.9	1.3
	105	-	-	5.7	1.3
	111	-	-	-	1.3

## on Fixed Fly Jib

60,000 lb counterweight 85%

Boom	Radius	Fixed Fly Jib							
		39 ft		59 ft		79 ft		98 ft	
		3°	20°	3°	20°	3°	20°	3°	20°
164 ft	33	24.0	-	-	-	-	-	-	-
	39	23.1	-	17.0	-	-	-	-	-
	46	21.8	-	16.3	-	13.8	-	-	-
	52	20.2	17.0	15.6	-	13.2	-	9.9	-
	59	18.9	16.0	14.9	13.0	12.1	-	9.7	-
	66	17.8	15.2	14.1	11.9	11.4	-	9.0	-
	72	16.9	14.1	13.4	11.4	10.5	9.0	8.5	-
	79	15.6	13.4	12.5	11.0	10.1	8.3	8.1	-
	85	14.3	12.5	11.9	10.3	9.7	8.1	7.7	6.0
	92	13.4	11.9	11.2	9.9	9.0	7.7	7.0	5.9
	98	12.1	11.2	10.3	9.7	8.3	7.2	6.6	5.7
	111	10.1	9.7	8.8	8.8	6.8	6.3	5.7	5.2
125	8.3	8.1	7.7	7.7	5.2	5.9	4.6	4.4	
138	5.7	6.3	6.3	6.6	4.4	5.5	3.3	3.9	
150	3.7	4.1	4.4	5.5	3.3	4.6	2.8	3.5	
164	1.9	2.4	2.6	3.5	2.4	3.7	1.9	2.8	
170	-	1.5	1.9	2.6	1.9	3.0	-	2.4	
177	-	-	-	1.7	-	2.4	-	-	

24,000 lb counterweight 85%

Boom	Radius	Fixed Fly Jib							
		39 ft		59 ft		79 ft		98 ft	
		3°	20°	3°	20°	3°	20°	3°	20°
164 ft	33	24.0	-	-	-	-	-	-	-
	39	23.1	-	17.0	-	-	-	-	-
	46	21.8	-	16.3	-	13.8	-	-	-
	52	20.2	17.0	15.6	-	13.2	-	9.9	-
	59	18.9	16.0	14.7	13.0	12.1	-	9.7	-
	66	17.8	15.2	14.1	11.9	11.4	-	9.0	-
	72	16.9	14.1	13.4	11.4	10.5	9.0	8.5	-
	79	14.1	13.4	12.5	11.0	10.1	8.3	8.1	-
	85	11.4	12.5	11.9	10.3	9.7	8.1	7.7	6.0
	92	9.0	11.0	9.7	9.9	9.0	7.7	7.0	5.9
	98	6.8	8.5	7.0	9.7	7.7	7.2	6.6	5.7
	111	3.3	4.6	3.9	5.9	4.4	6.3	4.4	5.2
125	-	1.9	1.5	3.3	1.9	4.1	2.2	4.4	
131	-	-	-	2.2	-	3.0	-	3.7	
137	-	-	-	-	-	1.9	-	2.6	
144	-	-	-	-	-	-	-	1.7	

### Lifting Capacity Notes

Lifting capacities do not exceed 85% of tipping load resp. 75% of tipping load on luffing fly jib. Max. wind speed: 50.85 ft/sec or 35 mph. Crane operation up to a wind force of 5% Beaufort scale (29.5 ft/sec or 20 mph) permissible. The weights of all load-handling devices are considered part of the load, and suitable allowance for them should be made.

All capacities above the parting line are based on structural strength. The capacities below the parting line are based on stability for the percentage of tipping load indicated.



# Lifting Capacities in 1,000 lb

with outriggers – 360°

## 88,000 lb Counterweight

85%

Radius ft	Main Boom						Main Boom 164 ft		Radius ft
	42 ft	72 ft	103 ft	133 ft	149 ft	164 ft	Tele-Extension-Boom 0°		
	lb	lb	lb	lb	lb	lb	33 ft lb	56 ft lb	
9	331.0**	-	-	-	-	-	-	-	9
11	299.8**	198.0*	-	-	-	-	-	-	11
13	275.5	198.0*	132.0	-	-	-	-	-	13
15	255.7	198.0*	132.0	-	-	-	-	-	15
16	233.7	198.0*	129.1	-	-	-	-	-	16
20	199.2	193.5*	119.0	79.0	-	-	-	-	20
23	188.4	167.3*	109.3	72.7	62.0	-	-	-	23
26	144.1	142.8*	99.8	67.6	58.8	49.0	-	-	26
29	125.6	124.3*	92.3	62.8	54.8	46.9	-	-	29
33	-	109.5	85.0	58.4	51.1	44.0	-	-	33
39	-	87.0	73.6	50.9	44.5	39.6	25.0	-	39
46	-	72.7	67.0	44.7	39.6	35.4	23.8	18.0	46
52	-	61.0	57.3	39.9	35.2	31.5	22.2	18.0	52
59	-	51.3	50.7	35.9	31.9	27.9	20.7	17.1	59
66	-	-	45.1	33.0	28.8	24.4	18.9	16.0	66
72	-	-	39.0	29.9	26.2	22.0	16.9	15.2	72
79	-	-	33.7	27.3	23.8	19.8	15.4	14.1	79
85	-	-	29.7	24.2	22.0	18.2	13.8	12.7	85
92	-	-	-	22.0	20.2	16.7	12.5	11.9	92
98	-	-	-	19.4	18.9	15.4	11.4	10.8	98
105	-	-	-	17.6	17.6	14.3	10.3	10.1	105
111	-	-	-	16.5	16.3	13.2	9.7	9.4	111
118	-	-	-	-	15.2	12.3	8.3	8.3	118
125	-	-	-	-	14.1	11.0	7.9	7.7	125
131	-	-	-	-	12.7	9.9	7.4	7.2	131
138	-	-	-	-	-	8.8	6.8	6.6	138
144	-	-	-	-	-	7.4	6.1	6.1	144
150	-	-	-	-	-	-	5.5	5.5	150
157	-	-	-	-	-	-	4.8	5.0	157
164	-	-	-	-	-	-	4.1	4.6	164
170	-	-	-	-	-	-	-	4.1	170
177	-	-	-	-	-	-	-	3.7	177
184	-	-	-	-	-	-	-	3.3	184

## 60,000 lb Counterweight

85%

Radius ft	Main Boom								Main Boom 164 ft		Radius ft
	42 ft	*** 42 ft	72 ft	*** 72 ft	103 ft	133 ft	149 ft	164 ft	Tele-Extension-Boom 0°		
	lb	lb	lb	lb	lb	lb	lb	lb	33 ft lb	56 ft lb	
9	331.0**	-	-	-	-	-	-	-	-	-	9
11	299.8**	-	198.0*	-	-	-	-	-	-	-	11
13	275.5	-	198.0*	-	132.0	-	-	-	-	-	13
15	242.5	44.0	198.0*	43.0	132.0	-	-	-	-	-	15
16	219.7	40.0	198.0*	39.0	129.1	-	-	-	-	-	16
20	178.7	33.0	177.9*	32.1	119.0	79.0	-	-	-	-	20
23	149.2	27.7	148.1*	26.9	109.3	72.7	62.0	-	-	-	23
26	127.4	23.5	126.3*	22.7	99.8	67.6	58.8	49.0	-	-	26
29	110.8	20.2	109.5	19.4	92.3	62.8	54.8	46.9	-	-	29
33	-	-	96.3	16.5	85.0	58.4	51.1	44.0	-	-	33
39	-	-	74.2	11.9	73.6	50.9	44.5	39.6	25.0	-	39
46	-	-	58.2	8.6	60.1	44.7	39.6	35.4	23.8	18.0	46
52	-	-	46.7	6.1	48.7	39.9	35.2	31.5	22.2	18.0	52
59	-	-	38.3	4.2	40.1	35.9	31.9	27.9	20.7	17.1	59
66	-	-	-	-	33.7	33.0	28.8	24.4	18.9	16.0	66
72	-	-	-	-	28.6	27.9	26.2	22.0	16.9	15.2	72
79	-	-	-	-	24.4	23.5	23.8	19.8	15.4	14.1	79
85	-	-	-	-	20.9	19.8	21.3	18.2	13.8	12.7	85
92	-	-	-	-	-	16.9	18.2	16.7	12.5	11.9	92
98	-	-	-	-	-	14.1	15.6	15.4	11.4	10.8	98
105	-	-	-	-	-	11.9	13.4	13.2	10.3	10.1	105
111	-	-	-	-	-	10.1	11.6	11.2	9.7	9.4	111
118	-	-	-	-	-	-	9.9	9.7	8.3	8.3	118
125	-	-	-	-	-	-	8.3	7.9	7.9	7.7	125
131	-	-	-	-	-	-	7.0	6.6	6.6	7.2	131
138	-	-	-	-	-	-	-	5.2	5.5	6.6	138
144	-	-	-	-	-	-	-	4.4	4.4	6.1	144
150	-	-	-	-	-	-	-	-	3.5	5.0	150
157	-	-	-	-	-	-	-	-	2.6	4.1	157
164	-	-	-	-	-	-	-	-	-	3.3	164
170	-	-	-	-	-	-	-	-	-	2.6	170
177	-	-	-	-	-	-	-	-	-	-	177
184	-	-	-	-	-	-	-	-	-	-	184

\* only pin-connected

\*\* with »heavy-lift« accessoires

\*\*\* over rear, on tyres

# Lifting Capacities in 1,000 lb

with outriggers – 360°

## 24,000 lb Counterweight

85%

Radius	Main Boom								Main Boom 164 ft		Radius
	42 ft	*** 42 ft	72 ft	*** 72 ft	103 ft	133 ft	149 ft	164 ft	33 ft	56 ft	
	lb	lb	lb	lb	lb	lb	lb	lb	lb	lb	
9	309.0**	-	-	-	-	-	-	-	-	-	9
11	282.1	-	198.0*	-	-	-	-	-	-	-	11
13	249.1	-	198.0*	-	132.0	-	-	-	-	-	13
15	220.0	35.2	198.0*	34.0	132.0	-	-	-	-	-	15
16	194.0	31.0	187.3*	30.4	129.1	-	-	-	-	-	16
20	156.3	25.1	143.2*	24.4	119.0	79.0	-	-	-	-	20
23	130.0	20.7	113.9	19.8	108.0	72.7	62.0	-	-	-	23
26	110.2	17.2	95.9	16.3	94.7	67.6	58.8	46.0	-	-	26
29	89.0	14.3	77.3	13.2	80.4	62.8	54.8	46.0	-	-	29
33	-	-	64.1	10.8	71.6	58.4	51.1	44.0	-	-	33
39	-	-	49.6	7.0	54.0	49.6	44.5	39.6	25.0	-	39
46	-	-	36.3	4.2	41.6	39.6	39.6	35.4	23.8	18.0	46
52	-	-	28.6	-	32.4	31.9	33.2	31.5	22.2	18.0	52
59	-	-	22.9	-	25.5	25.1	26.6	26.4	20.7	17.1	59
66	-	-	-	-	20.7	19.8	21.6	21.1	18.9	16.0	66
72	-	-	-	-	16.3	15.8	17.4	16.9	16.9	15.2	72
79	-	-	-	-	13.2	12.3	14.1	13.6	14.3	14.1	79
85	-	-	-	-	10.5	9.7	11.4	10.8	11.6	12.7	85
92	-	-	-	-	-	7.4	9.0	8.5	9.0	11.0	92
98	-	-	-	-	-	5.7	7.0	6.6	7.0	9.2	98
105	-	-	-	-	-	3.9	5.2	5.2	10.3	10.1	105
111	-	-	-	-	-	2.6	4.1	3.7	5.5	7.4	111
118	-	-	-	-	-	-	-	2.6	4.0	5.9	118
125	-	-	-	-	-	-	-	-	2.6	4.4	125
131	-	-	-	-	-	-	-	-	-	2.6	131
138	-	-	-	-	-	-	-	-	-	-	138
144	-	-	-	-	-	-	-	-	-	-	144
150	-	-	-	-	-	-	-	-	-	-	150
157	-	-	-	-	-	-	-	-	-	-	157
164	-	-	-	-	-	-	-	-	-	-	164
170	-	-	-	-	-	-	-	-	-	-	170
177	-	-	-	-	-	-	-	-	-	-	177
184	-	-	-	-	-	-	-	-	-	-	184

## w/o Counterweight

85%

Radius	Main Boom								Radius	
	42 ft	*** 42 ft	72 ft	*** 72 ft	103 ft	133 ft	149 ft	164 ft		
	lb	lb	lb	lb	lb	lb	lb	lb		
9	276.0	-	-	-	-	-	-	-	-	9
11	244.7	-	176.0*	-	-	-	-	-	-	11
13	209.4	-	176.0*	-	121.0	-	-	-	-	13
15	182.9	26.5	176.0*	25.5	117.5	-	-	-	-	15
16	160.9	23.1	158.7*	22.2	113.9	-	-	-	-	16
20	121.2	18.0	121.2	17.0	100.7	70.0	-	-	-	20
23	85.9	14.1	85.9	13.2	83.7	64.5	55.7	-	-	23
26	63.9	11.0	61.7	10.1	63.9	59.7	52.0	40.0	-	26
29	48.5	8.6	48.5	7.5	50.7	50.7	48.5	40.0	-	29
33	-	-	39.0	5.5	41.2	40.7	41.6	39.0	-	33
39	-	-	26.4	-	28.4	27.9	31.0	29.1	-	39
46	-	-	18.7	-	20.5	20.0	22.9	21.1	-	46
52	-	-	13.6	-	15.4	14.7	17.1	15.8	-	52
59	-	-	10.1	-	11.6	11.0	13.0	12.1	-	59
66	-	-	-	-	8.8	8.3	9.9	9.2	-	66
72	-	-	-	-	6.6	5.9	7.0	6.8	-	72
79	-	-	-	-	4.4	3.7	5.0	4.6	-	79
85	-	-	-	-	2.8	1.9	3.3	3.0	-	85

\* only pin-connected

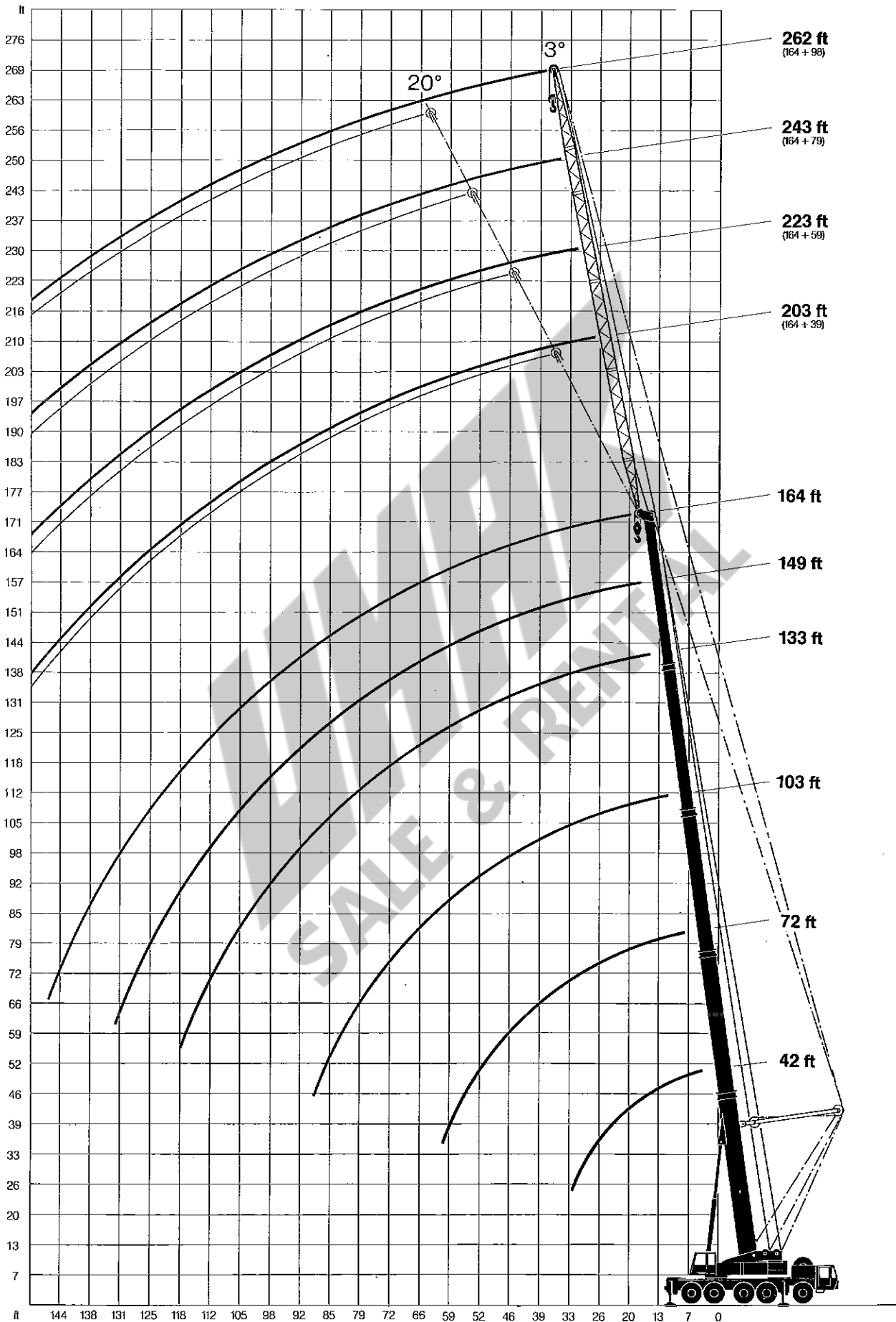
\*\* with »heavy-lift« accessoires

\*\*\* over rear, on tyres

# Working Ranges

— Main boom  
 — Fixed fly jib

42 ft – 164 ft  
 39 ft, 59 ft, 79 ft, 98 ft



## Carrier

### Truck-Type Carrier

Demag 10 x 8 x 8: 1st, 2nd, 4th and 5th axle – driven  
1st, 2nd, 4th and 5th axle – steered

### Frame

Monobox main frame with outrigger boxes integral, of high-grade close-grained steel.

### Outriggers

Four hydraulically telescoping outrigger beams with hydraulic jack legs.

### Engine

- Daimler-Benz OM 442 LA, water-cooled, 8-cylinder diesel engine.
- Output acc. SAE gross: 339 kW (461 hp), max. torque: 1765 Nm at 1100 rpm.
- Fuel-tank capacity: 120 gallons.

### Transmission

ZF-Transmatik synchromesh torque-converter main transmission plus transfer case and differential with lock-out control; electro-pneumatic gearshift; 16 speeds forward, including in low, 2 speeds reserve.

### Axles

Heavy special crane axles. All driven axles with planetary reduction hubs and differential lock-out.

### Suspension

Hydro-pneumatic suspension of all axles, 3 suspension systems independent of one another; all axles hydraulically lockable.

### Wheels

Single tyres 20.5 R 25 on rims 17.00 – 25/2.0.

### Steering

Dual-circuit semibloc mechanical steering with hydraulic booster.

### Brakes

Service-brake: air-operated dual circuit brake system, acting on all wheels. Parking brake: spring-loaded cylinders. Continuous braking: hydraulic retarder, integral with transmission.

### Electrical Equipment

24-volt system, DC.

### Cab

Rubber-mounted steel-plate 3-man cab with safety-glass windows and all controls.

## Superstructure

### Upper Frame

Torsion-resistant weldment of high-grade close-grained steel.

### Paneling

Sectional side panels, removable for service accessibility.

### Slewing Ring

Triple-row roller bearing slew circle with external ring gear.

### Engine

- Daimler-Benz OM 366 A, water-cooled, 6-cylinder diesel engine.
- Output acc. SAE gross: 127 kW (172 hp), max. torque: 560 Nm at 1400 rpm.
- Fuel-tank capacity: 75 gallons.

### Hydraulic System

Two variable-displacement axial-piston hydraulic pumps with automatic power control and one constant-displacement hydraulic pump for three hydraulic circuits and three simultaneous crane motions; one constant-displacement hydraulic pump for the low-pressure servo control.

### Hoist

Constant-displacement axial-piston hydraulic motor; hoist drum with integral planetary gearing and spring-loaded holding brake; anti-twist hoist cable.

### Slewing Gear

Axial-piston hydraulic motor with planetary gearing; foot-pedal operated slewing brake and spring-loaded holding brake.

### Boom Elevation

One differential cylinder with pilot-controlled lowering brake valve.

### Control

Four self-centering levers control the crane operations through hydraulic power and pilot valves.

### Cab

Spacious all-steel luxury cab with large folding-out front windscreen, roof window, sliding door, self-contained hot-air heating unit and ventilation system, all control and monitoring instruments for crane operation, spotlights.

### Main Boom

5-section hydraulically telescoping boom, fabricated from high-grade close-grained steel, featuring the familiar Demag »ovaloid« design of rectangular box members with rounded-off corners. Each section slides on diagonally arranged self-centering plastic shoes. Boom head with mounting lugs for extension and fly jibs.

### Counterweight

60,000 lb consisting of pieces of 10,000/14,000/2 x 18,000 lb.

### Safety Devices

Electronic overload cut-out (load-moment limiting device) with digital read-out for hook load, rated load, boom length, boom angle, load radius; analogous display to indicate the capacity utilization; limit switches on hoist and lowering motions; pressure-relief and safety holding valves.

### Crab-Steering Feature

Steering of 4th and 5th axles independent of 1st and 2nd axles. The non-steered 3rd axle can be raised via Spring Suspension system.

### Secondary Hoist

Constant-displacement axial-piston hydraulic motor; hoist drum with integral planetary gearing and spring-loaded holding brake, anti-twist hoist cable.

### Boom Pin-Lock System

Hydraulically operated pin-lock system for the telescoping boom sections.

### Additional Counterweight

28,000 lb counterweight, consisting of 2 x 14,000 lb, suspended from sides of standard counterweight; overall width when mounted: 14' 5".

### Superlift Attachment

The Superlift attachment is a simple means to increase the lifting capacity of the normal crane. It essentially consists of a boom suspension mast with guy ropes, which provides for an automatic rope-length adjustment for boom-telescoping, a boom pin-lock-system, and 28,000 lbs. Superlift counterweight. The suspension mast is lowered to the main boom when not needed, or for road transport. The Superlift counterweight is deposited hydraulically, without the use of an auxiliary crane.

### Boom Extension

Telescoping 36 ft – 56 ft side-folding 2-part lattice-type boom extension; with adapter to permit an angular adjustment to 15°.

### Fixed Fly Jib

Non-folding lattice-type fly jib in lengths of 39 ft, 59 ft, 79 ft, 98 ft (using components of the luffing fly jib). Angular adjustment to 3° and 20°.

### Luffing Fly Jib

Lattice-type, in lengths of 59 ft, 79 ft, 98 ft, 118 ft with luffing mast ropes, electrical equipment and safety devices.

Subject to change without notice. Machine Operation is subject to computer charts only.

## Mannesmann Demag Corporation

476 Country Club Drive

Bensenville, IL 60106

Telephone: (708) 766-4431

Telex: 214-909

Telefax: (708) 766-7549

10-175 11 2 160/10

**MANNESMANN  
DEMAG**

**All Terrain Crane**

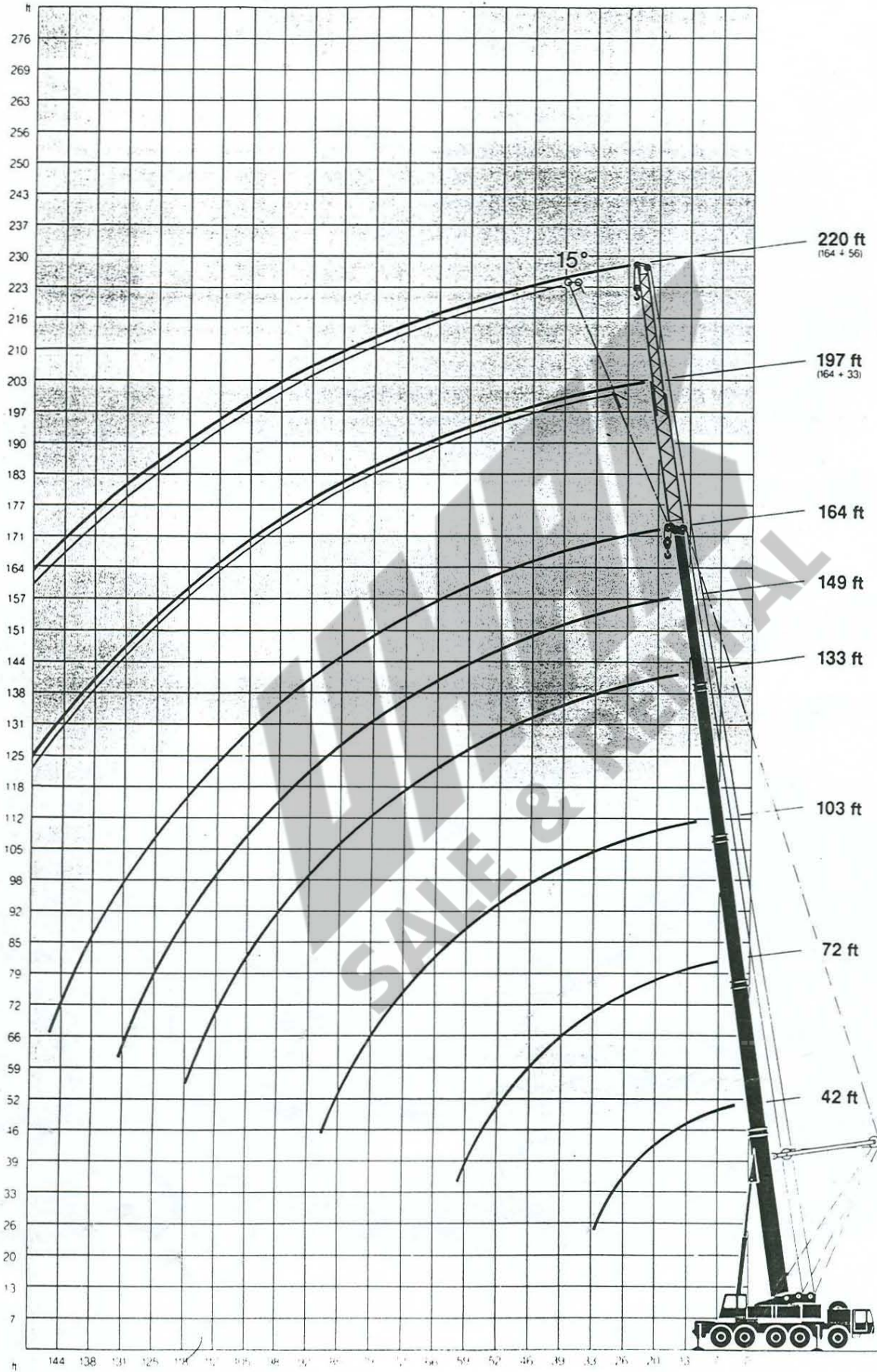
**AC 335**



# Working Ranges

- Main boom
- Tele-Extension Jib

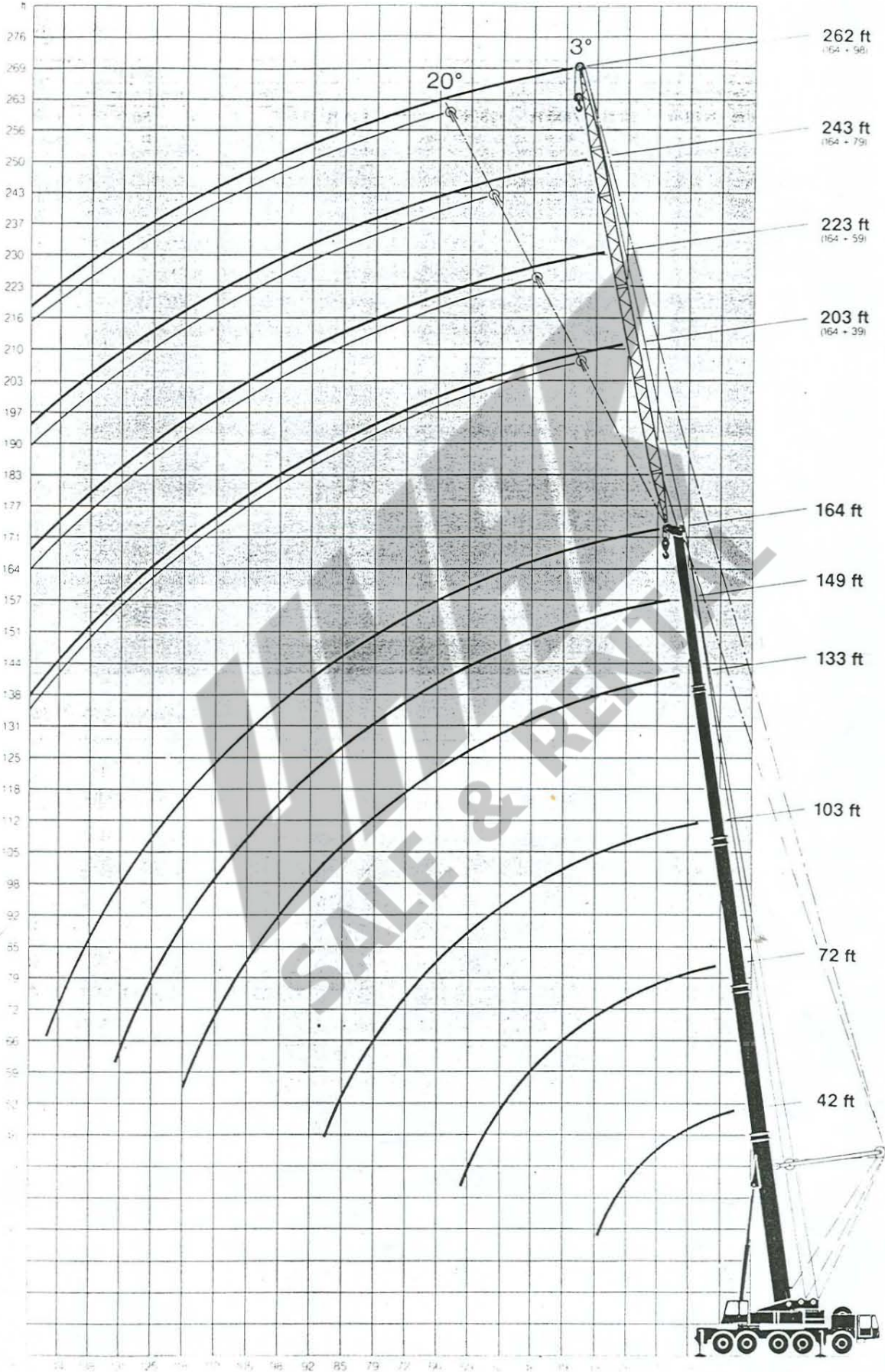
42 ft - 164 ft  
33 ft - 56 ft



# Working Ranges

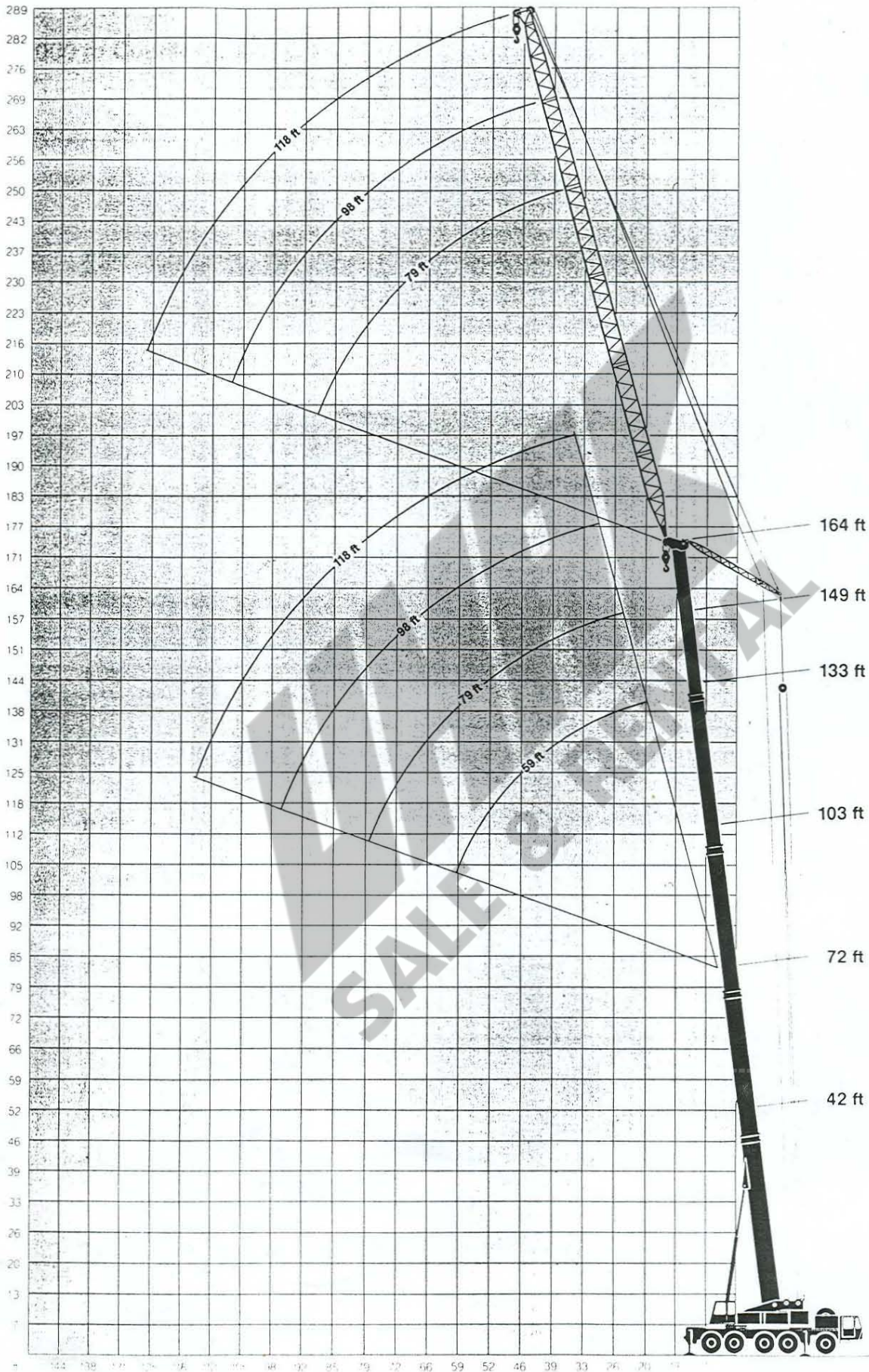
- Main boom
- Fixed fly jib

42 ft - 164 ft  
39 ft, 59 ft, 79 ft, 98 ft



# Working Ranges

— luffing jib: 59 ft, 79 ft, 98 ft, 118 ft





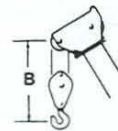
# Specifications

## Carrier Performance

Forward Speeds	0 – 44 mph	Reverse Speeds	3.8 mph
Ground clearance	14"		
Tail swing – with 24,000 lb or 60,000 lb counterweight	16'4"		
– with 88,000 lb counterweight	16'10"		

## Working Speeds (infinitely variable)

Units	Line Speed	Rope Pull, Single Line	Length of Hoist Rope
Main Hoist	max. 394 ft/min	18,298 lb	984 ft
Secondary Hoist	max. 394 ft/min	18,298 lb	722 ft
Swing	max. 2 RPM		
Telescoping from 42 ft to 133 ft	80 s		
Boom Elevation from –2° to 83°	60 s		



## Hook-Block/Crane Hook

Capacity		Number of Sheaves	Number of Lines	Weight	"B"
max.	85%				
353,000 lb	331,000 lb	9	18	3,086 lb	8 ft
221,000 lb	201,000 lb	5	11	2,681 lb	8 ft
139,000 lb	128,000 lb	3	7	2,326 lb	8 ft
88,000 lb	55,000 lb	1	3	1,676 lb	8 ft
28,000 lb	18,000 lb	Crane Hook	1	816 lb	6 ft

# Lifting Capacities in 1,000 lb

with outriggers – 360°

## 24,000 lb Counterweight

85%

Radius ft	Main Boom								Main Boom 164 ft Tele-Extension-Boom 0°		Radius ft
	42 ft	*** 42 ft	72 ft	*** 72 ft	103 ft	133 ft	149 ft	164 ft	33 ft	56 ft	
	lb	lb	lb	lb	lb	lb	lb	lb	lb	lb	
9	309.0**	-	-	-	-	-	-	-	-	-	9
11	282.1	-	198.0*	-	-	-	-	-	-	-	11
13	249.1	-	198.0*	-	132.0	-	-	-	-	-	13
15	220.0	35.2	198.0*	34.0	132.0	-	-	-	-	-	15
16	194.0	31.0	187.3*	30.4	129.1	-	-	-	-	-	16
20	156.3	25.1	143.2*	24.4	119.0	79.0	-	-	-	-	20
23	130.0	20.7	113.9	19.8	108.0	72.7	62.0	-	-	-	23
26	110.2	17.2	95.9	16.3	94.7	67.6	58.8	46.0	-	-	26
29	89.0	14.3	77.3	13.2	80.4	62.8	54.8	46.0	-	-	29
33	-	-	64.1	10.8	71.6	58.4	51.1	44.0	-	-	33
39	-	-	49.6	7.0	54.0	49.6	44.5	39.6	25.0	-	39
46	-	-	36.3	4.2	41.6	39.6	39.6	35.4	23.8	18.0	46
52	-	-	28.6	-	32.4	31.9	33.2	31.5	22.2	18.0	52
59	-	-	22.9	-	25.5	25.1	26.6	26.4	20.7	17.1	59
66	-	-	-	-	20.7	19.8	21.6	21.1	18.9	16.0	66
72	-	-	-	-	16.3	15.8	17.4	16.9	16.9	15.2	72
79	-	-	-	-	13.2	12.3	14.1	13.6	14.3	14.1	79
85	-	-	-	-	10.5	9.7	11.4	10.8	11.6	12.7	85
92	-	-	-	-	-	7.4	9.0	8.5	9.0	11.0	92
98	-	-	-	-	-	-	5.7	7.0	7.0	9.2	98
105	-	-	-	-	-	-	3.9	5.2	10.3	10.1	105
111	-	-	-	-	-	-	2.6	4.1	5.5	7.4	111
118	-	-	-	-	-	-	-	-	4.0	5.9	118
125	-	-	-	-	-	-	-	-	2.6	4.4	125
131	-	-	-	-	-	-	-	-	-	2.6	131
138	-	-	-	-	-	-	-	-	-	-	138
144	-	-	-	-	-	-	-	-	-	-	144
150	-	-	-	-	-	-	-	-	-	-	150
157	-	-	-	-	-	-	-	-	-	-	157
164	-	-	-	-	-	-	-	-	-	-	164
170	-	-	-	-	-	-	-	-	-	-	170
177	-	-	-	-	-	-	-	-	-	-	177
184	-	-	-	-	-	-	-	-	-	-	184

## w/o Counterweight

85%

Radius ft	Main Boom								Radius ft	
	42 ft	*** 42 ft	72 ft	*** 72 ft	103 ft	133 ft	149 ft	164 ft		
	lb	lb	lb	lb	lb	lb	lb	lb		
9	276.0	-	-	-	-	-	-	-	-	9
11	244.7	-	176.0*	-	-	-	-	-	-	11
13	209.4	-	176.0*	-	121.0	-	-	-	-	13
15	182.9	26.5	176.0*	25.5	117.5	-	-	-	-	15
16	160.9	23.1	158.7*	22.2	113.9	-	-	-	-	16
20	121.2	18.0	121.2	17.0	100.7	70.0	-	-	-	20
23	85.9	14.1	85.9	13.2	83.7	64.5	55.7	-	-	23
26	63.9	11.0	61.7	10.1	63.9	59.7	52.0	40.0	-	26
29	48.5	8.6	48.5	7.5	50.7	50.7	48.5	40.0	-	29
33	-	-	39.0	5.5	41.2	40.7	41.6	39.0	-	33
39	-	-	26.4	-	28.4	27.9	31.0	29.1	-	39
46	-	-	18.7	-	20.5	20.0	22.9	21.1	-	46
52	-	-	13.6	-	15.4	14.7	17.1	15.8	-	52
59	-	-	10.1	-	11.6	11.0	13.0	12.1	-	59
66	-	-	-	-	8.8	8.3	9.9	9.2	-	66
72	-	-	-	-	6.6	5.9	7.0	6.8	-	72
79	-	-	-	-	4.4	3.7	5.0	4.6	-	79
85	-	-	-	-	2.8	1.9	3.3	3.0	-	85

\* only pin-connected

\*\* with -heavy lift- accessories

\*\*\* over rear on tyres

# Lifting Capacities with Superlift in 1,000 lb with outriggers – 360°

60,000 lb Counterweight

85%

Radius ft	Main Boom						Main Boom 164 ft Tele-Extension-Boom 0°		Radius ft
	42 ft lb	72 ft lb	103 ft lb	133 ft lb	149 ft lb	164 ft lb	33 ft lb	56 ft lb	
9	331.0**	-	-	-	-	-	-	-	9
11	299.8**	198.0	-	-	-	-	-	-	11
13	275.5	198.0	136.5	-	-	-	-	-	13
15	242.5	198.0	135.1	-	-	-	-	-	15
16	219.8	198.0	130.9	-	-	-	-	-	16
20	178.7	177.9	123.6	84.0	-	-	-	-	20
23	149.2	148.1	117.2	80.9	66.0	-	-	-	23
26	127.4	126.3	110.8	78.4	63.4	44.0	-	-	26
29	110.9	109.5	103.8	74.9	60.0	44.0	-	-	29
33	-	96.3	95.4	72.0	57.5	44.0	-	-	33
39	-	74.2	73.4	67.2	53.5	44.0	25.0	-	39
46	-	58.2	57.3	57.0	50.9	44.0	24.0	17.5	46
52	-	46.7	45.8	45.6	48.9	43.2	23.5	17.5	52
59	-	38.3	37.7	37.4	40.1	39.9	22.7	17.5	59
66	-	-	31.0	30.8	33.0	34.6	22.0	17.5	66
72	-	-	26.2	25.8	27.8	29.1	21.1	16.3	72
79	-	-	21.6	21.3	23.3	24.9	20.0	15.6	79
85	-	-	18.0	17.8	19.6	21.1	19.1	14.5	85
92	-	-	-	14.5	16.5	18.0	18.3	13.8	92
98	-	-	-	12.1	13.9	15.4	15.8	13.0	98
105	-	-	-	9.9	11.7	13.2	13.4	12.3	105
111	-	-	-	8.1	9.9	11.2	11.4	11.6	111
118	-	-	-	-	8.1	9.7	9.7	11.0	118
125	-	-	-	-	6.6	7.9	8.1	9.9	125
131	-	-	-	-	5.2	6.6	6.6	8.3	131
138	-	-	-	-	-	5.2	5.3	7.0	138
144	-	-	-	-	-	4.4	4.4	6.1	144
150	-	-	-	-	-	-	3.3	5.0	150
157	-	-	-	-	-	-	2.4	4.2	157
164	-	-	-	-	-	-	-	3.3	164
170	-	-	-	-	-	-	-	2.6	170
177	-	-	-	-	-	-	-	-	177
184	-	-	-	-	-	-	-	-	184

\* without Superlift-Suspension!

\*\* only with add. attachment!

# Lifting Capacities with Superlift in 1,000 lb with outriggers – 360°

88,000 lb Counterweight

85%

Radius ft	Main Boom						Main Boom 164 ft Tele-Extension-Boom 0°		Radius ft
	42 ft lb	72 ft lb	103 ft lb	133 ft lb	149 ft lb	164 ft lb	33 ft lb	56 ft lb	
9	331.0**	-	-	-	-	-	-	-	9
11	299.8**	198.0	-	-	-	-	-	-	11
13	275.5	198.0	136.5	-	-	-	-	-	13
15	255.7	198.0	135.1	-	-	-	-	-	15
16	233.7	198.0	130.9	-	-	-	-	-	16
20	199.2	193.6	123.6	84.0	-	-	-	-	20
23	168.4	167.3	117.2	80.9	66.0	-	-	-	23
26	144.1	142.8	110.8	78.4	63.4	44.0	-	-	26
29	125.6	124.3	103.8	74.9	60.0	44.0	-	-	29
33	-	109.5	98.5	72.0	57.5	44.0	-	-	33
39	-	87.9	85.0	67.2	53.5	44.0	25.0	-	39
46	-	72.7	71.8	62.6	50.9	44.0	24.0	17.5	46
52	-	61.0	59.5	58.2	49.3	43.2	23.5	17.5	52
59	-	51.3	50.7	50.7	47.3	40.5	22.7	17.5	59
66	-	-	42.3	42.5	44.0	38.5	22.0	16.9	66
72	-	-	36.3	36.3	37.9	37.4	21.1	16.3	72
79	-	-	31.3	31.3	32.8	34.1	20.0	15.6	79
85	-	-	27.3	27.3	27.7	30.0	19.1	14.5	85
92	-	-	-	23.3	25.1	26.4	18.2	13.8	92
98	-	-	-	20.0	21.8	23.1	16.9	13.0	98
105	-	-	-	17.6	19.1	20.2	16.0	12.3	105
111	-	-	-	15.2	16.5	18.0	15.4	11.6	111
118	-	-	-	-	14.5	15.8	14.3	11.0	118
125	-	-	-	-	12.7	14.1	13.6	10.5	125
131	-	-	-	-	11.4	12.3	12.7	10.1	131
138	-	-	-	-	-	11.0	11.2	9.7	138
144	-	-	-	-	-	9.9	9.9	9.0	144
150	-	-	-	-	-	-	8.5	8.5	150
157	-	-	-	-	-	-	7.7	8.1	157
164	-	-	-	-	-	-	6.6	7.7	164
170	-	-	-	-	-	-	-	7.0	170
177	-	-	-	-	-	-	-	6.1	177
184	-	-	-	-	-	-	-	5.2	184

\* without Superlift-Suspension!

\*\* only with add. attachment!

# Lifting Capacities on Fixed Fly Jib Boom (3°) and Superlift with outriggers – 360°

88,000 lb counterweight

85%

60,000 lb counterweight

85%

Boom	Radius ft	Fixed Fly Jib 3°		Boom	Radius ft	Fixed Fly Jib 3°			
		39 ft lb	59 ft lb			39 ft lb	59 ft lb	79 ft lb	98 ft lb
164 ft	33	22.7	-	164 ft	33	22.7	-	-	-
	39	21.8	16.5		39	21.8	16.5	-	-
	46	21.1	15.8		46	21.1	15.8	13.2	-
	52	20.5	15.4		52	20.5	15.4	12.3	9.4
	59	20.0	15.0		59	20.0	15.0	11.9	9.2
	66	19.4	14.5		66	19.4	14.5	11.2	8.8
	72	18.5	14.1		72	18.5	14.1	11.0	8.3
	79	17.8	13.6		79	17.8	13.6	10.3	8.1
	85	17.1	13.2		85	17.1	13.2	9.9	7.7
	92	16.5	12.5		92	16.5	12.5	9.7	7.0
	98	15.8	12.1		98	15.8	12.1	9.2	6.6
	111	14.1	11.4		111	11.9	11.4	8.1	5.7
	125	12.3	10.3		125	8.3	9.4	7.0	5.0
	138	10.1	9.7		138	5.7	6.4	5.9	4.6
150	8.6	8.3	150	3.7	4.4	4.4	4.1		
164	6.6	7.0	164	1.9	2.6	3.0	3.0		
170	5.2	6.1	170	-	1.9	2.4	2.8		
177	4.4	5.2	177	-	-	1.7	2.2		

# Lifting Capacities in 1,000 lb

with outriggers – 360°

## on Luffing Fly Jib

24,000 lb counterweight

75%

Boom	Radius	Luffing Fly Jib				
		59 ft	79 ft	98 ft	118 ft	
	ft	lb	lb	lb	lb	
72 ft	26	68.0	-	-	-	
	29	67.2	-	-	-	
	33	66.1	53.0	-	-	
	39	52.9	48.5	37.0	-	
	46	40.1	44.0	35.4	25.0	
	52	30.0	39.2	33.0	23.8	
	59	-	31.7	30.4	22.0	
	66	-	25.3	28.4	20.5	
	72	-	-	19.8	24.2	18.7
	79	-	-	14.1	20.0	16.9
	85	-	-	-	16.3	15.4
	92	-	-	-	12.7	13.8
98	-	-	-	-	12.5	
105	-	-	-	-	10.8	
111	-	-	-	-	8.1	
29	50.0	-	-	-	-	
33	48.5	-	-	-	-	
39	45.1	33.0	-	-	-	
46	41.8	31.9	26.0	-	-	
52	37.2	30.8	24.9	19.0	-	
59	27.1	29.7	24.0	18.2	-	
66	-	28.6	22.9	17.1	-	
72	-	-	24.4	22.0	16.5	
79	-	-	18.5	20.9	16.0	
85	-	-	-	19.8	15.4	
92	-	-	-	16.3	15.0	
98	-	-	-	12.3	14.3	
105	-	-	-	-	13.4	
111	-	-	-	-	10.3	
118	-	-	-	-	7.4	
125	-	-	-	-	-	
131	-	-	-	-	-	
39	27.0	21.0	-	-	-	
46	25.1	19.6	16.0	-	-	
52	23.8	18.7	15.2	11.0	-	
59	22.9	18.0	14.7	11.0	-	
66	22.4	17.4	14.3	10.1	-	
72	-	16.7	13.8	9.4	-	
79	-	16.0	13.2	9.2	-	
85	-	15.4	12.7	9.0	-	
92	-	-	12.5	8.8	-	
98	-	-	12.1	8.8	-	
105	-	-	-	8.5	-	
111	-	-	-	8.3	-	
118	-	-	-	7.9	-	
125	-	-	-	-	-	
131	-	-	-	-	-	
39	22.0	16.0	-	-	-	
46	20.9	14.9	11.0	-	-	
52	19.8	14.3	9.9	5.0	-	
59	19.1	13.8	9.7	5.0	-	
66	18.2	13.4	9.2	4.8	-	
72	-	13.0	9.0	4.6	-	
79	-	12.5	9.0	4.4	-	
85	-	12.1	9.0	4.4	-	
92	-	-	8.8	4.4	-	
98	-	-	8.8	4.4	-	
105	-	-	8.8	4.4	-	
111	-	-	-	4.4	-	
118	-	-	-	4.4	-	
125	-	-	-	4.4	-	
131	-	-	-	-	-	
46	-	11.0	8.0	-	-	
52	-	10.8	7.2	-	-	
59	-	10.3	7.0	2.2	-	
66	-	10.1	6.8	1.8	-	
72	-	9.9	6.3	1.5	-	
79	-	9.7	6.1	1.3	-	
85	-	9.4	6.1	1.3	-	
92	-	-	5.9	1.3	-	
98	-	-	5.9	1.3	-	
105	-	-	5.7	1.3	-	

## on Fixed Fly Jib

60,000 lb counterweight

85%

Boom	Radius	Fixed Fly Jib							
		39 ft		59 ft		79 ft		98 ft	
	ft	3°	20°	3°	20°	3°	20°	3°	20°
		lb	lb	lb	lb	lb	lb	lb	lb
72 ft	33	24.0	-	-	-	-	-	-	-
	39	23.1	-	17.0	-	-	-	-	-
	46	21.8	-	16.3	-	13.8	-	-	-
	52	20.2	17.0	15.6	-	13.2	-	9.9	-
	59	18.9	16.0	14.9	13.0	12.1	-	9.7	-
	66	17.8	15.2	14.1	11.9	11.4	-	9.0	-
	72	16.9	14.1	13.4	11.4	10.5	9.0	8.5	-
	79	15.6	13.4	12.5	11.0	10.1	8.3	8.1	-
	85	14.3	12.5	11.9	10.3	9.7	8.1	7.7	6.0
	92	13.4	11.9	11.2	9.9	9.0	7.7	7.0	5.9
	98	12.1	11.2	10.3	9.7	8.3	7.2	6.6	5.7
	111	10.1	9.7	8.8	8.8	6.8	6.3	5.7	5.2
125	8.3	8.1	7.7	7.7	5.2	5.9	4.6	4.4	
138	5.7	6.3	6.3	6.6	4.4	5.5	3.3	3.9	
150	3.7	4.1	4.4	5.5	3.3	4.6	2.8	3.5	
164	1.9	2.4	2.6	3.5	2.4	3.7	1.9	2.8	
170	-	1.5	1.9	2.6	1.9	3.0	-	2.4	
177	-	-	-	1.7	-	2.4	-	-	

24,000 lb counterweight

85%

Boom	Radius	Fixed Fly Jib							
		39 ft		59 ft		79 ft		98 ft	
	ft	3°	20°	3°	20°	3°	20°	3°	20°
		lb	lb	lb	lb	lb	lb	lb	lb
72 ft	33	24.0	-	-	-	-	-	-	-
	39	23.1	-	17.0	-	-	-	-	-
	46	21.8	-	16.3	-	13.8	-	-	-
	52	20.2	17.0	15.6	-	13.2	-	9.9	-
	59	18.9	16.0	14.7	13.0	12.1	-	9.7	-
	66	17.8	15.2	14.1	11.9	11.4	-	9.0	-
	72	16.9	14.1	13.4	11.4	10.5	9.0	8.5	-
	79	14.1	13.4	12.5	11.0	10.1	8.3	8.1	-
	85	11.4	12.5	11.9	10.3	9.7	8.1	7.7	6.0
	92	9.0	11.0	9.7	9.9	9.0	7.7	7.0	5.9
	98	6.8	8.5	7.0	9.7	7.7	7.2	6.6	5.7
	111	3.3	4.6	3.9	5.9	4.4	6.3	4.4	5.2
125	-	1.9	1.5	3.3	1.9	4.1	2.2	4.4	
131	-	-	-	2.2	-	3.0	-	3.7	
137	-	-	-	-	-	1.9	-	2.6	
144	-	-	-	-	-	-	-	1.7	

### Lifting Capacity Notes

Lifting capacities do not exceed 85% of tipping load resp. 75% of tipping load on luffing fly jib.

Max. wind speed: 50.85 ft/sec or 35 mph.

Crane operation up to a wind force of 5% Beaufort scale (29.5 ft/sec or 20 mph) permissible.

The weights of all load-handling devices are considered part of the load, and suitable allowance for them should be made.

All capacities above the parting line are based on structural strength. The capacities below the parting line are based on stability for the percentage of tipping load indicated.

# Lifting Capacities in 1,000 lb

with outriggers – 360°

## 88,000 lb Counterweight

85%

Radius ft	Main Boom						Main Boom 164 ft		Radius ft
	42 ft	72 ft	103 ft	133 ft	149 ft	164 ft	Tele-Extension-Boom 0°		
	lb	lb	lb	lb	lb	lb	33 ft	56 ft	
9	331.0**	-	-	-	-	-	-	-	9
11	299.8**	-	-	-	-	-	-	-	11
13	275.5	198.0*	-	-	-	-	-	-	13
15	255.7	198.0*	132.0	-	-	-	-	-	15
16	233.7	198.0*	129.1	-	-	-	-	-	16
20	199.2	193.5*	119.0	79.0	-	-	-	-	20
23	168.4	167.3*	109.3	72.7	62.0	-	-	-	23
26	144.1	142.8*	99.8	67.6	58.8	49.0	-	-	26
29	125.6	124.3*	92.3	62.8	54.8	46.9	-	-	29
33	-	109.5	85.0	58.4	51.1	44.0	-	-	33
39	-	87.0	73.6	50.9	44.5	39.6	25.0	-	39
46	-	72.7	67.0	44.7	39.6	35.4	23.8	18.0	46
52	-	61.0	57.3	39.9	35.2	31.5	22.2	18.0	52
59	-	51.3	50.7	35.9	31.9	27.9	20.7	17.1	59
66	-	-	45.1	33.0	28.8	24.4	18.9	16.0	66
72	-	-	39.0	29.9	26.2	22.0	16.9	15.2	72
79	-	-	33.7	27.3	23.8	19.8	15.4	14.1	79
85	-	-	29.7	24.2	22.0	18.2	13.8	12.7	85
92	-	-	-	22.0	20.2	16.7	12.5	11.9	92
98	-	-	-	19.4	18.9	15.4	11.4	10.8	98
105	-	-	-	17.6	17.6	14.3	10.3	10.1	105
111	-	-	-	16.5	16.3	13.2	9.7	9.4	111
118	-	-	-	-	15.2	12.3	8.3	8.3	118
125	-	-	-	-	14.1	11.0	7.9	7.7	125
131	-	-	-	-	12.7	9.9	7.4	7.2	131
138	-	-	-	-	-	8.8	6.8	6.6	138
144	-	-	-	-	-	7.4	6.1	6.1	144
150	-	-	-	-	-	-	5.5	5.5	150
157	-	-	-	-	-	-	4.8	5.0	157
164	-	-	-	-	-	-	4.1	4.6	164
170	-	-	-	-	-	-	-	4.1	170
177	-	-	-	-	-	-	-	3.7	177
184	-	-	-	-	-	-	-	3.3	184

## 60,000 lb Counterweight

85%

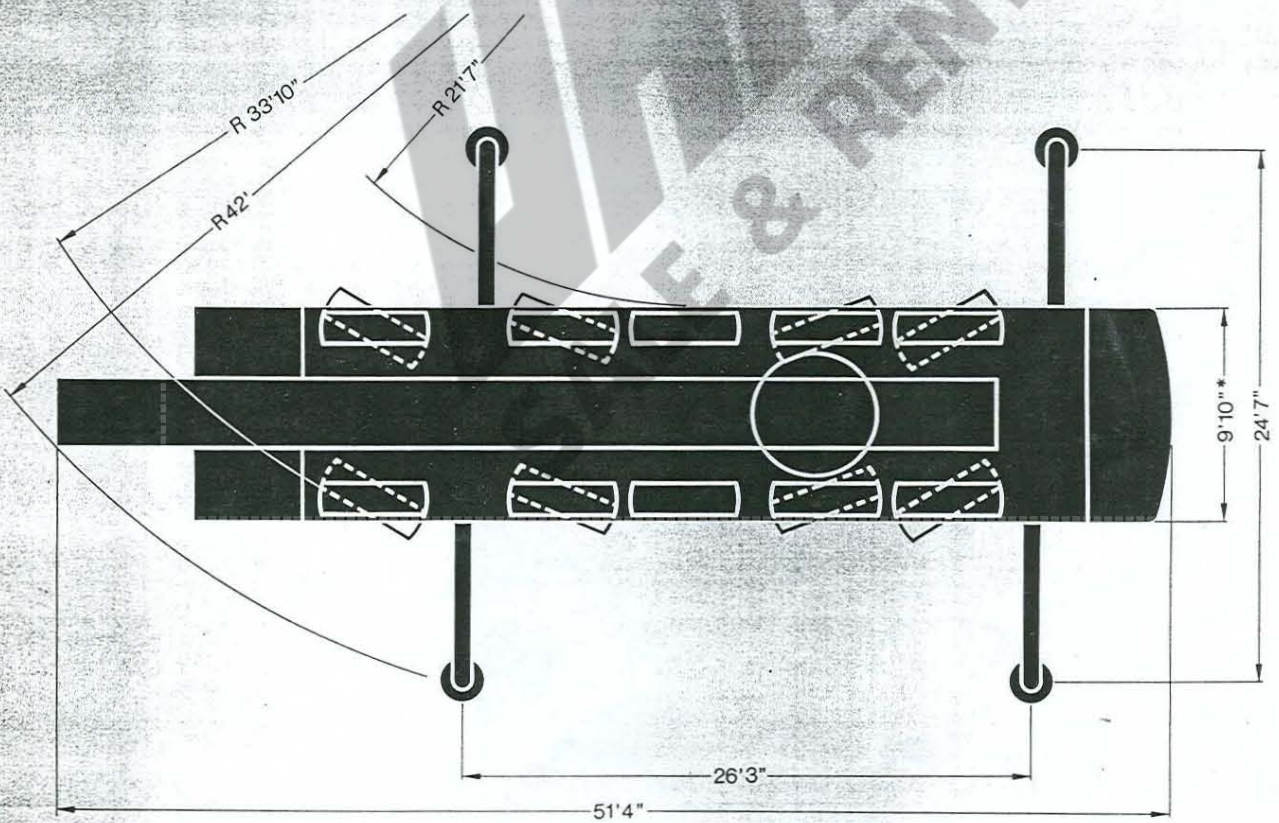
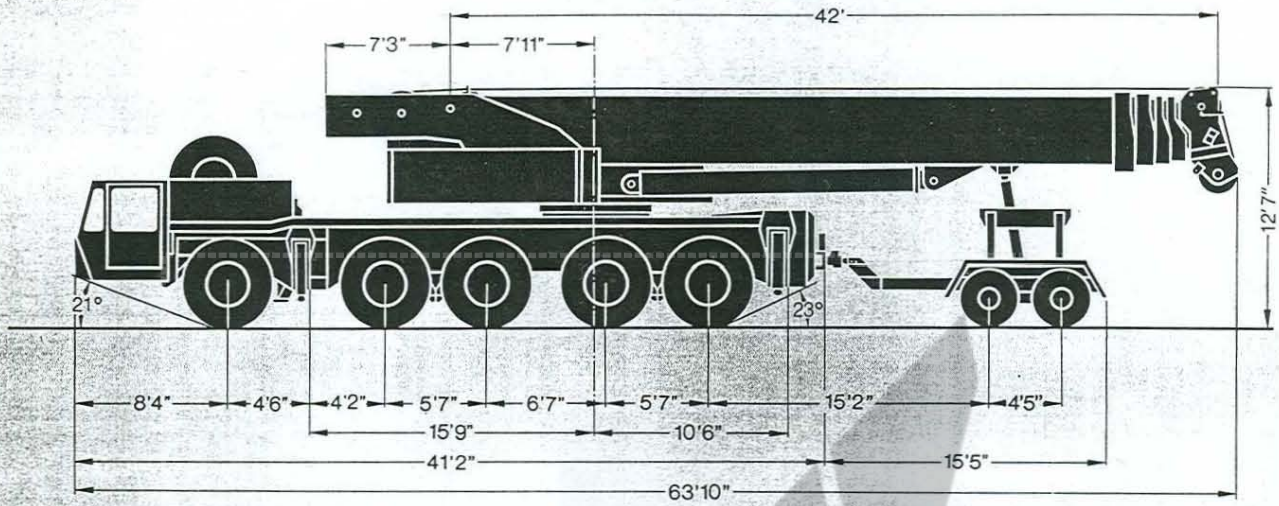
Radius ft	Main Boom								Main Boom 164 ft		Radius ft
	42 ft	*** 42 ft	72 ft	*** 72 ft	103 ft	133 ft	149 ft	164 ft	Tele-Extension-Boom 0°		
	lb	lb	lb	lb	lb	lb	lb	lb	33 ft	56 ft	
9	331.0**	-	-	-	-	-	-	-	-	-	9
11	299.8**	-	198.0*	-	-	-	-	-	-	-	11
13	275.5	-	198.0*	-	-	-	-	-	-	-	13
15	242.5	44.0	198.0*	43.0	132.0	-	-	-	-	-	15
16	219.7	40.0	198.0*	39.0	129.1	-	-	-	-	-	16
20	178.7	33.0	177.9*	32.1	119.0	79.0	-	-	-	-	20
23	149.2	27.7	148.1*	26.9	109.3	72.7	62.0	-	-	-	23
26	127.4	23.5	126.3*	22.7	99.8	67.6	58.8	49.0	-	-	26
29	110.8	20.2	109.5	19.4	92.3	62.8	54.8	46.9	-	-	29
33	-	-	96.3	18.5	85.0	58.4	51.1	44.0	-	-	33
39	-	-	74.2	11.9	73.6	50.9	44.5	39.6	25.0	-	39
46	-	-	58.2	8.6	60.1	44.7	39.6	35.4	23.8	18.0	46
52	-	-	46.7	6.1	48.7	39.9	35.2	31.5	22.2	18.0	52
59	-	-	38.3	4.2	40.1	35.9	31.9	27.9	20.7	17.1	59
66	-	-	-	-	33.7	33.0	28.8	24.4	18.9	16.0	66
72	-	-	-	-	28.6	27.9	26.2	22.0	16.9	15.2	72
79	-	-	-	-	24.4	23.5	23.8	19.8	15.4	14.1	79
85	-	-	-	-	20.9	19.8	21.3	18.2	13.8	12.7	85
92	-	-	-	-	-	16.9	18.2	16.7	12.5	11.9	92
98	-	-	-	-	-	14.1	15.6	15.4	11.4	10.8	98
105	-	-	-	-	-	11.9	13.4	13.2	10.3	10.1	105
111	-	-	-	-	-	10.1	11.6	11.2	9.7	9.4	111
118	-	-	-	-	-	-	9.9	9.7	8.3	8.3	118
125	-	-	-	-	-	-	8.3	7.9	7.9	7.7	125
131	-	-	-	-	-	-	7.0	6.6	6.6	7.2	131
138	-	-	-	-	-	-	-	5.2	5.5	6.6	138
144	-	-	-	-	-	-	-	4.4	4.4	6.1	144
150	-	-	-	-	-	-	-	-	3.5	5.0	150
157	-	-	-	-	-	-	-	-	2.6	4.1	157
164	-	-	-	-	-	-	-	-	-	3.3	164
170	-	-	-	-	-	-	-	-	-	2.6	170
177	-	-	-	-	-	-	-	-	-	-	177
184	-	-	-	-	-	-	-	-	-	-	184

\* 85% lift capacity

\*\* with heavy lift accessories

\*\*\* over load on boom

# Dimension Chart



\* Width with more than 60,000 lb counterweight 14'5" tail swing 16'11"

2

**MANNESMANN  
DEMAG**

**Geländekran  
All-Terrain Crane  
Grue Tout-Terrain**

**AC 335**





# Tragfähigkeiten am Superlift

## Lifting Capacities on Superlift

### Forces de levage sur Superlift

40 t

Gegengewicht  
counterweight  
de lest

85%

Ausladung Radius Portée	Hauptausleger · Main Boom · Flèche						50m Hauptausleger · Main Boom · Flèche			Ausladung Radius Portée
	12,8 m	22,0 m	31,3 m	40,6 m	45,4 m	50,0 m	Hauptauslegerverlängerung (0°) Extension Boom · Rallonge de flèche			
	360°	360°	360°	360°	360°	360°	60m (10m)	Tele	67m (17m)	
m	t	t	t	t	t	t	t	t	t	m
3	150,0**	-	-	-	-	-	-	-	-	3
3,5	136,0**	90,0	-	-	-	-	-	-	-	3,5
4	125,0	90,0	62,0	-	-	-	-	-	-	4
4,5	116,0	90,0	61,3	-	-	-	-	-	-	4,5
5	106,0	90,0	59,4	-	-	-	-	-	-	5
6	90,4	87,8	56,1	38,0	-	-	-	-	-	6
7	76,4	75,9	53,2	36,7	30,0	-	-	-	-	7
8	65,4	64,8	50,3	35,6	28,8	22,0	-	-	-	8
9	57,0	56,4	47,1	34,0	27,2	22,0	-	-	-	9
10	-	49,7	44,7	32,7	26,1	22,0	-	-	-	10
12	-	39,9	38,6	30,5	24,3	21,5	11,3	-	-	12
14	-	33,0	32,6	28,4	23,1	20,6	10,9	8,0	-	14
16	-	27,7	27,0	26,4	22,4	19,6	10,7	8,0	-	16
18	-	23,3	23,0	23,0	21,5	18,4	10,3	8,0	-	18
20	-	-	19,2	19,3	20,0	17,5	10,0	7,7	-	20
22	-	-	16,5	16,5	17,2	17,0	9,6	7,4	-	22
24	-	-	14,2	14,2	14,9	15,5	9,1	7,1	-	24
26	-	-	12,4	12,3	12,6	13,6	8,7	6,6	-	26
28	-	-	-	10,6	11,4	12,0	8,3	6,3	-	28
30	-	-	-	9,1	9,9	10,5	7,7	5,9	-	30
32	-	-	-	8,0	8,7	9,2	7,3	5,6	-	32
34	-	-	-	6,9	7,5	8,2	7,0	5,3	-	34
36	-	-	-	-	6,6	7,2	6,5	5,0	-	36
38	-	-	-	-	5,8	6,4	6,2	4,8	-	38
40	-	-	-	-	5,2	5,6	5,8	4,6	-	40
42	-	-	-	-	-	5,0	5,1	4,4	-	42
44	-	-	-	-	-	4,5	4,5	4,1	-	44
46	-	-	-	-	-	-	3,9	3,9	-	46
48	-	-	-	-	-	-	3,5	3,7	-	48
50	-	-	-	-	-	-	3,0	3,5	-	50
52	-	-	-	-	-	-	-	3,2	-	52
54	-	-	-	-	-	-	-	2,8	-	54
56	-	-	-	-	-	-	-	2,4	-	56

40 t

Gegengewicht  
counterweight  
de lest

\*\* mit Zusatzeinrichtung  
\*\* with "heavy-lift" accessoires  
\*\* moyennant accessoires «manutentions extra lourdes»

75%

Ausladung Radius Portée	Hauptausleger · Main Boom · Flèche						50m Hauptausleger · Main Boom · Flèche			Ausladung Radius Portée
	12,8 m	22,0 m	31,3 m	40,6 m	45,4 m	50,0 m	Hauptauslegerverlängerung (0°) Extension Boom · Rallonge de flèche			
	360°	360°	360°	360°	360°	360°	60m (10m)	Tele	67m (17m)	
m	t	t	t	t	t	t	t	t	t	m
3	130,0**	-	-	-	-	-	-	-	-	3
3,5	120,0**	80,0	-	-	-	-	-	-	-	3,5
4	110,0	80,0	55,0	-	-	-	-	-	-	4
4,5	102,0	80,0	54,1	-	-	-	-	-	-	4,5
5	94,0	80,0	52,5	-	-	-	-	-	-	5
6	79,8	77,5	49,6	33,6	-	-	-	-	-	6
7	67,4	67,0	47,0	32,4	26,5	-	-	-	-	7
8	57,7	57,2	44,4	31,4	25,4	20,0	-	-	-	8
9	50,3	49,8	41,6	30,0	24,0	20,0	-	-	-	9
10	-	43,9	39,5	28,9	23,0	20,0	-	-	-	10
12	-	35,2	34,1	26,9	21,5	19,0	10,0	-	-	12
14	-	29,1	28,8	25,1	20,4	18,2	9,7	7,5	-	14
16	-	24,5	23,9	23,3	19,8	17,3	9,5	7,5	-	16
18	-	20,6	20,3	20,3	19,0	16,3	9,2	7,2	-	18
20	-	-	17,1	17,1	17,7	15,5	8,9	6,9	-	20
22	-	-	14,6	14,6	15,2	15,0	8,5	6,6	-	22
24	-	-	12,6	12,6	13,2	13,7	8,1	6,3	-	24
26	-	-	11,0	10,9	11,2	12,0	7,7	5,9	-	26
28	-	-	-	9,4	10,1	10,6	7,3	5,6	-	28
30	-	-	-	8,1	8,8	9,3	6,9	5,3	-	30
32	-	-	-	7,1	7,7	8,2	6,5	5,0	-	32
34	-	-	-	6,1	6,7	7,3	6,2	4,7	-	34
36	-	-	-	-	5,9	6,4	5,8	4,5	-	36
38	-	-	-	-	5,2	5,7	5,5	4,3	-	38
40	-	-	-	-	4,6	5,0	5,2	4,1	-	40
42	-	-	-	-	-	4,5	4,6	3,9	-	42
44	-	-	-	-	-	4,0	4,0	3,7	-	44
46	-	-	-	-	-	-	3,5	3,5	-	46
48	-	-	-	-	-	-	3,1	3,3	-	48
50	-	-	-	-	-	-	2,7	3,1	-	50
52	-	-	-	-	-	-	-	2,9	-	52
54	-	-	-	-	-	-	-	2,5	-	54
56	-	-	-	-	-	-	-	2,2	-	56

# Technische Daten

## Specifications

## Caractéristiques

### Achslasten Axle Loads Poids d'essieux

Kran mit Hauptausleger, Unterflasche und 2. Hubwerk Crane with Boom, 2nd Hoist Drum and Hook Block Grue avec flèche, 2e treuil de levage et crochet mouflé	
Achsen Axles Essieux	5 x 12000 kg
Gesamt Total Axle Load Poids d'essieux total	60000 kg

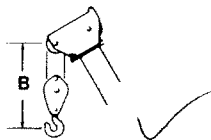
### Arbeitsgeschwindigkeiten (stufenlos regelbar) Working Speeds (infinitely variable) Vitesses de travail (infiniment réglables)

Antriebe Units Mécanismes	Normalgang Normal Vitesse normale	Schnellgang High Speed Marche rapide	zulässiger Seilzug je Strang Rope Pull, Single Line Effort sur brin simple	Länge des Hubseils Length of Hoist Rope Longueur du câble de levage
Hubwerk I Main Hoist Levage sur flèche	60 m/min	120 m/min	85% 82 kN (8,3 Mp) 75% 72 kN (7,33 Mp)	300 m
Hubwerk II Secondary Hoist 2e treuil de levage	60 m/min	120 m/min	85% 82 kN (8,3 Mp) 75% 72 kN (7,33 Mp)	180 m
Drehwerk Slewing Orientation				max. 2 U/min max. 2 RPM max. 2 tr/mn
Ausleger-Teleskopieren von 12,8 – 40,6 m Telescoping Speed 12.8 – 40.6 m Vitesse de télescopage de 12,8 à 40,6 m				80 s
Ausleger-Winkelverstellung von 2° bis 83° Boom Elevation from 2° to 83° Elévation de flèche de 2° à 83°				60 s

### Fahrleistungen Carrier Performance Performances du porteur

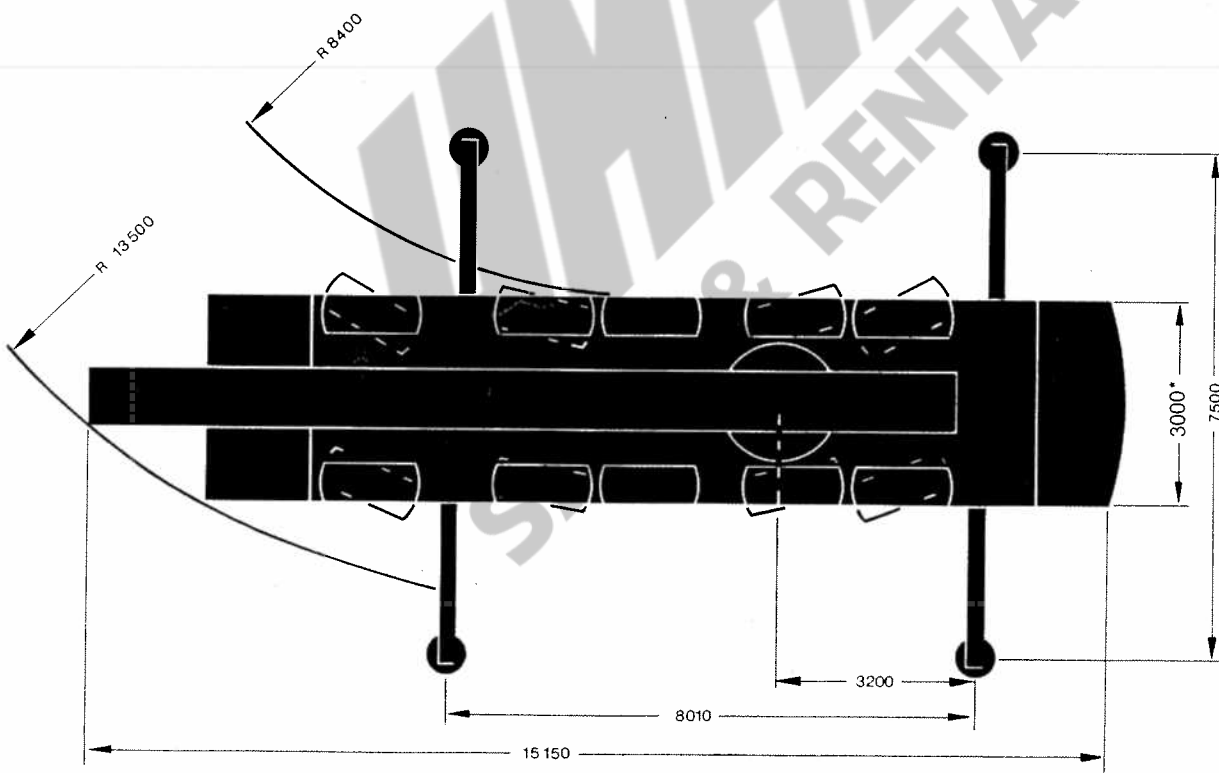
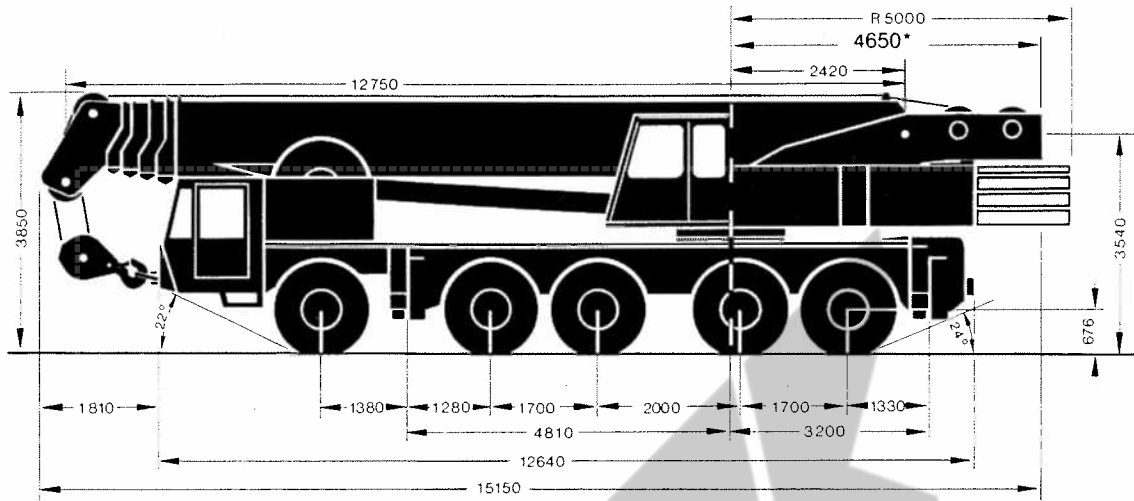
Fahrgeschwindigkeit Travel Speeds Vitesses de translation	Rückwärts Reverse AR	6 km/h	Vorwärts Forward AV	0 ... 70 km/h
Steigfähigkeit bei Transportgewicht Gradeability in Travel Order Rampe limite en état «transport sur route»				max. 60%

### Unterflasche/Hakengehänge Hook Block/Crane Hook Crochet mouflé/Crochet simple



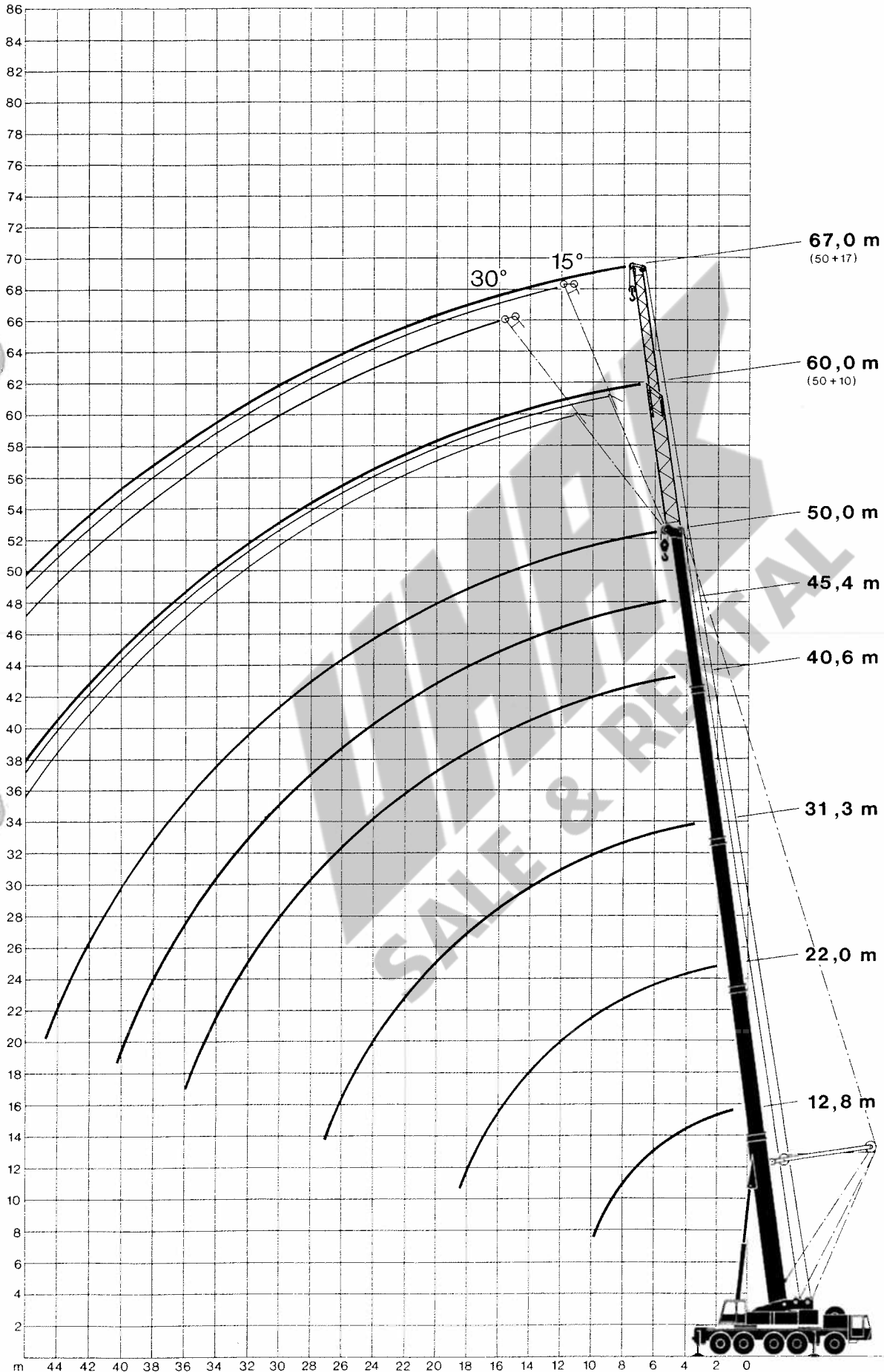
Tragfähigkeit · Capacity · Capacité			Anzahl der Rollen Number of Sheaves Nombre de poulies	Strangzahl Number of Lines Nombre de brins	Gewicht Weight Poids	„B“
Typ	85%	75%				
160 t	150 t	130 t	9	18	1400 kg	2,40 m
100 t	91 t	81 t	5	11	1216 kg	2,40 m
68 t	58 t	51 t	3	7	1055 kg	2,40 m
40 t	25 t	22 t	1	3	760 kg	2,40 m
8 t	8 t	7,33 t	Hakengehänge Crane Hook Crochet simple	1	370 kg	1,80 m

# Dimension Chart Encombrement



\* Gegengewicht über 27 t: Breite 4,4 m, Radius 5,15 m  
 Width with more than 27 t counterweight: 4.4 m, tail swing: 5.15 m  
 Largeur hors tout avec plus de 27 t de lest: 4,4 m, rayon d'encombrement AR: 5,15 m

**Arbeitsbereiche mit Hauptausleger und Hauptauslegerverlängerung**  
**Main Boom and Extension Boom Working Ranges**  
**Portées de flèche et rallonge de flèche**



## Carrier

Demag Truck-Type Carrier  
Frame  
Outriggers  
Engine

Transmission

Axles

Suspension

Wheels and Tyres  
Steering  
Brakes

Electrical Equipment  
Cab

## Superstructure

Upper Frame  
Paneling  
Slew Ring  
Engine

Hydraulic System

Hoist

Slewing Mechanism

Boom Luffing  
Control

Cab

Main Boom

Safety Devices

10x6x8 Drive/Steering

Monobox main frame with outrigger boxes integral, of high-grade close-grained steel. Four hydraulically telescoping outrigger beams with hydraulic jack legs.

Daimler-Benz OM 442 LA water-cooled 8-cylinder diesel engine with exhaust-type turbo-supercharger and supercharger intercooler. Output to DIN 70020: 320 kW (435 HP) at 2100 rpm. Max. torque: 1765 Nm at 1100 rpm. Fuel-tank capacity: 450 l.

ZF-Transmatik synchromesh torque-converter main transmission plus transfer case and differential with lock-out control; electro-pneumatic gearshift; 8 speed forward in high — 8 speeds forward in low — 1 speed reverse in high — 1 speed reverse in low.

1st: steering, non-driving. 2nd: steering and driving. 3rd: non-driving, non steering; 4th: steering and driving; 5th: steering and driving. All driving axles with planetary hubs. 2nd, 4th and 5th axles with differential lock-out control.

Hydro-pneumatic suspension of all axles, 3 suspension systems independent of one another; all axles hydraulically blockable.

10 x 16.00 R 25 road-lug tyres on 11.25-25 rims. All axles with single tyres.

Dual-circuit semibloc mechanical steering with hydraulic booster.

Service brake: air-operated dual circuit brake system, acting on all wheels. Parking brake: spring-loaded cylinders. Continuous braking: hydraulic retarder, integral with transmission. Braking system to EC standards.

24-volt d.c. system. Lights to EC standards.

Rubber-mounted steel-plate 2-man cab with safety-glass windows and all controls.

Torsion-resistant weldment of high-grade close-grained steel.

Sectional side panels, removable for service accessibility.

Triple-row roller-bearing slew circle with external ring gear.

Daimler-Benz OM 366 A water-cooled 6-cylinder in-line diesel engine. Output to DIN 70020: 119 kW (163 HP) at 2300 rpm. Max. torque 560 Nm at 1400 rpm. Fuel tank capacity: 280 l.

Two variable-displacement axial-piston hydraulic pumps with automatic power control and one constant-displacement hydraulic pump for three hydraulic circuits and three simultaneous work motions; one constant-displacement hydraulic pump for the low-pressure servo control.

Constant-displacement axial-piston hydraulic motor; hoist drum with integral planetary gearing and spring-loaded holding brake; anti-twist hoist cable.

Axial-piston hydraulic motor with planetary gearing; foot-pedal operated slewing brake and spring-loaded holding brake.

One differential cylinder with pilot-controlled lowering brake valve.

Four self-centering levers control the crane operations through hydraulic power and pilot valves.

Spacious all-steel luxury cab with large folding-out windscreen, roof window, sliding door, self-contained hot-air heating unit and ventilation system, all control and monitoring instruments for crane operation.

5-section hydraulically telescoping boom, fabricated from high-grade close-grained plate stock, featuring the familiar DEMAG "ovaloid" design of rectangular box members with rounded-off corners. Each centre section slides on diagonally arranged self-centering plastic shoes. Boom head with mounting lugs for extension boom and luffing fly jib.

Electronic overload cut-out (load-moment limiting device) with digital read-out for hook load, rated load, boom length, boom angle, load radius; analogous display to indicate the capacity utilization; limit switches on hoist and lowering motions; pressure-relief and safety holding valves.

## Optional Equipment

10x8x8 Drive/Steering

1st, 2nd, 4th, and 5th axles: driving and steering, with planetary hubs; 3rd axle: non-driving, non-steering.

Crab-Steering Feature

Steering of 4th and 5th axles independent of 1st and 2nd axles. The non-steering 3rd axle can be raised hydraulically.

Tow Coupling

Tyres

12-t capacity; plus air-brake coupling and socket.

Secondary Hoist

16.00 R 25 off-the-road tyres on 11.25-25 rims.

Constant-displacement axial-piston hydraulic motor; hoist drum with integral planetary gearing and spring-loaded holding brake (avoids re-reeving of hoist line when using the optional extension boom or fly jib); anti-twist hoist cable.

Boom Pin-Lock System

Hydraulically operated pin-lock system for the telescoping boom sections.

Heavy-Lift Accessories

Permitting to lift loads of up to 130/150 t (75%/85%).

Additional Counterweight

13-10-t additional counterweight.

Superlift Attachment

The Superlift attachment is a simple means to increase the lifting capacity of the normal crane. It essentially consists of a boom suspension mast with guy ropes, which provides for an automatic rope-length adjustment for boom telescoping, a boom pin-lock system, and a 13-ton Superlift counterweight. The suspension mast is lowered to the main boom when not needed, or for road transport. The Superlift counterweight is deposited hydraulically, without the use of an auxiliary crane.

Extension Boom

Telescoping 10-17 m side-folding 2-part lattice-type extension boom; with adapter to permit an angular adjustment to 15° and 30°.

Non-Luffing Fly Jib

Fixed, non-folding lattice-type fly jib in lengths of 12 m, 18 m, 24 m, and 30 m (using components of the luffing fly jib). Angular adjustment to 3° and 20°.

Luffing Fly Jib

Lattice-type, in lengths from 18-36 m, with luffing mast, ropes, electrical equipment, and safety devices; (the 2nd hoist drum will be required when using the luffing fly jib).

# Tragfähigkeiten Hauptausleger und Hauptauslegerverlängerungen Main Boom and Extension Boom Lifting Capacities Forces de levage sur flèche et rallonge de flèche

DEMAS AC 335

27 t

Gegengewicht  
counterweight  
de lest

85%

Ausladung Radius Portée	Hauptausleger · Main Boom · Flèche								50m Hauptausleger · Main Boom · Flèche			Ausladung Radius Portée
	12,8 m		22,0 m		31,3 m	40,6 m	45,4 m	50,0 m	Hauptauslegerverlängerung (0°) Extension Boom · Rallonge de flèche			
	360°	nach hinten over rear en arrière	360°	nach hinten over rear en arrière	360°	360°	360°	360°	60m (10m) 360°	Tele	67m (17m) 360°	
m	t	t	t	t	t	t	t	t	t	t	m	
3	150,0**	-	-	-	-	-	-	-	-	-	-	3
3,5	136,0**	-	90,0*	-	-	-	-	-	-	-	-	3,5
4	125,0	-	90,0*	-	60,0	-	-	-	-	-	-	4
4,5	110,0	24,0	90,0*	24,0	60,0	-	-	-	-	-	-	4,5
5	99,7	22,2	90,0*	21,7	58,6	-	-	-	-	-	-	5
6	81,1	18,4	80,7*	17,9	54,0	36,0	-	-	-	-	-	6
7	67,7	15,4	67,2*	14,9	49,6	33,0	28,0	-	-	-	-	7
8	57,8	13,1	57,3*	12,5	45,3	30,7	26,7	22,0	-	-	-	8
9	50,3	11,1	49,7	10,5	41,9	28,5	24,9	21,3	-	-	-	9
10	-	-	43,7	8,9	38,6	26,5	23,2	20,0	-	-	-	10
12	-	-	33,7	6,4	33,4	23,1	20,2	18,0	11,3	-	-	12
14	-	-	26,4	4,5	27,3	20,3	18,0	16,1	10,8	-	-	14
16	-	-	21,2	3,0	22,1	18,1	16,0	14,3	10,1	8,0	-	16
18	-	-	17,4	1,9	18,2	16,3	14,5	12,7	9,4	7,8	-	18
20	-	-	-	-	15,3	15,0	13,1	11,1	8,6	7,3	-	20
22	-	-	-	-	13,0	12,7	11,9	10,0	7,7	6,9	-	22
24	-	-	-	-	11,1	10,7	10,8	9,0	7,0	6,4	-	24
26	-	-	-	-	9,5	9,0	9,7	8,3	6,3	5,8	-	26
28	-	-	-	-	-	7,7	8,3	7,6	5,7	5,4	-	28
30	-	-	-	-	-	6,4	7,1	7,0	5,2	4,9	-	30
32	-	-	-	-	-	5,4	6,1	6,0	4,7	4,6	-	32
34	-	-	-	-	-	4,6	5,3	5,1	4,4	4,3	-	34
36	-	-	-	-	-	-	4,5	4,4	3,8	3,8	-	36
38	-	-	-	-	-	-	3,8	3,6	3,6	3,5	-	38
40	-	-	-	-	-	-	3,2	3,0	3,0	3,2	-	40
42	-	-	-	-	-	-	-	2,4	2,5	3,0	-	42
44	-	-	-	-	-	-	-	2,0	2,0	2,8	-	44
46	-	-	-	-	-	-	-	-	1,6	2,3	-	46
48	-	-	-	-	-	-	-	-	1,2	1,9	-	48
50	-	-	-	-	-	-	-	-	-	1,5	-	50

27 t

Gegengewicht  
counterweight  
de lest

75%

Ausladung Radius Portée	Hauptausleger · Main Boom · Flèche								50m Hauptausleger · Main Boom · Flèche			Ausladung Radius Portée
	12,8 m		12,8 m		31,3 m	40,6 m	45,4 m	50,0 m	Hauptauslegerverlängerung (0°) Extension Boom · Rallonge de flèche			
	360°	nach hinten over rear en arrière	360°	nach hinten over rear en arrière	360°	360°	360°	360°	60m (10m) 360°	Tele	67m (17m) 360°	
m	t	t	t	t	t	t	t	t	t	t	m	
3	130,0**	-	-	-	-	-	-	-	-	-	-	3
3,5	120,0**	-	80,0*	-	-	-	-	-	-	-	-	3,5
4	109,0	-	80,0*	-	55,0	-	-	-	-	-	-	4
4,5	97,6	24,0	80,0*	24,0	53,3	-	-	-	-	-	-	4,5
5	88,0	22,2	80,0*	21,7	51,7	-	-	-	-	-	-	5
6	71,6	18,4	71,2*	17,9	47,7	32,0	-	-	-	-	-	6
7	59,8	15,4	59,3*	14,9	43,8	29,3	25,3	-	-	-	-	7
8	51,0	13,1	50,6	12,5	40,0	27,1	23,6	20,0	-	-	-	8
9	44,4	11,1	43,9	10,5	37,0	25,2	22,0	18,8	-	-	-	9
10	-	-	38,6	8,9	34,1	23,4	20,5	17,7	-	-	-	10
12	-	-	29,8	6,4	29,5	20,4	17,9	15,9	10,0	-	-	12
14	-	-	23,3	4,5	24,1	17,9	15,9	14,2	9,6	7,5	-	14
16	-	-	18,7	3,0	19,5	16,0	14,2	12,6	9,0	7,2	-	16
18	-	-	15,4	1,9	16,1	14,4	12,8	11,2	8,3	6,9	-	18
20	-	-	-	-	13,5	13,2	11,6	9,8	7,6	6,5	-	20
22	-	-	-	-	11,5	11,2	10,5	8,8	6,8	6,1	-	22
24	-	-	-	-	9,8	9,5	9,6	7,9	6,2	5,7	-	24
26	-	-	-	-	8,4	8,0	8,6	7,3	5,6	5,2	-	26
28	-	-	-	-	-	6,8	7,4	6,7	5,1	4,8	-	28
30	-	-	-	-	-	5,7	6,3	6,2	4,6	4,4	-	30
32	-	-	-	-	-	4,8	5,4	5,3	4,2	4,1	-	32
34	-	-	-	-	-	4,1	4,7	4,5	3,9	3,8	-	34
36	-	-	-	-	-	-	4,0	3,9	3,4	3,4	-	36
38	-	-	-	-	-	-	3,4	3,2	3,2	3,1	-	38
40	-	-	-	-	-	-	2,9	2,7	2,7	2,9	-	40
42	-	-	-	-	-	-	-	2,2	2,2	2,7	-	42
44	-	-	-	-	-	-	-	1,8	1,7	2,5	-	44
46	-	-	-	-	-	-	-	-	1,4	2,1	-	46
48	-	-	-	-	-	-	-	-	1,0	1,7	-	48
50	-	-	-	-	-	-	-	-	-	1,4	-	50

\* nur verbolzt (siehe Sonderausrüstung)

\*\* when pin-locked only (cf. Optional Equipment)

\* seulement lorsque verrouillé (voir Equipements optionnels)

\*\* mit Zusatzeinrichtung

\*\* with "heavy-lift" accessories

\*\* moyennant accessoires «manutentions extra lourdes»

# Lift Capabilities Main Boom and Extension Boom Lifting Capacities

## Forces de levage sur flèche et rallonge de flèche

11 t

Gegengewicht  
counterweight  
de lest

85%

Ausladung Radius Portée	Hauptausleger · Main Boom · Flèche								50m Hauptausleger · Main Boom · Flèche			Ausladung Radius Portée
	12,8 m		22,0 m		31,3 m	40,6 m	45,4 m	50,0 m	Hauptauslegerverlängerung (0°) Extension Boom · Rallonge de flèche			
	360°	nach hinten over rear en arrière	360°	nach hinten over rear en arrière	360°	360°	360°	360°	60m (10m) 360°	Tele	67m (17m) 360°	
3	140,0**	-	-	-	-	-	-	-	-	-	-	3
3,5	128,0**	-	90,0*	-	-	-	-	-	-	-	-	3,5
4	113,0	-	90,0*	-	60,0	-	-	-	-	-	-	4
4,5	99,8	19,0	90,0*	18,6	60,0	-	-	-	-	-	-	4,5
5	88,0	17,0	85,0*	16,6	58,6	-	-	-	-	-	-	5
6	70,9	13,8	65,0*	13,2	54,0	36,0	-	-	-	-	-	6
7	59,0	11,2	51,7	10,7	49,0	33,0	28,0	-	-	-	-	7
8	50,0	9,2	43,5	8,6	43,0	30,7	26,7	22,0	-	-	-	8
9	40,4	7,6	35,1	7,0	36,5	28,5	24,9	21,3	-	-	-	9
10	-	-	29,1	5,6	32,5	26,5	23,2	20,0	-	-	-	10
12	-	-	22,5	3,5	24,5	22,5	20,2	18,0	11,3	-	-	12
14	-	-	16,5	1,9	18,9	18,0	18,0	16,1	10,8	-	-	14
16	-	-	13,0	-	14,7	14,5	15,1	14,3	10,1	-	8,0	16
18	-	-	10,4	-	11,6	11,4	12,1	12,0	9,4	-	7,8	18
20	-	-	-	-	9,4	9,0	9,8	9,6	8,6	-	7,3	20
22	-	-	-	-	7,4	7,2	7,9	7,7	7,7	-	6,9	22
24	-	-	-	-	6,0	5,6	6,4	6,2	6,5	-	6,4	24
26	-	-	-	-	4,8	4,4	5,2	4,9	5,3	-	5,8	26
28	-	-	-	-	-	3,4	4,1	3,9	4,1	-	5,0	28
30	-	-	-	-	-	2,6	3,2	3,0	3,2	-	4,2	30
32	-	-	-	-	-	1,8	2,4	2,4	2,4	-	3,4	32
34	-	-	-	-	-	1,2	1,9	1,7	1,8	-	2,7	34
36	-	-	-	-	-	-	-	1,2	1,2	-	2,0	36
38	-	-	-	-	-	-	-	-	-	-	1,5	38
40	-	-	-	-	-	-	-	-	-	-	1,1	40

11 t

Gegengewicht  
counterweight  
de lest

75%

Ausladung Radius Portée	Hauptausleger · Main Boom · Flèche								50m Hauptausleger · Main Boom · Flèche			Ausladung Radius Portée
	12,8 m		22,0 m		31,3 m	40,6 m	45,4 m	50,0 m	Hauptauslegerverlängerung (0°) Extension Boom · Rallonge de flèche			
	360°	nach hinten over rear en arrière	360°	nach hinten over rear en arrière	360°	360°	360°	360°	60m (10m) 360°	Tele	67m (17m) 360°	
3	125,0**	-	-	-	-	-	-	-	-	-	-	3
3,5	113,0**	-	80,0*	-	-	-	-	-	-	-	-	3,5
4	100,0	-	80,0*	-	55,0	-	-	-	-	-	-	4
4,5	88,1	19,0	80,0*	18,6	53,3	-	-	-	-	-	-	4,5
5	77,7	17,0	77,3*	16,6	51,7	-	-	-	-	-	-	5
6	62,6	13,8	62,1*	13,2	47,7	32,0	-	-	-	-	-	6
7	52,1	11,2	50,7	10,7	43,8	29,3	25,3	-	-	-	-	7
8	44,1	9,2	42,5	8,6	40,0	27,1	23,6	20,0	-	-	-	8
9	35,7	7,6	34,1	7,0	36,0	25,2	22,0	18,8	-	-	-	9
10	-	-	28,1	5,6	30,2	23,4	20,5	17,7	-	-	-	10
12	-	-	21,1	3,5	22,1	20,4	17,9	15,9	10,0	-	-	12
14	-	-	15,8	1,9	16,7	16,4	15,9	14,2	9,6	-	7,5	14
16	-	-	12,2	-	13,0	12,8	13,4	12,6	9,0	-	7,2	16
18	-	-	9,6	-	10,3	10,1	10,7	10,6	8,3	-	6,9	18
20	-	-	-	-	8,3	8,0	8,7	8,5	7,6	-	6,5	20
22	-	-	-	-	6,6	6,4	7,0	6,8	6,8	-	6,1	22
24	-	-	-	-	5,3	5,0	5,7	5,5	5,8	-	5,7	24
26	-	-	-	-	4,3	3,9	4,6	4,4	4,7	-	5,2	26
28	-	-	-	-	-	3,0	3,7	3,5	3,7	-	4,5	28
30	-	-	-	-	-	2,3	2,9	2,7	2,9	-	3,7	30
32	-	-	-	-	-	1,6	2,2	2,1	2,2	-	3,0	32
34	-	-	-	-	-	-	1,1	1,7	1,5	-	2,4	34
36	-	-	-	-	-	-	-	1,0	1,1	-	1,8	36
38	-	-	-	-	-	-	-	-	-	-	1,4	38
40	-	-	-	-	-	-	-	-	-	-	1,0	40

\* nur verbolzt (siehe Sonderausrüstung)

\*\* when pin-locked only (cf. Optional Equipment)

\* seulement lorsque verrouillé (voir Equipments optionnels)

\*\* mit Zusatzeinrichtung

\*\* with "heavy-lift" accessoires

\*\* moyennant accessoires «manutenions extra lourdes»

Die Werte über der Trennlinie basieren auf Bauteilfestigkeit, die Werte unterhalb der Trennlinie auf Standsicherheit.

All capacities above the parting line are based upon structural strength. The capacities below the parting line are based on stability.

Les charges au-dessus de la ligne séparatrice se basent sur la résistance du matériau.

Les charges au-dessous de cette ligne se basent sur la stabilité.

# Tragfähigkeiten Hauptausleger

## Main Boom Lifting Capacities

### Forces de levage sur flèche

0 t

Gegengewicht  
counterweight  
de lest

75/85%

Hauptausleger · Main Boom · Flèche

Ausladung Radius Portée	12,8 m		22,0 m		31,3 m	40,6 m	45,4 m	50,0 m	Ausladung Radius Portée
	360°	nach hinten over rear en arrière	360°	nach hinten over rear en arrière					
m	t	t	t	t	t	t	t	t	m
3	125,0**	-	-	-	-	-	-	-	3
3,5	111,0	-	80,0*	-	-	-	-	-	3,5
4	95,0	-	80,0*	-	55,0	-	-	-	4
4,5	83,0	14,0	80,0*	13,6	53,3	-	-	-	4,5
5	73,0	12,4	72,0*	11,9	51,7	-	-	-	5
6	55,0	9,5	55,0	9,0	45,7	32,0	-	-	6
7	39,0	7,3	39,0	6,8	38,0	29,3	25,3	-	7
8	29,0	5,6	28,0	5,1	29,0	27,1	23,6	20,0	8
9	22,0	4,3	22,0	3,7	23,0	23,0	22,0	18,8	9
10	-	-	17,7	2,5	18,7	18,5	18,9	17,7	10
12	-	-	12,0	-	12,9	12,7	14,1	13,2	12
14	-	-	8,5	-	9,3	9,1	10,4	9,6	14
16	-	-	6,2	-	7,0	6,7	7,8	7,2	16
18	-	-	4,6	-	5,3	5,0	5,9	5,5	18
20	-	-	-	-	4,0	3,8	4,5	4,2	20
22	-	-	-	-	3,0	2,7	3,2	3,1	22
24	-	-	-	-	2,0	1,7	2,3	2,1	24
26	-	-	-	-	1,3	0,9	1,5	1,4	26

\* nur verbolzt (siehe Sonderausrüstung)  
\* when pin-locked only (cf. Optional Equipment)  
\* seulement lorsque verrouillé (voir Equipements optionnels)

\*\* mit Zusatzeinrichtung  
\*\* with "heavy-lift" accessoires  
\*\* moyennant accessoires «manutentions extra lourdes»

## Anmerkungen über Tragfähigkeiten

### Crane-Capacity Notes

### Conditions d'utilisation

Tragfähigkeiten überschreiten nicht 85%/75% der Kipplast.

Tragfähigkeiten 75% entsprechen DIN 15019.2 (Prüflast = 1,25 x Hublast + 0,1 x Auslegergewicht, auf die Auslegerspitze reduziert).

Das Gewicht der Unterflanschen, sowie die Aufnahmemittel, sind Bestandteile der Last und sind von den Tragfähigkeitsangaben abzuziehen.

Kranbetrieb zulässig bis:

Staudruck ..... 60 N/m<sup>2</sup>  
Windgeschwindigkeit ..... 9,8 m/s

Weitere Angaben über höhere Windlastgeschwindigkeiten in der Bedienungsanleitung des Kranes.

Gross capacities do not exceed 85%/75% of tipping load.

The 75% ratings are in conformance with DIN 15019.2 (test load = 1.25 x lifting load + 0.1 dead weight of boom reduced to boom point).

The weight of the hook block and all other load-handling devices is considered part of the load, and suitable allowance therefor should be made.

Crane can still operate safely up to a

Wind Pressure of ..... 60 N/m<sup>2</sup>  
and a Wind Speed of ..... 9.8 m/s

Consult operation manual for further particulars and higher wind speeds.

Les charges indiquées n'excèdent pas 85%/75% de l'effort de renversement.

Les charges de la colonne 75% sont conformes à DIN 15019.2 (charge d'essai = 1,25 x charge d'utilisation + 0,1 x poids propre de la flèche réduit à la tête de celle-ci).

Les poids du crochet mouflé et de tous les accessoires nécessaires pour accrocher la charge fait partie de celle-ci et est à déduire des charges d'utilisation.

La grue peut travailler en charge jusqu'à

des vents de ..... 60 N/m<sup>2</sup>  
et de ..... 9,8 m/s

Pour plus de détails et plus fortes pressions du vent consulter la Notice de Conduite de la grue.



Capacity

Counterweight  
0 Ton

Fixi Rad.  
360°

Boom Length

Radius

MIS CODE

Tabelwaarden 66 2/3% HEEREN KRAANVERHUUR ROOSENDAAL											NEN 2022	
MANNESMAN			DEMAG AC 335 SL					DATUM				
DEMAG 8			Serie No 37080					3-1993				
Capaciteit van de hoofdgiek						Kontragewicht 0 ton		360 graden				
Capaciteit (ton)						Stempelbreedte 7.5 meter (volledig uit)						
vlucht		#		#		Hoofdgiek in meters					vlucht	
(m)		12.8		22.0		31.3		40.6		50.0		
3	125.0**											3
3.5	111.0**											3.5
4	95.0**											4
4.5	83.0**	5.0	6.0	5.8	50.7	53.3						4.5
5				5.0	47.9	51.7						5
5.5				5.8	42.0	45.7	30.0	32.0				5.5
6					34.7	35.0	33.8	27.8	29.3	25.3		6
6.5	35.0			2.3	25.0	25.8	25.7	27.1	23.6	8.0		6.5
7	26.5			1.7	18.6	20.5	18.7	20.5	22.0	16.0		7
8				1.2	15.6	16.6	15.5	16.5	16.8	17.7		8
9					10.7	10.5	11.5	10.5	11.3	12.5	11.0	9
10					7.6	7.4	8.3	7.4	8.1	9.2	8.5	10
12	Present				5.3	6.2	5.3	5.9	6.9	6.4		12
14	Job				3.8	4.7	3.8	4.4	5.2	4.9		14
16					2.7	3.6	2.6	3.4	4.0	3.7		16
18					1.7	2.7	1.6	2.4	2.8			18
20					0.8	1.8	0.6	1.5	2.0			20
22							1.1	0.8	1.3			22
24												24
26												26
28												28

Hijskabel											Hijskabel	
inschering **18/11											inschering	
Telescopeer volgorde												
Tele No 1	0	0	33 %	33 %	66 %	50 %	100 %	83 %	83 %	100 %	100 %	Tele No 1
Tele No 2	0	0	33 %	33 %	66 %	50 %	100 %	83 %	83 %	100 %	100 %	Tele No 2
Tele No 3	0	0	33 %	33 %	66 %	50 %	100 %	83 %	83 %	100 %	100 %	Tele No 3
Tele No 4	0	0	0	0	0	50 %	0	50 %	100 %	100 %	100 %	Tele No 4
D S	007		007		007	007	007	007	007	007	007	D S

D S = O-ringsschakelaar aan PAT-console

\* Lasten boven de 55 ton alleen vergrendeld.

\*\* = Met hulpschijven.

Maximale last aan de runner is 7.3 ton.

Hot werken met de runner is alleen met lier 2 toegestaan

# op banden over de achterkant.

397 949 40 - 4 NL

Telescope First piece

Telescope Second piece

Telescope Third piece

Telescope Forth piece

Indien off Mr. Ketan Parmar

84 35 49 05: DEMAG AC 335 (37 049): Traglasten 85 %

(Pneu-Kran, Schweiz)

DS	BA	BA- Anz.	Betriebs- Zustand	LS
(DS 350 G)				
*** Hauptausleger, abgest., 1. Quadrant, 360 ° *** TLK-Nr. 370 516 40 (1-4)				
01	1	201	Gg 40 t, 360 Grad	1
03	1	203	Gg 27 t, 360 Grad	1
05	1	205	Gg 11 t, 360 Grad	1
07	1	207	Gg 0 t, 360 Grad	1
*09	1	209	Gg 19 t, 360 Grad	1
*** Hauptausleger, abgest., 1. Quadrant, 360 ° *** red. Stützbasis 4.9 m TLK-Nr. 398 296 40 (1-2)				
15	1	215	Gg 27 t, 360 Grad	1
17	1	217	Gg 11 t, 360 Grad	1
*** Hauptausleger, freistehend, 2 x 10 °, nach hinten *** TLK-Nr. 370 516 40 (1-4)				
11	4	911	Gg 27 t	2
12	4	912	Gg 11 t	2
13	4	913	Gg 0 t	2
*14	4	914	Gg 19 t	2

\* = Betriebsarten gesperrt!

DS	BA	BA- Anz.	Betriebs- Zustand	LS
*** Hauptausleger, abgest., Tele IV eingeschoben, 360 ° *** TLK-Nr. 370 516 40 (1-4)				
01	2	001	Gg 40 t, verbolzt,	4
01		101	Gg 40 t, unverbolzt	4
03	2	003	Gg 27 t, verbolzt	4
03		103	Gg 27 t, unverbolzt	4
05	2	005	Gg 11 t, verbolzt	4
05		105	Gg 11 t, unverbolzt	4
07	2	007	Gg 0 t, verbolzt	4
07		107	Gg 0 t, unverbolzt	4
*09	2	009	Gg 19 t, verbolzt	4
*09		109	Gg 19 t, unverbolzt	4
*** Hauptausleger, abgest., Tele IV eingeschoben, 360 ° *** red. Stützbasis 4.9 m TLK-Nr. 398 296 40 (1-2)				
15	2	015	Gg 27 t, verbolzt	4
15		115	Gg 27 t, unverbolzt	4
17	2	017	Gg 11 t, verbolzt	4
17		117	Gg 11 t, unverbolzt	4
01-09, 15,17	2	-1001	Rüsten, Tele IV unverbolzt	4
*** Superlift, Tele IV eingeschoben, verbolzt, 360 ° *** TLK-Nr. 397 884 40 E (1+2)				
80	5	1180	Gg 40 t, 1. Quadrant	1
82		1182	Gg 27 t, 1. Quadrant	1
80	6	1080	Gg 40 t	4
82		1082	Gg 27 t	4
80+82	6	-1080	Rüsten	4

\* = Betriebsarten gesperrt ! (TL 75%)

DS	BA	BA- Anz.	Betriebs- Zustand	LS
*** Hauptausleger, abgest., Tele IV ausgeschoben, 360 ° *** TLK-Nr. 370 516 40 (1-4)				
02	3	002	Gg 40 t, verbolzt,	6
02		102	Gg 40 t, unverbolzt	6
04	3	004	Gg 27 t, verbolzt	6
04		104	Gg 27 t, unverbolzt	6
06	3	006	Gg 11 t, verbolzt	6
06		106	Gg 11 t, unverbolzt	6
08	3	008	Gg 0.0 t, verbolzt	6
08		108	Gg 0.0 t, unverbolzt	6
*10	3	010	Gg 19 t, verbolzt	6
*10		110	Gg 19 t, unverbolzt	6

*** Hauptausleger, abgest., Tele IV ausgeschoben, 360 ° *** red. Stützbasis 4.9 m TLK-Nr. 398 296 40 (1-2)				
16	3	016	Gg 27 t, verbolzt	4
16		116	Gg 27 t, unverbolzt	4
18	3	018	Gg 11 t, verbolzt	4
18		118	Gg 11 t, unverbolzt	4
02-10, 16,18	3	-1002	Rüsten, Tele IV unverbolzt	6

*** Superlift, Tele IV ausgeschoben, verbolzt, 360 ° *** TLK-Nr. 397 884 40 E (1+2)				
81	7	1081	Gg 40 t	6
83		1083	Gg 27 t	6
81+83	7	-1081	Rüsten, Tele IV verbolzt	6

\* = Betriebsarten gesperrt ! (TL 75%)

DS	BA	BA- Anz.	Betriebs- Zustand	LS
----	----	-------------	-------------------	----

\*\*\* Tele-Verlängerungen, Tele IV ausgeschoben \*\*\*  
 TLK-Nr. 397 700 40 (1-2)  
 TLK-Nr. 398 808 40, 398 436 40 + 389 441 40  
 (Sonderlänge Gg 27 to, Offset 0 °)  
 TLK-Nr. 398 297 40 (1-2)

\*\*\* Tele-Verlängerungen 10 m, Offset 0 ° \*\*\*

20	8	420	Gg 40 t	3
21		421	Gg 27 t	3
22		422	Gg 11 t	3
23		423	Gg 27 t, red. Stützbasis 4.90 m	3
28		428	Gg 11 t, red. Stützbasis 4.90 m	3
20-23	-1420		Rüsten, Tele IV unverbolzt	3
28	-1428		Rüsten, Tele IV unverbolzt	3

\*\*\* Tele-Verlängerungen 10 m, Offset 15 ° \*\*\*

24	9	424	Gg 40 t	2
25		425	Gg 27 t	2
26		426	Gg 11 t	2
27		427	Gg 27 t, red. Stützbasis 4.90 m	2
29		429	Gg 11 t, red. Stützbasis 4.90 m	2
24-27	-1424		Rüsten, Tele IV unverbolzt	2
29	-1429		Rüsten, Tele IV unverbolzt	2

\*\*\* Tele-Verlängerungen 17 m, Offset 0 ° \*\*\*

40	10	440	Gg 40 t	4
41		441	Gg 27 t	4
42		442	Gg 11 t	4
43		443	Gg 27 t, red. Stützbasis 4.90 m	4
48		448	Gg 11 t, red. Stützbasis 4.90 m	4
40-43	-1440		Rüsten, Tele IV unverbolzt	4
48	-1448		Rüsten, Tele IV unverbolzt	4

\*\*\* Tele-Verlängerungen 17 m, Offset 15 ° \*\*\*

44	11	444	Gg 40 t	2
45		445	Gg 27 t	2
46		446	Gg 11 t	2
47		447	Gg 27 t, red. Stützbasis 4.90 m	2
49		449	Gg 11 t, red. Stützbasis 4.90 m	2
44-47	-1444		Rüsten, Tele IV unverbolzt	2
49	-1449		Rüsten, Tele IV unverbolzt	2

DS	BA	BA- Anz.	Betriebs- Zustand	LS
----	----	-------------	-------------------	----

\*\*\* Tele-Verlängerungen, Tele IV ausgeschoben \*\*\*

TLK-Nr. 397 700 40 (3)  
TLK-Nr. 397 342 40 (Sonderlänge)-gesperrt-

\*\*\* Tele-Verlängerungen 10 m, Offset 30 ° \*\*\*

*88	12	488	Gg 40 t	2
*89		489	Gg 27 t	2
*98		498	Gg 11 t	2
*99		499	Gg 17 t	2
*88+89	-1488		Rüsten, Tele IV unverholzt	2
*98+99				

\*\*\* Tele-Verlängerungen 17 m, Offset 30 ° \*\*\*

*63	13	463	Gg 40 t	2
*73		473	Gg 27 t	2
*78		478	Gg 11 t	2
*79		479	Gg 17 t	2
*63+73	3463		Rüsten, Tele IV unverholzt	2
*78+79	3478		-- " - " - " - " - " - "	2

\*\*\* Televerlängerungen, Tele IV ausgeschoben \*\*\*  
Superlift, Offset 0 Grad  
TLK-Nr. 397 885 40

84	14	1484	Tele-Verl. 10 m, GG 40 t	2
85		1485	" " 10 m, GG 27 t	2
84+85	-1484		Rüsten	2
86	15	1486	Tele-Verl. 17 m, GG 40 t	2
87		1487	" " 17 m, GG 27 t	2
86+87	-1486		Rüsten	2

\* = Betriebsarten gesperrt!

Bemerkungen:

DS = Dekaden- Schalter an Konsole  
BA = Betriebsart Nr.  
BA-Anz. = Betriebsart- Anzeige an Konsole  
LS = Anzahl Längenschritte (Hauptausleger)

Digitaleingänge :

DE 0: 1. Quadrant  
DE 1: Tele I verbolzt  
DE 2: Tele II verbolzt  
DE 3: Tele III verbolzt  
DE 4: Tele IV verbolzt  
DE 5: Drehbereich mobil (ein = nach hinten)

Relais-Ausgänge:

K1 : Längenschritt f. Druckabstufung  
K2 : unbenutzt  
K3 : BA "Mobil"  
K4 : BA "Superlift"  
K5 : BA "Wippspitzen"  
K6 : BA "Televerl. / starrer Hilfsausleger"  
K7 : BA "Hauptausleger abgestützt"  
K8 : LMB Überlast  
K9 : Hubenschalter

Schaltweise der BA-Relais: einzeln, ausser:

BA "Superlift" : K4 + K7  
BA "Televerl./HiA starr m. Sl." : K4 + K6

System-Programm: LDET V 1.3 A (06.03.1991)

Hinweise zur Programmierung:

Sämtliche Rüstprogramme sind am Programmierkoffer mit der Tausender-Stelle = 3 anzuwählen. Dies entspricht der BA-Anzeige an der Konsole = -1 der Tausender-Stelle !

## Shelax World Wide FZE

P.O. Box No 17528, Dubai, U.A.E.

Tel: +971 4 8838384 Fax: +971 4 8838284 Email: shelax@emirates.net.ae

### ALL TERRAIN CRANE

cap. in t.	130 t
manufacturer	DEMAG
model	AC 335 SL
year / 1st reg.	1989
available	acc. arrangement
<b>superstructure:</b>	
engine (kW / HP)	Mercedes
hours acc. meter	10.200 h
main boom app. m	50,0 m
swing away jib app. m	17,0 m
no. of hoists	2x
safe load indicator	PAT
hook blocks	3-sheave, 1-sheave
counterweight app. t	40 t
<b>chassis:</b>	
manufacturer	DEMAG
drive	10 x 8 x 8
engine (kW / HP)	Mercedes
km acc meter app.	79.000 km
max. travel speed	67 km/h
tyre size	16.00 R 25
specials	SUPERLIFT





**GOVERNMENT OF NAGALAND**  
**CERTIFICATE OF REGISTRATION**  
**INDIA**

**FORM 23**  
(See Rule 48) of C.M.V. Rules, 1989.

Registration Number: **NL-01/A8818**

Brief description of vehicle:  
**DEMAG AC 335SL ( MOBILE CRANE )**

Purchased from the Dealer's name & address:  
**SHELAX WORLDWIDE FZE.**

Name of the Registered Owner:  
**TRANSINDIA FREIGHT SERVICES PVT.LTD**

Son/Wife/Daughter of

Full address (permanent):  
**WAKEFIELD HOUSE, SPROTT ROAD, BALLAST ESTATE, MUMBAI-38.**

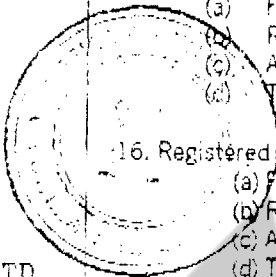
Full address (temporary):  
**CHANDMARI, KOHIMA, NAGALAND.**

15. Number, description of size of tyre

(a) Front axle **1800X25=10**  
(b) Rear axle  
(c) Any other axle  
(d) Tandem axle

16. Registered axle weight

(a) Front axle **Kgms**  
(b) Rear axle **Kgms**  
(c) Any other axle **Kgms**  
(d) Tandem axle **Kgms**



Additional particulars of alternative or additional semi-trailer registered with an articulated vehicle

17. Type of body  
18. Unladen weight  
19. Number, description and size of tyre on each axle  
20. Registered axle weight (in respect of each axle)

Date **11/02/2004** Signature of the Registering Authority

This certificate is valid from to

**DETAILED DESCRIPTION**

- 1. Class of vehicle **NON TRANSPORT**
- 2. Maker's name **DEMAG**
- 3. Type of body **MOBILE CRANE**
- 4. Month & year of make **2002**
- 5. Number of cylinders **8**
- 6. Chassis number **37049**
- 7. Engine number **442 901500499413**
- 8. Fuel used in engine **DIESEL**
- 9. Cubic capacity
- 10. Wheel base
- 11. Seating capacity **2**
- 12. Unladen weight **105200Kg's**
- 13. Colour(s) of body, wings, front end

14. Horse power = **315 BHP**

\*Additional particulars in the case of all transport vehicles other than motor cabs

- 14\* Gross vehicle weight
- (a) as certified by the manufacturers **Kgms**
- (b) as registered **Kgms**

Date **11/02/2004**

Regional Transport Officer  
Signature of the Registering Authority

Note: The motor vehicle above described is

**Hypothecation:**  
**ICICI BANK LTD.**  
**MAHALAXMI, MUMBAI-34**  
**W.E.F. 11/02/2004.**

Date

Regional Transport Officer  
Signature of the Registering Authority

This certificate is renewed  
From  
to

Date

Signature of the Registering Authority

TAX PAID FROM 01/02/2004 TO 31/03/2005 WIDE RECEIPT-NO. KOH0018 DT. 11/02/2004



213228

CERTIFICATE OF INSURANCE of Miscellaneous And Special Type of Vehicles  
Form 51 of the Central Motor Vehicles Rules 1989

12-303

Policy Number : 112500/31/05/1987B

Liability Only

Development Officer/Agent : 773 / 99999

Insured's Name: M/S. TRANSINDIA FREIGHT SER PVT LTD

Insurer code: 112500 Email :

Address : WAKEFIELD HOUSE, SPORT ROAD, MUMBAI Dist. :  
GREATER MUMBAI, Maharashtra 400038

Address : MANI MAHAL, 3 RD FLOOR, 11/21, MATHUR ROAD, OPERA  
HOUSE, MUMBAI-400004, SERVICE TAX NO. AACN4165CST176  
Telephone No: 23631988 Fax No: 3677036

Premium: Rs.668 STax:Rs.88 Tot Premium: Rs.948

RUPEES NINE HUNDRED FORTY EIGHT ONLY  
Vehicle IDV : Rs.0

Particulars Of vehicle Insured :

Registered Mark No	Make	Year	Chassis No	Engine No
NL-BI-A-8816	MOBILE CRANE	2002	137049	1442901500499413

Hire/Hypo/Lease : NONE

Name of the Registration Authority : R.T. Office, MUMBAI

Geographical Area : INDIA

Effective date of commencement of Insurance for the purpose of the Act  
From 08:00 O'Clock On 20/01/2006 To Midnight Of 19/01/2007

Subject to INT endorsement Printed herein/attached hereto 21, 47, 37, 40

Persons or classes of Persons entitled to drive :

Any person including Insured provided that a person driving holds an effective driving licence at the time of the accident and is not disqualified from holding or obtaining such a licence. Provided also that the person holding an effective Learner's Licence may also drive the vehicle and such a person satisfies the requirements of Rule 3 of Central Motor Vehicle Rule, 1989.

The Policy covers use only under a permit within the meaning of the Motor Vehicle Act, 1988 or such a carriage falling under Sub-section 3 of Section 66 of the Motor Vehicles Act 1988.

The Policy does not cover use for

- Organised Racing
- Face Making
- Reliability Trails
- Speed Testing

Limit of Liability :

Limit of the amount of the Company's Liability Under Section II-1(i) in respect of any one accident : as per Motor Vehicles Act, 1988

Limit of the amount of the Company's Liability Under Section II-1(ii) in respect of any one claim or series of claims arising out of one event : UPTO Rs. 750000

I/We hereby certify that the policy to which the certificate relates as well as the certificate of insurance are issued in accordance with provisions of Chapter X & XI of M. V. Act, 1988.

For and on behalf of  
The New India Assurance Company Limited

Duly Constituted Attorney(s)